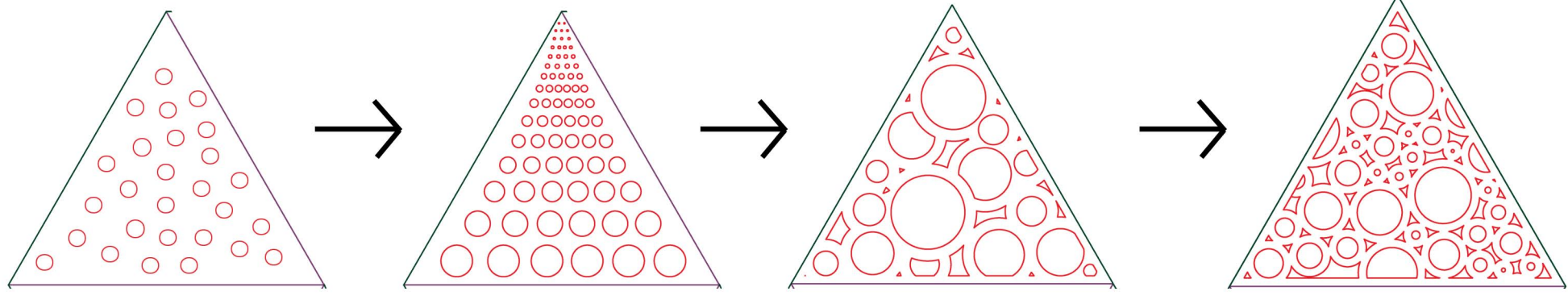
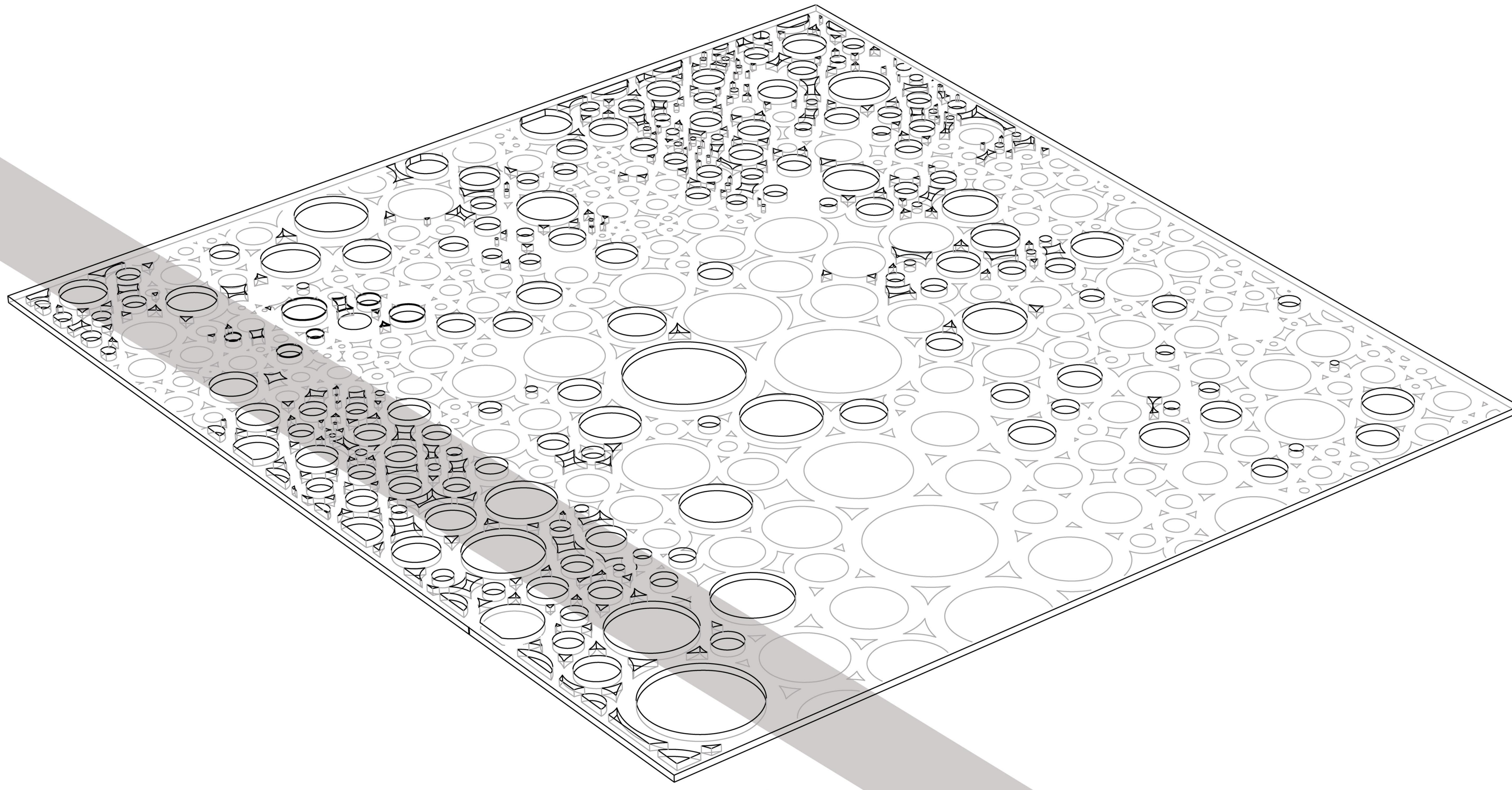
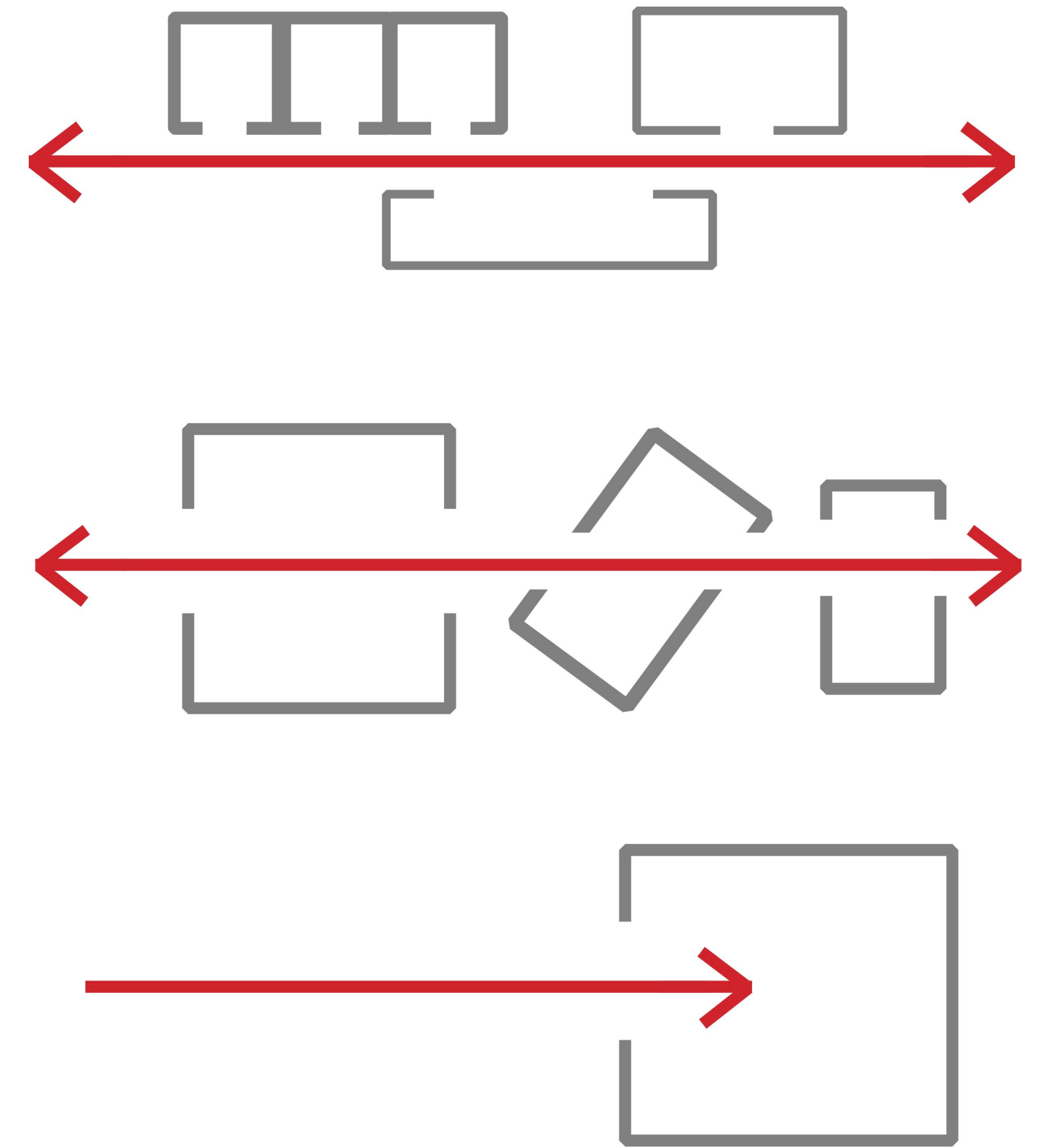


State Emergency Services Marrickville

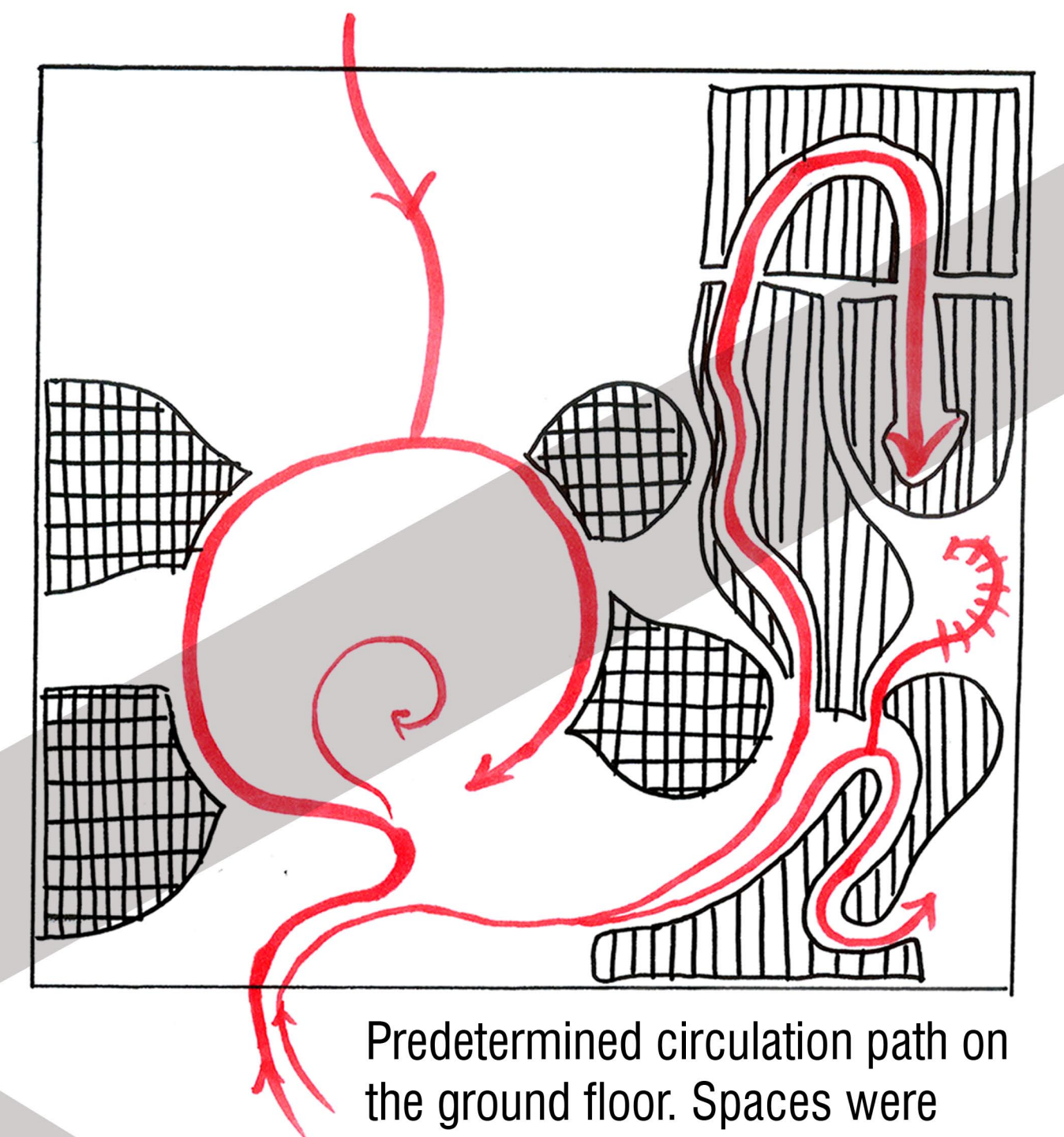
On the top layer is a laser-cut aluminium and plastic composite decorative screen. Each perforation has a meaning as it responds to the program within.
How the screen circular pattern developed;



ANTHILL; where spaces are designed based on paths of circulation. These are the different ways in which people move through space; past spaces, through spaces and into spaces.

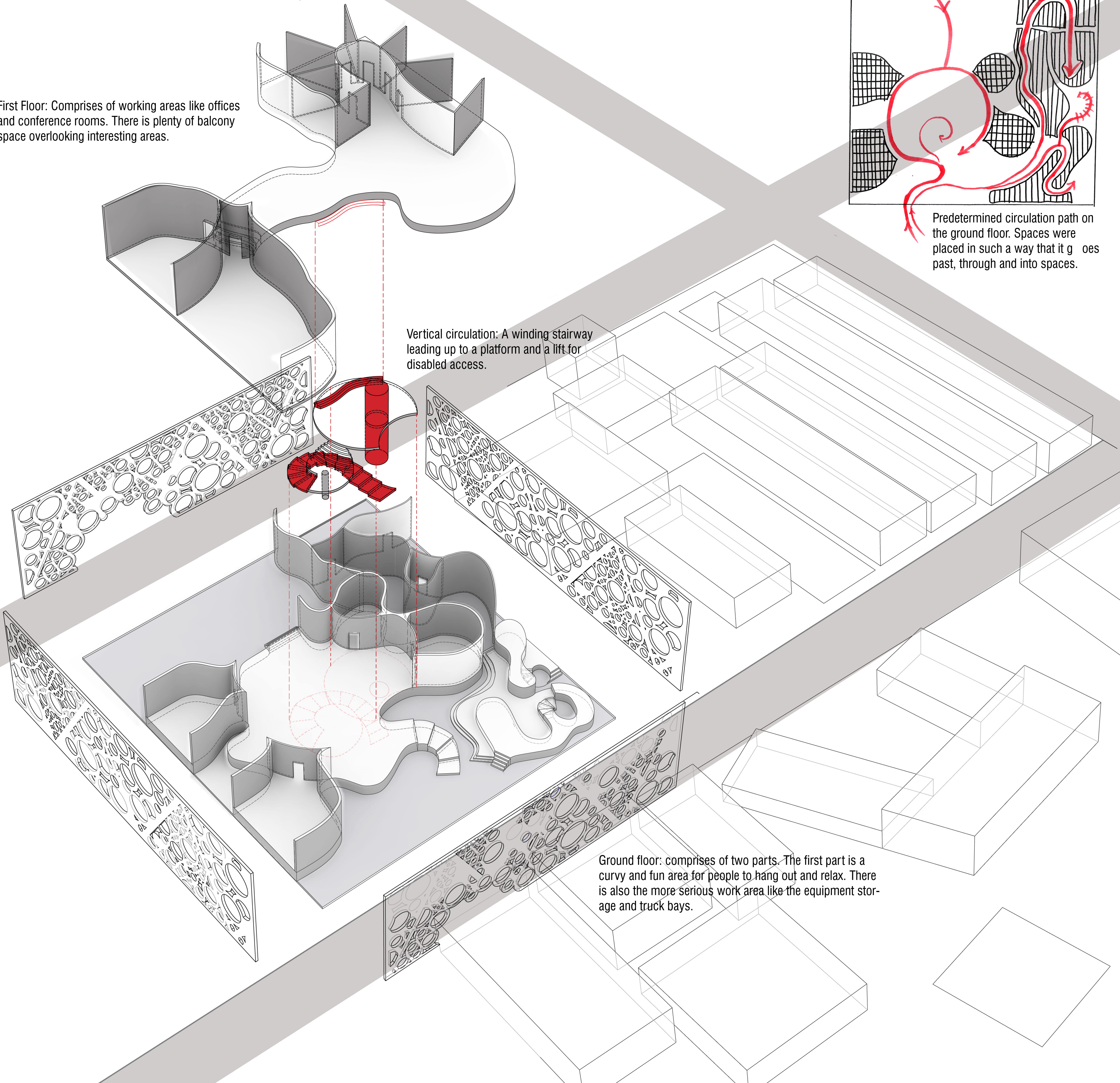


First Floor: Comprises of working areas like offices and conference rooms. There is plenty of balcony space overlooking interesting areas.



Predetermined circulation path on the ground floor. Spaces were placed in such a way that it goes past, through and into spaces.

Vertical circulation: A winding stairway leading up to a platform and a lift for disabled access.



Ground floor: comprises of two parts. The first part is a curvy and fun area for people to hang out and relax. There is also the more serious work area like the equipment storage and truck bays.