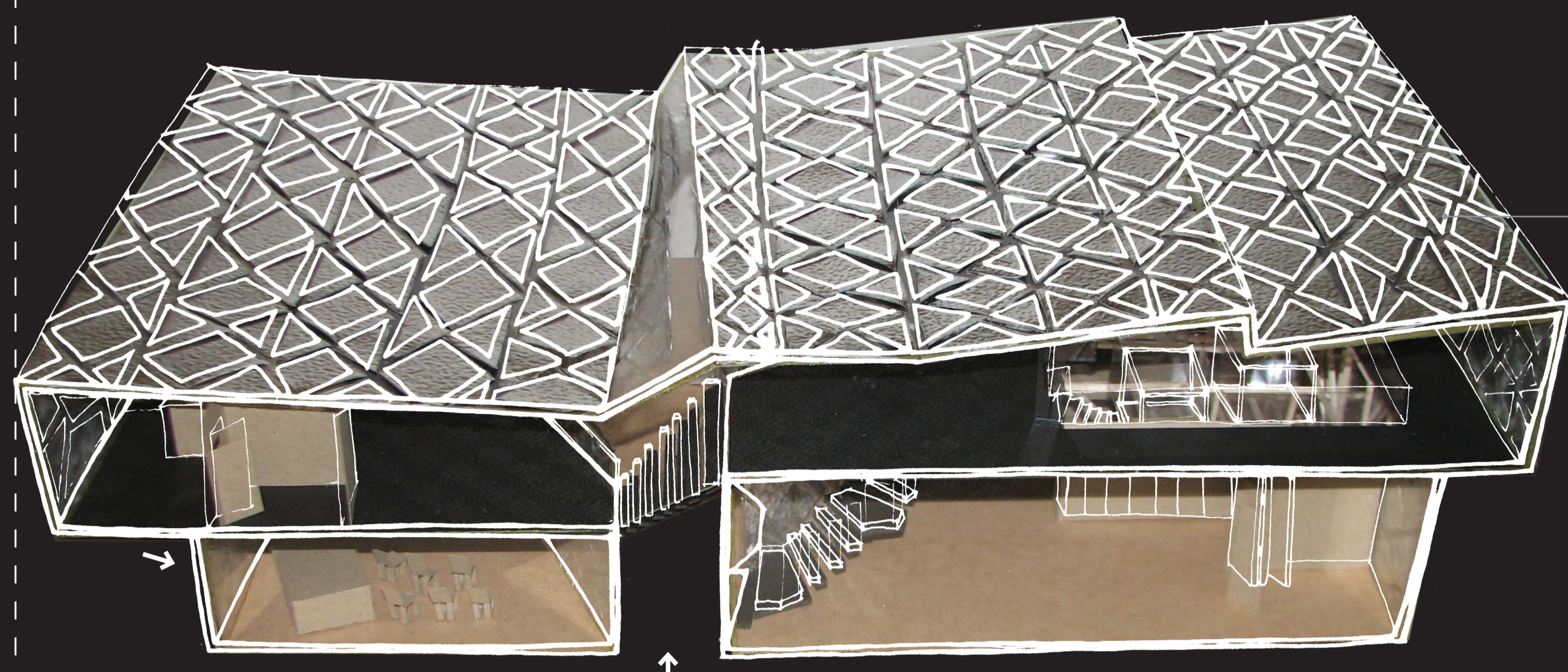


Facade

Textured Aluminum External Facade Panels

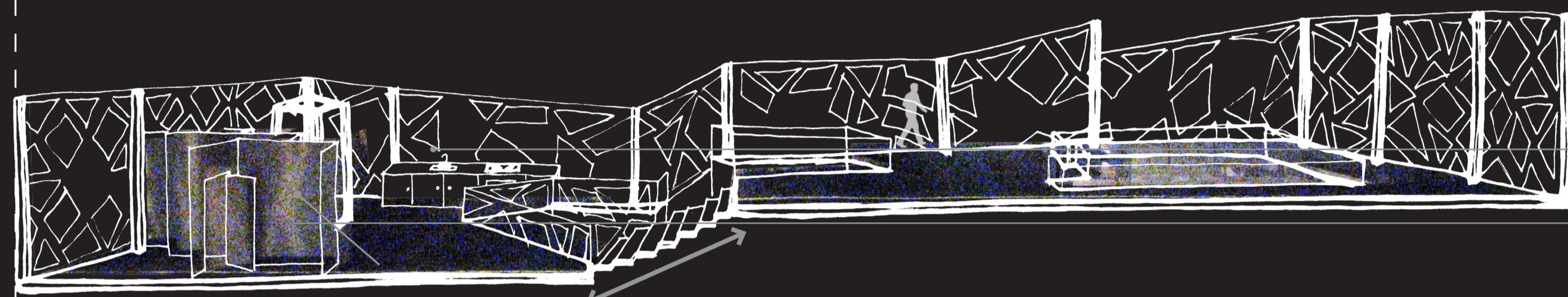
Openings in facade panels to maximise views out. Also expresses circulation from exterior



Roof

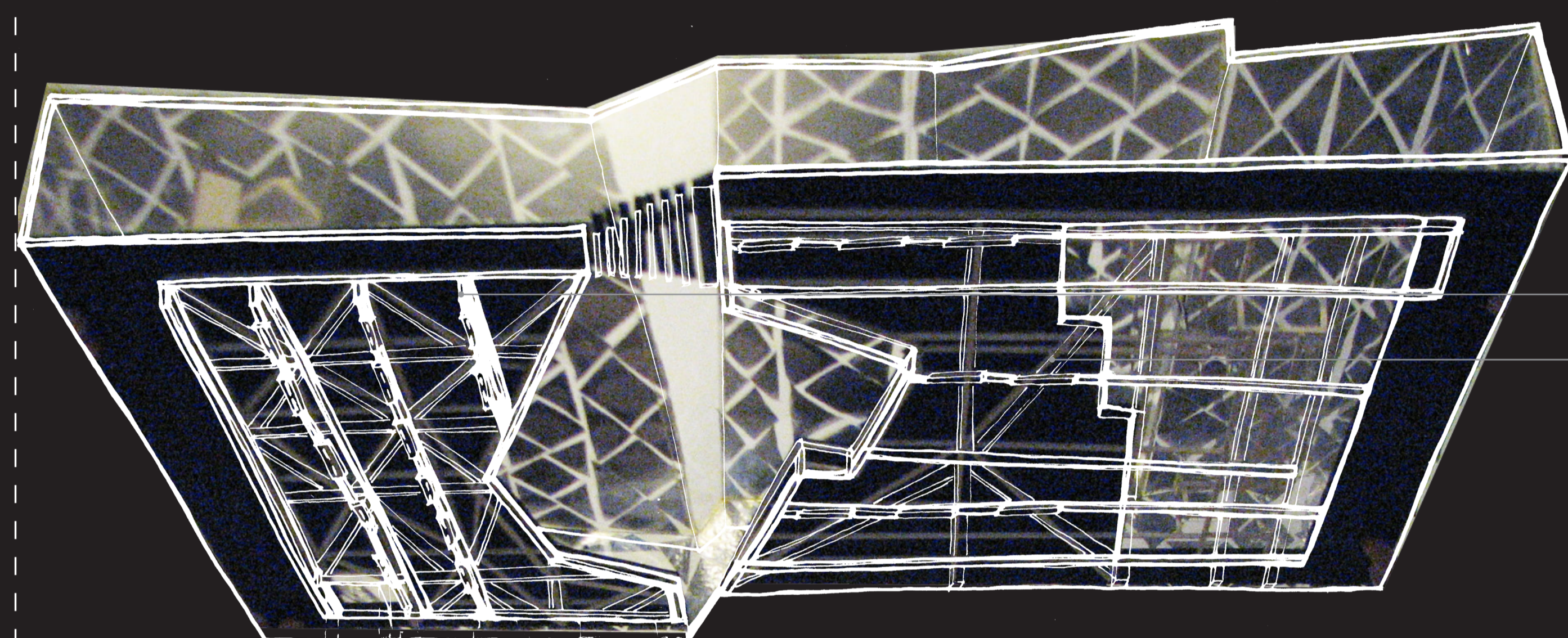
Raised Roof planes maximise ventilation and natural sunlight into upper levels & void space

Roof Facade Panels can be used for solar energy collection



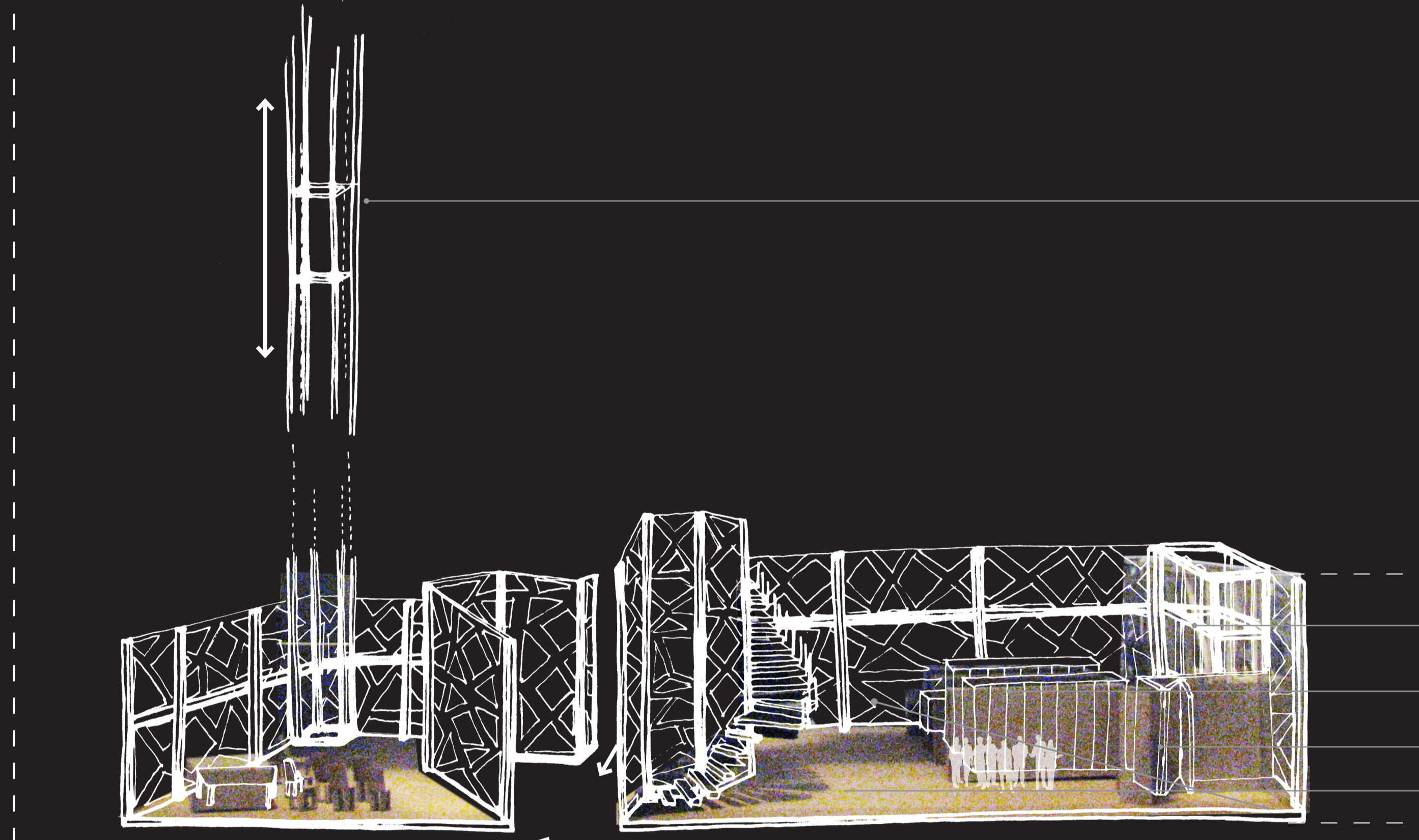
First Level

Kitchen, Dining & Break Out Space
Amenities



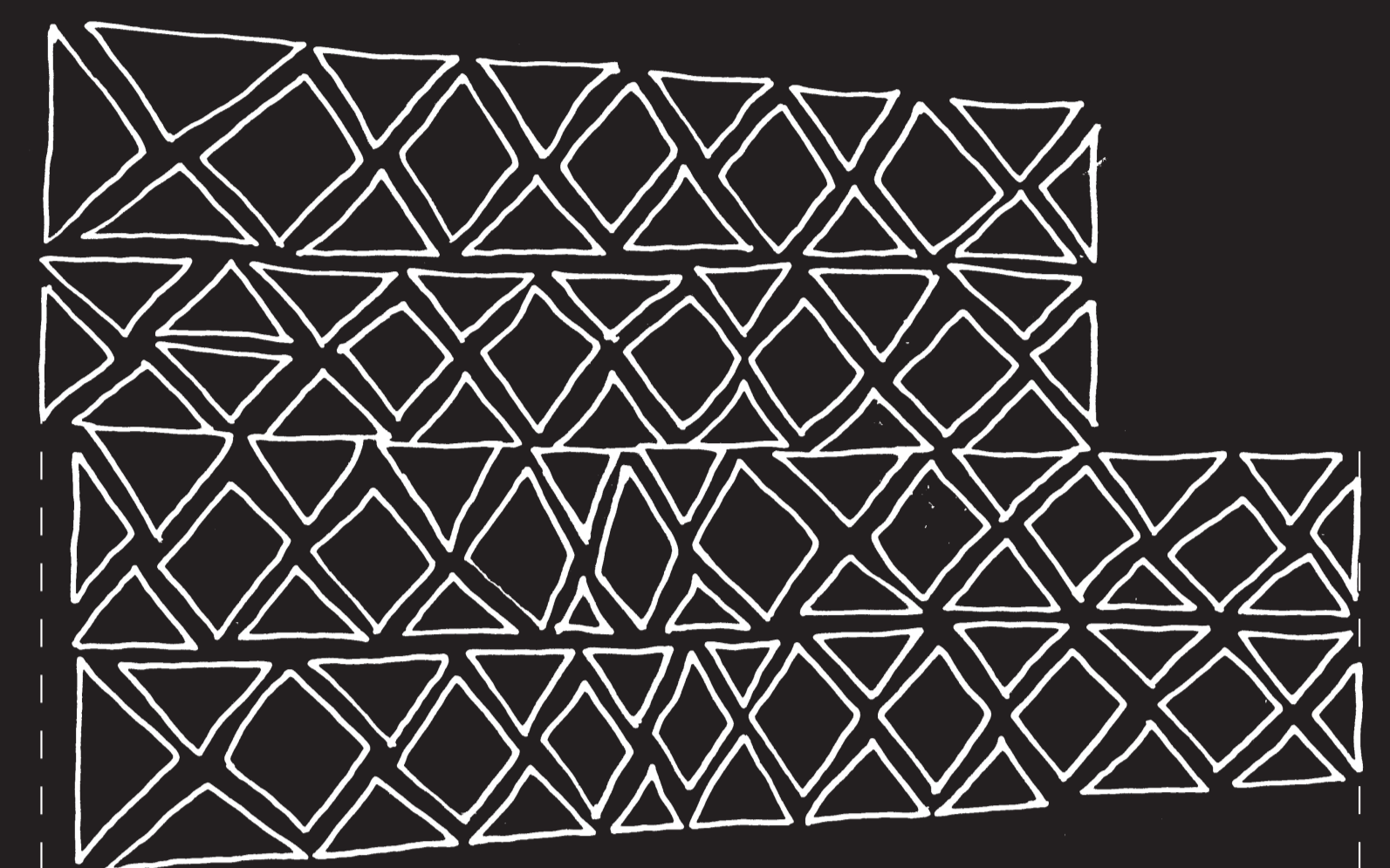
Ground Level Ceiling

Suspended Lighting
Ceiling Storage & Hanging System

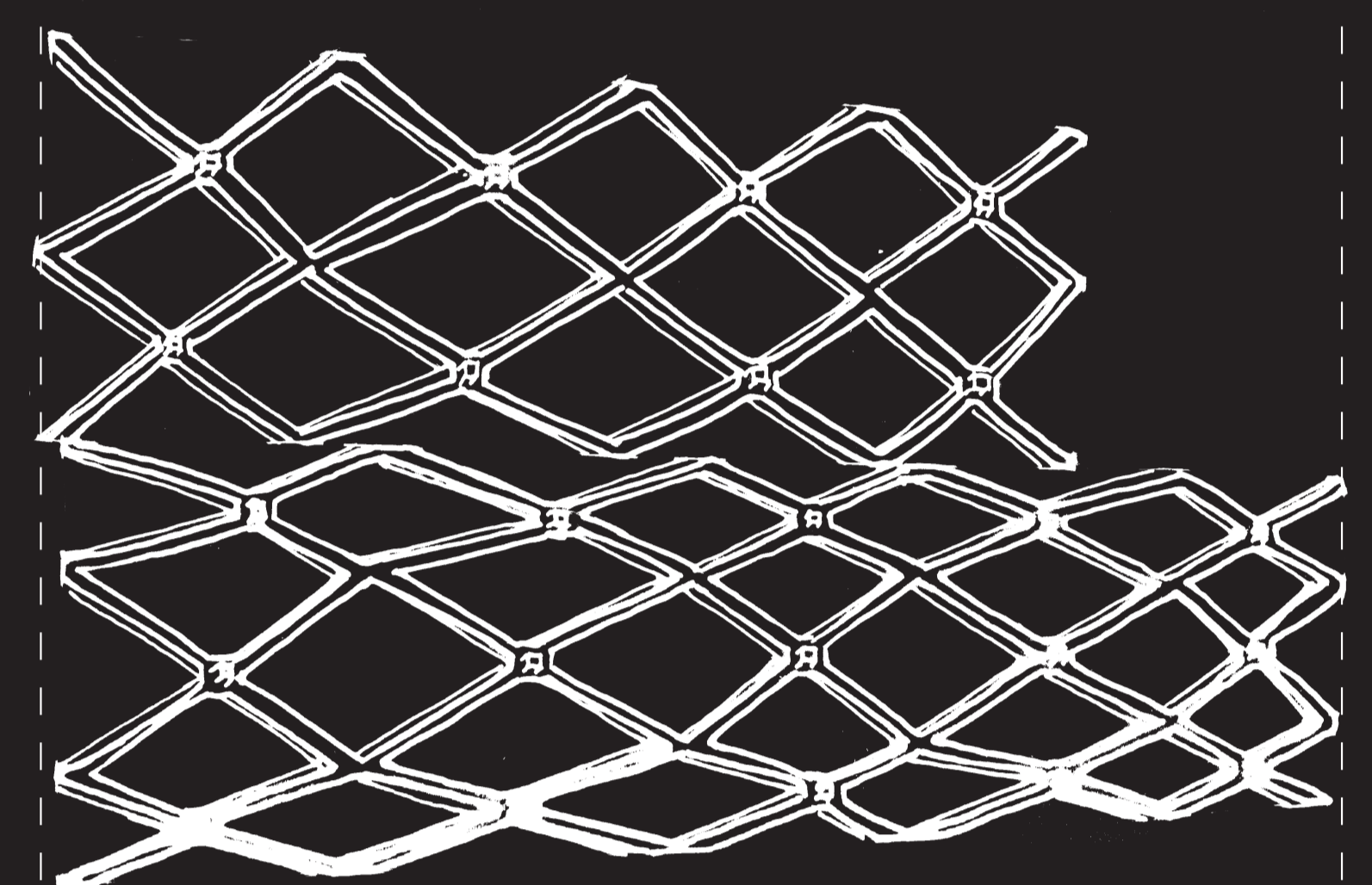


Ground Level

Lift Ground to First
Storage Wall System
Lockers
Laundry behind
Dry Store & First Aid
Garage Bay

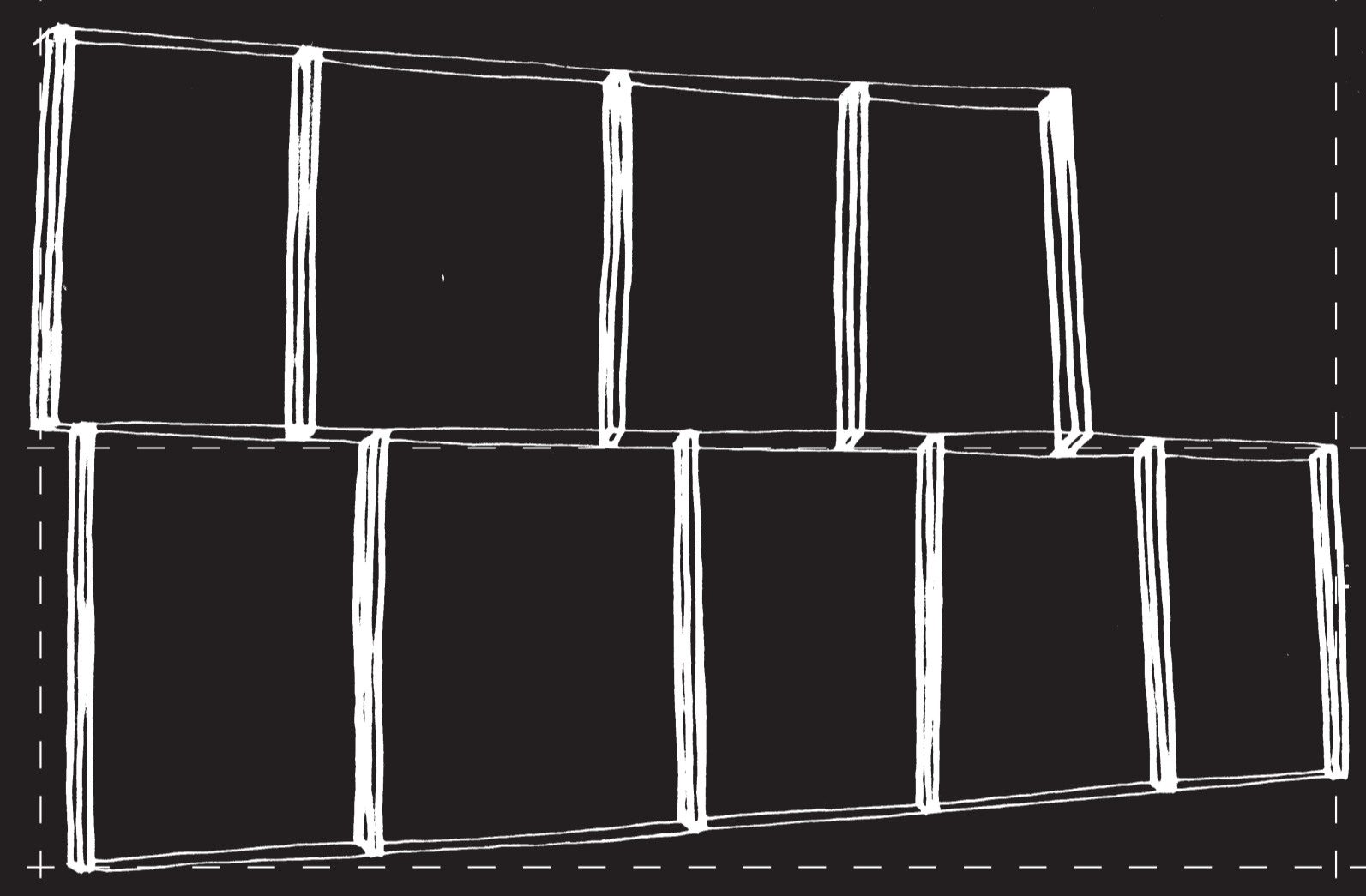


Cladding panels



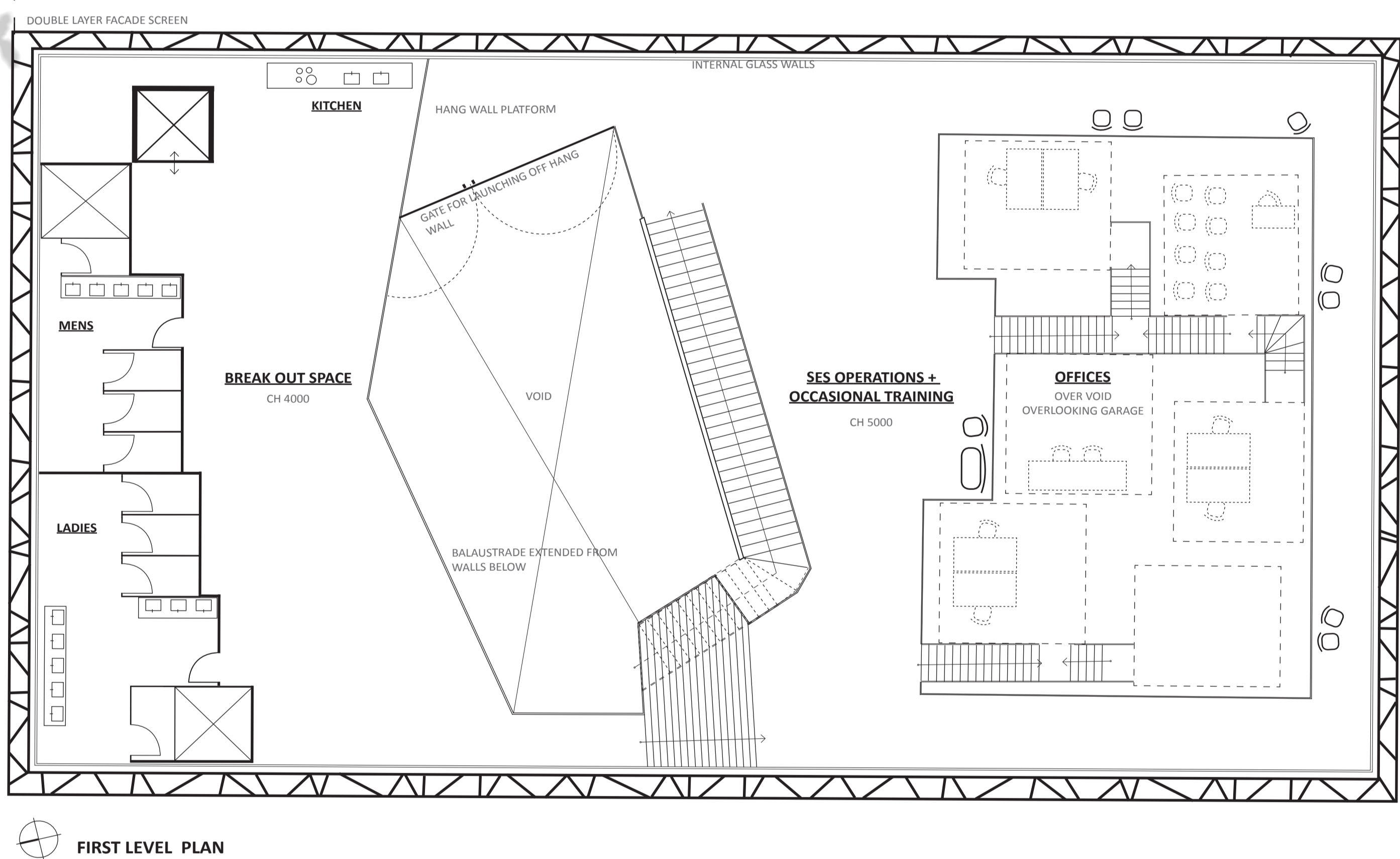
Steel Structure

Aligns with exterior wall mullions for aesthetically pleasing affect.

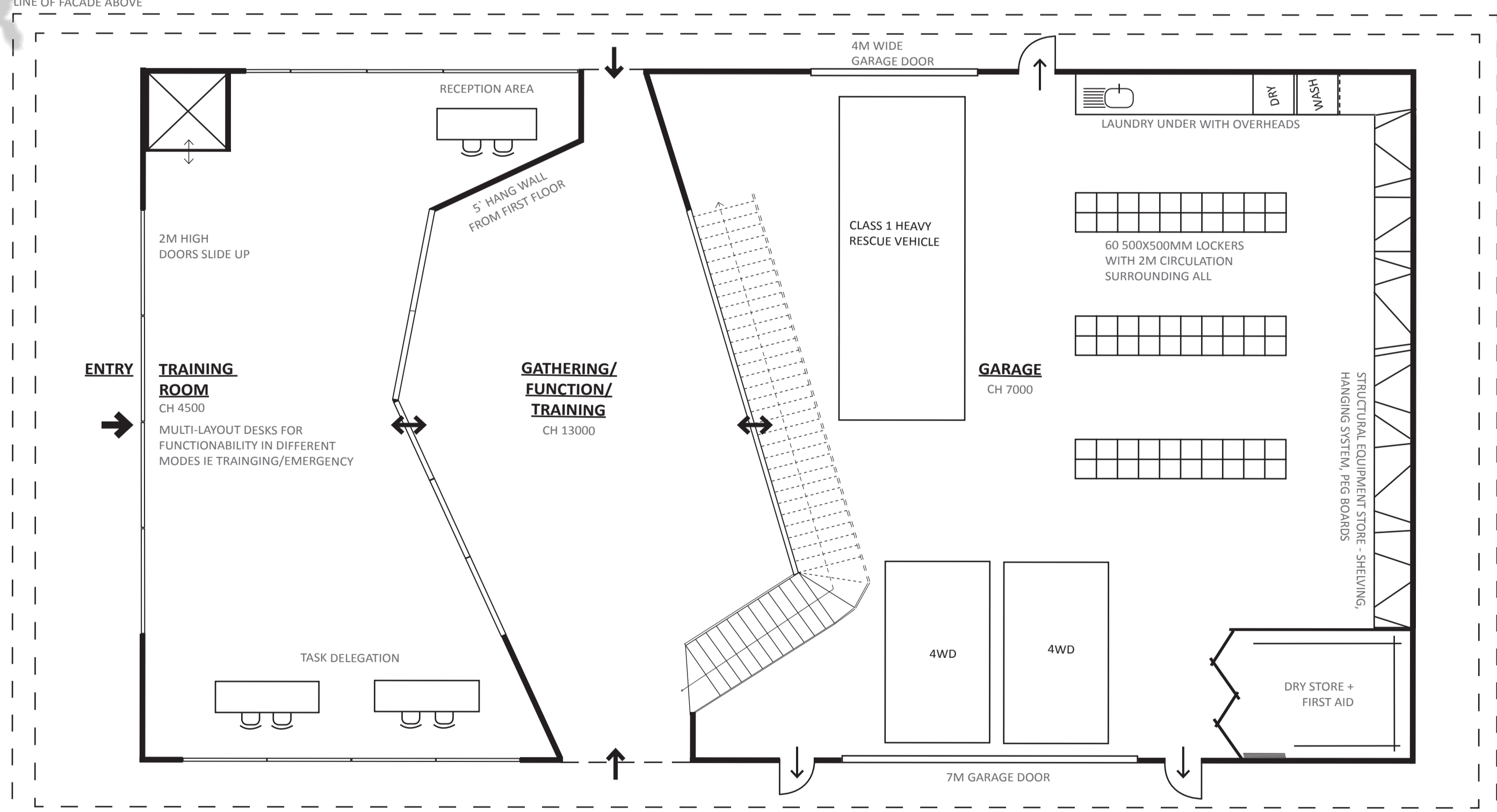


Glass walls and Mullions

Exploded Facade



FIRST LEVEL PLAN



GROUND PLAN

BATHROOMS

The Mens and Ladies amenities overlook a view of the suburb. Who says bathrooms can't have a good view? 3.1m x 2.1m and one shower as requested.

KITCHEN

Rather than an enclosed kitchen there is a linear bench that serves as kitchen serving and prep area. This open plan then allows visibility to the office space to come over and use the kitchen in multiple ways - come, make a coffee, have a chat and so on.

BREAK OUT SPACE

The break out space is an open plan area that is flexible and allows many layouts of chairs, tables and loungers. It is a casual area for both meeting, business and other working. This area is a place for relax and recharge.

SES OPERATIONS

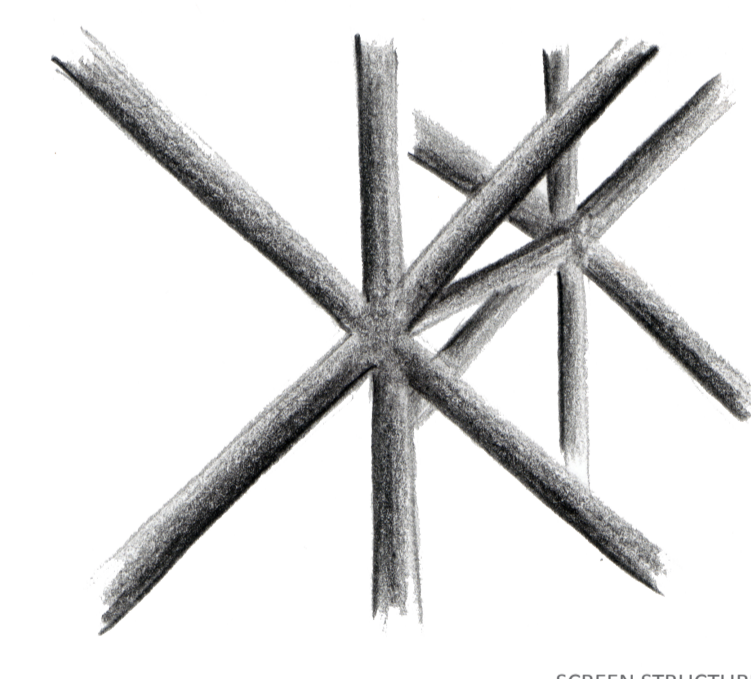
SES Operations is used as a call centre in emergency mode and an additional training space at other times. This open plan area allows for any and all programmatic activities.

It is in close proximity to the offices, which coordinate with the centre in emergency mode.

A walkway allowing extra shelving space, space to rest away from traffic and easy access for maintenance surrounds the offices at the level of the operations centre.

OFFICES

Offices are really but interestingly situated at various levels and positions over the garage below. There is visual connection between the offices, operations, training and garage spaces.



SCREEN STRUCTURE SKETCH

ENTRY RECEPTION - TASK DELEGATION

Entry from both side streets, allows easy access for all attending the station in emergency mode.

In emergency mode reception in the first pair of call for volunteers to be designated a task or group.

Reception desks can be reconfigured to many alternate layouts allowing the training room to access more space and use the desks when not in emergency mode.

From the entry/reception area you can directly access the open or lift to the first floor.

TRAINING ROOM

The training room is positioned so that it has access to both the main public area within the site, with allowable access through to the garage for various tasks.

The training room is also positioned in direct relation to the open void area in the centre of the ground building sections. This allows that space to be opened up and utilized as training space also.

SCREENING OFFICE

This space is the main public area within the site, with allowable access through to the garage and the training room has many possibilities in regards to public functions and events.

The space can be left open to the elements or closed off using sliding doors.

2.1M HIGH SLIDING SCREEN DOORS

On walls that have the screen pattern those applied to them on a large scale, these doors are half the height of the ceiling, therefore are able to slide against into the top half of the wall, leaving the space surrounding the doorway clear of the doors themselves.

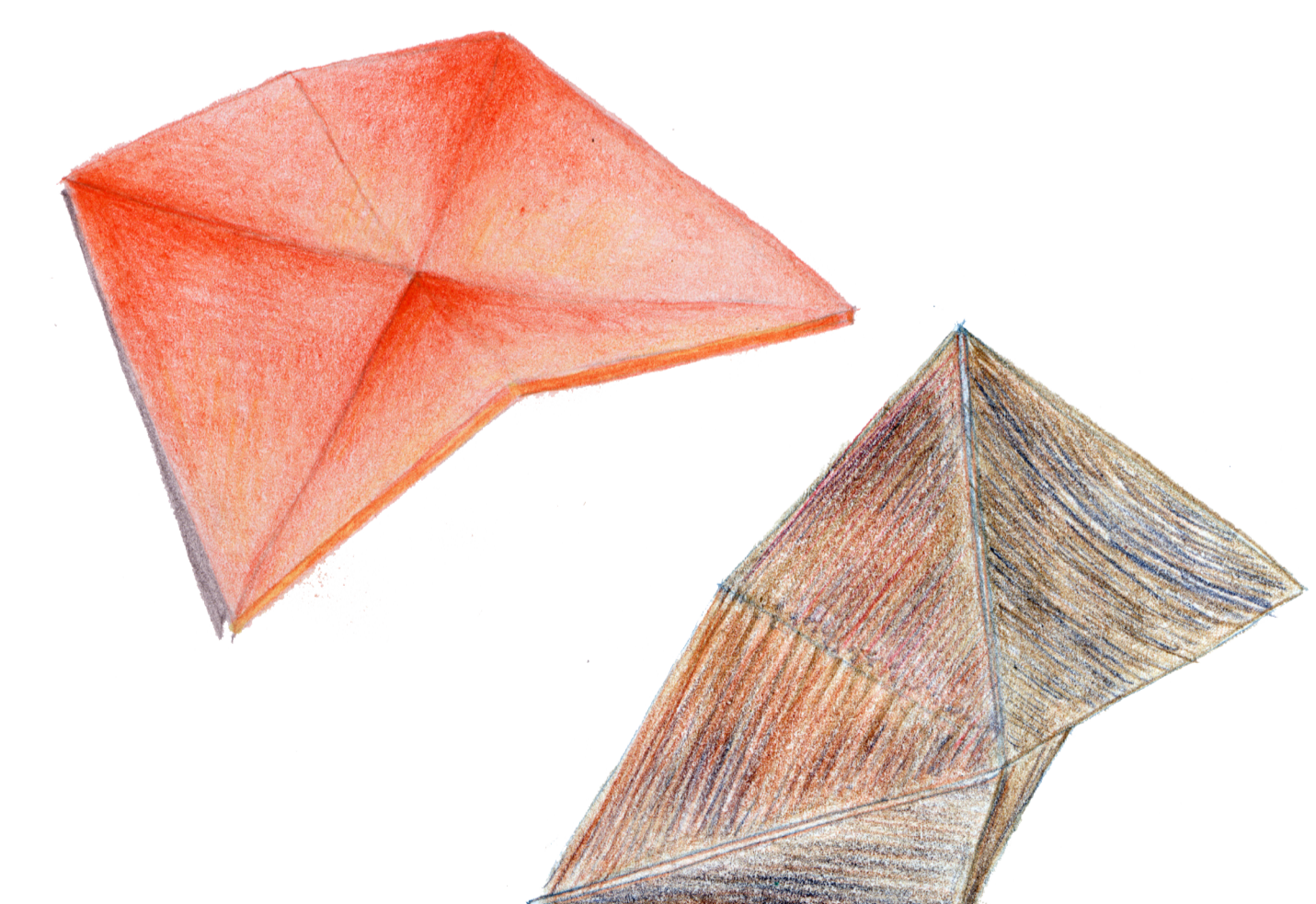
EQUIPMENT STORAGE CEILING

The equipment store isn't a room in itself rather a 3.1m long wall and the ceiling. The wall is made of a hanging and storage system over the garage below. There is visual connection between the offices, operations, training and garage spaces.

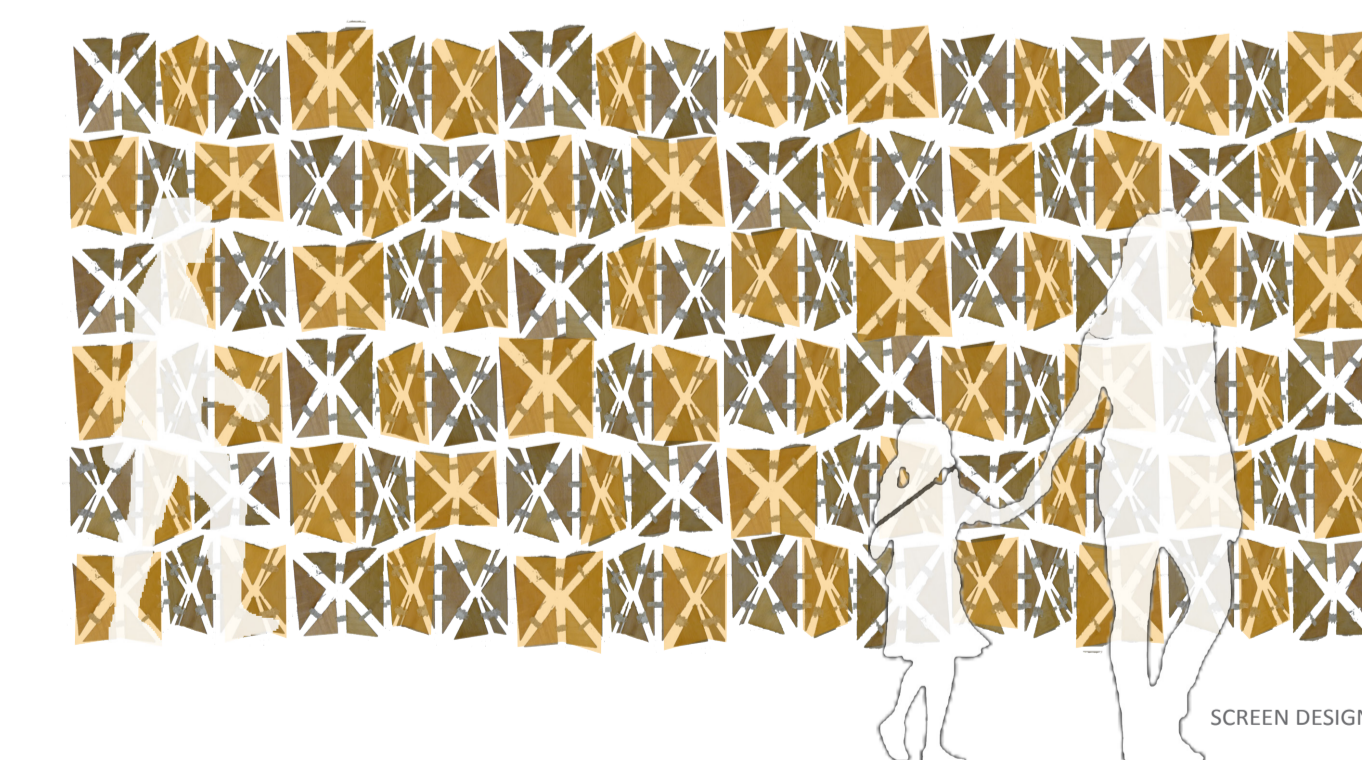
The LAUNDRY is incorporated into this linear based storage system and is under the appliances underneath, along with wall, with overheads for extra laundry storage.

LOCKERS

Each locker (60 total) is 500w x 1000 mm and 2m tall. Each locker has 2m circulation space surrounding.



SCREEN ELEMENTS



FACADE INSPIRATION

