

Figure 1. A view from the watchtower of the Church of st Giles (kostel sv jiji) looking over st Anna's and the Vltava river.

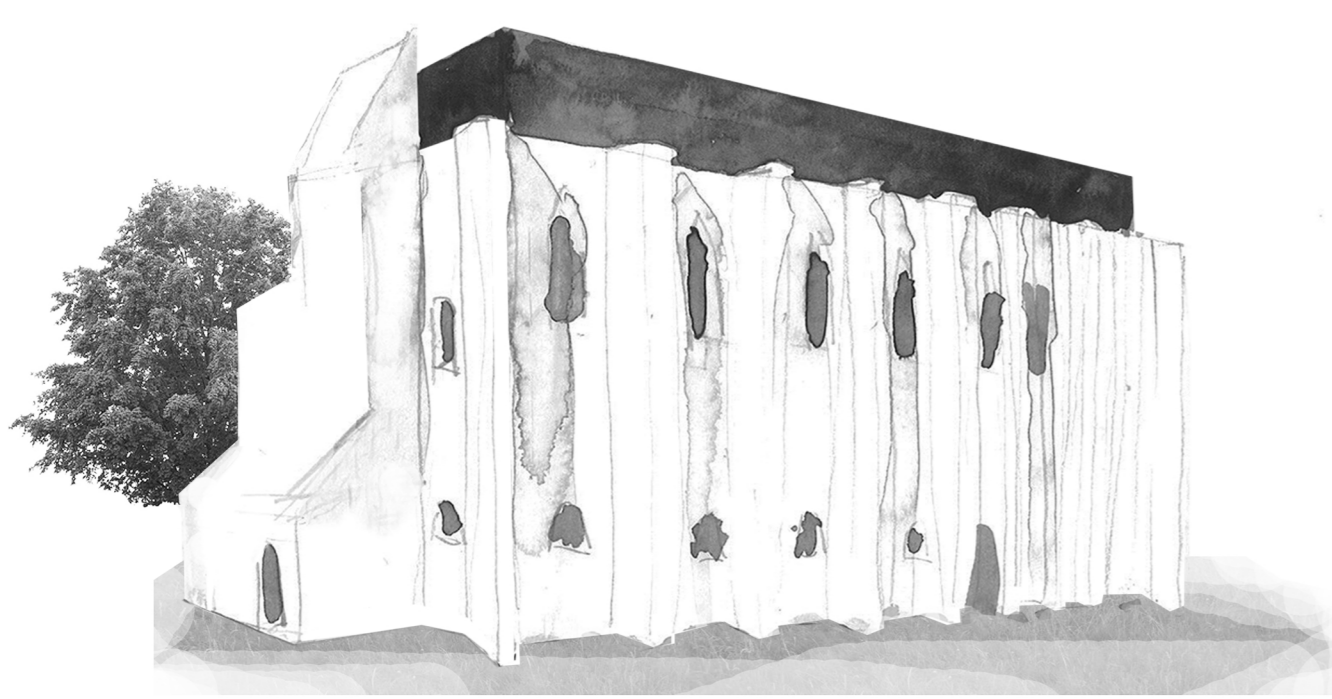


Figure 4. A watercolour exterior perspective of the church from the south west courtyard

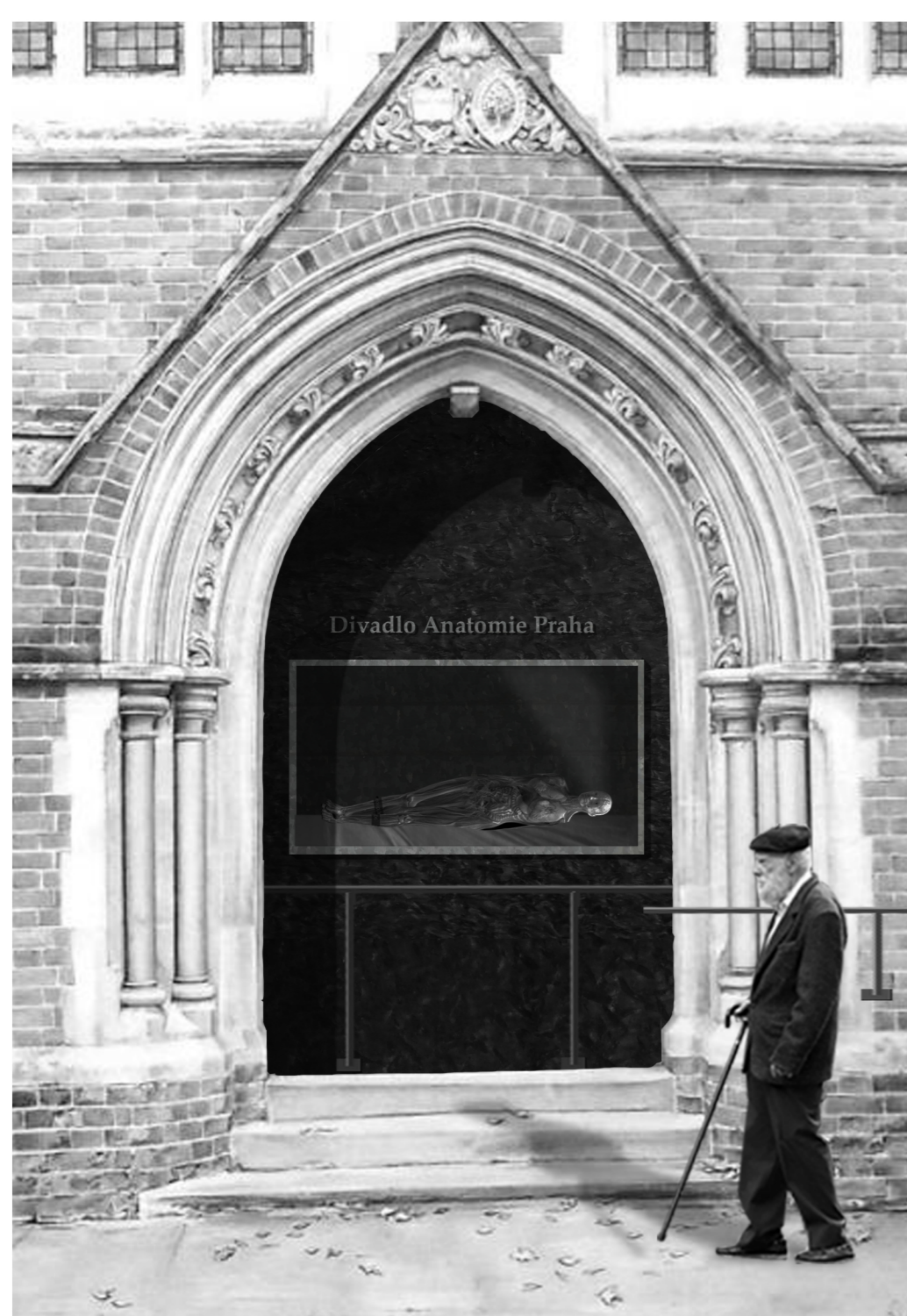


Figure 5. A view through the main entrance to the display cabinet

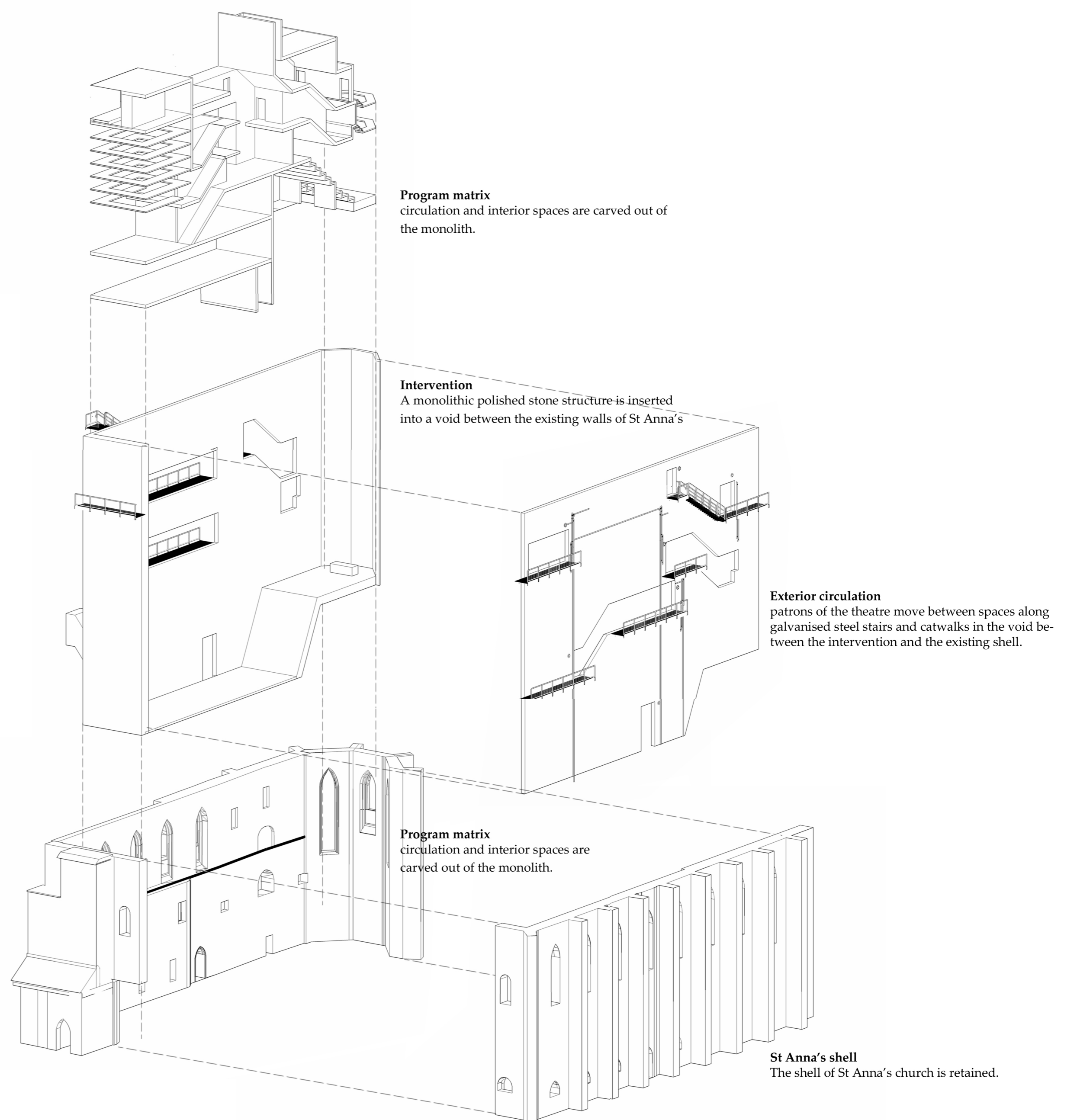


Figure 3. An exploded axonometric projection of the theatre showing the layout of the theatre