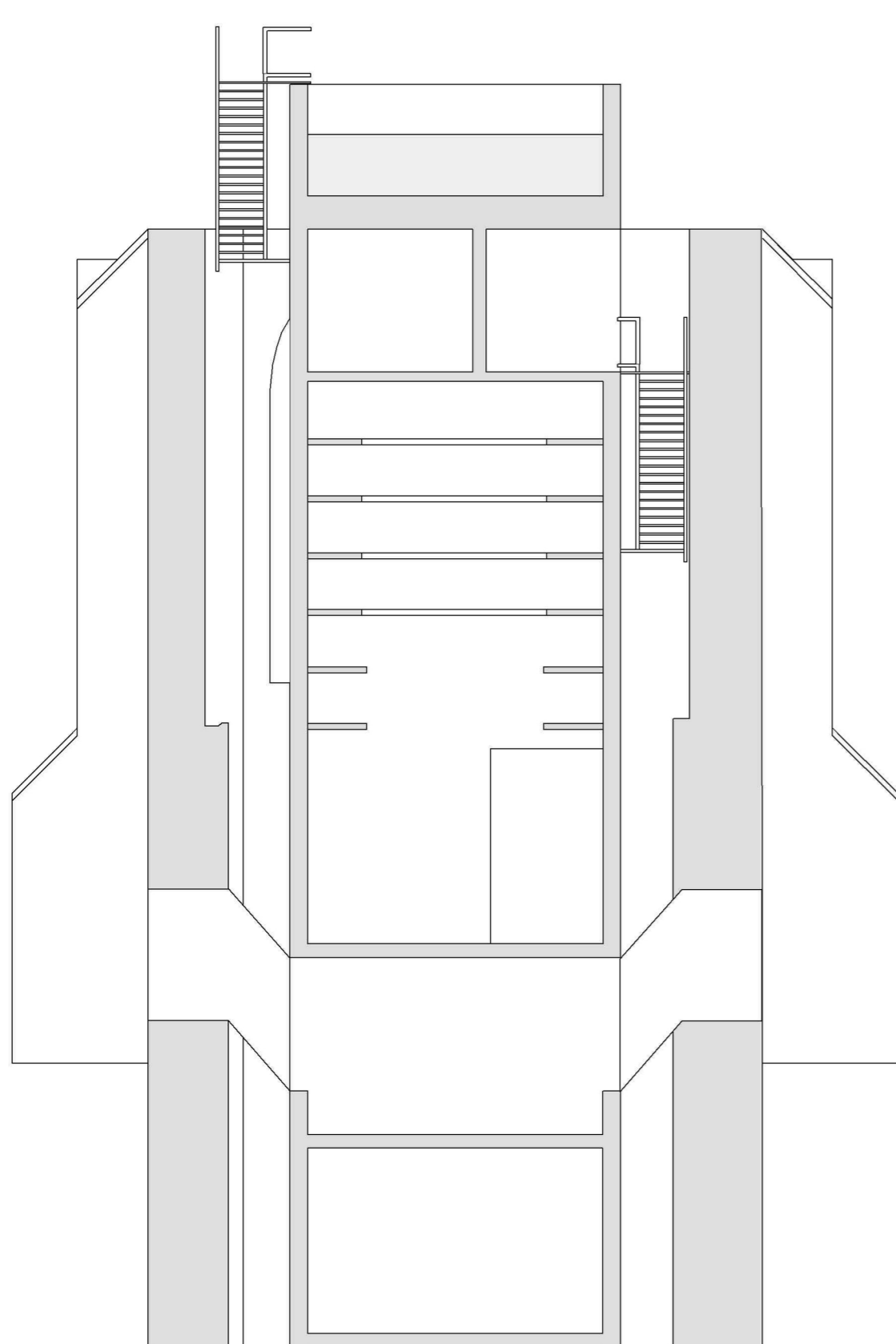


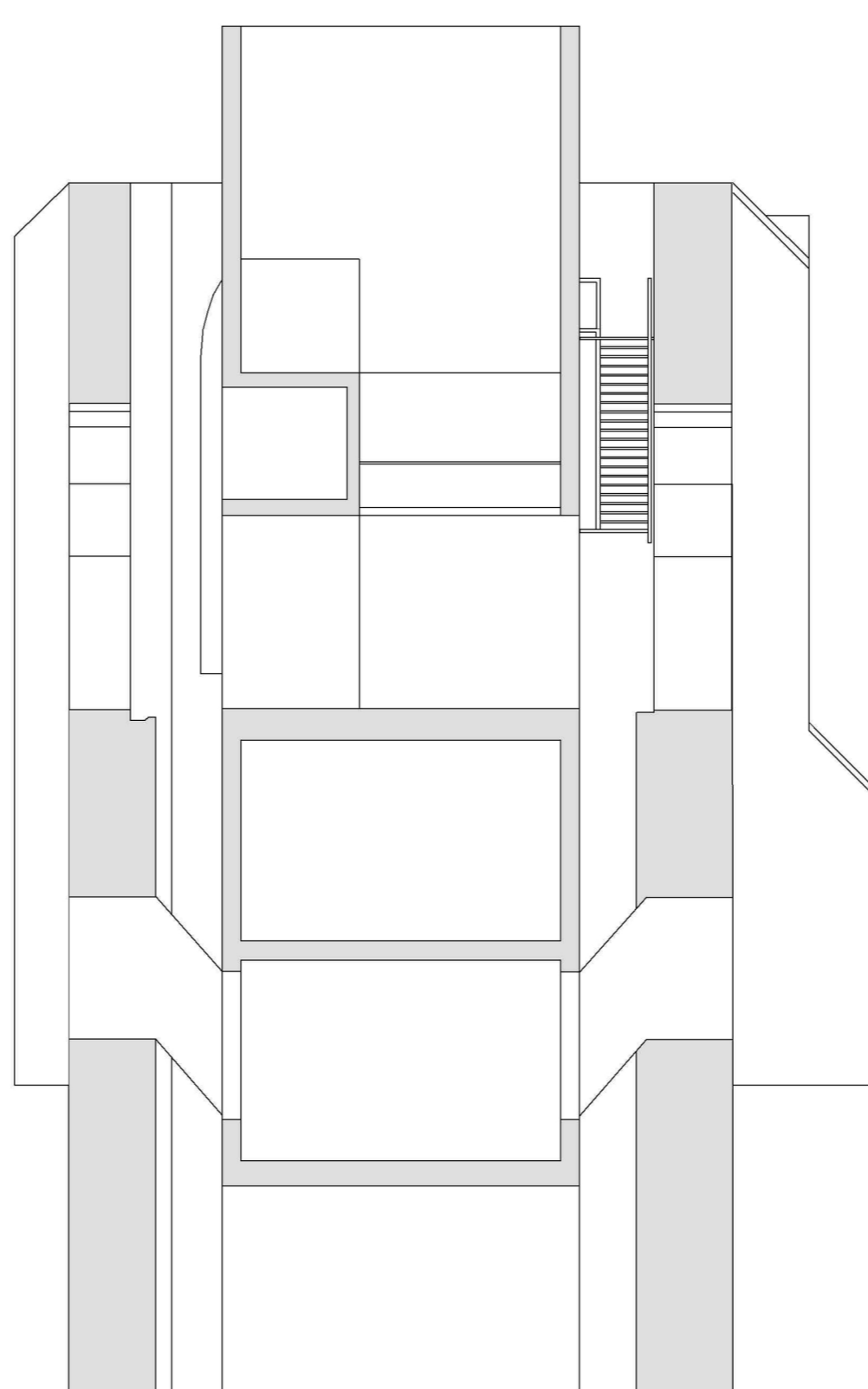


Section AA

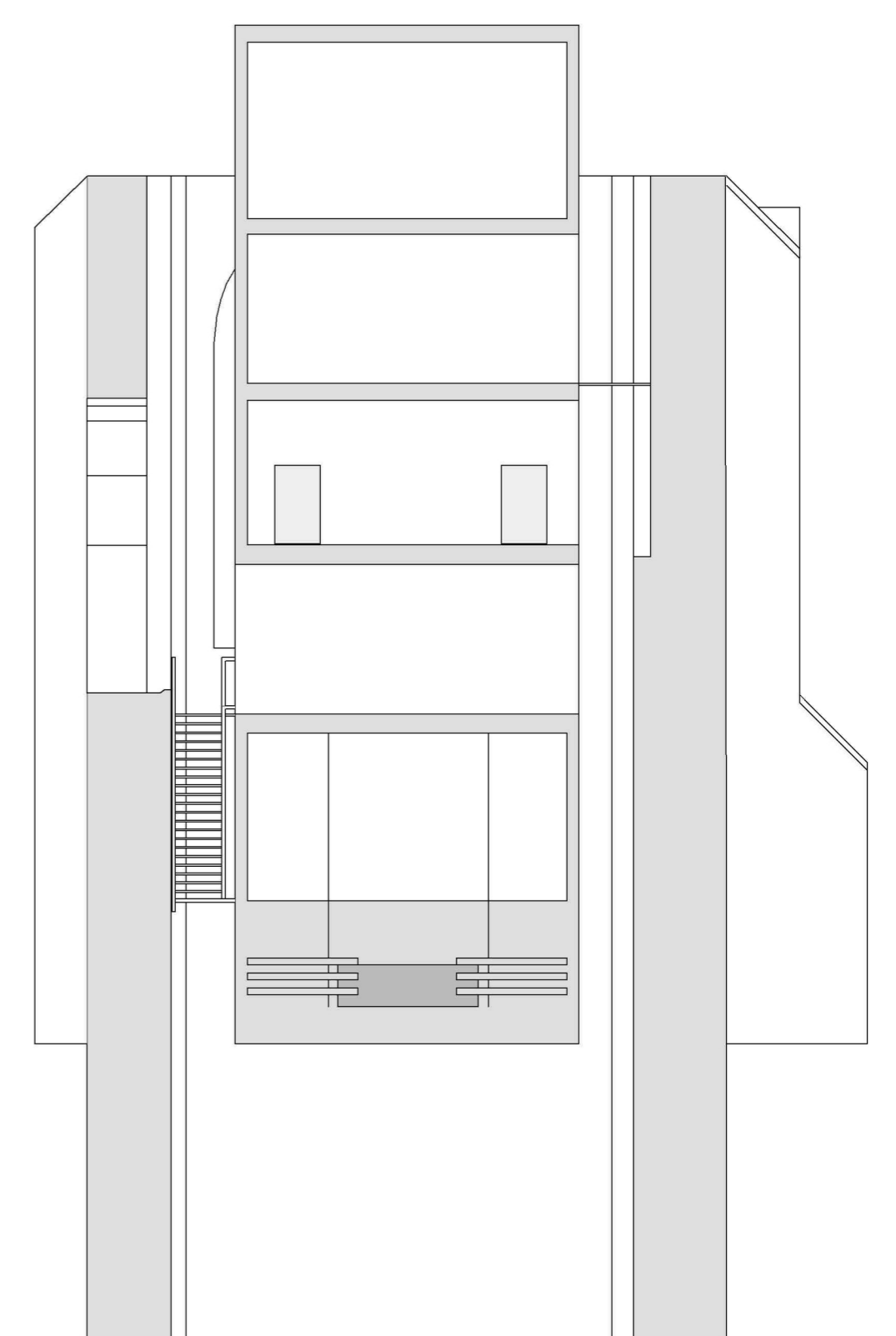
1. Skylight lined with polished local sandstone
2. Galvanised steel catwalk spans the void between the existing church and the intervention
3. A bar area extends above the main lobby space
4. Office space accessible via the lift or external circulation is well lit by light tunnels
5. Galvanised steel light tunnels fit the profiles of the existing windows of St. Anna's an provides ample light to the laboratory spaces
6. upper laboratory space
7. lower laboratory space and service area



Section BB



Section CC



Section DD

1. Skylight lined with polished acranite
2. Galvanised steel catwalk spans the void between the existing church and the intervention
3. A bar area extends above the main lobby space
4. Office space accessible via the lift or external circulation is well lit by light tunnels
5. Galvanised steel light tunnels fit the profiles of the existing windows of St. Anna's an provides ample light to the laboratory spaces
6. upper laboratory space
7. lower laboratory space and service area
8. Galvanised steel catwalk running between the old and the new structures
9. galvanised steel stairs provide access to roof space
10. Crypt with individual refridgeration units in a stack
11. Light tunnels provide light and ventillation to lower floor laboratory areas.