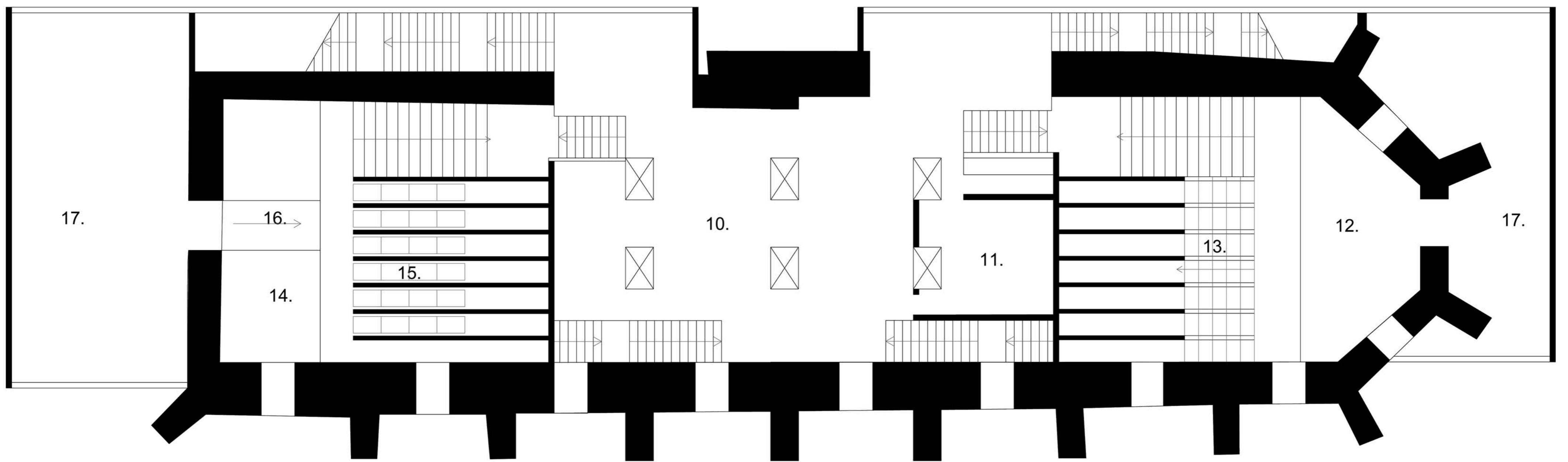
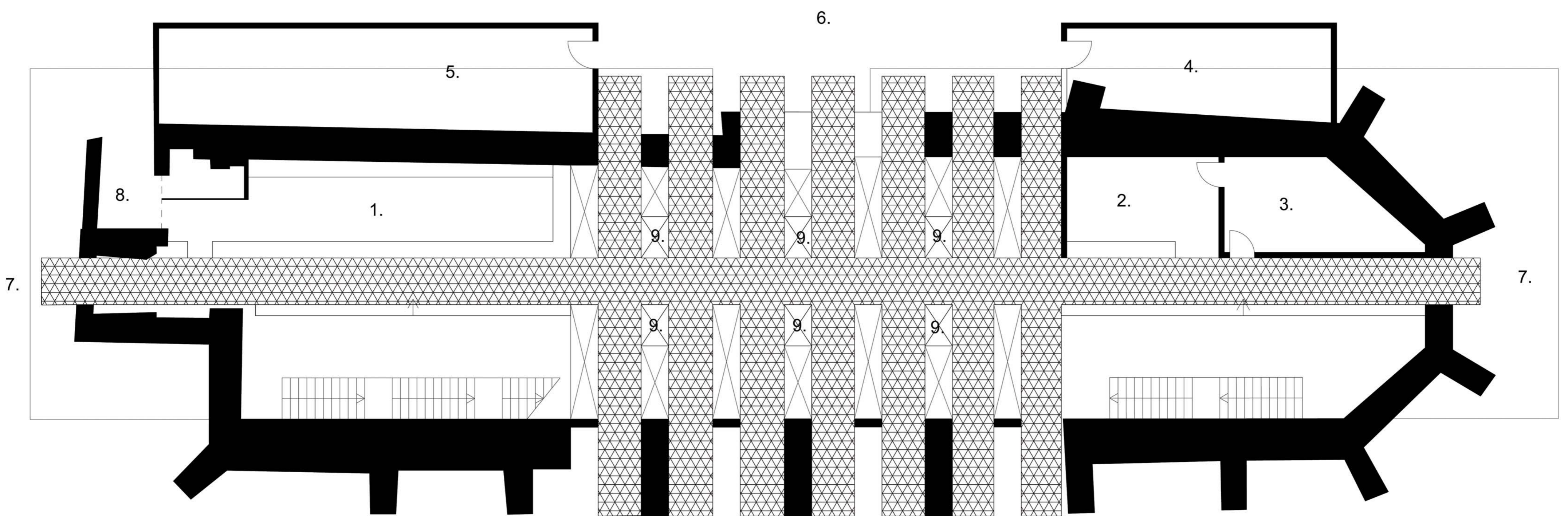


SECOND FLOORPLAN 1:100



FIRST FLOORPLAN 1:100



GROUND FLOORPLAN 1:100

1. BAR
2. BOX OFFICE
3. OFFICE
4. MENS BATHROOM
5. WOMENS BATHROOM
6. CONNECTION TO NORTH FACING COURTYARD
7. NUMEROUS ENTRANCES
8. STORAGE/DOCK
9. LIFT
10. CIRCULATION AREA
11. TICKET BOOTH
12. EAST STAGE (LIGHT)
13. STEEP SEATING
14. WEST STAGE (DARK)
15. INDIVIDUAL SEATING (BETWEEN TRUSSES)
16. MOVING STAGE AREA
17. BACK OF STAGE
18. TOP STAGES
19. AUDIENCE SEATING