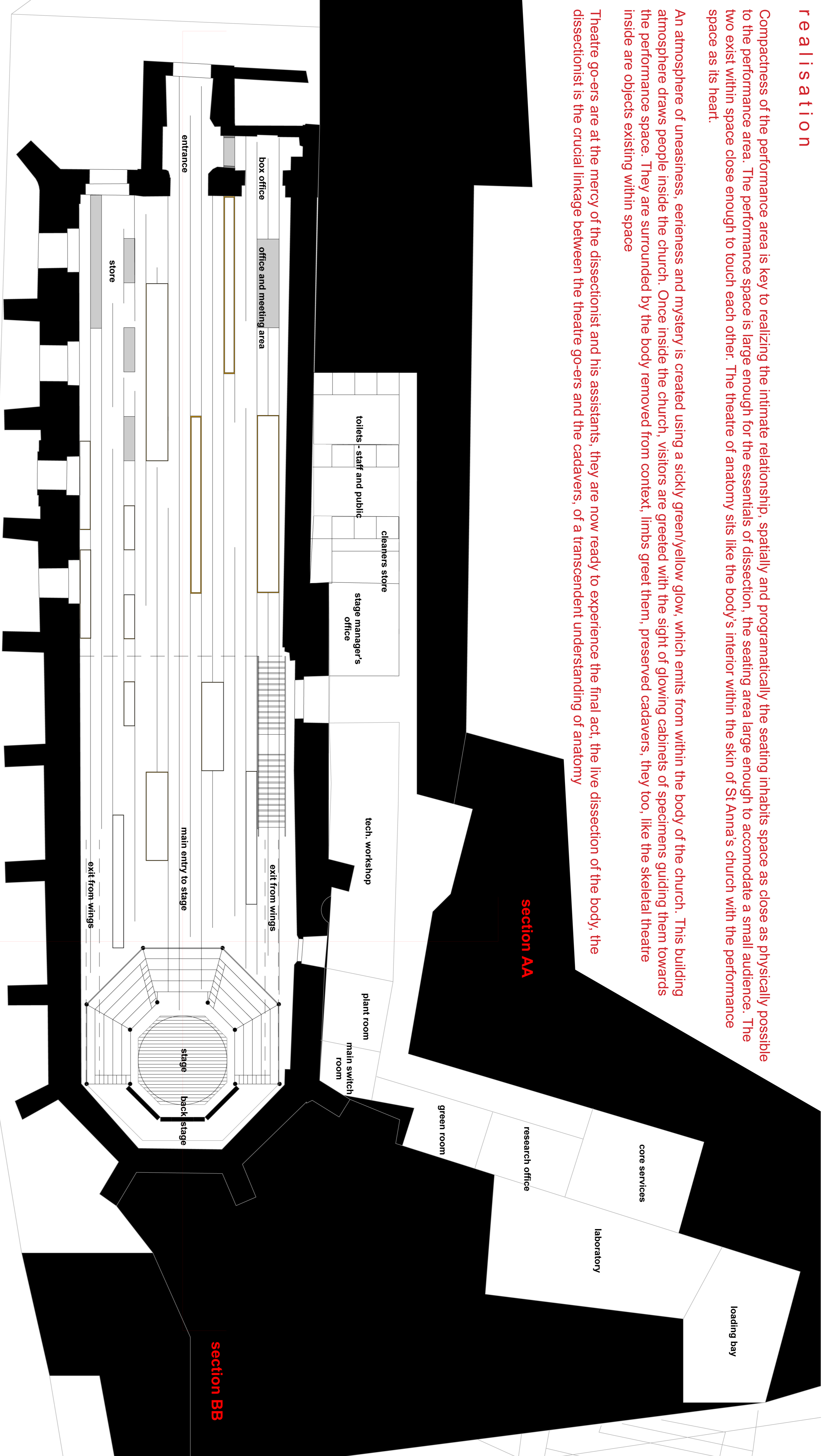


realisation

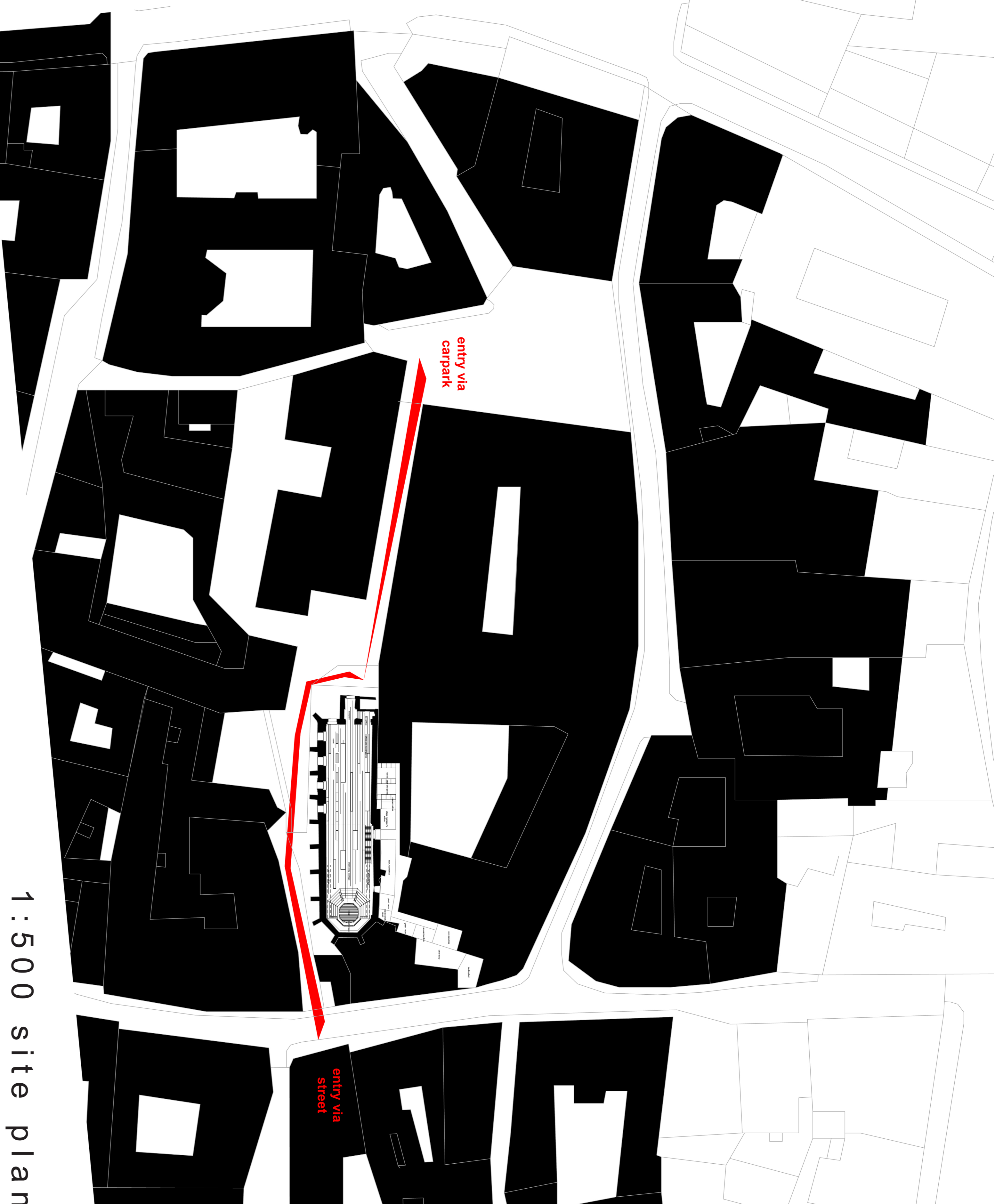
Compactness of the performance area is key to realizing the intimate relationship, spatially and programatically the seating inhabits space as close as physically possible to the performance area. The performance space is large enough for the essentials of dissection, the seating area large enough to accommodate a small audience. The two exist within space close enough to touch each other. The theatre of anatomy sits like the body's interior within the skin of St Anna's church with the performance space as its heart.

An atmosphere of uneasiness, eeriness and mystery is created using a sickly green/yellow glow, which emits from within the body of the church. This building atmosphere draws people inside the church. Once inside the church, visitors are greeted with the sight of glowing cabinets of specimens guiding them towards the performance space. They are surrounded by the body removed from context, limbs greet them, preserved cadavers, they too, like the skeletal theatre inside are objects existing within space

Theatre go-ers are at the mercy of the dissectionist and his assistants, they are now ready to experience the final act, the live dissection of the body, the dissectionist is the crucial linkage between the theatre go-ers and the cadavers, of a transcendent understanding of anatomy



1:100 ground floor plan



1:500 site plan

atmosphere

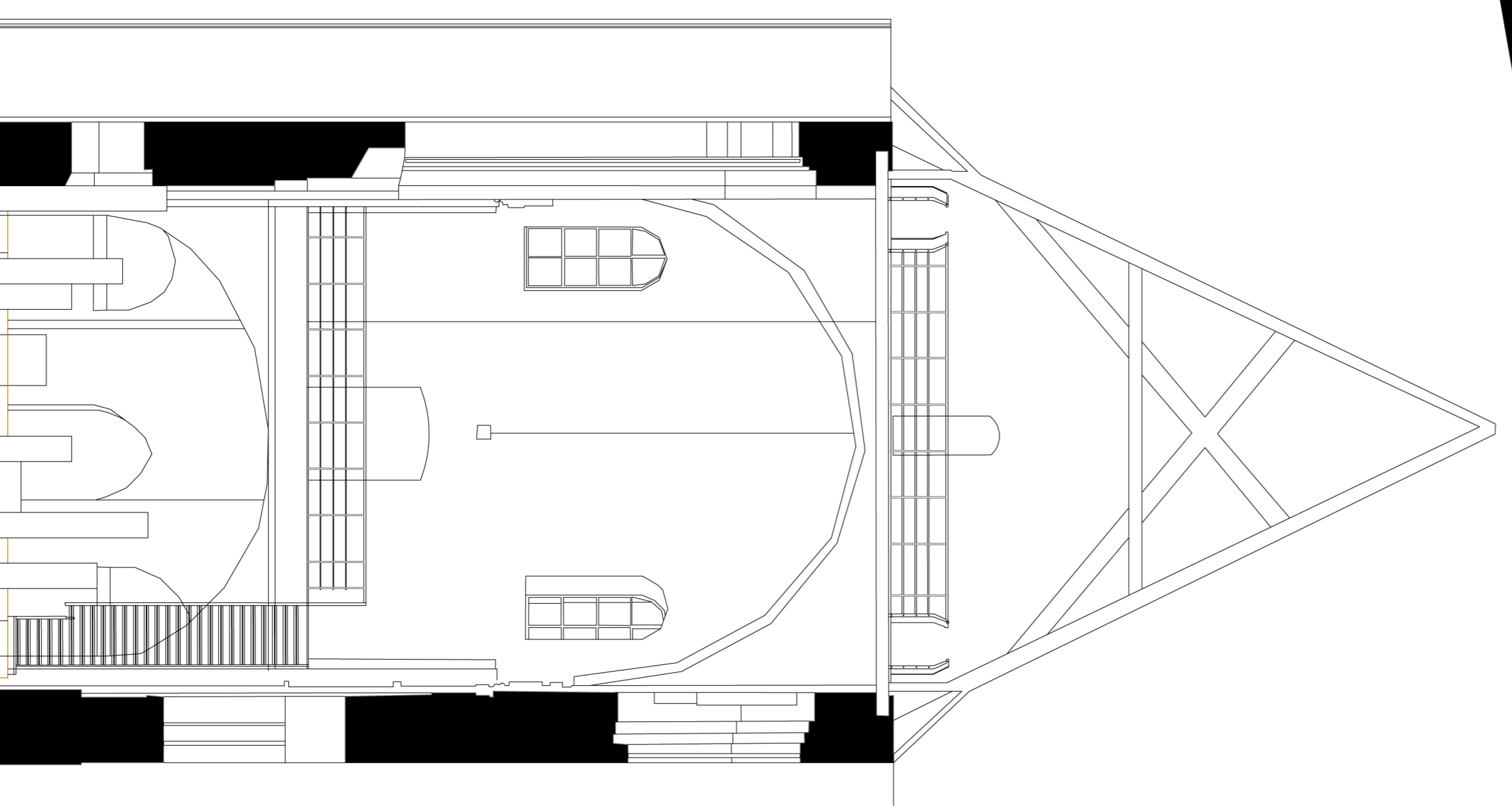
Key to the success of the theatre is the atmosphere that permeates the space, to establish that mystic link between audience and performer, audience inhibitions should be broken down. As the audience walks towards the entrance of the church, they must undertake a journey through the streets of Prague, finding their way around buildings, using the mysterious light emanating from the church to guide them. It is both a guiding beacon, and a source of unease, its light points the way but also creates shifting shadows against the surrounding buildings, through one of the windows of the church the audience can glimpse the specimens in their cabinets. The oppressive dark and solidity of the surrounding buildings forces them to walk on regardless.

concept

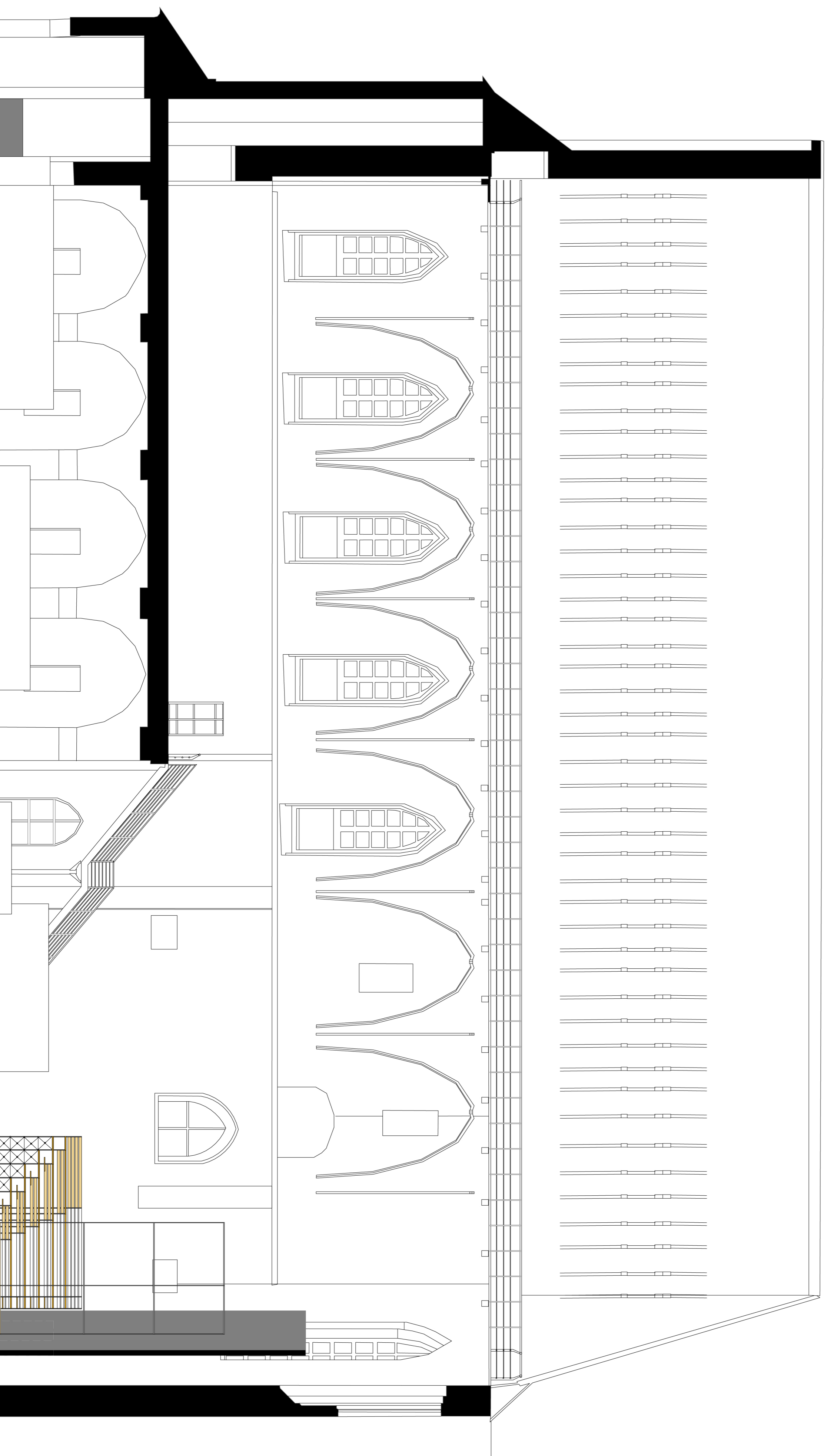
Theatre of anatomy is an exploration of gross anatomy, anatomy which can be seen with the naked eye. Exposure is a key theme, as with any theatre the actions of performer take centre stage. Design was reinforced by the idea that the audience should be able to focus on the subtleties of gross anatomy, the hands as they cut and dissect the body, this is the degree of intimacy and intensity that is required.

The full impact of the performance is only experienced when performer and audience establish an intimate link. Concentration, focus, intensity within only the performance space, all other distractions must be kept outside the performance space. The act of dissection is kept simple and pure as a celebration of the anatomy.

The theatre and the performance space must enclose the audience like skin does the muscle inside, the theatre space should be compact and concise like the anatomy of a limb. The sanctity of the existing building fabric is maintained, what is of more importance here is telling a story about the plunging journey through the different layers of a dissection.



1:100 section BB



1:100 section AA