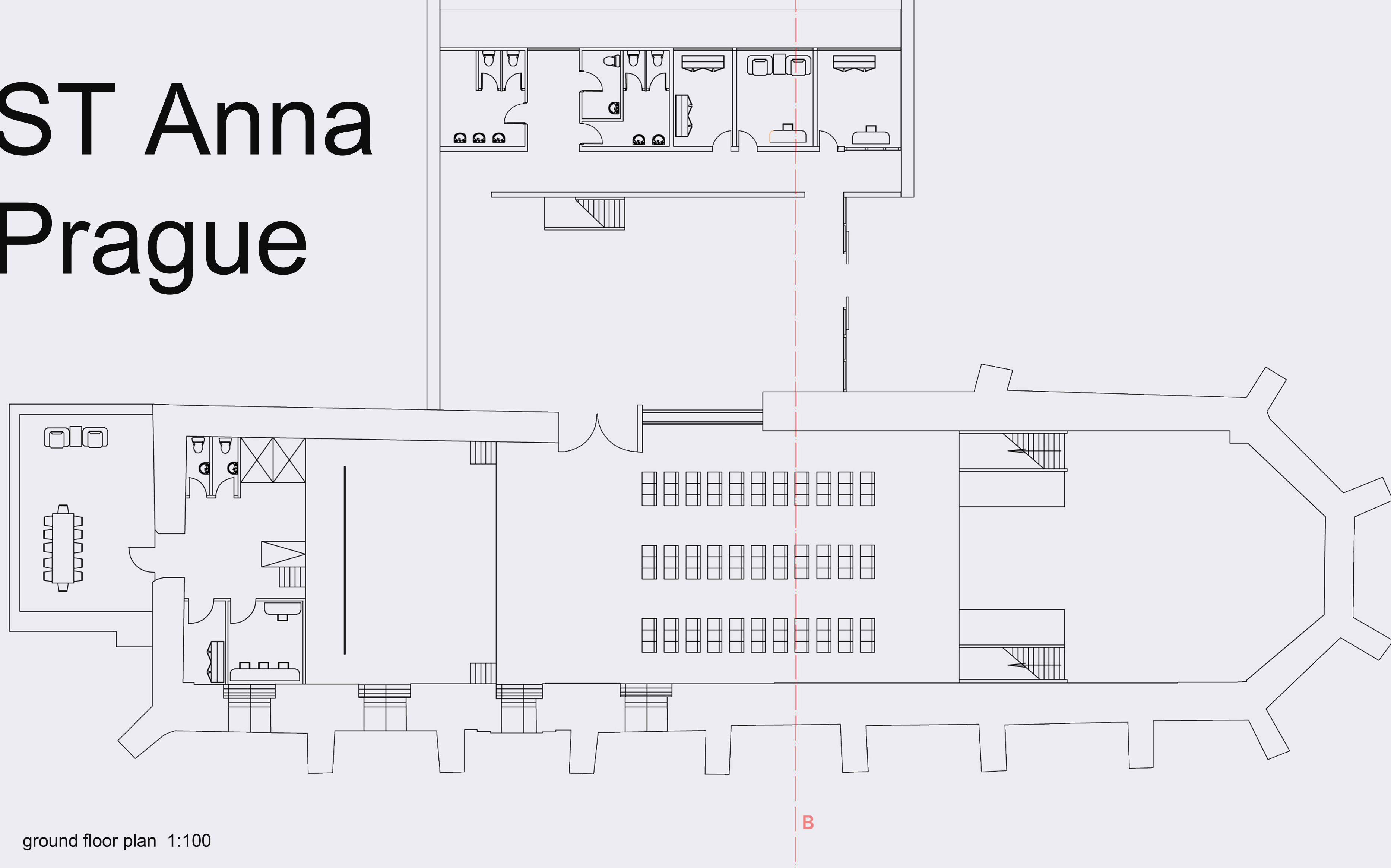
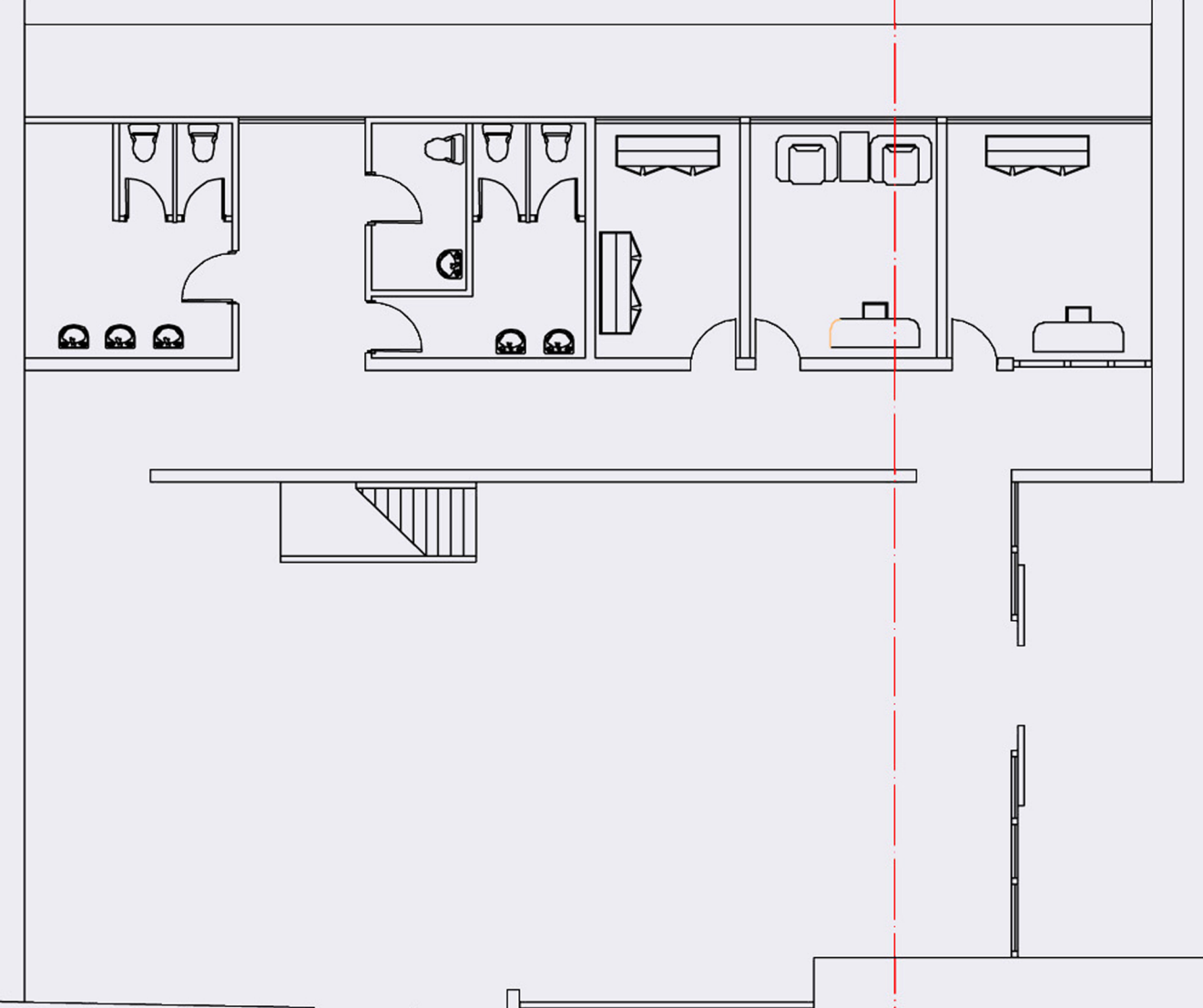


# ST Anna Prague

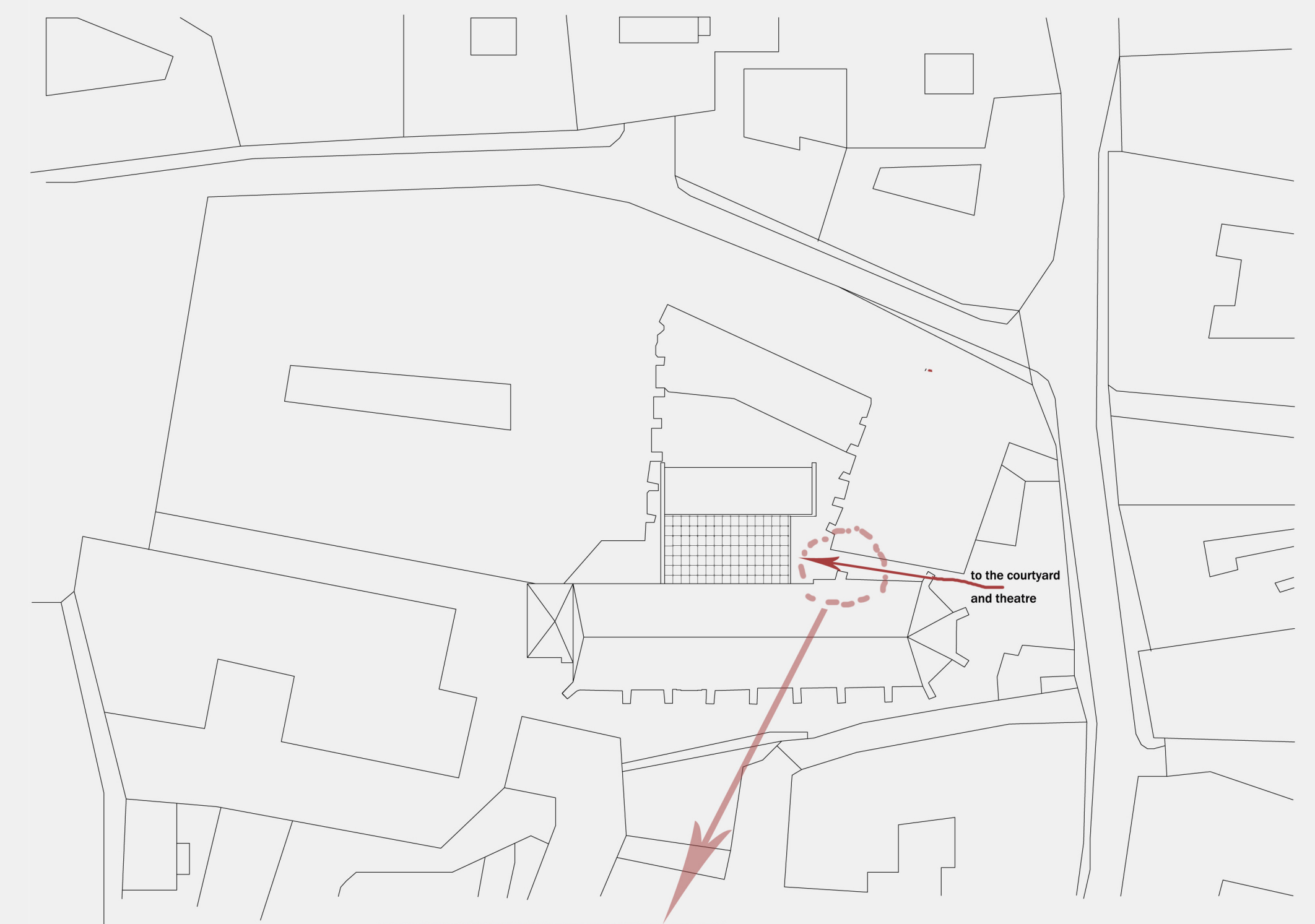


ground floor plan 1:100

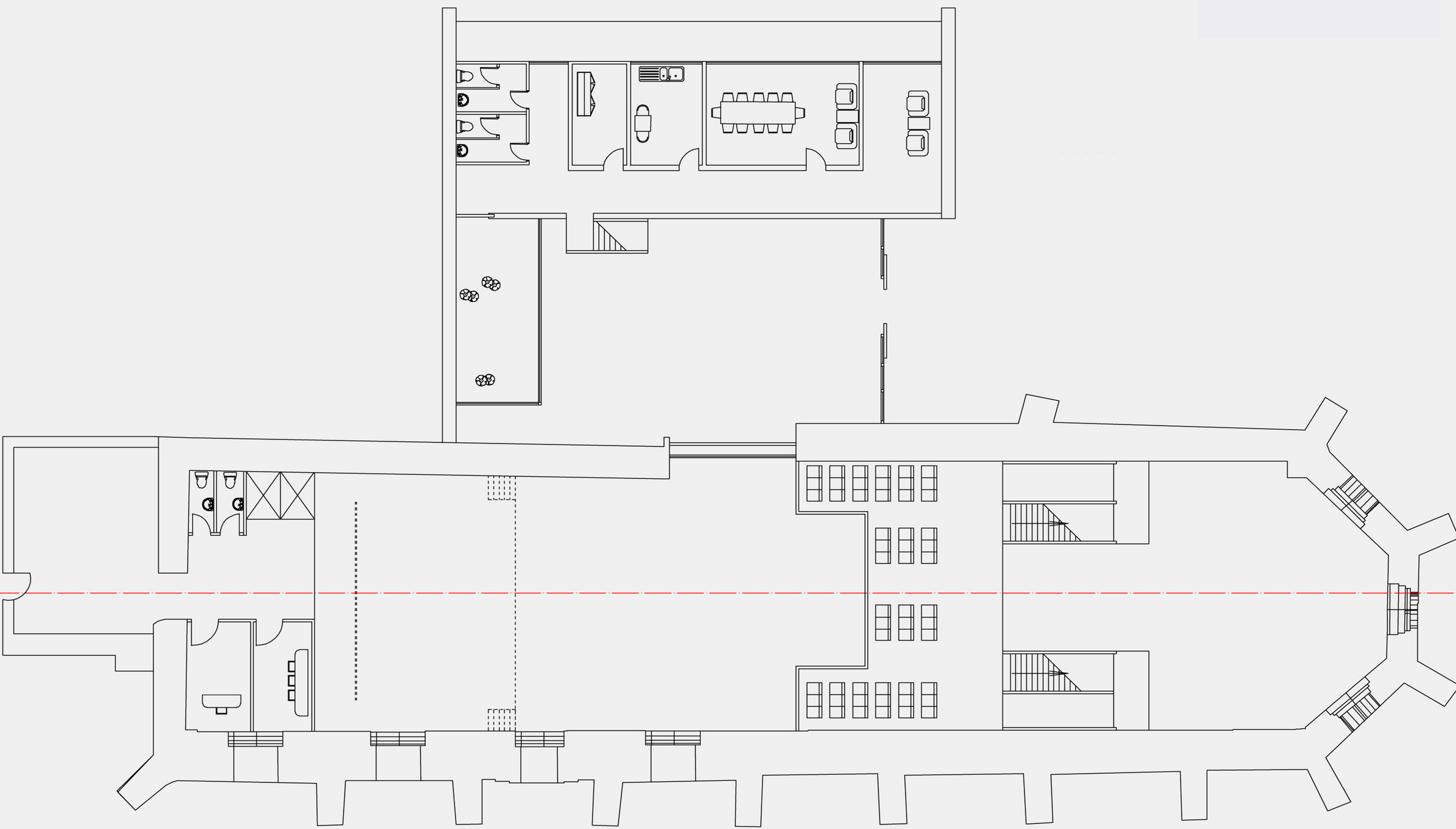
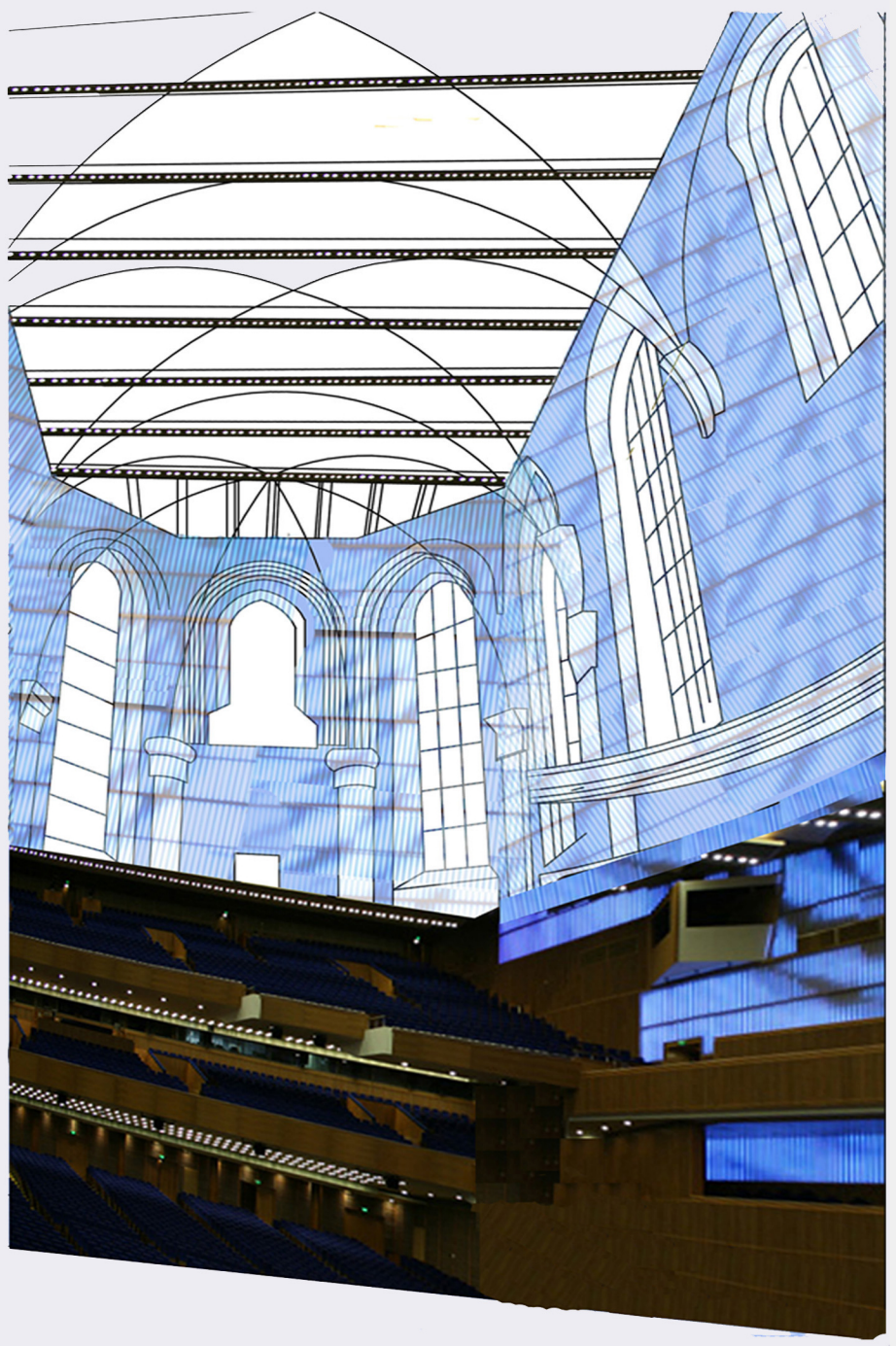


## Body Occupation

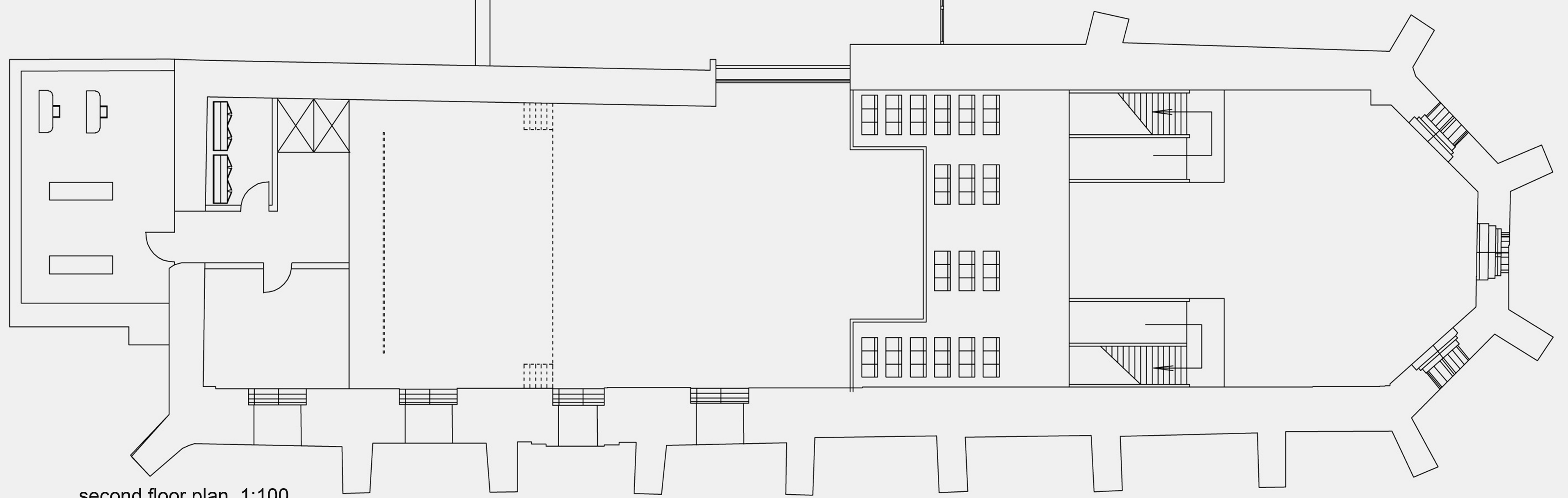
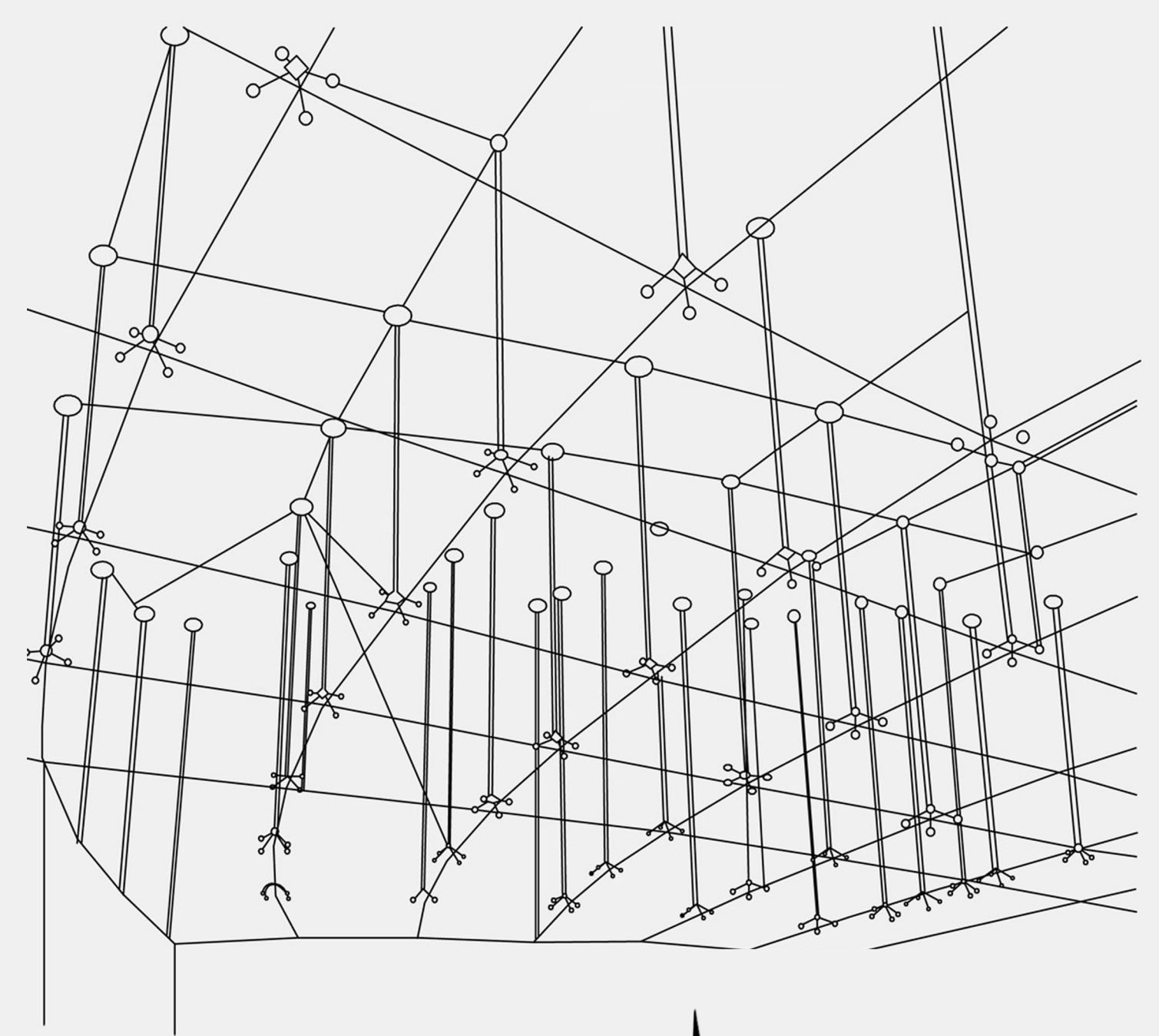
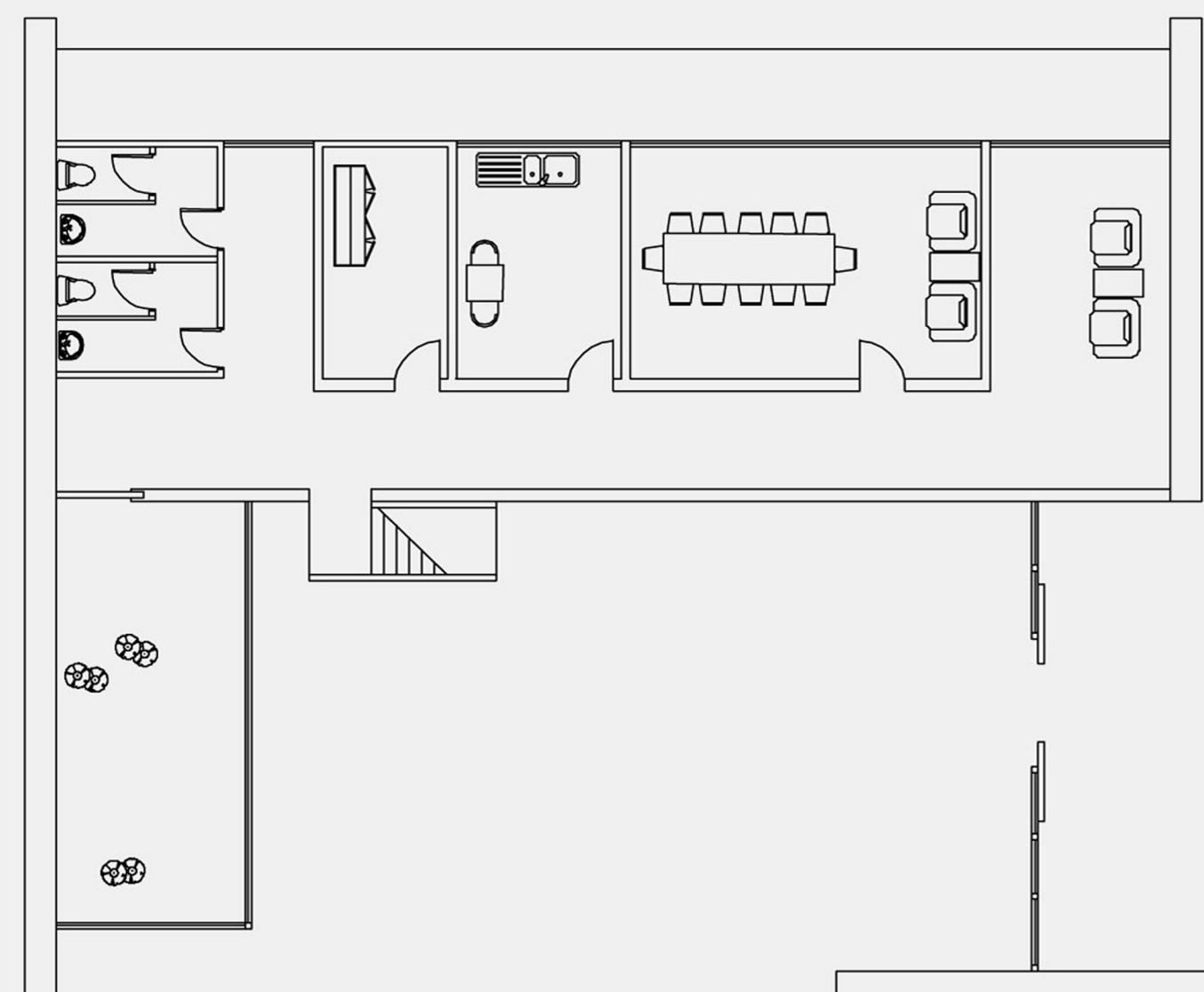
Compare with the other body organs, the brain is not the biggest in volume. However it contains the most important neural system which can control our emotion and action. The brain can be described as a mainframe which has all the information of our body component, it is the leader of our body. So in the aspect of function, the brain occupies the most significant position. And the shape of human's skull is like a dome ceiling in the ancient sanctuary. The hollow space under the dome ceiling makes the sanctuary or temple grand, sacred and holy. This gives me the inspiration, I came up with the concept of keeping the grandness and holiness of the church. This doesn't mean don't change the existing church at all. What I am going to do is to reorganize the space to make the church more grand and more holy than before.



site plan 1:500

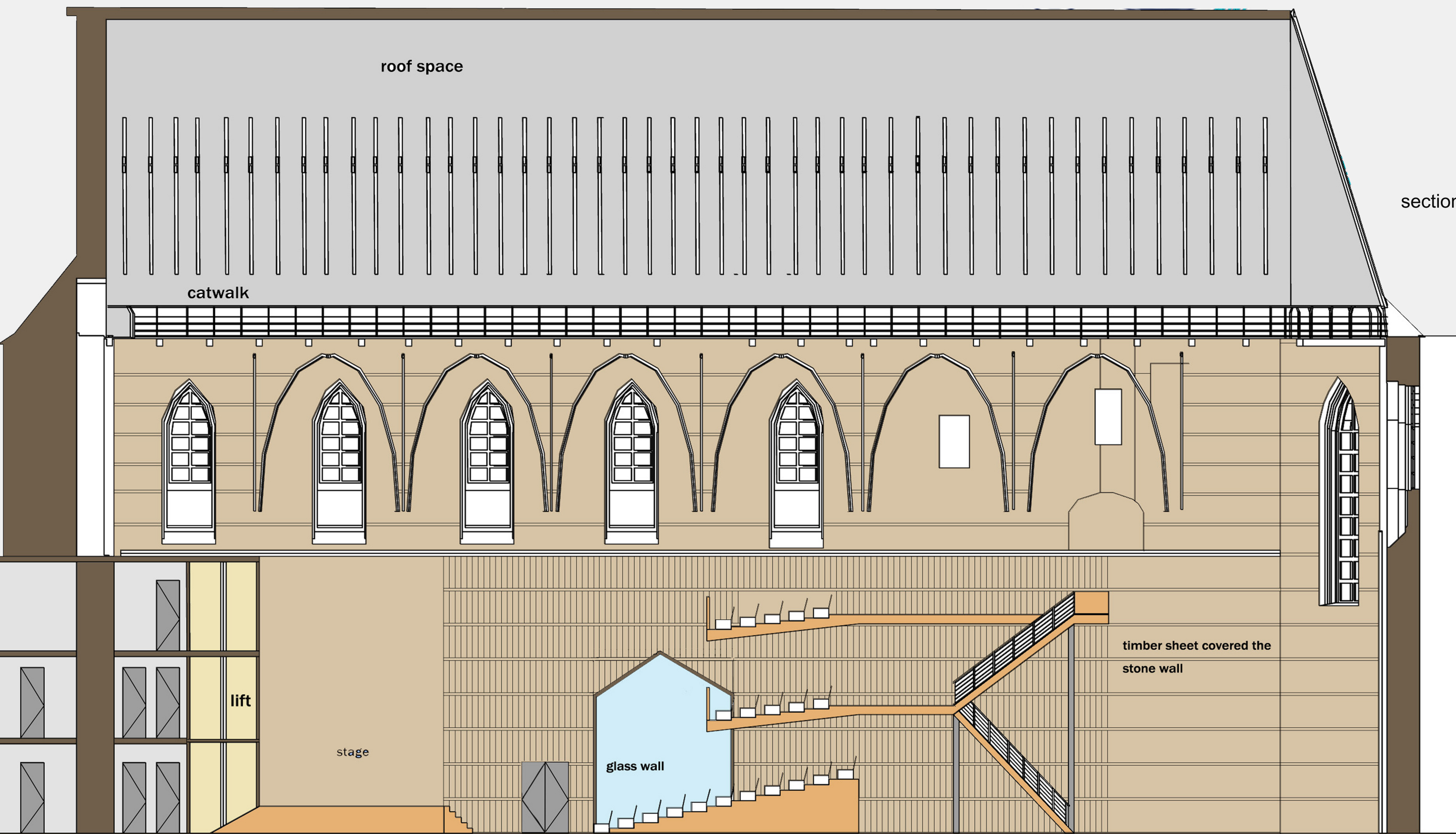


first floor plan 1:100



second floor plan 1:100

section A-A 1:100



section B-B 1:100

