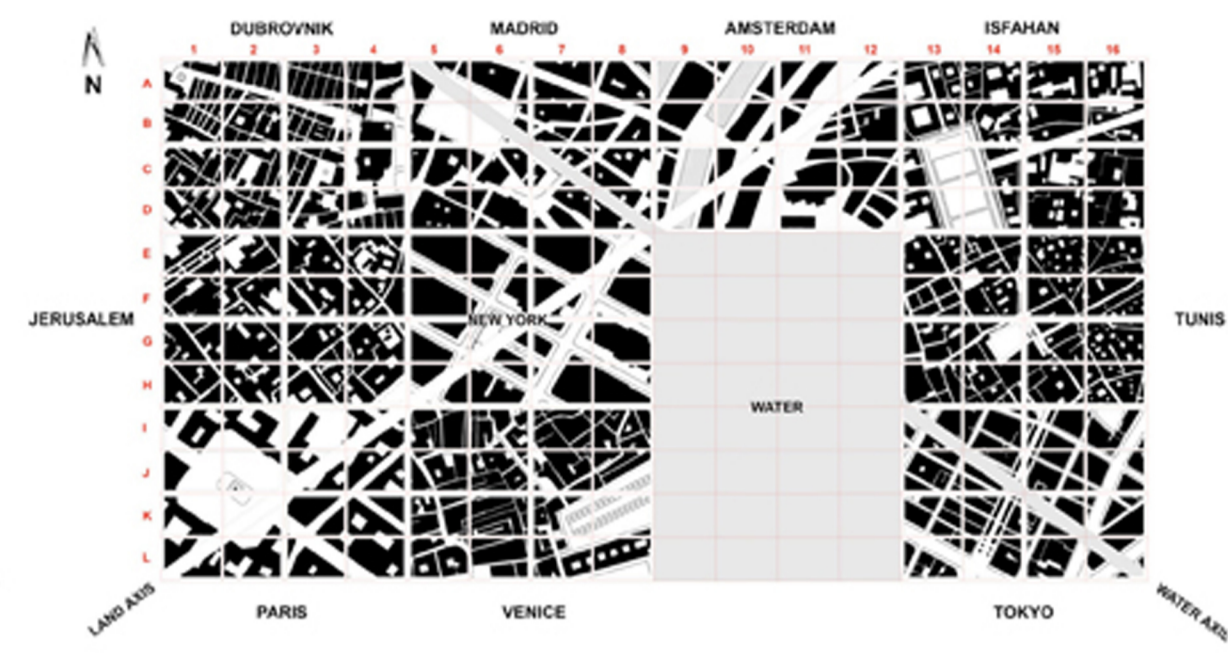


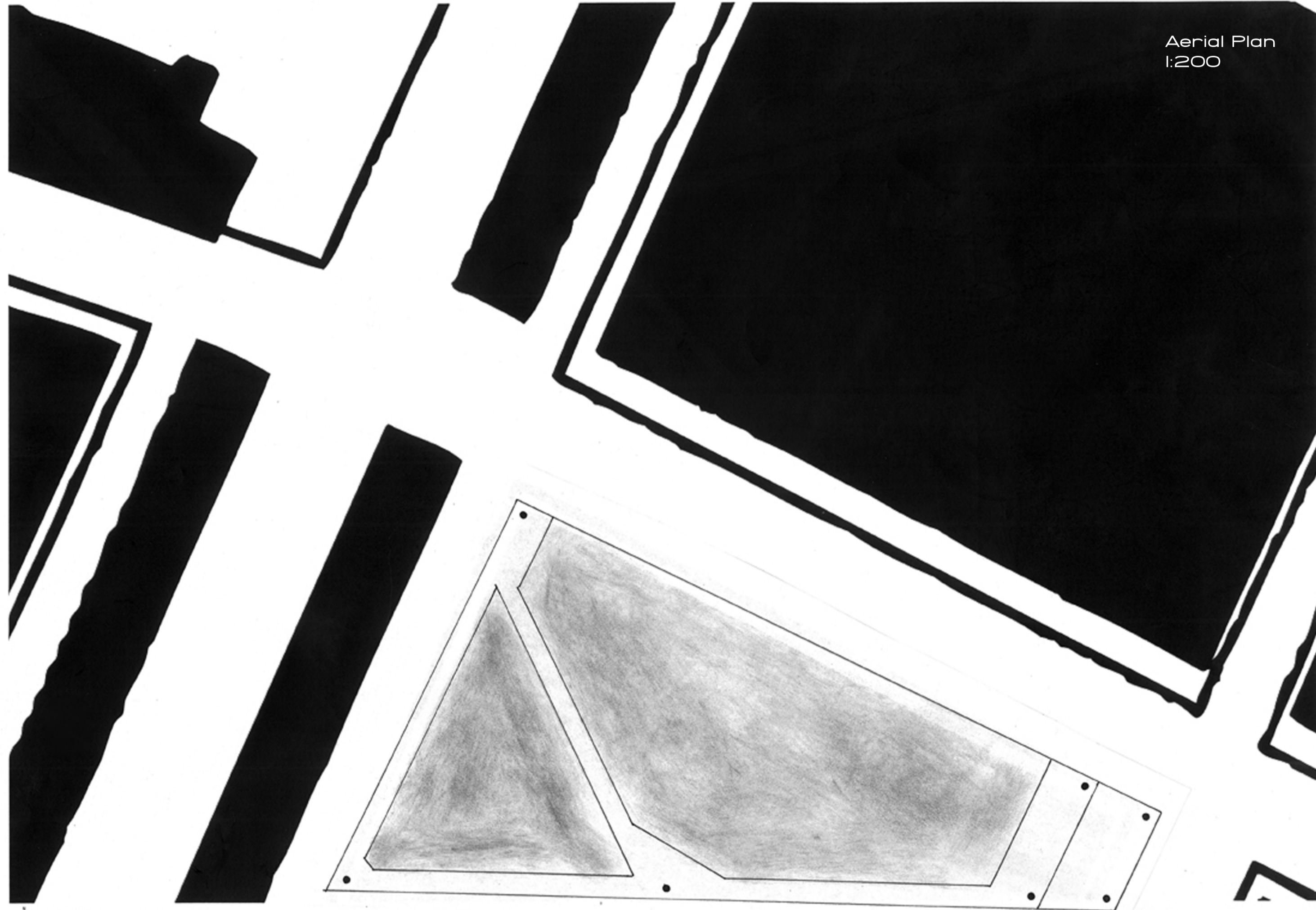
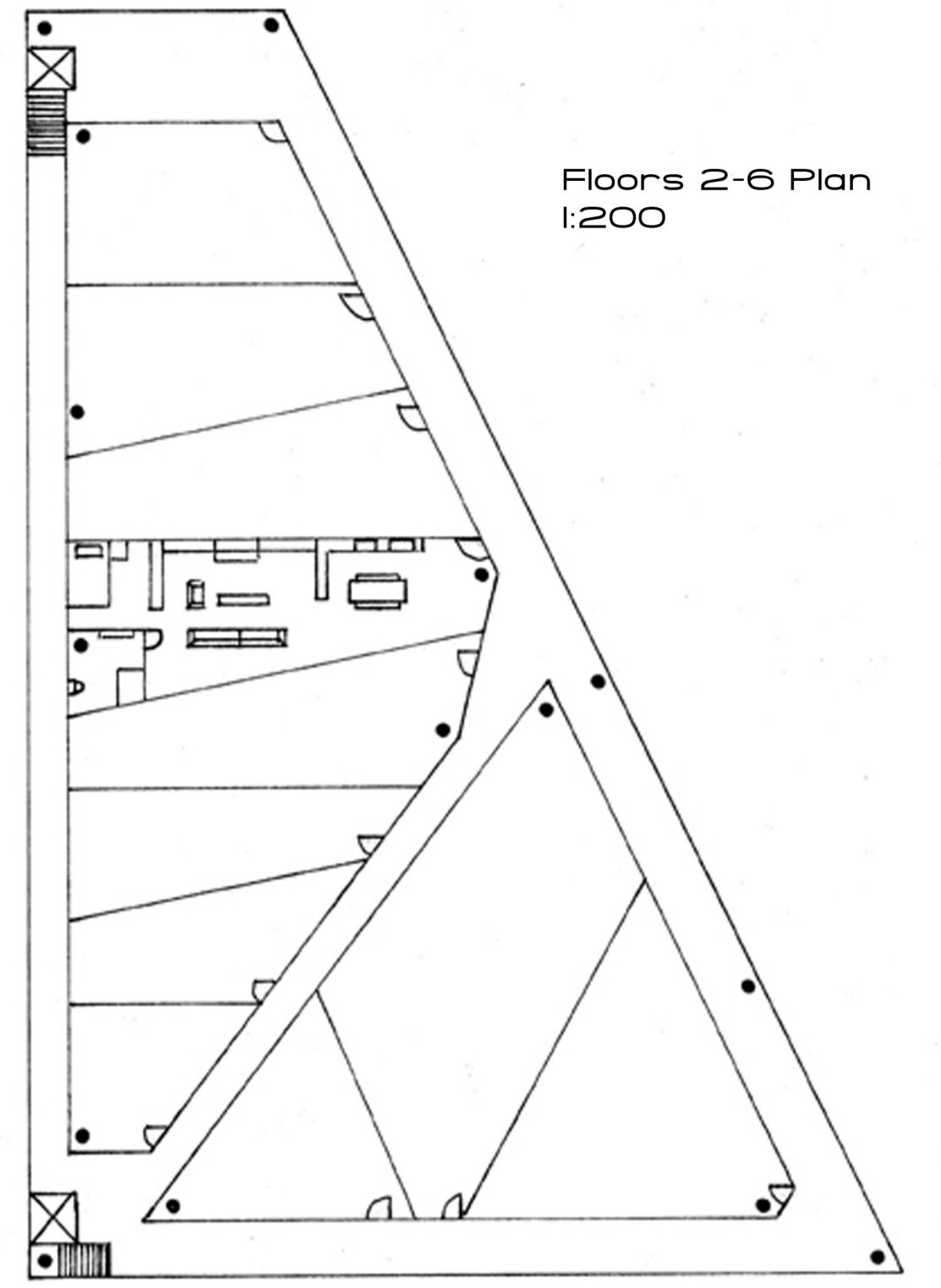
# OPACITY

Opacity, a building located in the downtown Tokyo region, utilises the copper, glass and timber aesthetic to create a living environment that both intrigues and captures the viewers eye. Spanning over a vast 635m<sup>2</sup> plot of land, Opacity hosts fifty-five spacious serviced apartments, luxuriously furnished and allowing for spectacular panoramic views of the city through the use of oversized glass panels. The ground floor itself hosts a thoroughway allowing for guests and visitors alike to pass through whilst enjoying adjacent market stalls allowing for access into the building. Opacity is also home to a full time, highly regarded, sushi bar, as well as state-of-the-art gym facilities and a full-time cafe. Offered is an amazing opportunity to experience Tokyo whilst being able to thrive within Opacity's walls - don't miss out.

Site Plan  
Ref. L15  
1:10 000

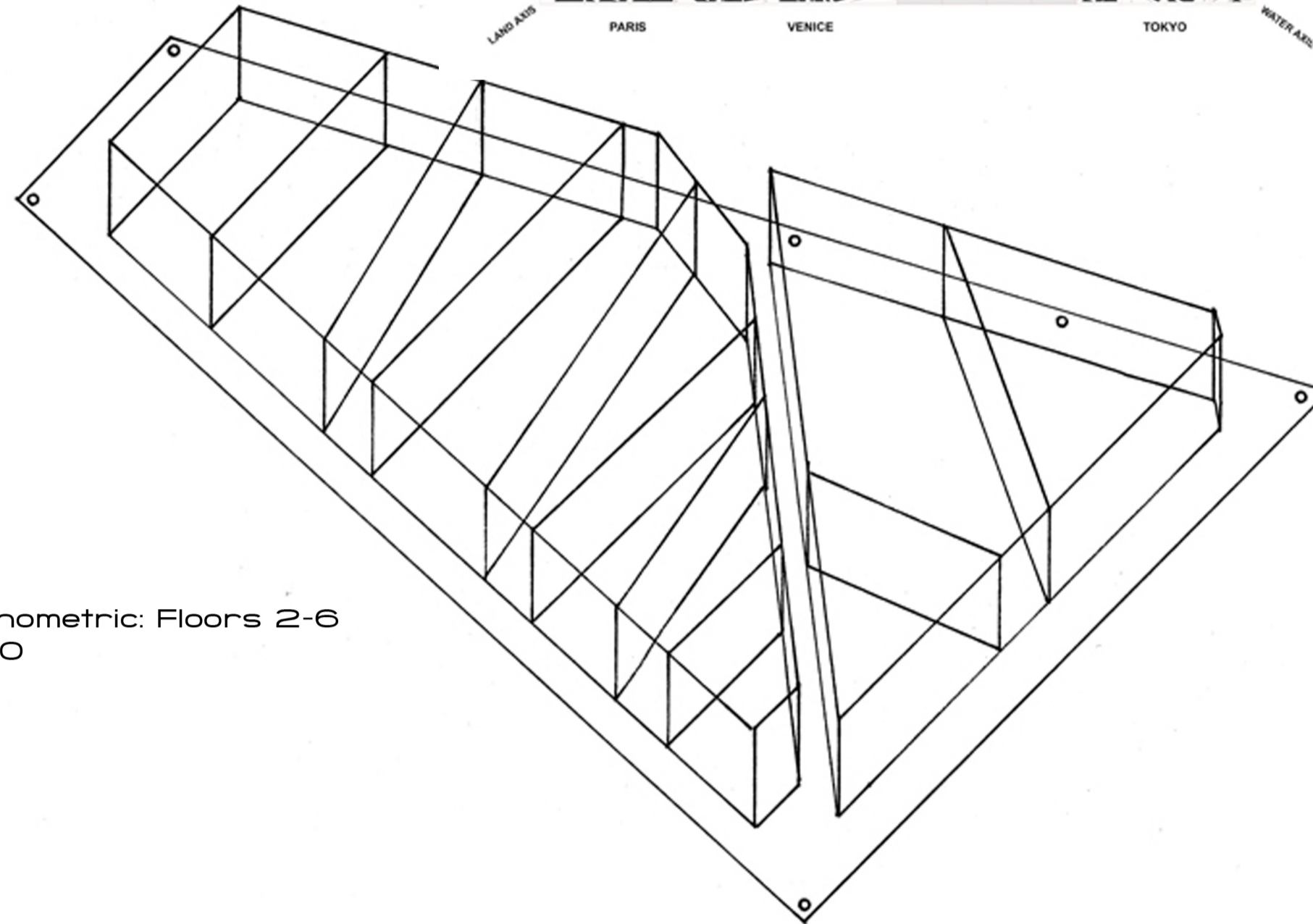


Floors 2-6 Plan  
1:200

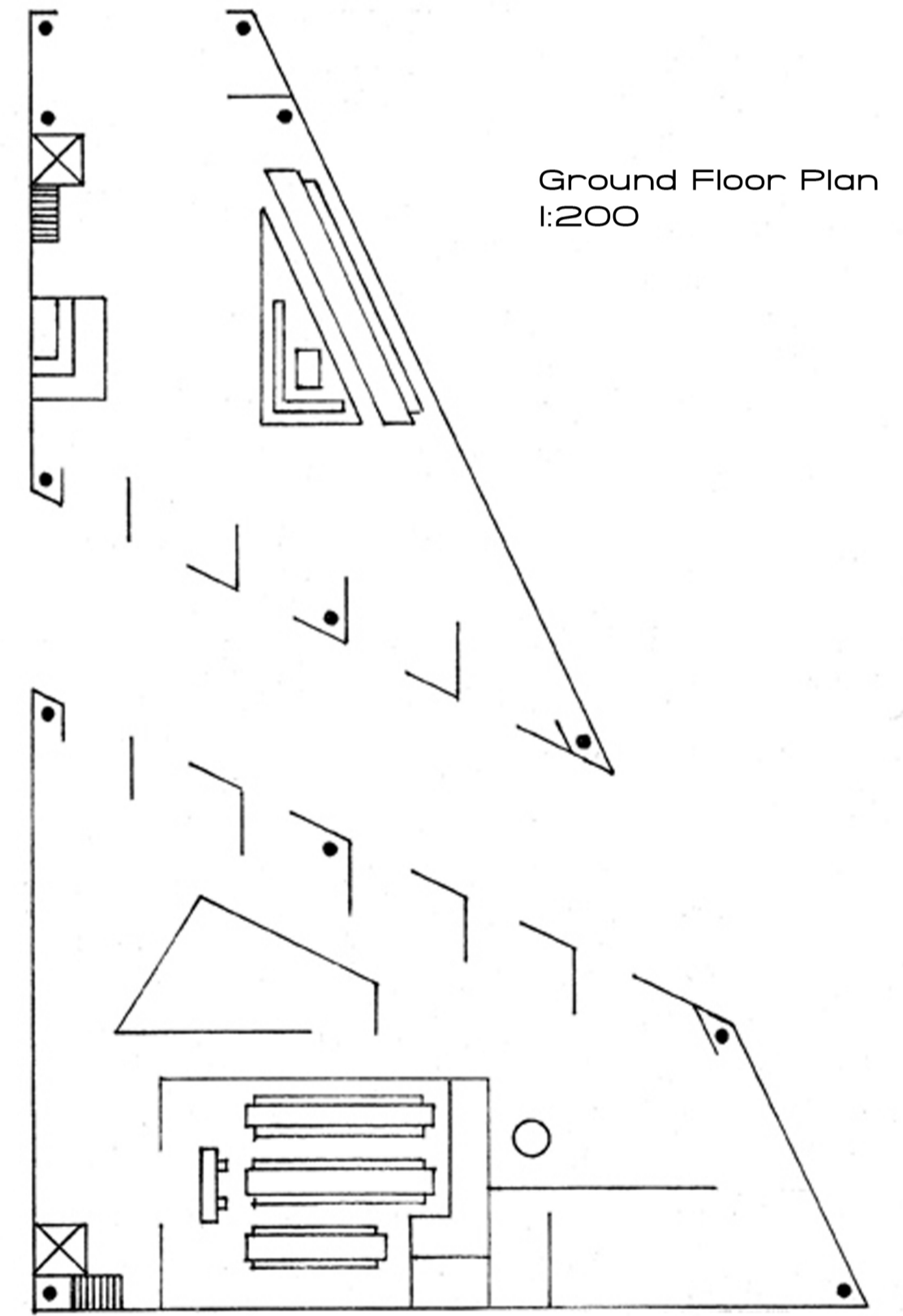


Aerial Plan  
1:200

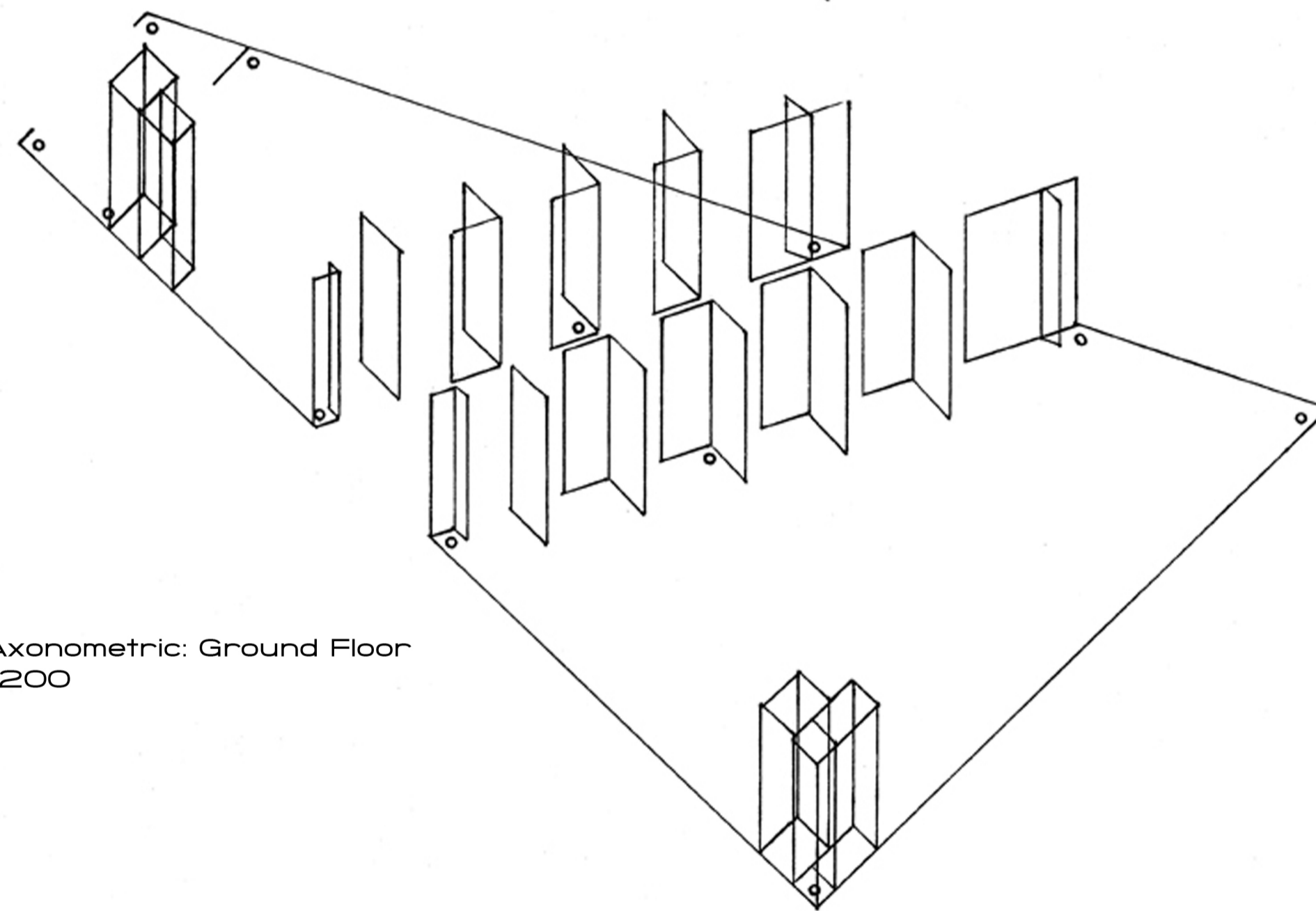
Axonometric: Floors 2-6  
1:200



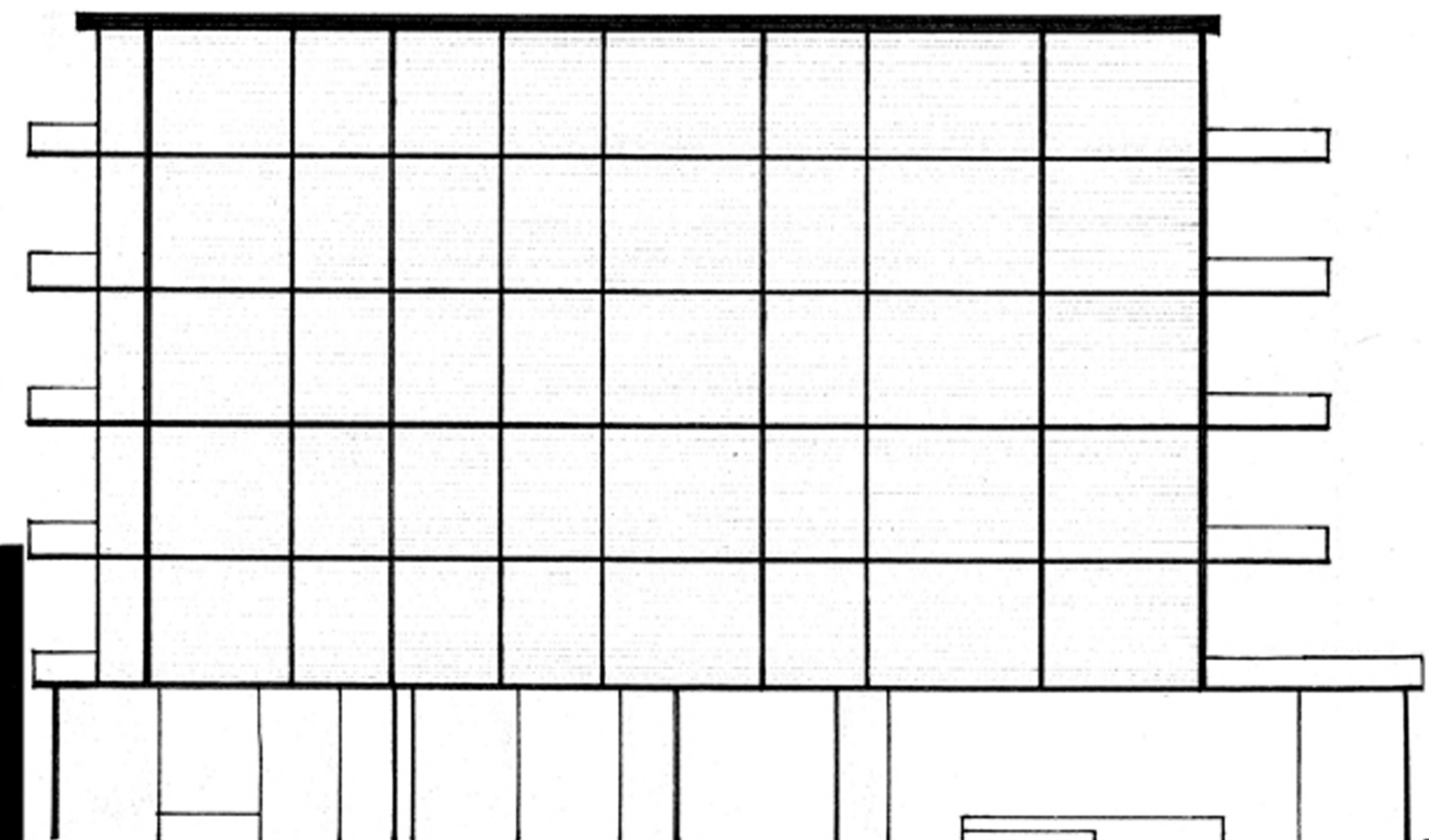
Ground Floor Plan  
1:200



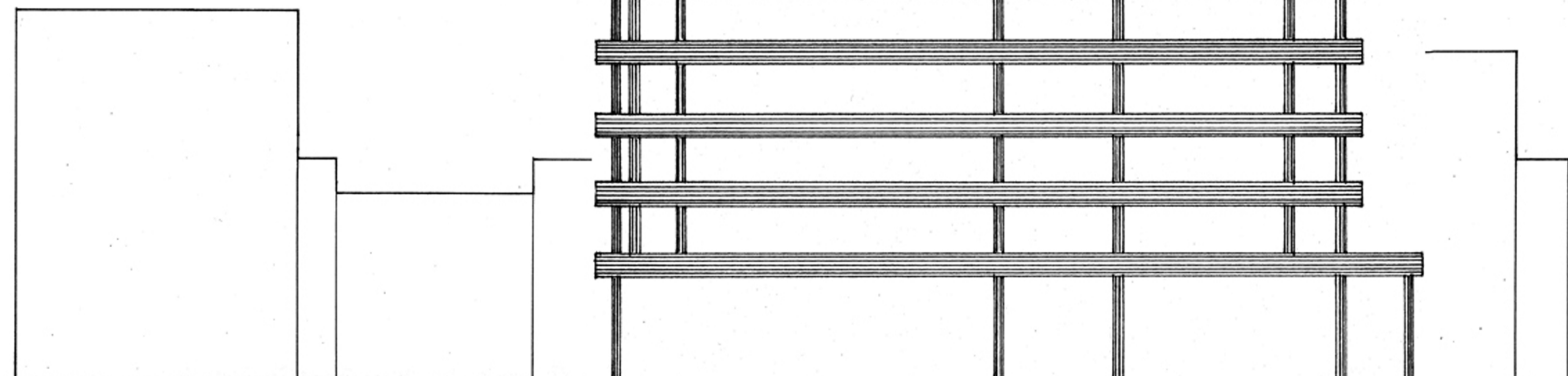
Axonometric: Ground Floor  
1:200



15 0 1 5



Section  
1:200



Elevation  
1:200