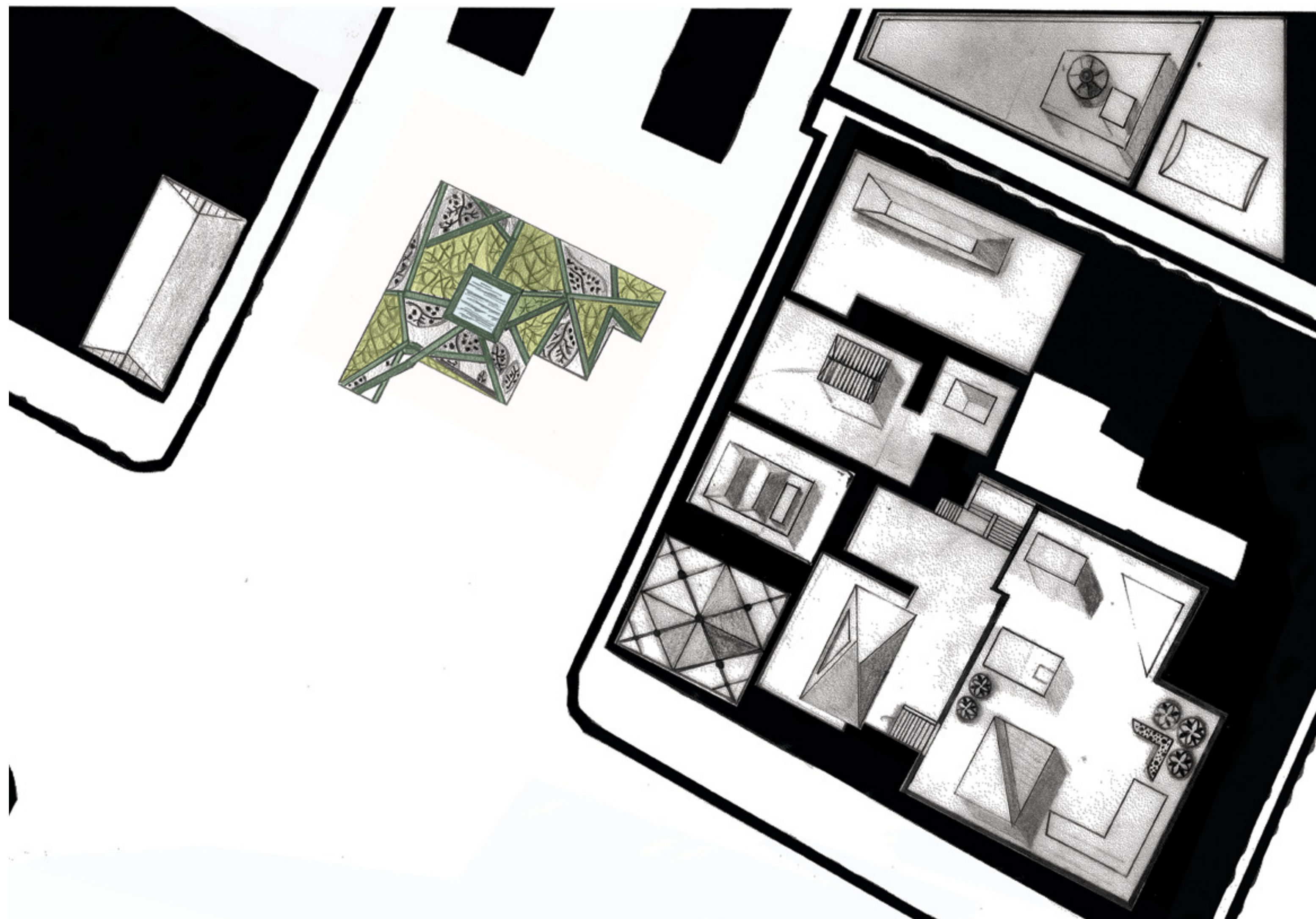
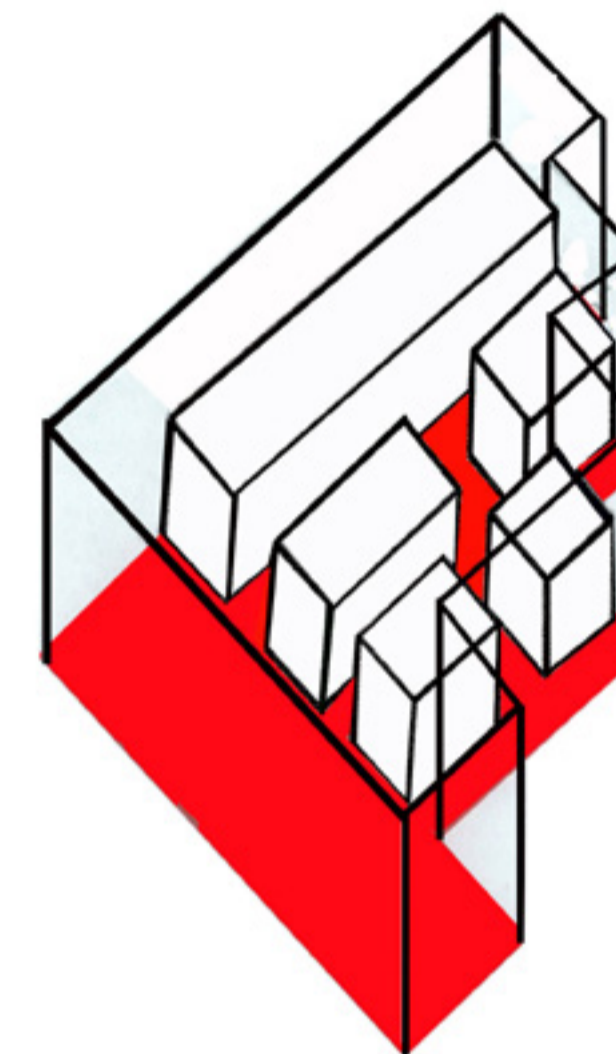
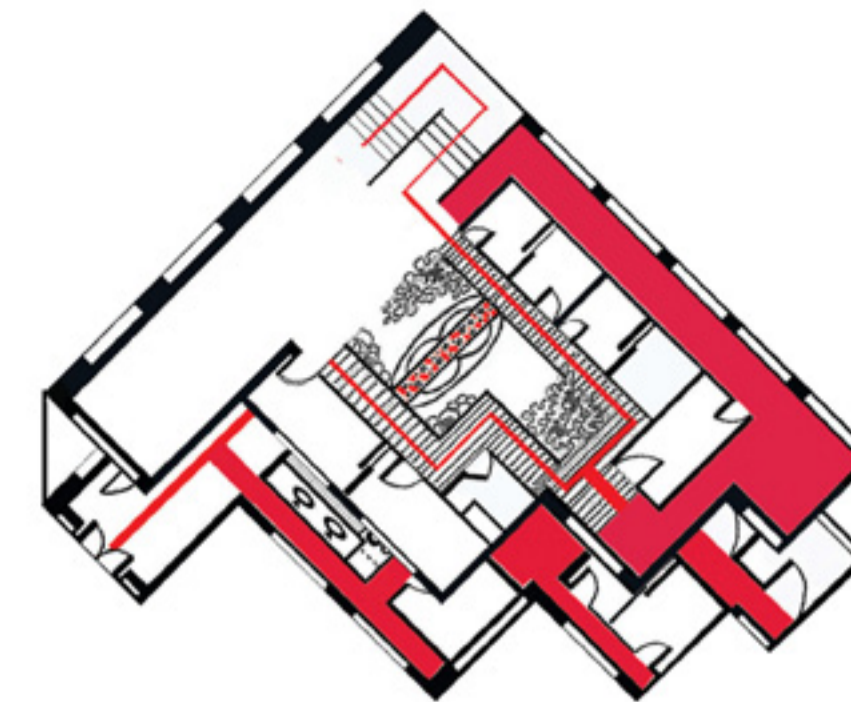


L 14

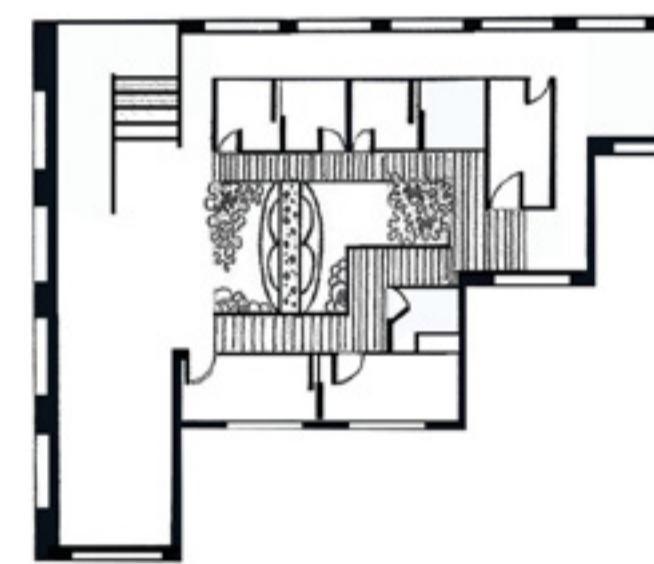
SITE AERIAL VIEW 1: 200



PLANS & AXONOMETRICS



ground floor



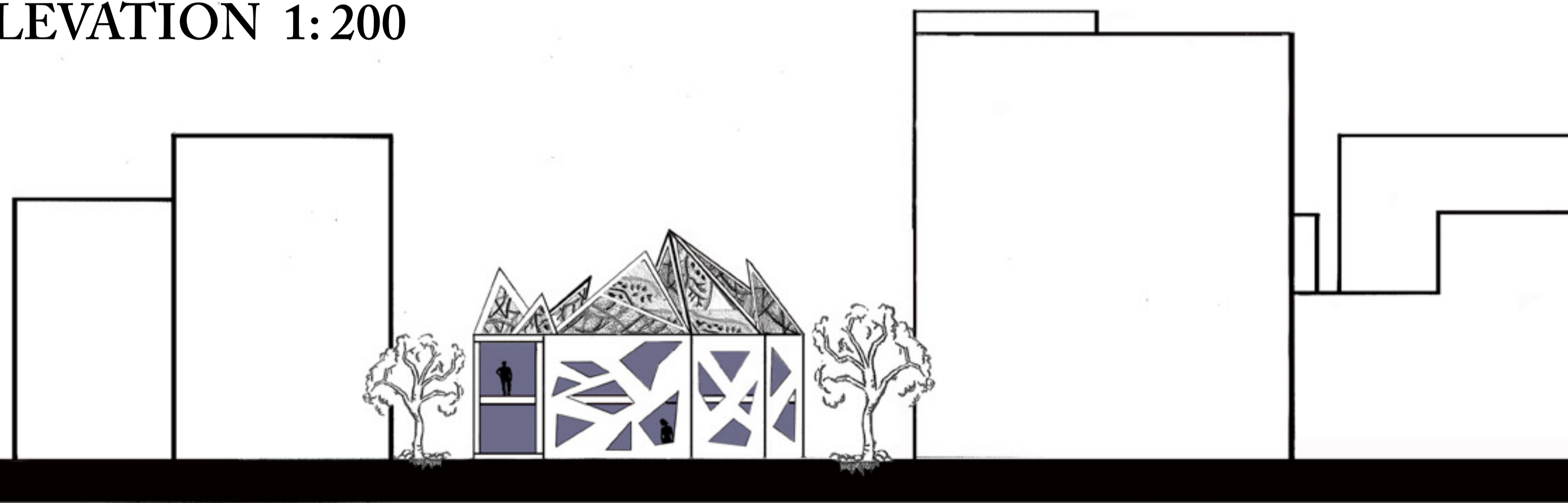
2nd floor



The chashitsu (japanese tea house) refers to a structure designed for holding tea ceremonies. This architectural space was created for aesthetic fulfillment and is a place of momentary serenity from the hectic pace of tokyo life. It is surrounded by a roji (courtyard garden) that prepares the guests for the ceremony and gives the teahouse a certain degree of privacy. Doors and windows are traditional shoji, made out of delicate strips of balsa and translucent paper which allows light to pass into the room, illuminating and visually expanding the spaces. In accordance with ancient japanese architecture, tearooms are generally small and covered in tatami mats with standard dimensions. The nature concept for the windows and steel faceted roof design stems from the intricate pattern of tealeaf veins sprinkled with crystal water droplets that sparkle under sunlight. Each side of the building reveals a different facade to a viewer.

SECTION 1: 200

ELEVATION 1: 200



Kay Soon Xiuyi  
310079543  
BDES 1020  
ARCHITECTURE STUDIO 102