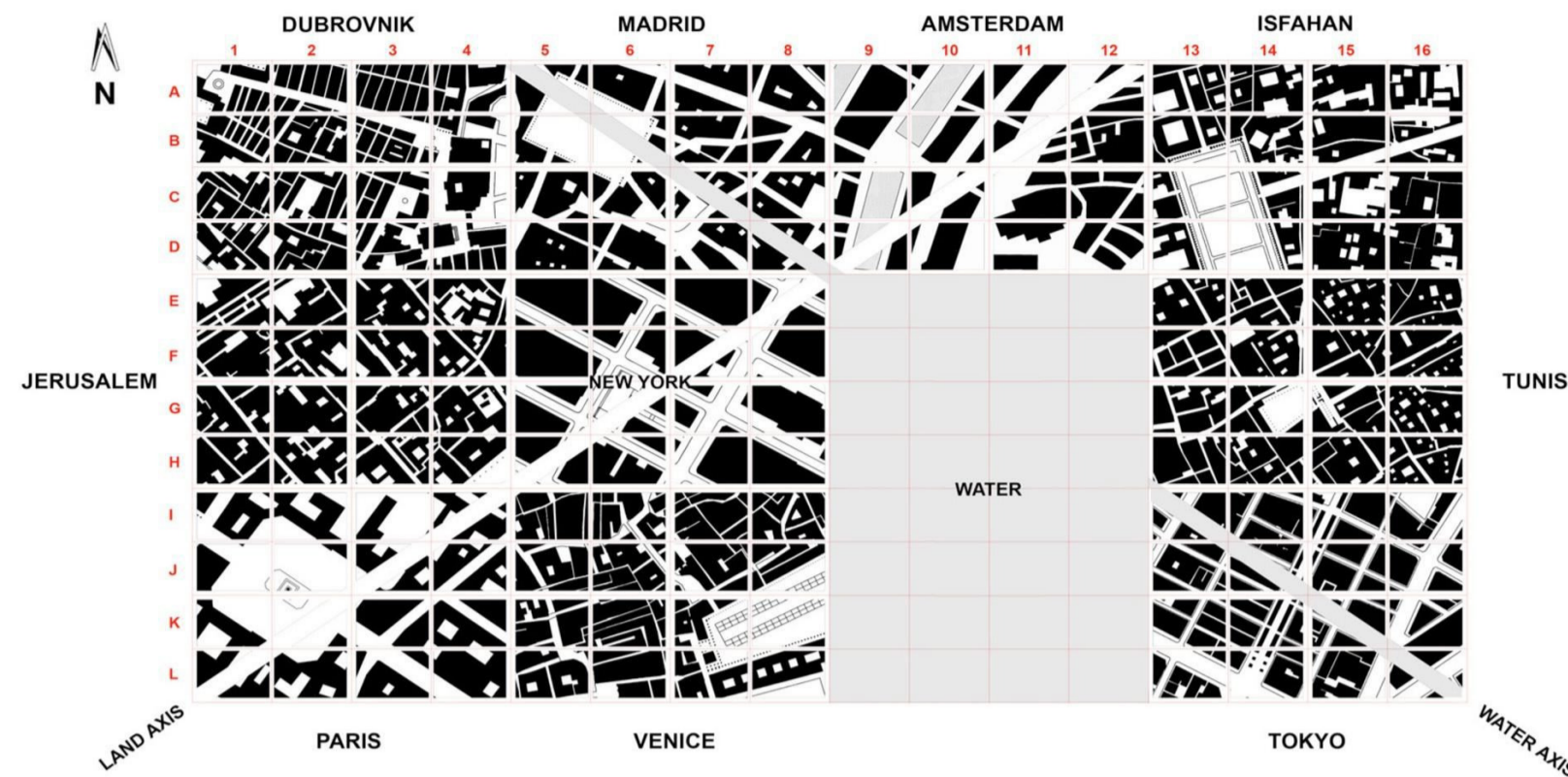
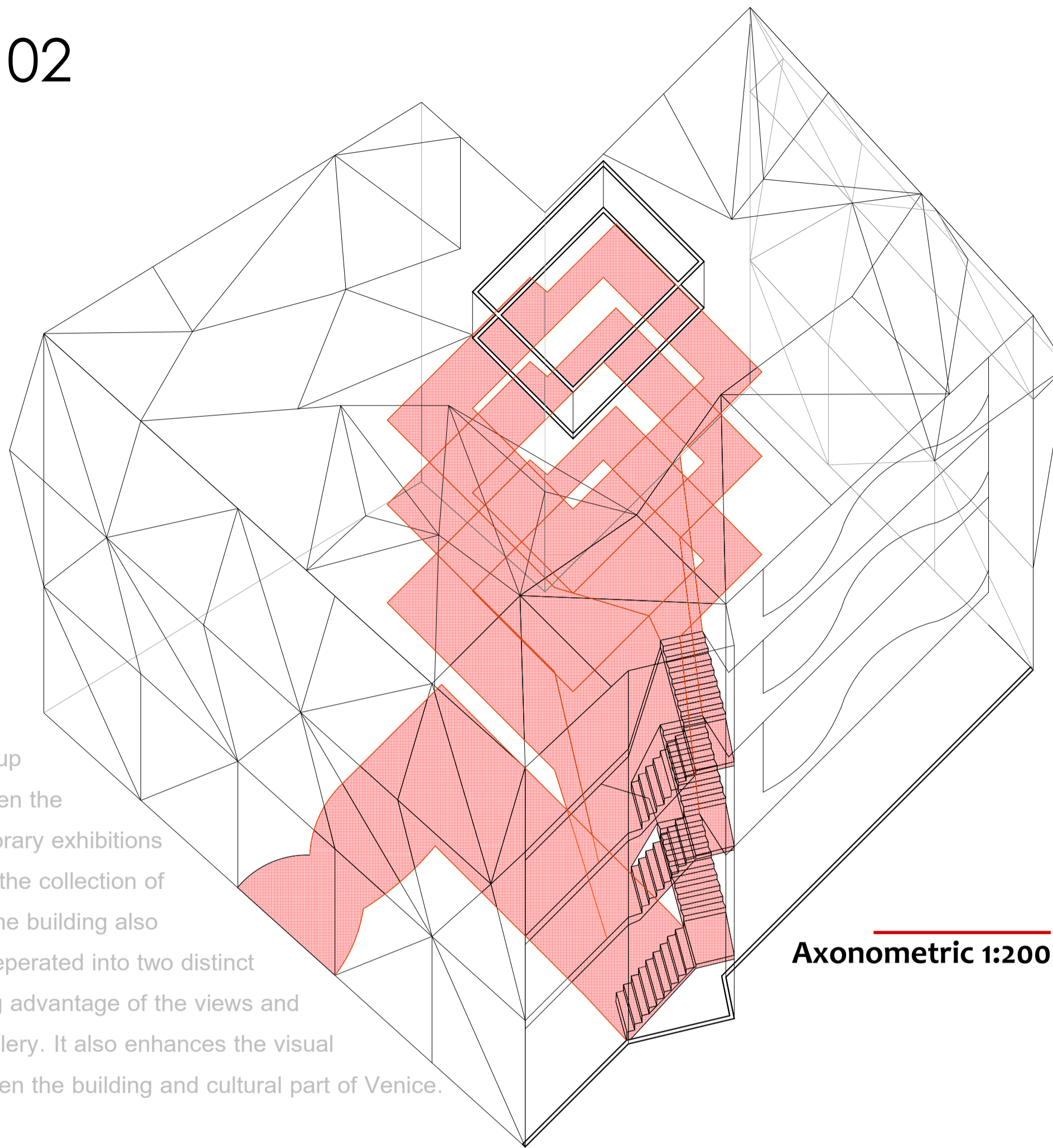


BDES1020 ARCHITECTURE STUDIO 102

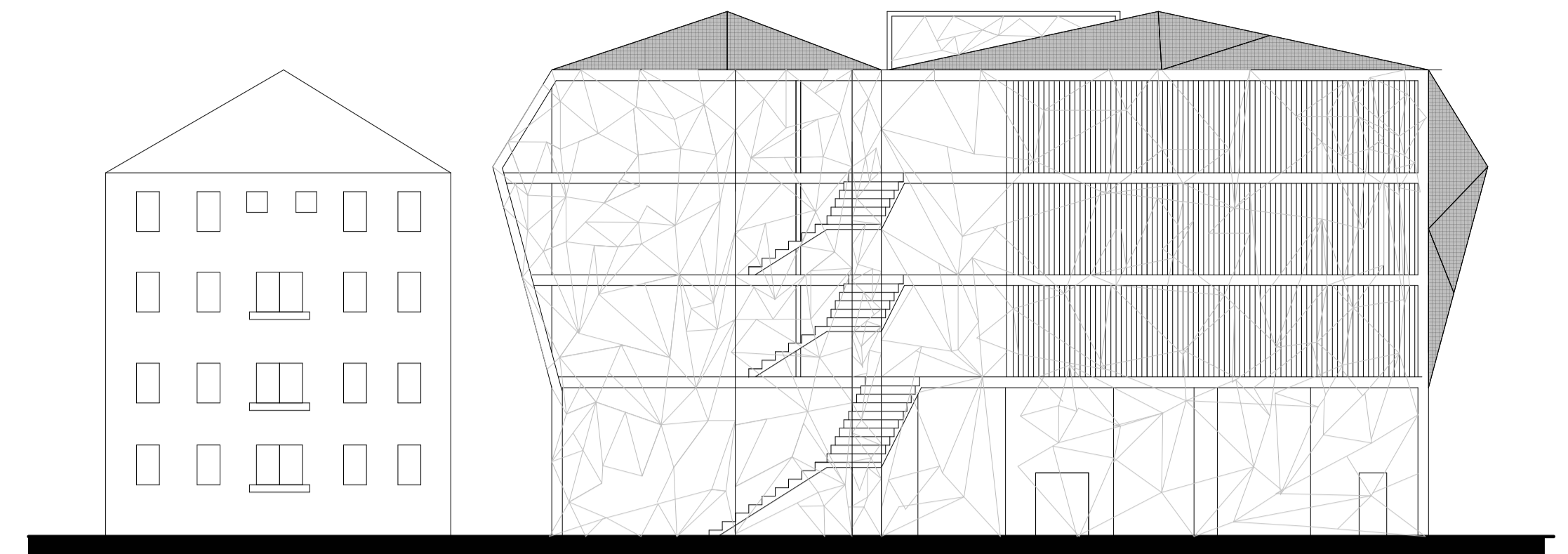
AH RA LEE 310257948 **K5**



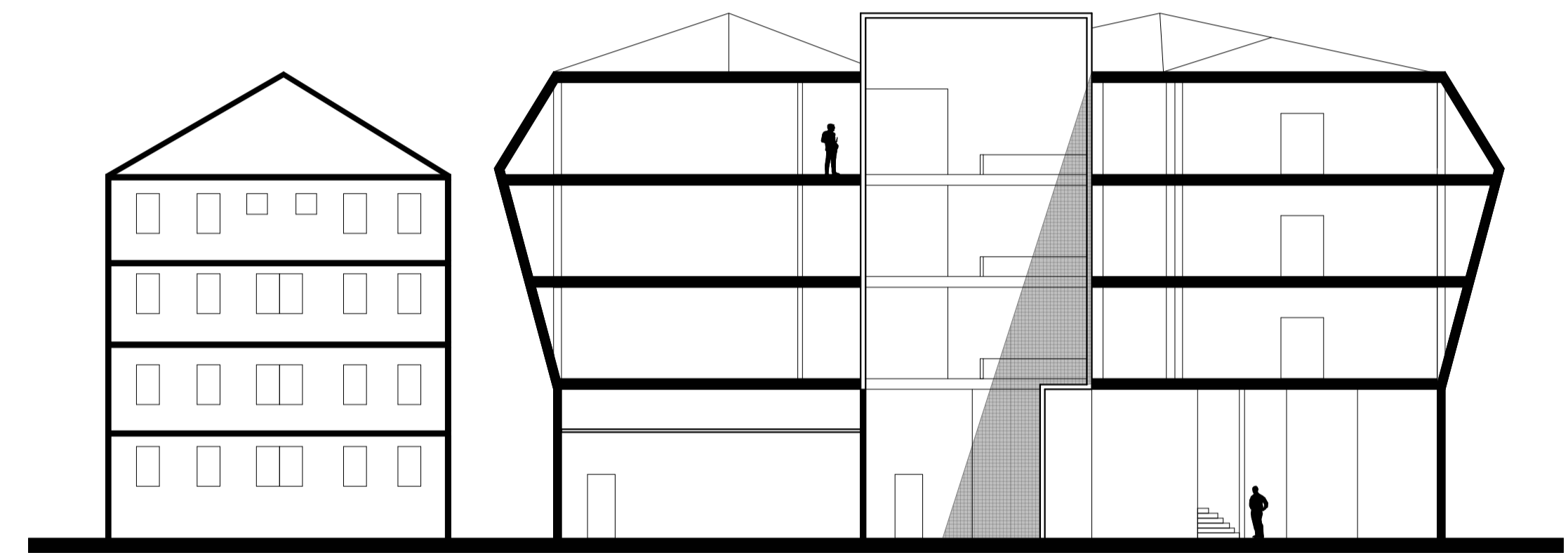
Famous world-wide as one of Italy's most beautiful cities, Venice's image is strongly bound up with the treasures of antique art and the splendours of her past. In recent years the city has seen the arrival of numerous new exhibition spaces for contemporary art : museums, art galleries, temporary exhibitions and private collections. Thus the program of the building is a contemporary art gallery. It holds the collection of contemporary art works and exhibits a wide range of artists, local national and international. The building also comprises temporary exhibitions, a cafe, a shop and educational spaces. The building itself is separated into two distinct building parts reflecting the public and gallery spaces. Large glass facade is facing the canal taking advantage of the views and natural lightings. Therefore it is spacious, open and inviting and enables easy access to the gallery. It also enhances the visual connections between the canal and the gallery's interior, thus optimising the relationship between the building and cultural part of Venice.



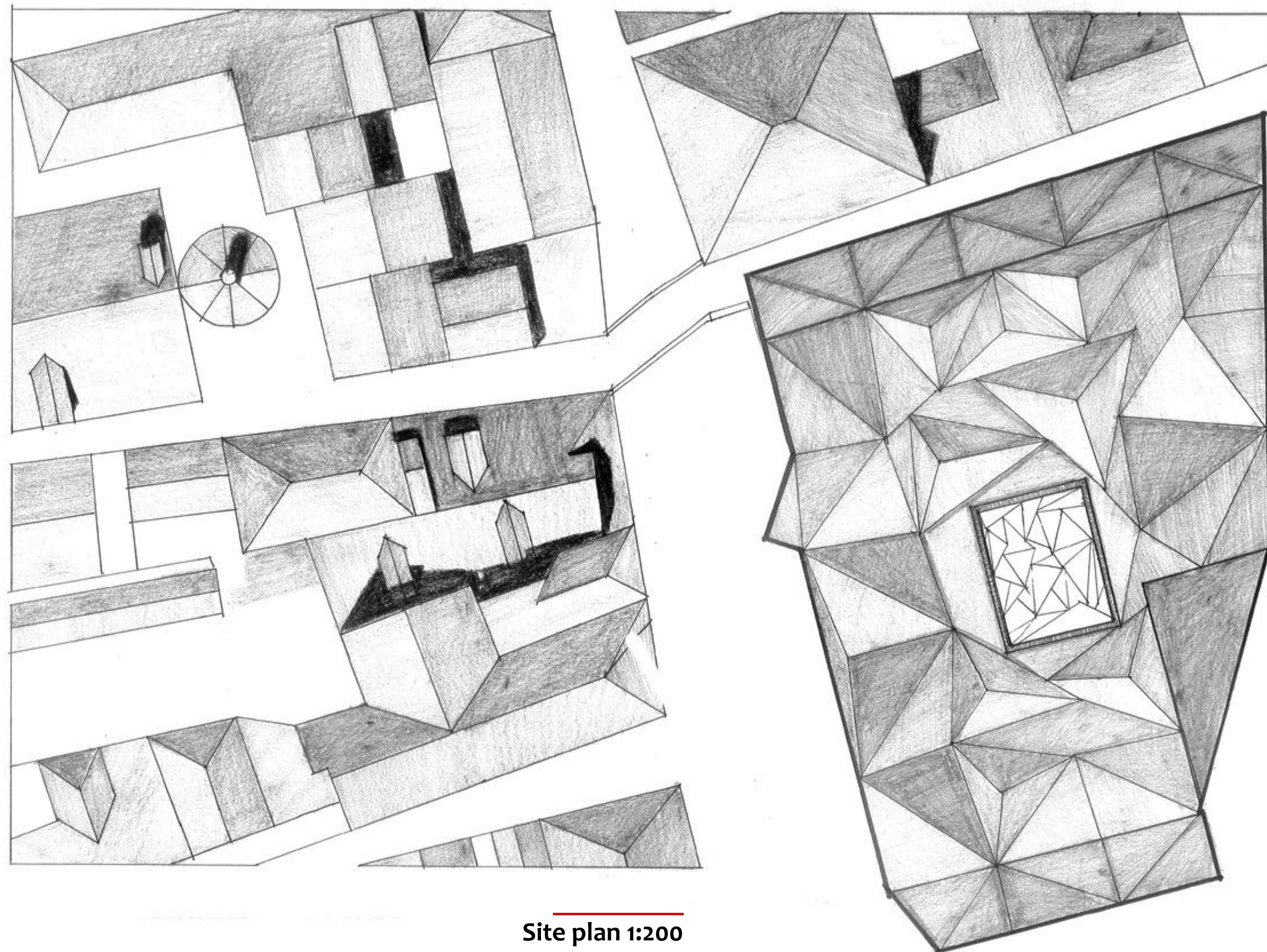
Axonometric 1:200



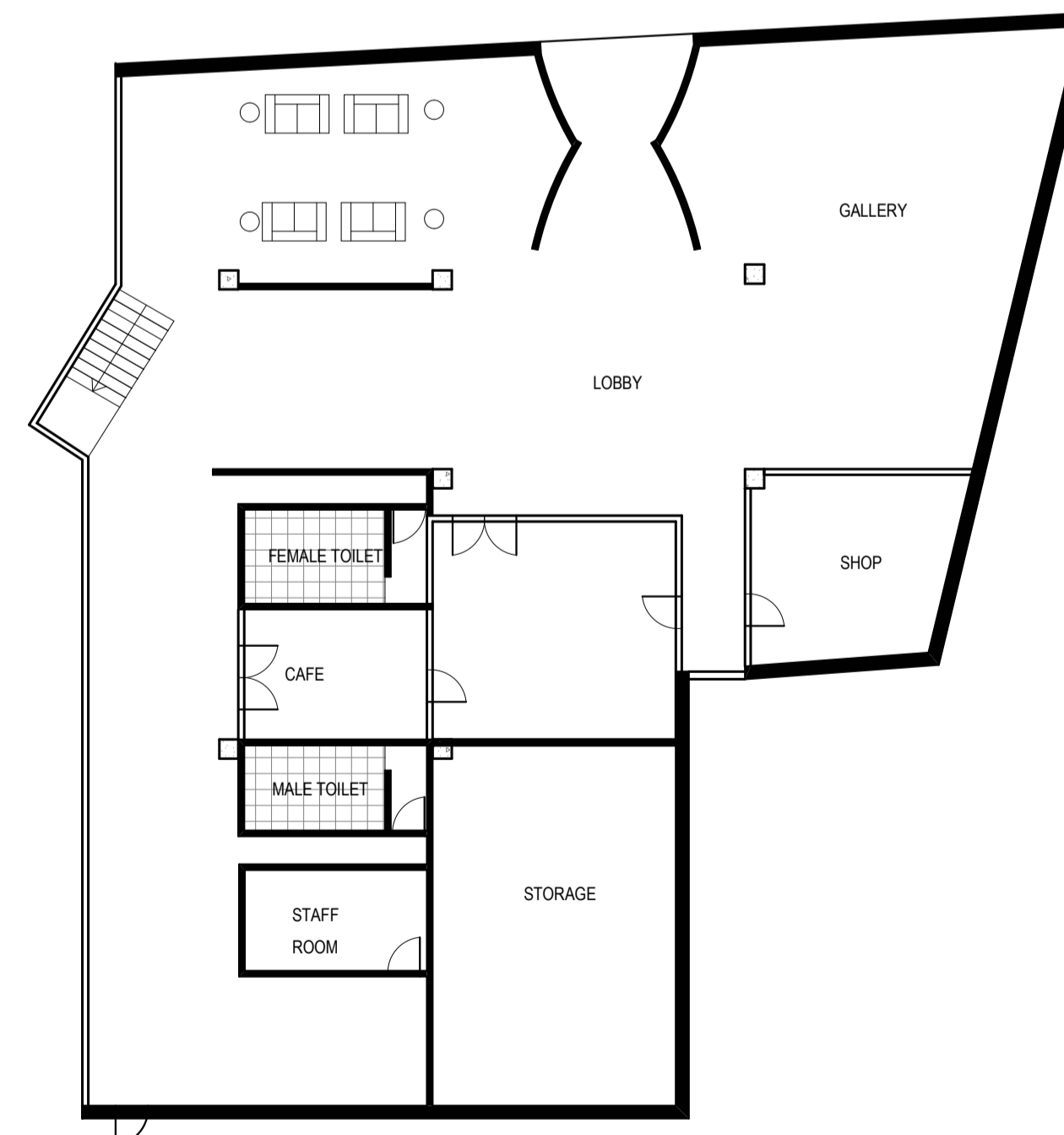
Elevation 1:200



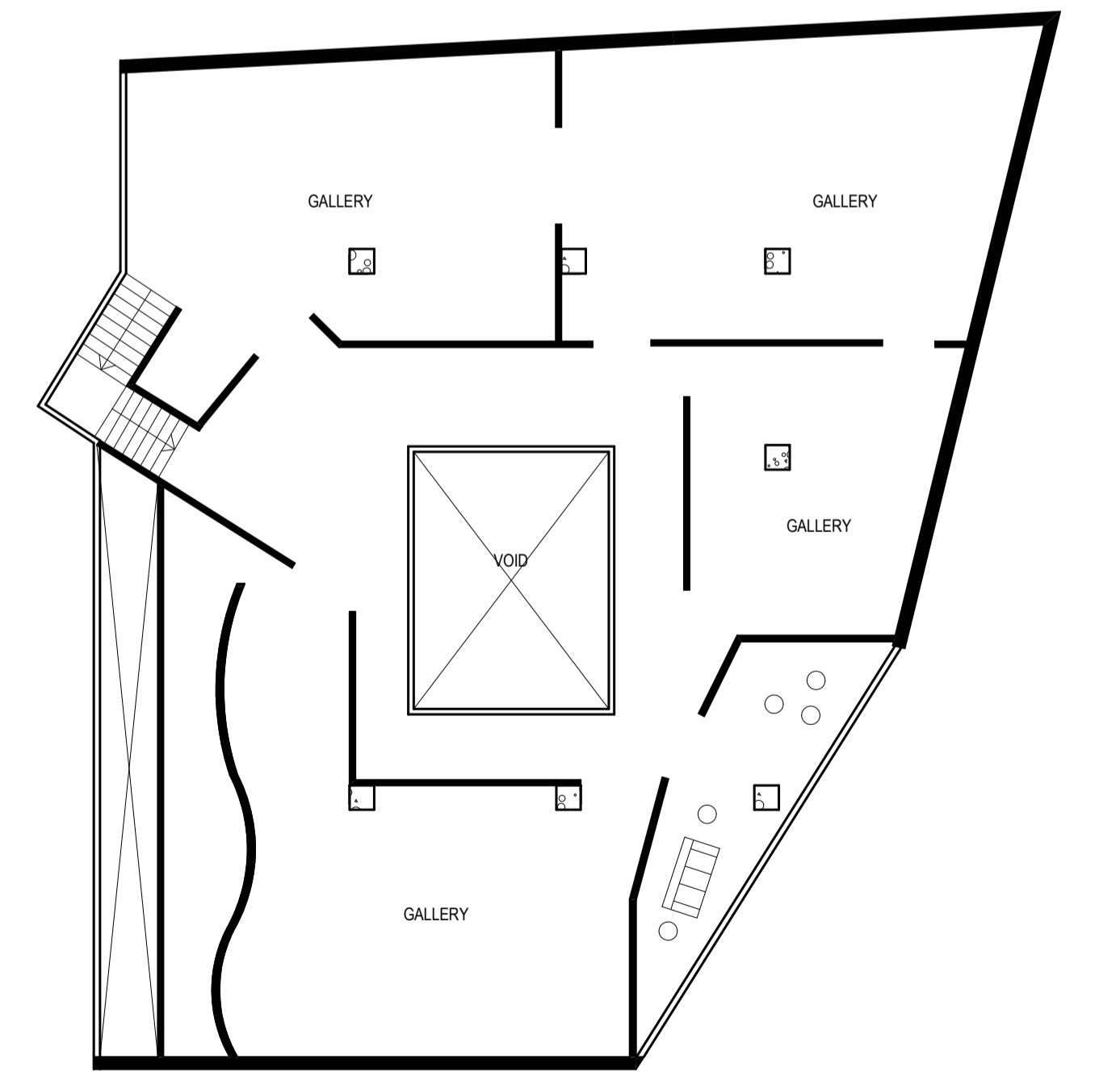
Section 1:200



Site plan 1:200



Ground Floor Plan 1:200



First Floor Plan 1:200