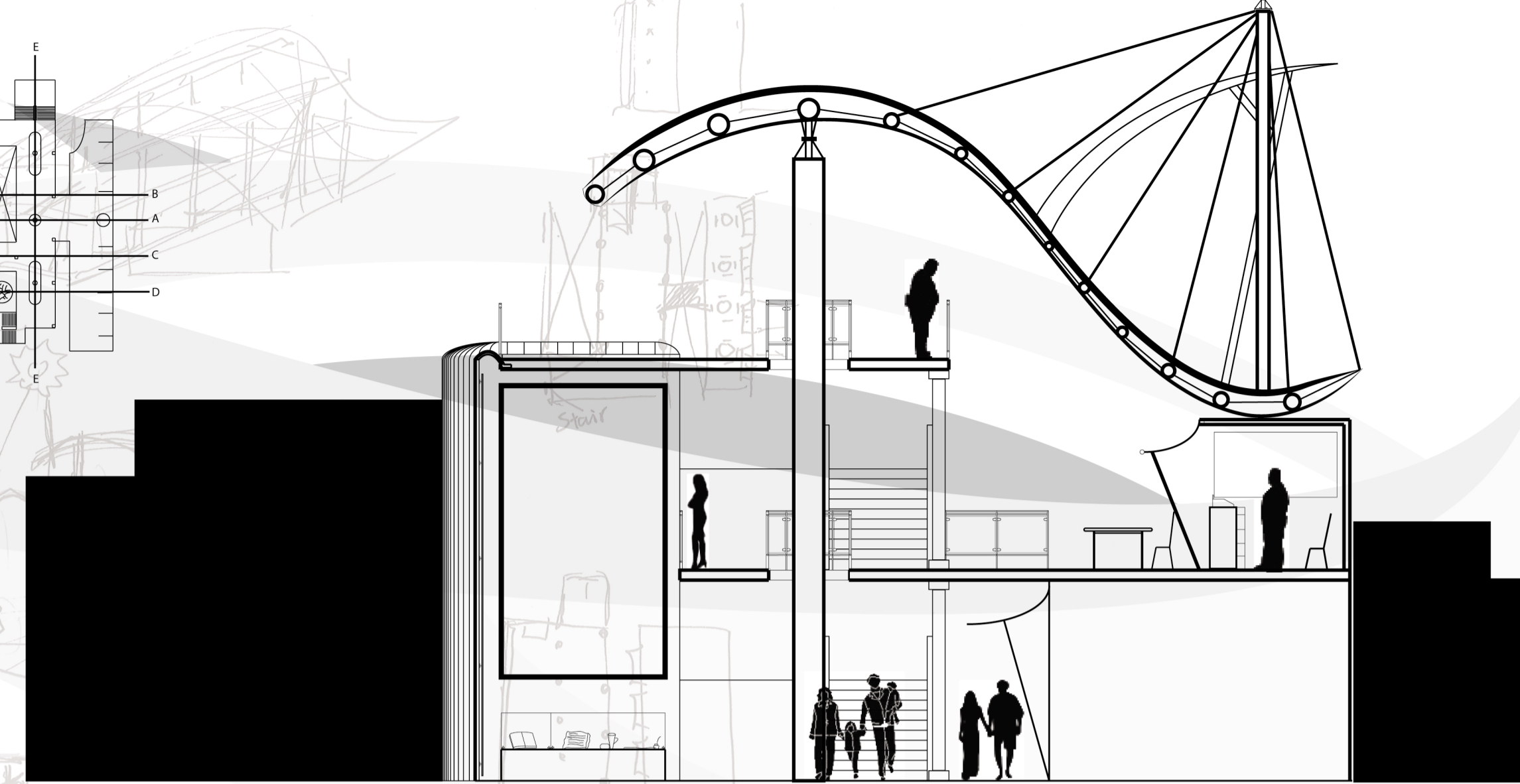
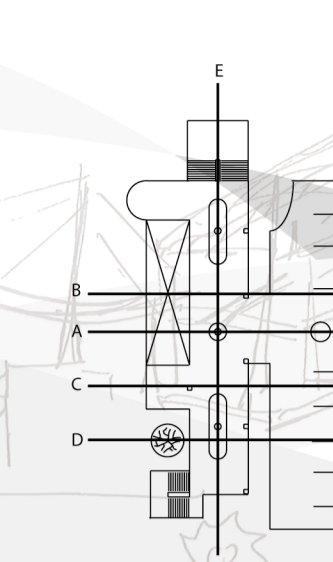
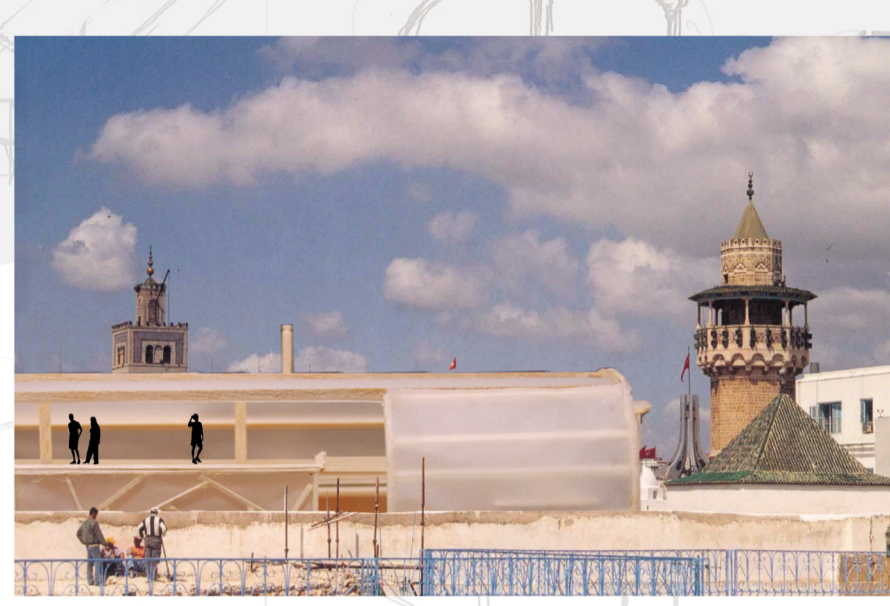
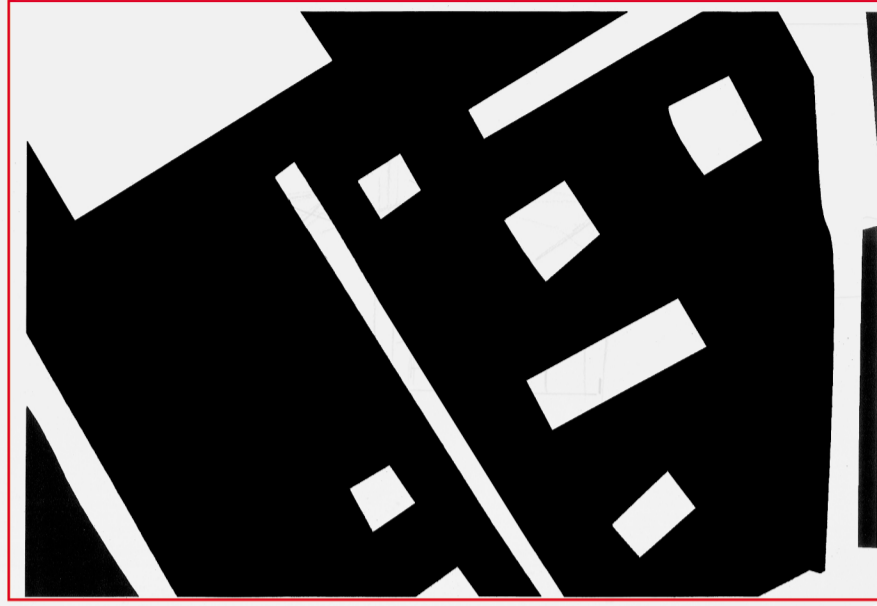
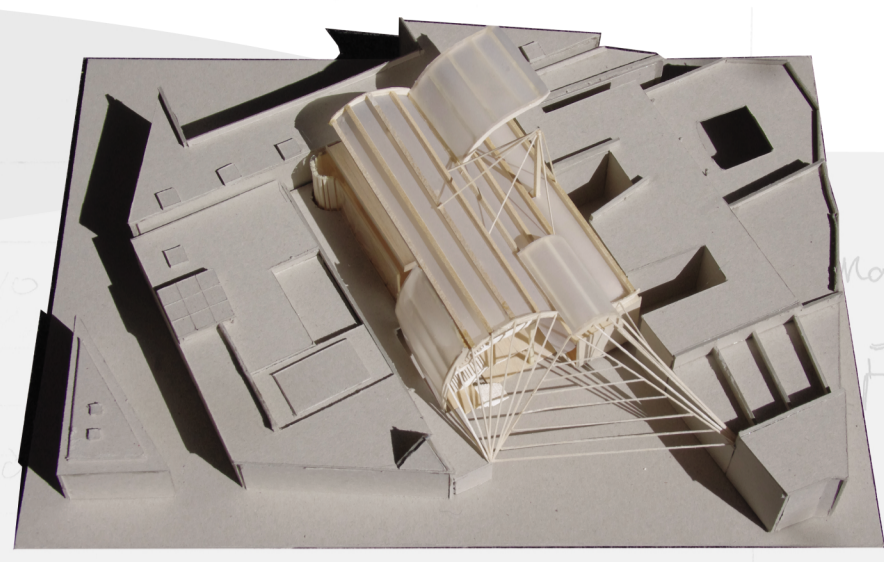
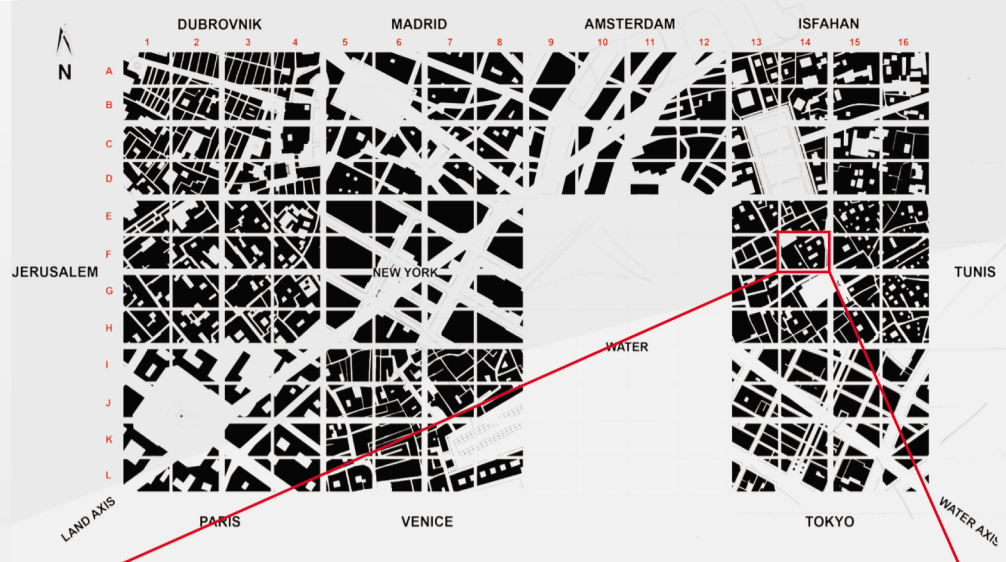
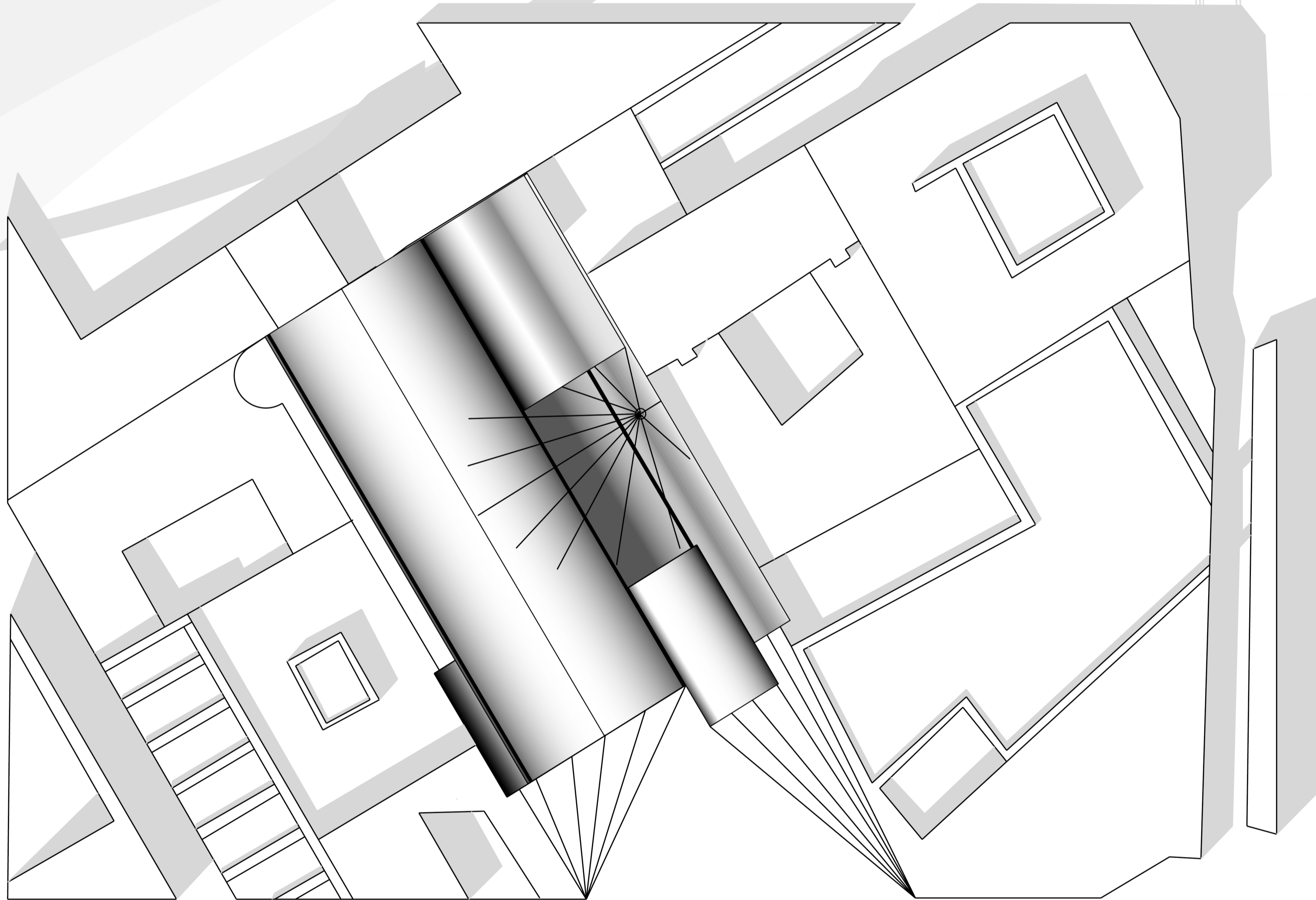


arcade de la médina



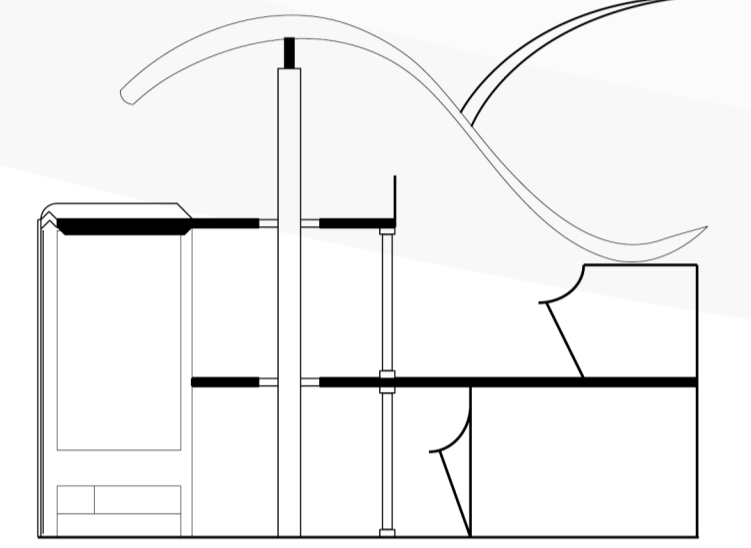
1:100 section A-A



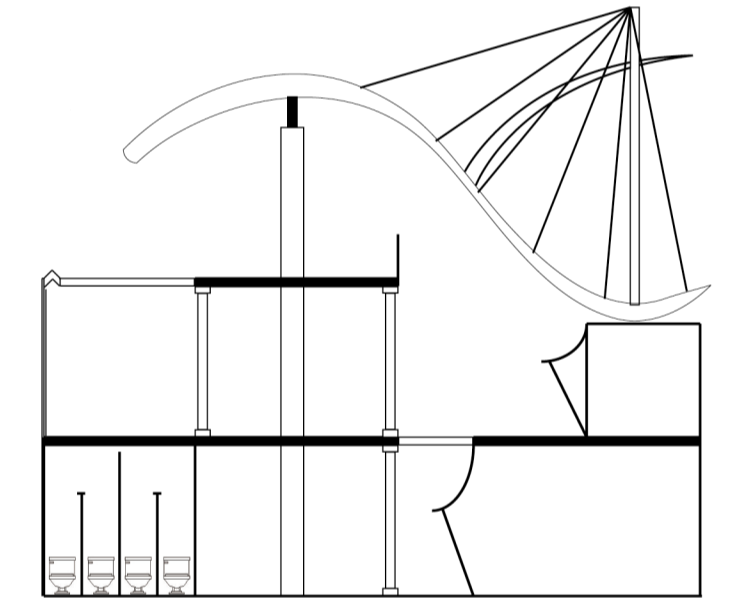
1:200 SITE PLAN

The Arcade de la Medina sits in the centre of world heritage site, Medina, Tunis. Three famous tourist attractions: The Zaytouna Mosque, Zaouia Sidi Ben Arous and Mausoleum Hammouda Pacha lined up along the axis of the arcade, and to its left and right are the other 2 mosques and the Tower of President, all of these above make this arcade an extremely important linkage that connect the attraction sites together and also lead the tourists toward both directions. The arcade preserves the typology and format of the traditional souk but built in contemporary material and forms. It consists a tourist information centre, cafe, merchandise shops, an exhibition area, an open market space and a roof top tea garden where the tourist are able to lookout into the city.

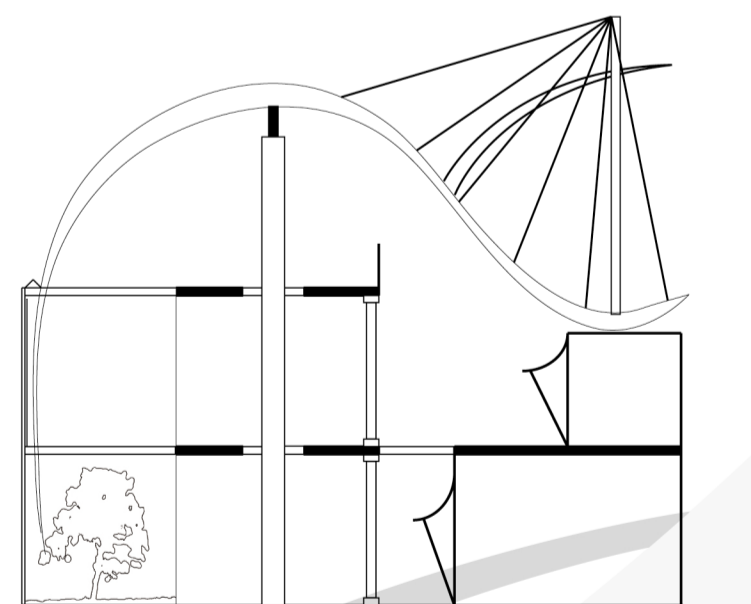
The wave-shape glass roof matches the vast Mediterranean Sea, which locates on the eastside of the city, creates a strong contrast against the traditional sand-stone buildings.



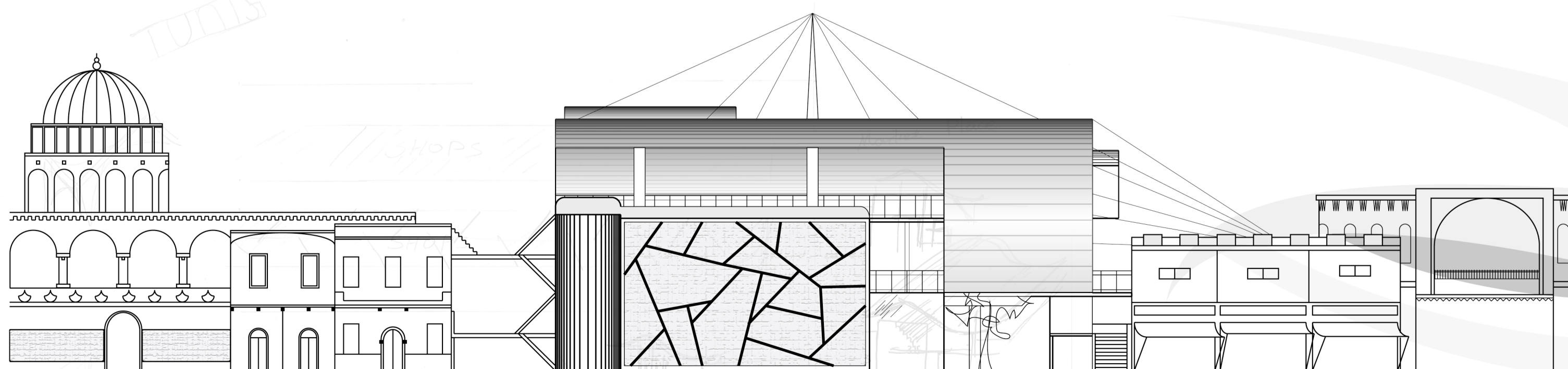
1:200 section B-B



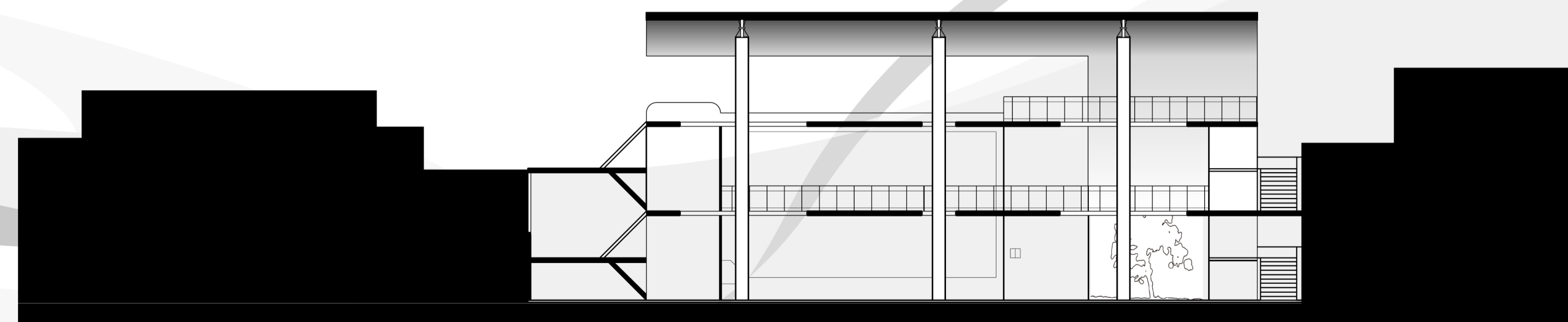
section C-C



section D-D



1:200 ELEVATION



section E-E