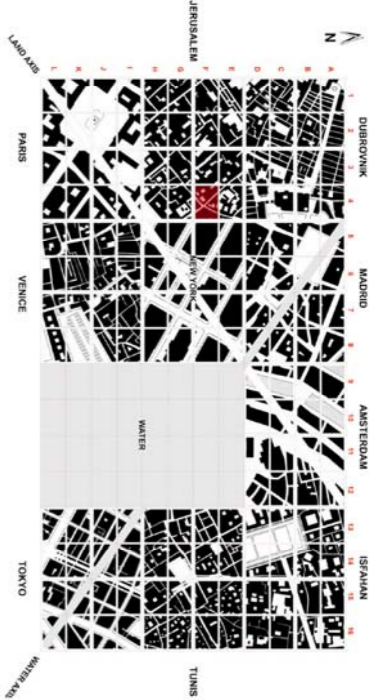


SPS (Salam Peace Shalom)



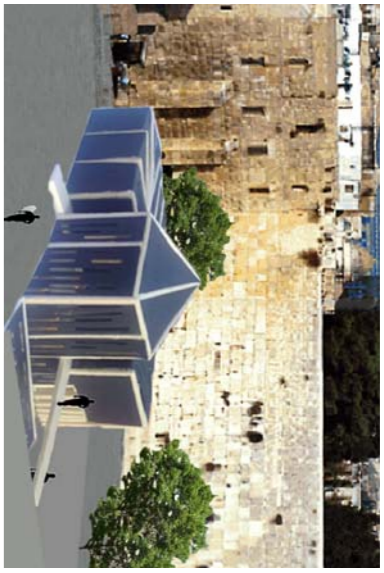
LOCATION PLAN (F4)
SCALE 1:10000



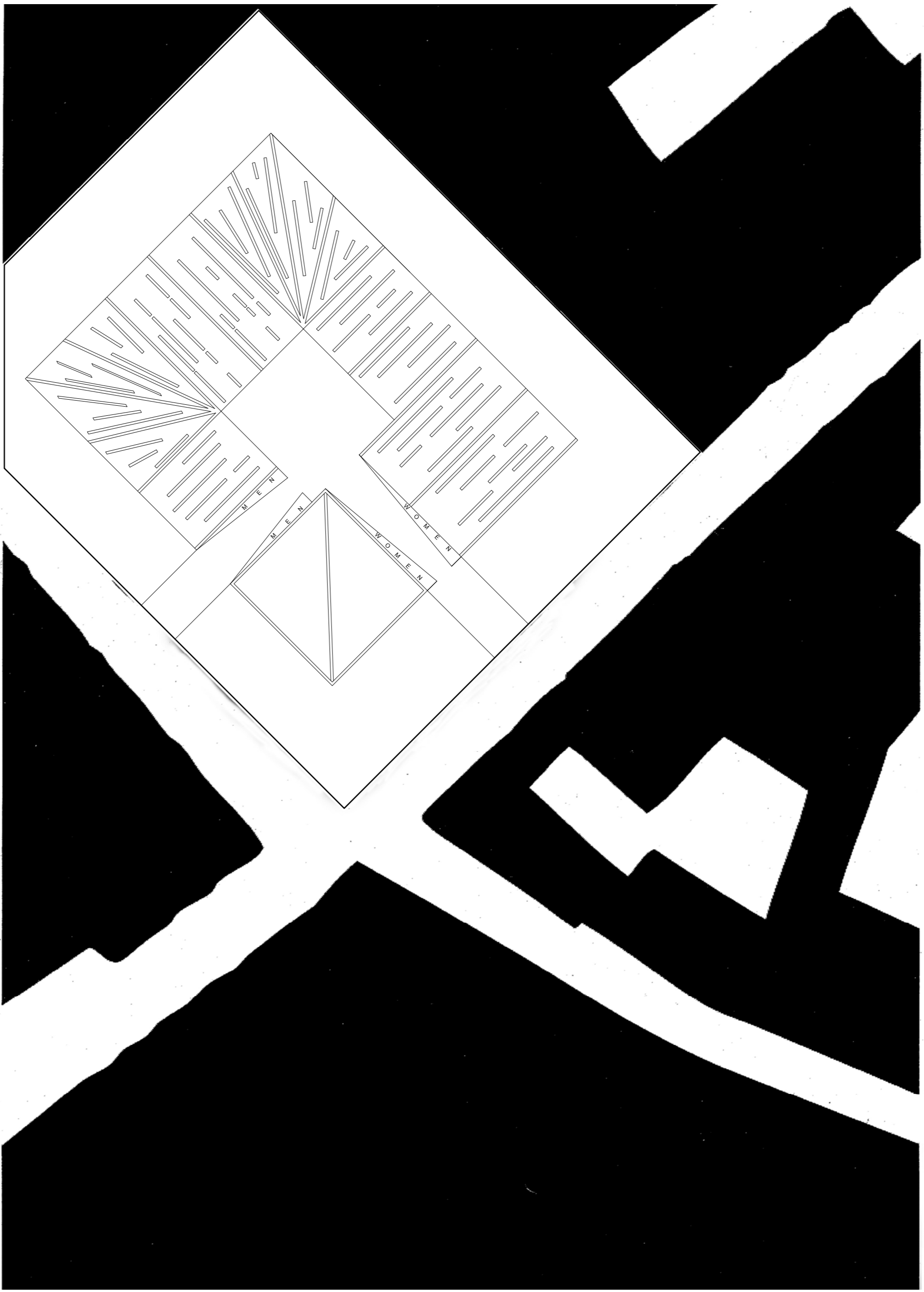
PHOTOMONTAGE 1
SCALE NTS



PHOTOMONTAGE 2
SCALE NTS



PHOTOMONTAGE 3
SCALE NTS

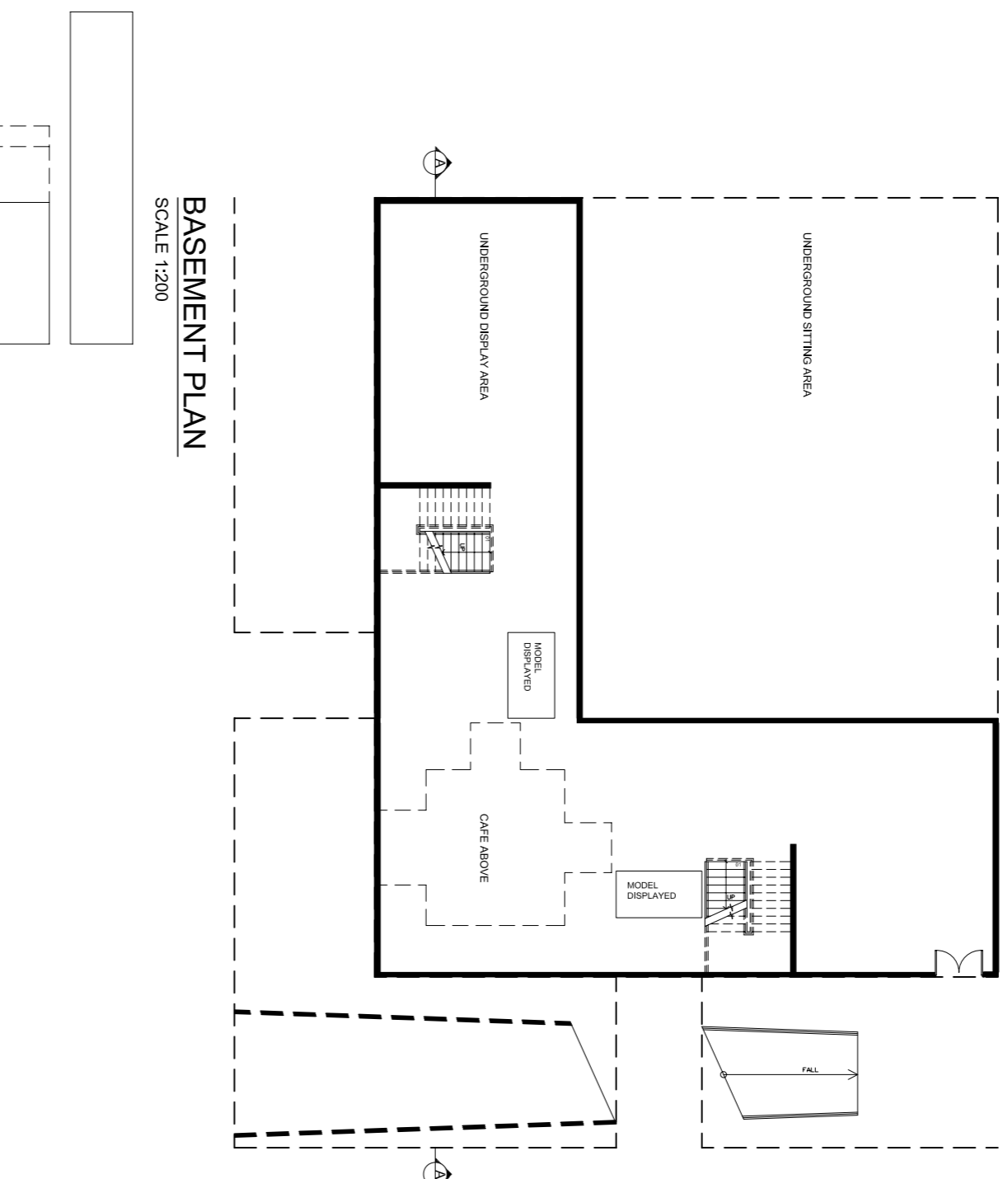


AERIAL PLAN
SCALE 1:200

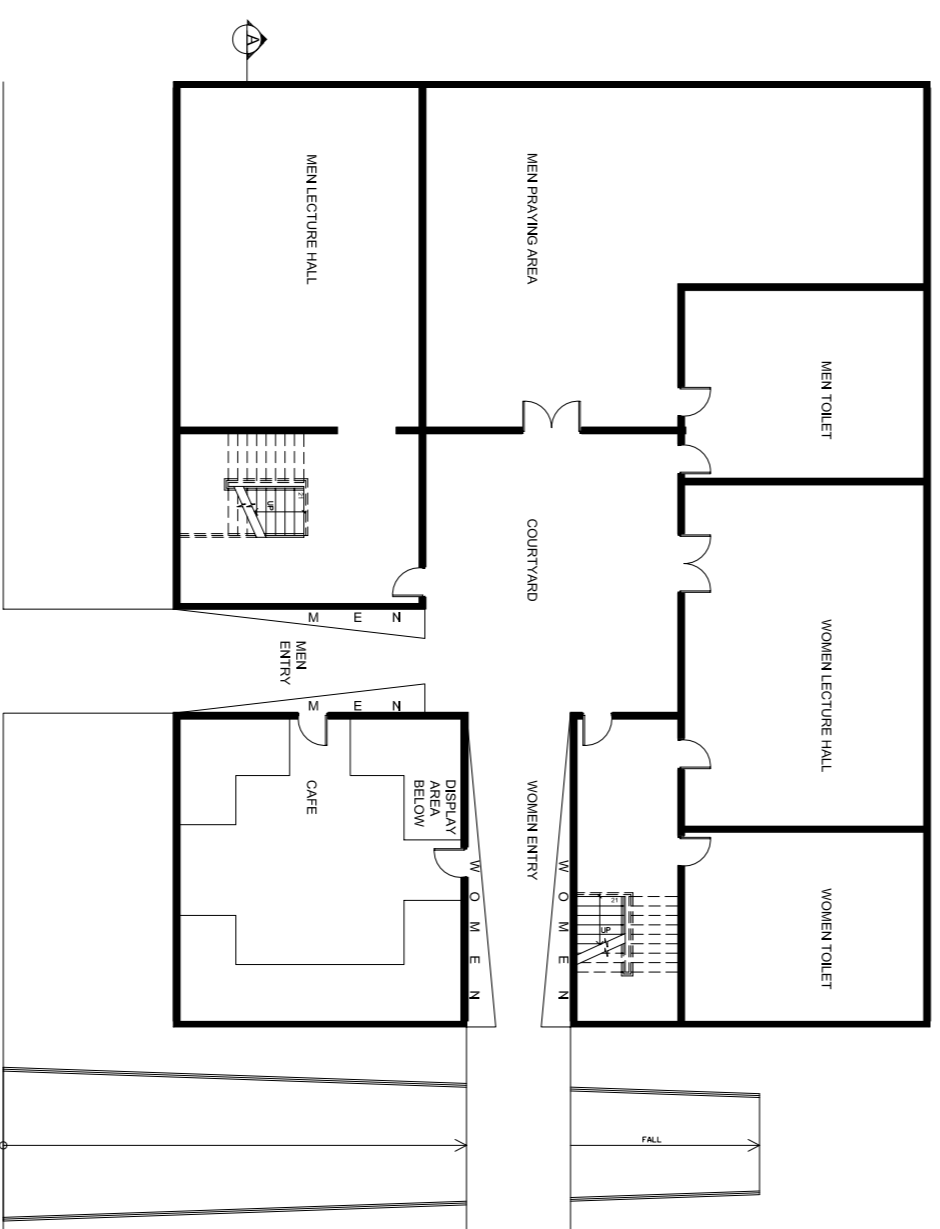
SPS (Salam Peace Shalom) is a multi-functional building, consisting of a prayer hall, offices, lecture rooms, a display area and CAFÉ to unite people from all over Jerusalem. SPS is divided into two main areas; public (genders mix) and private (genders separate). The cladding is the key point to achieve the private vs. public idea, where the walls of the public are see-through; whilst the roof is solid and vice versa in terms of the private spaces. The private spaces have a simple geometric form of skylight; this is intentionally achieved to permit rays of sunlight to enter SPS giving the sense of hope, peace and a serene atmosphere. The black solid walls however, demonstrate the war outside, implementing politics into architecture. However the internal white insulated cooling walls allow the individual to have a sense of privacy, purity and peace. In comparison, the transparent walls of the public space allow entry of light, and make it easier for people to see.

There are two separate entries for each gender, leading to the central courtyard which is the controlling point of circulation. The ramp however, is shared by both genders as it leads to a public space i.e. display area. The display area is the focal point of SPS; this is achieved by manipulating the height and shape of the roof.

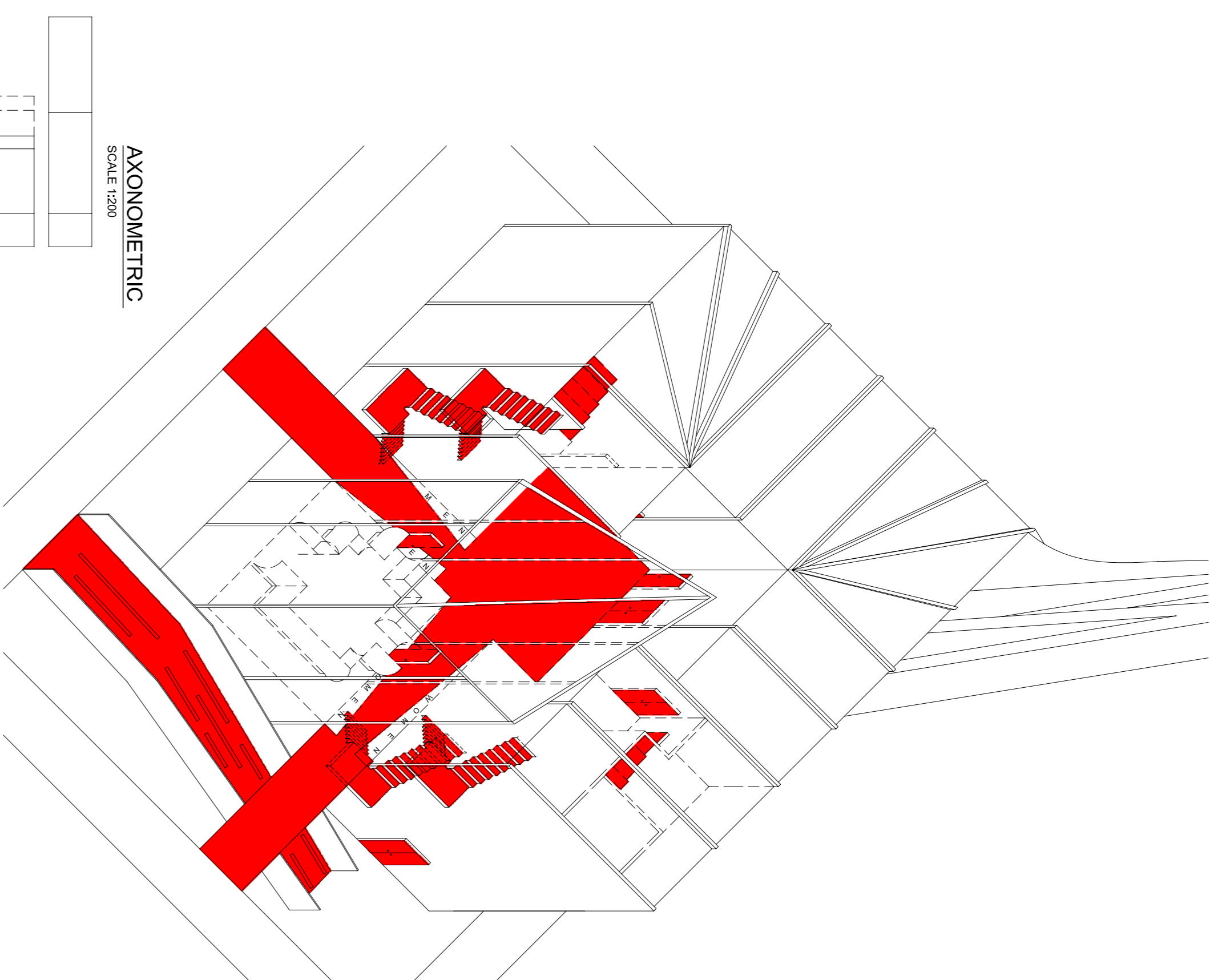
Overall, SPS gives the luxury of Peace, Salam and Shalom.



BASEMENT PLAN
SCALE 1:200



GROUND FLOOR PLAN
SCALE 1:200



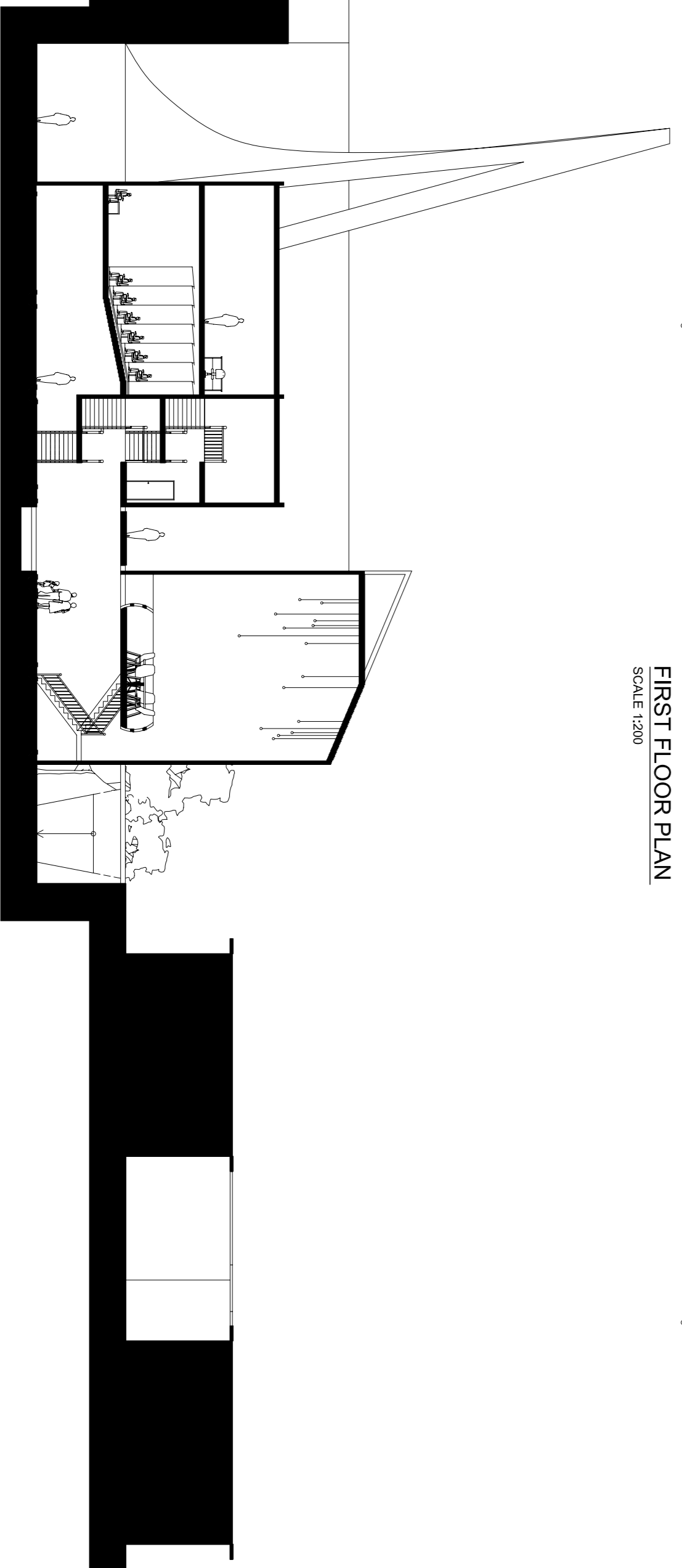
AXONOMETRIC
SCALE 1:200



FIRST FLOOR PLAN
SCALE 1:200



ELEVATION
SCALE 1:200



SECTION A-A
SCALE 1:200