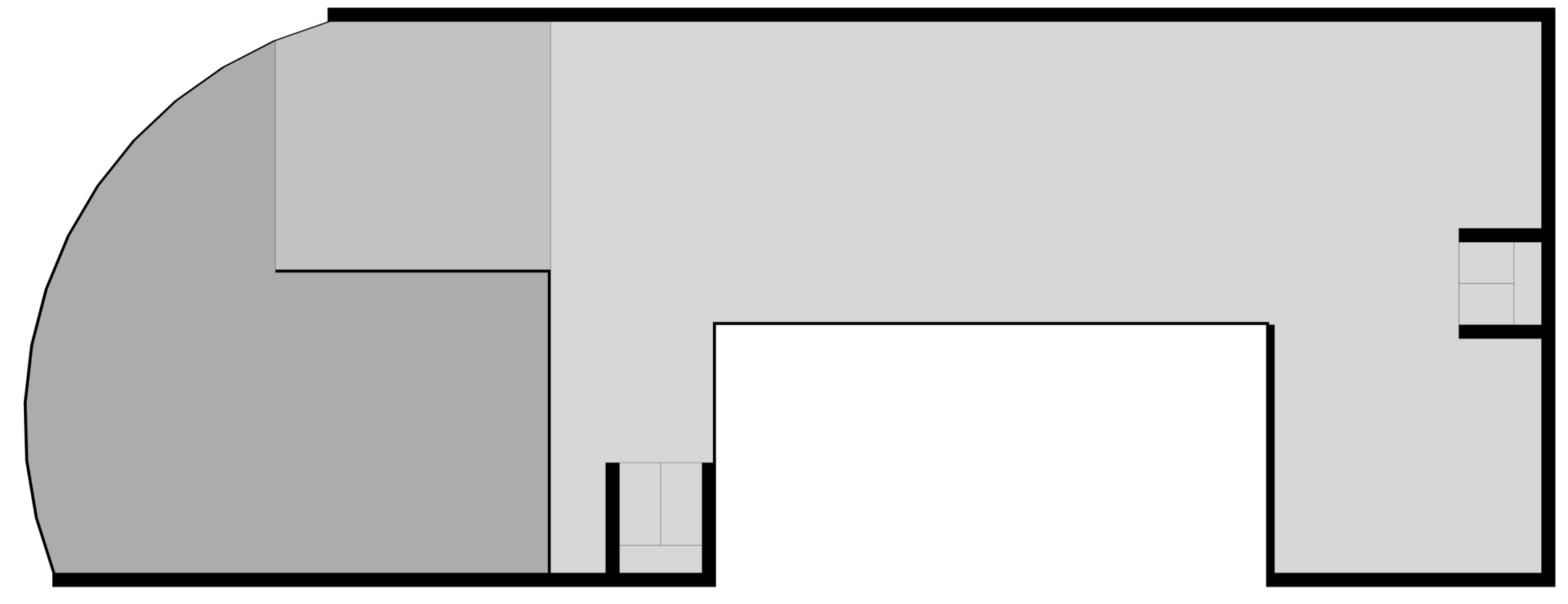
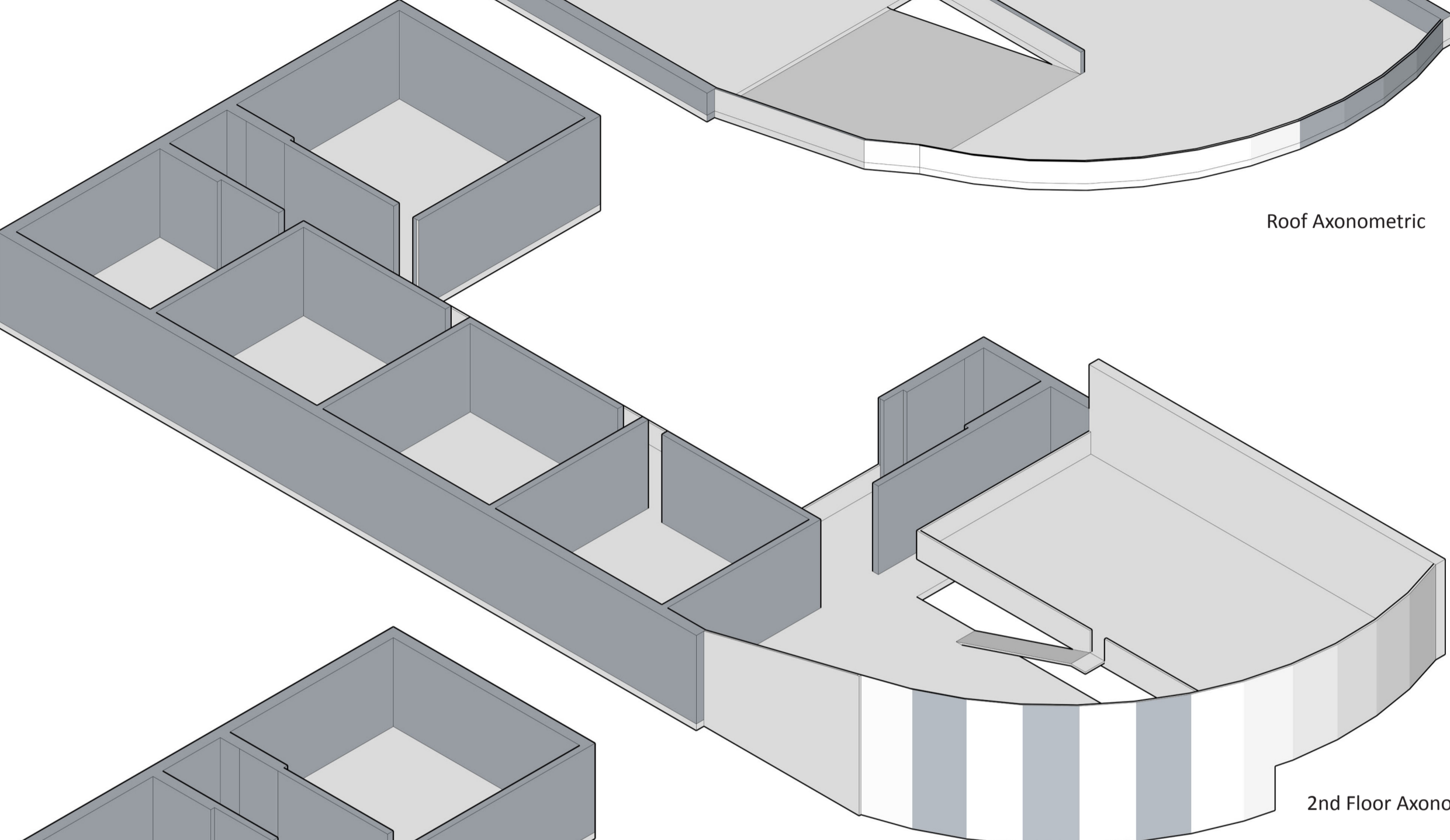


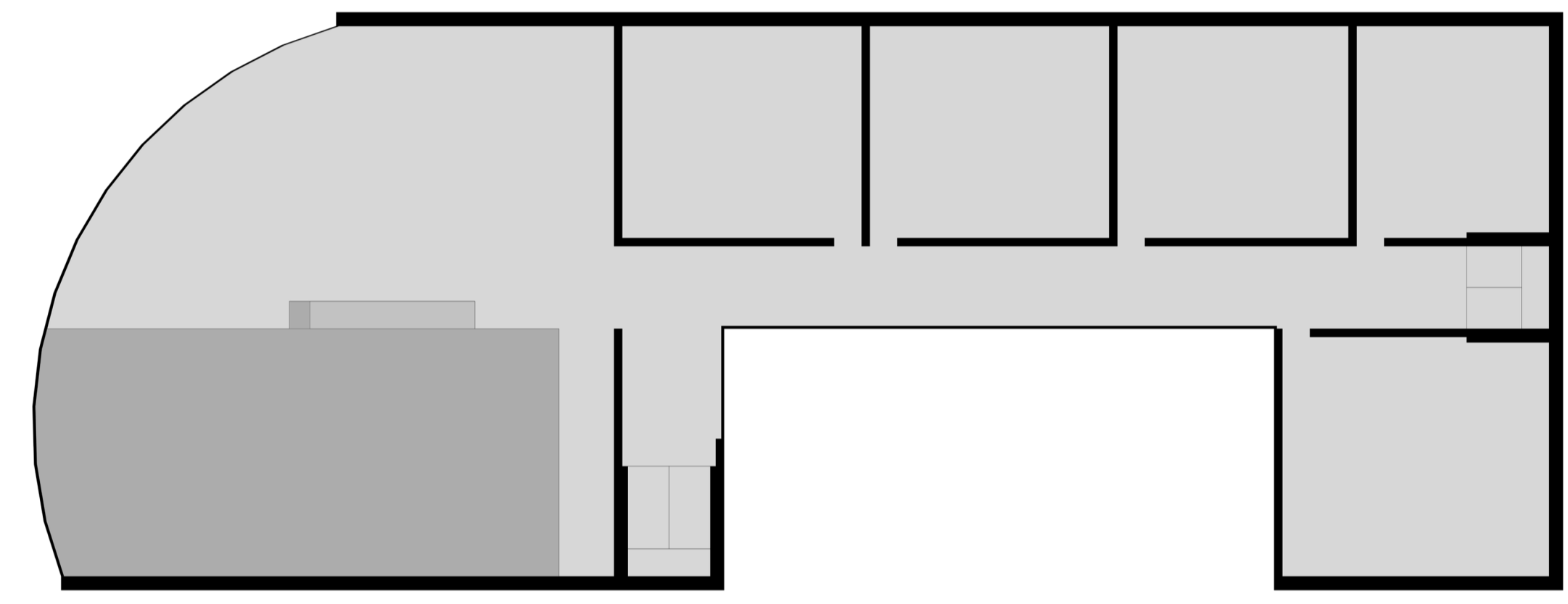
Roof Axonometric scale 1:200



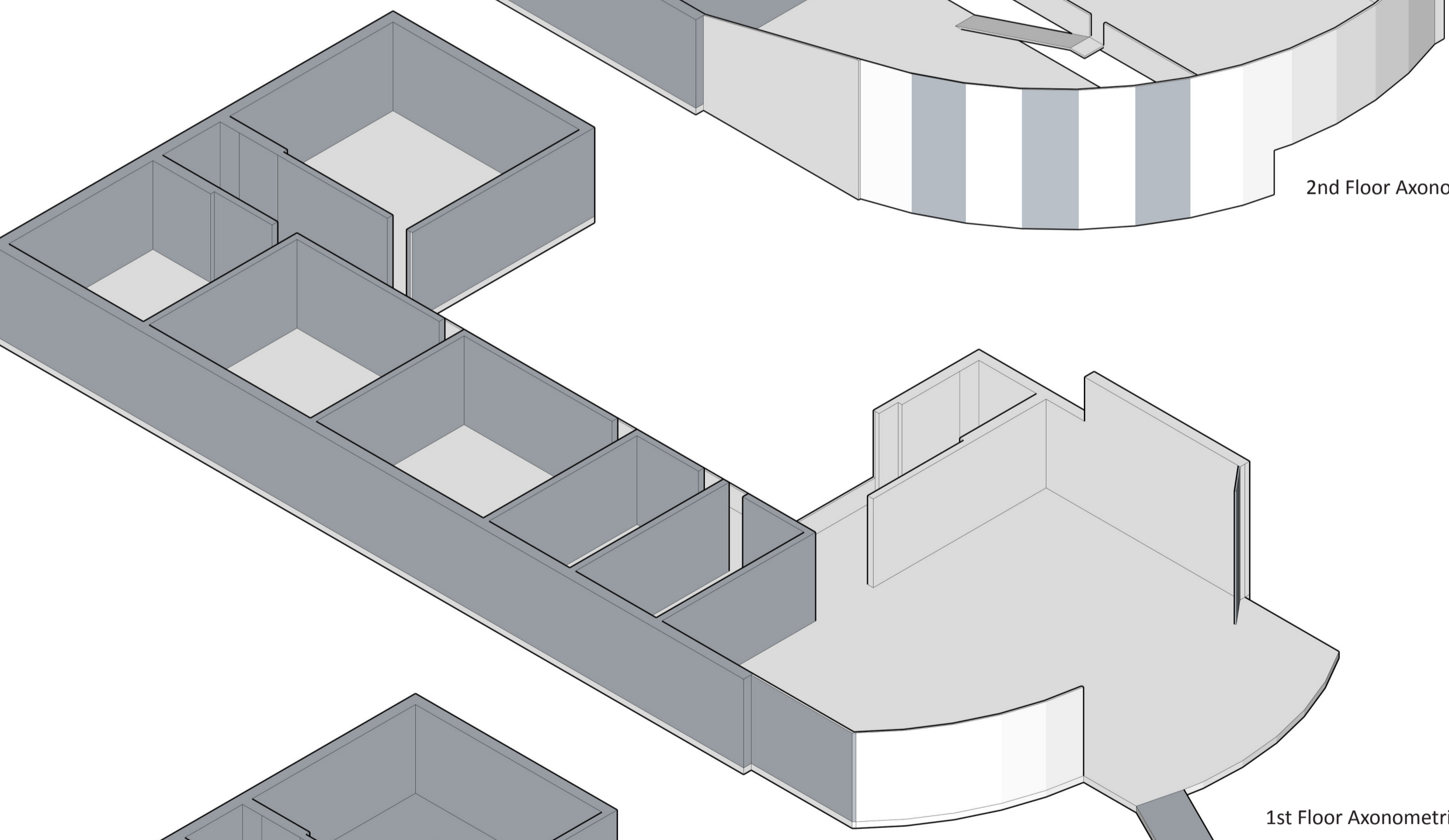
Roof Plan scale 1:200



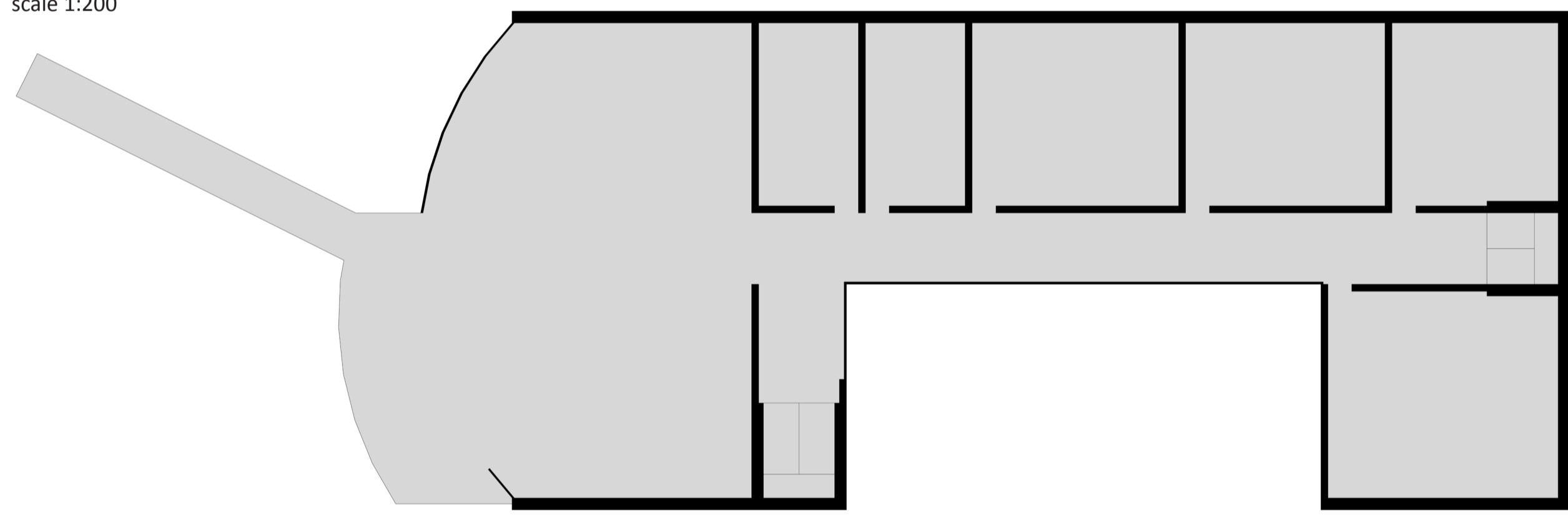
2nd Floor Axonometric scale 1:200



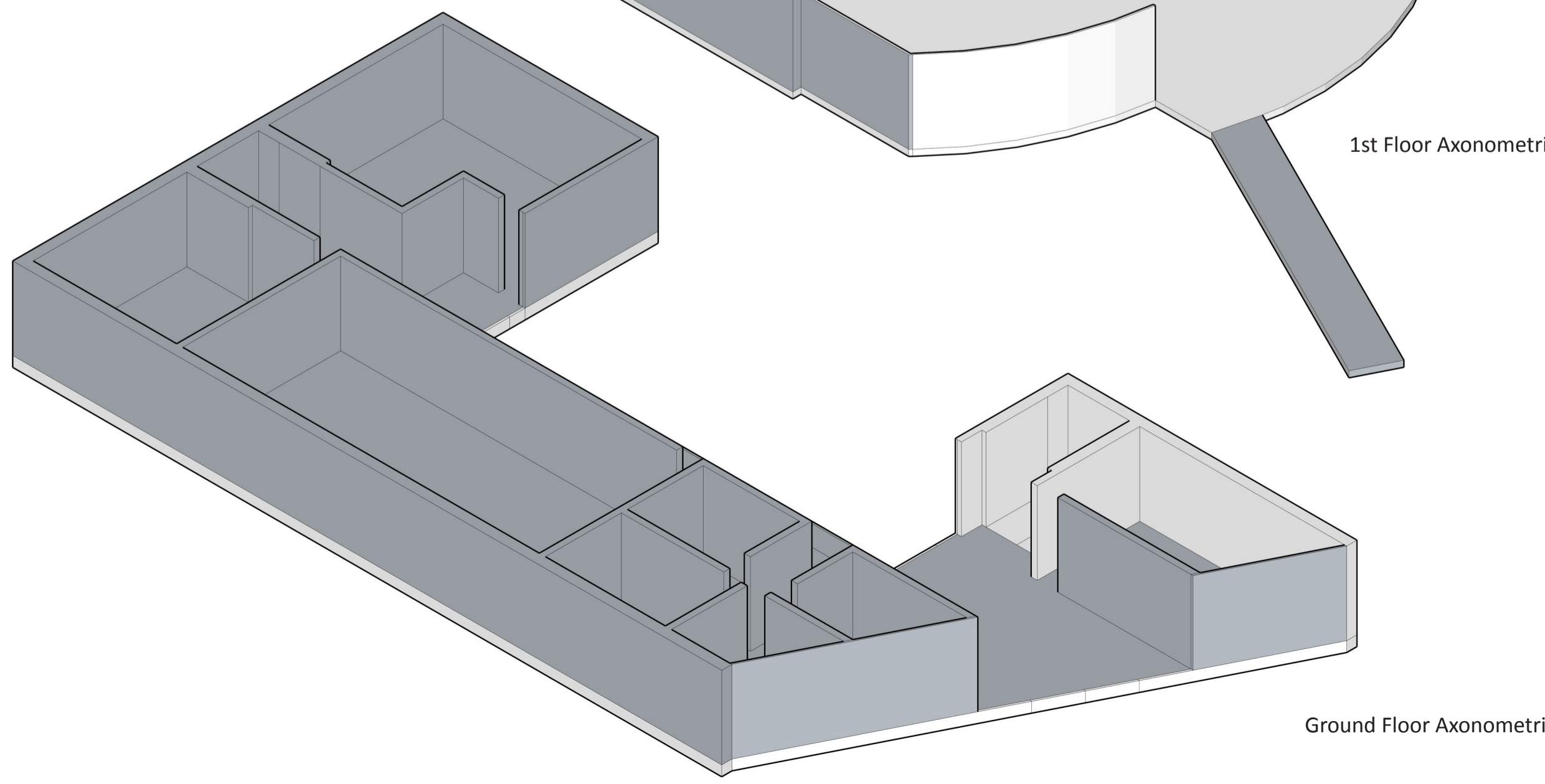
2nd Floor Plan scale 1:200



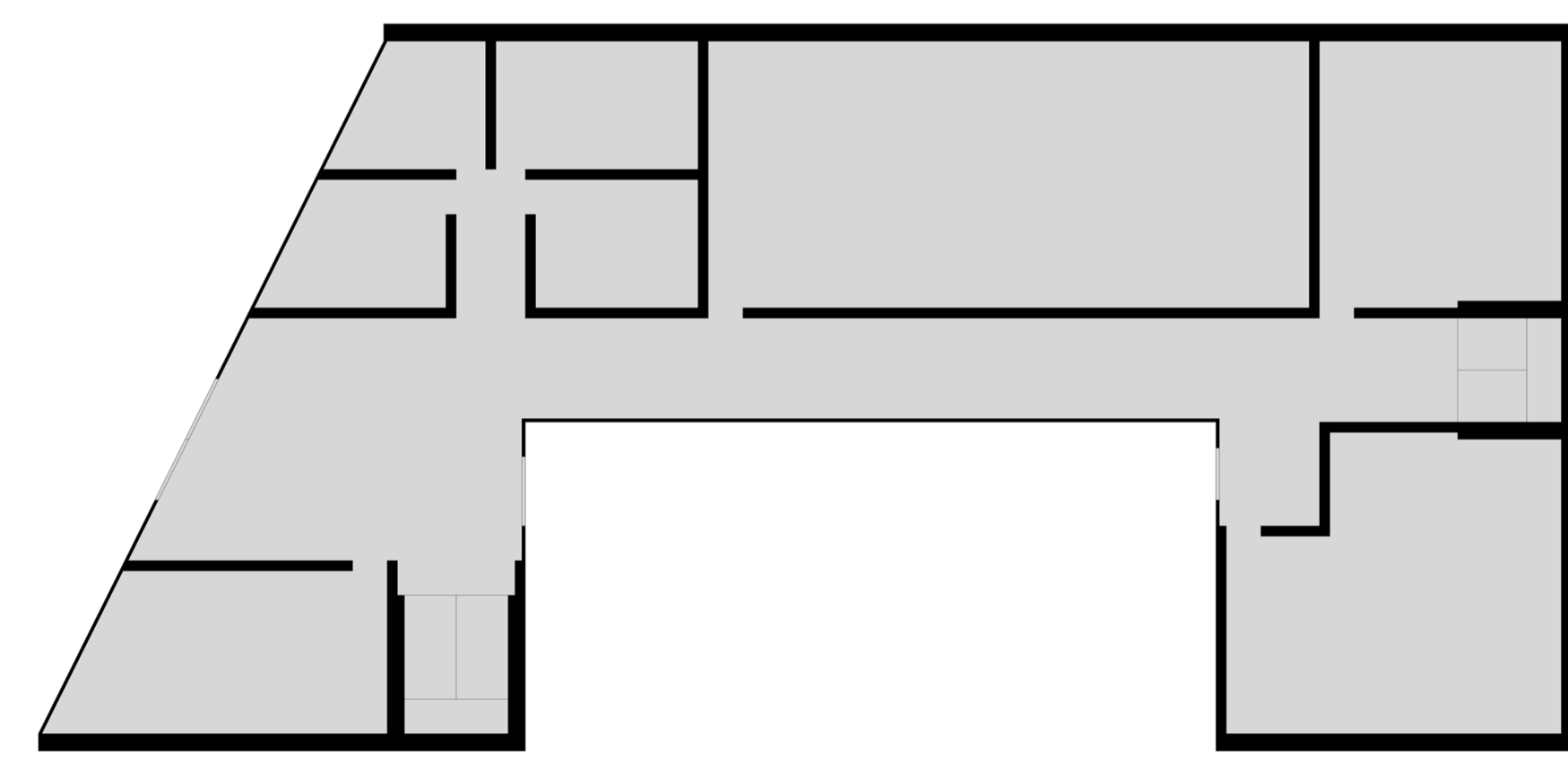
1st Floor Axonometric scale 1:200



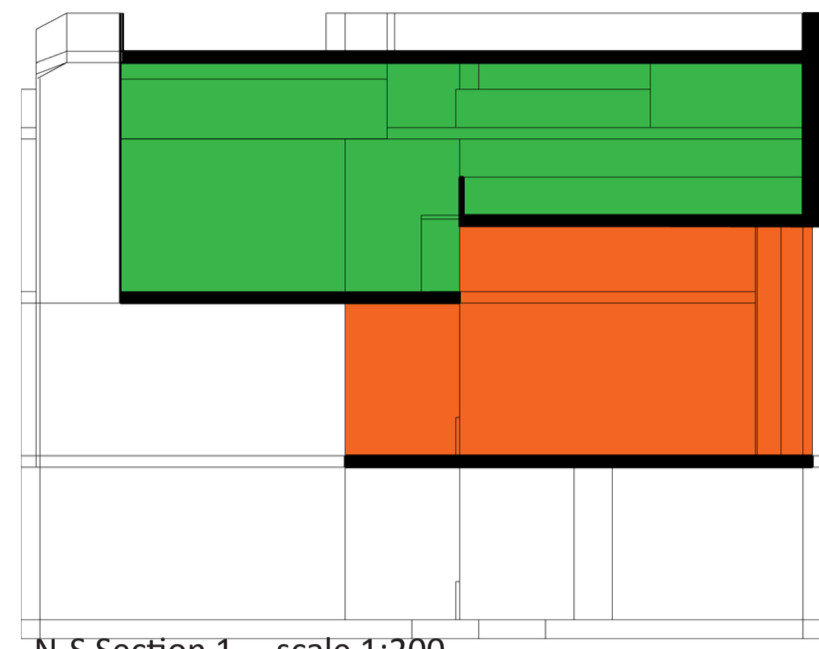
1st Floor Plan scale 1:200



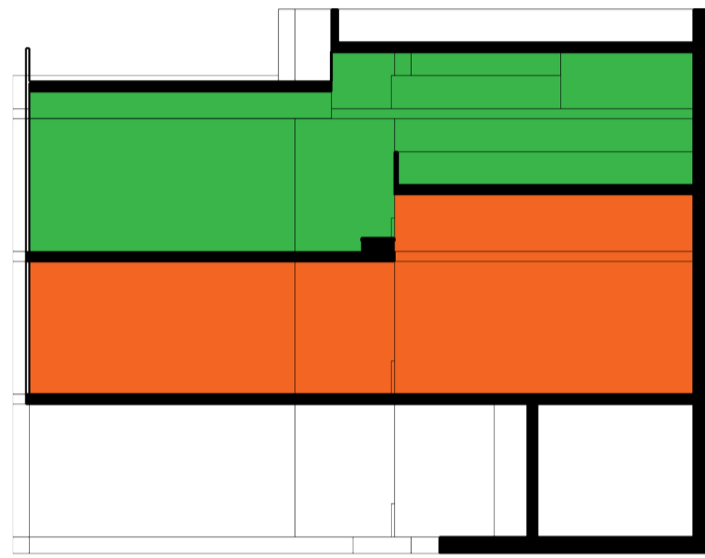
Ground Floor Axonometric scale 1:200



Ground Floor Plan scale 1:200



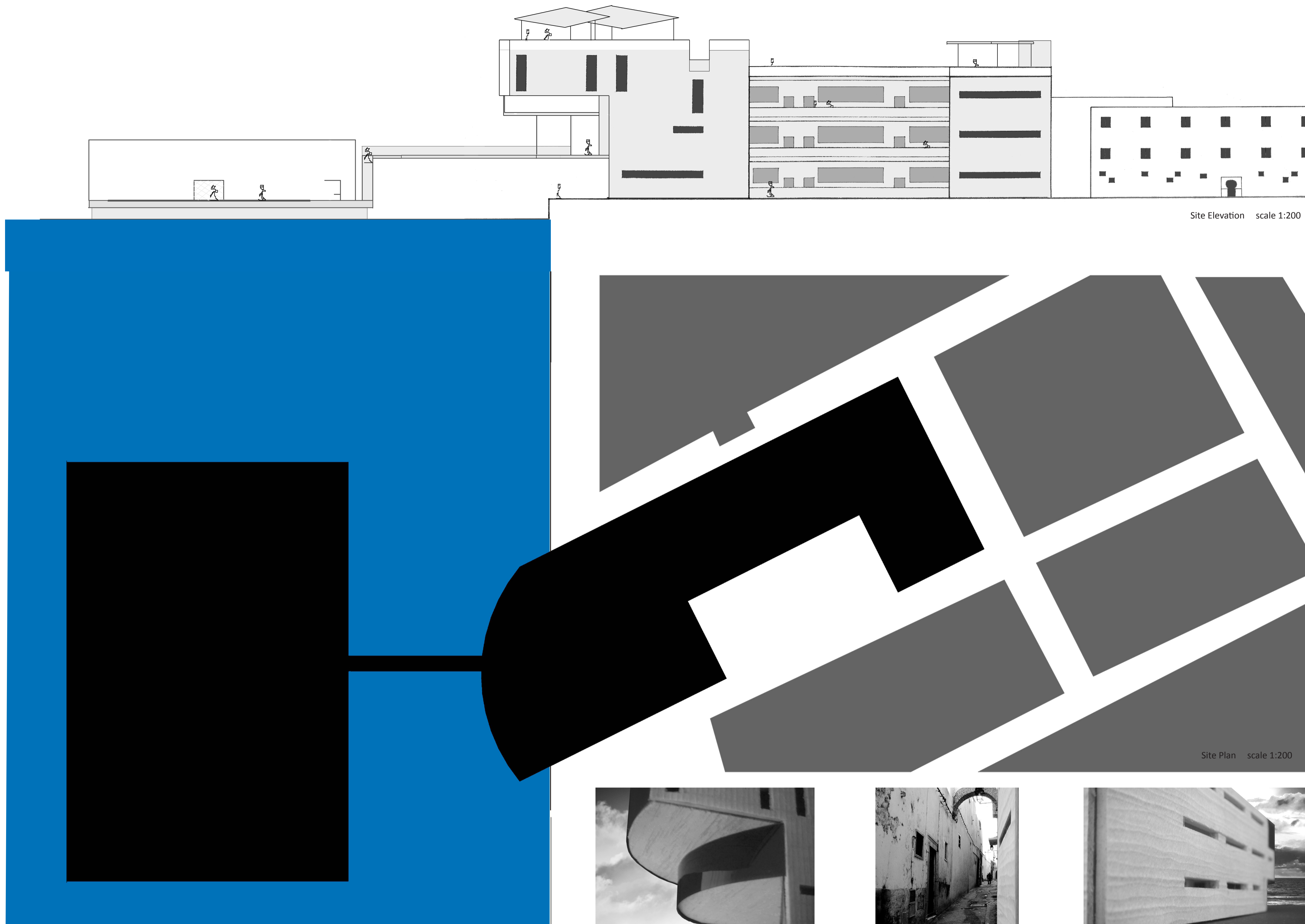
N-S Section 1 scale 1:200



N-S Section 2 scale 1:200

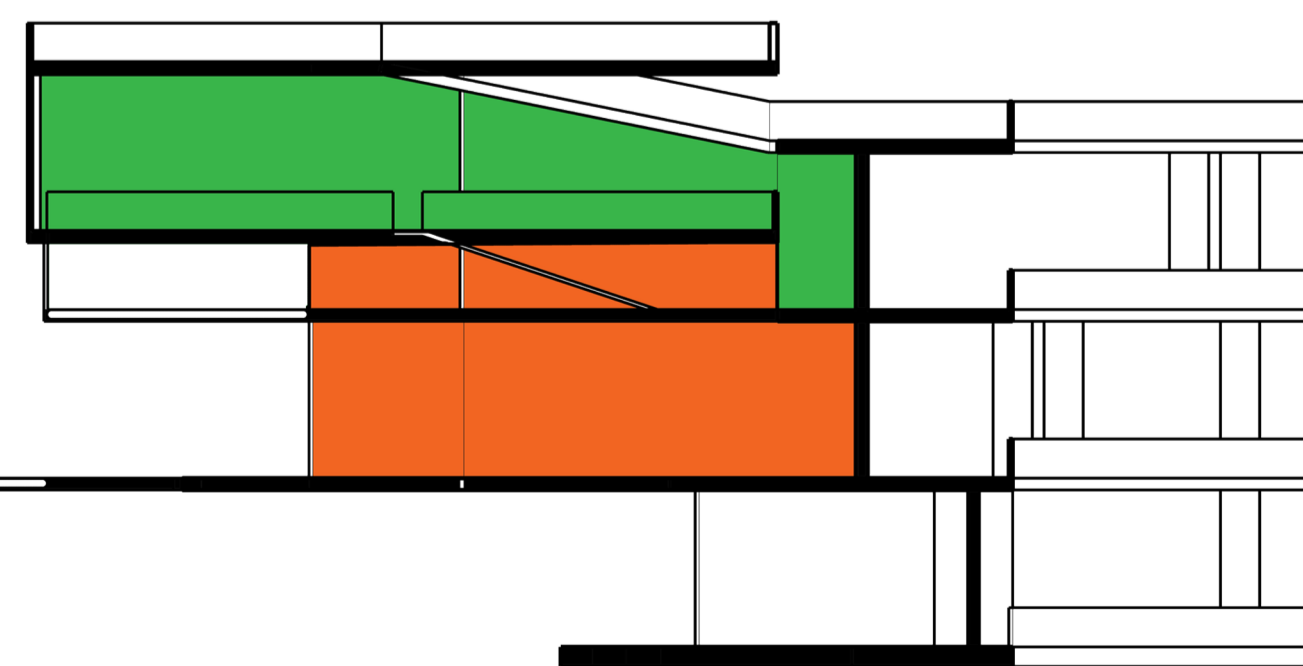


N-S Section 3 scale 1:200

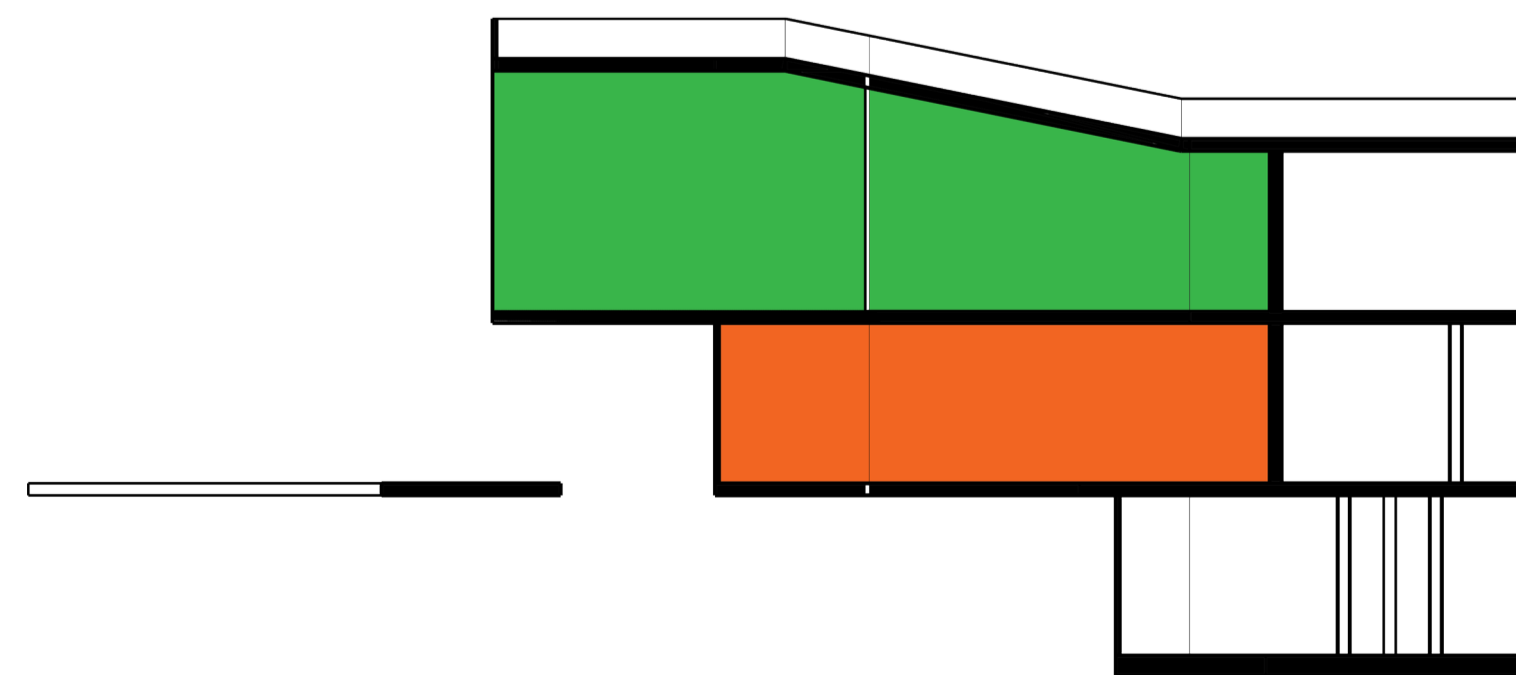


Site Elevation scale 1:200

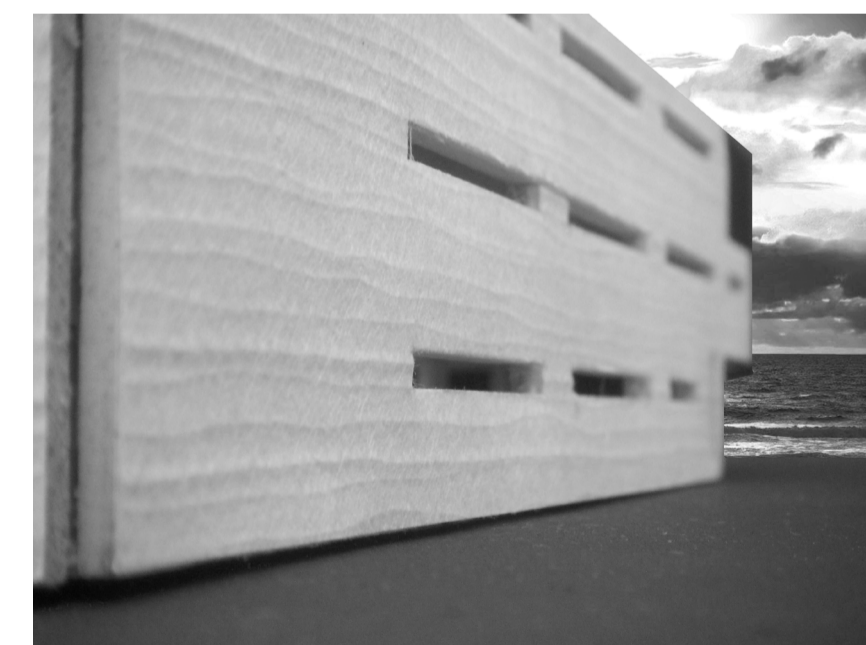
Site Plan scale 1:200



Long Section A scale vv1:200



Long Section B scale vv1:200



**F13 Michael Neely 307175677**

Lycée Pilote 'Lac de Tunis' / مدرسة كمال عبد المجيد لاسردرملا

This is one of a series of pilot middle schools recently established by the Tunisian government as centres of academic excellence. Students are fluent in Standard Arabic, French and English. The building provides the required teaching, recreation and support spaces to facilitate this learning environment.

Classrooms look into the courtyard for light and ventilation.

Main shared spaces - foyer, library, canteen - perch in the western end of the building, suspended over the foreshore and with views along and out from the water's edge.



Location Map scale 1:10 000