

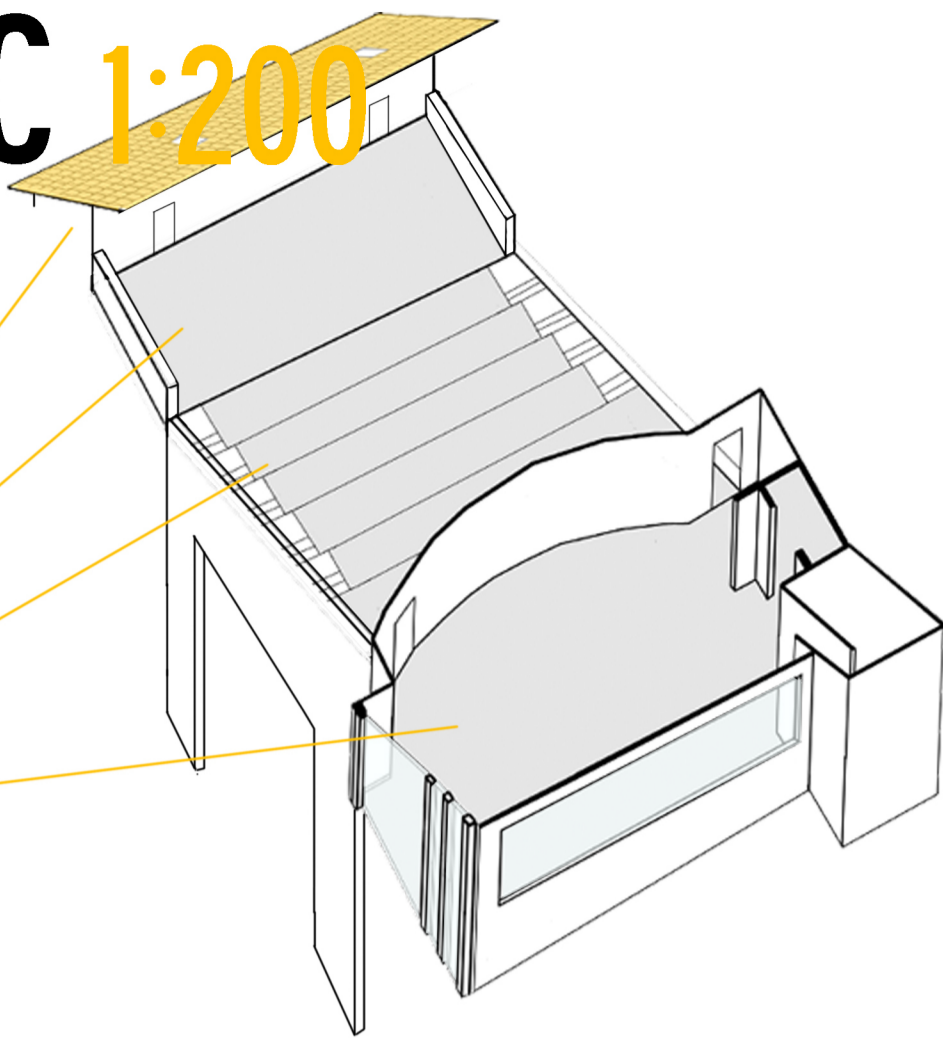
AXONOMETRIC 1:200

BACKSTAGE AREA/ REHEARSAL ROOM

OUTDOOR 'ROOFTOP' STAGE

OUTDOOR 'ROOFTOP' AUDITORIUM

PATRON'S LOUNGE



FLY BALCONY

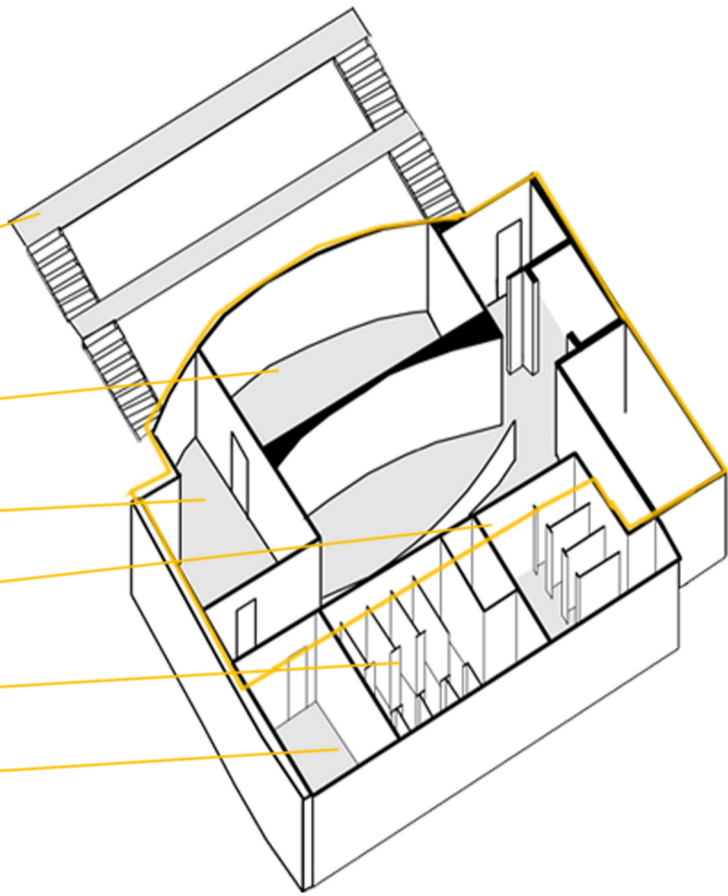
ARTIST'S LOUNGE

ADMINISTRATIONS OFFICE

FEMALE AMENITIES

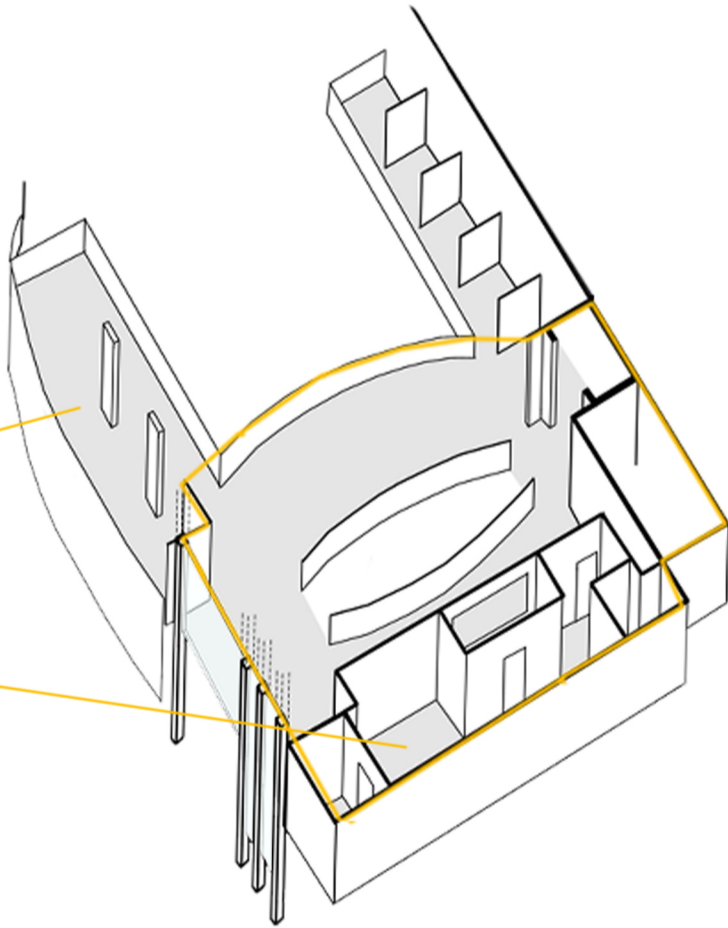
MALE AMENITIES

SHOWERS



BALCONY

BAR / RESTAURANT



FLY LOFT

BACKSTAGE AREA

SMALL STORAGE AREA

REHEARSAL AREA/ DRESSING ROOMS/ EXTRA STORAGE

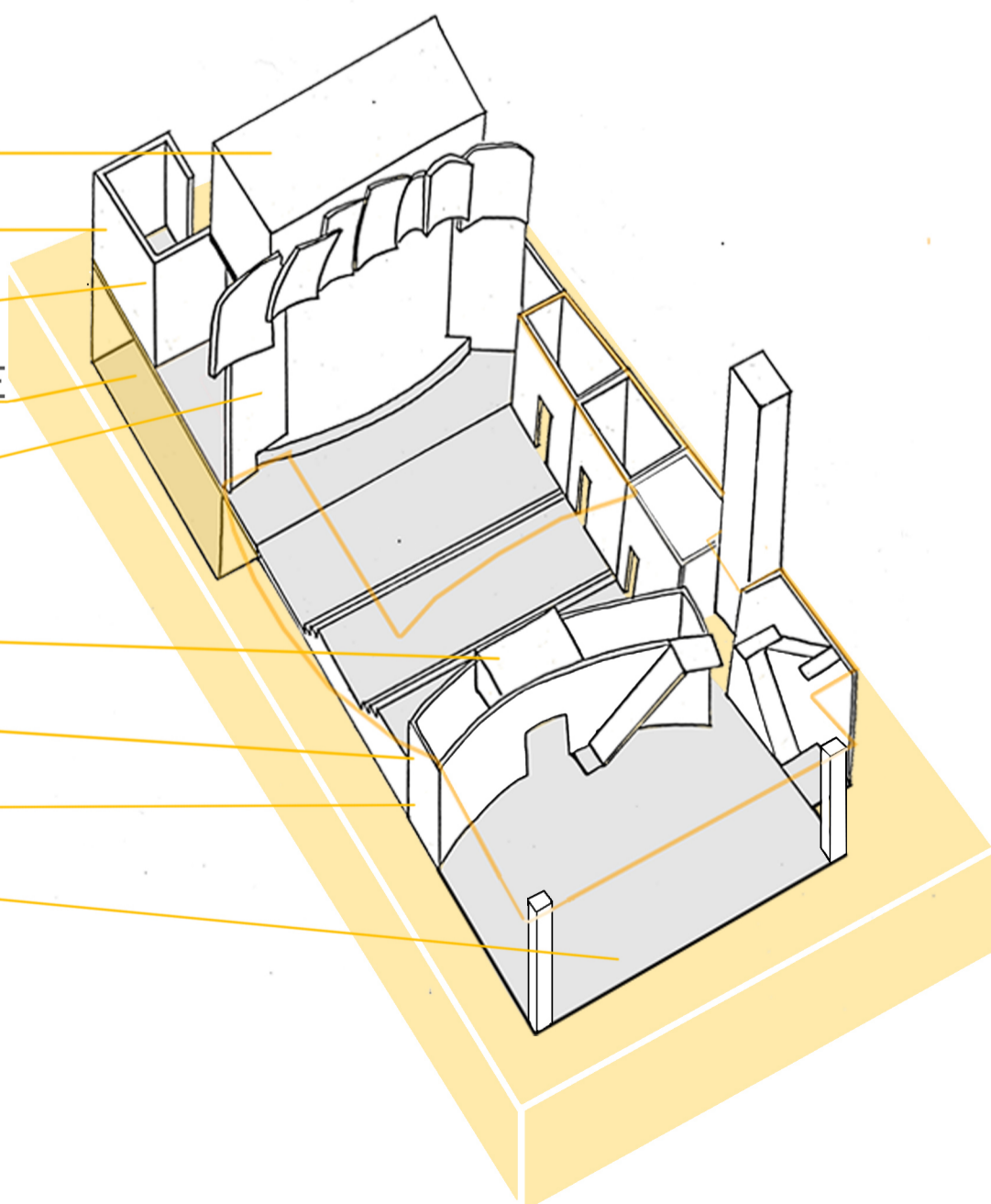
STAGE

CONTROL ROOM

CLOAK ROOM

BAR

MAIN ENTRANCE



KROV VRH KAZALIŠTE

DUBROVNIK THEATRE/BAR/RESTAURANT

ROOFTOP THEATRE

MY BUILDING STRONGLY EMBODIES THE RELATIONSHIP BETWEEN THE OLD AND THE NEW OF DUBROVNIK, AND IN A SENSE THIS ALSO EXPLORES THE CONCEPT OF TRANSFORMATION. THE FUNCTION OF THE 'ROOFTOP THEATRE' HOLDS A STRONG CORRELATION WITH THE CITY'S CULTURAL, TRADITIONAL AND ARCHITECTURAL ASPECTS, YET A MOVE FROM THE CITIES ORTHODOX STRUCTURES IS ALSO EXPRESSED IN ITS FORM.

DUBROVNIK CONTAINS A CULTURE HEAVILY DIRECTED TOWARDS PERFORMING ARTS, THEATRES AND MUSIC FESTIVALS. A FACTOR WHICH IS FURTHER EMPHASISED AS THE TOURIST INDUSTRY OF THE CITY CONTINUES TO GROW, OPENING UP LOCAL EVENTS SUCH AS THE WORLD RENOWNED SUMMER MUSIC FESTIVAL TO A WIDER AUDIENCE. AS A RESULT, THIS GRANTS FOR THE ROOFTOP THEATRE TO BECOME A LOCATION OF SOCIAL GATHERING FOR BOTH LOCALS AND TOURISTS.

THE FORM OF THE BUILDING IS INFLUENCED BY AN ARRAY OF INTENTIONS RELEVANT TO ITS FUNCTION AND LOCATION. KNOWN FOR THE SEA OF ORANGE TERRACOTTA TILED ROOVES, THERE IS ALMOST AN URGE TO CLIMB AND SIT WITHIN IT. AN OPPORTUNITY FOR THIS IS ALLOWED WITH A ROOFTOP AUDITORIUM AND STAGE, ALMOST WEDGED BETWEEN TWO SETS OF TRADITIONAL TILED ROOVES. FURTHERMORE, THE SIMPLISTIC FIGURE OF THE PROSCENIUM ARCH IS REPEATED WITHIN THE BUILDINGS STRUCTURE, GIVING THE BUILDING A STRONG CORRELATION WITH ITS FUNCTION.

IN EXPRESSING THE OLD AND THE NEW, MATERIAL CHOICE WAS DEEPLY CONSIDERED. WHILE THE BUILDING CONFORMS TO DUBROVNIK'S TRADITIONAL INFRASTRUCTURE STRUCTURES AND MATERIALS (LIME WASHED SANDSTONE AND ORANGE TERRACOTTA ROOF TILES) THIS WAS INTEGRATED WITH GLASS PANELS, CONCRETE AND LAMINATED TIMBER - MATERIALS FAIRLY FAMILIAR WITHIN CONTEMPORARY ARCHITECTURE. THE RESULT IS A BUILDING WHICH DEFINES THE RELATIONSHIP BETWEEN THE OLD AND NEW OF DUBROVNIK.

ANGELA WU 310242142

