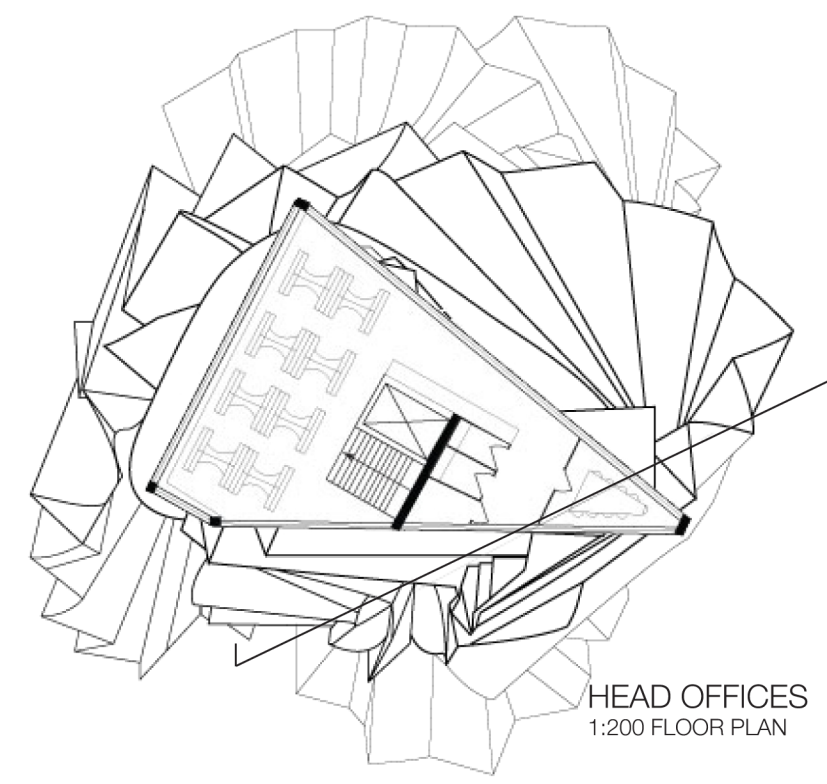
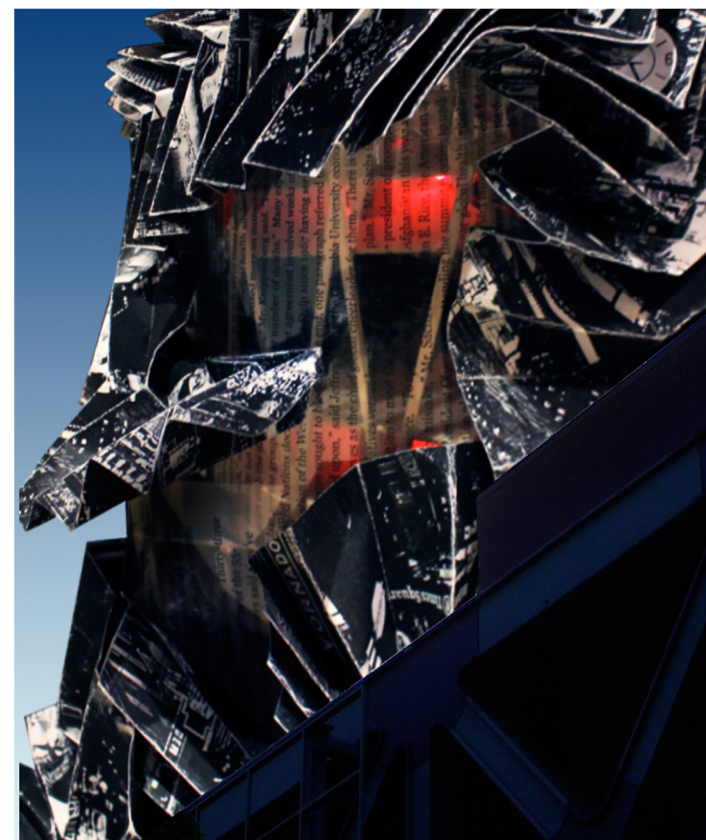
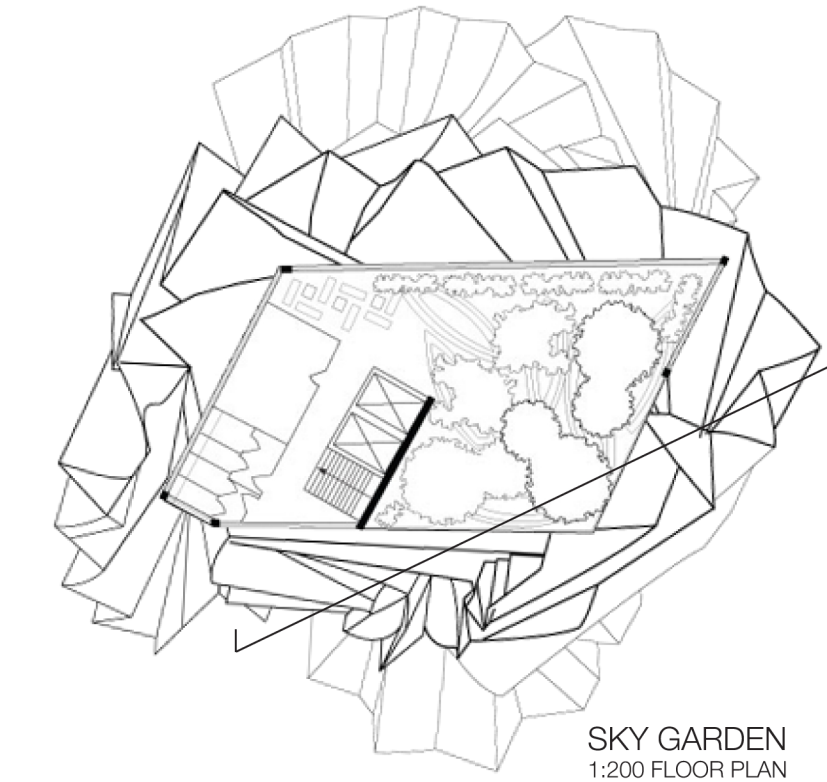


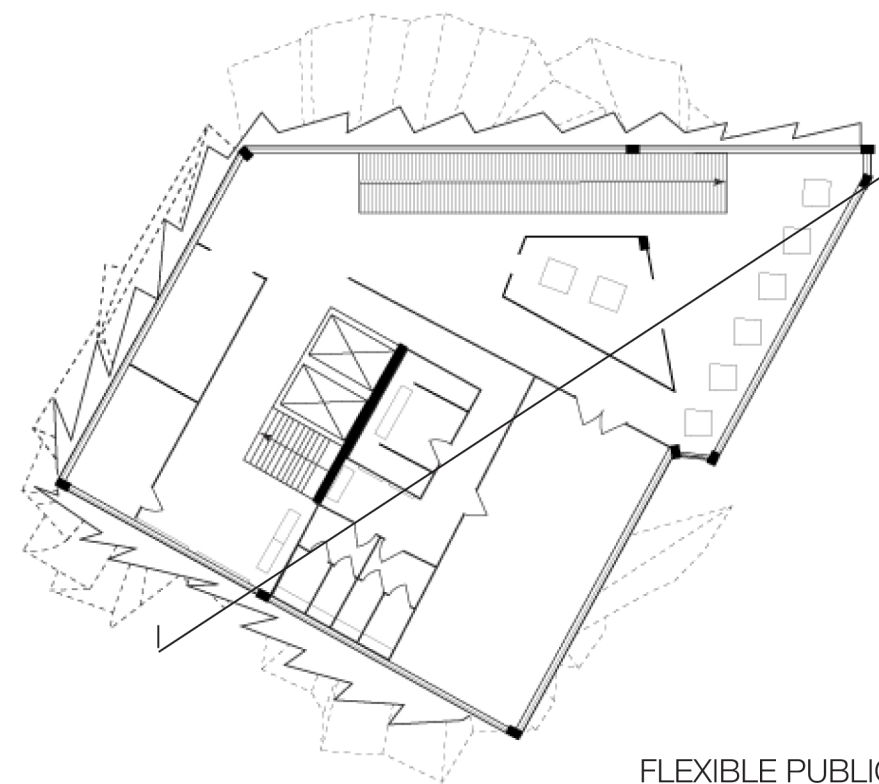
SITE ELEVATION  
SCALE 1:200



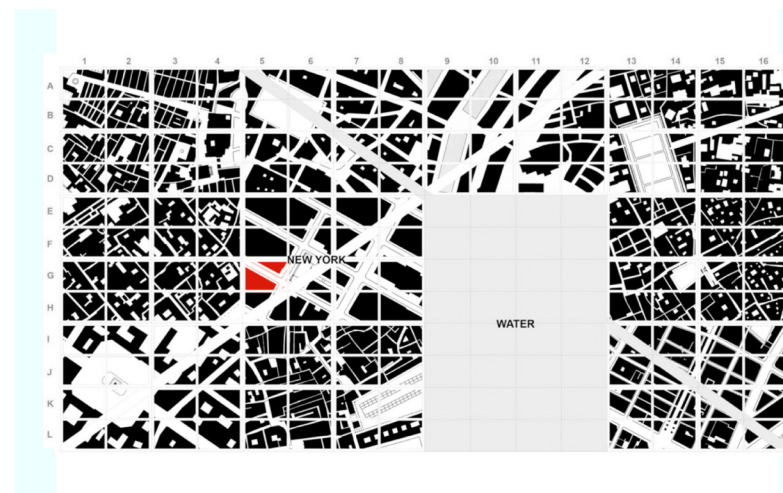
HEAD OFFICES  
1:200 FLOOR PLAN



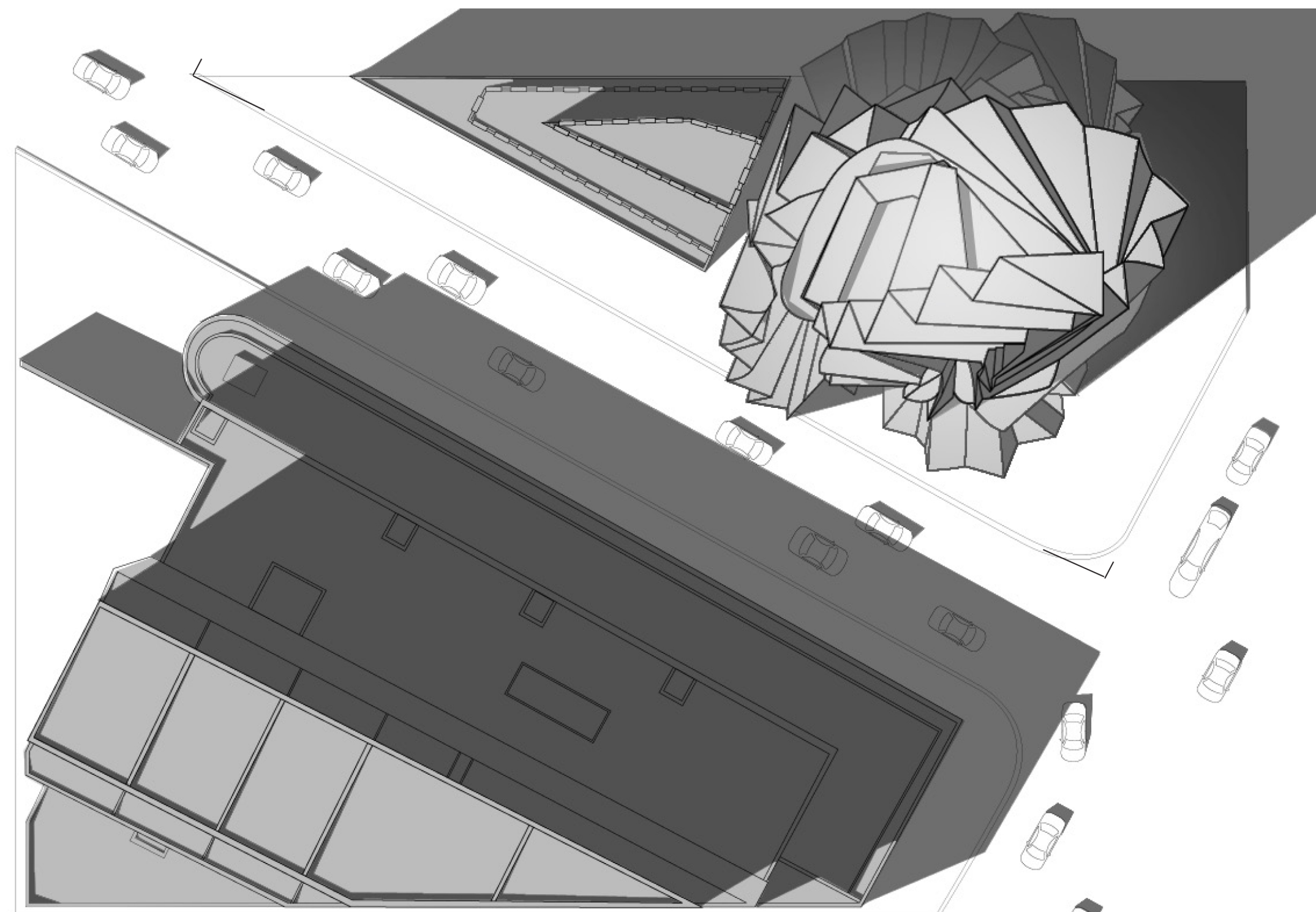
SKY GARDEN  
1:200 FLOOR PLAN



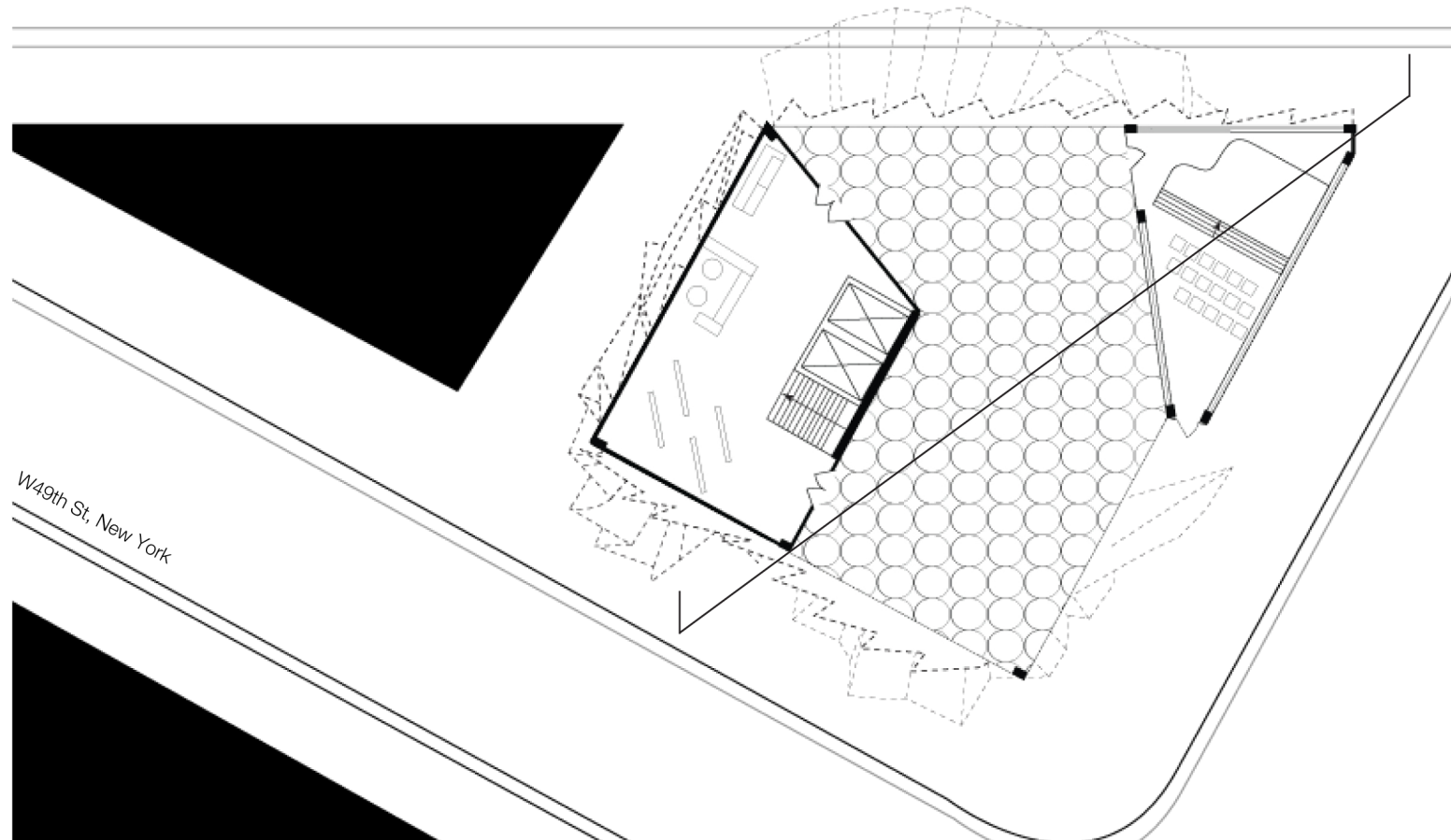
FLEXIBLE PUBLIC &  
EXHIBITION USE  
1:200 FLOOR PLAN



BROADCASTING HEADQUARTERS  
**NEW YORK CITY**  
TIFFANY LIEW | SID 310198135

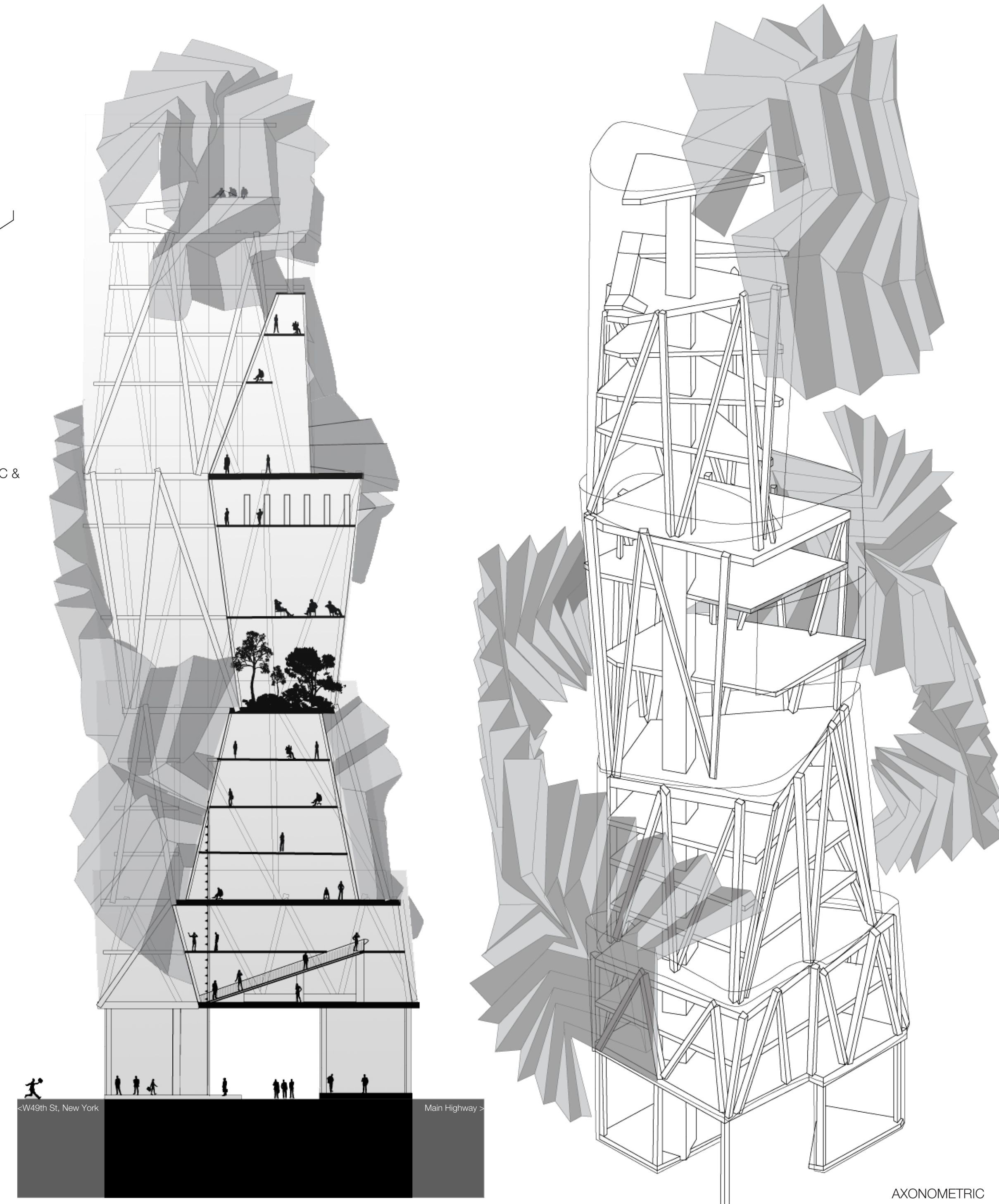


AERIAL PLAN  
SCALE 1:200  
BLOCK REF: G5

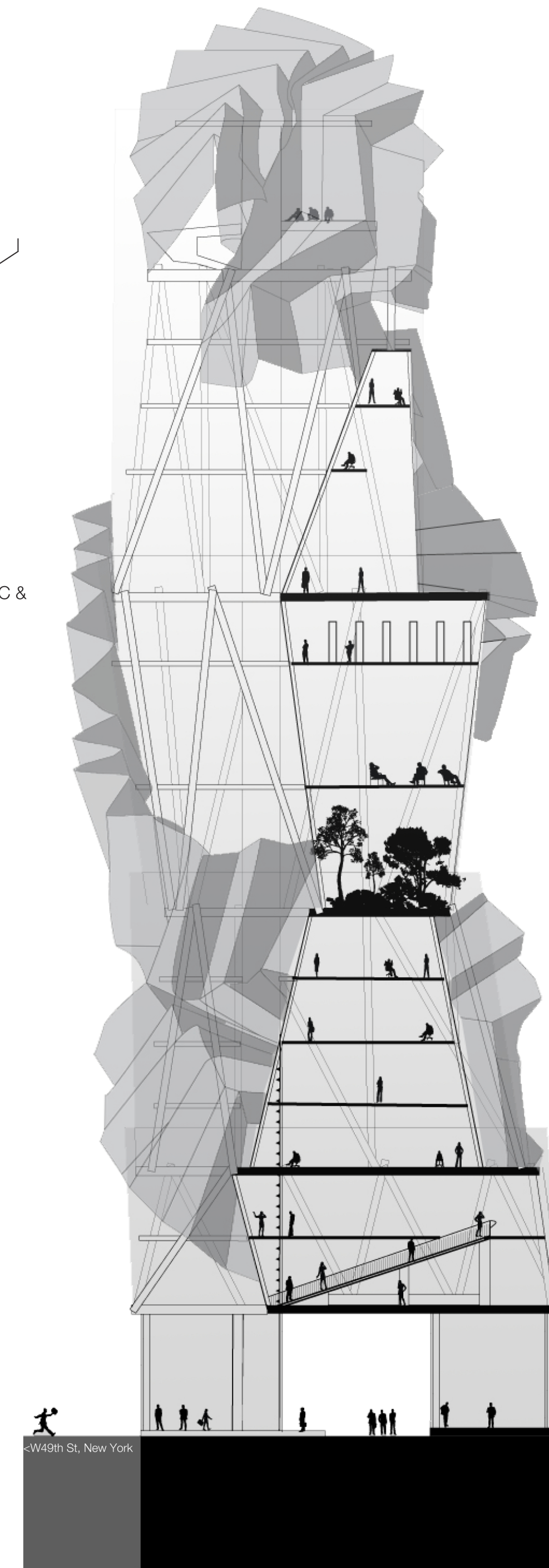


GROUND FLOOR PLAN  
SCALE 1:200

As a broadcasting corporation's headquarters, the office building explores issues of interference, filtering and transparency in New York's transmission of media. With a friction between the wish to appear objective in its delivery of information and the subjective nature of representation, communication becomes central to its program. Through its structure's shifting geometry, notions of manipulation and ideas of 'treated' information arise; the building's multiple skins express how through selection of information, the media both exposes and conceals. All-in-all, the building's domineering presence questions the extent to which New York epitomises the liberty found in the city's democracy, emphasising the need for a free public voice.  
BLOCK REFERENCE: G5



AXONOMETRIC  
PROJECTION  
SCALE 1:200



SECTION OF SITE  
SCALE 1:200