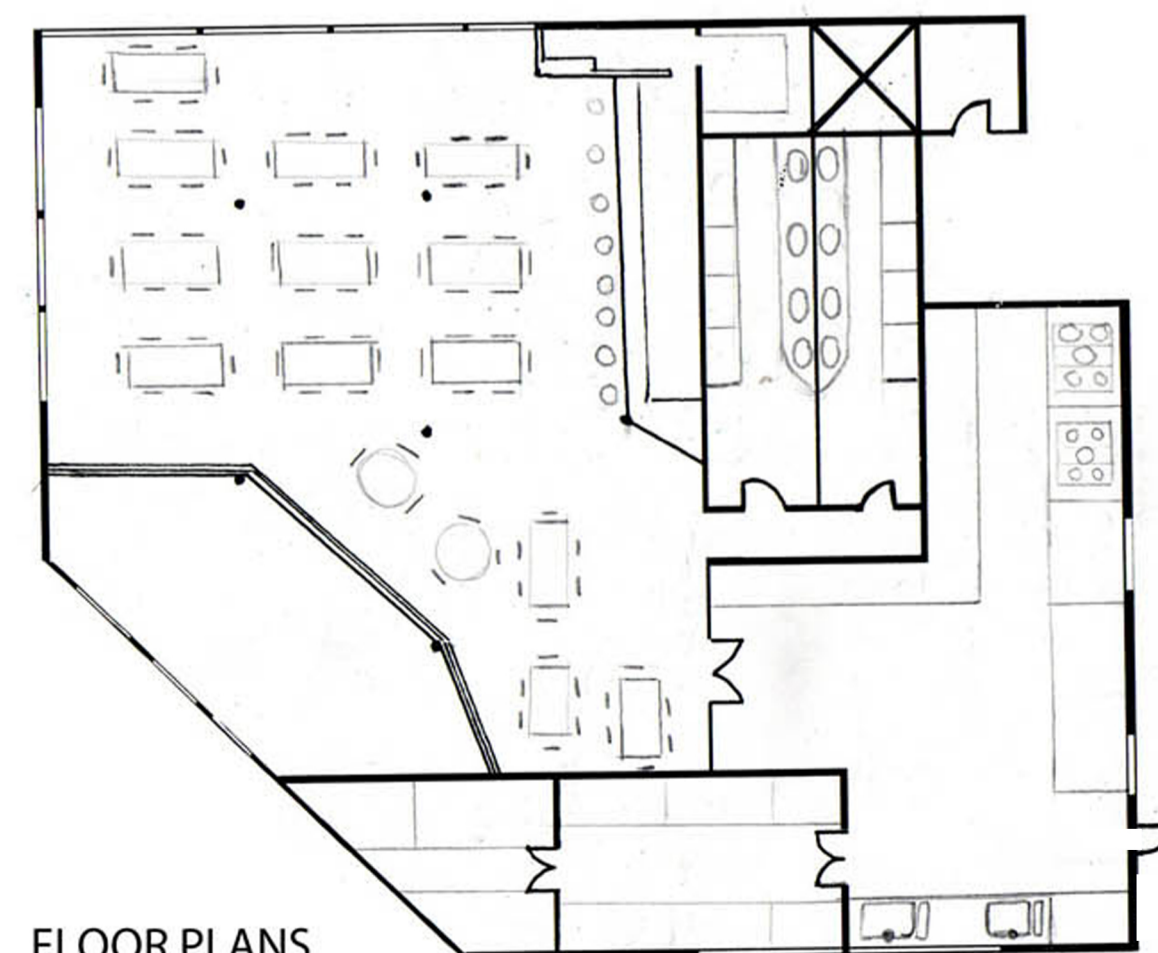
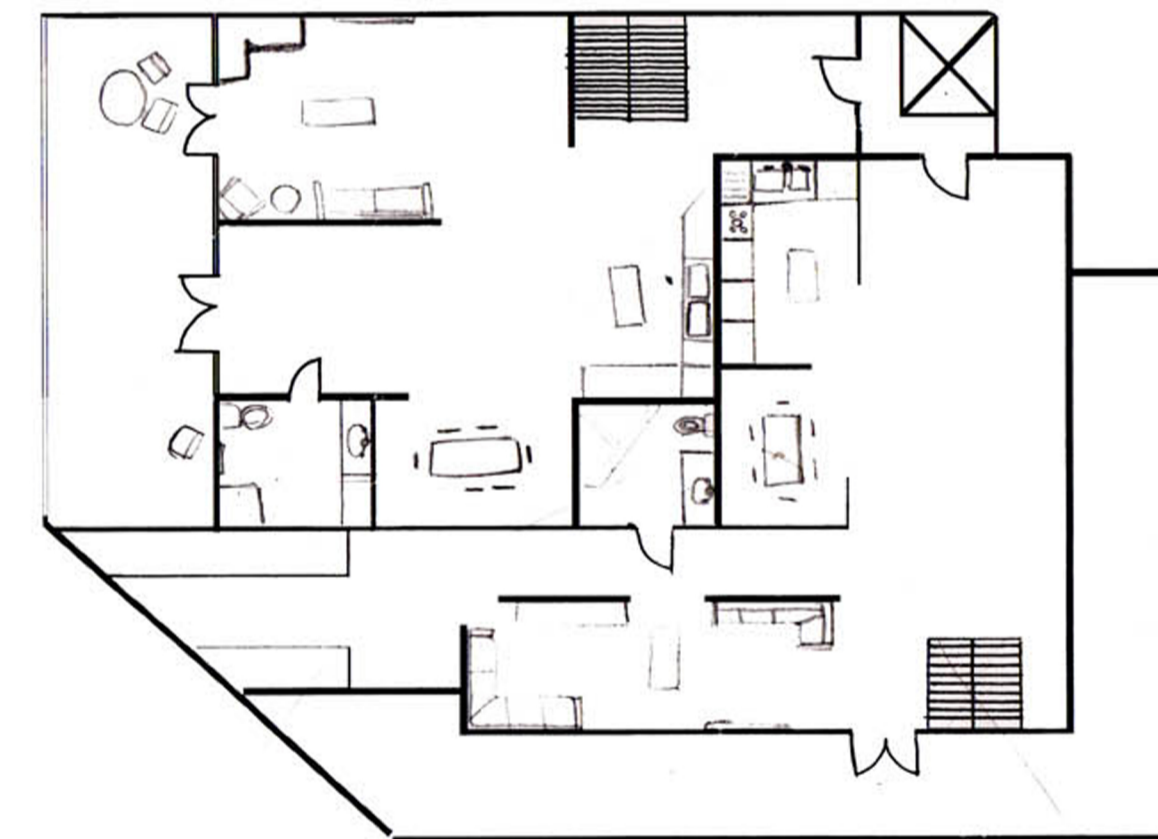
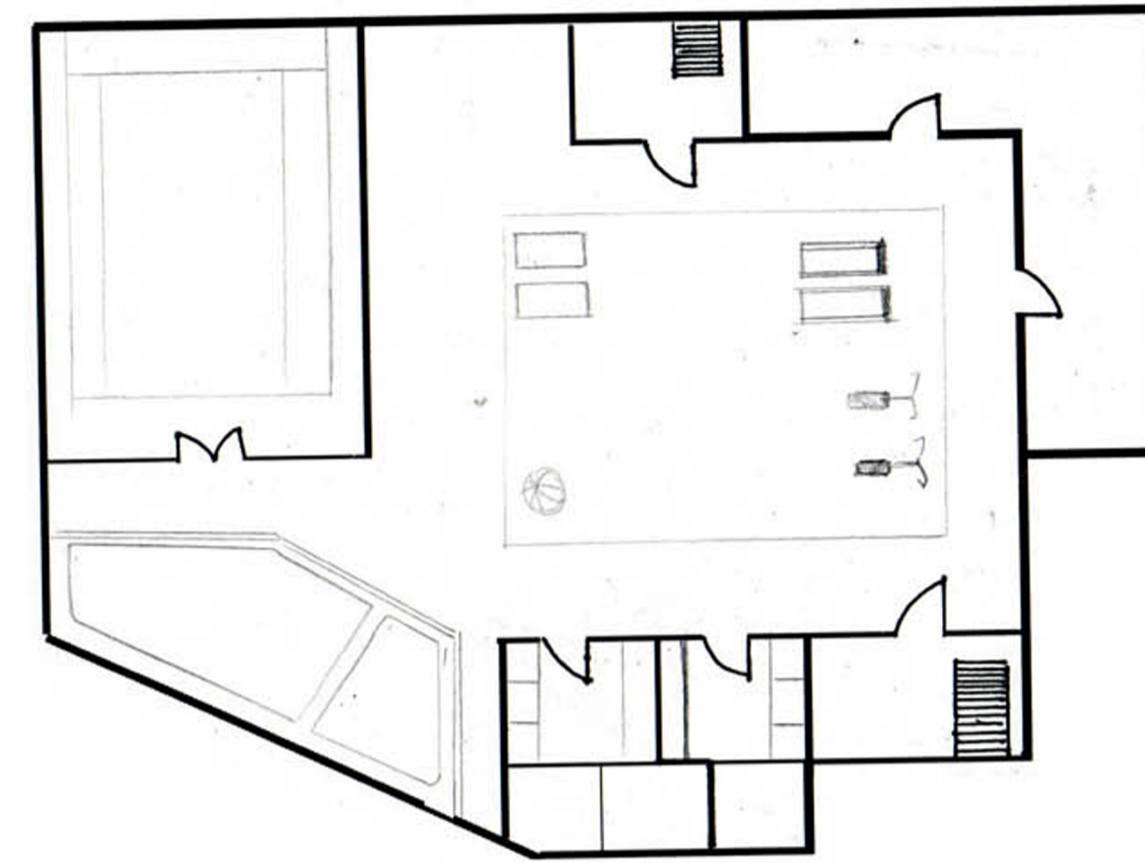
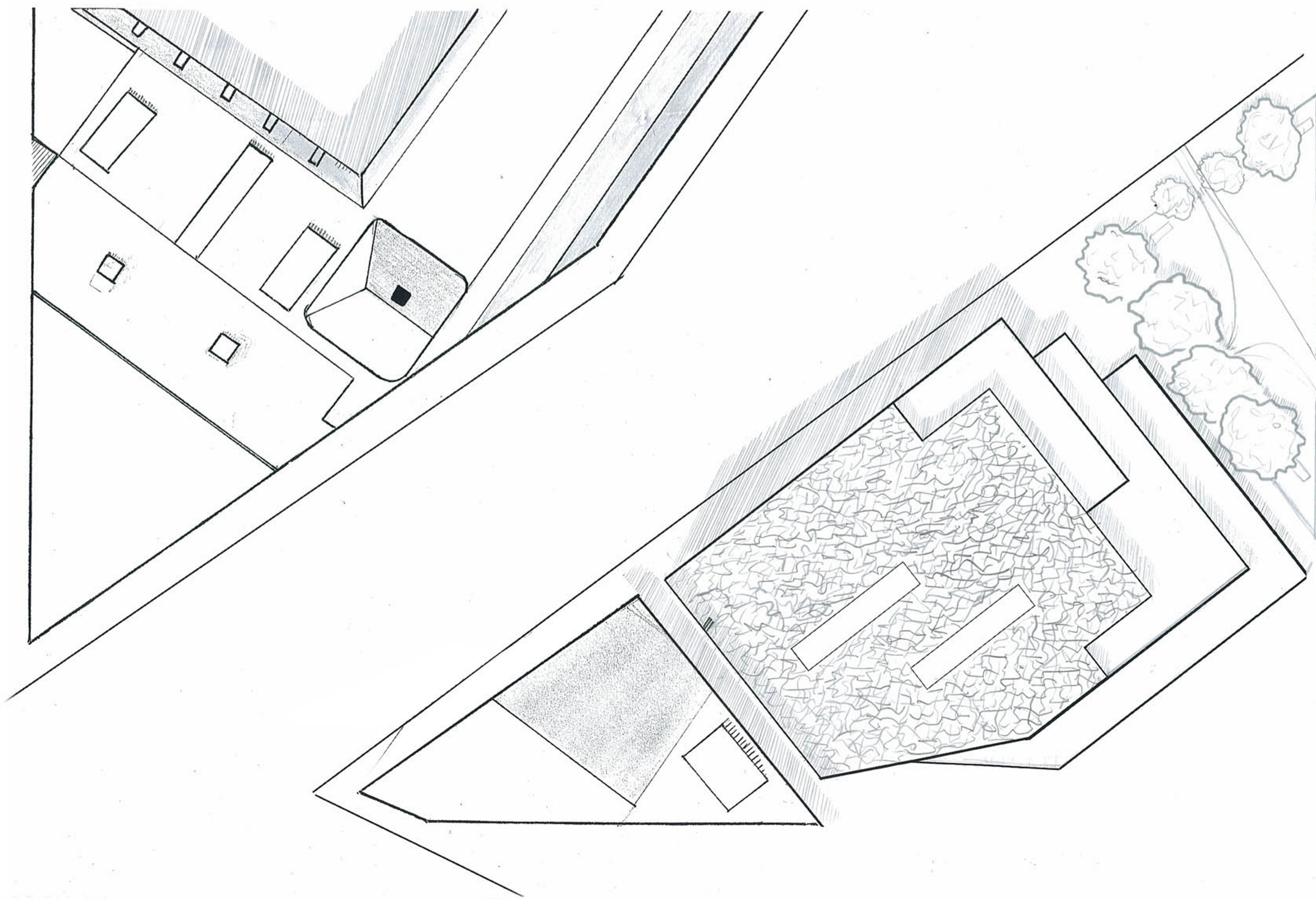


Given the task of redesigning a piece of Paris, namely the Place Vendome, research into the city's history, tradition and culture opened up many opportunities. Haussmann's renovation of the City in 1852 imposed many regulations like the height and symmetry of the buildings.

My building, consisting of a restaurant with apartments above, acts as a variant of these regulations; the harsh metal, the disjonted assymetry and the large exposure work together to create a dominating, imposing presence, rather than blending in with the surrounding traditional buildings. My building aims to represent innovation and uniqueness in a very strictly similar surrounding.

AERIAL PLAN  
1:200



FLOOR PLANS  
1:200

AXONOMETRIC  
1:200

