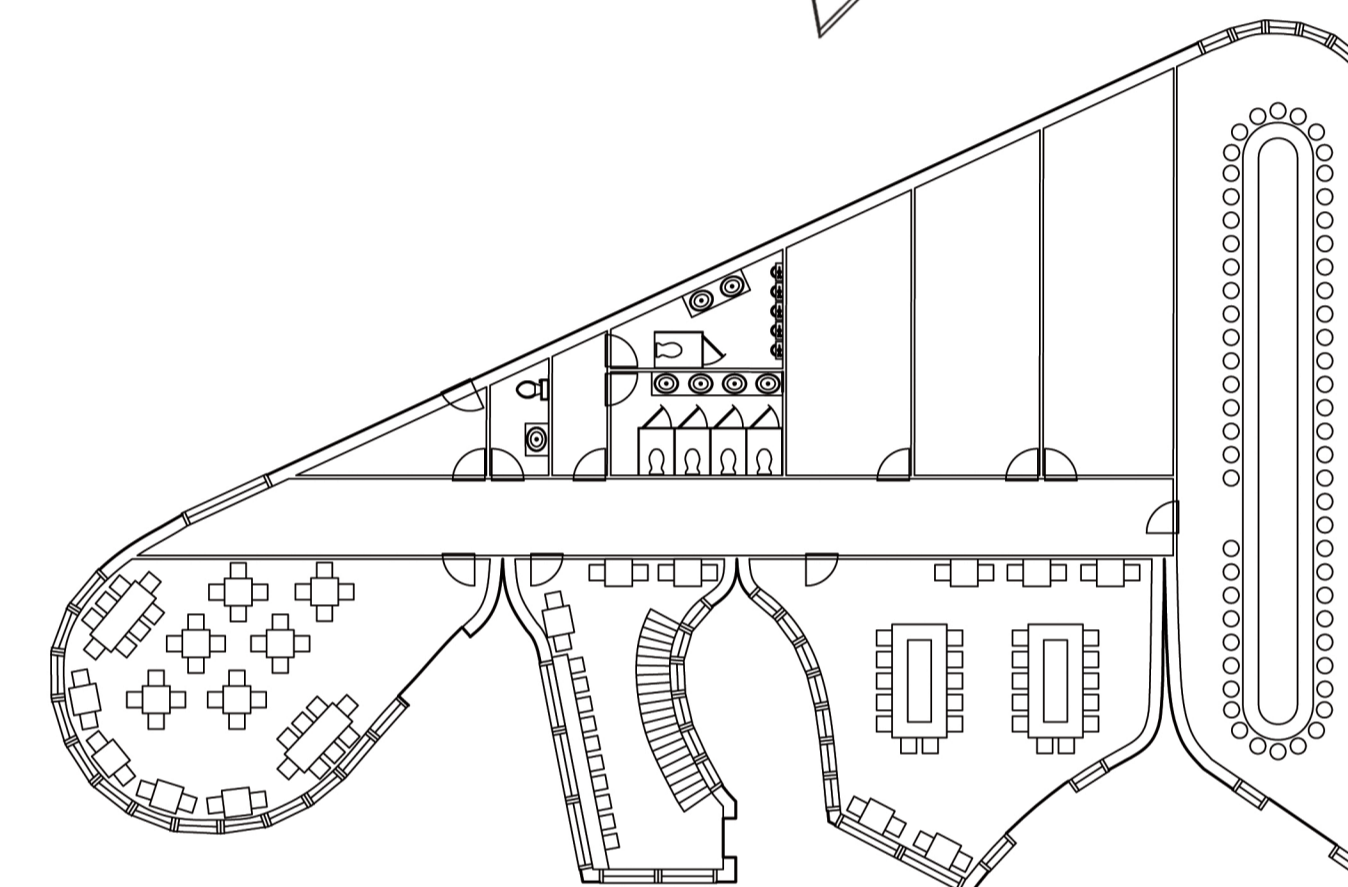
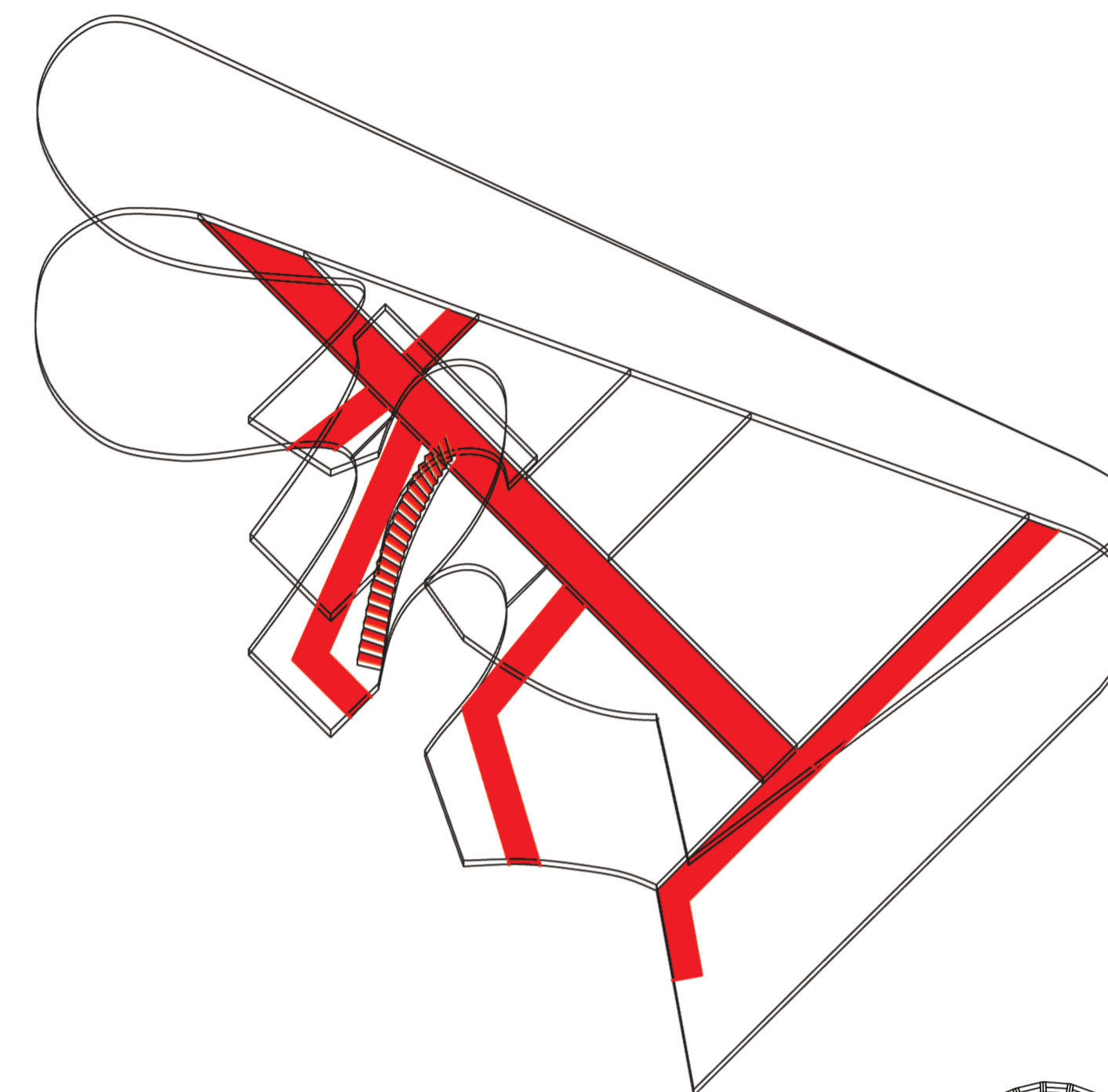
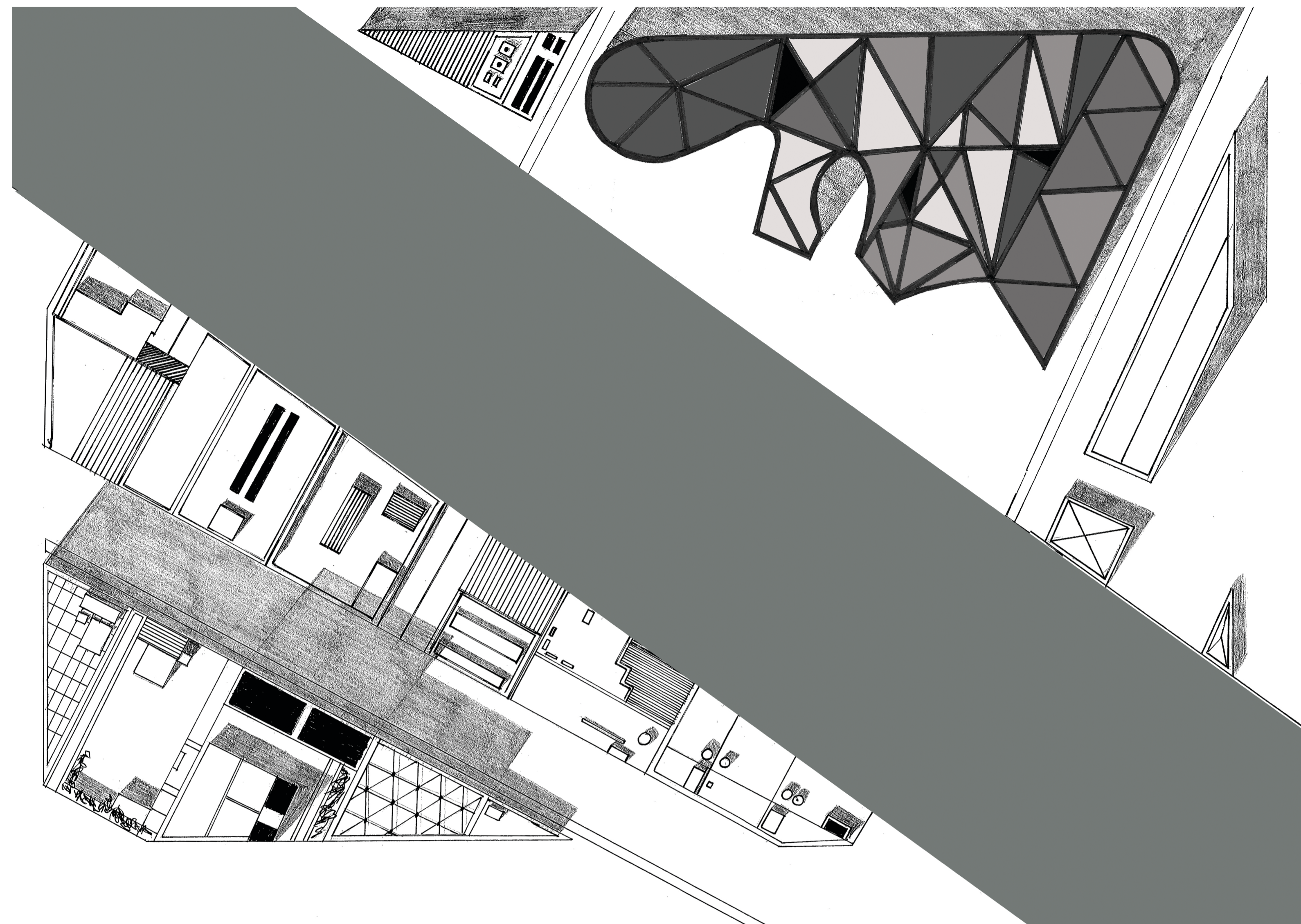
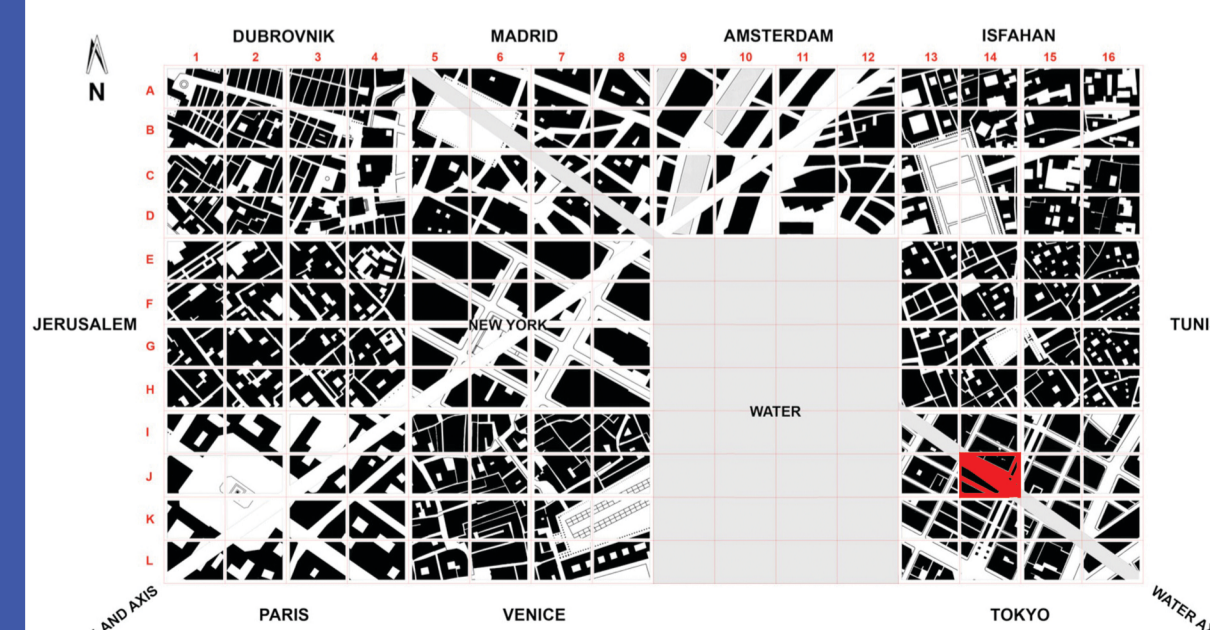


SITE J14 TOKYO
 SCALE 1:200
 SONIA CUNNINGHAM
 310220920



The Quasine restaurant complex is designed to be a fine dining landmark within the metropolitan city of Tokyo, Japan. The name of the building originates from its plan of four separate restaurants, each with distinct traditional and modern variations on the Japanese cuisine. The facade is brightly coloured and the roof structure almost tent-like, creating a sense of attraction and wonder towards the building and encouraging visitors to venture inside.

Intimate dining spaces are created within the form due to its irregular shape. The four separate restaurants are defined also by this shape and also by the use of four colours on the exterior. More functional spaces such as bathrooms and kitchens are placed towards the rear and are of a more rigid and structured shape. The two contrasting areas are divided strongly, yet simultaneously connected by a hallway down the center axis of the building.



QUASINE

RESTAURANT COMPLEX

