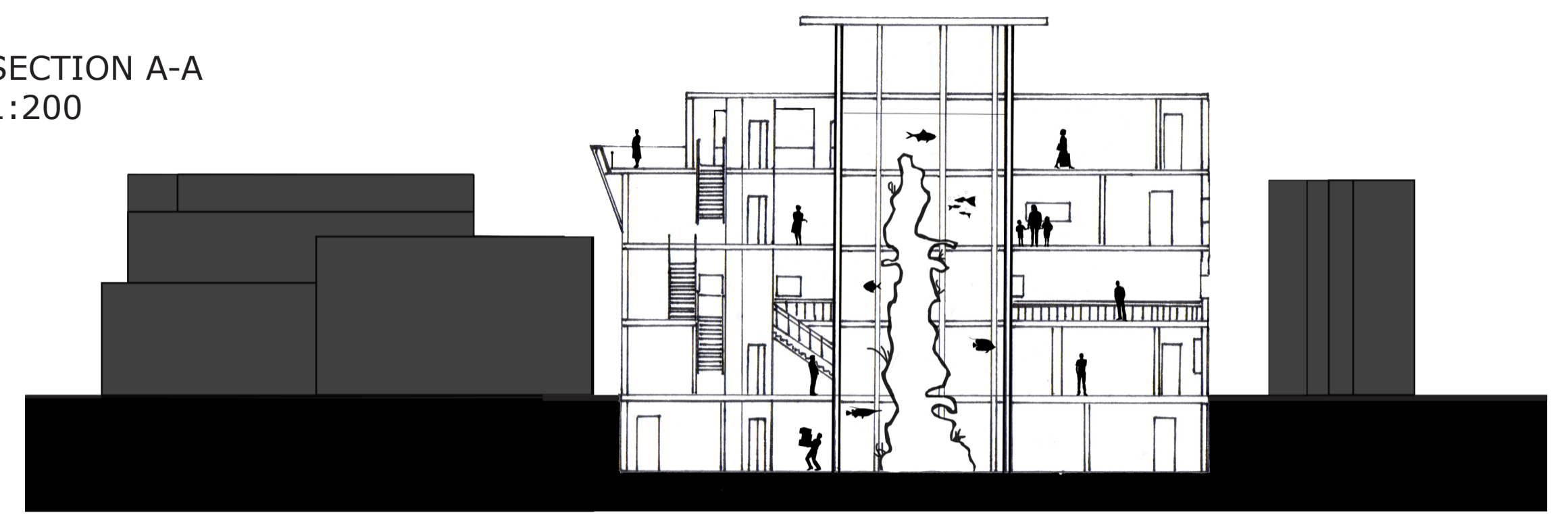
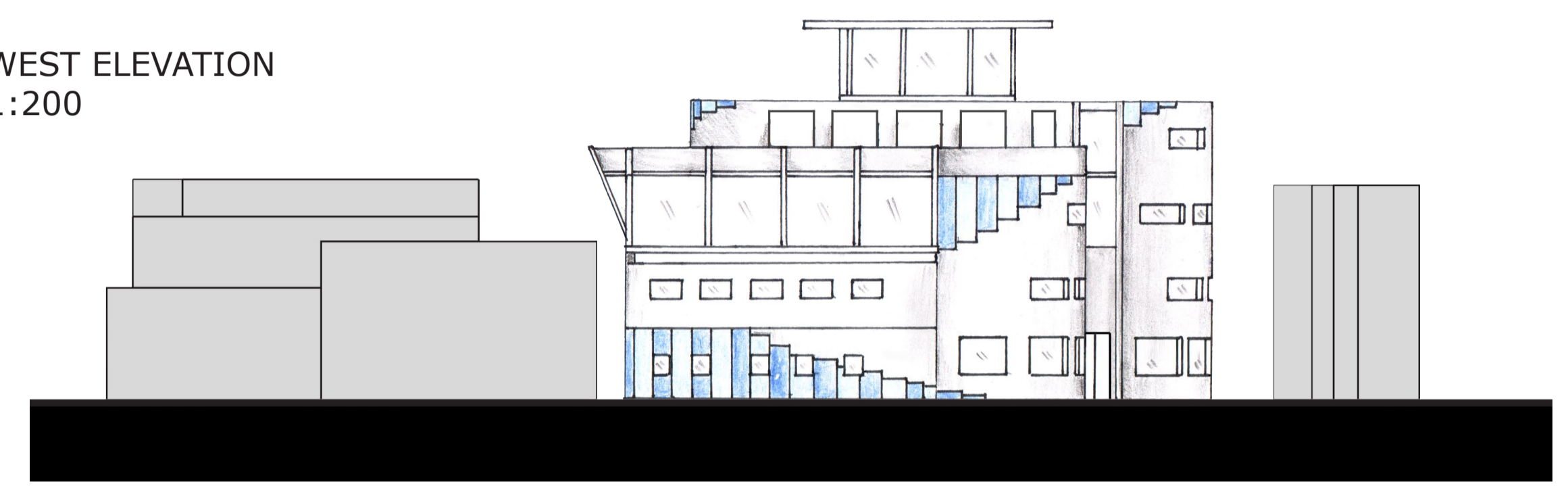


SECTION A-A
1:200

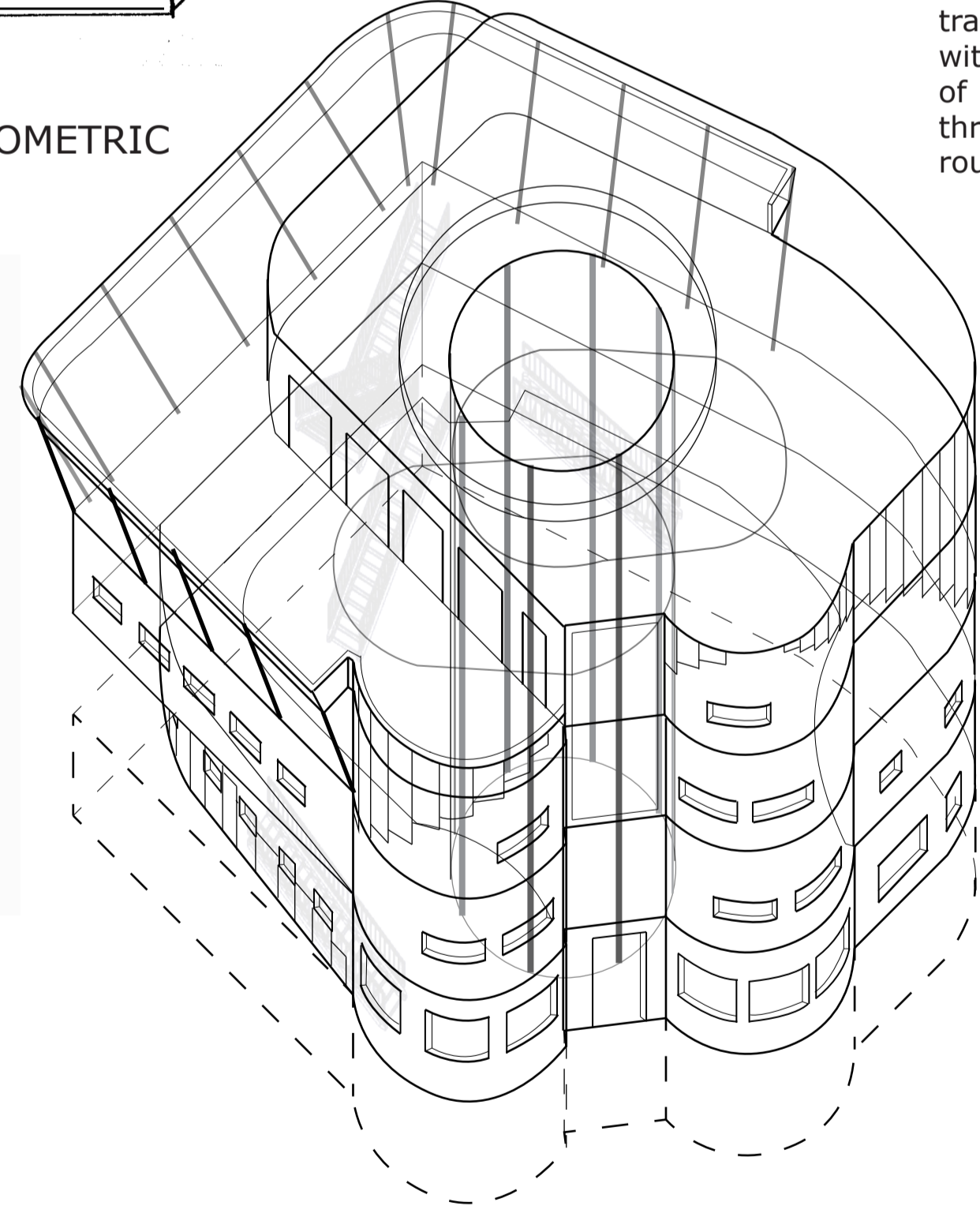


WEST ELEVATION
1:200



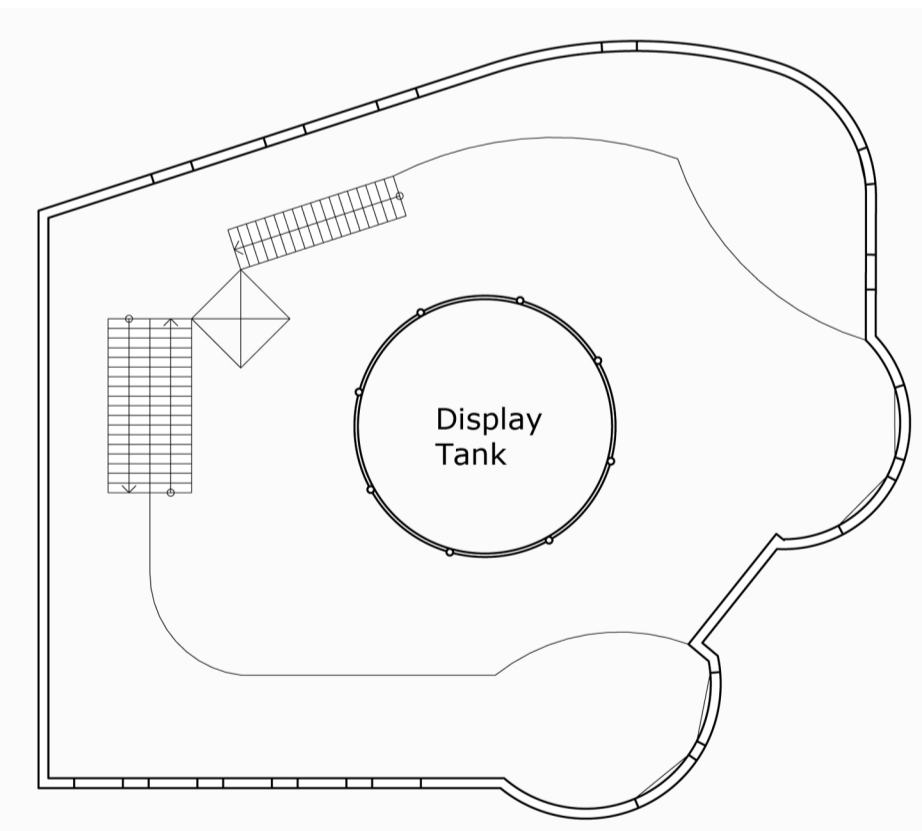
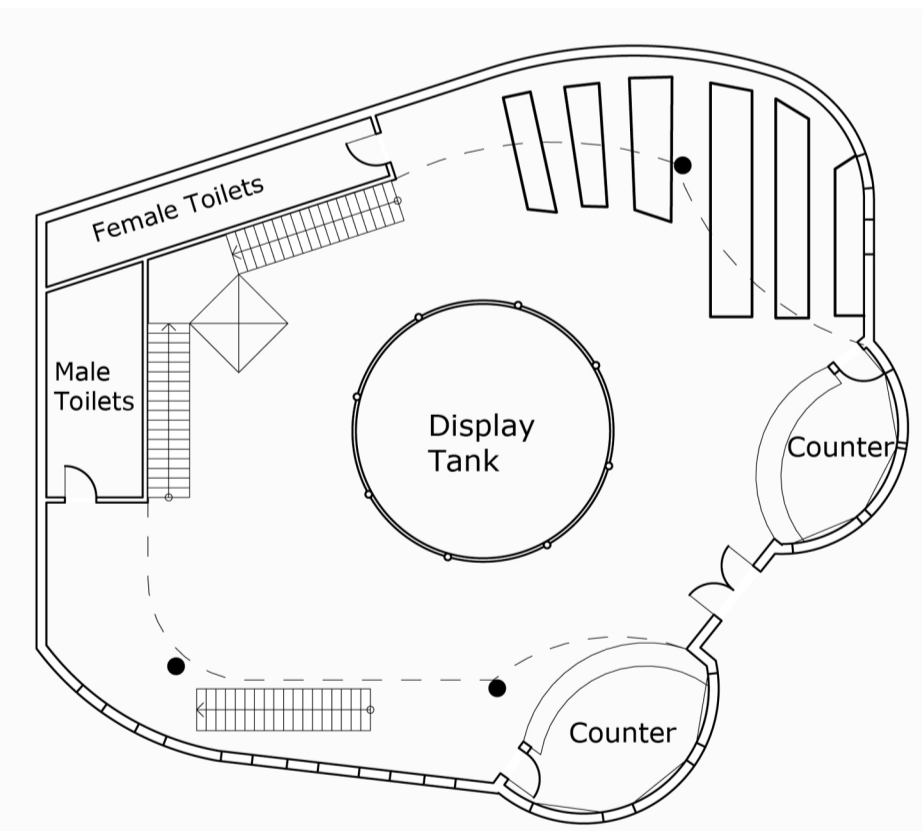
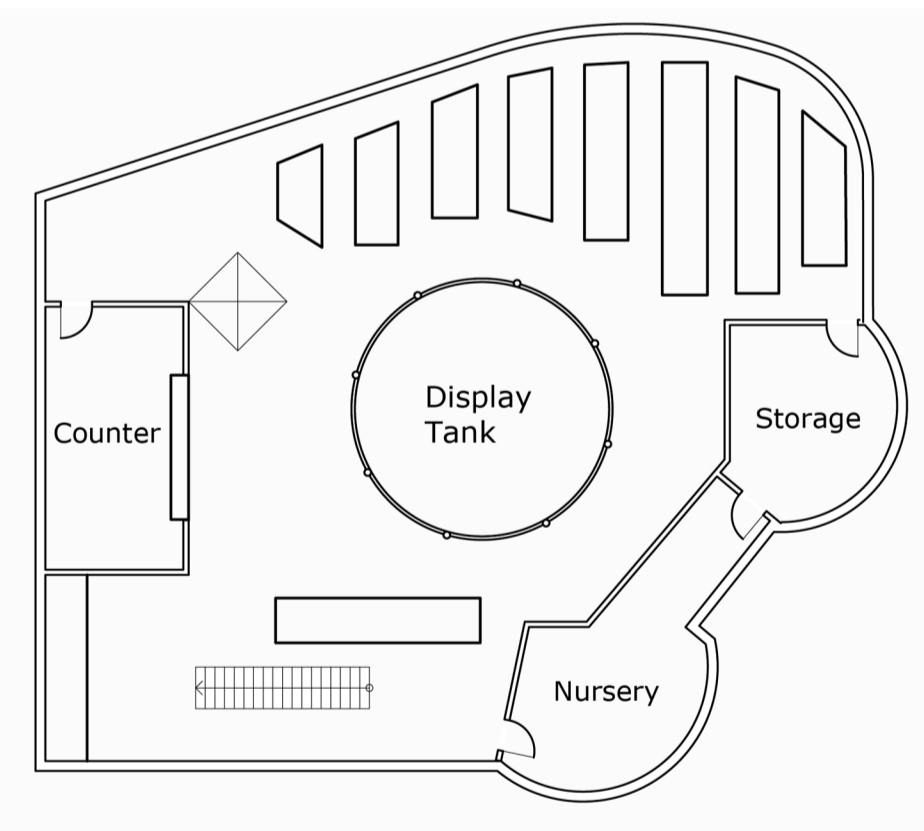
SITE PLAN
1:200

AXONOMETRIC
1:200



Tunis, the capital of Tunisia is a primary port for trade and tourism. Its economy is widely based on markets and trade. The reason that I chose to design a fish shop stemmed primarily from its location at the water side as well as the suitability of pet fish in Tunis. The residents of Tunis live in very confined and cramped conditions which disable the ability of most people to own domestic pets such as dogs and cats which not only take a lot of effort to maintain but also take space. Therefore, it seems ideal for residents to own pet fish, with small maintenance cost and use of space.

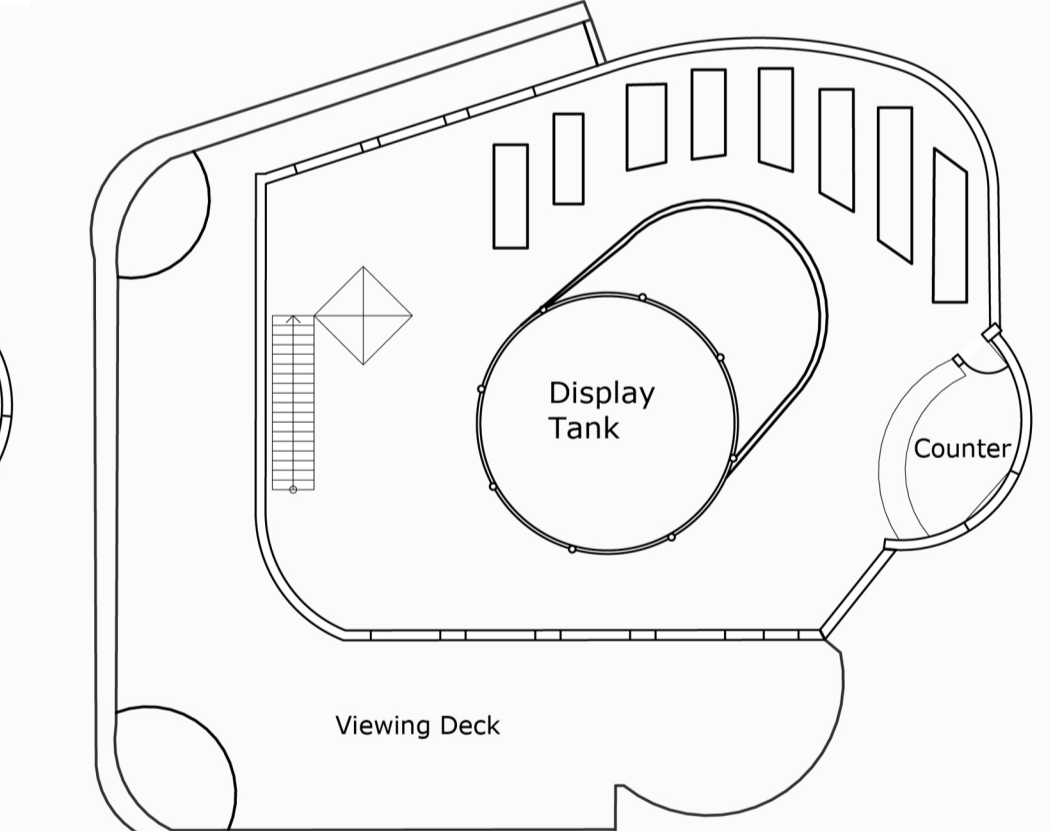
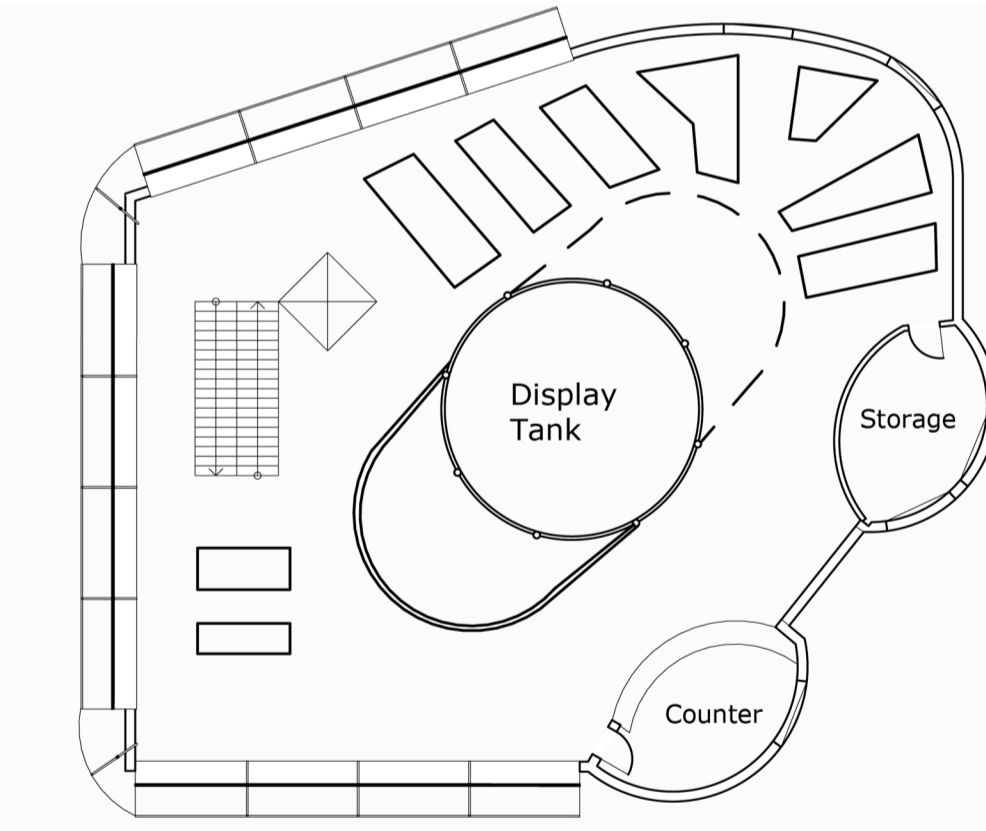
Additionally, the large 5 story fish tank which runs through the centre of the building provides a tourist attraction to the city. The tank, which spans approximately 8 metres in diameter, contains a large number of fish with different light sensitivities – the higher areas of the fish tank get more sunlight due to increasing amount of windows on upper levels. The entrance curves inwards, allowing people to become attracted into the shop through glimpsing the large fish tank. The blue cladding symbolises the waves as well as complements the surrounding buildings.



BASEMENT
PLAN 1:200

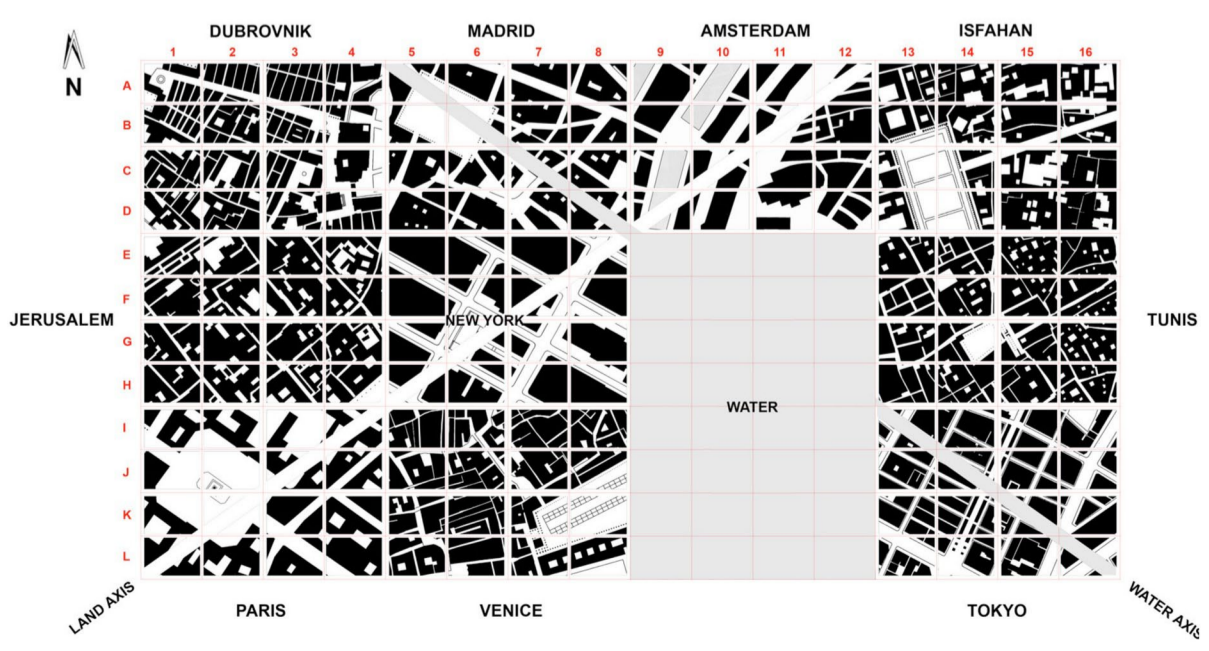
GROUND LEVEL
PLAN 1:200

FIRST FLOOR
PLAN 1:200



SECOND FLOOR
PLAN 1:200

THIRD FLOOR
PLAN 1:200



3 POSTCARD IMAGES



ALEXANDER WING-HONG YUEN
STUDENT NO. 310243238
TUNIS PET FISH SHOP/AQUARIUM