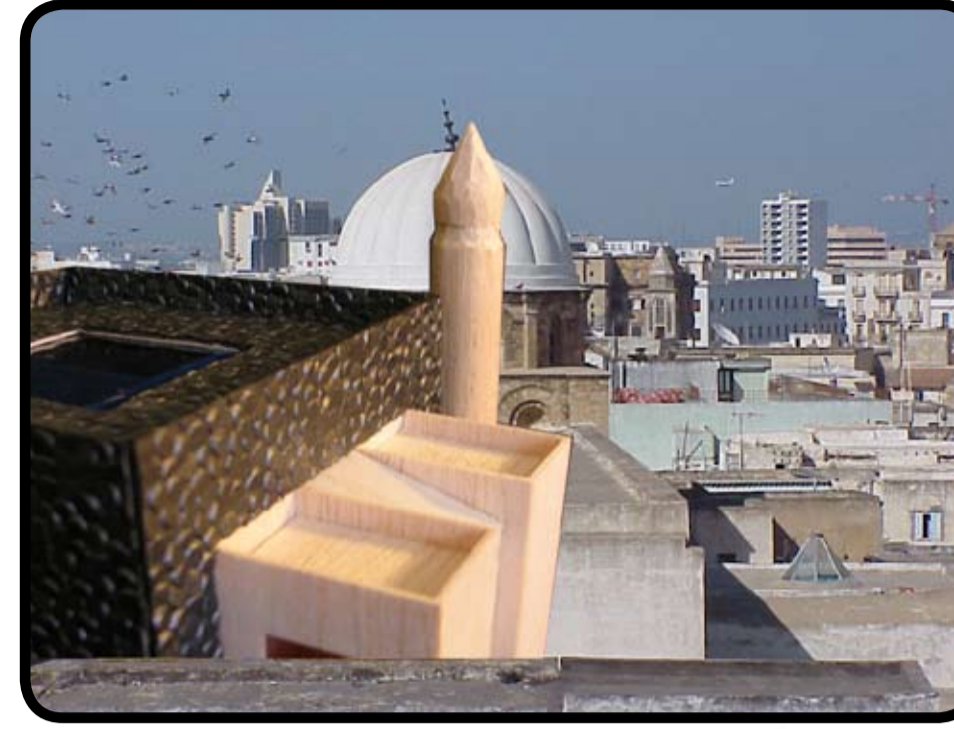
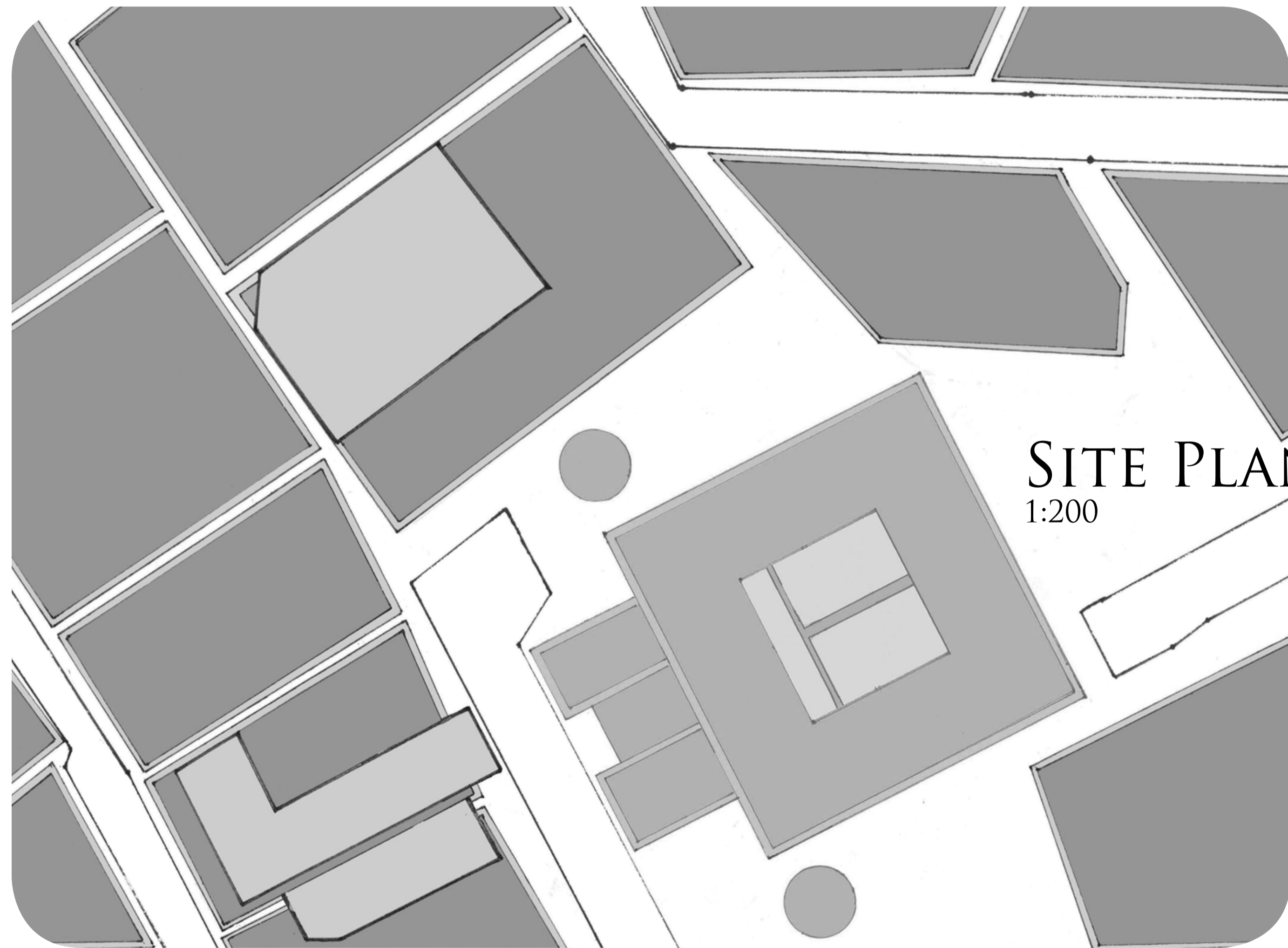


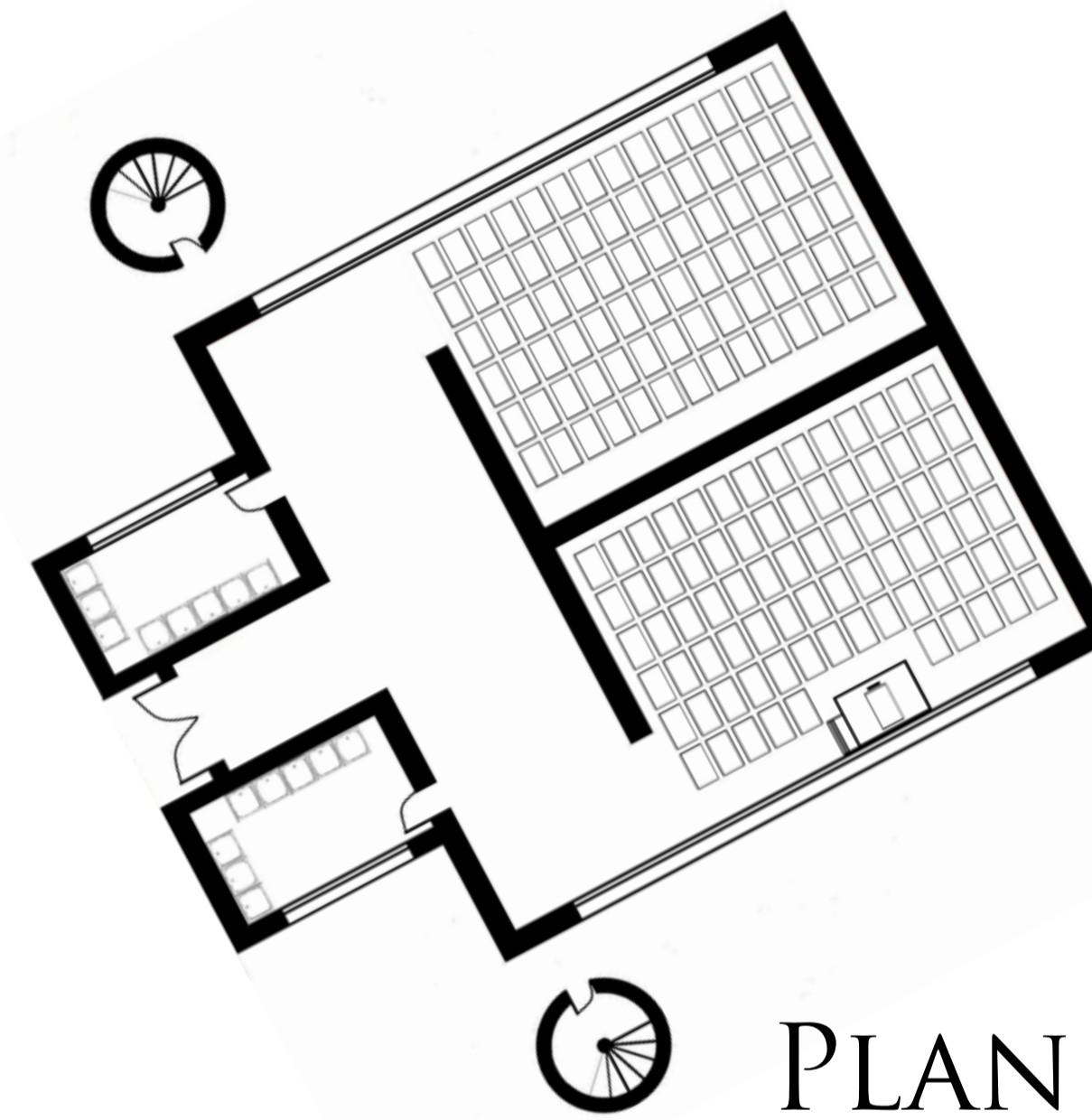
G16  
1: 10000



POSTCARD IMAGES

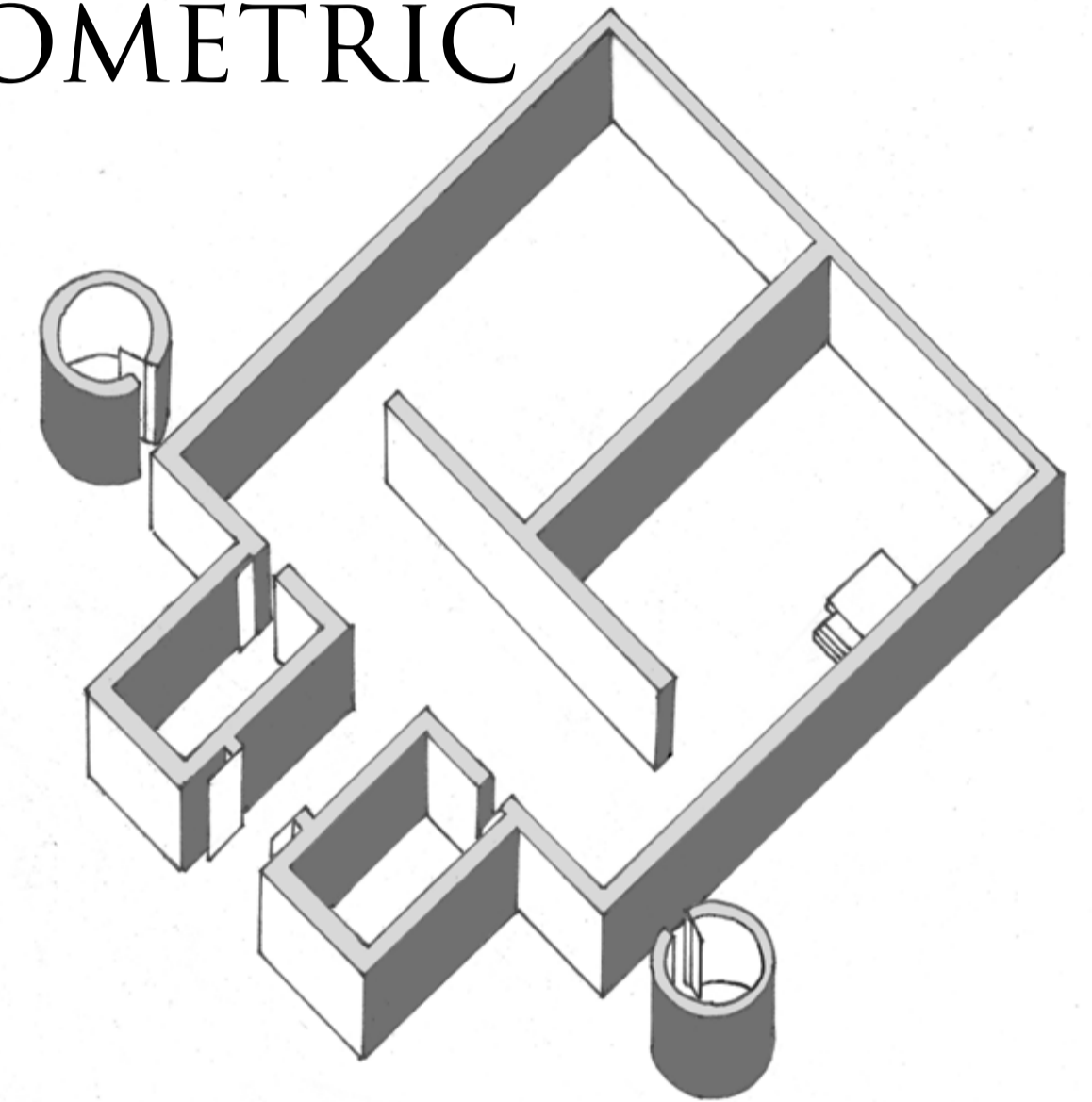


SITE PLAN  
1:200



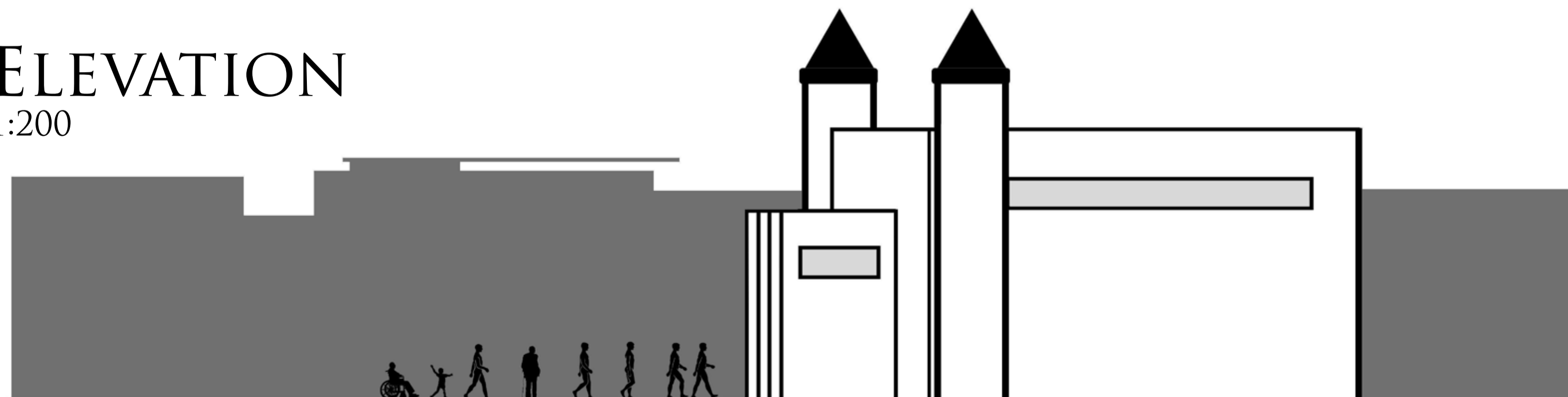
PLAN  
1:200

AXONOMETRIC  
1:200



TUNIS IS THE DENSELY AGGLOMERATED AND CULTURAL CAPITAL OF TUNISIA. SITUATED ON A LARGE MEDITERRANIAN GULF, IN THE HEART OF THE CITY LIES THE MEDINA WHICH CONTAINS MANY HISTORICAL AND MONUMENTAL MOSQUES. THESE MOSQUES ARE THE BUILDINGS WHICH BRING TOGETHER THE LOCALS IN A DAILY RITUAL OF PRAYER. MY PROPOSAL IS THUS A SIMPLE STONE MOSQUE IN A RESIDENTIAL SECTOR OF TUNIS. THE MOSQUE PROVIDES A SPIRITUAL HAVEN FOR TUNISIANS AND VISITORS ALIKE. IT IS VERSATILE, ENSURING PEOPLE OF ALL AGES AND CULTURES A CHANCE TO WITNESS THE SERMONS OF ISLAM. MINARETS ON THE SIDE OF THE MOSQUE EVOKE A SENSE OF SYMMETRY, VITAL TO ISLAMIC ARCHITECTURE, AND FUNCTION AS STORAGE FACILITIES. THESE TOWERS ARE RISEN ABOVE THE SURROUNDING BUILDINGS TO GIVE A SENSE OF POWER AND SPIRITUALITY.

ELEVATION  
1:200



SECTION  
1:200

