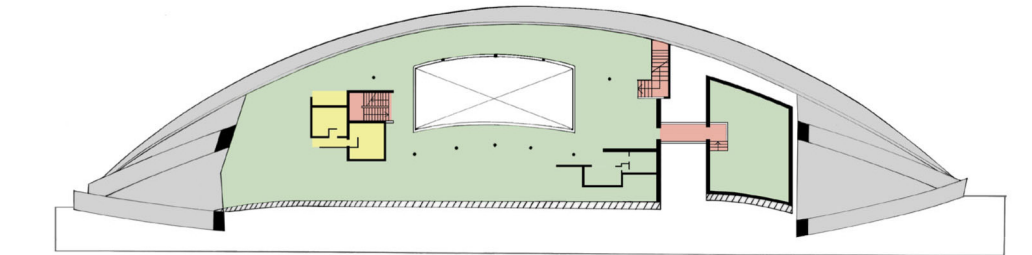


Teracom Studio is a broadcasting substation for Sweden's government-owned, national broadcasting network. Situated in Stockholm's renown Galma Stan region, it arches over a main road and canal that separates the Swedish Royal Palace and the House of Parliament.

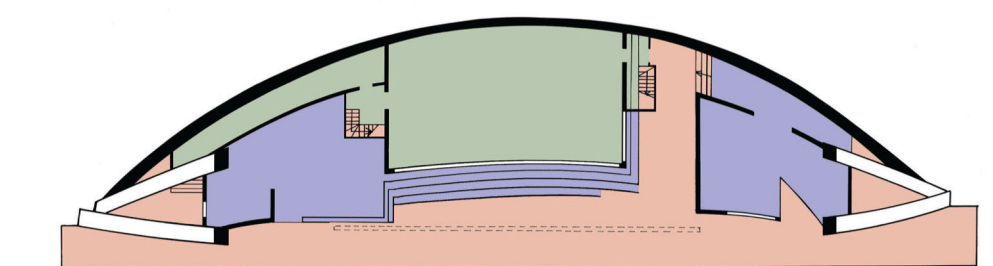
At ground level, the station acts a large covered pavillion with two 24-hour cafe/bars open to the public. The main studio is also located on the ground floor, behind triple glazed glass for the interested to view live broadcasts. Office space for administrative, pre-production, and post-production work are located on the second and third levels.

The station's main attraction is an external, retractable, large screen that is attached to the forefront structural arch and comes down to the deck where it is anchored. Viewing may be done from the amphitheater opposite. From this screen, special events are projected for the city to behold.

On a typical day, when the large screen is tucked away, the 2nd floor facade serves as one long LCD for all sorts of news, financial reports, stocks, etc.

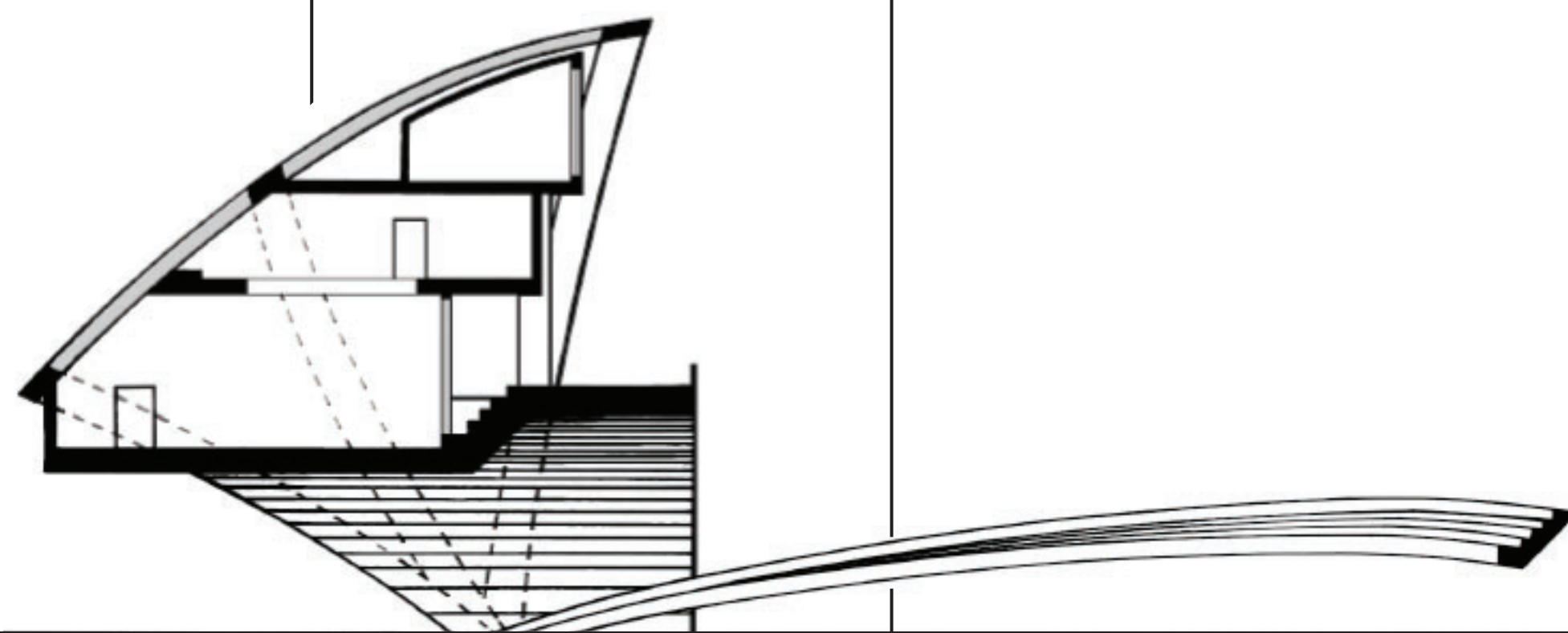


2nd Floor Plan

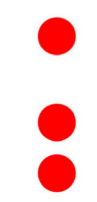


Ground Floor Plan

PRIVATE
PUBLIC
CIRCULATION
SERVICES
CLADDING



TERACOM studios



Janine Manzana 308093585