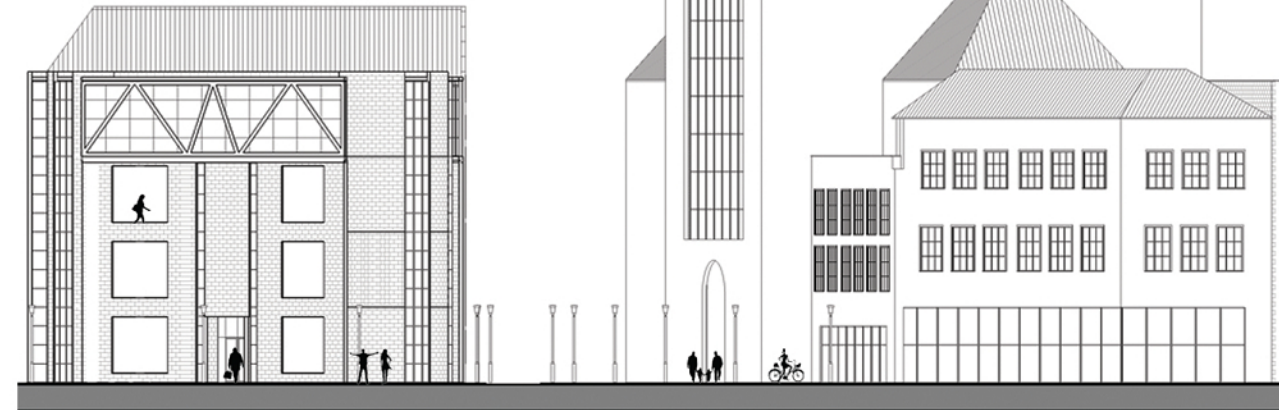
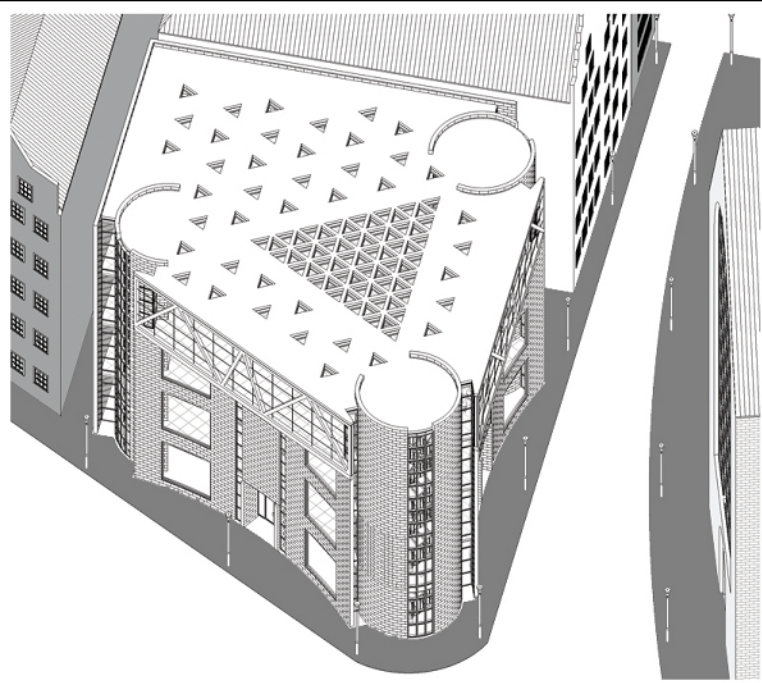


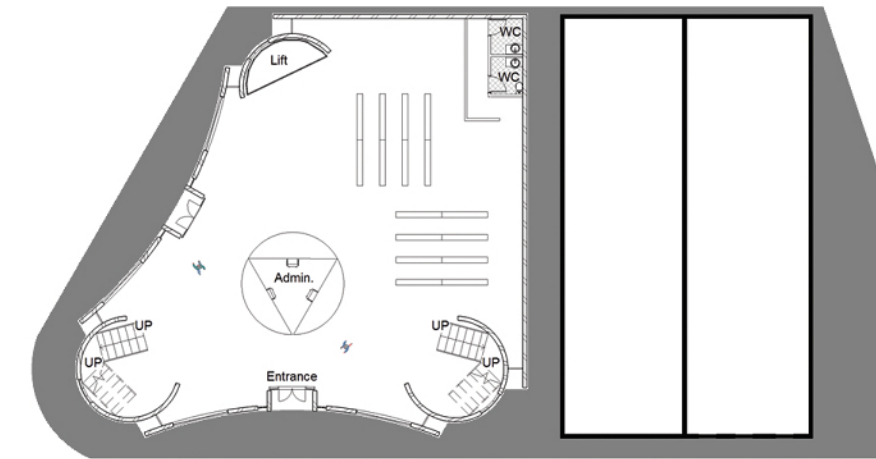
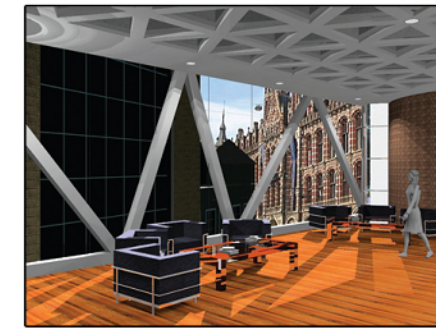
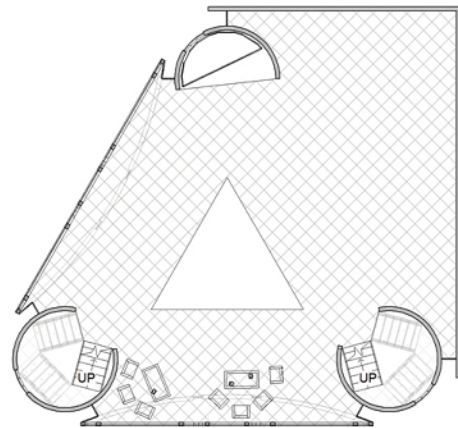
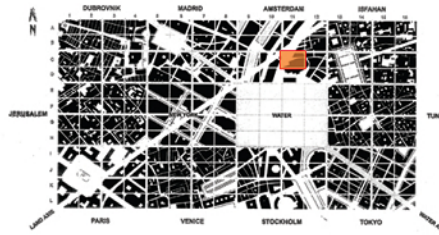
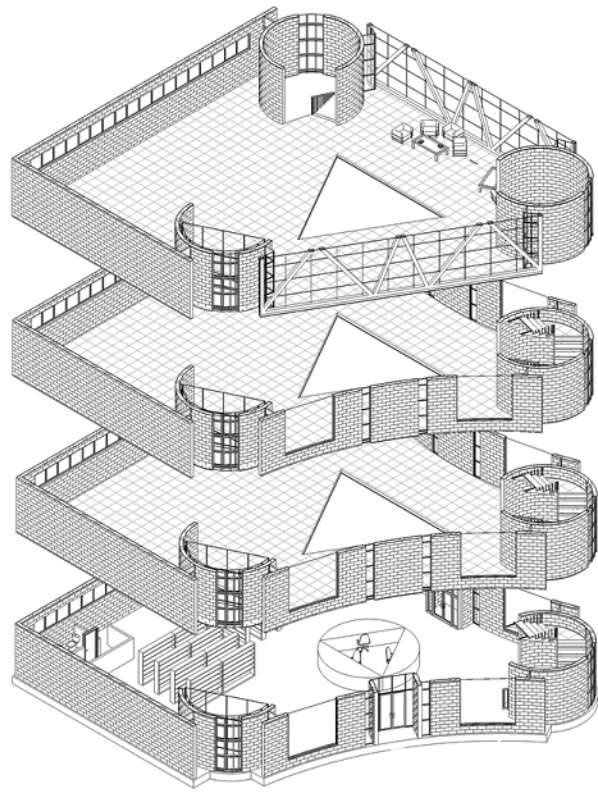
# AMSTERDAM LIBRARY (C11)

The library is located opposite Dam Square and the Magna Plaza in Amsterdam. The building is designed with the intention to act a social area during the day for the large number of backpackers who frequent the area.

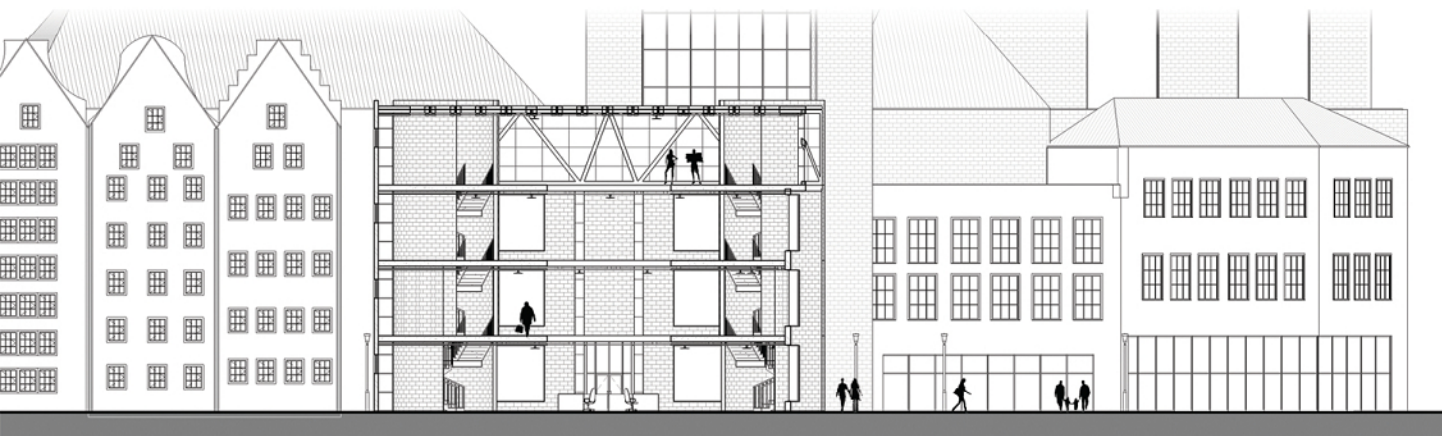
The building is constructed from the brickwork which typifies Amsterdam's architecture, with a concaved façade designed to draw people into the building and bring life to a corner which is quiet. The top level of the library will contain a coffee shop and book store where backpackers can meet and enjoy views to Amsterdam's historical centre. The trussed upper level adds a modern feel to the building in a city that is rapidly progressing in the 21st century.



West Elevation



Plans



Section

