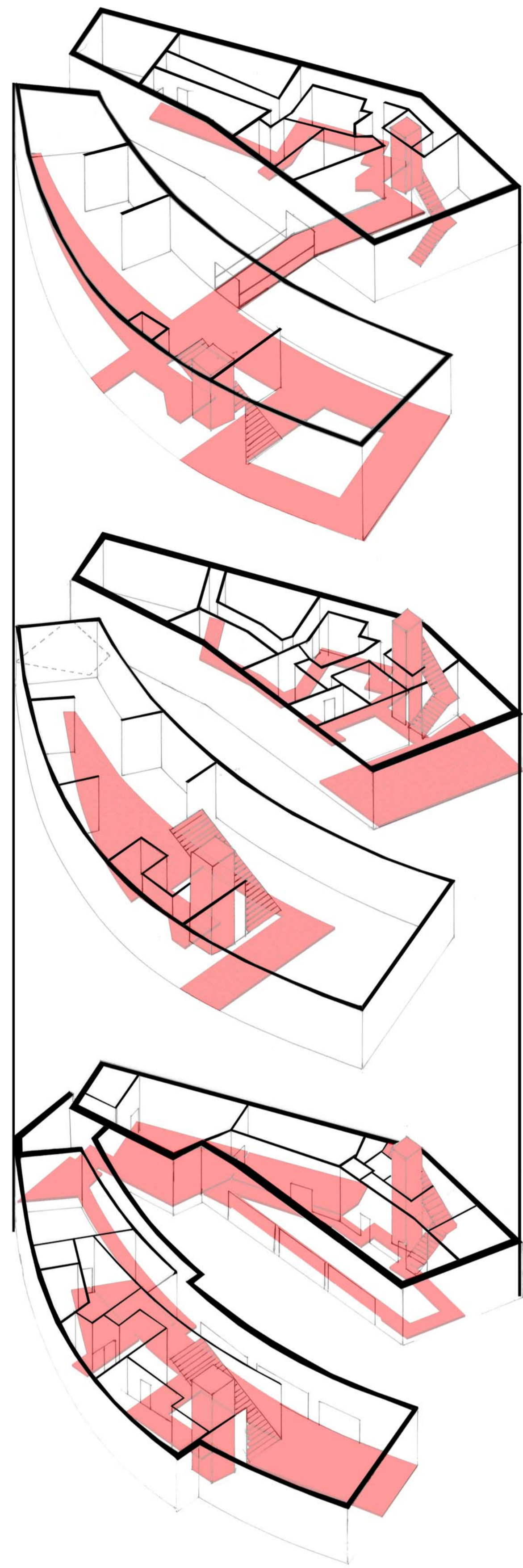


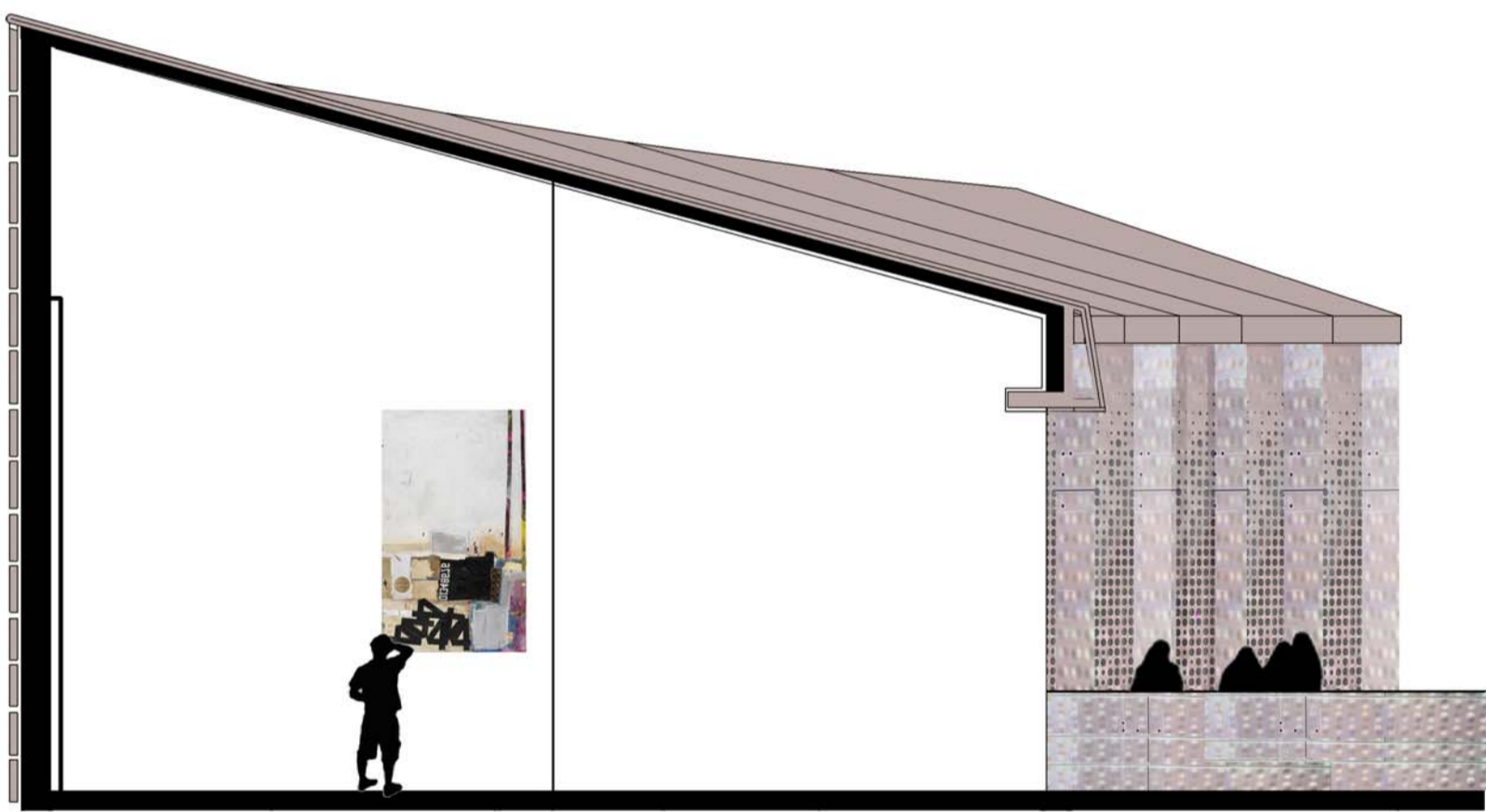


HOPE DRYDEN
S.I.D 309234301
C15

THE MUSEUM OF ISFAHAN IS A PLACE WHERE EASTERN AND WESTERN CULTURES ARE BROUGHT TOGETHER. BEING DRAWN TO THE BUILDING YOU EMBRACE THE SENSE OF A SANCTUARY, FROM THE BUSY MAIN ROAD INTO A PEACEFUL SCULPTURAL GARDEN. AS EXPLORING THESE THESE BUILDINGS YOU ARE ABLE TO SENSE THE DISTINCTION BETWEEN THEM, FROM OPEN SPACES INTO A MAZE OF CLOSED HALLWAYS.



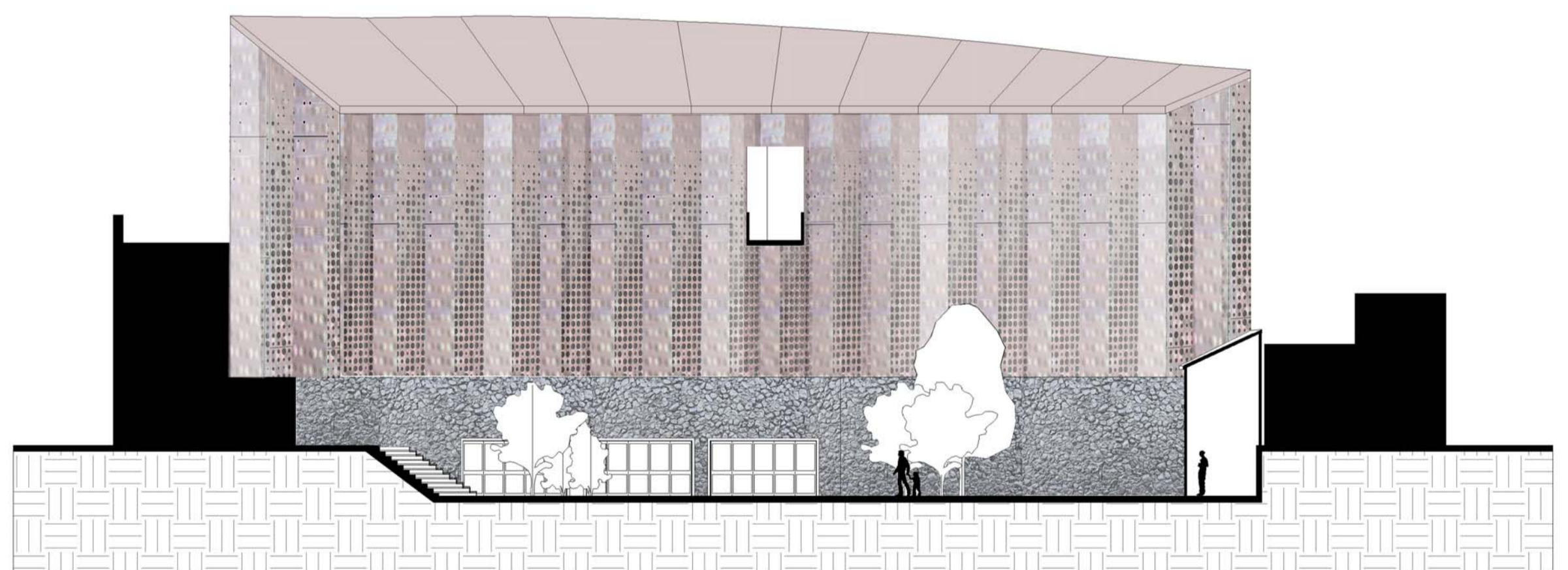
EXPLODED AXONOMETRIC SHOWING CIRCULATION 1:200



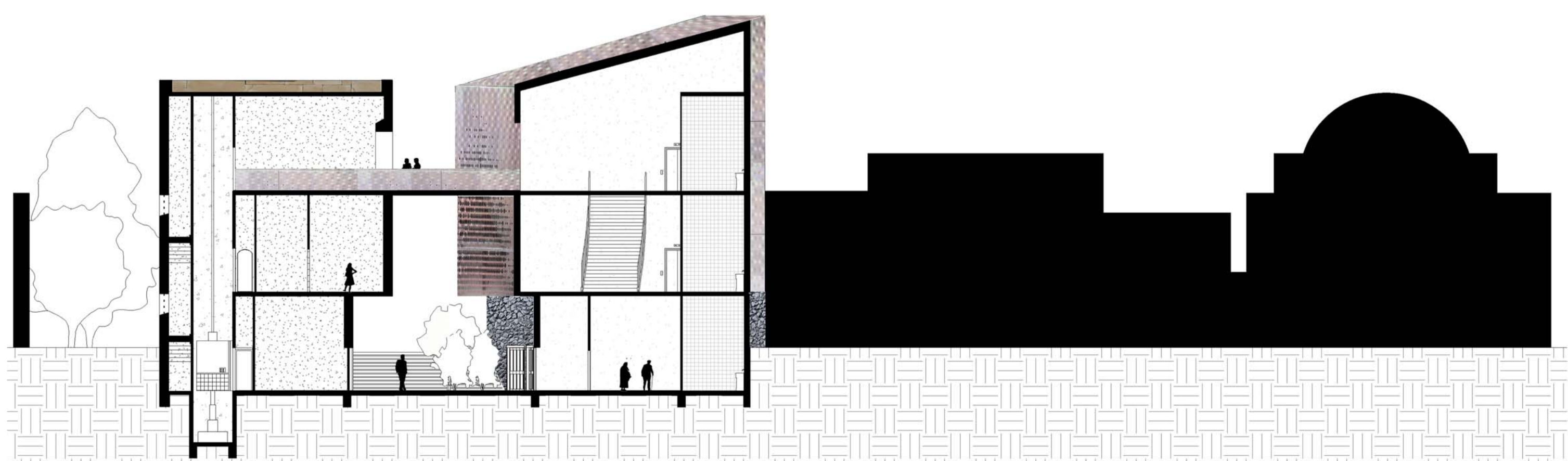
DETAIL OF CONTEMPORARY SIDE 1:75



DETAIL OF TRADITIONAL SIDE 1:75



SECTION 2 THROUGH COURTYARD 1:200



SECTION 1 THROUGH SITE 1:200