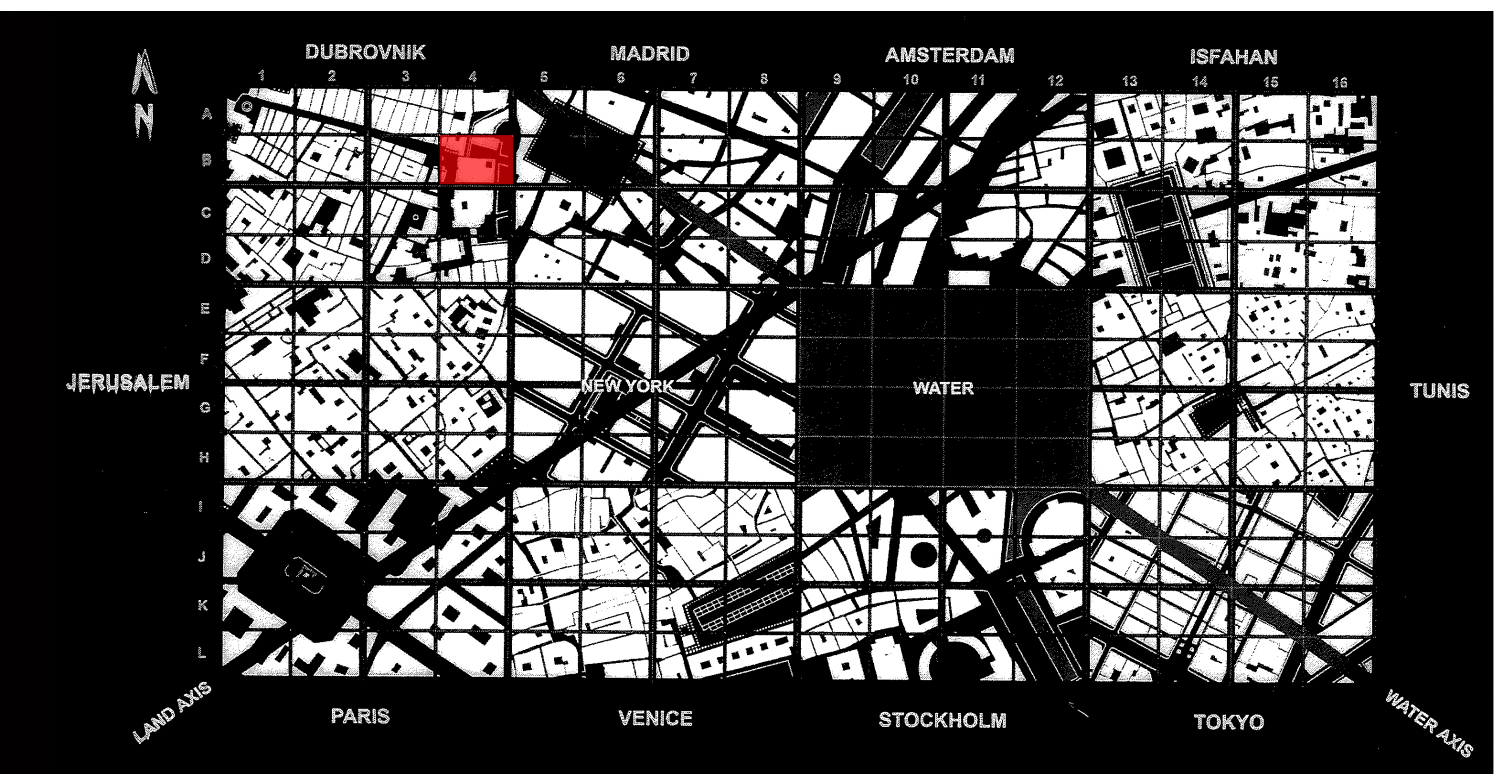


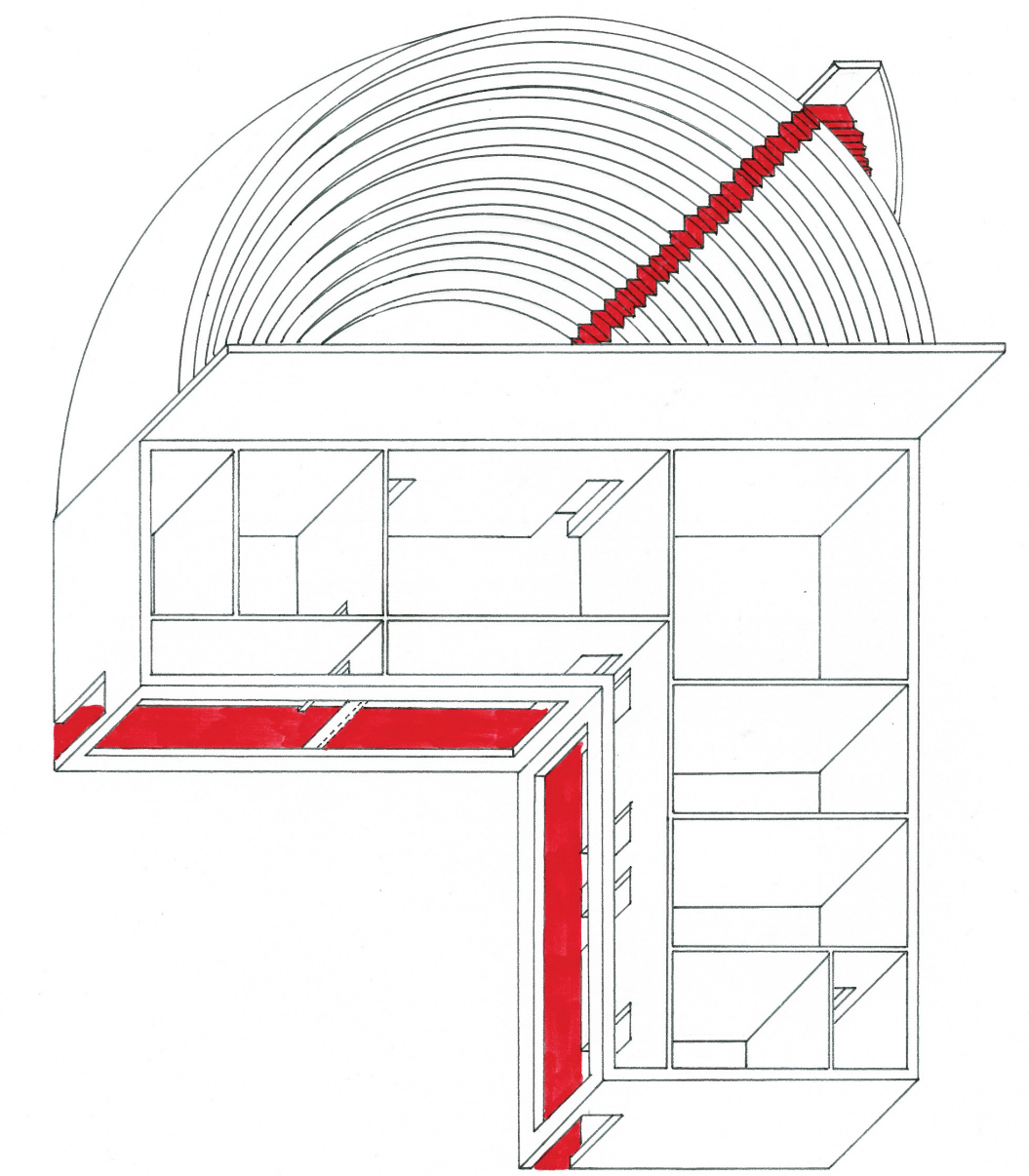
# AMPHITHEATRE OF DUBROVNIK

**NAME: HOLLY LIM**  
**SID: 309190967**  
**BLOCK REFERENCE: B4**

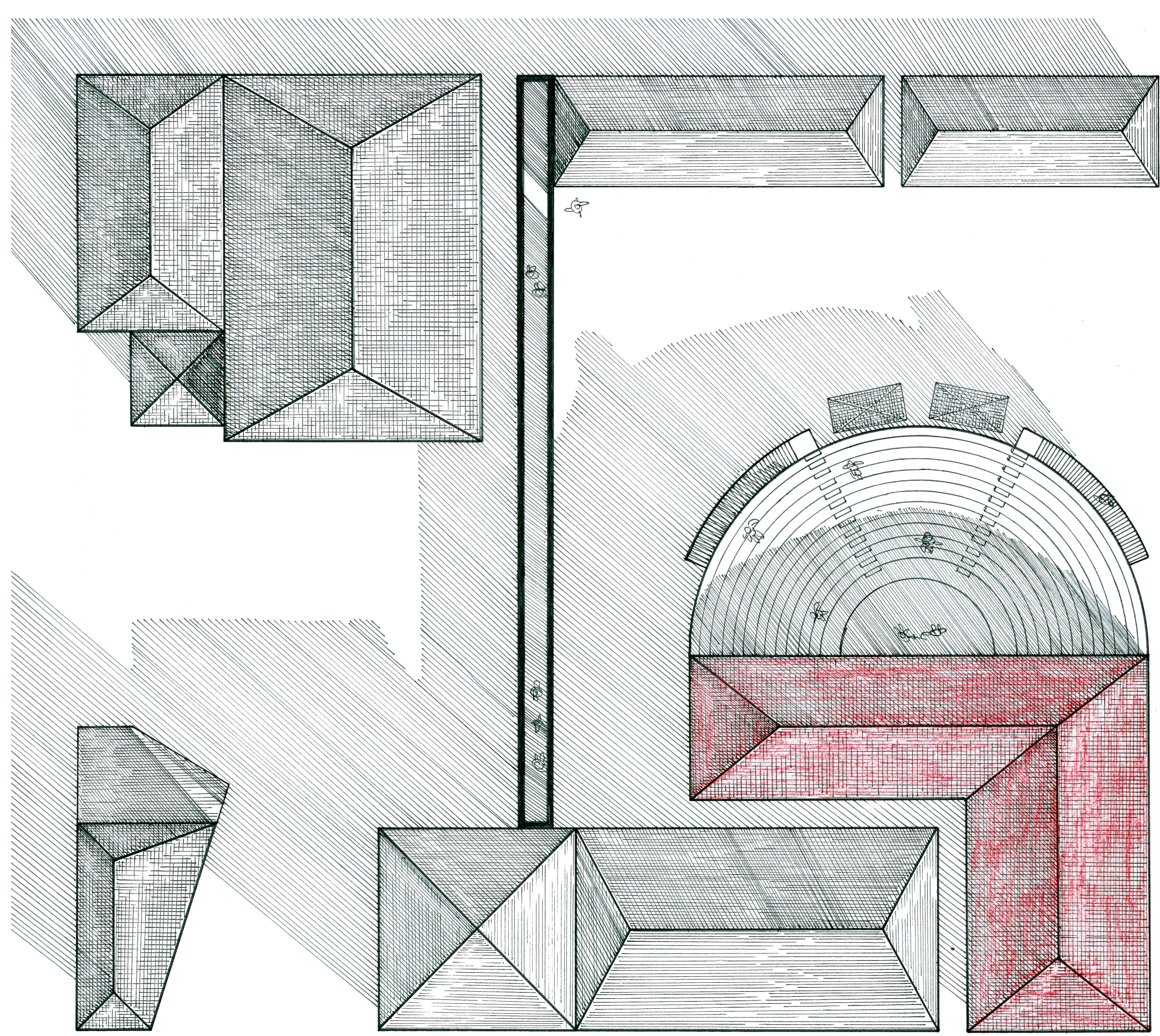


Upon the Eastern shores of the worn sandstone city of Dubrovnik lies a salt-encrusted gem, nestled safe in seclusion within the crumbling city walls, worthy of ancient festivities. Inspired by the annual Dubrovnik Carnival, the Amphitheatre of Dubrovnik marks itself as a Theatre of Escape, reflecting the playful atmosphere that only a Masquerade may bring: men and women and children alike prowling the old city streets, swathed in heavy fabrics, dripping in summer warmth, singing and dancing and laughing in merriment; traditions of a time when everything is allowed – when people may shroud themselves in mystery, and grandeur – where known identities are forgotten, and true selves brought forth. Where people become who they want to be.

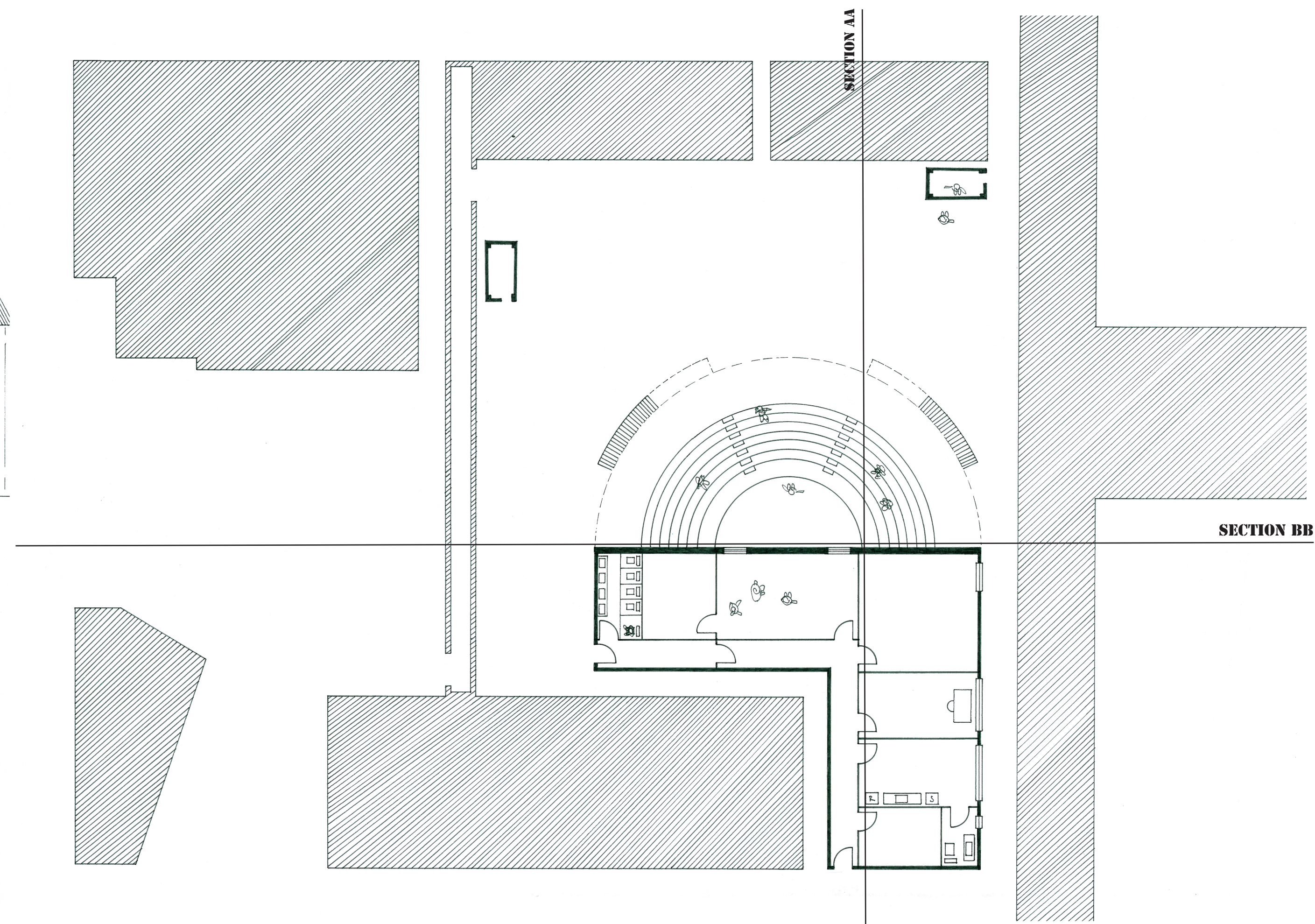
Music, theatre and dance have always been a defining characteristic of Dubrovnik. The Amphitheatre serves as an ambiguous space of life – the stage a nurturer of action and romance, of comedy and tragedy, of turbulent waves of thought and emotion – with the primary aim of captivating audiences in the fantasies of playwrights passed. Its charming dockside setting allows gusts of fresh salty air from the Adriatic to settle over the Theatre's whitewashed sandstone steps, warm and heavy, awaiting yet another performance where people live and forget, and get lost in a world of imagination.



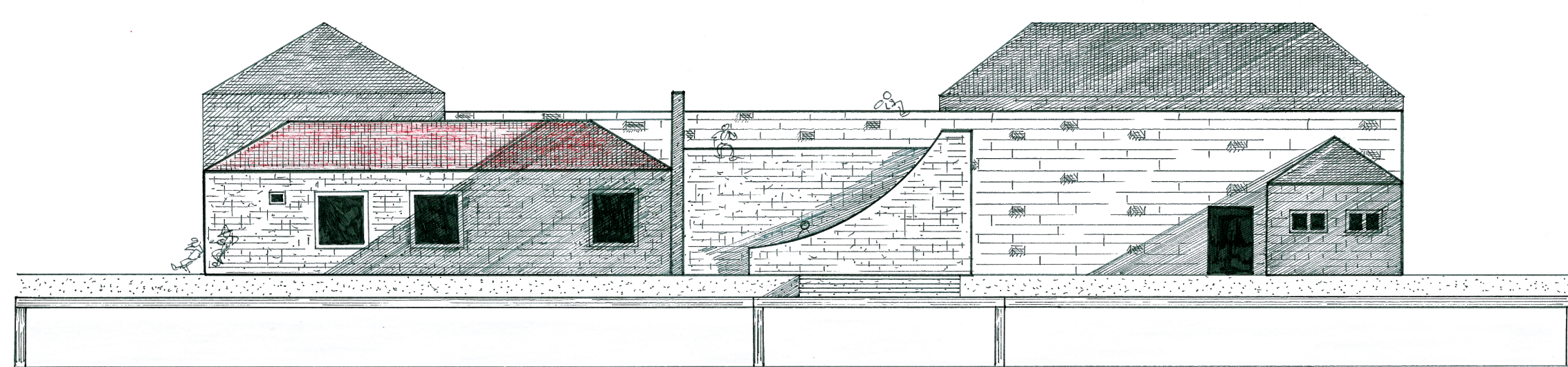
**AXONOMETRIC (1:200)**



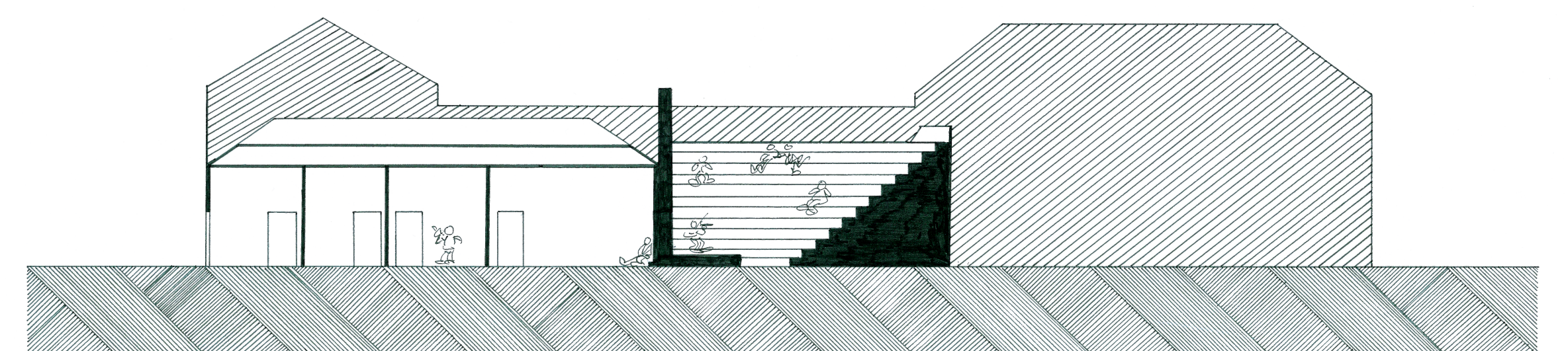
**AERIAL PLAN (1:200)**



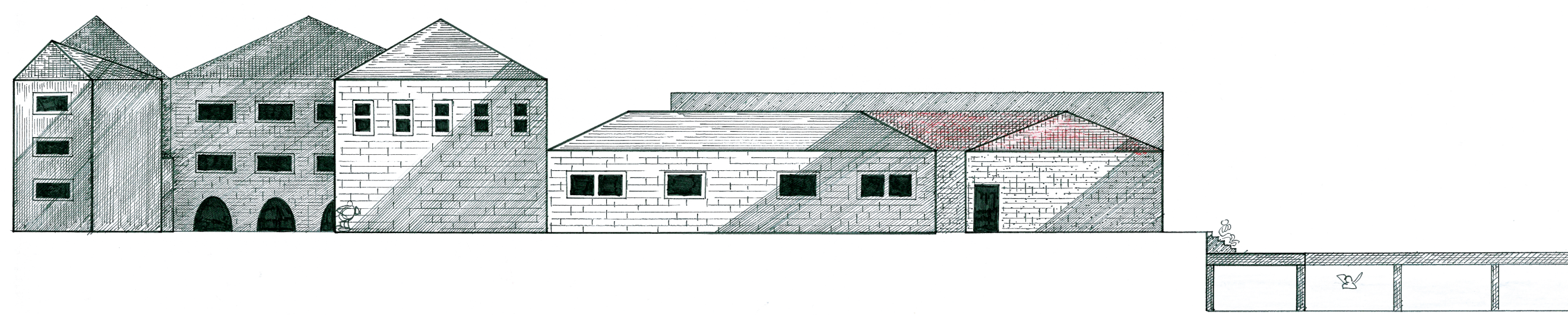
**FLOOR PLAN (1:200)**



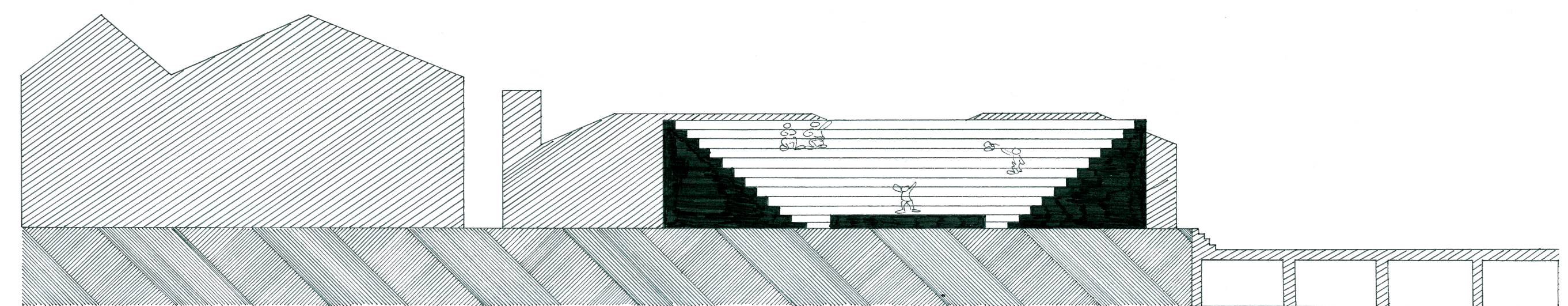
**EAST ELEVATION (1:200)**



**SECTION AA (1:200)**



**SOUTH ELEVATION (1:200)**



**SECTION BB (1:200)**

