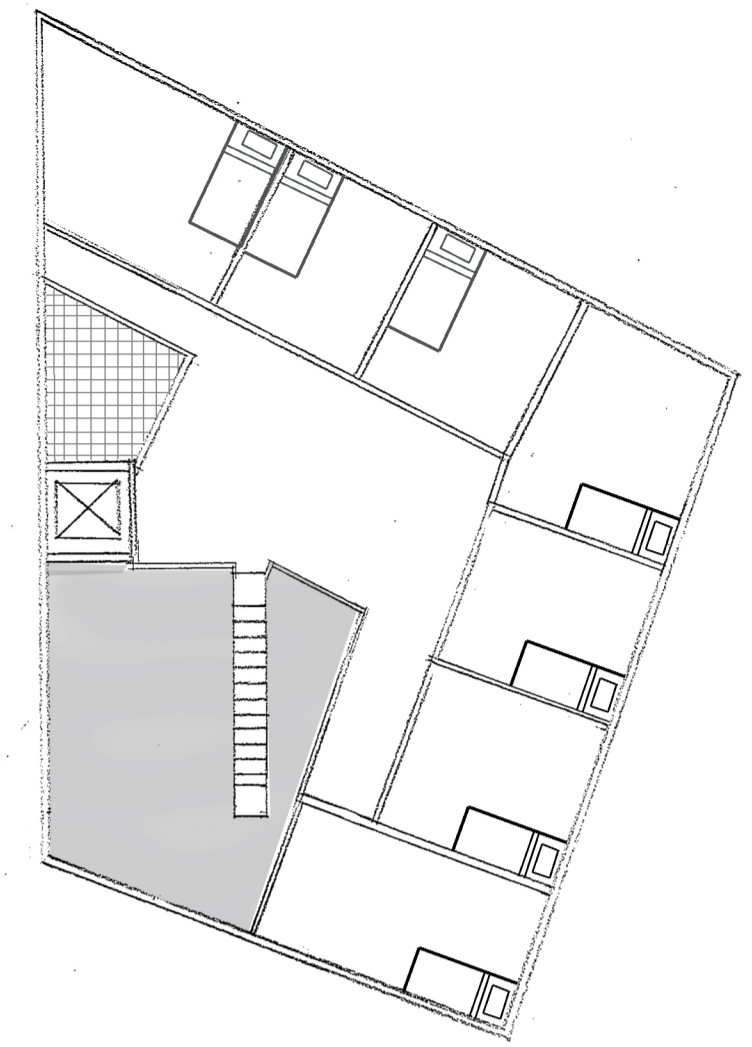


AXONOMETRIC

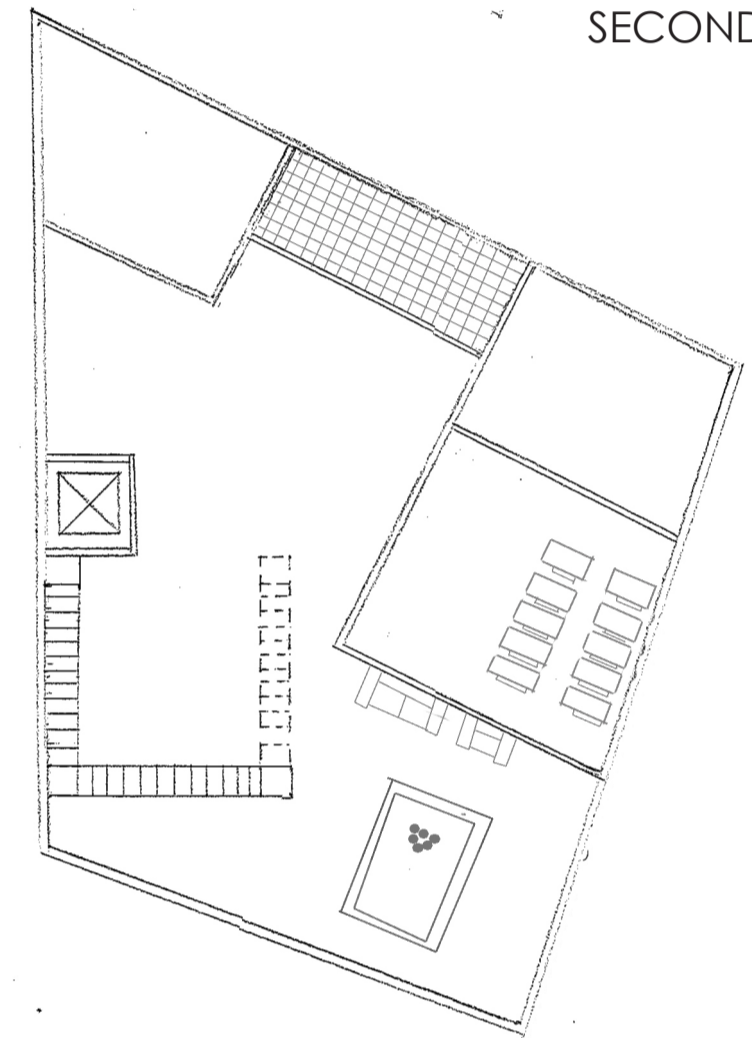
THE CITY OF AMSTERDAM IS DENSELY PACKED AREA, FILLED WITH CULTURE AND UNIQUE ARCHITECTURAL IDENTITY. THROUGH THE EYES OF A STUDENT IN A FOREIGN LAND, THIS INTERNATIONAL BOARDING SCHOOL PROVIDES NOT ONLY EDUCATION AND ACCOMODATION, BUT ALSO COMFORT AND THE QUALITY OF HOME , FIT SECURELY WITHIN A BUSY CITY BLOCK.

IN ORDER TO MAXIMISE NOT ONLY SPACE, BUT ALSO ITS POTENTIAL, THE BUILDING CANTILEVERS OVER THE PEDESTRIAN ACCESSWAY, ALMOST INTERACTING WITH THE ACTIVITIES OCCURING BELOW ITS REACH.

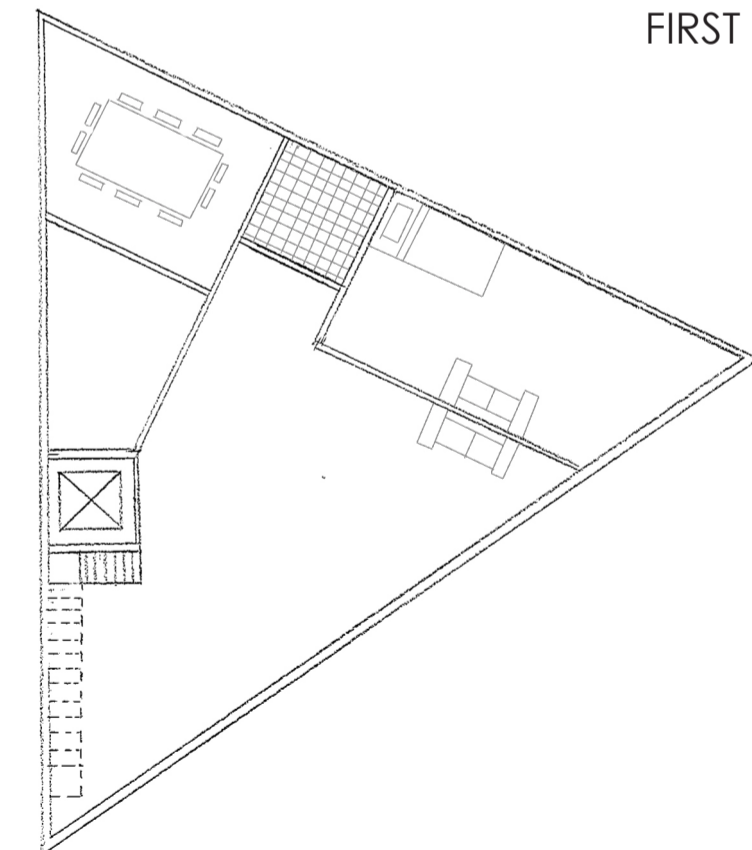
THE BUILDING OFFERS UNIQUE GEOMETRY, ACCOMPANIED BY THE TRADITIONAL STYLE OF AMSTERDAM, IN AN ATTEMPT TO FIT IN WITH ITS SURROUNDINGS WHILST MAINTAINING ITS ORIGINAL IDENTITY.



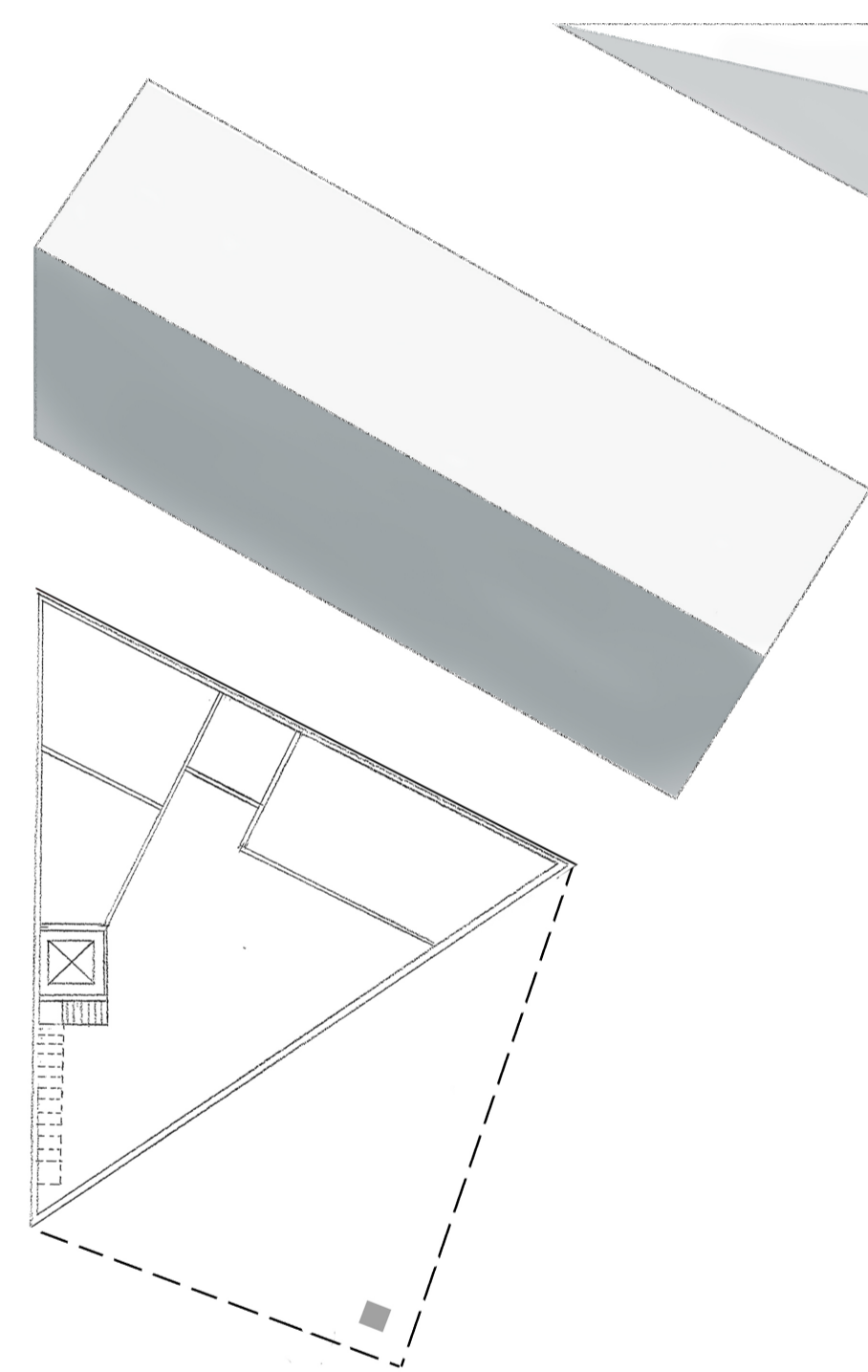
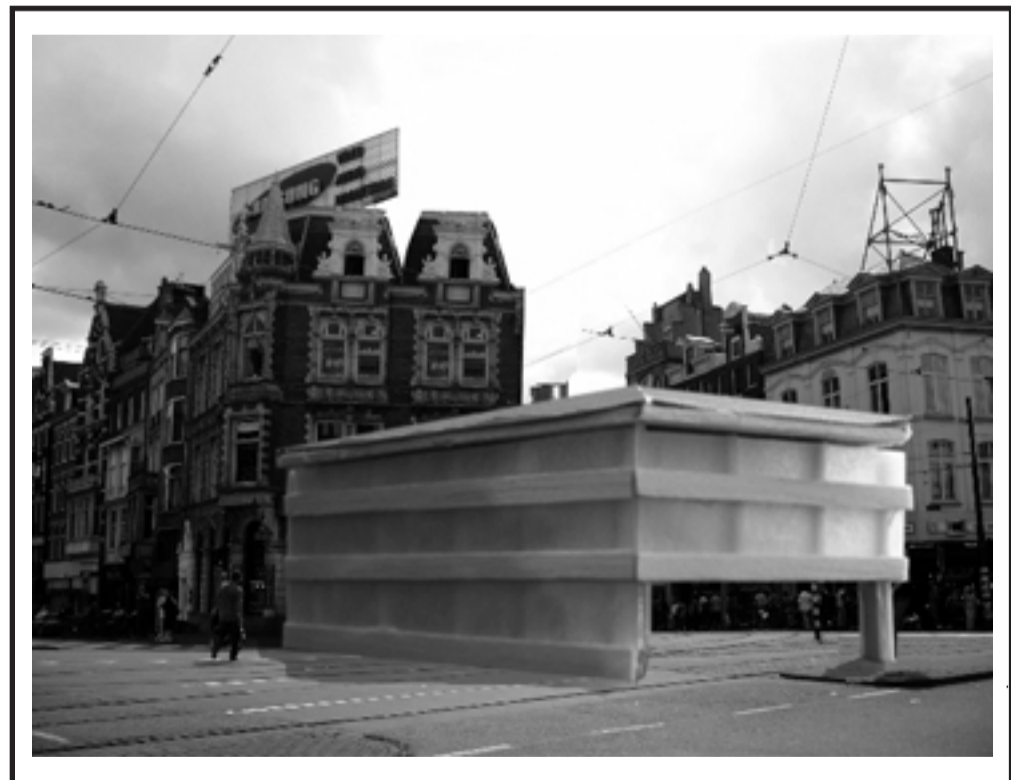
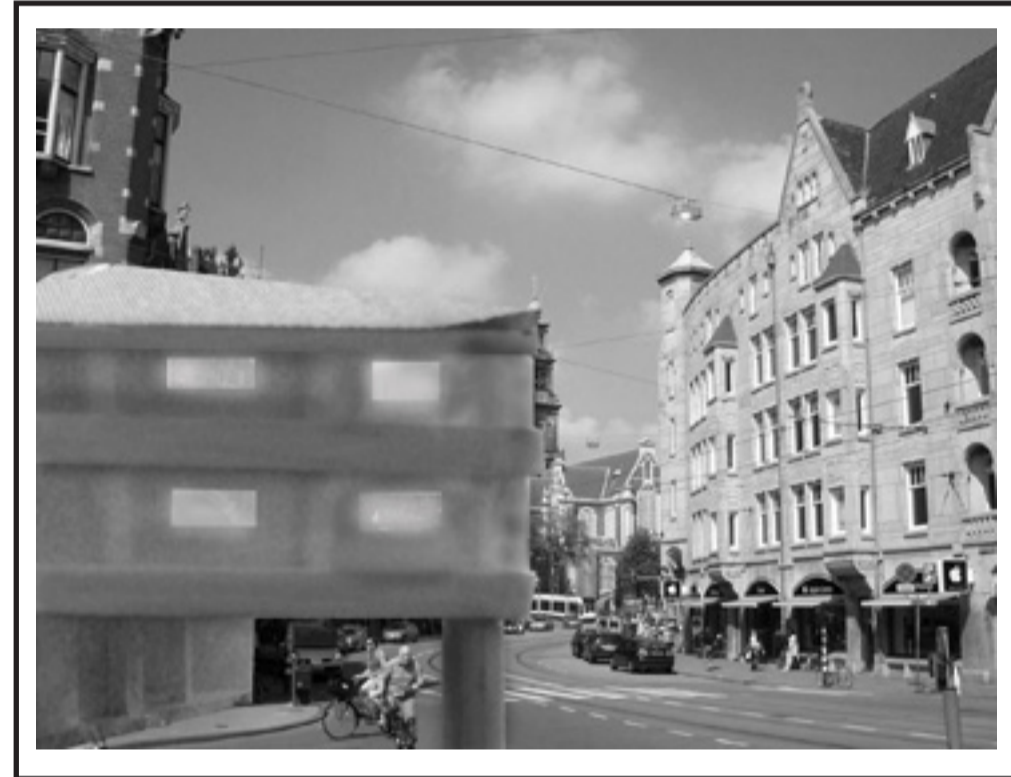
SECOND FLOOR 1:200



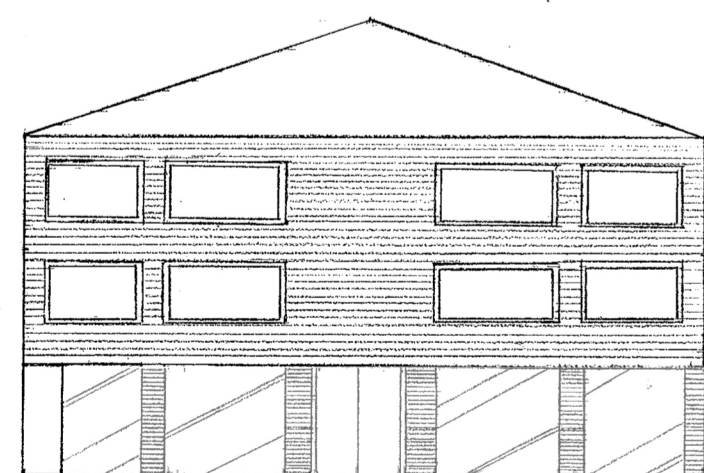
FIRST FLOOR 1:200



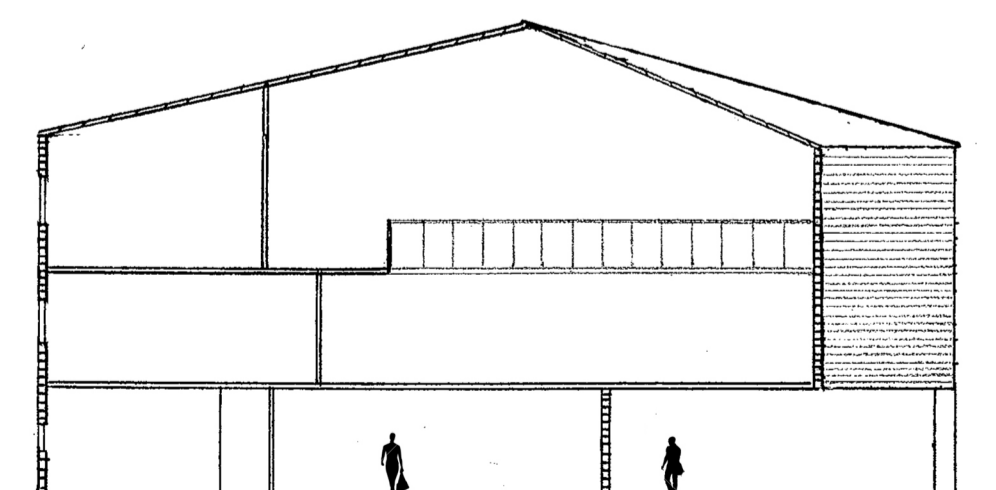
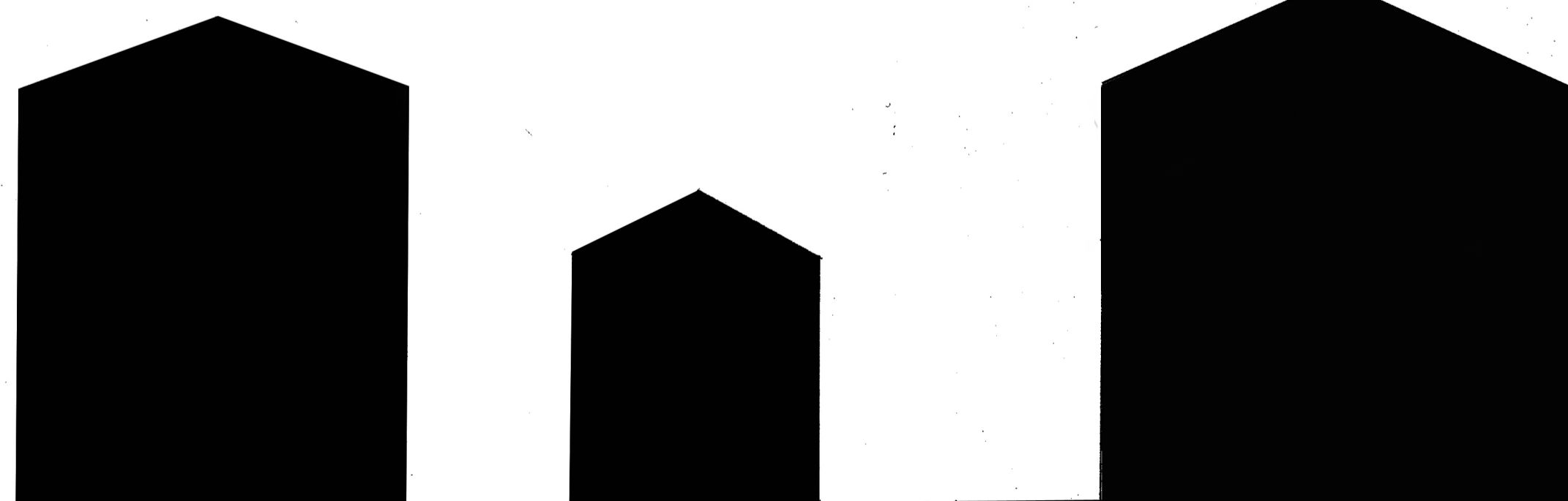
GROUND FLOOR 1:200



SITE PLAN



ELEVATION 1:200



SECTION 1:200