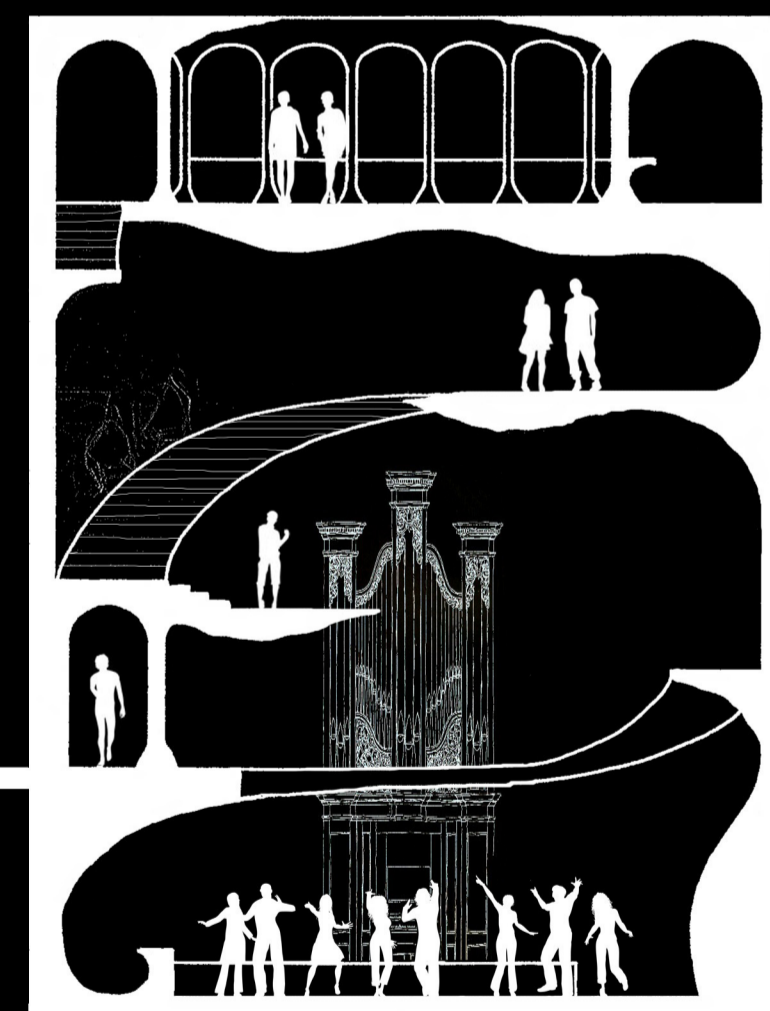


Voids in the floor plates create a sense of balance between the separation of different functional zones and unity between them. A centralised electronic organ rises from the stage, enhancing the sense of unity within the space, as well as providing a unique instrument to accompany DJs and artists. Circulation encompasses the perimeter of the building in order to centralise light, sound and movement: the components of primary space. A separate staff circulation lift allows for efficient transportation of goods and waste between levels.

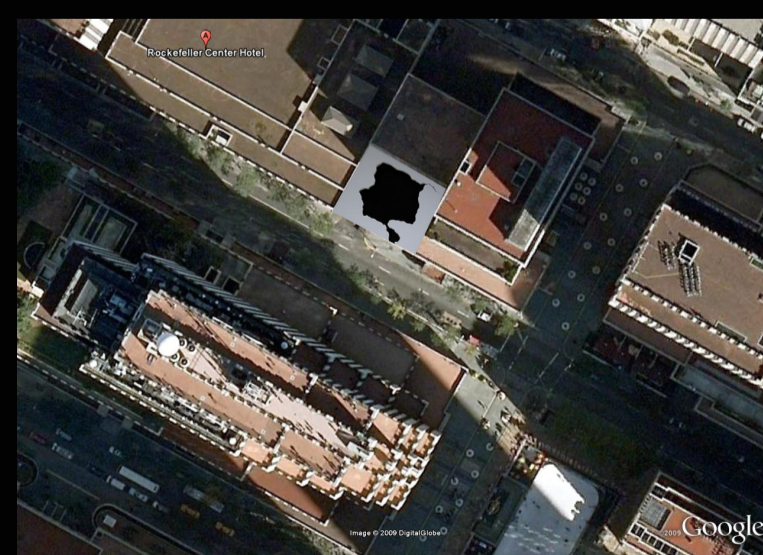
\\Axonometric

\\Images

My night club is very much about the experience. The visitors are an integral part of my design; it needs direct interaction, for the visitor to participate and become a part of the work. So much depends on the tactile sensations, and, without the element of time, the experience is not easily reduced to a set of images.

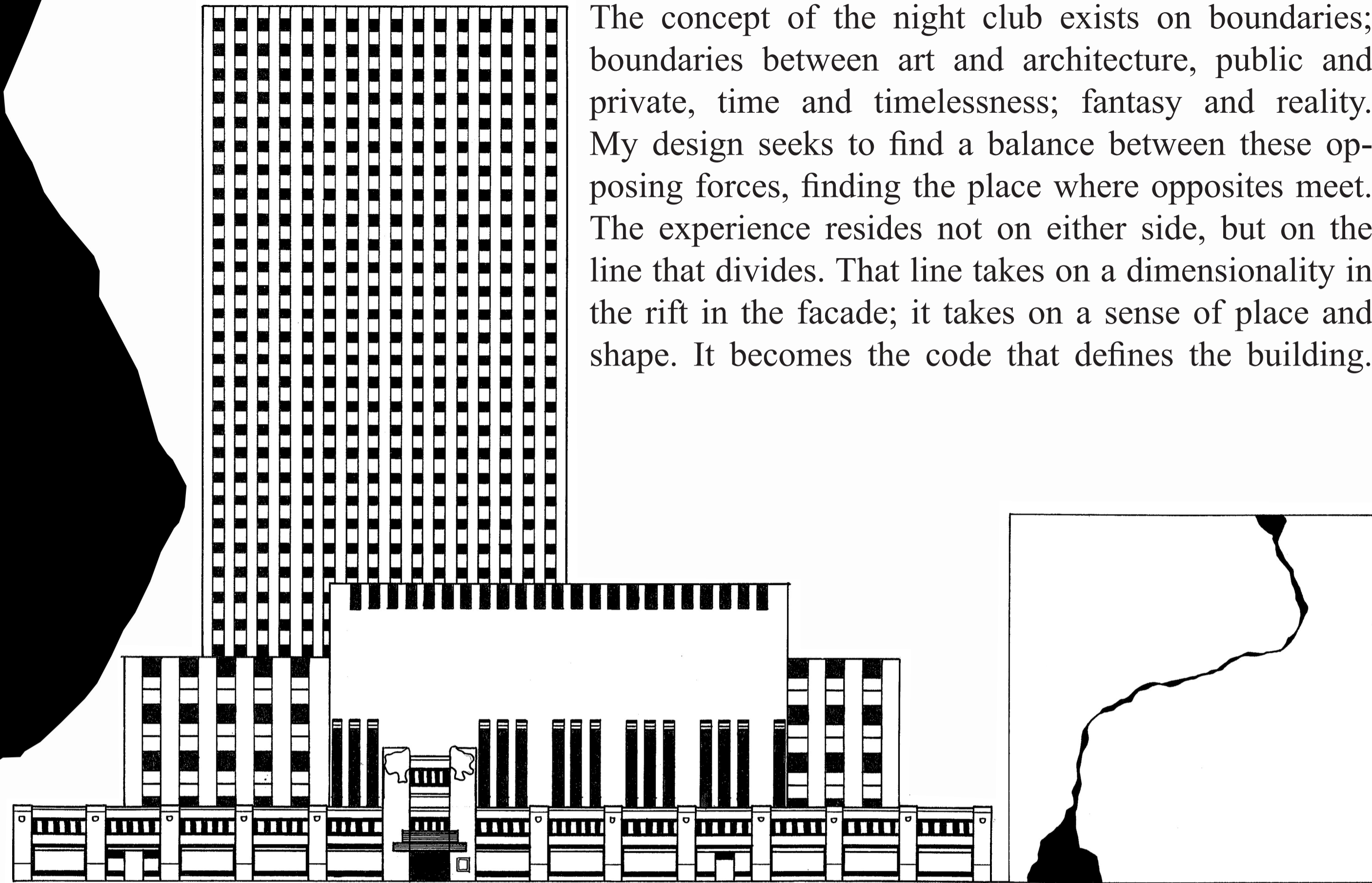


\\Section

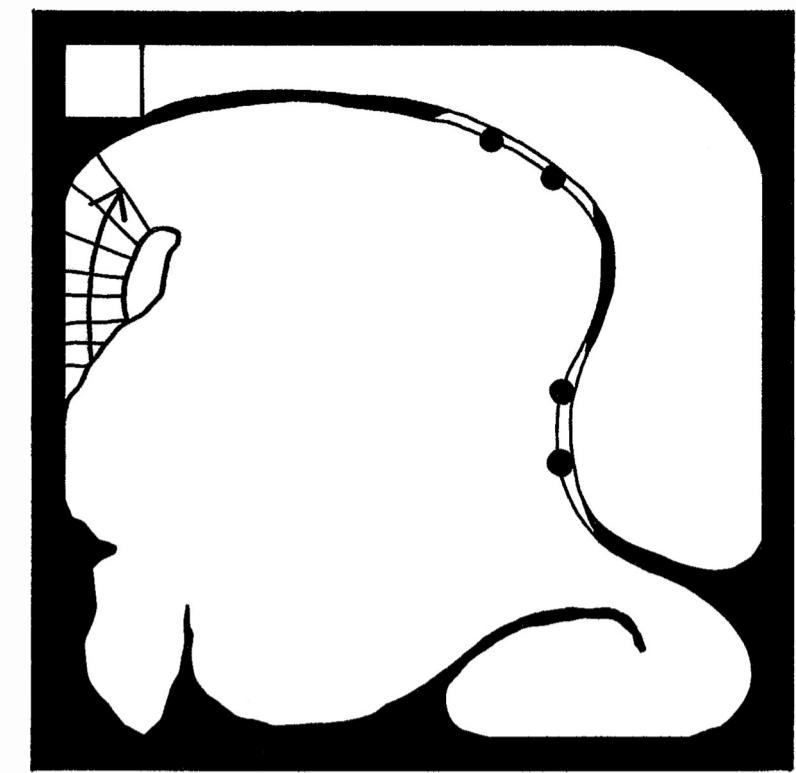


\\Montages

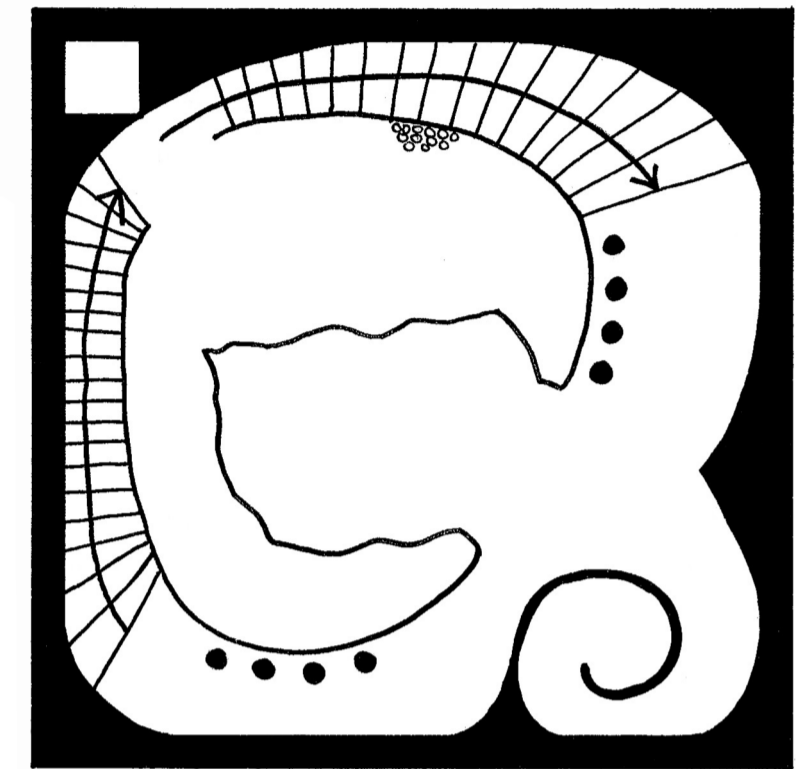
The concept of the night club exists on boundaries; boundaries between art and architecture, public and private, time and timelessness; fantasy and reality. My design seeks to find a balance between these opposing forces, finding the place where opposites meet. The experience resides not on either side, but on the line that divides. That line takes on a dimensionality in the rift in the facade; it takes on a sense of place and shape. It becomes the code that defines the building.



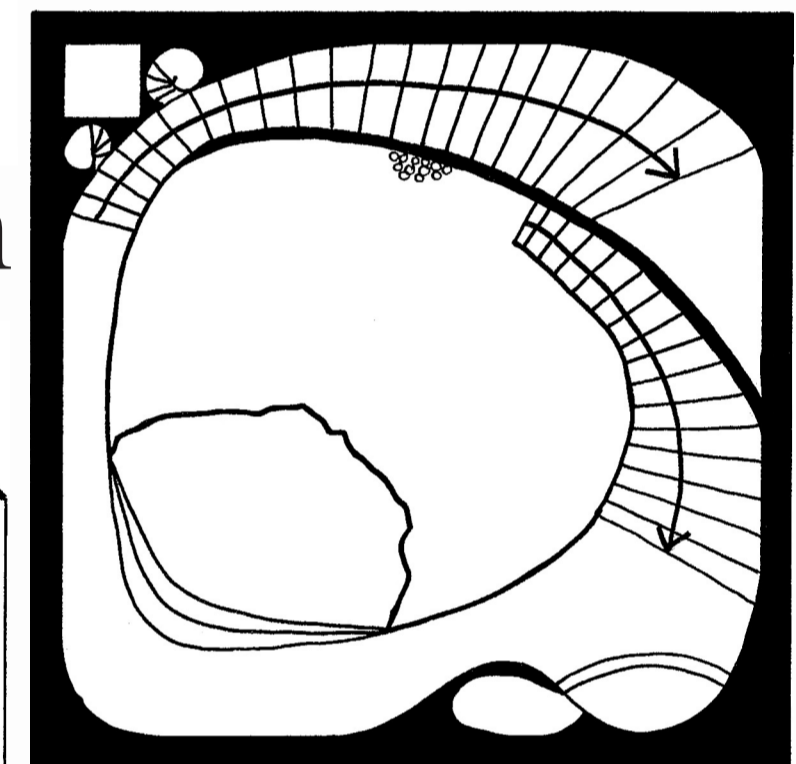
\\Site Elevation



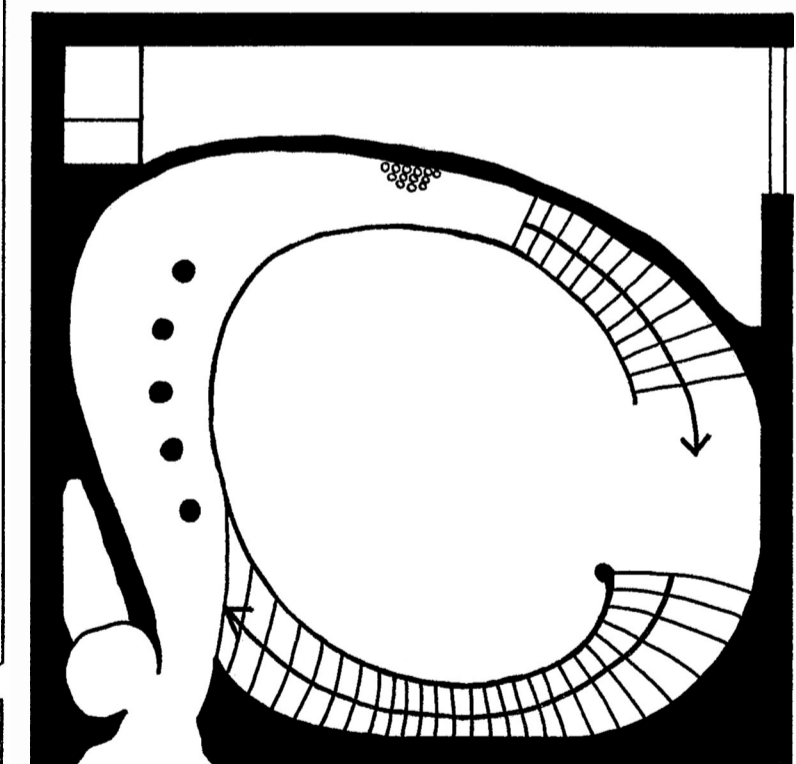
Roof



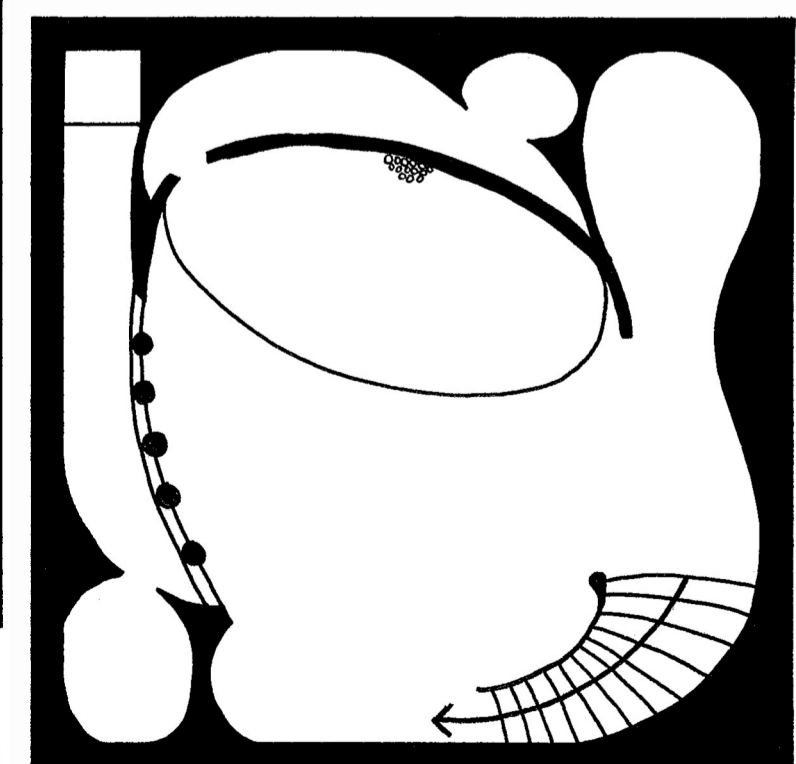
Second



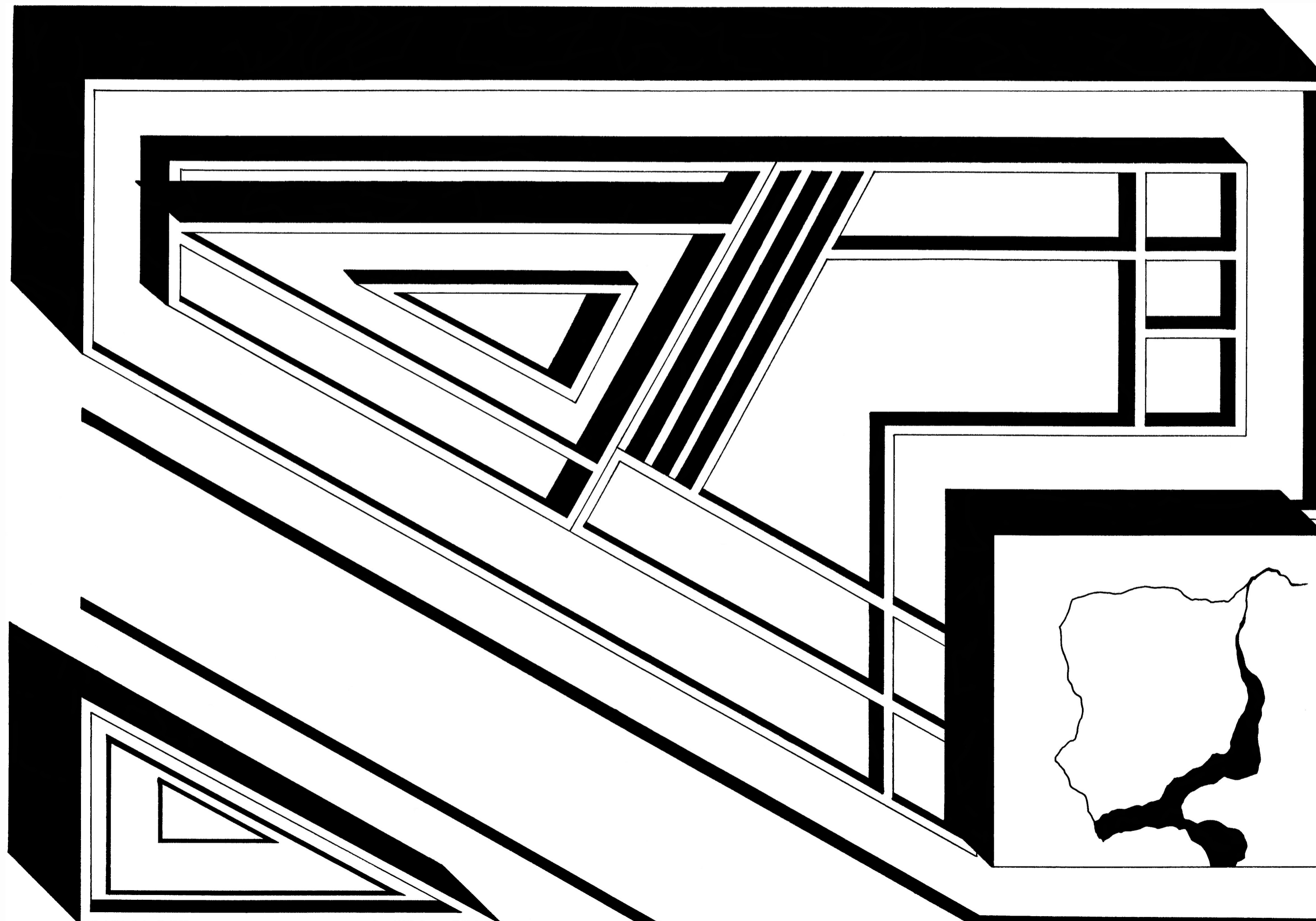
First



Ground



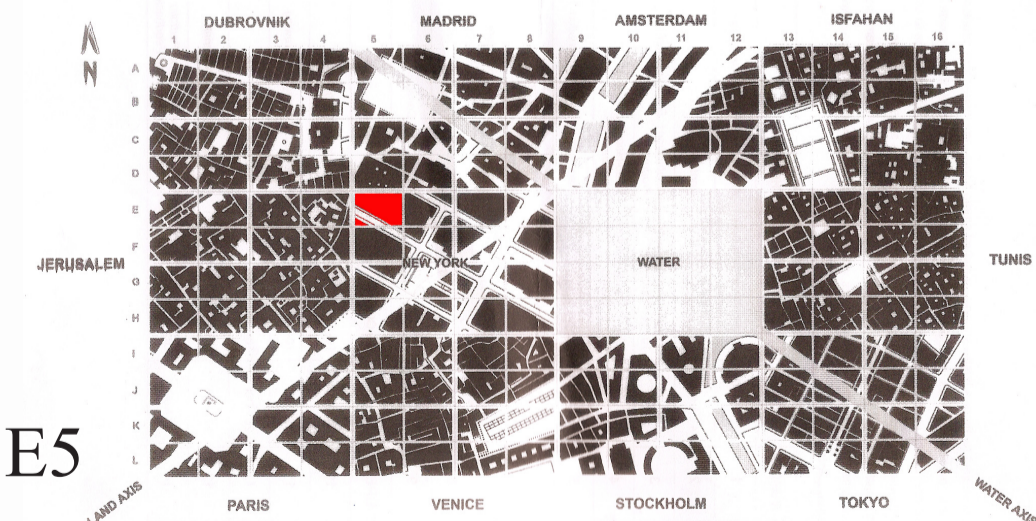
\\Plans



\\Aerial Plan

Originating in Manchester in the 1980's, rave culture began in abandoned warehouses: dilapidated urban buildings with a renewed function. In designing a purpose-built night club I have sought to capture the essence of the muffled grittiness associated with these grunge locations through construction with recycled materials in the organic cave-like interior. Its amorphous envelope has been dematerialised to an essentially pure surface, creating an interface between reality and the complexities of the fantasy land that exists within. Eroded openings, subtle intrusions on the rectilinear facade, allow minimal light and sound to escape, hinting at what lies inside, yet, maintaining the mystery concealed within.

\\Sarah-Jane Thomson 309199972



\\Night Club NEW YORK CITY