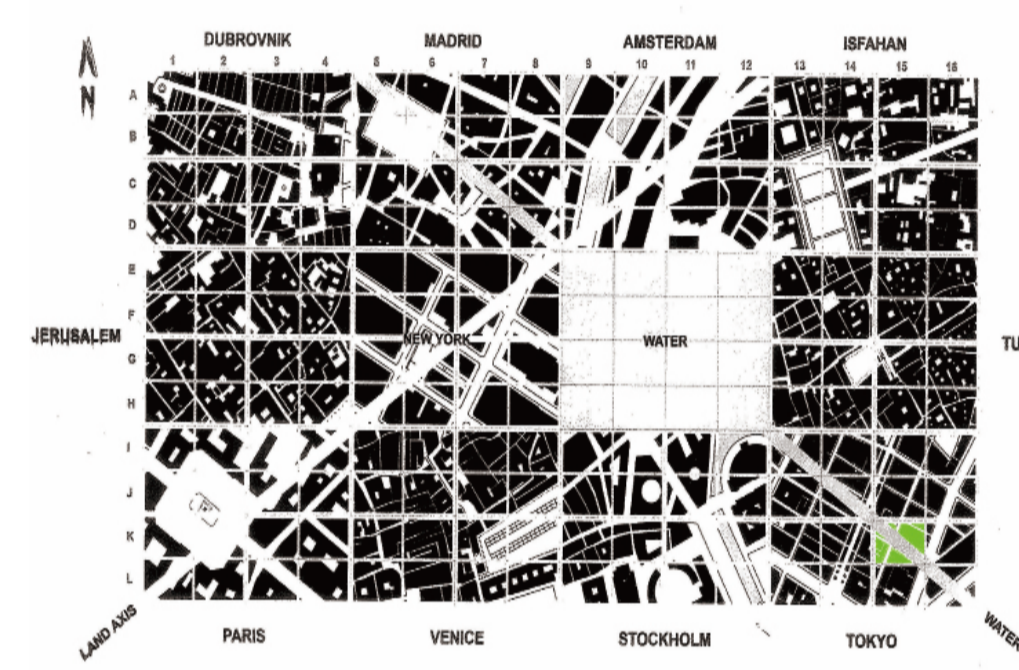


TOKYO DOMED ZOO

Yu Huang 309010144 BLOCK REFERENCE K15



Tokyo Dome Zoo is designed on the concept of amalgamation of nature and human being. The design of the zoo is modern and different with the traditional zoo. The function is not only for people's relaxation but also for the protection of the nature. People can relax in the garden and release the stress from the daily life, at the same time, the zoo enable people thinking the coexist of human and nature.



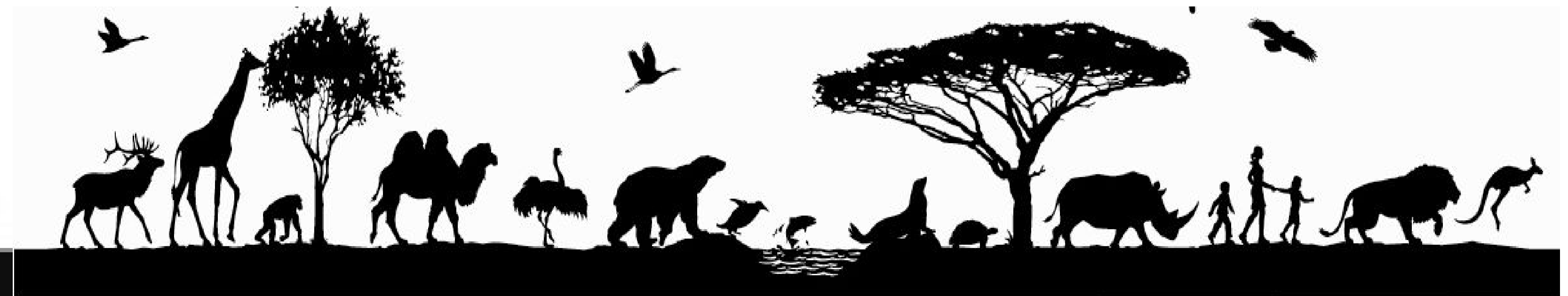
LOCATION PLAN 1:10000



AERIAL PLAN OF ENTIRE SITE 1:200



ELEVATION 1:200



東京ドーム動物園



Avifauna

鳥類

Waterfall

瀑布

Terrstrial Animals

陆地動物

New Modern Type

Ferry
渡し船

新しいモダンなタイプ

Garden

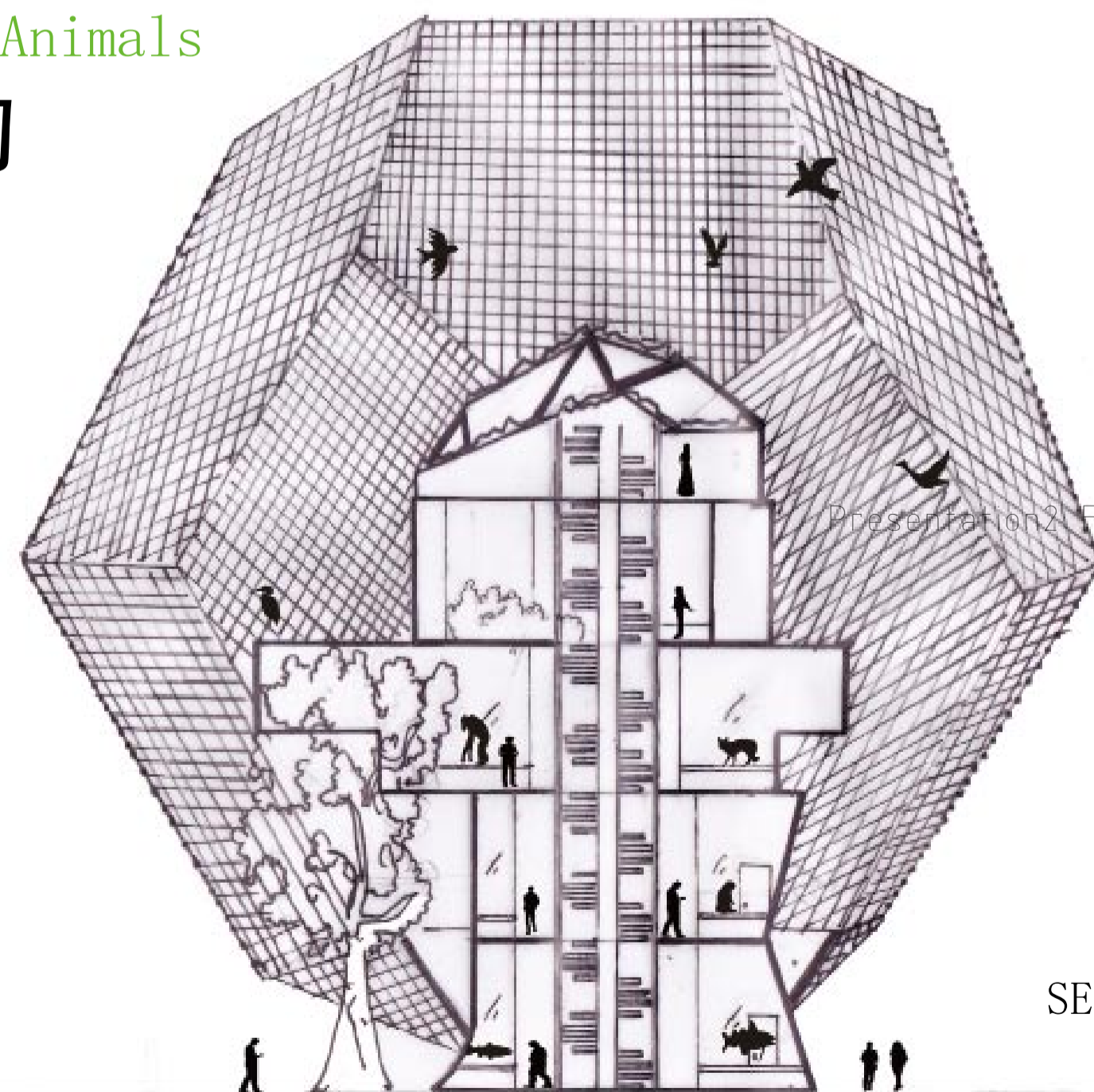
庭園

Amphibians

両生類 動物

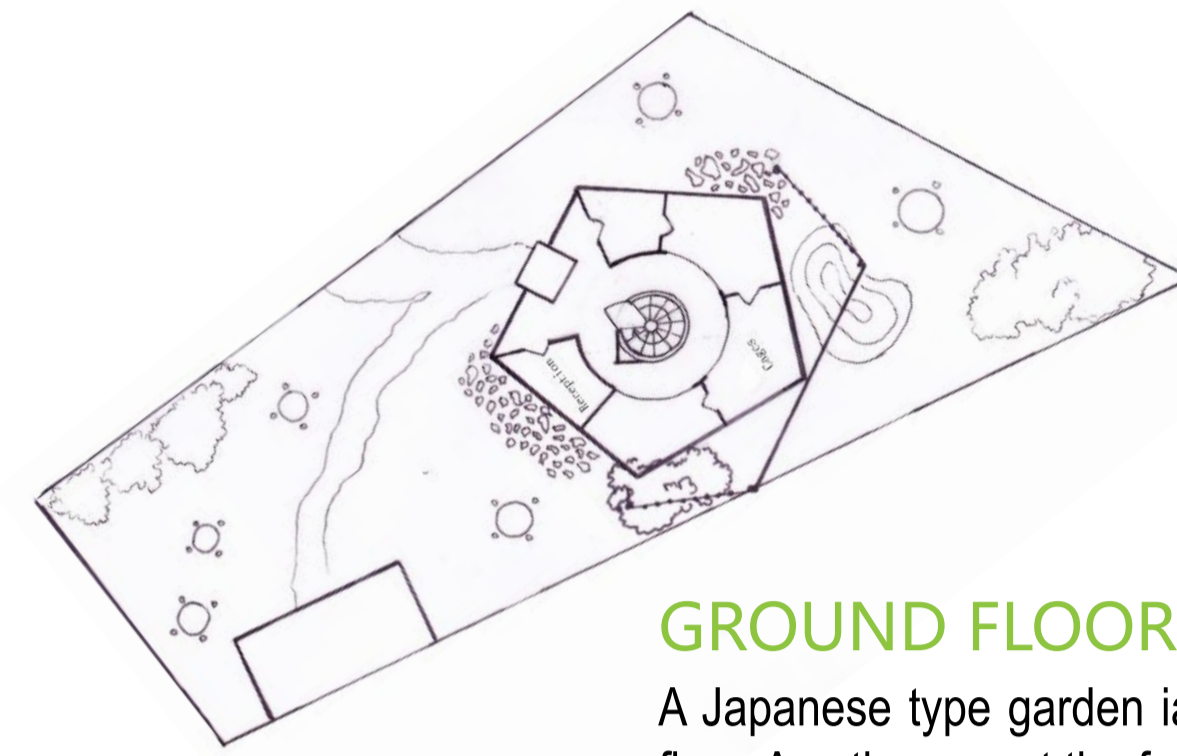
Marine Animals

海洋動物



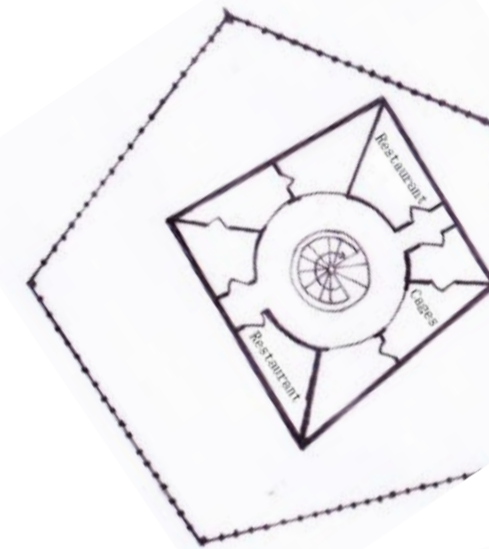
SECTION 1:200

東京ドーム動物園



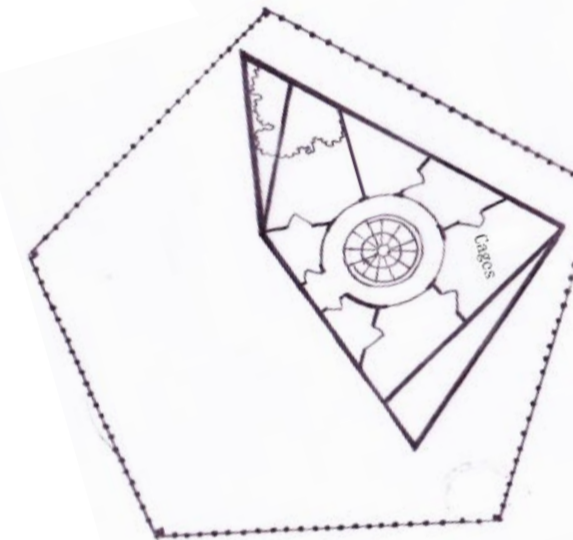
GROUND FLOOR PLAN

A Japanese type garden ia designed on the ground floor. A path connect the ferry station and entrance. Reception and marine animals are on this floor



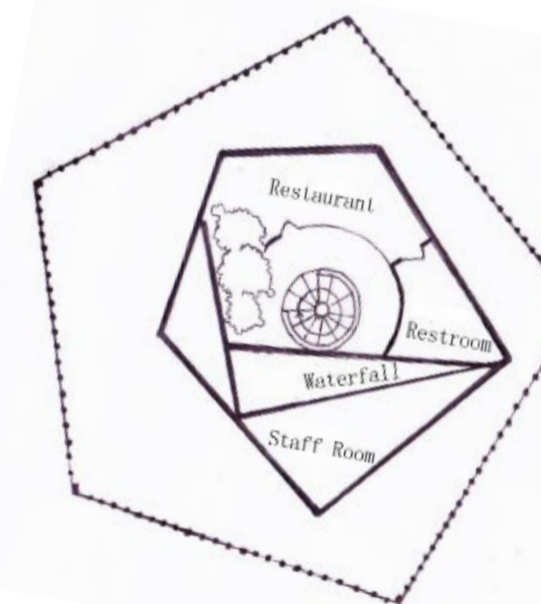
SECOND FLOOR PLAN

Amphibians section is on this floor and you can find the restroom here as well



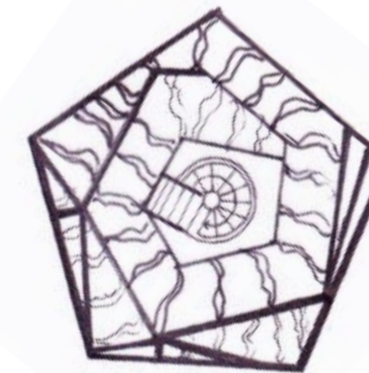
THIRD FLOOR PLAN

Third floor is terrestrial animals section. The interesting design of this floor is a excusive frame and trees inserted into the building.



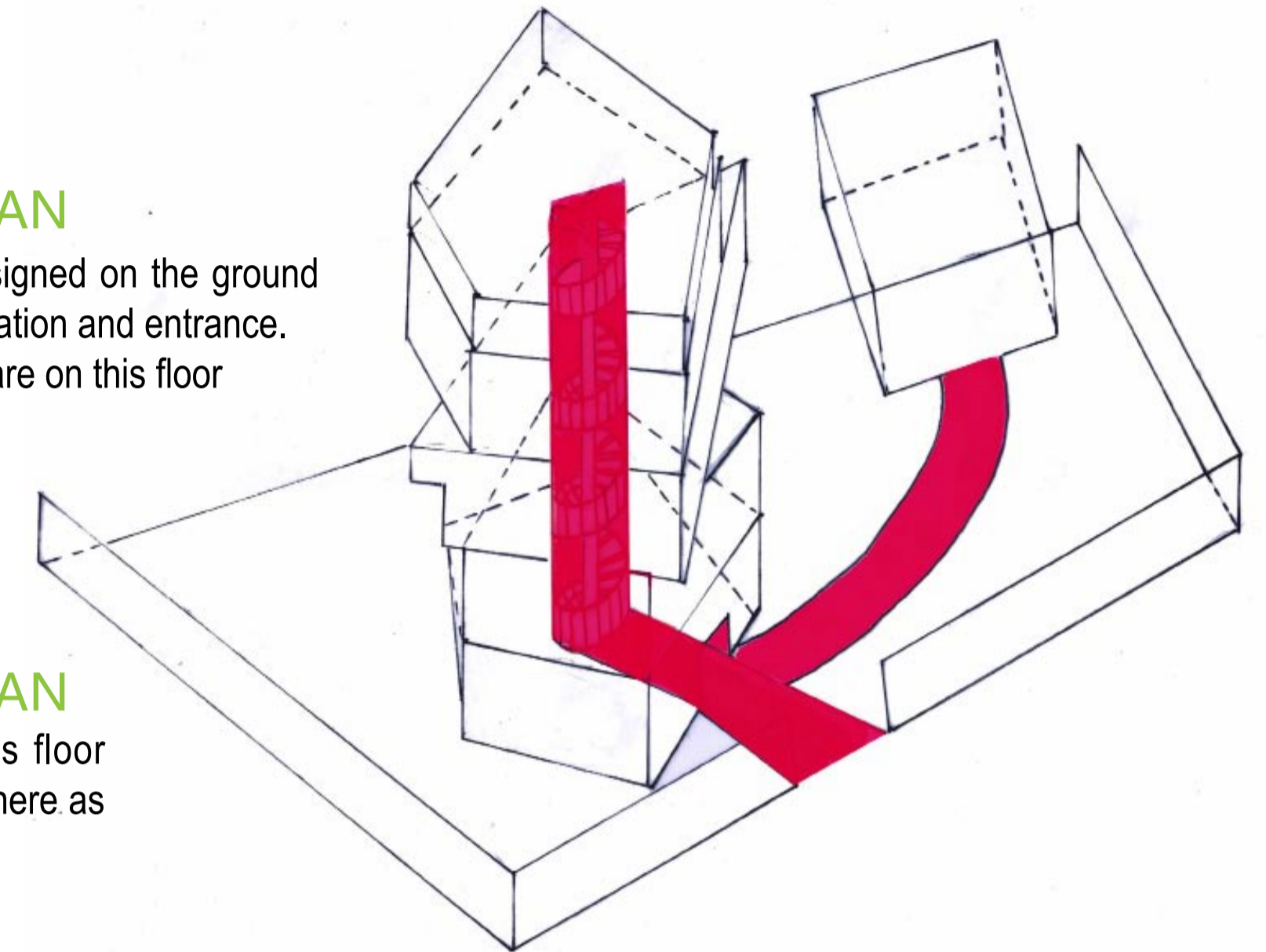
FORTH FLOOR PLAN

This floor is a restaurant for the visitor and there are many plants and a waterfall run through the room and flow into the garden



TOP FLOOR PLAN

Top floor is designed as a opened space for watching the avifaunas flying in the dome.



AXONOMETRIC 1:200

TOKYO DOMED ZOO

