

LOCATION PLAN 1:10000

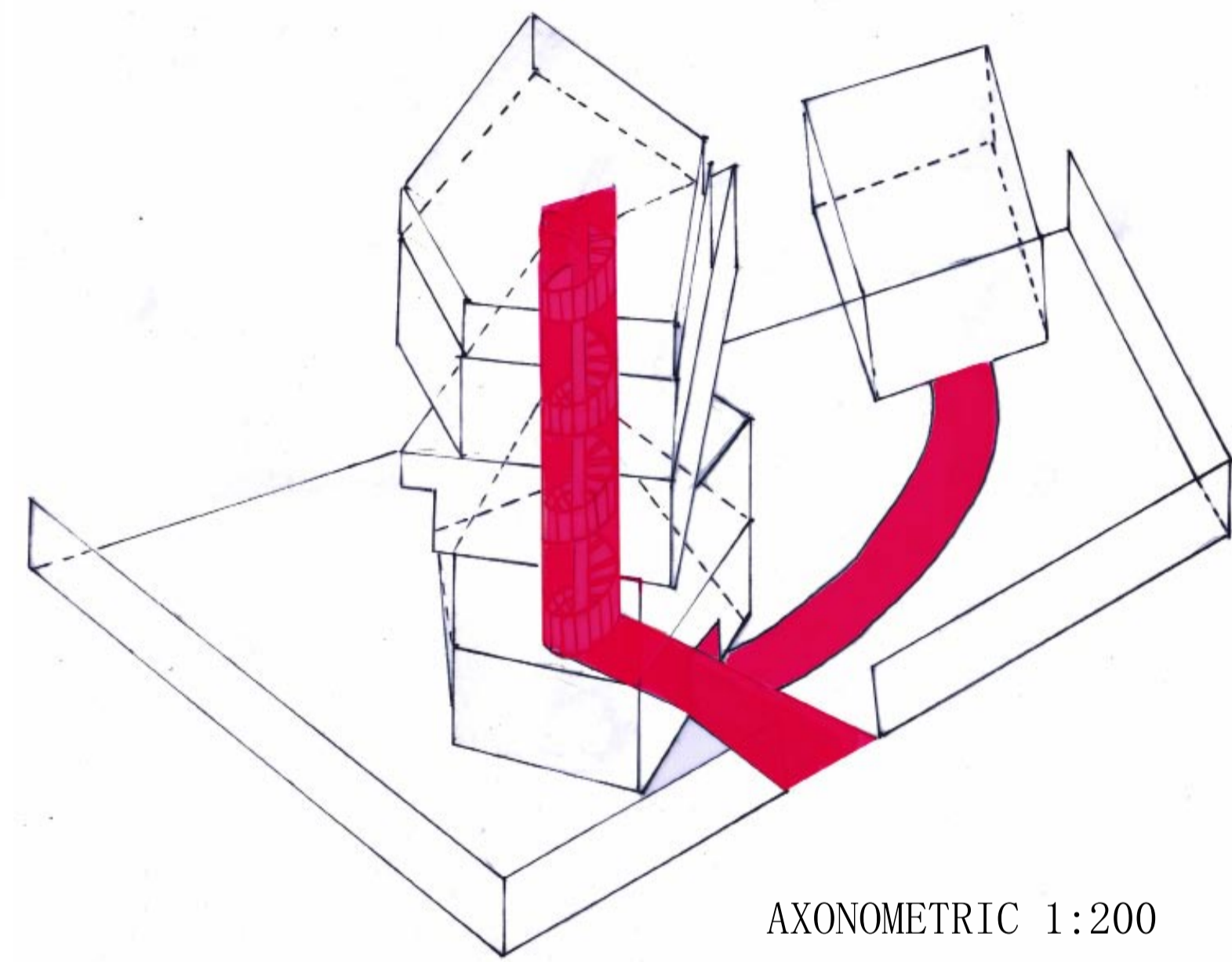


AERIAL PLAN OF ENTIRE SITE 1:200

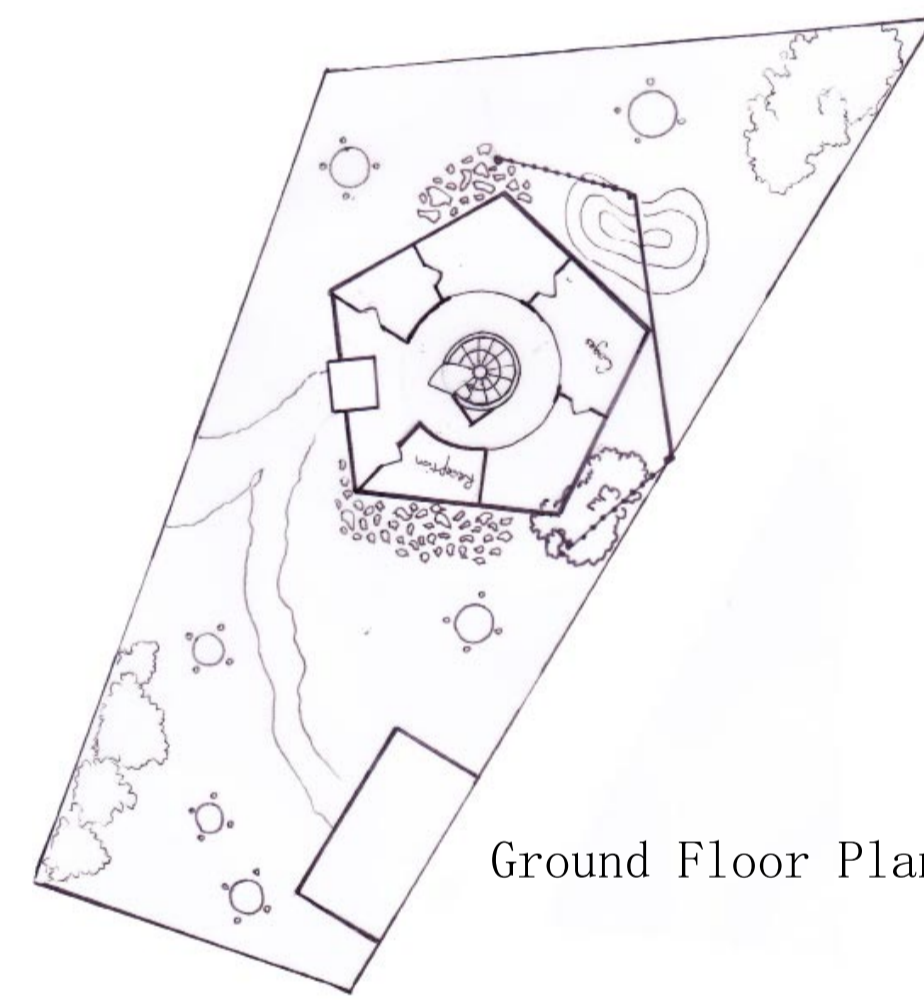
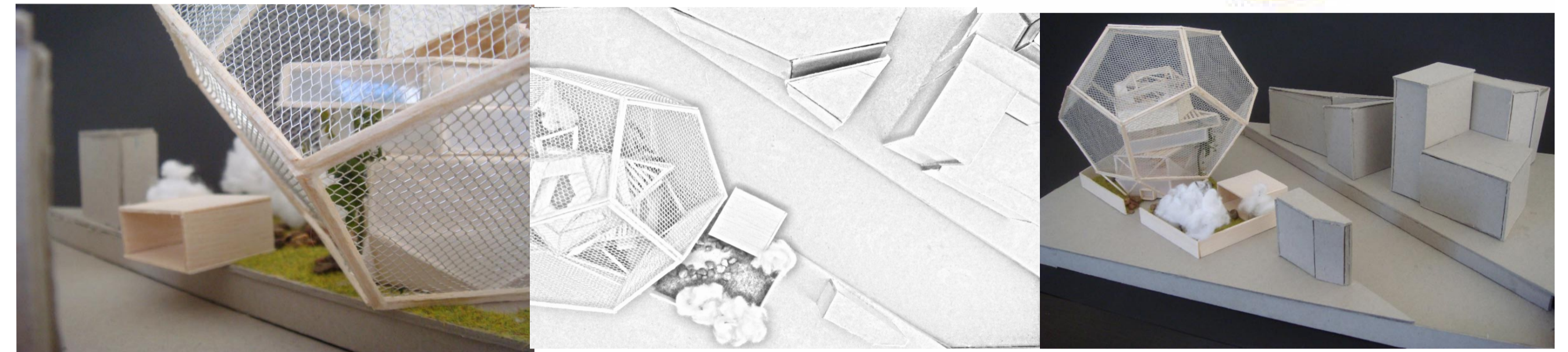
TOKYO DOMED ZOO

Yu Huang 309010144 BLOCK REFERENCE K15

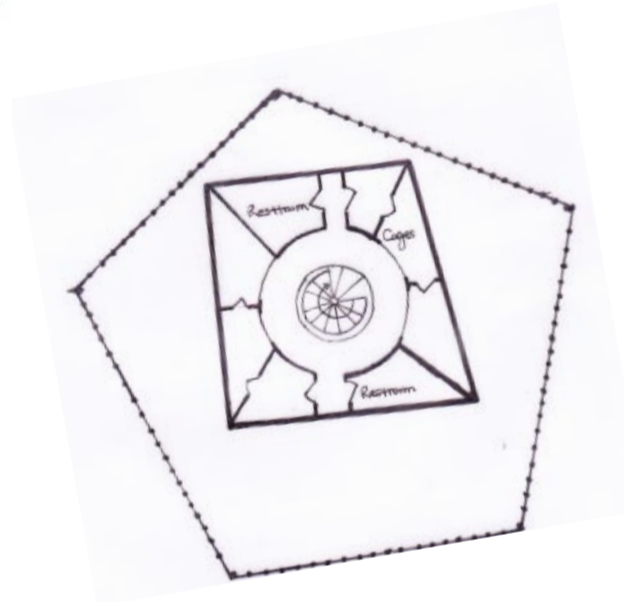
Tokyo Domed Zoo is designed on the concept of amalgamation of nature and human being. The design of the zoo is modern and different with the traditional zoo. The function is not only for people's relaxation but also for the protection of the nature. People can relax in the garden and release the stress from the daily life, at the same time, the zoo enable people thinking the coexist of human and nature.



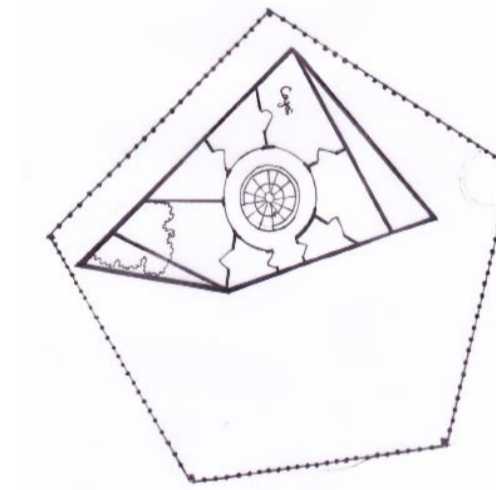
AXONOMETRIC 1:200



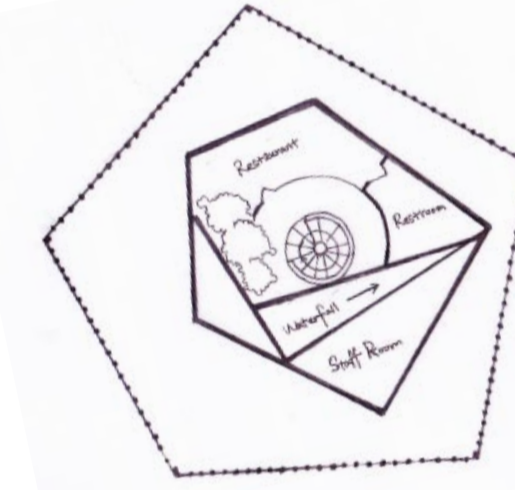
Ground Floor Plan



Second Floor Plan



Third Floor Plan



Forth Floor Plan



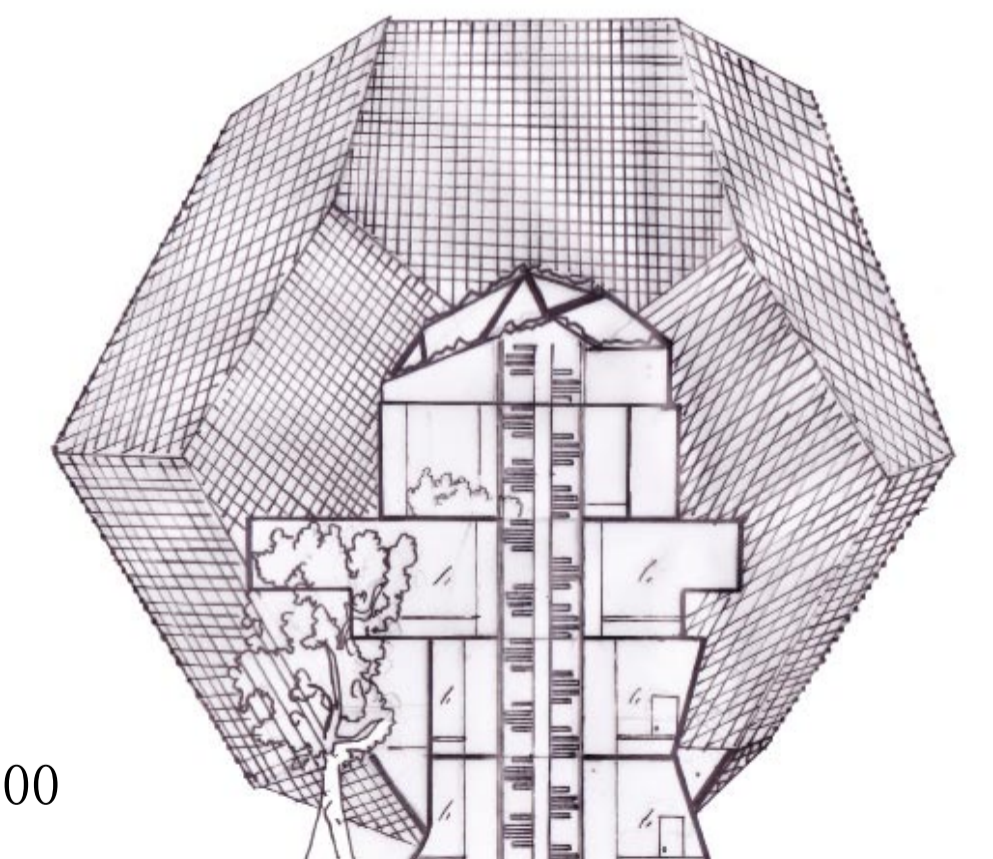
Top Flooe Plan 1:200



ELEVATION 1:200



SECTION 1:200



東京ドーム動物園

TOKYO DOMED ZOO