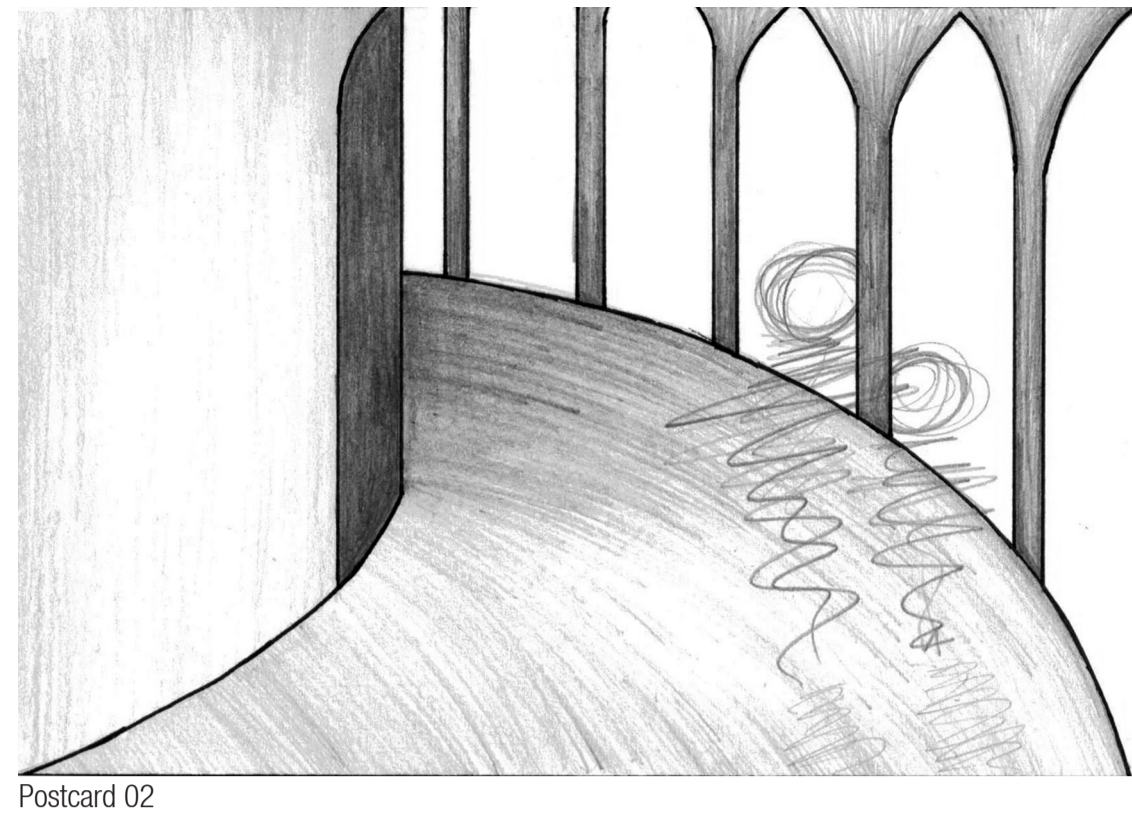
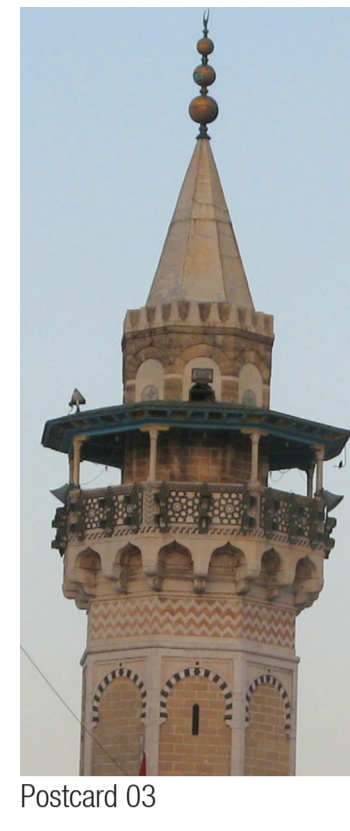


Postcard 01



Postcard 02



Postcard 03



Cardboard Site Plan + Balsa Model

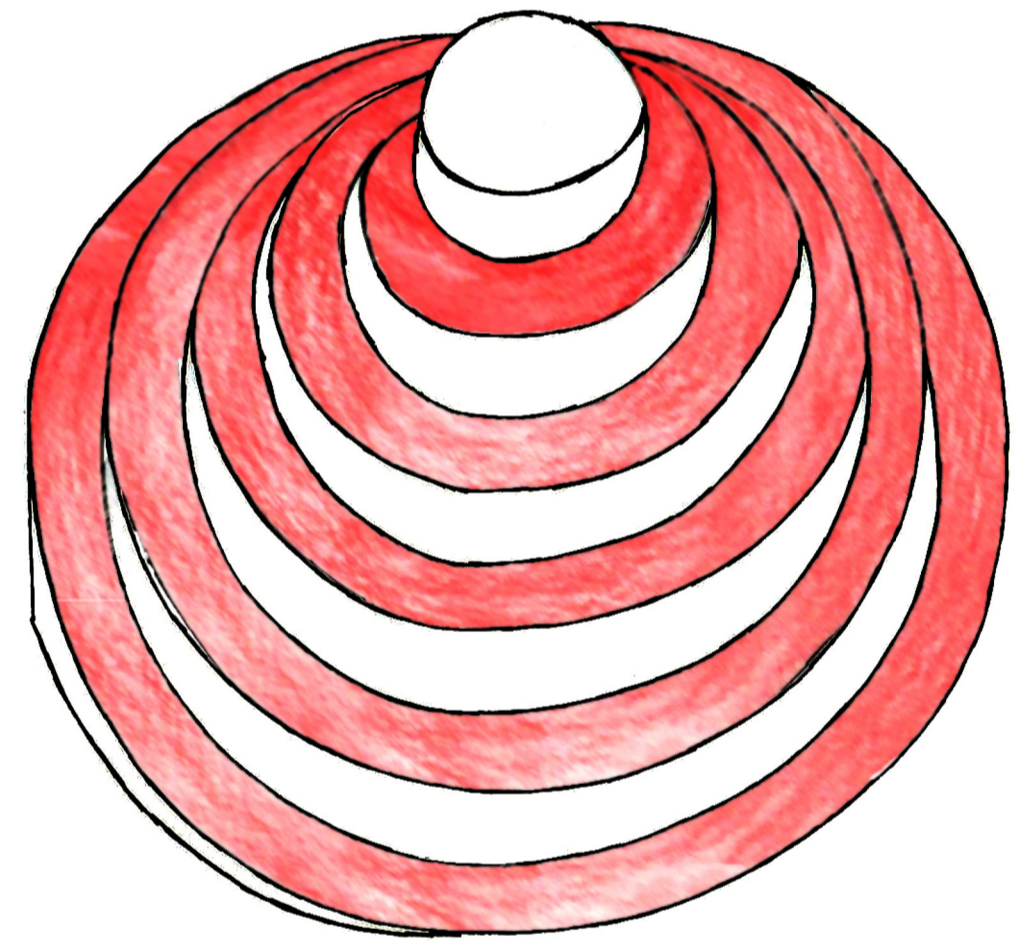
National Museum of Tunisia

سنوت ي ف ين طولا ف ح ت م ل ا

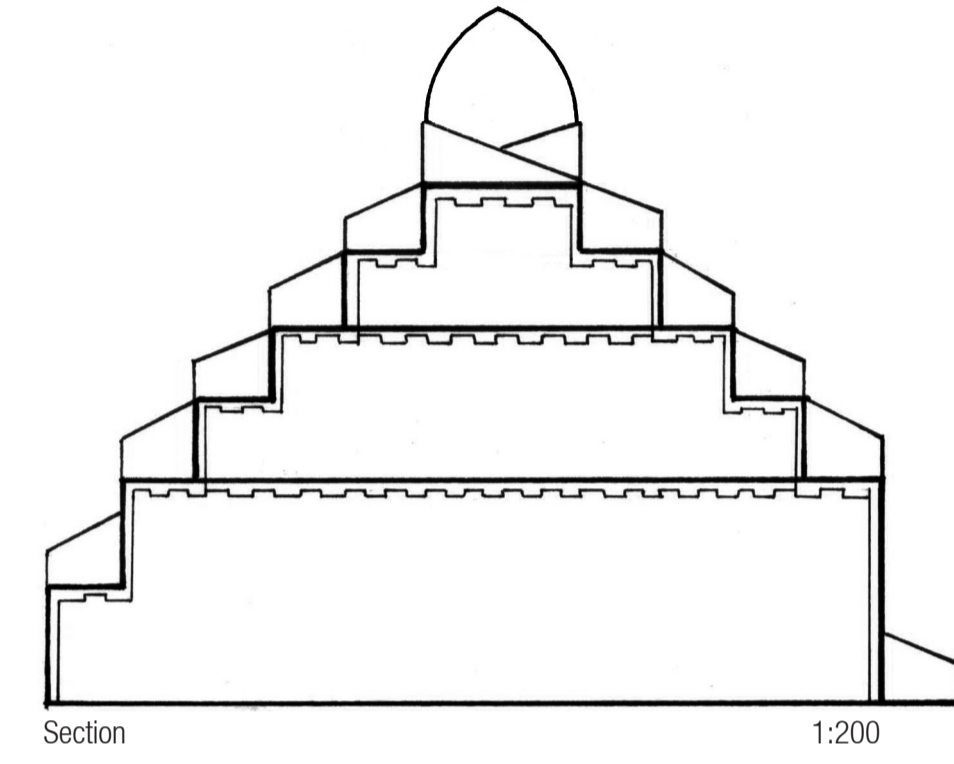
Tunis is a haven of rich and vibrant culture, acting as a meeting place between Arabia and Europe. The ancient city is as rich in history as it is in culture, being a place of significance to the Roman, European, and Arabic civilizations. In this rich and colourful place a purpose built museum to house and protect such treasures of history seemed ideal.

The design itself focuses on the importance of circulation within and throughout the museum, featuring double intertwining ramps wrapping themselves around the buildings exterior.

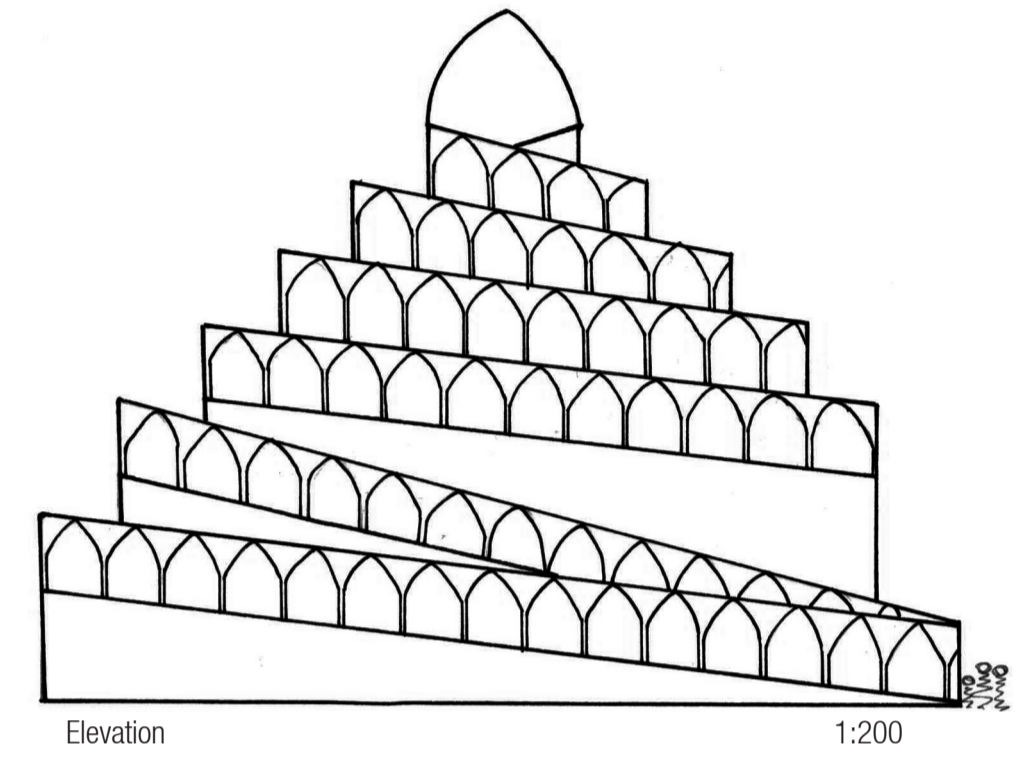
Each ramp is covered by light awning structure, protecting people from the harsh and constant sun, whilst archways still frame the spectacular views of the city. The stained glass dome atop of the building fills the book shop with vibrance and colour.



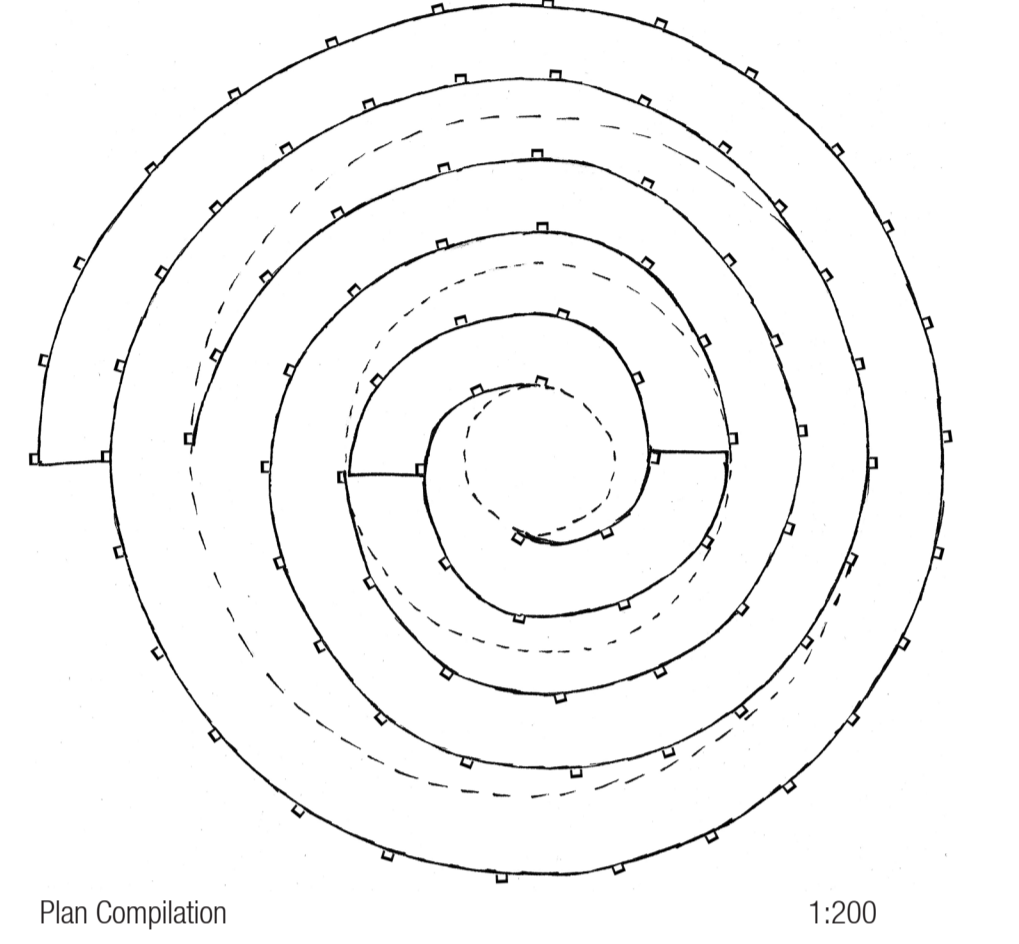
Axonometric - showing the 5 ramp levels



Section

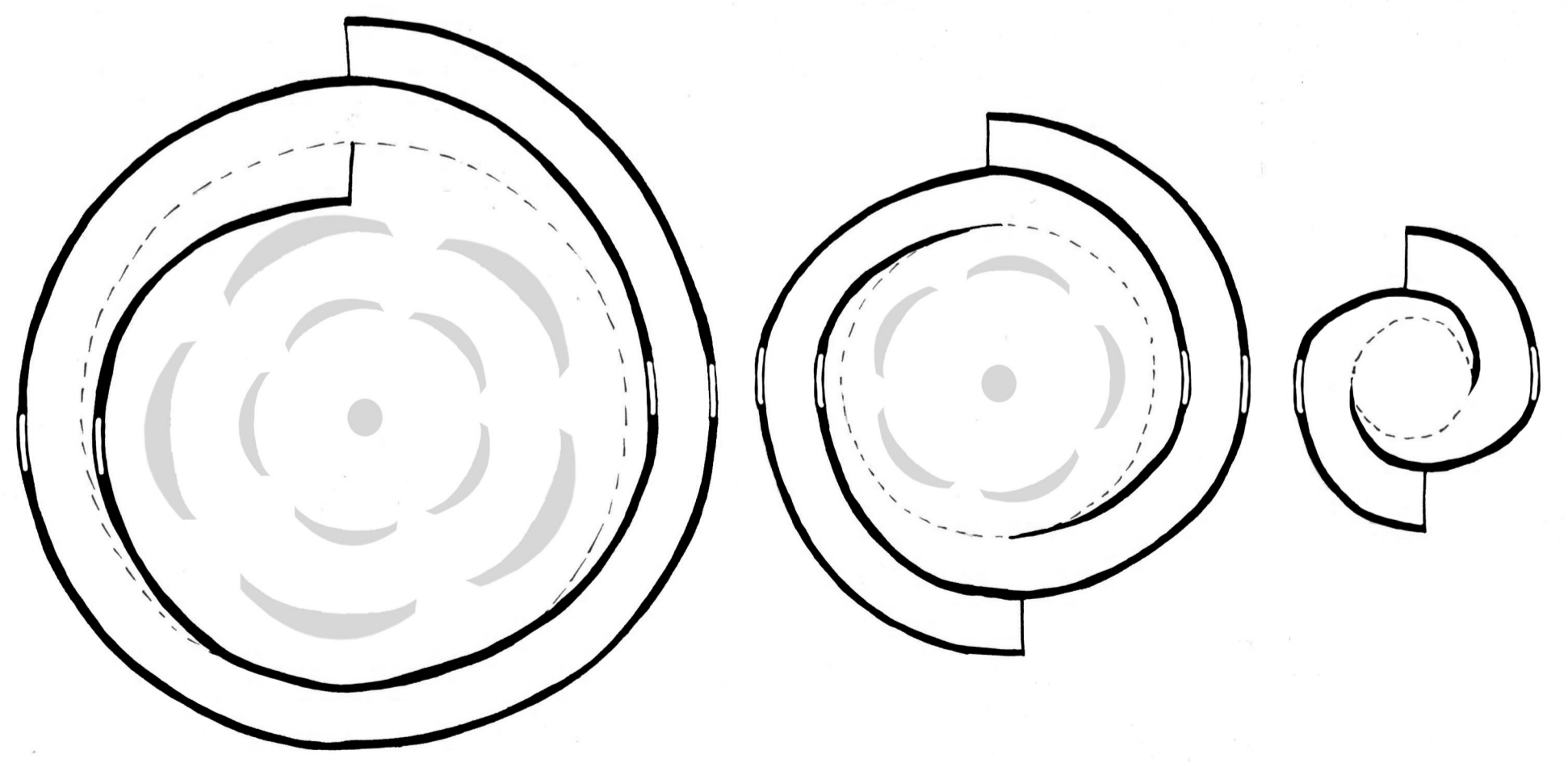


Elevation



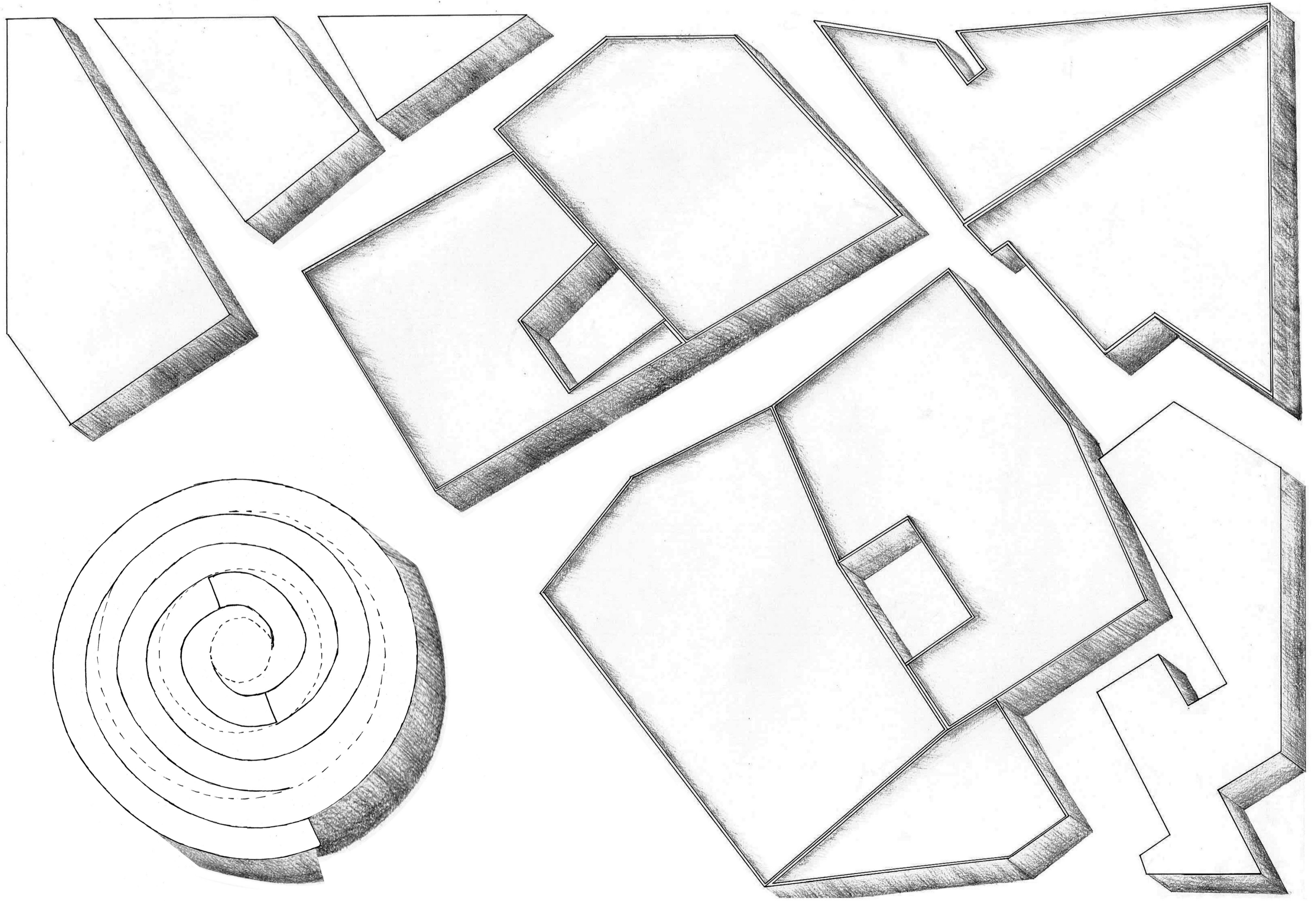
Plan Compilation

1:200



Exploded Plan

1:200



Site Plan

1:200