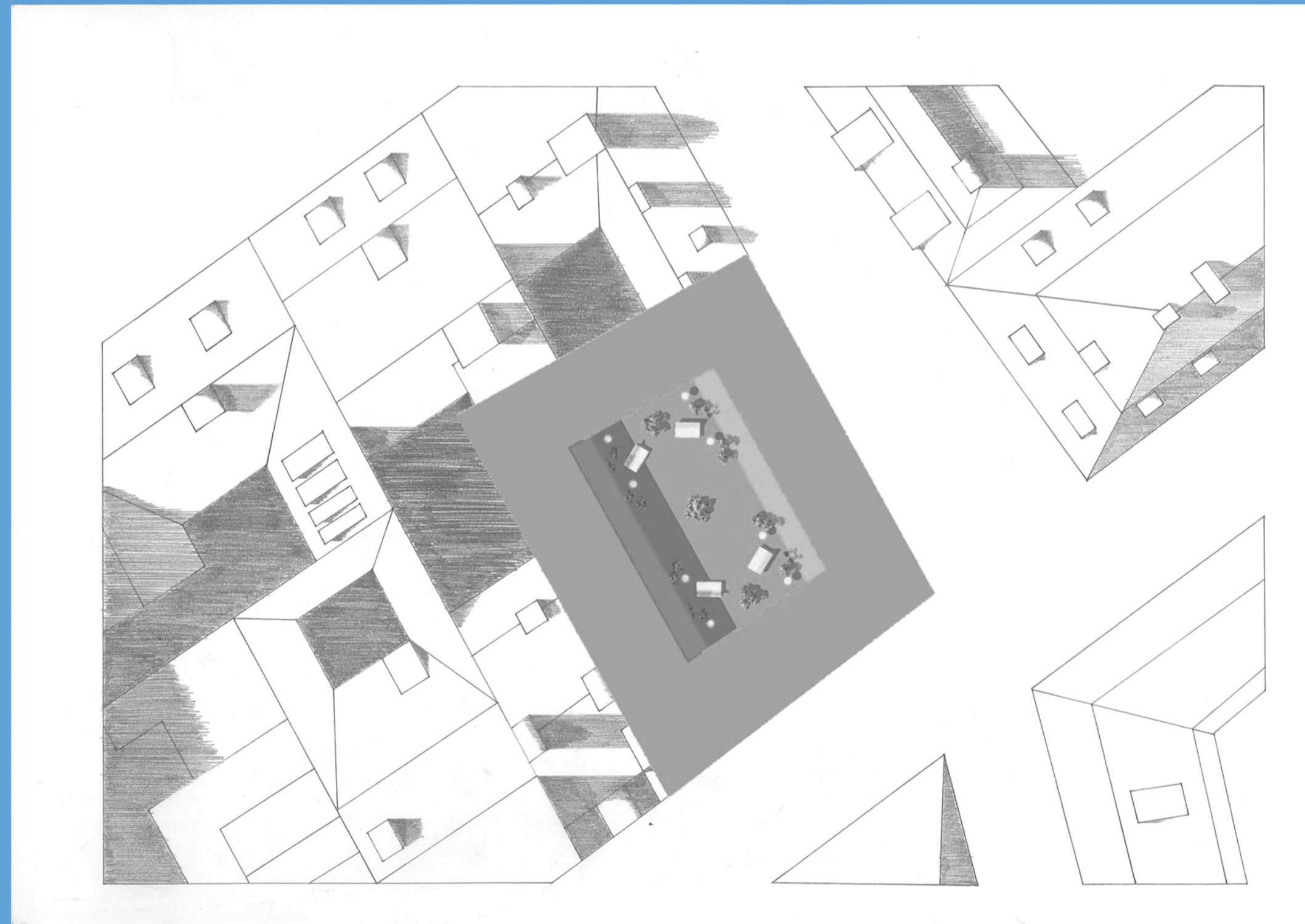
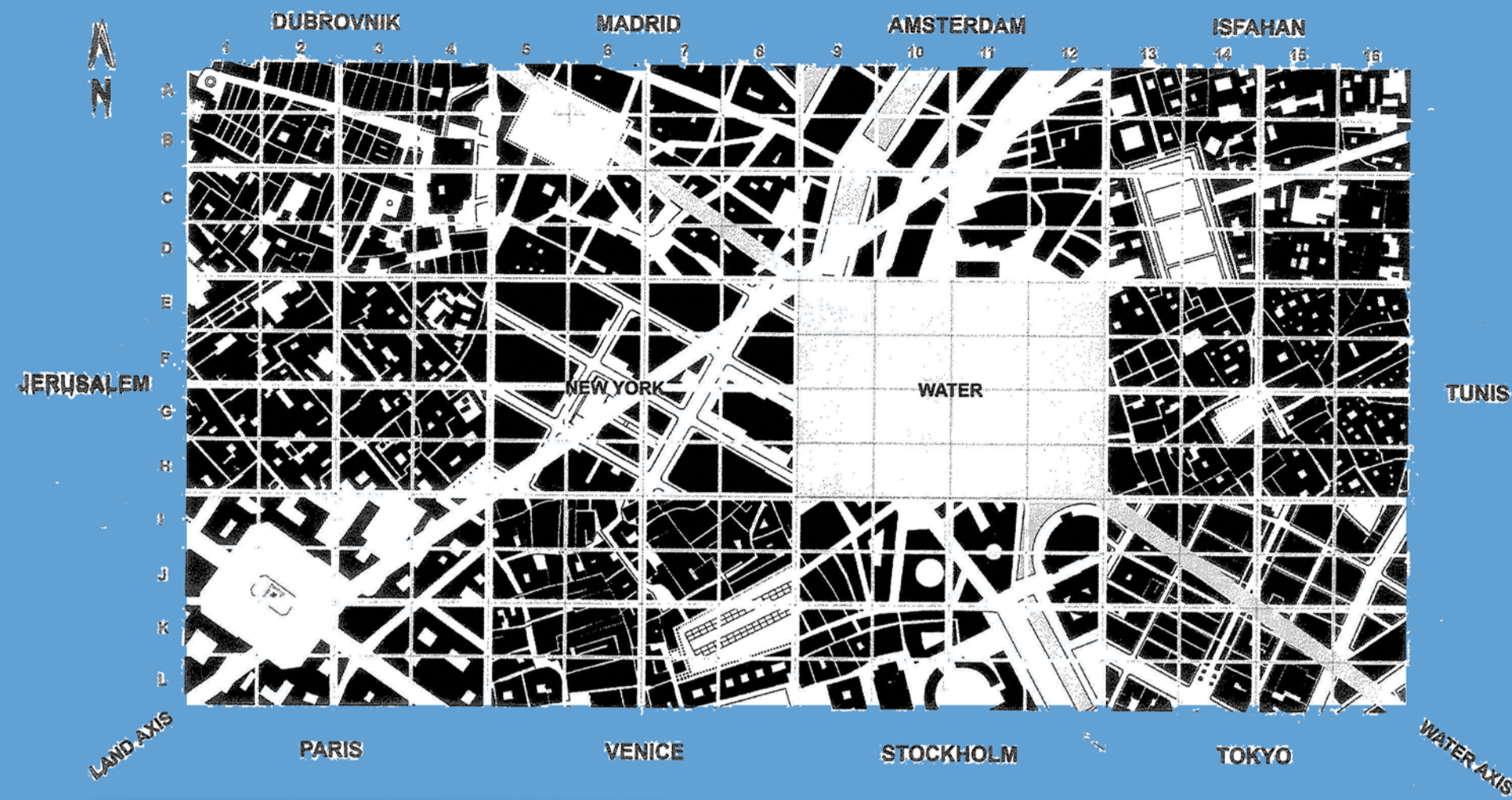


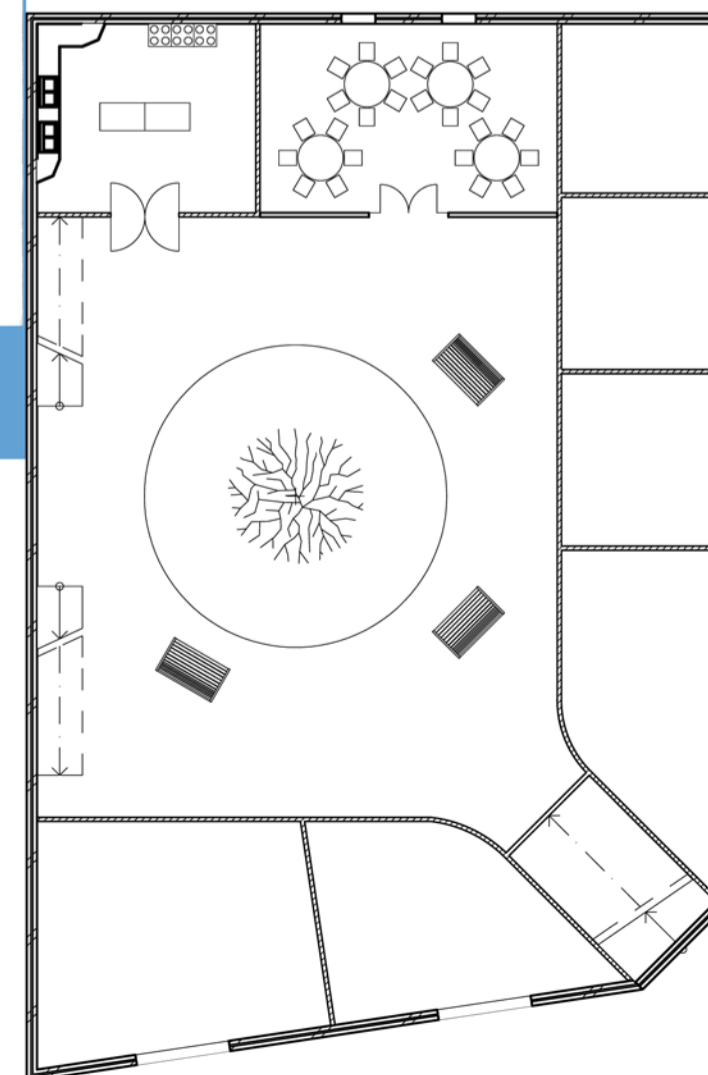
Age Care Centre

MOK CHON HONG 309013070 (I9)

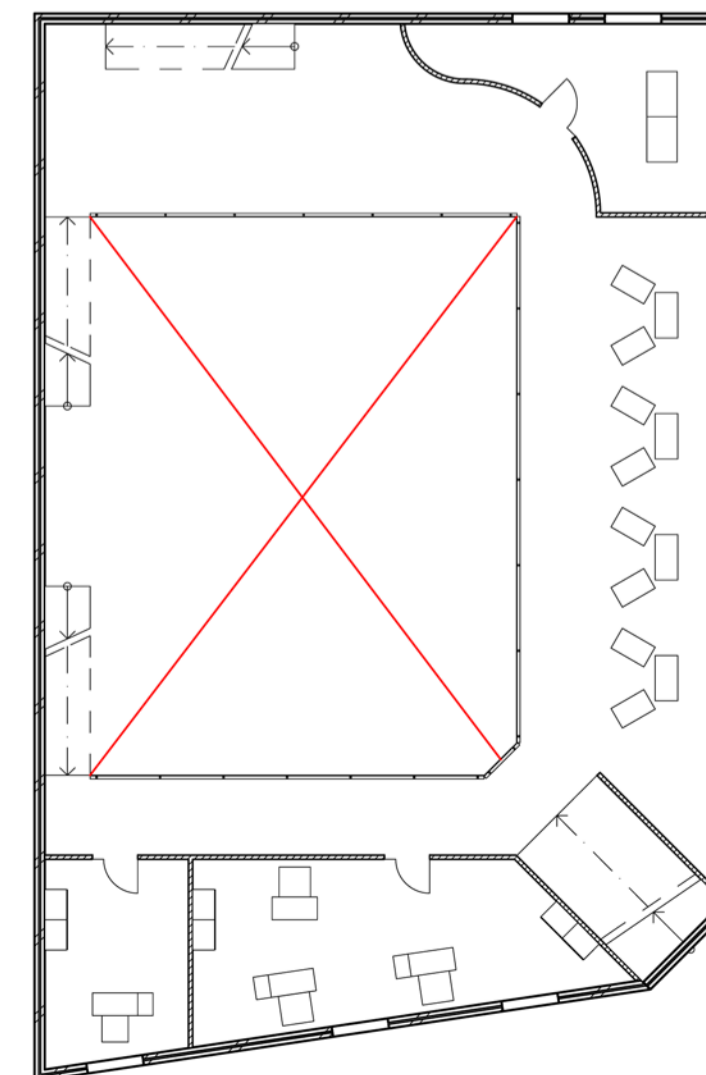
The age care centre serves as a second home for old folks. The house is separated into two partitions; the lower floor and the upper floor. The upper floor consists living rooms for people staying in the house. On the other hand, the lower floor is an activity area. Apart from being an age care centre, it is also a child care centre. Having children as young life source in the house will be the most effective way to eliminate loneliness of old man staying in the house.



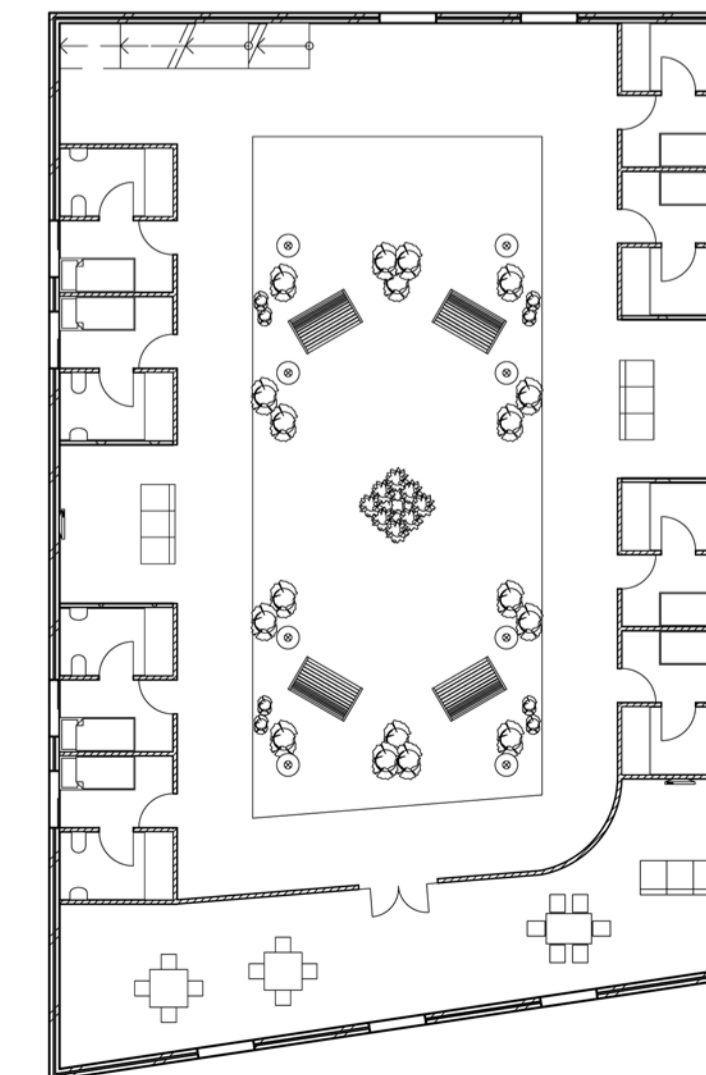
Plan 1:200
Ground



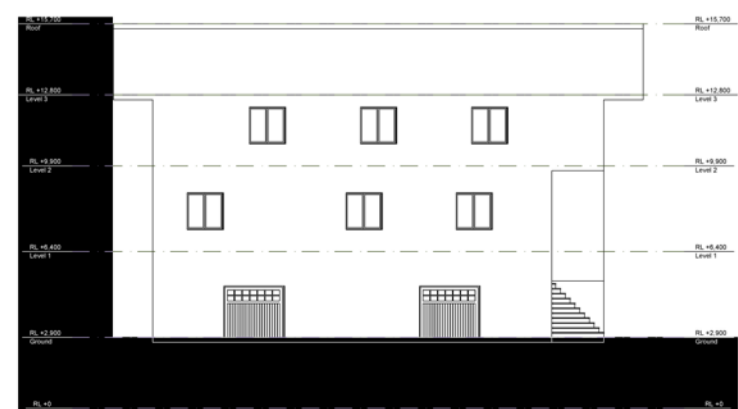
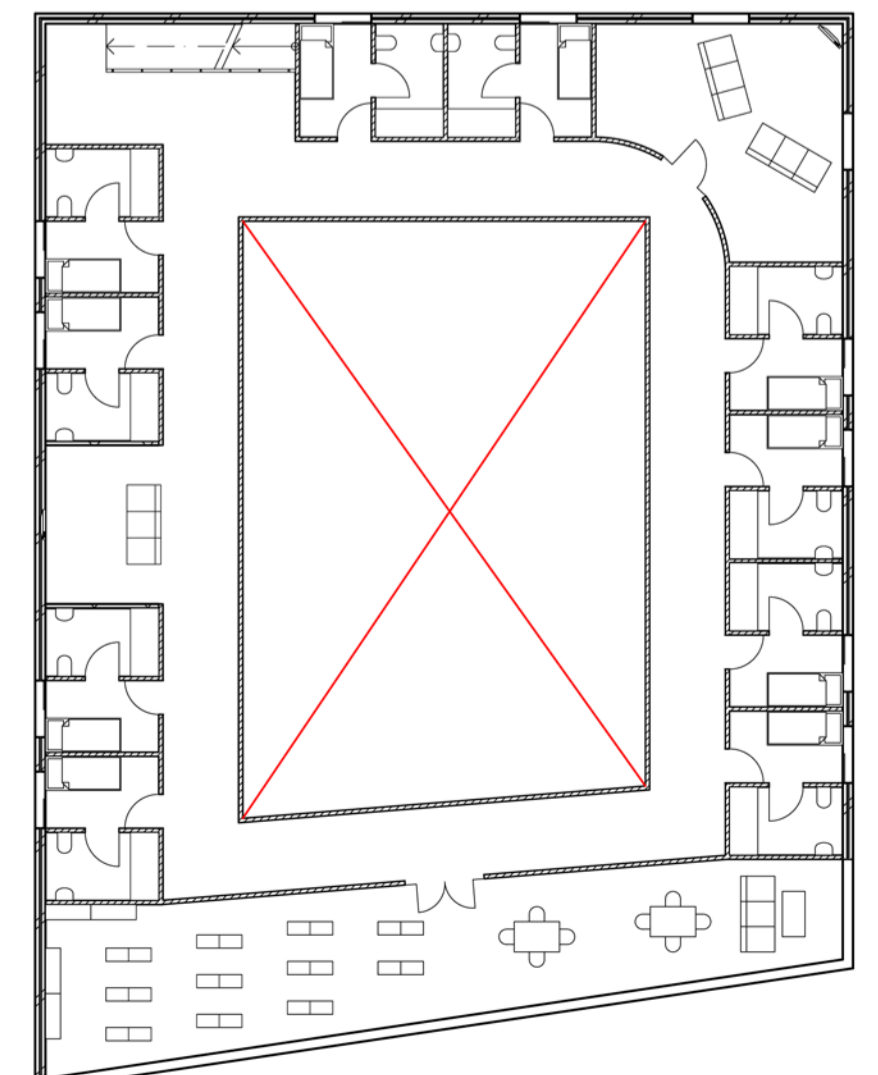
1st Floor



2nd Floor



3rd Floor



Elevation 1:200



Section 1:200