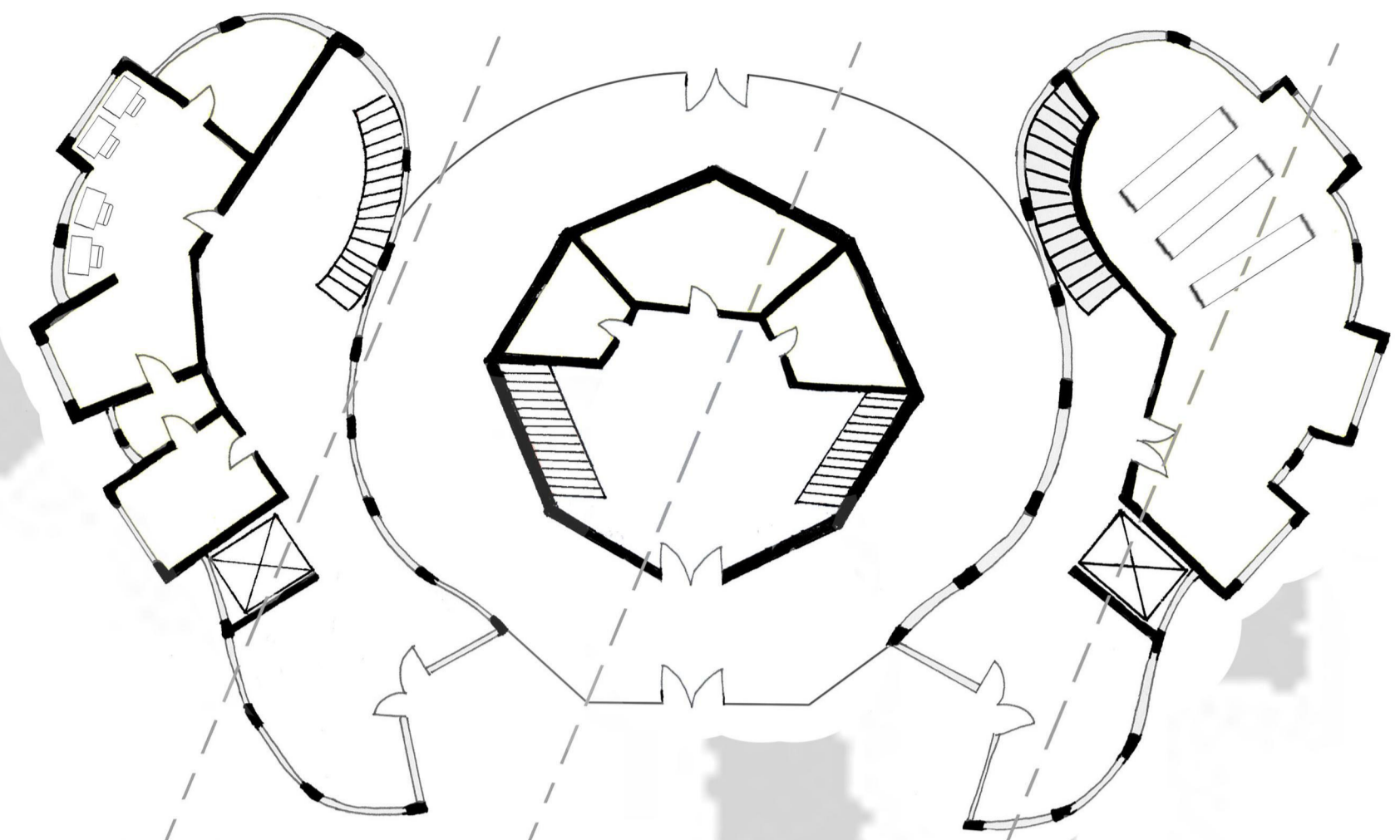
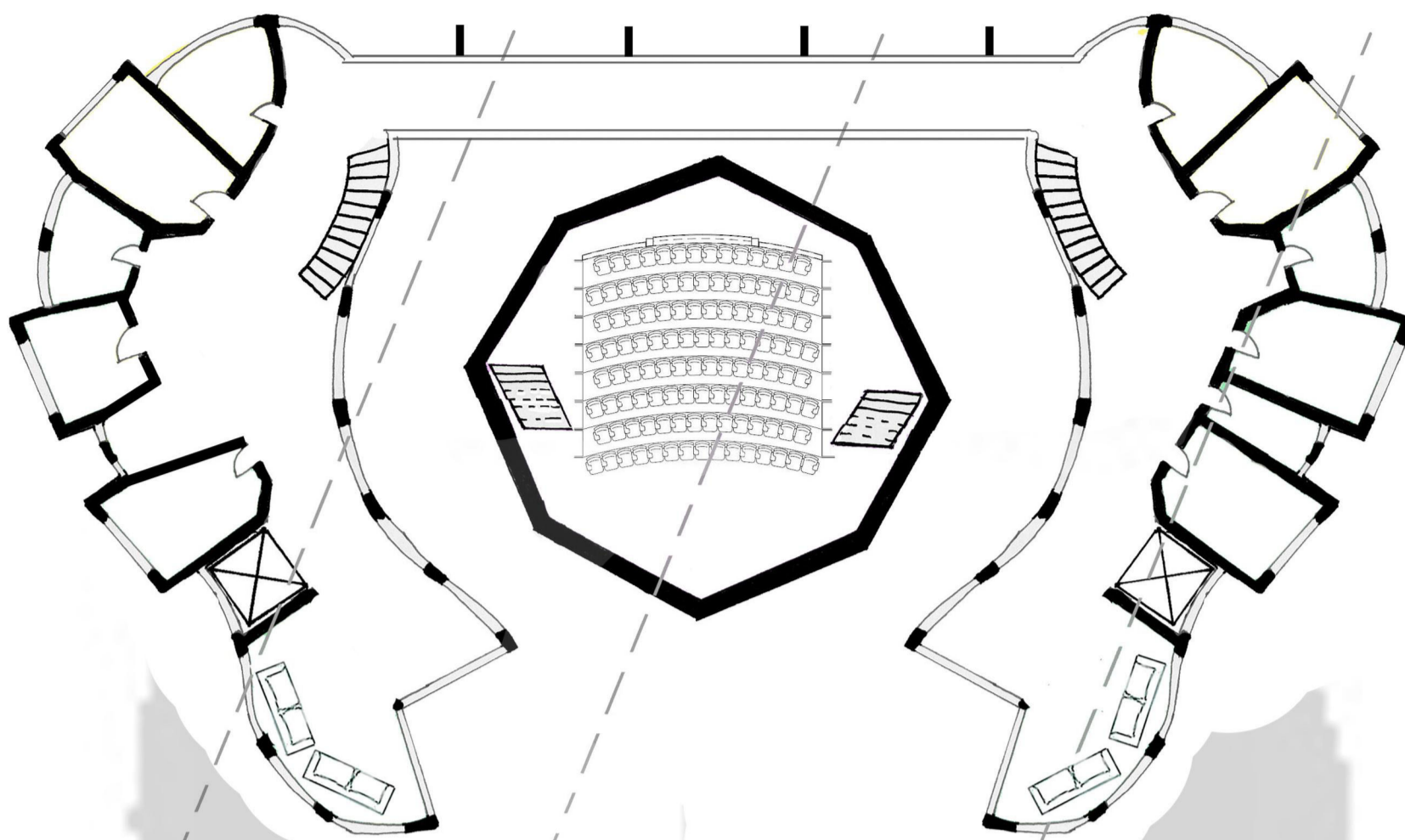


AXONOMETRIC



GROUND FLOOR PLAN 1:200



FIRST FLOOR PLAN 1:200

MY DESIGN STUDIO PROJECT IS A SCHOOL OF MUSIC, **STOCKHOLM CONSERVATORIUM**. EVIDENTLY, THE THEME OF THIS PROJECT IS ABOUT THE BLENDING OF **NOTES**, THE VOLUME OF **MUSIC**, AND THE MECHANISM OF **INSTRUMENTS**.

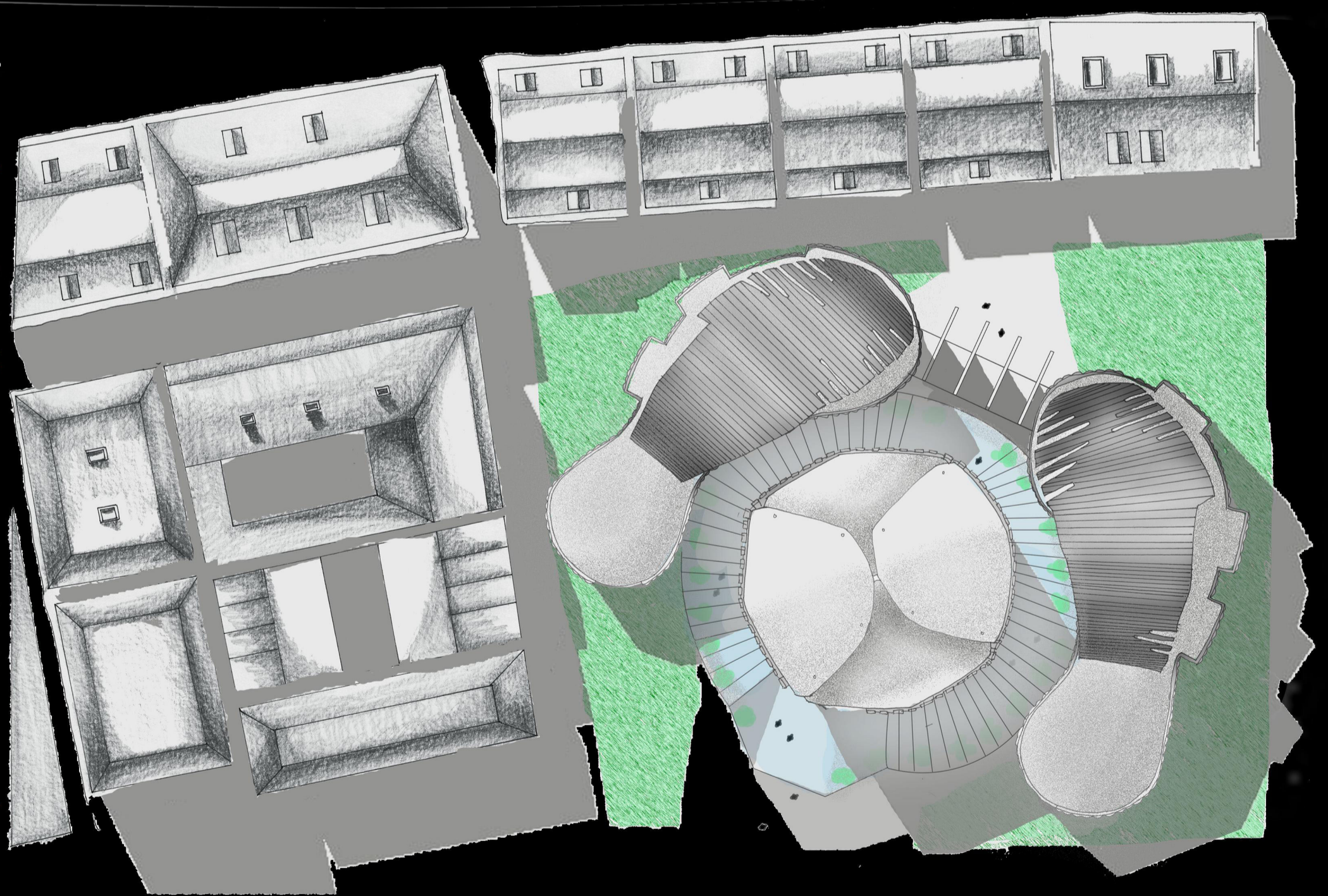
# STOCKHOLM CONSERVATORIUM

FIRST YEAR PROJECT

SEMESTER TWO 2009



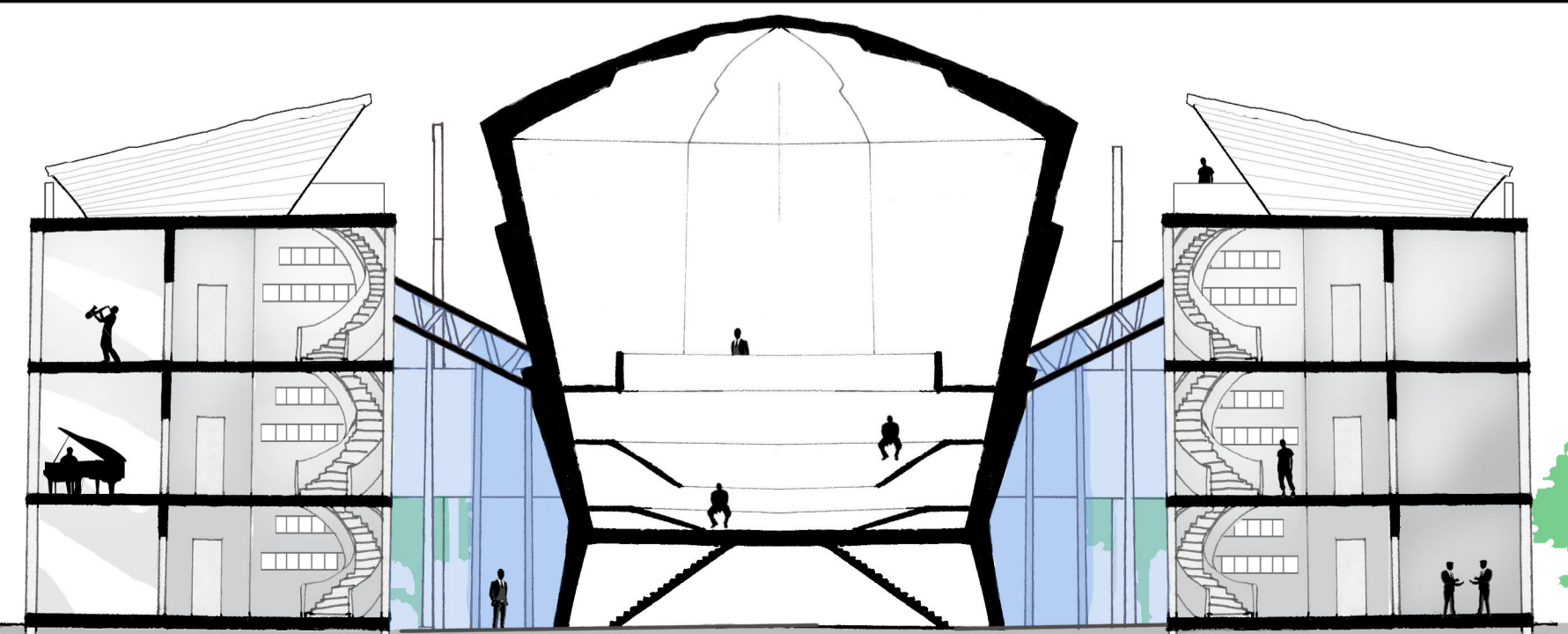
THE BUILDING CONSISTS OF THREE MAJOR COMPONENTS: THE **CENTRAL AUDITORIUM**, **LEFT WING** AND **RIGHT WING**. THE **GLASS ATRIUM** AROUND THE AUDITORIUM AND THE **BRIDGE** WHICH CONNECTS THE WINGS BRING THE THREE COMPONENTS TOGETHER. IN THIS PROJECT, THE DESIGN OF THE BUILDING IS SOMETHING NEW TO THE SURROUNDING. IT STRIVES TO PROJECT AN IMAGE OF ITS OWN: **THE MUSICAL SPACE**.



SITE PLAN



SECTION 1:200



ELEVATION 1:200

