

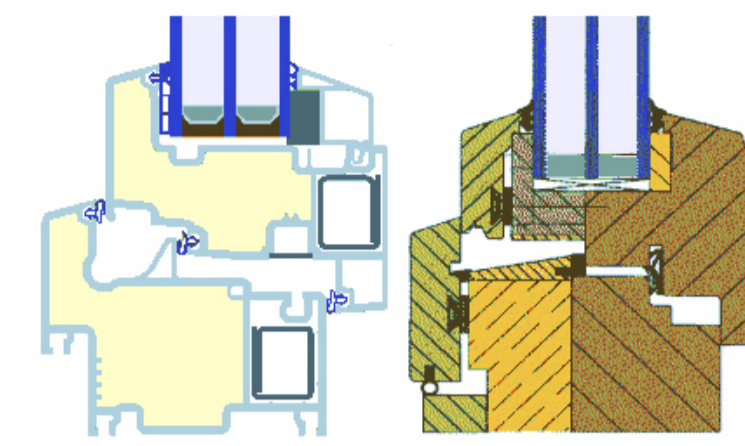
Madrid Performing Arts Centre

Chan Size Lok Reed 309002168

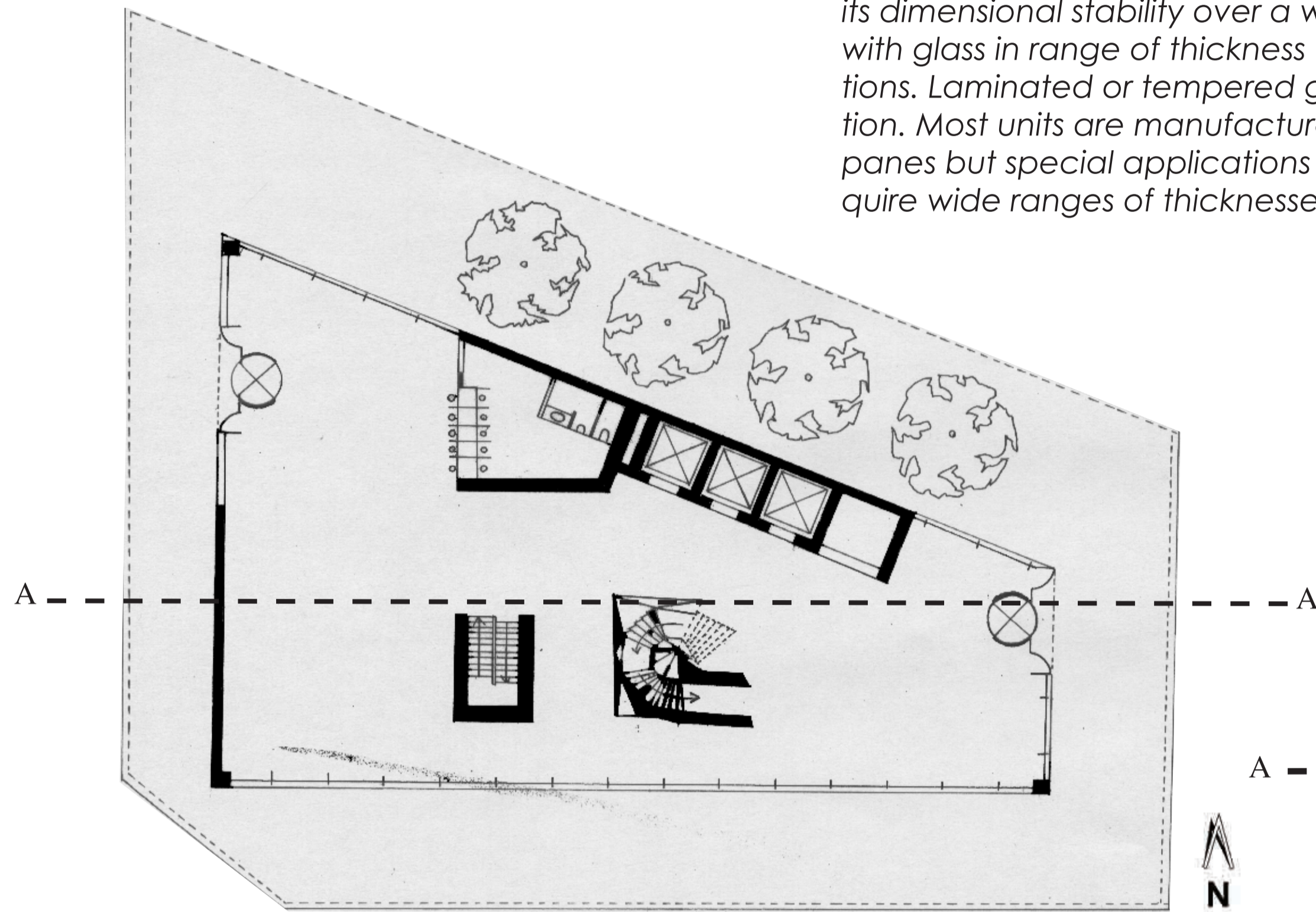
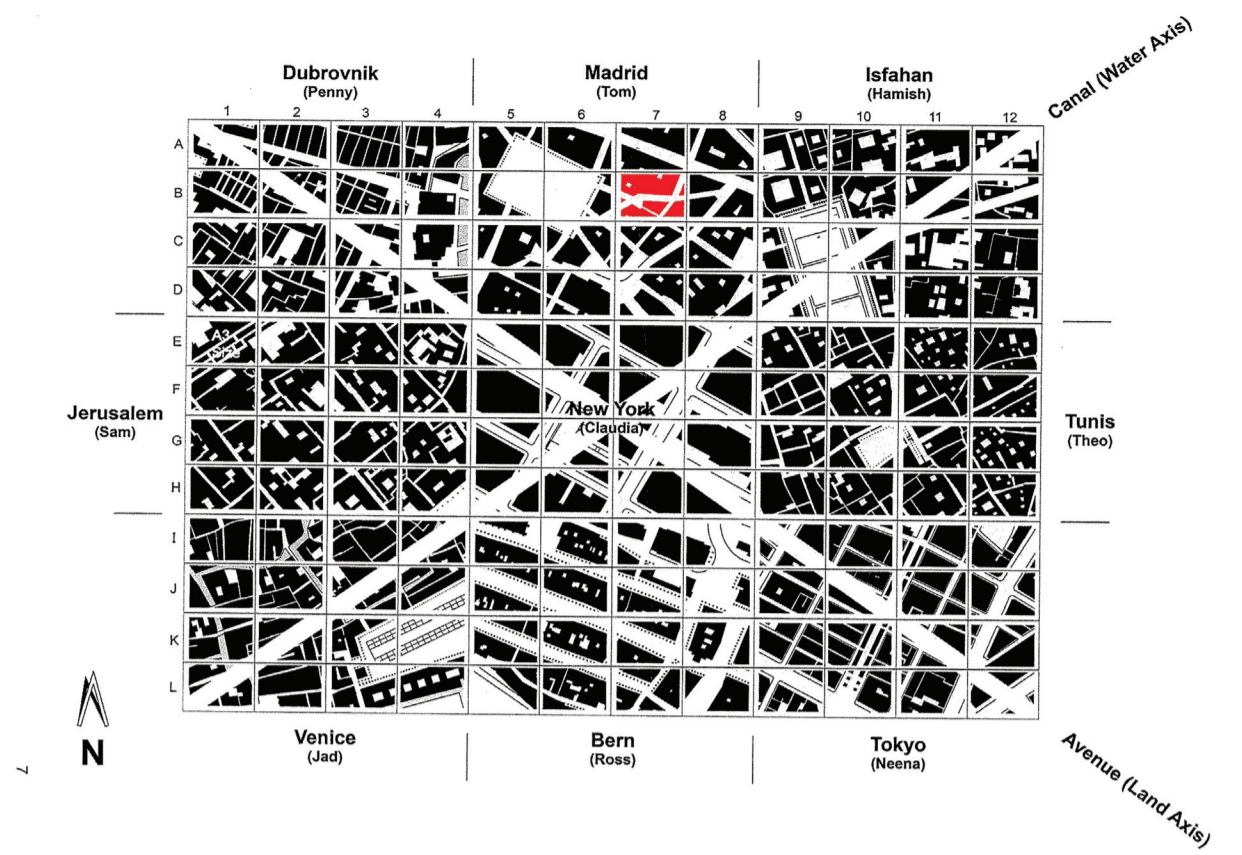
Floor Plans and Site Plans

Glass

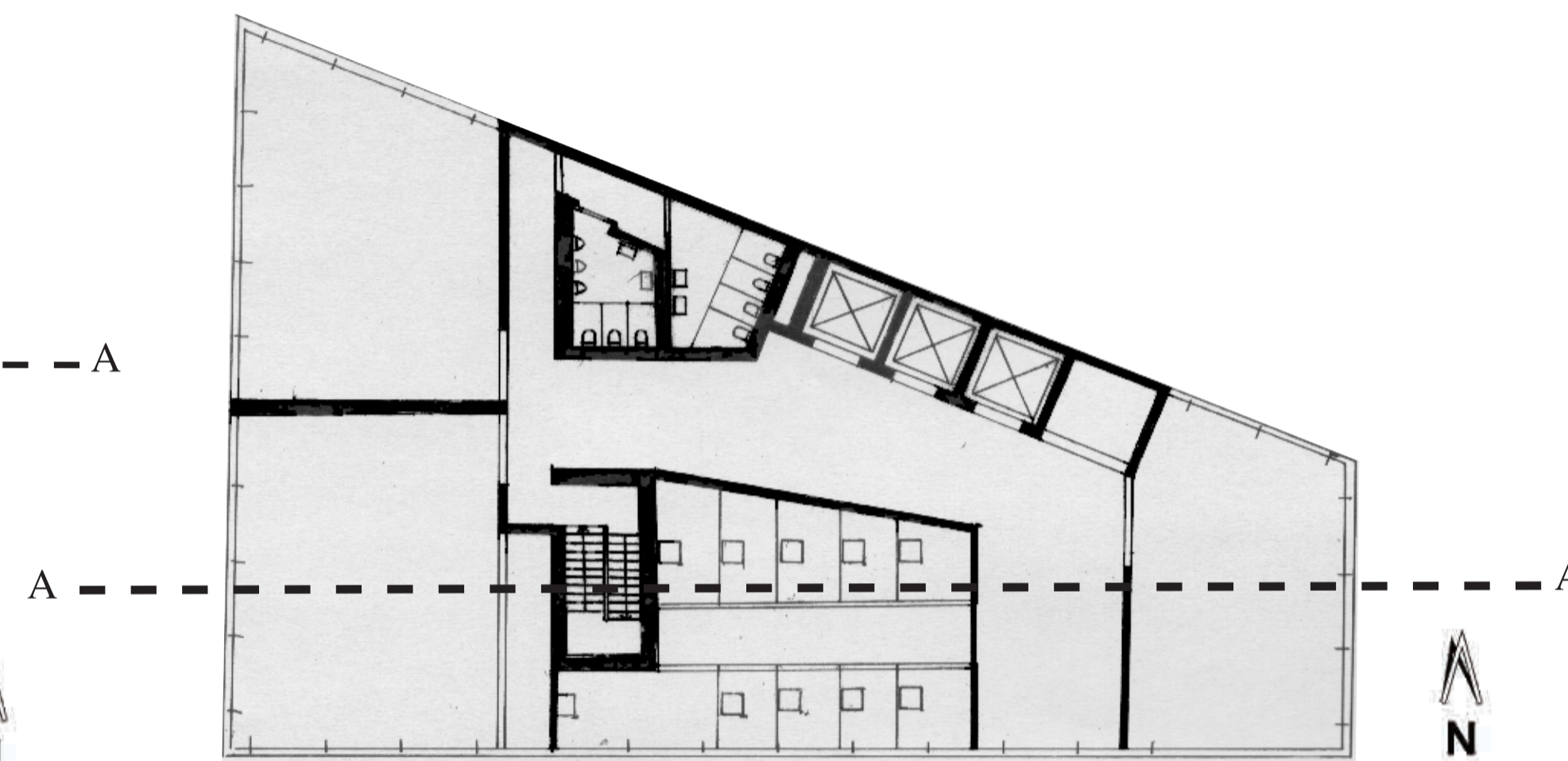
Glass is used to provide light and allow vision of things outside the place that is viewed from. While the composition and manufacturing of glass is covered elsewhere, for the purposes of this article, its importance to the construction is its dimensional stability over a wide temperature range. IGUs are manufactured with glass in range of thickness from 3 mm to 10 mm or more in special applications. Laminated or tempered glass may also be used as part of the construction. Most units are manufactured with the same thickness of glass used on both panes but special applications such as acoustic attenuation or security may require wide ranges of thicknesses to be incorporated in the same unit.



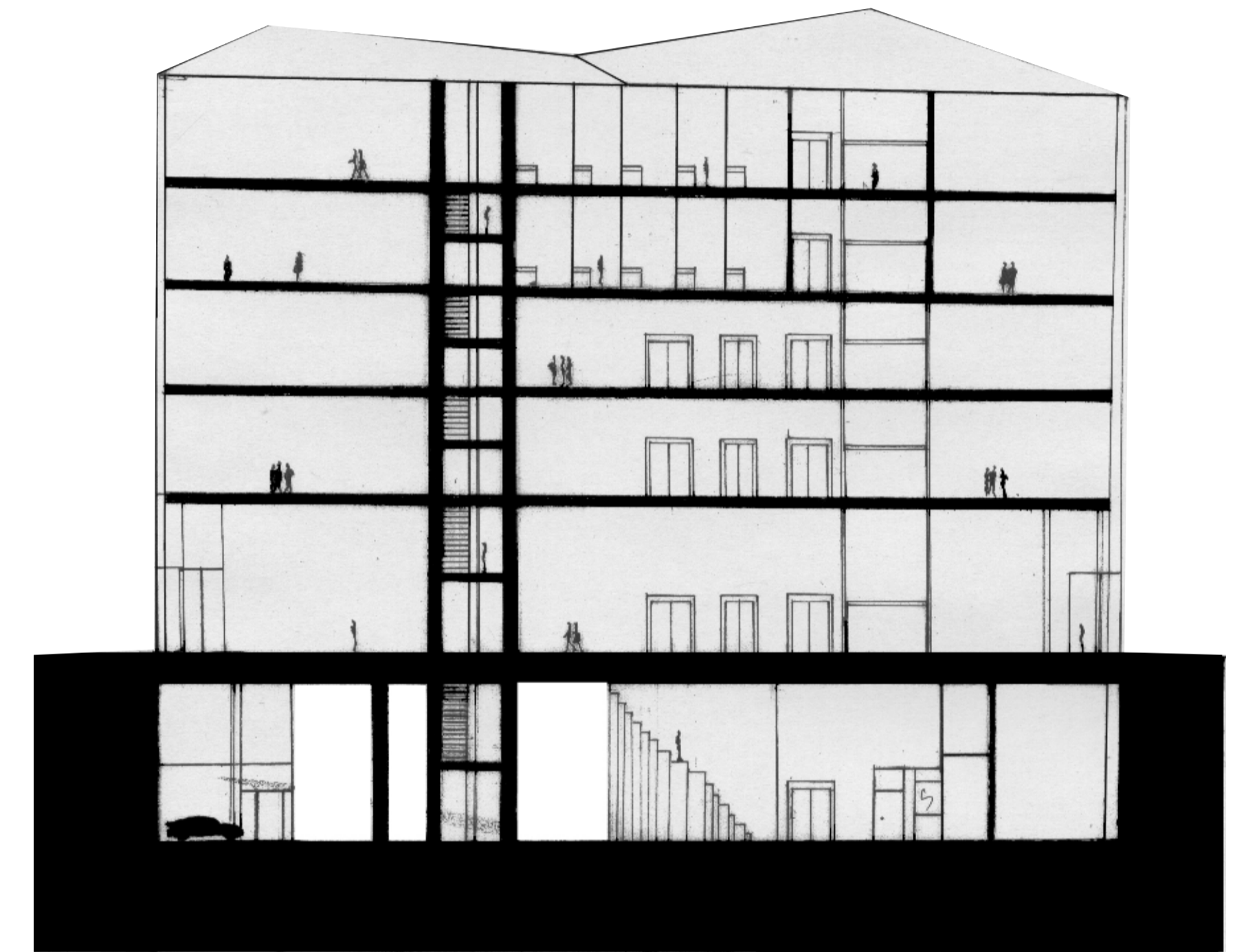
Window frame cutaway with triple pane insulated



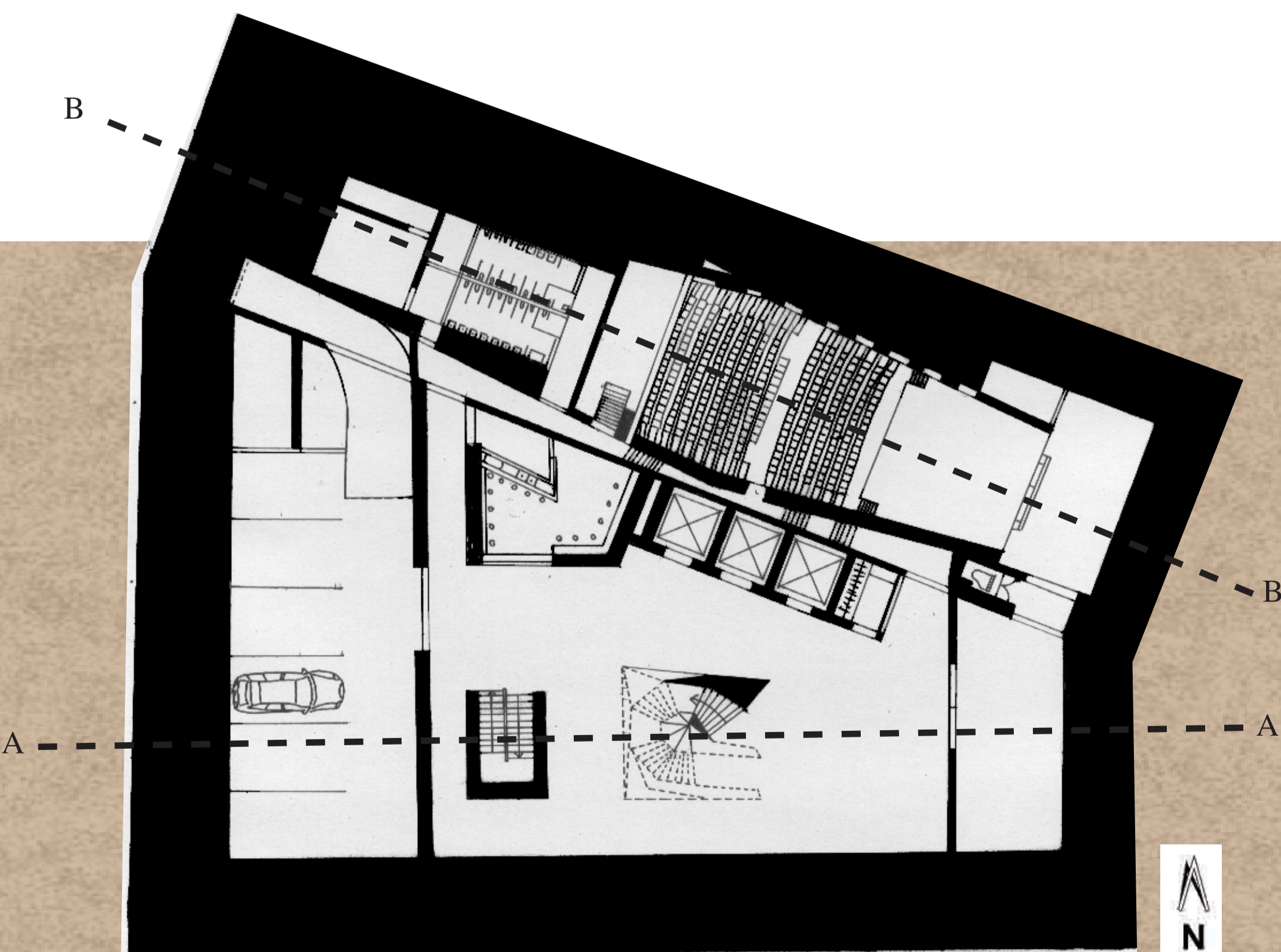
Ground Floor Plan



Level 3-4 Floor Plan 1:200



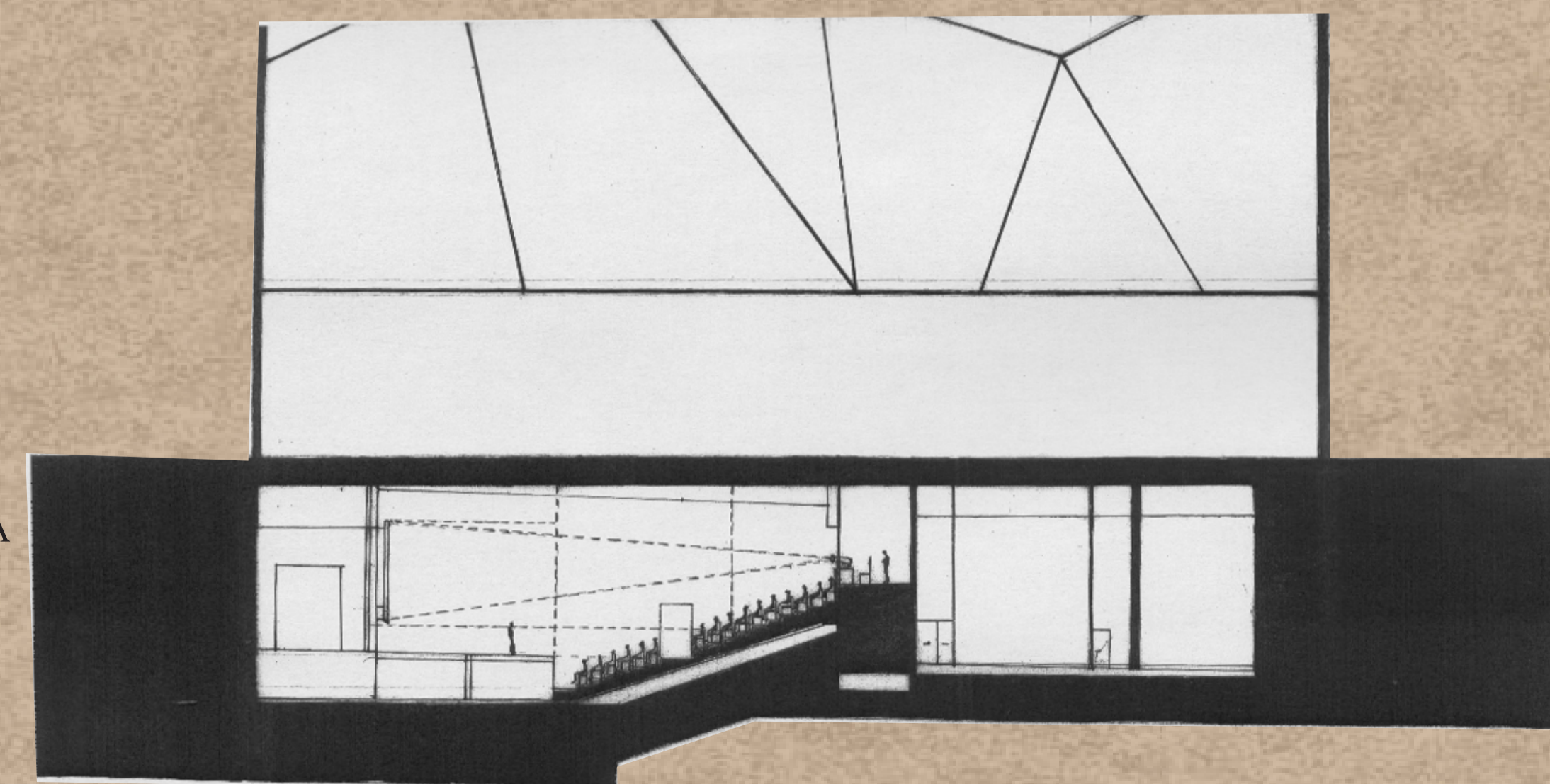
AA Section 1:200



Basement Floor Plan



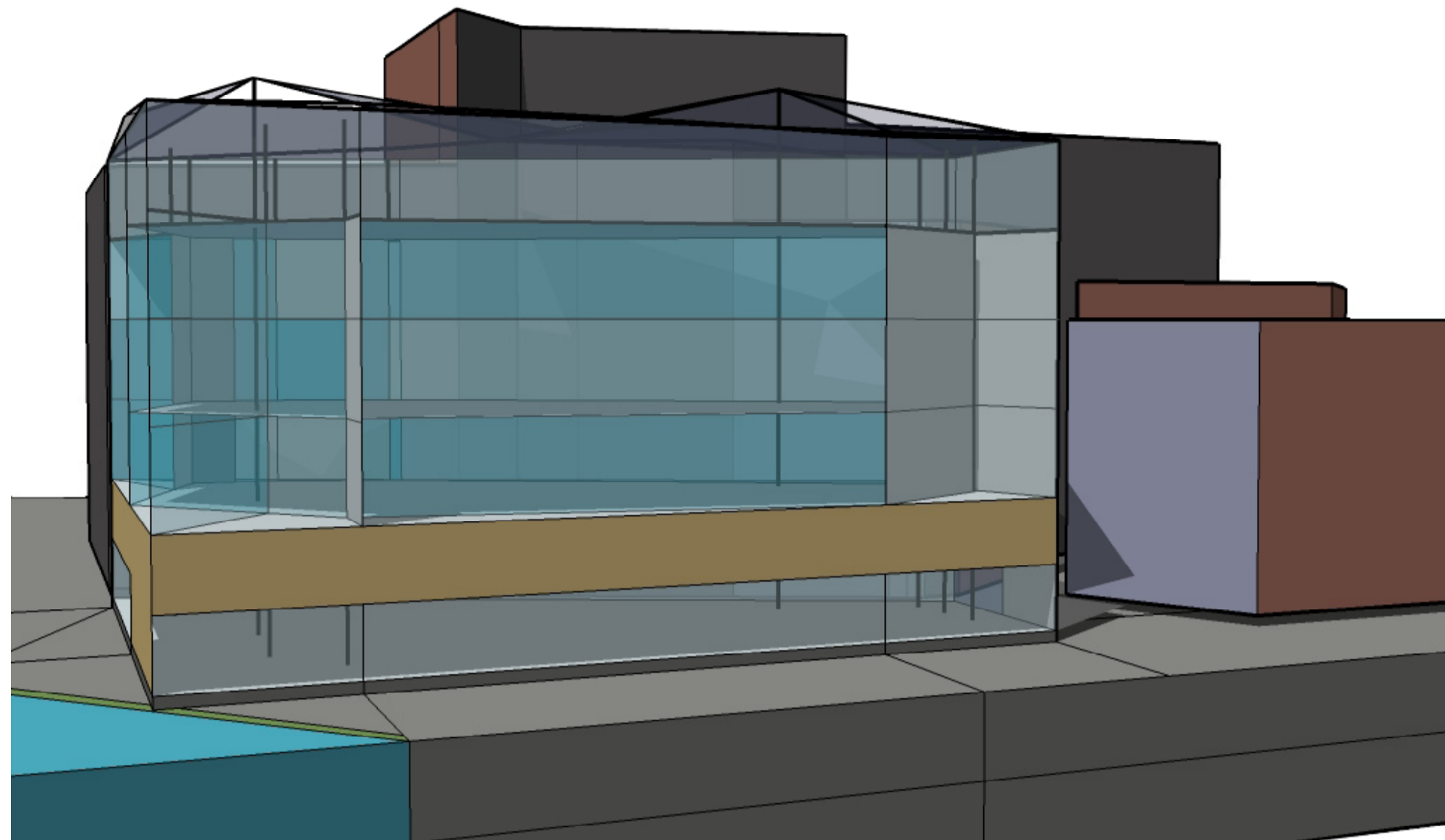
Level 1-2 Floor Plan 1:200



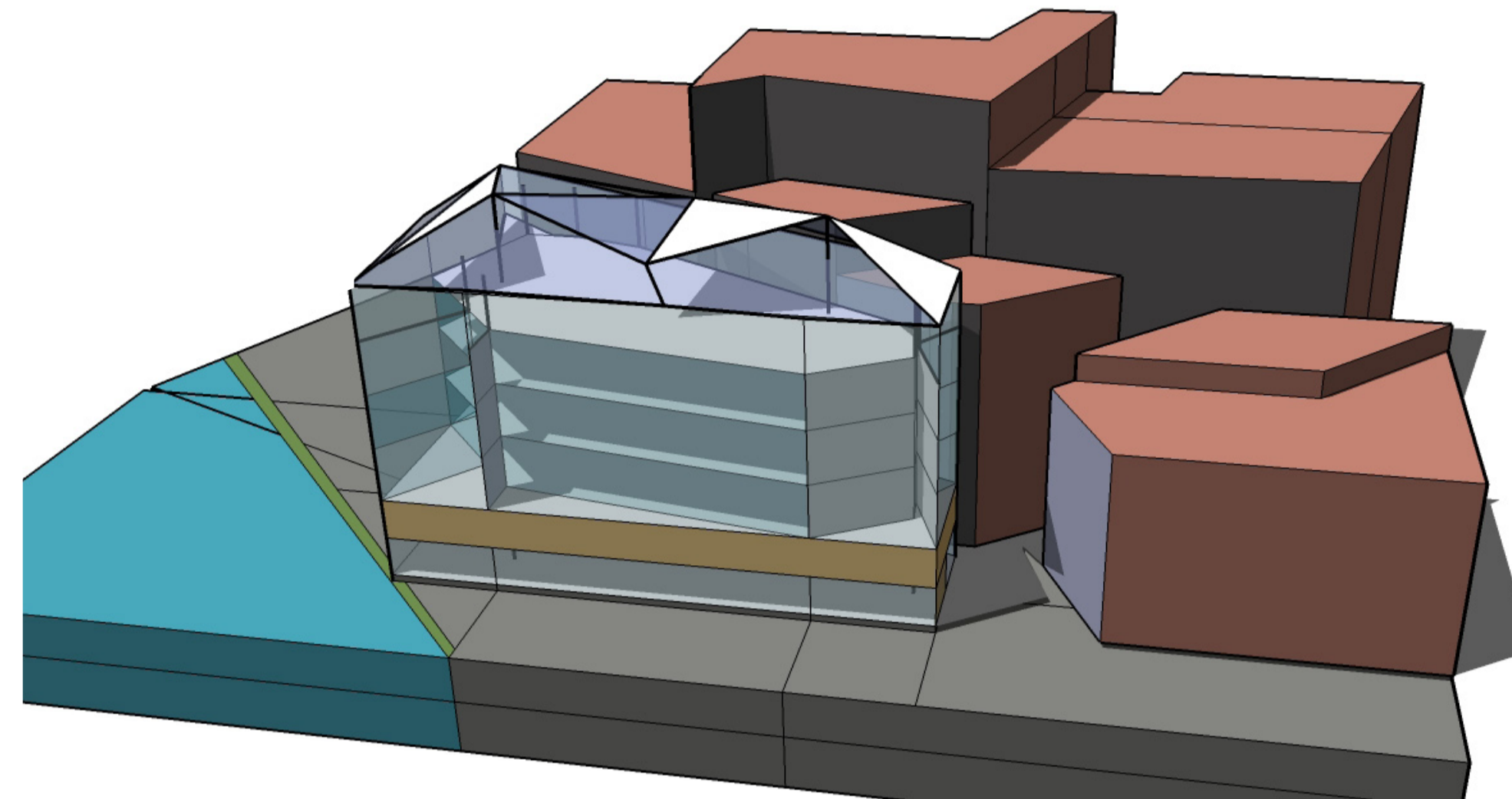
BB Section 1:200

Madrid Performing Arts Centre

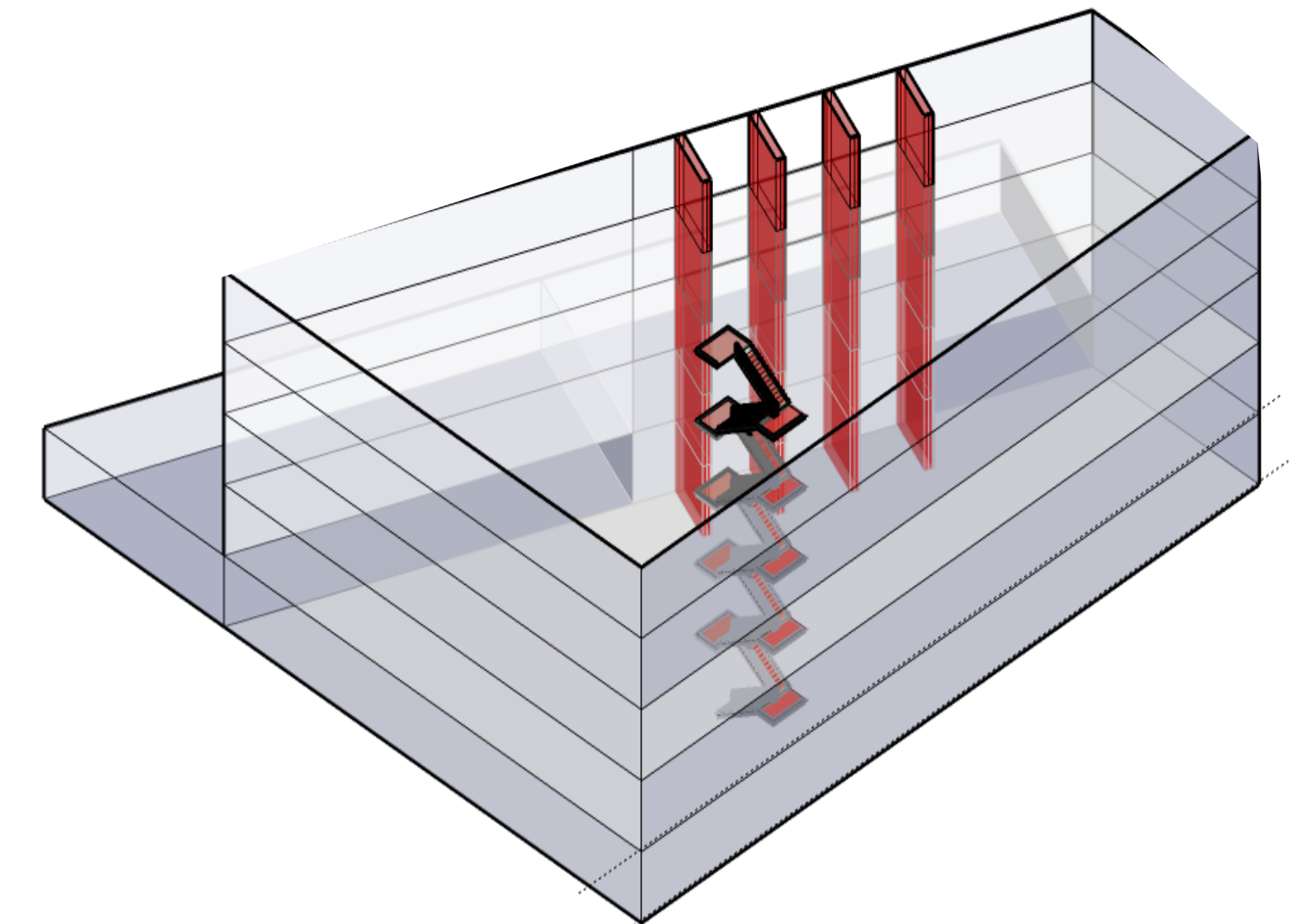
Chan Sze Lok Reed 309002168



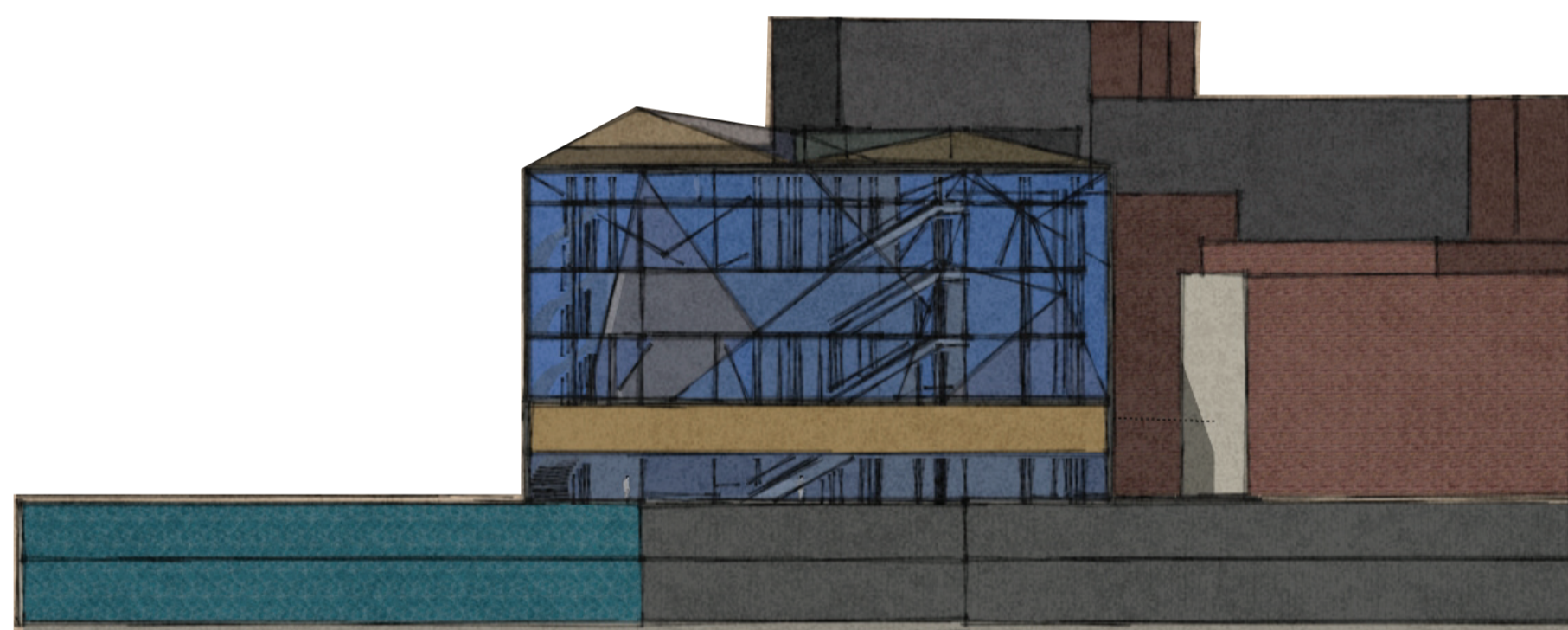
3D Modelling Rendering A



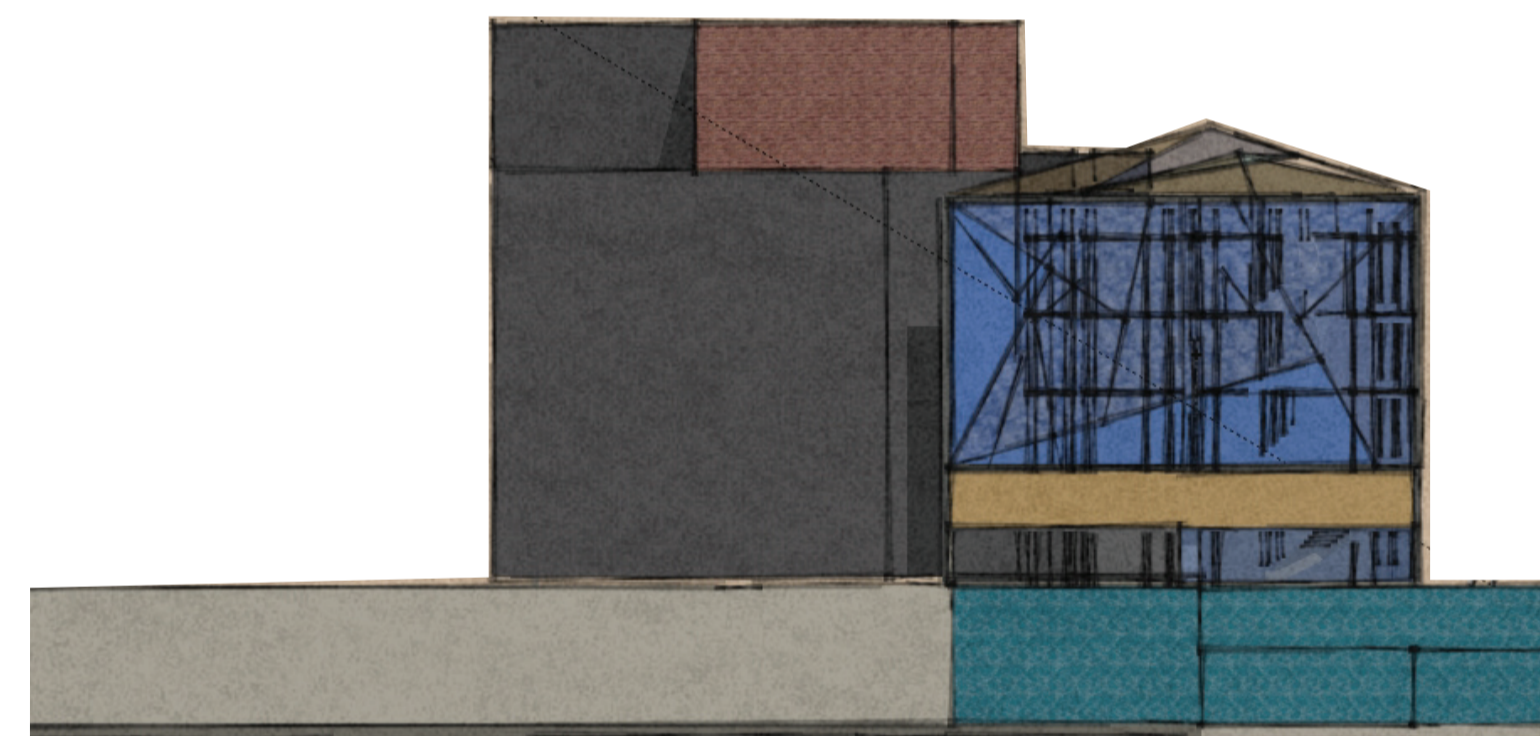
3D Modelling Rendering B



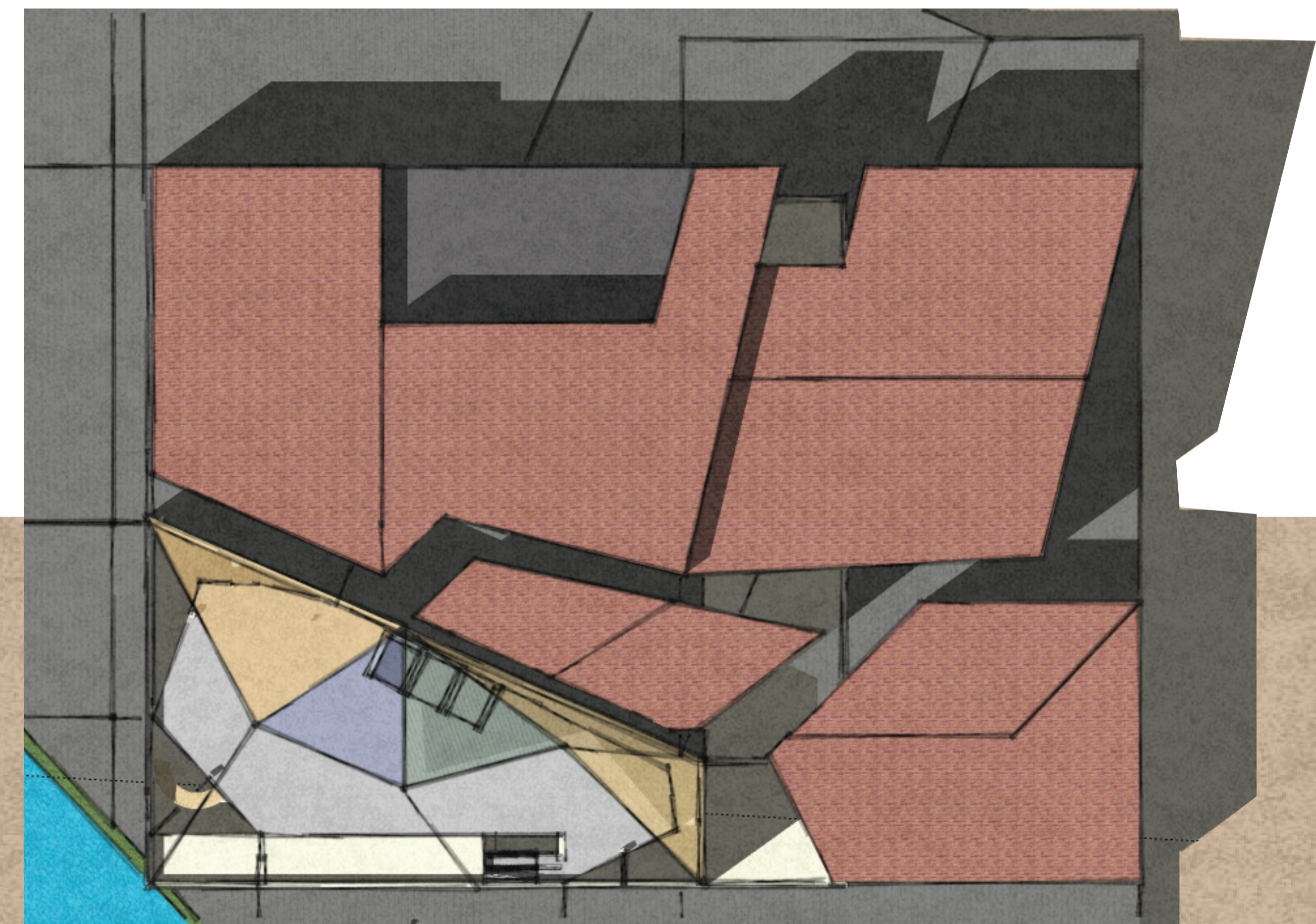
Circulation Diagram



North Elevation



West Elevation



Aerial Plan

The performing arts are those forms of art which differ from the plastic arts insofar as the former uses the artist's own body, face, and presence as a medium, and the latter uses materials such as clay, metal or paint, which can be molded or transformed to create some physical art object.

Performing arts include the dance, music, opera, drama, and circus arts.

National Auditorium of Music is the main venue for classical music concerts in Madrid, is home to the Spanish National Orchestra and few famous Orchestra in Spain. I considered that in Madrid, there is only a place to provide a platform for performing art artistes. Thus I have decided to build a Performing Arts Centre. My building sits on near a cancel and the Plazas, where the large number of population flow. Within this busy and complicate city this Performing Arts Centre will be the place to relax.