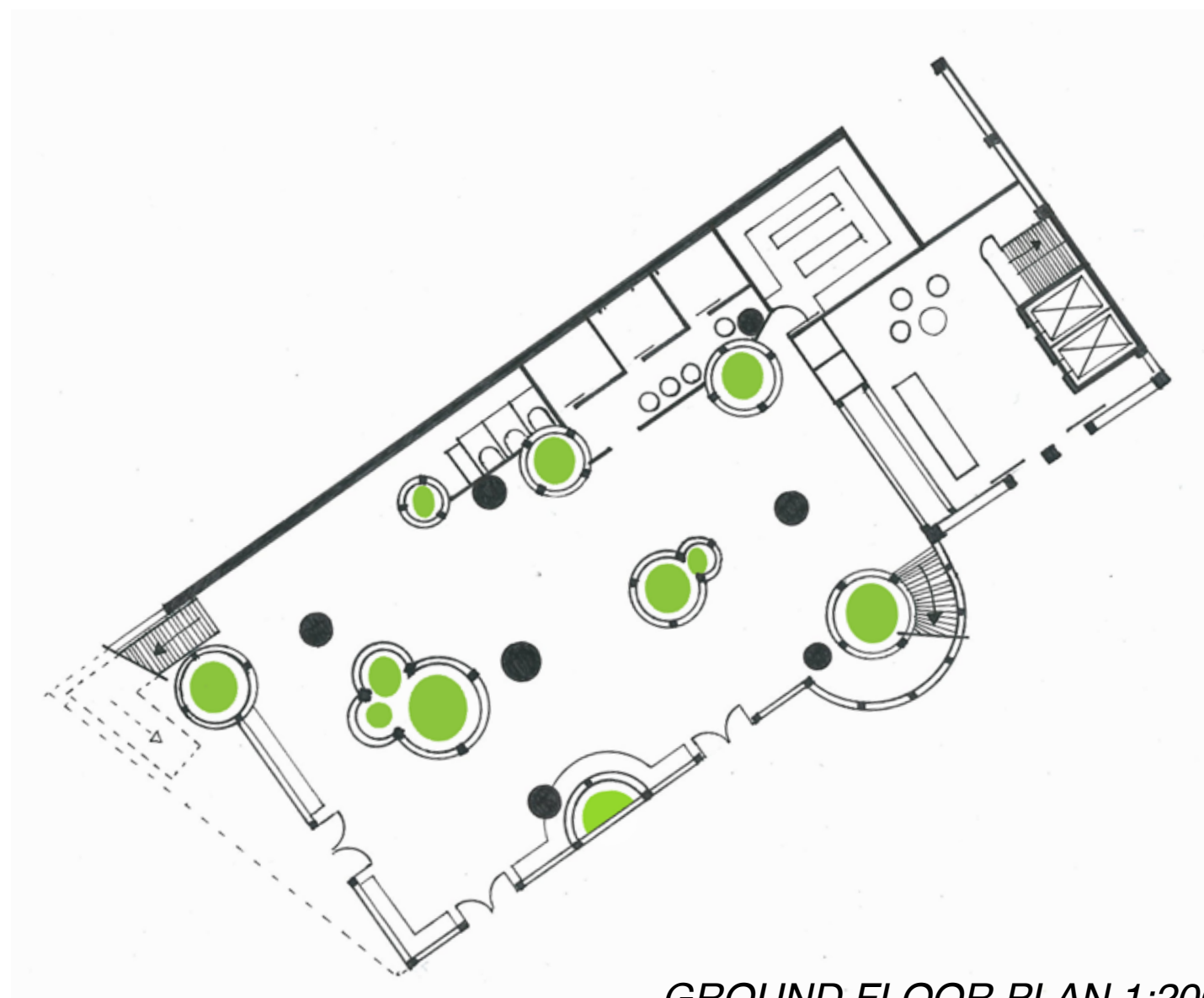
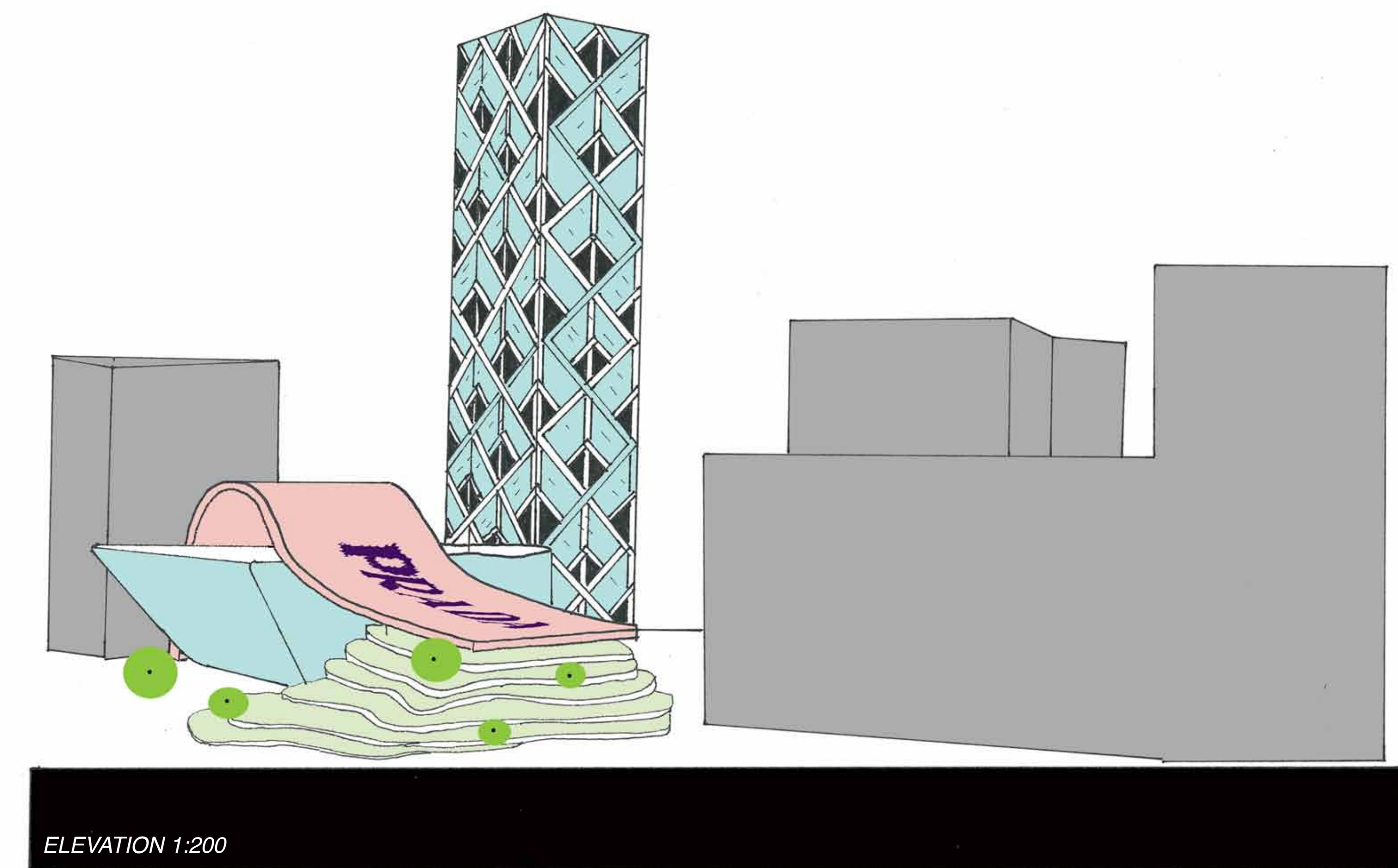


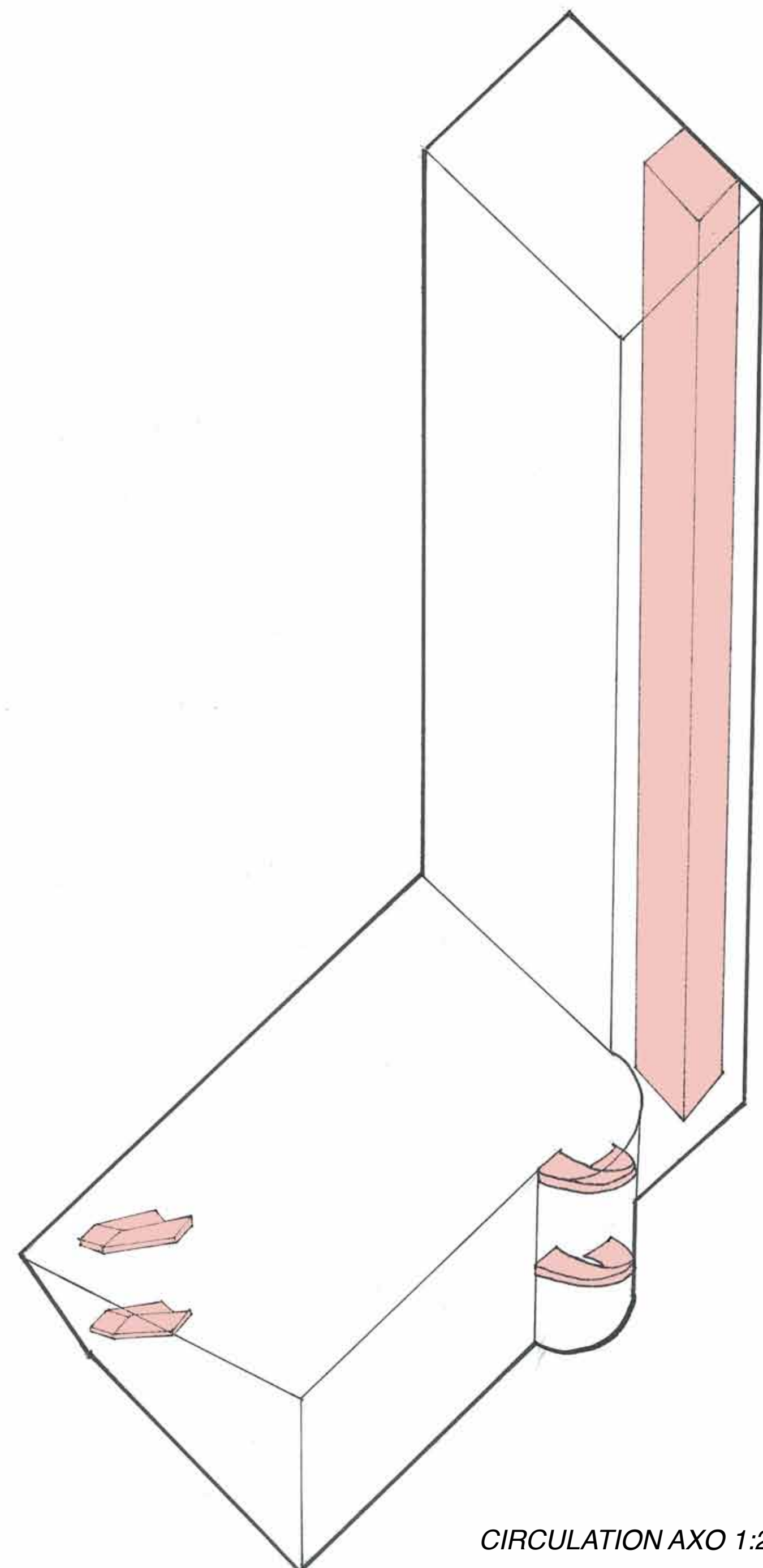
AERIAL PLAN 1:200



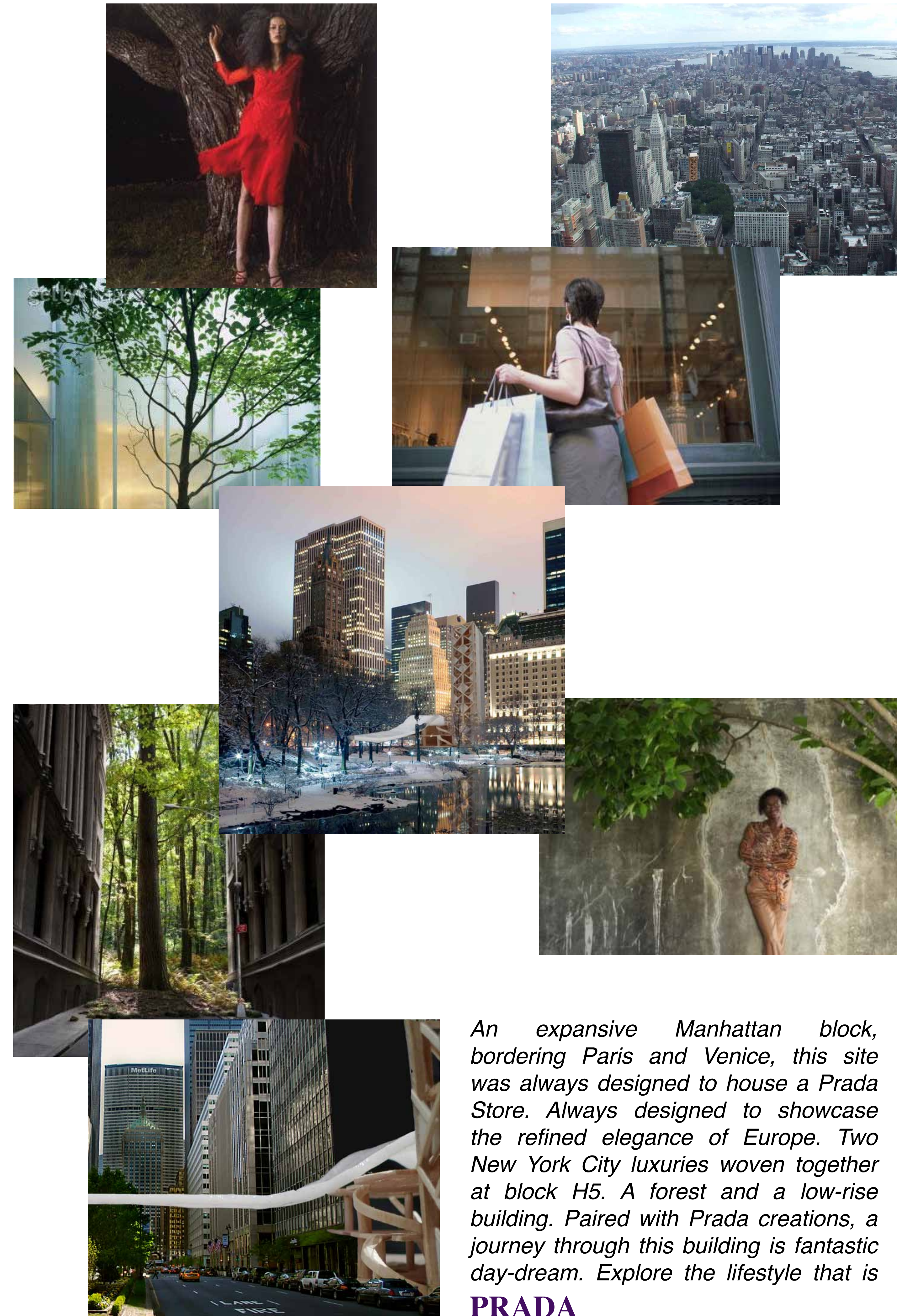
GROUND FLOOR PLAN 1:200



ELEVATION 1:200



CIRCULATION AXO 1:200



An expansive Manhattan block, bordering Paris and Venice, this site was always designed to house a Prada Store. Always designed to showcase the refined elegance of Europe. Two New York City luxuries woven together at block H5. A forest and a low-rise building. Paired with Prada creations, a journey through this building is fantastic day-dream. Explore the lifestyle that is

PRADA