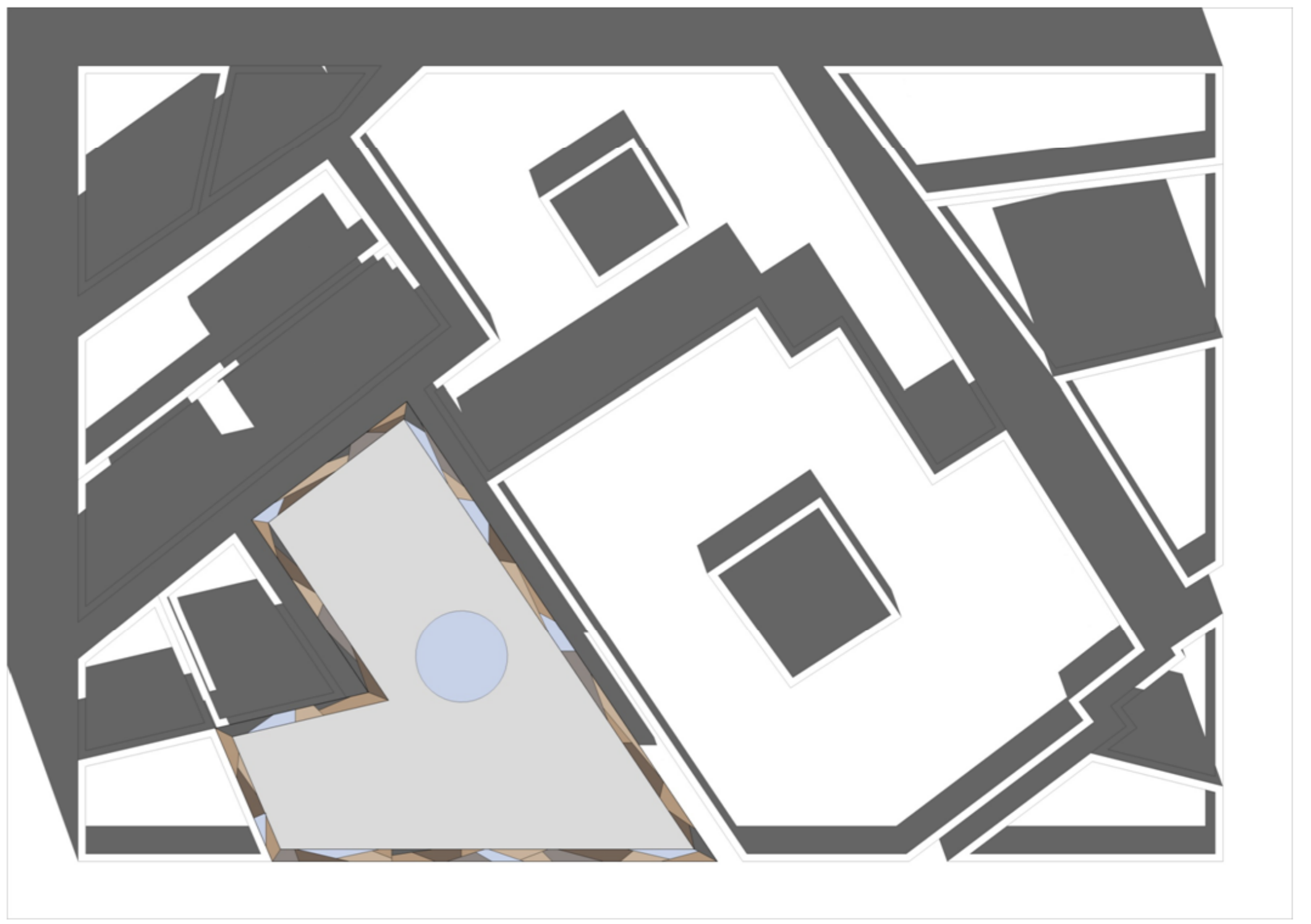




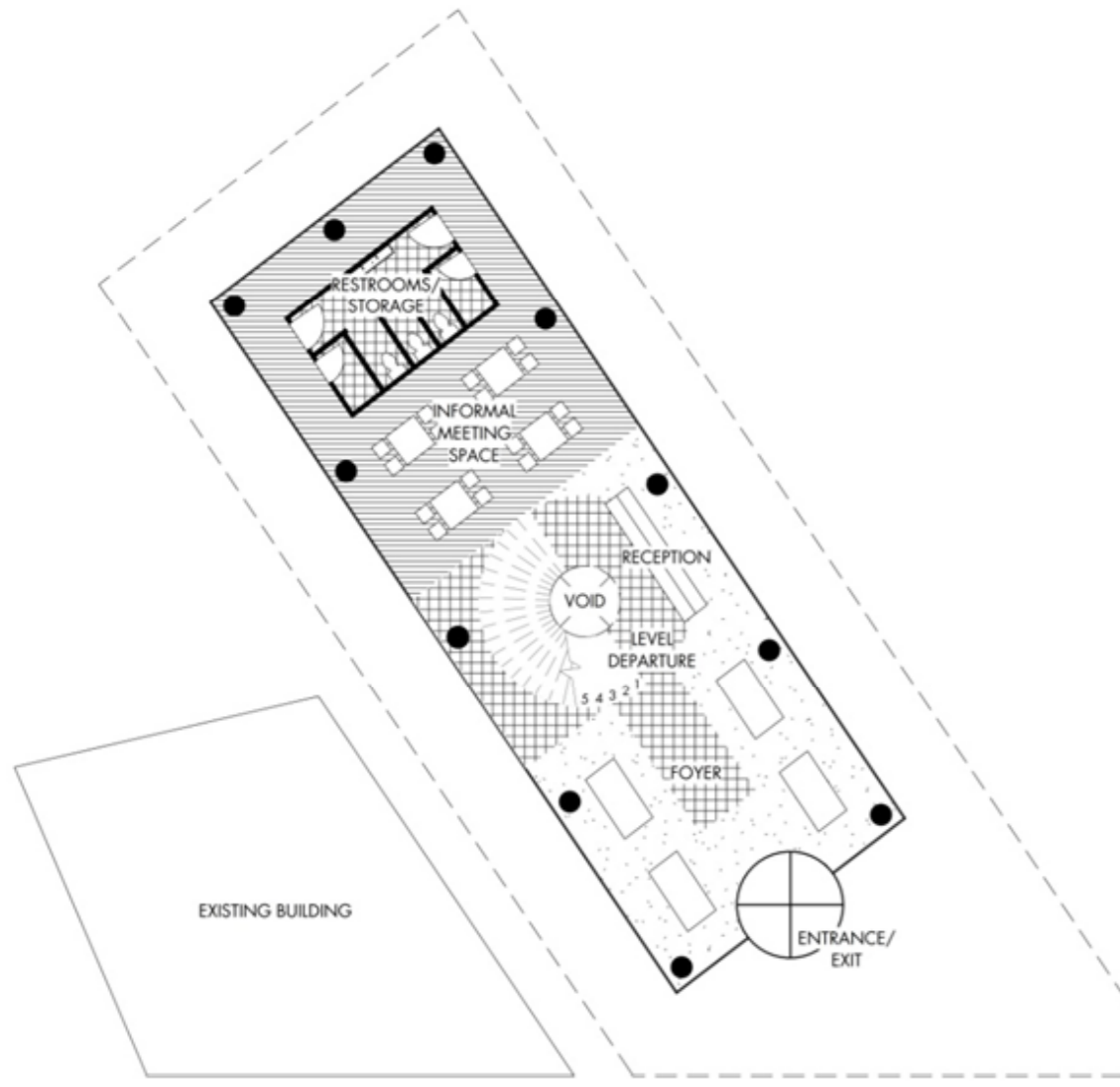
Continuous City Location Plan



Tunis Location Plan - H15



Site Plan 1:300



Ground Floor Plan 1:200

Foreword

This five-floor office block has been designed for creative professionals located in the southern district of Tunis' medina.

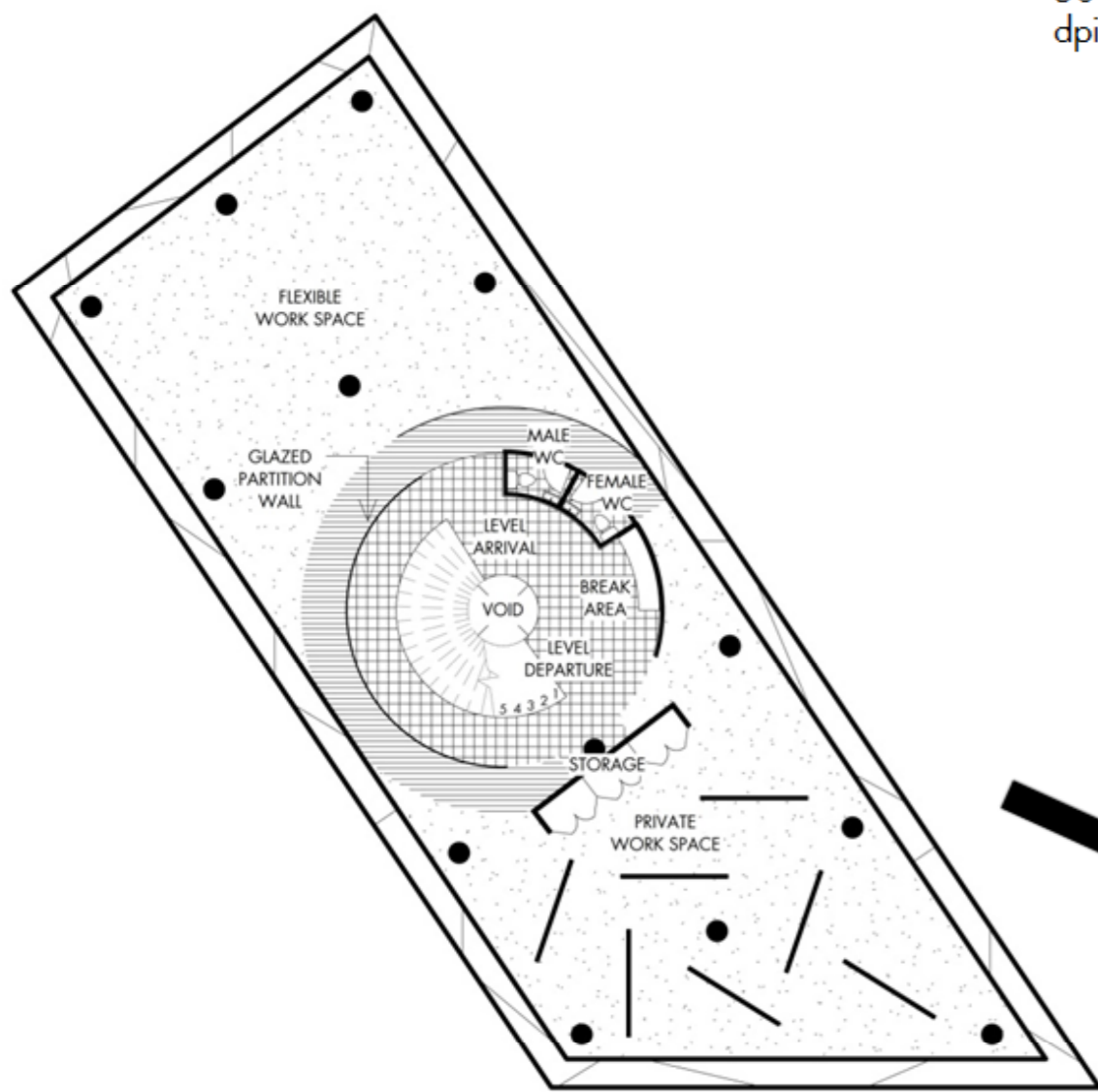
It features an atrium to the full height of the five floors, a vertical space naturally illuminated by a roof light transforming the space into a glowing well. This open space is the nucleus or 'central eye' of the whole structure with both private and semi-private offices arranged around it.

The offices are defined visually + physically with the private offices having numerous randomised walls, while the semi-private spaces are much more open encouraging user interaction.

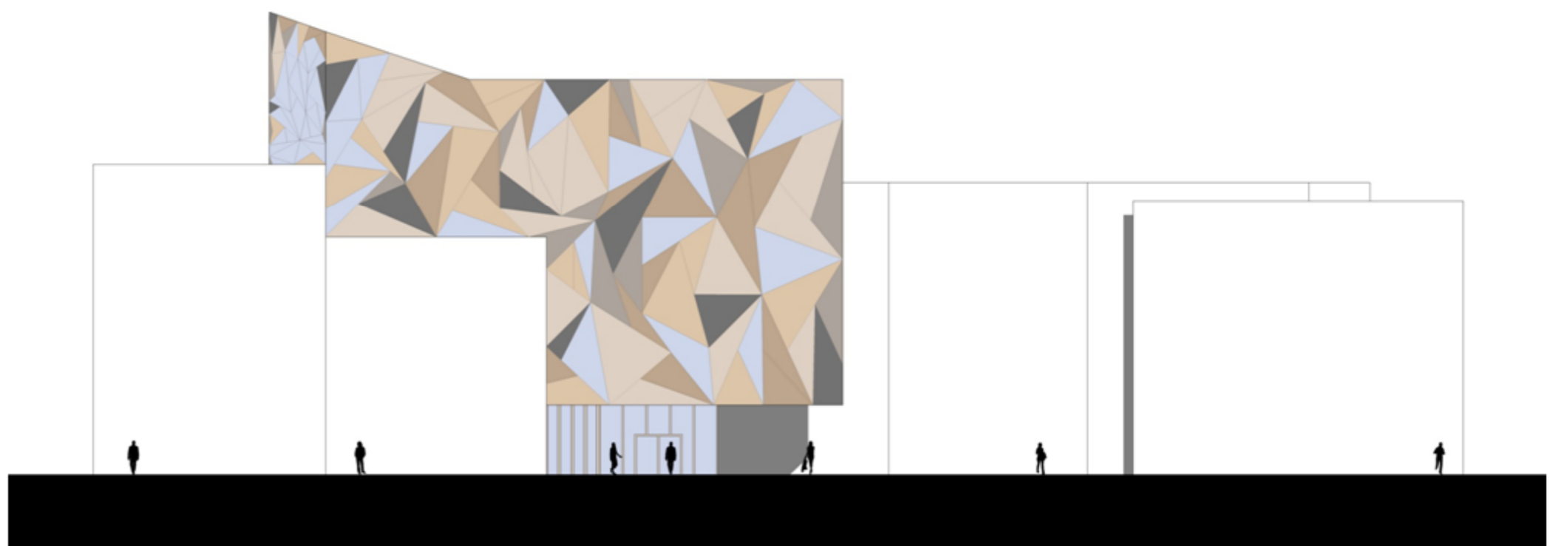
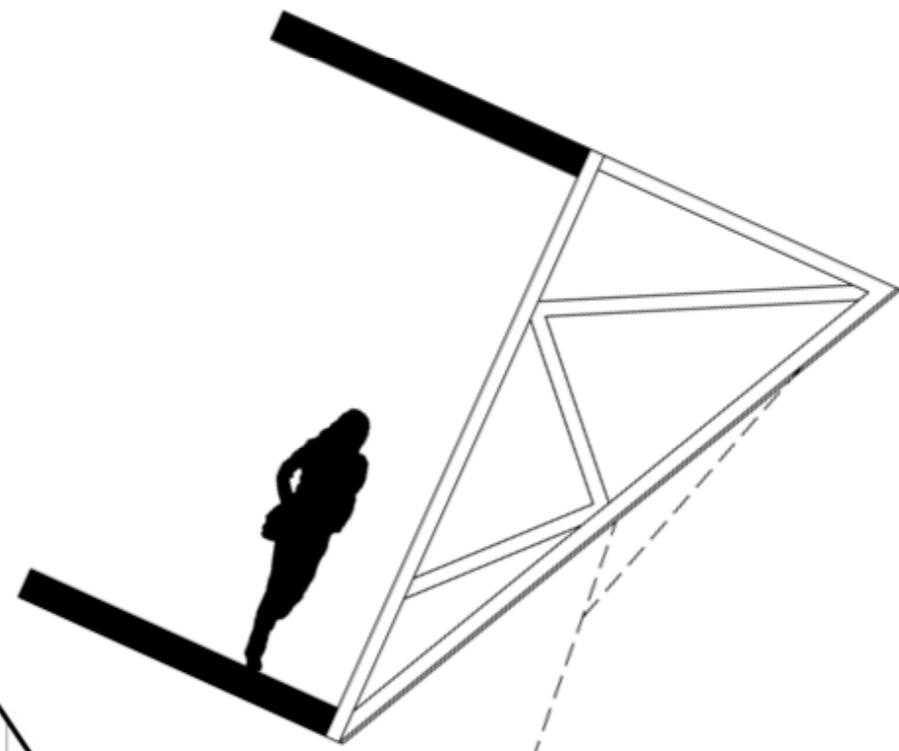
Situated within Tunis' tight alleys, the street level plan has been recessed from the upper stories of the building providing added circulation space around the building, offering a pleasant frontage to the adjacent street.

The building envelope, resembling a three dimensional mosaic symbolises the dynamic nature of Tunis' streets and detracts somewhat from the overall rectilinear form of the building. It provides a beautiful contrast over the existing and new, Tunis' past and present.

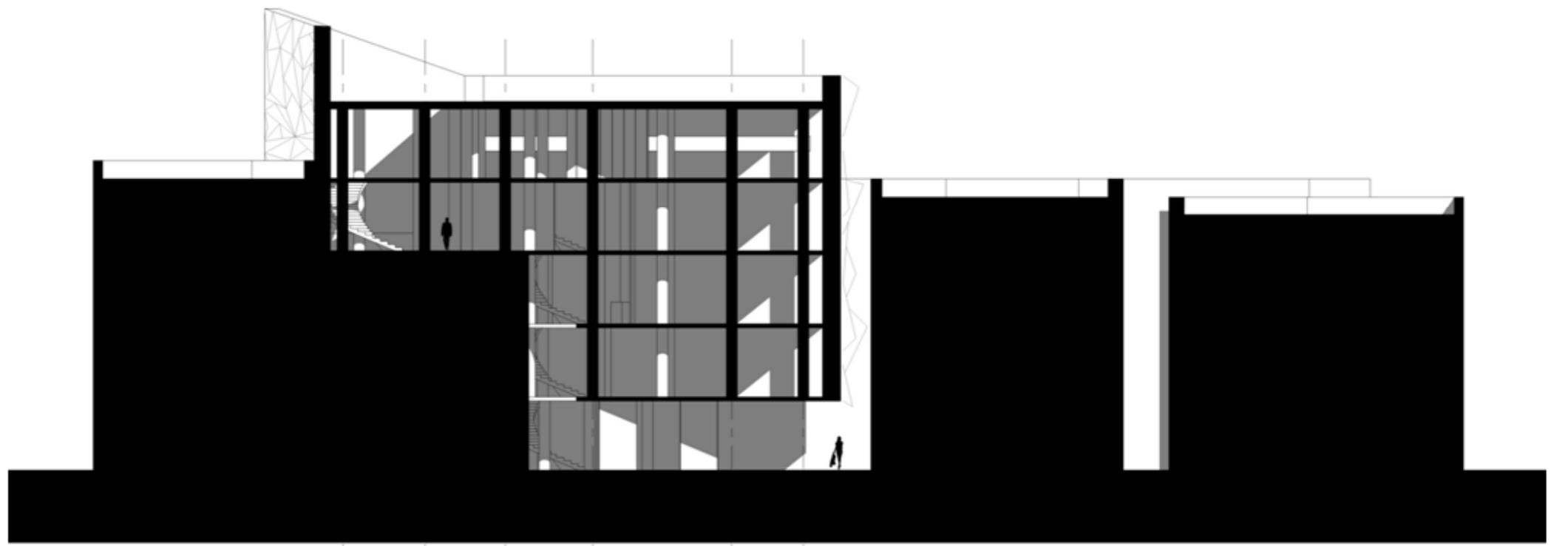
Drew Pinazza
309239265
dpin4931@uni.sydney.edu.au



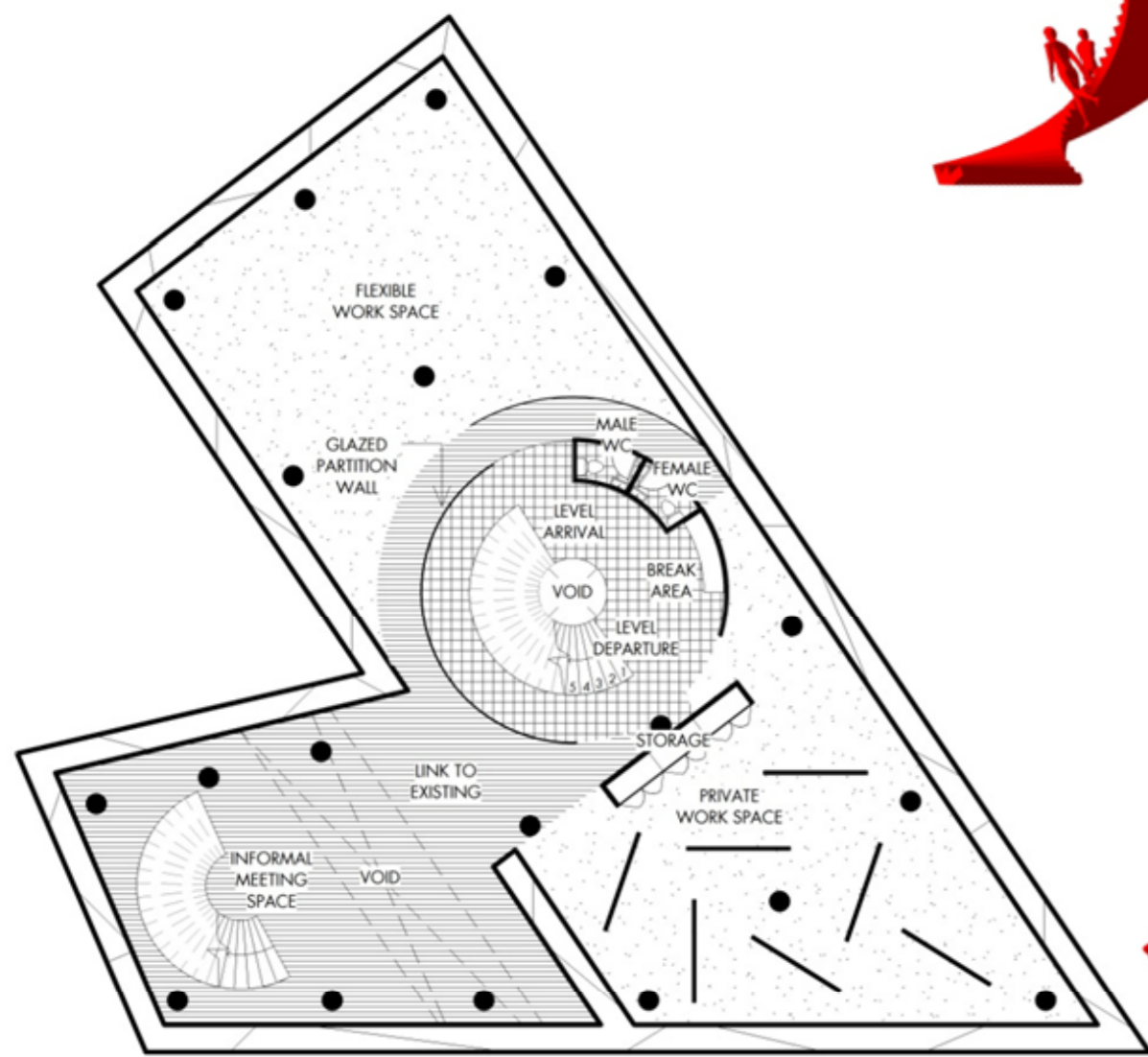
Level Two Floor Plan 1:200



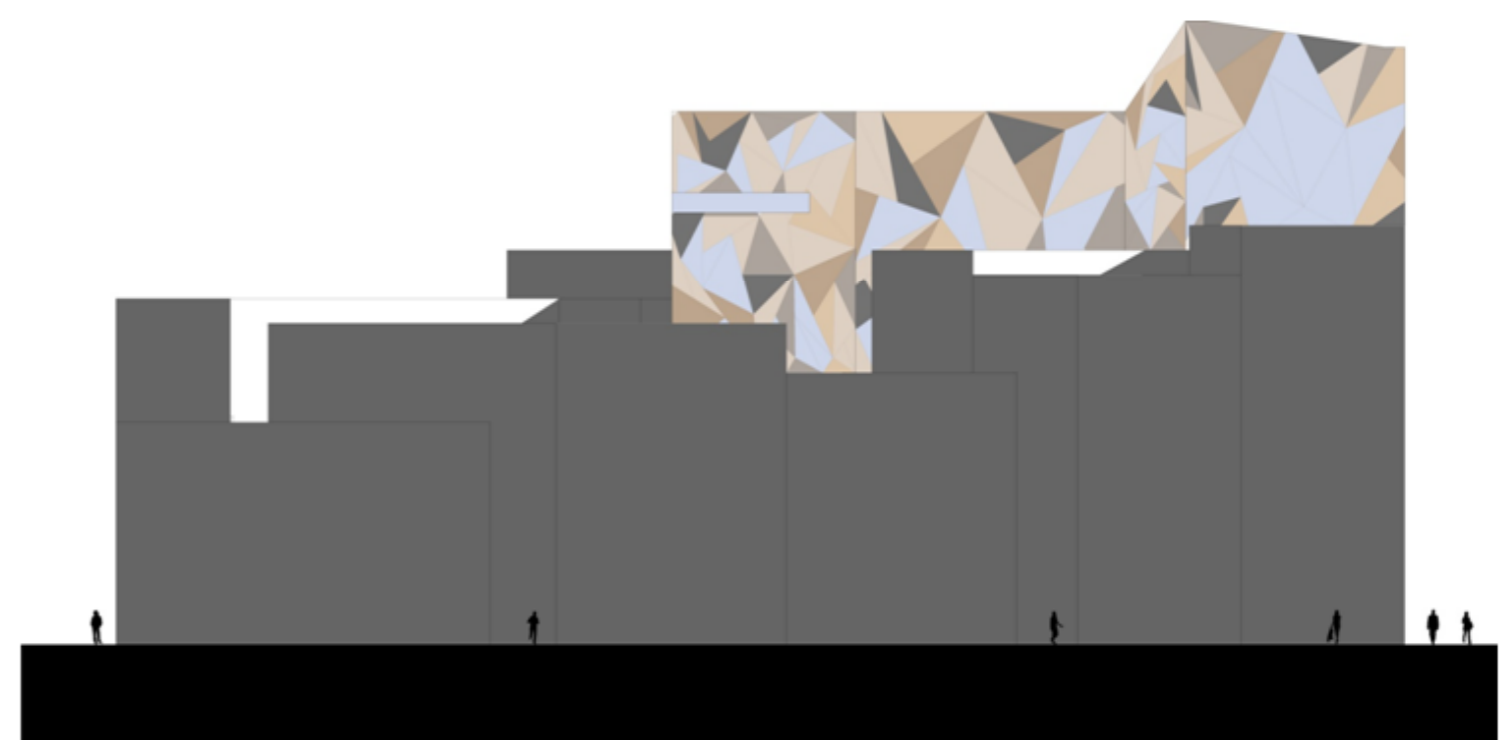
South Elevation 1:300



Site Section 1:300



Level Three Floor Plan 1:200



West Elevation 1:300

H15 Creative Office, Tunis

