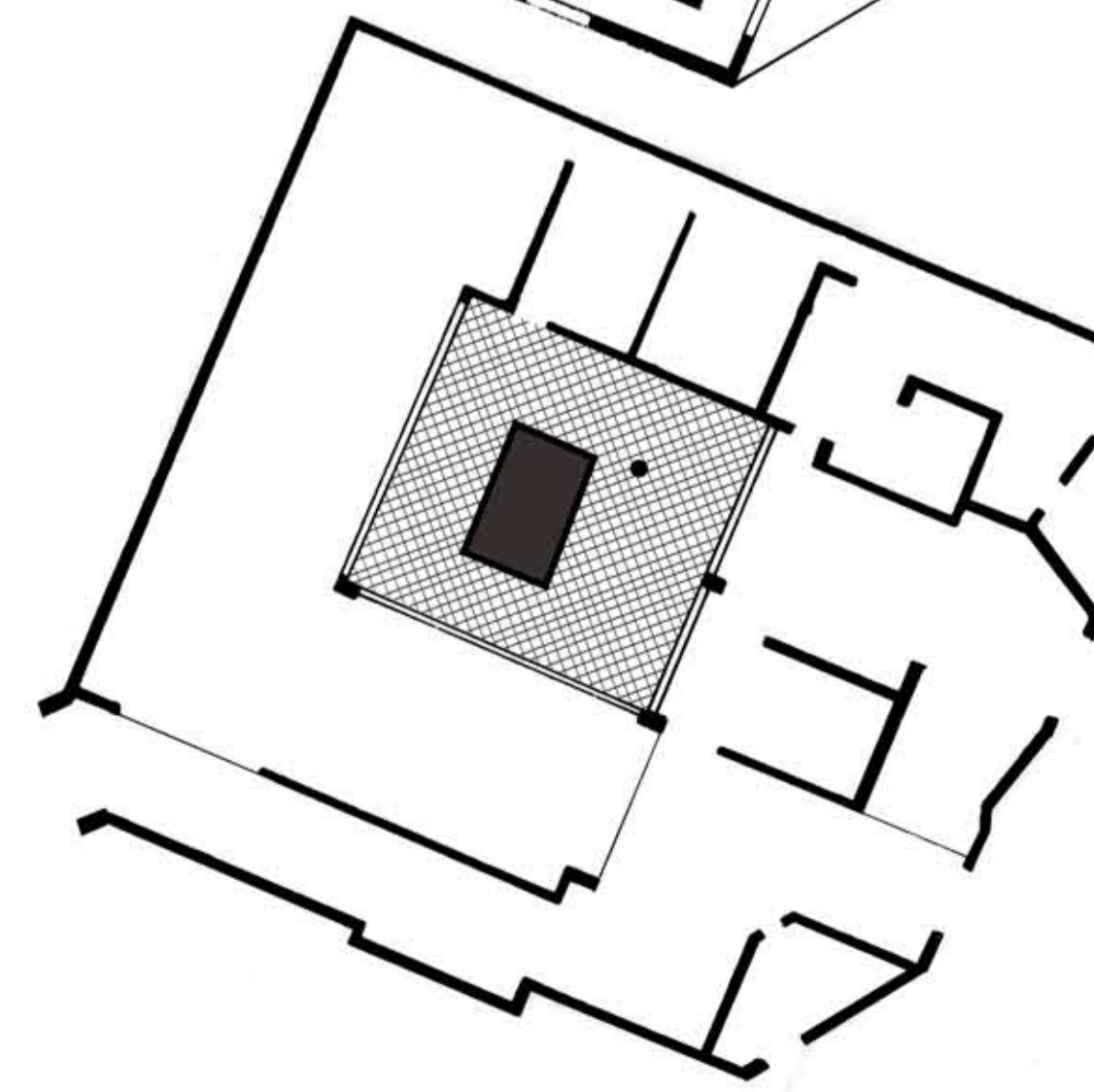
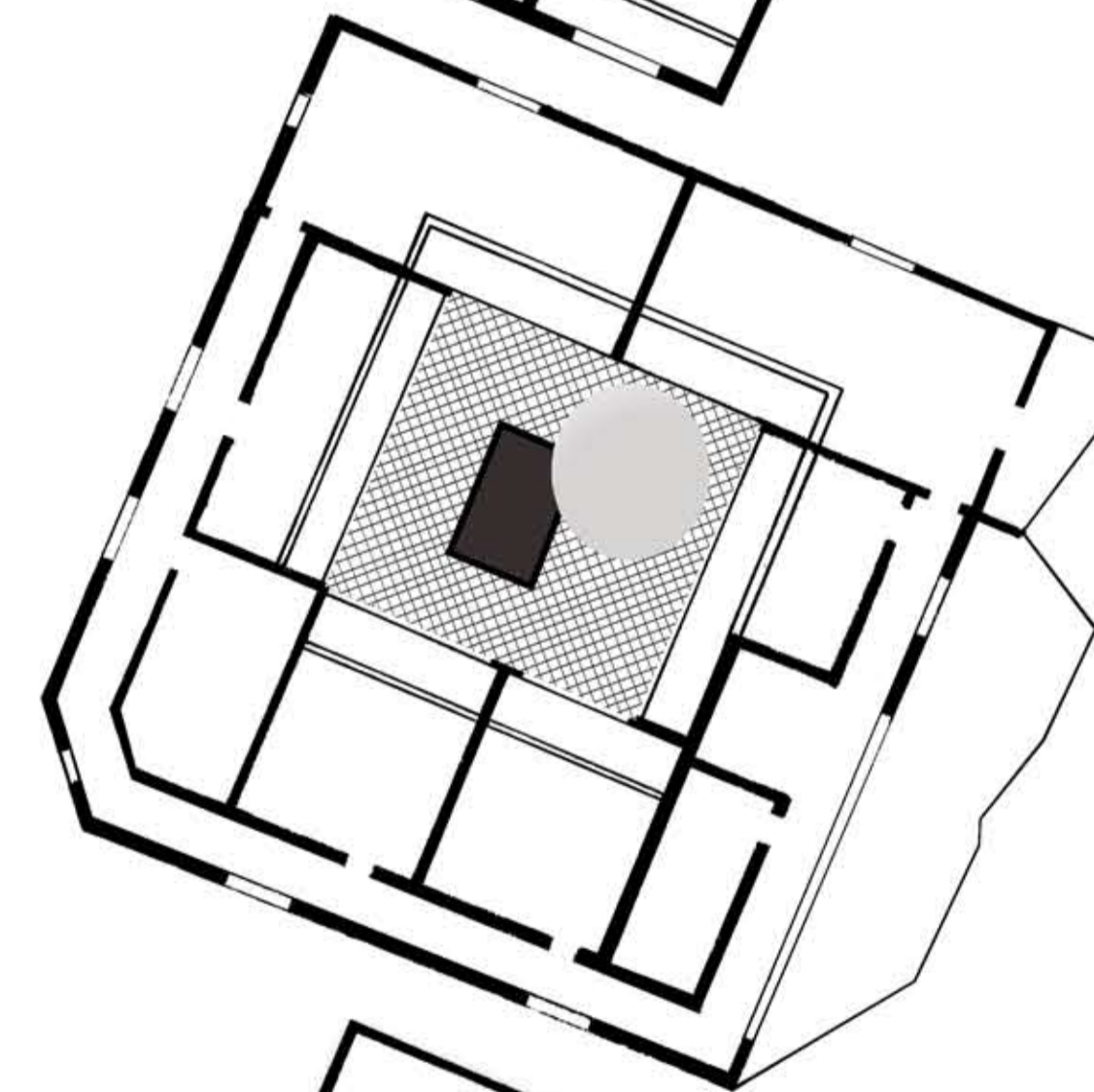
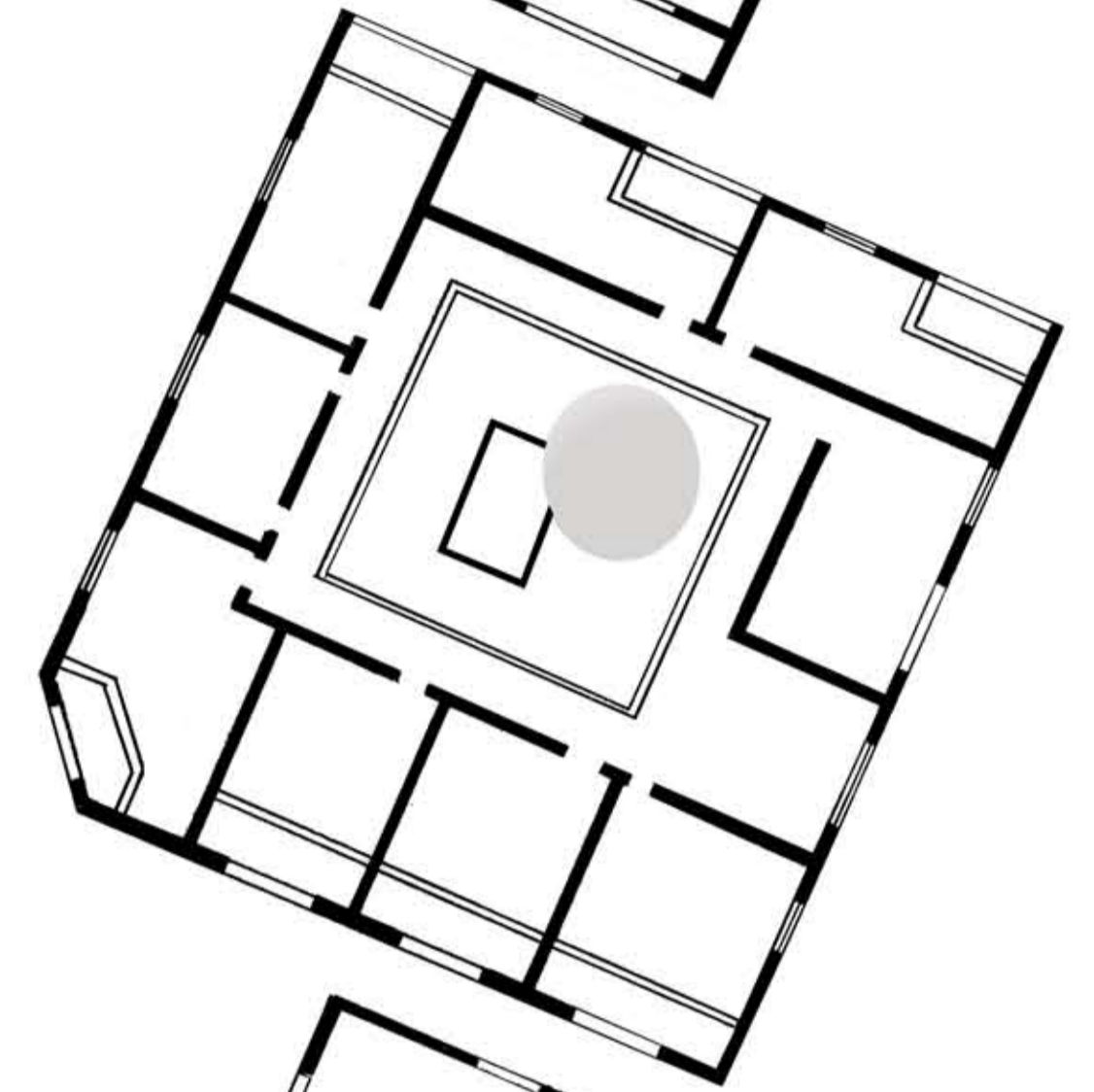
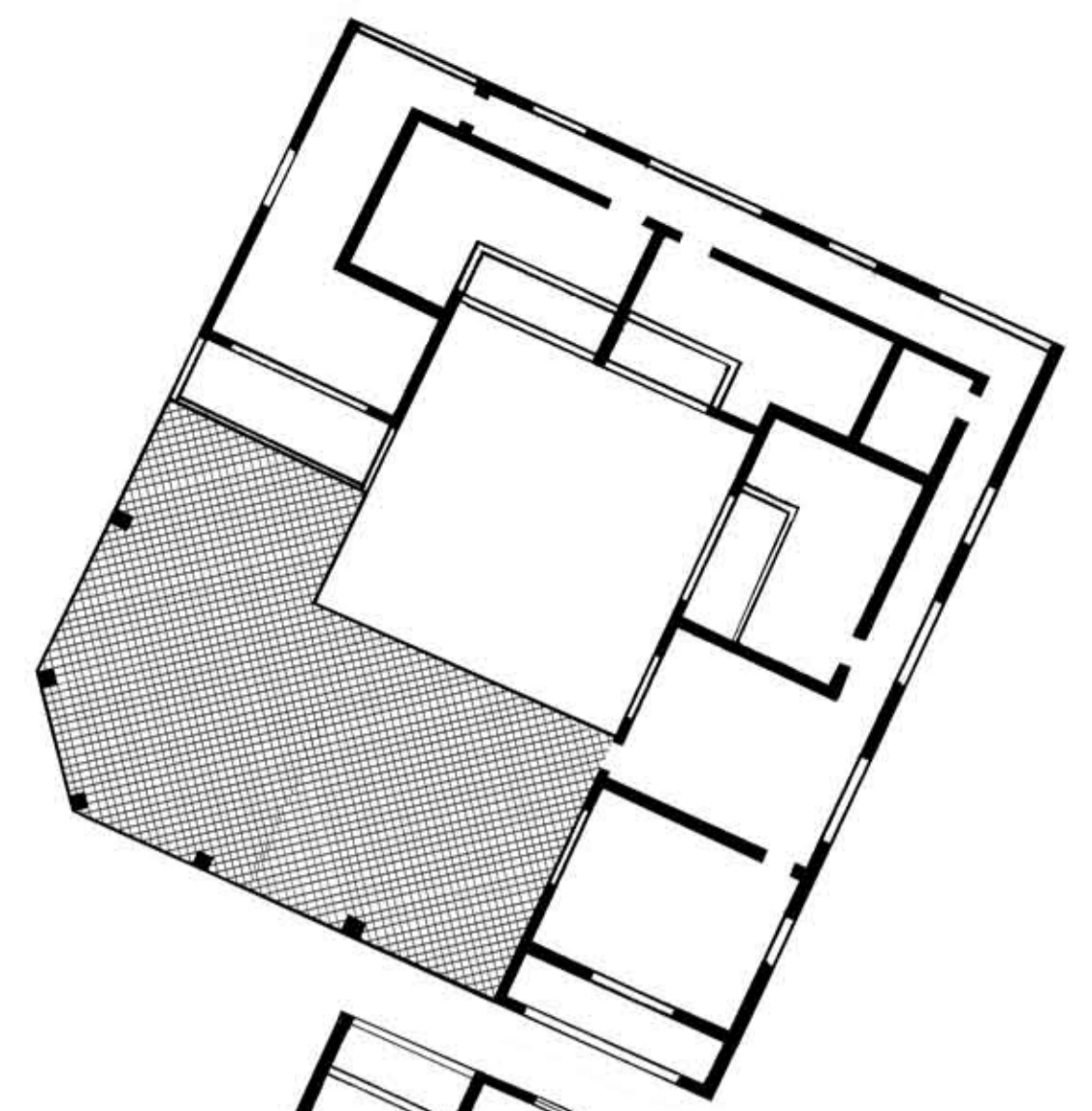
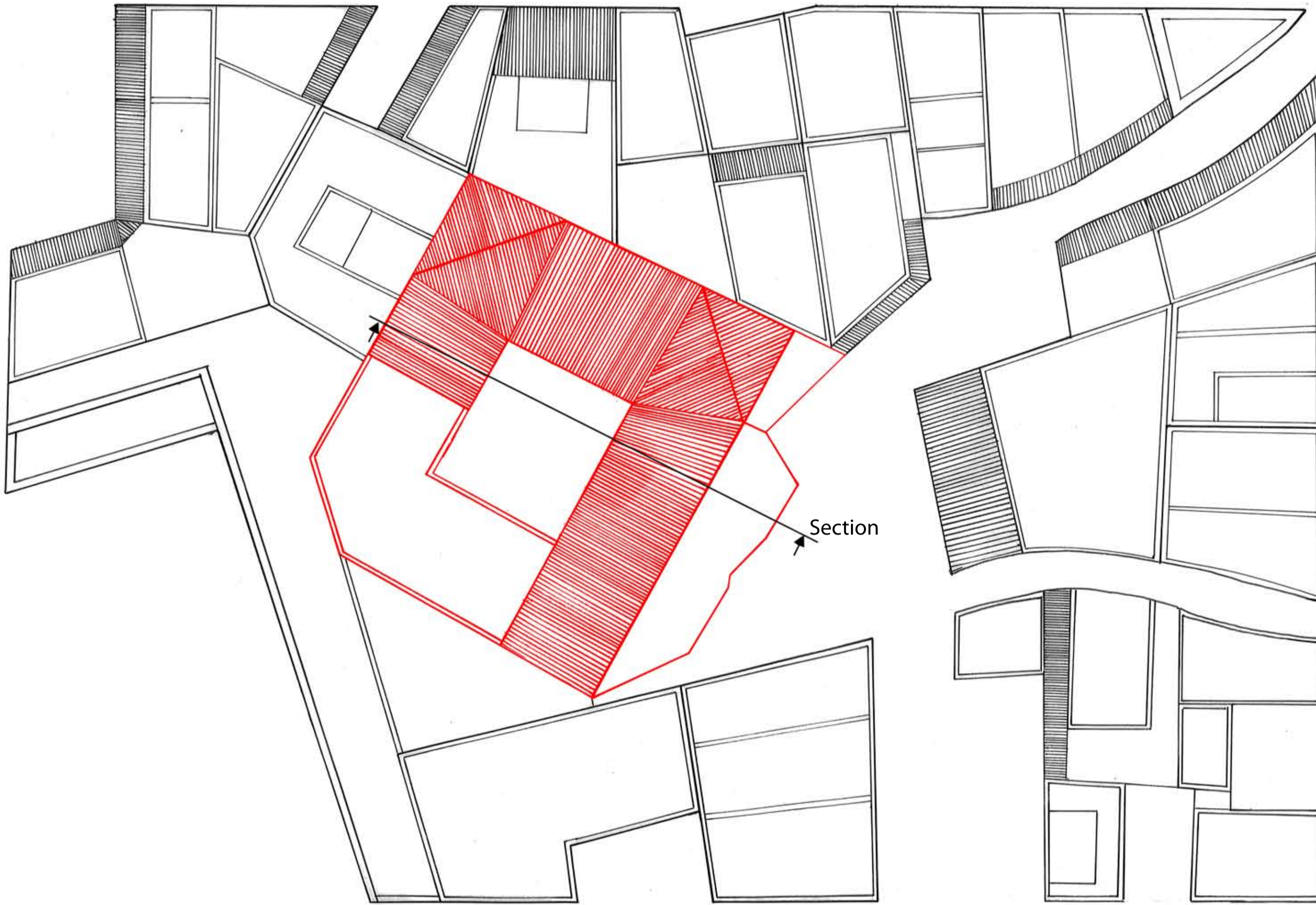


Isfahan is a Middle Eastern city rich in culture and tradition. Tourism and pilgrimage are key aspects of city life and thus accommodation is required. This hotel development is located in an ideal location between the central city square and bustling backstreets. As a result of this busy urban context, a main focus of the building is to allow light into the structure and courtyard to create an ideal environment for the lower levels. The form and cladding of the building respect the traditional architectural style at ground level while providing a more contemporary solution for the upper floors. A distinct separation between these two styles is created with a void, which has additional uses as a shaded open area in the summer months.

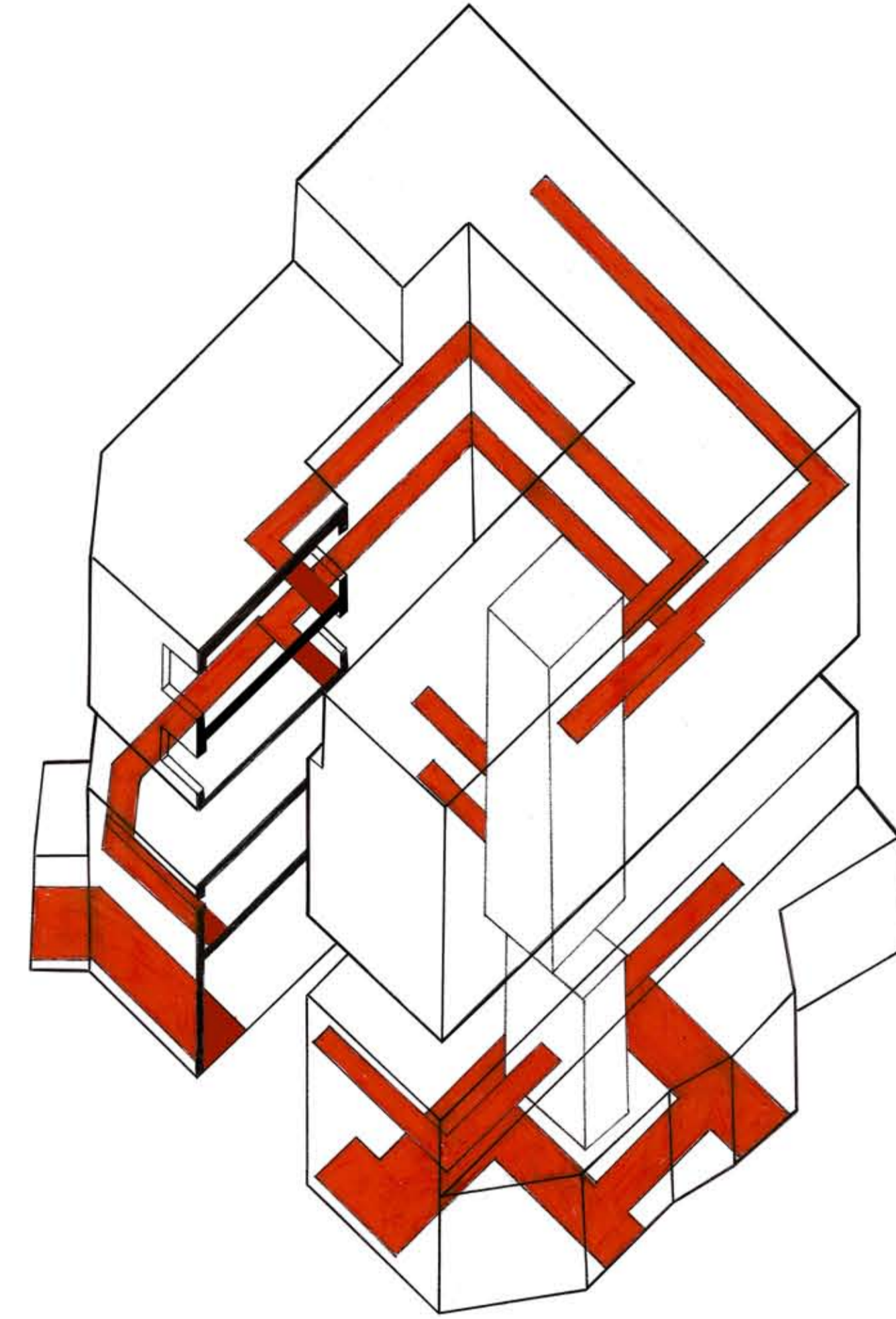
Location Plan 1:10 000



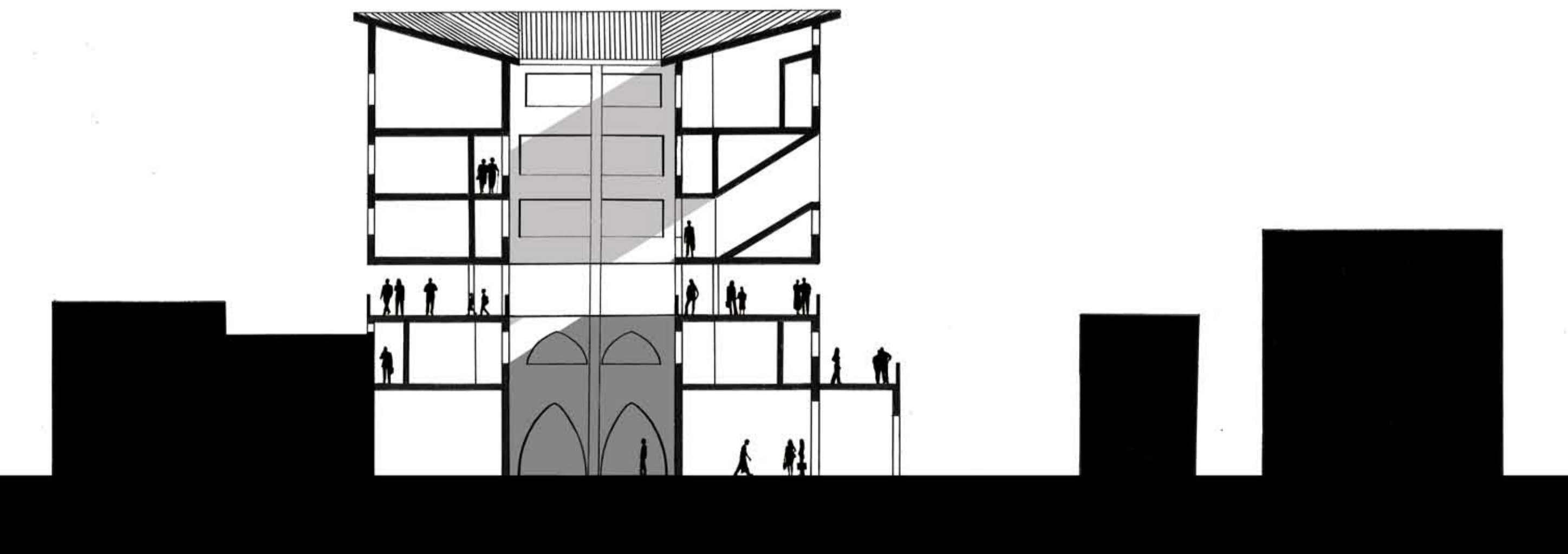
Floor Plans 1:200



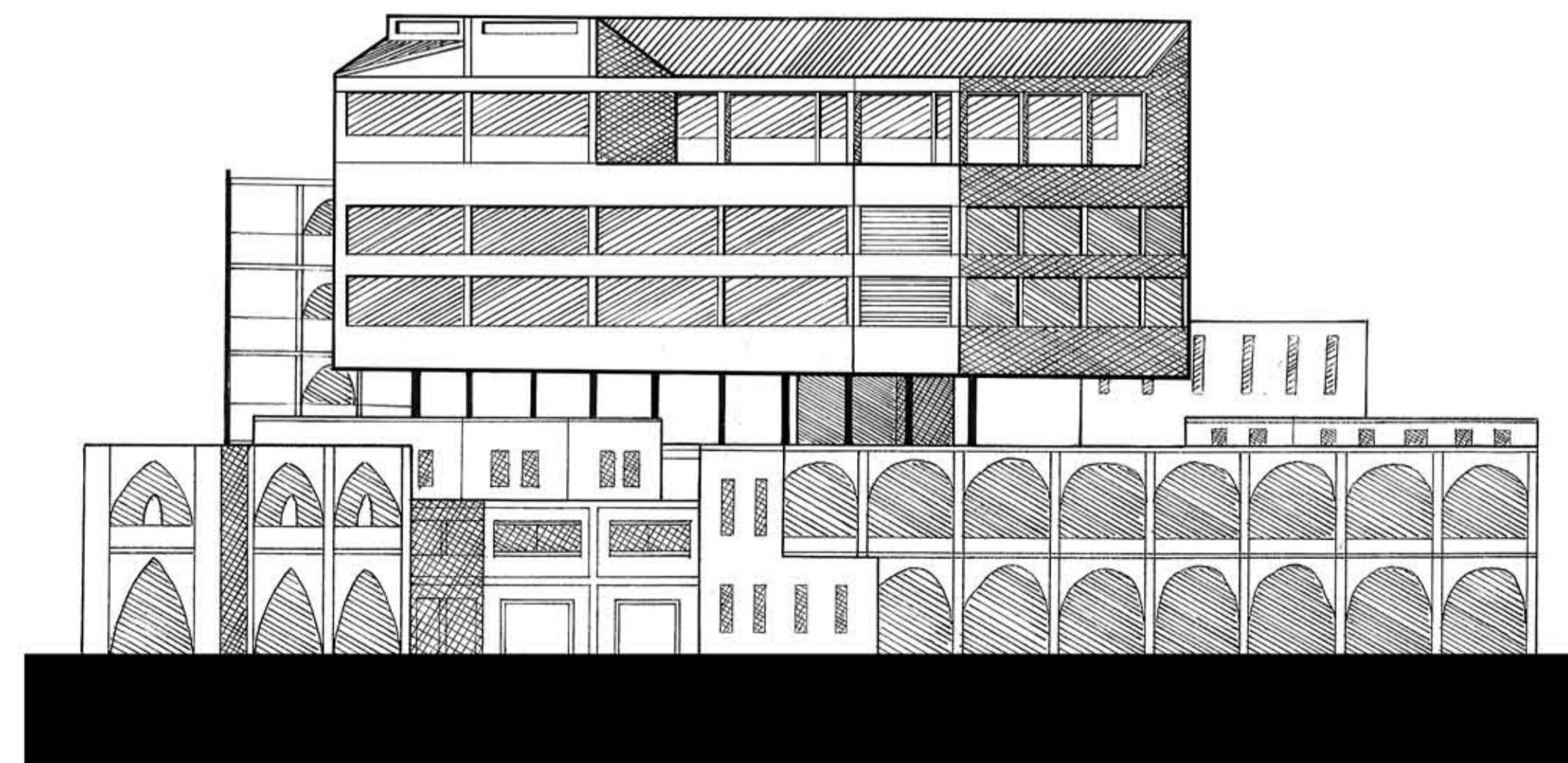
Site Plan 1:200



Sectioned Axonometric 1:200



East-West Section 1:200



Eastern Elevation 1:200