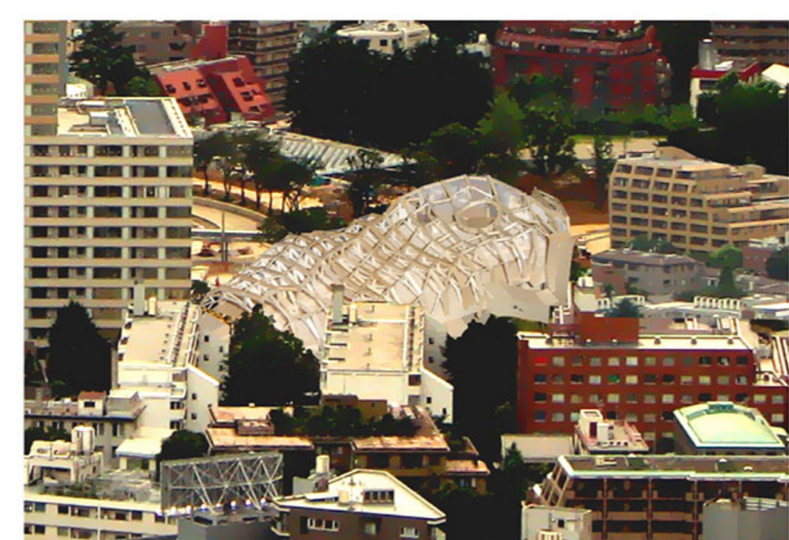
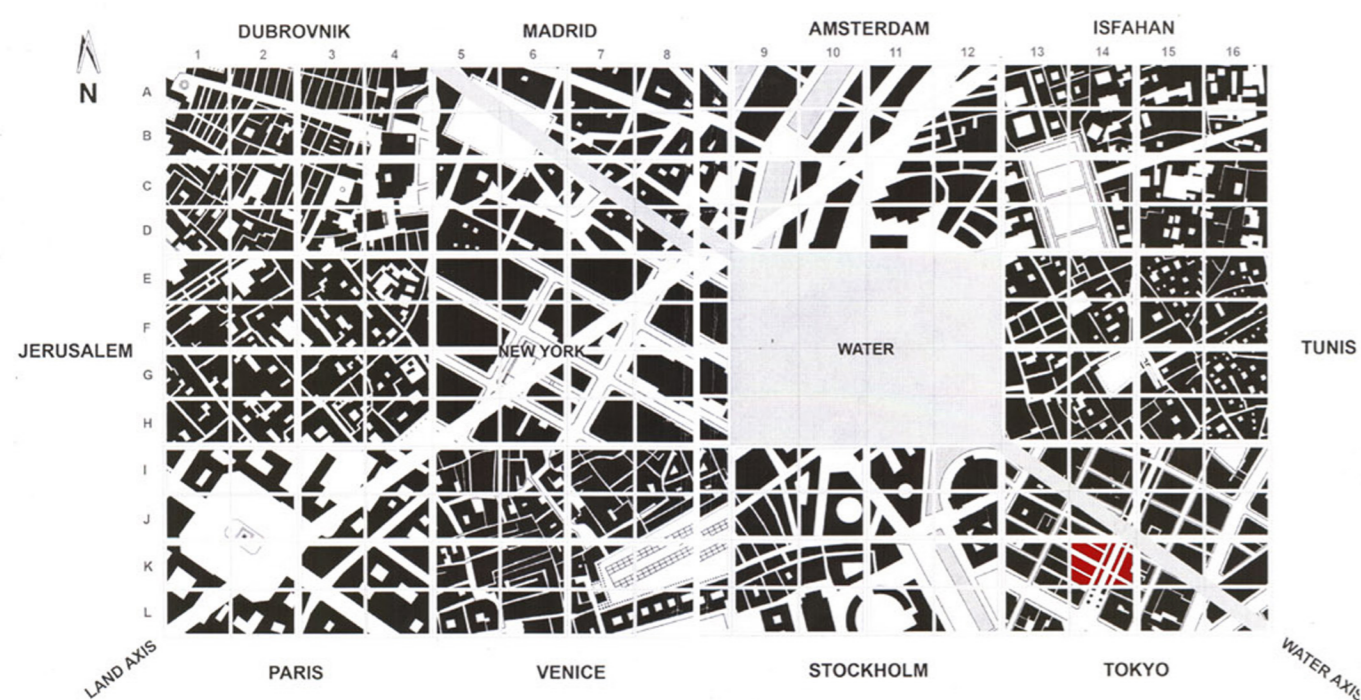
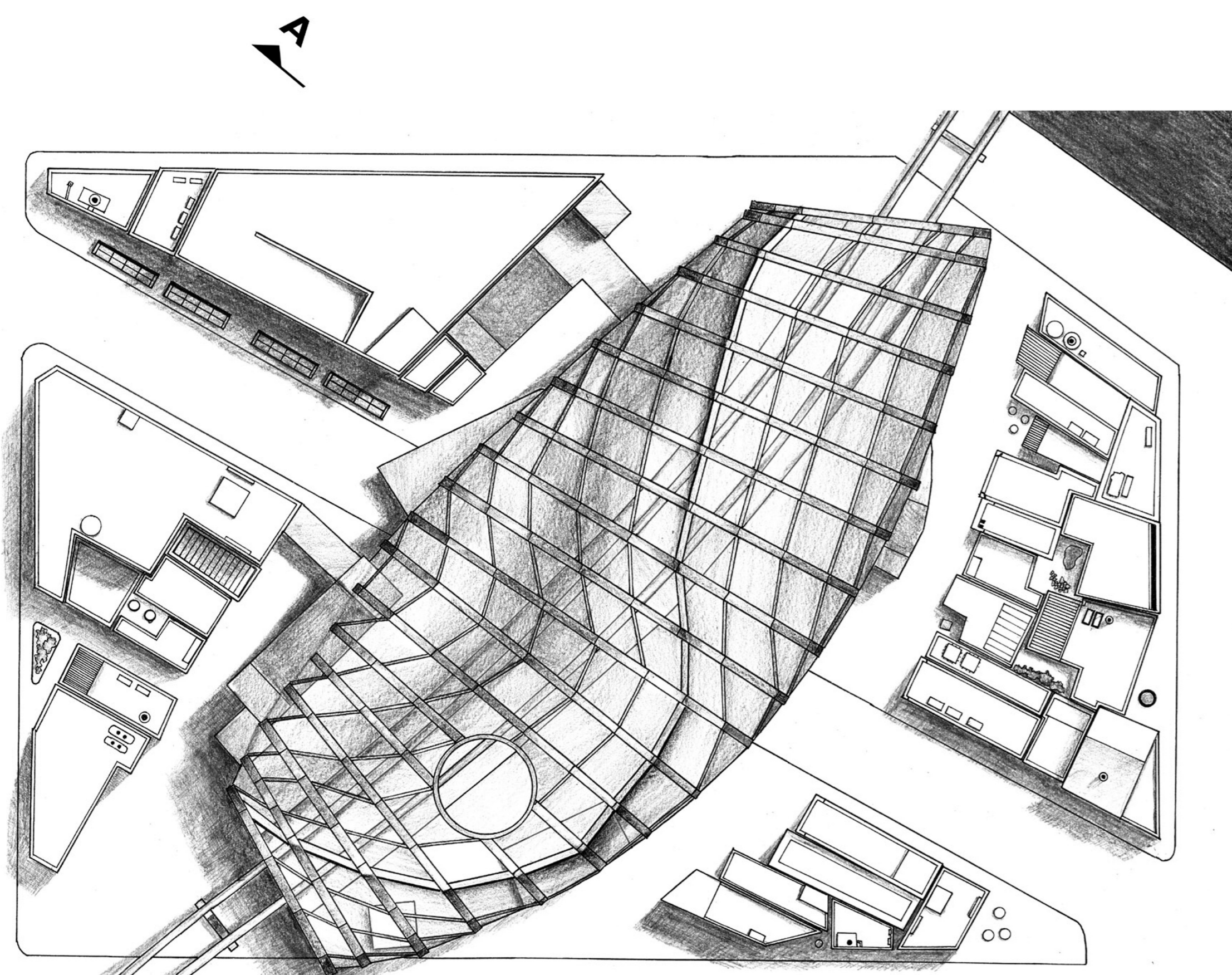


# TOKYO MONORAIL COMMUTER STATION

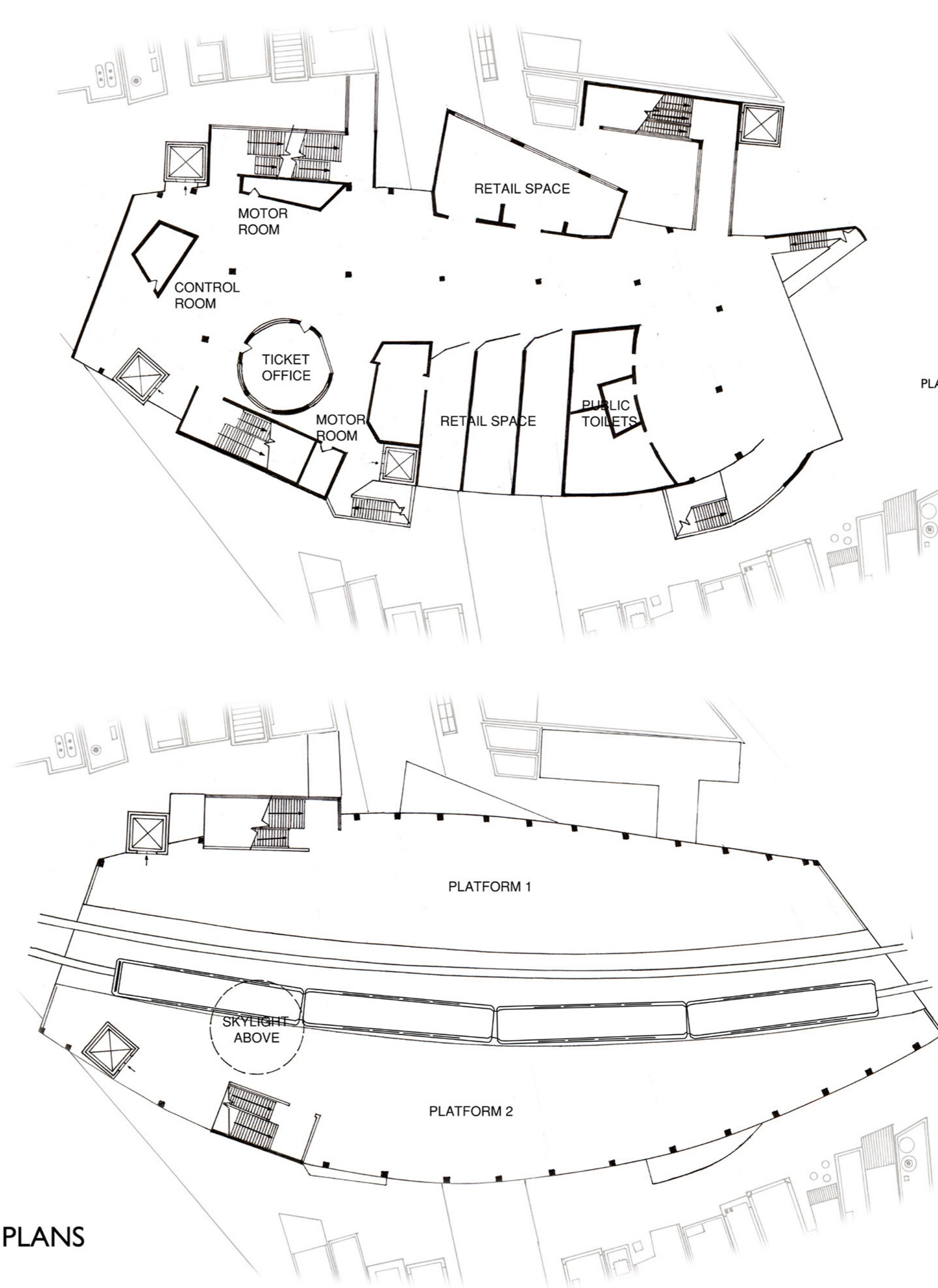
JIMMY HE SID: 309257050  
BLOCK REFERENCE: K14



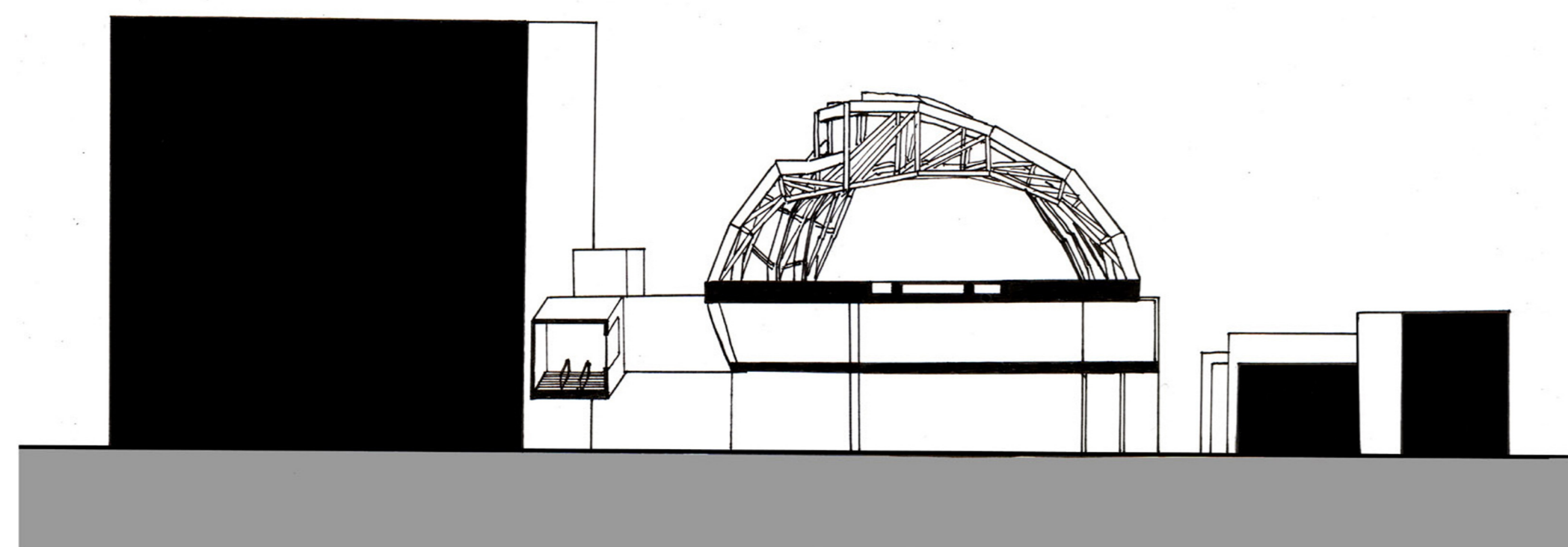
The monorail station lies at the heart of the block site, combining commuter, retail and recreational space harmoniously. The concourse level (first floor) houses the retail and station facilities as well as the circulation systems used move up to the platform level and down to the ground level. The visually dominant truss roofing creates a sense of energy and dynamism. The light, translucent cladding underscores the architectural form.



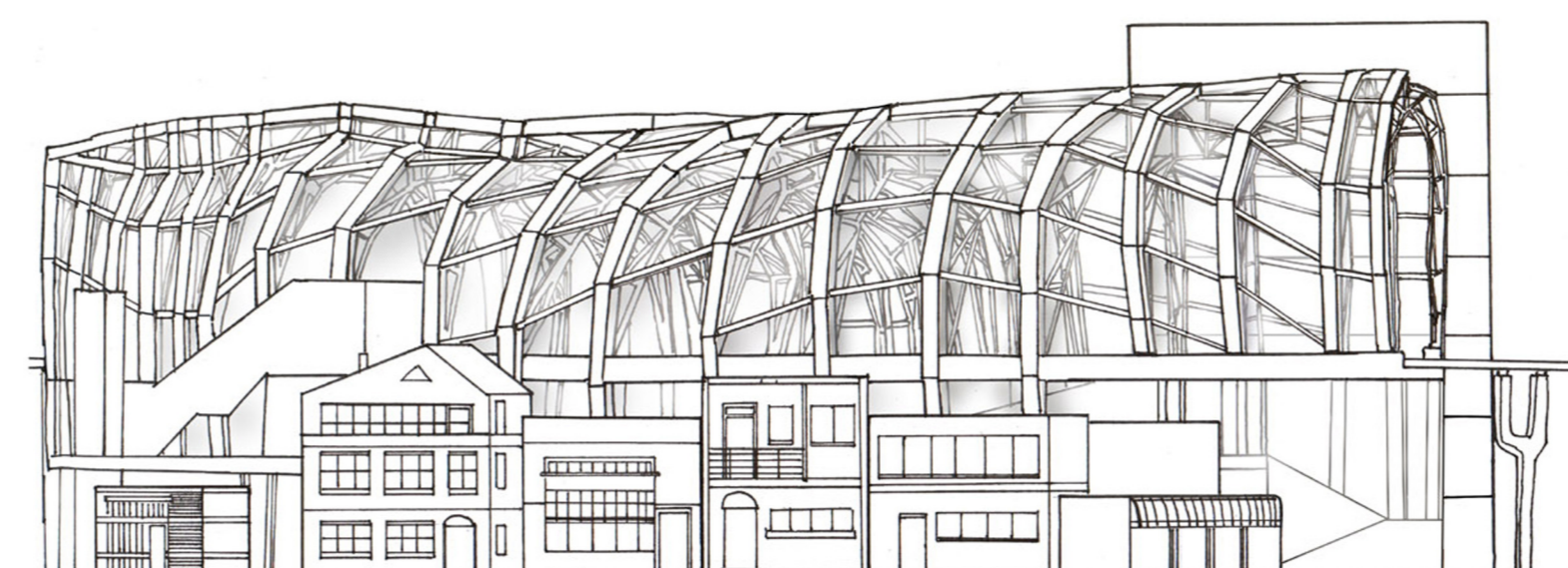
AERIAL SITE PLAN



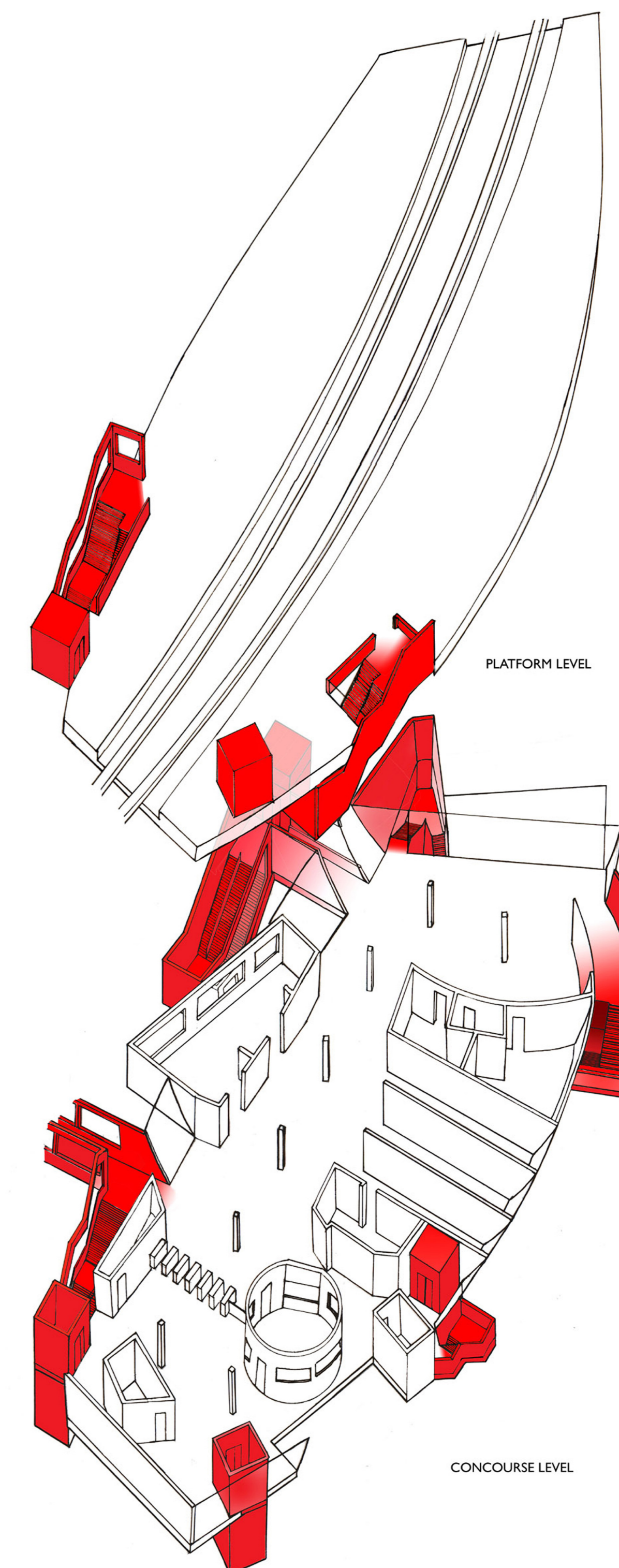
BUILDING PLANS



SECTION A-A



EAST ELEVATION



AXONOMETRIC