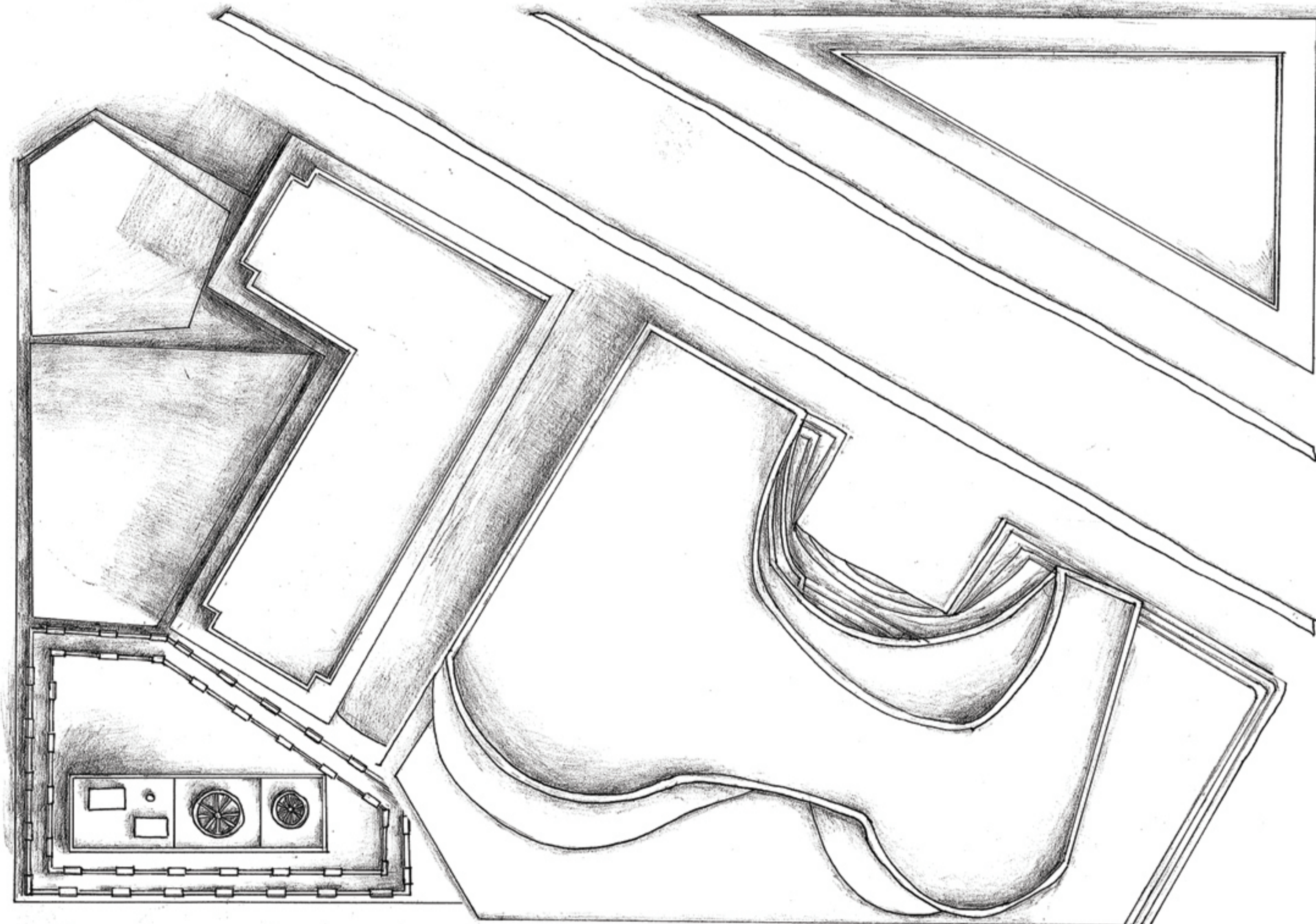
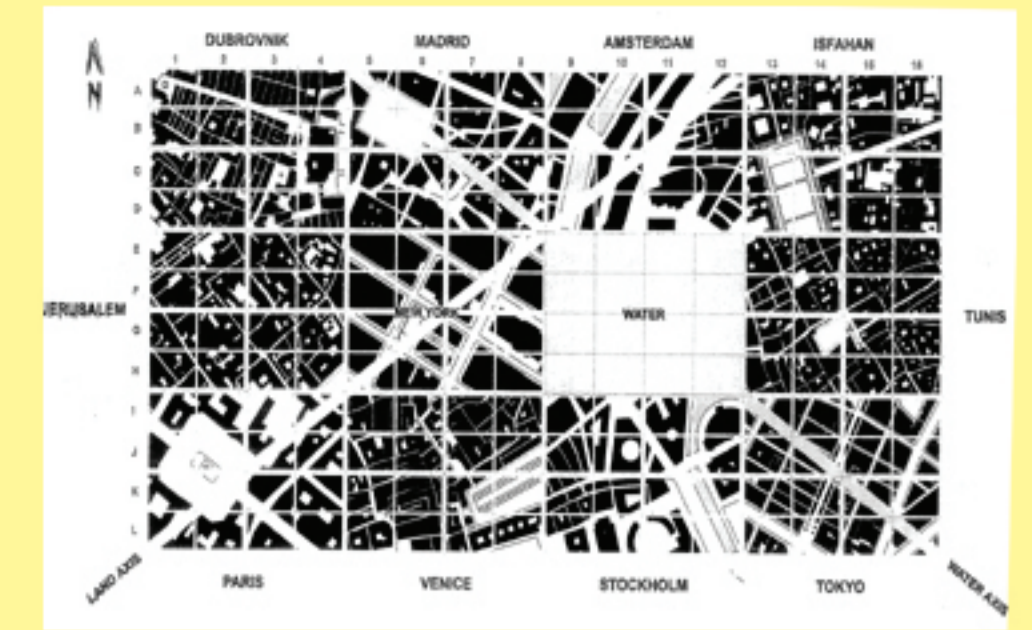


Design College - New York City

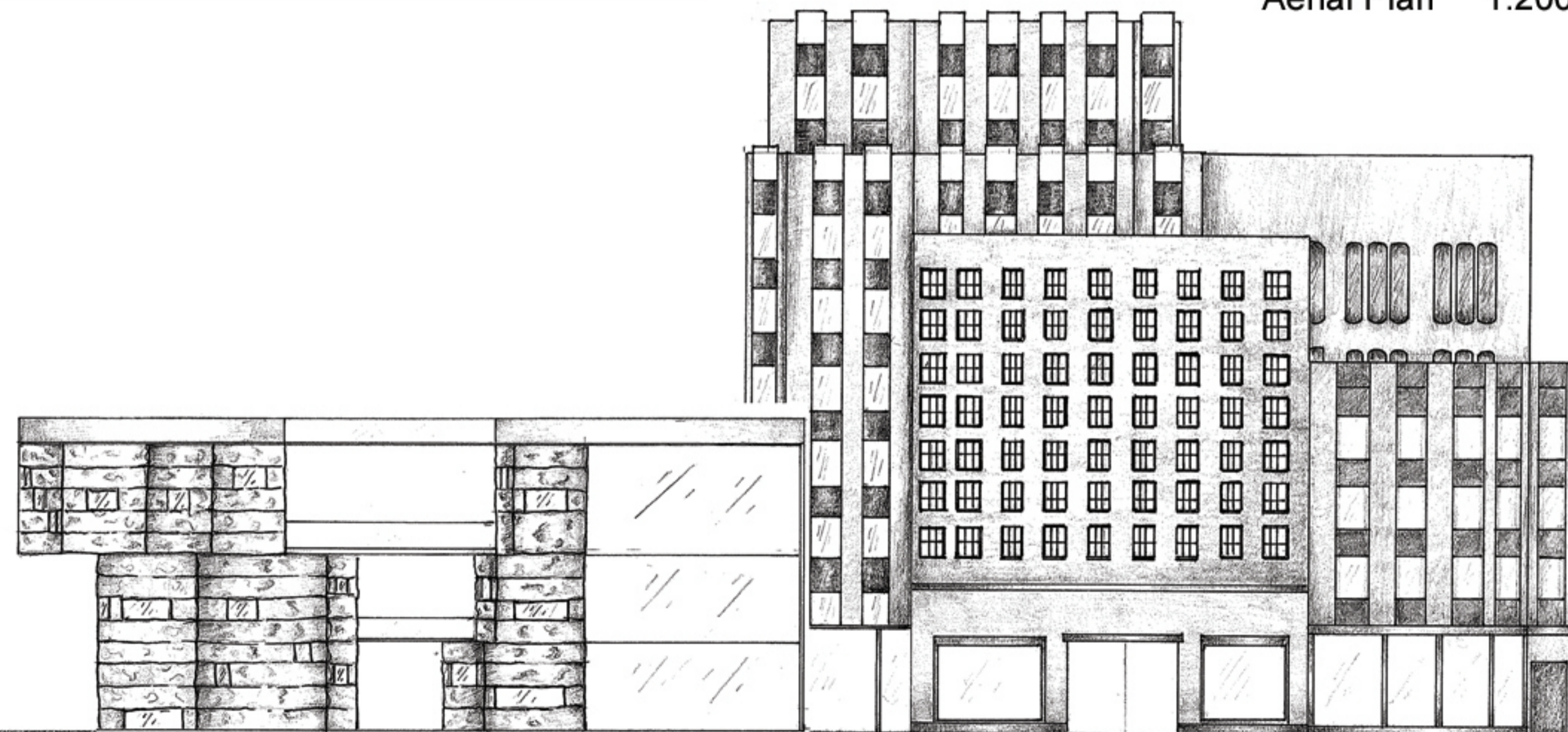
Karen Ho 309260825

H6

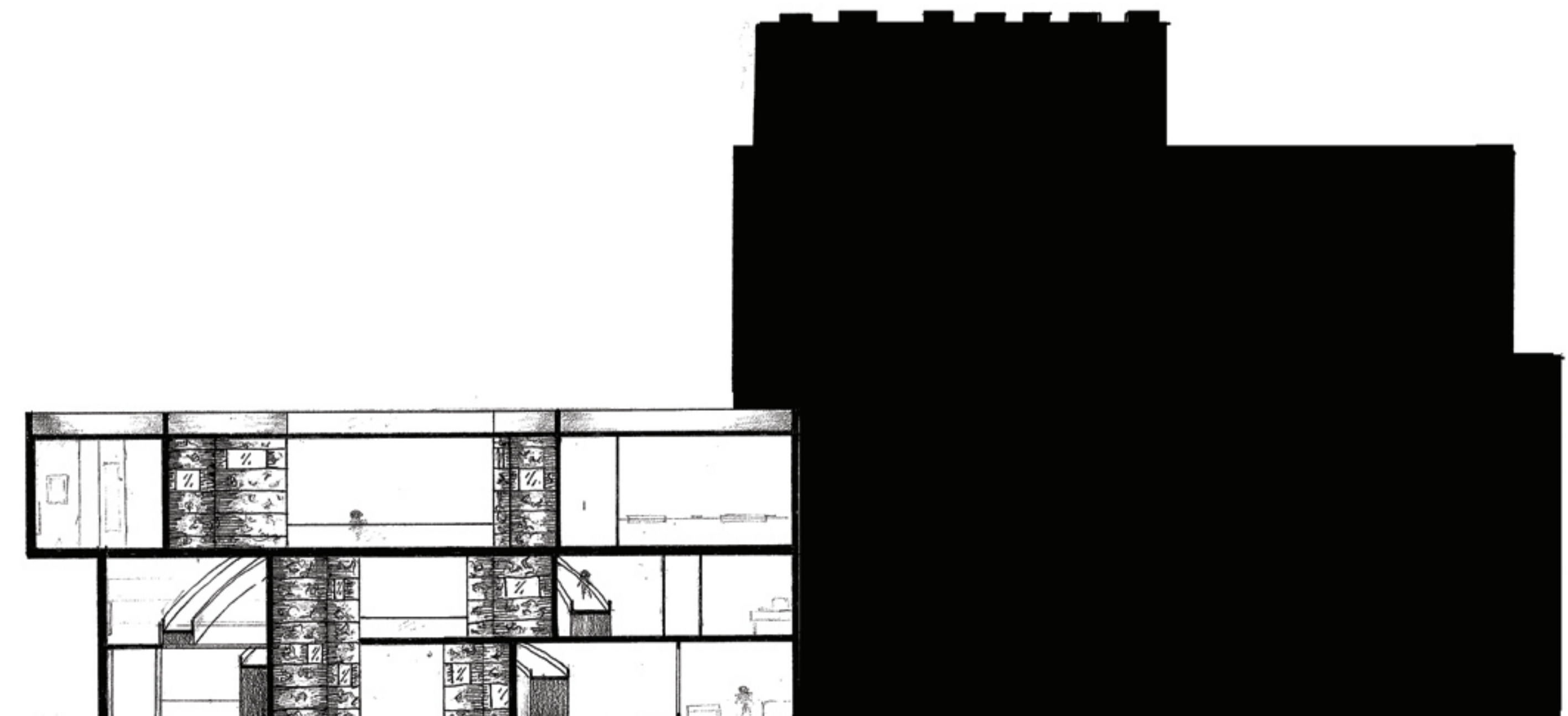


Aerial Plan 1:200

Like the city of New York, the design college embraces diversity and encourages integration. The curved form contrasts the typical box-like structure of New York buildings as a representation of innovation. The entryway is designed to resemble cave walls with the horizontal layering and texture. As the students and public approach, the space becomes narrower until they find themselves inside the central space where each level above them steps back - allowing for sunlight to enter. An integral part of the college is the circulation situated in the centre where students can interact with students of other disciplines and the public. As it is an educational institute, the public space has been separated for privacy and safety reasons. The bridges connecting the two buildings help to control when there is access to the other side. Situated near the public square and fashion centre of New York City, the location is ideal for students to become immersed and inspired by their vibrant surroundings.



Elevation 1:200



Section 1:200