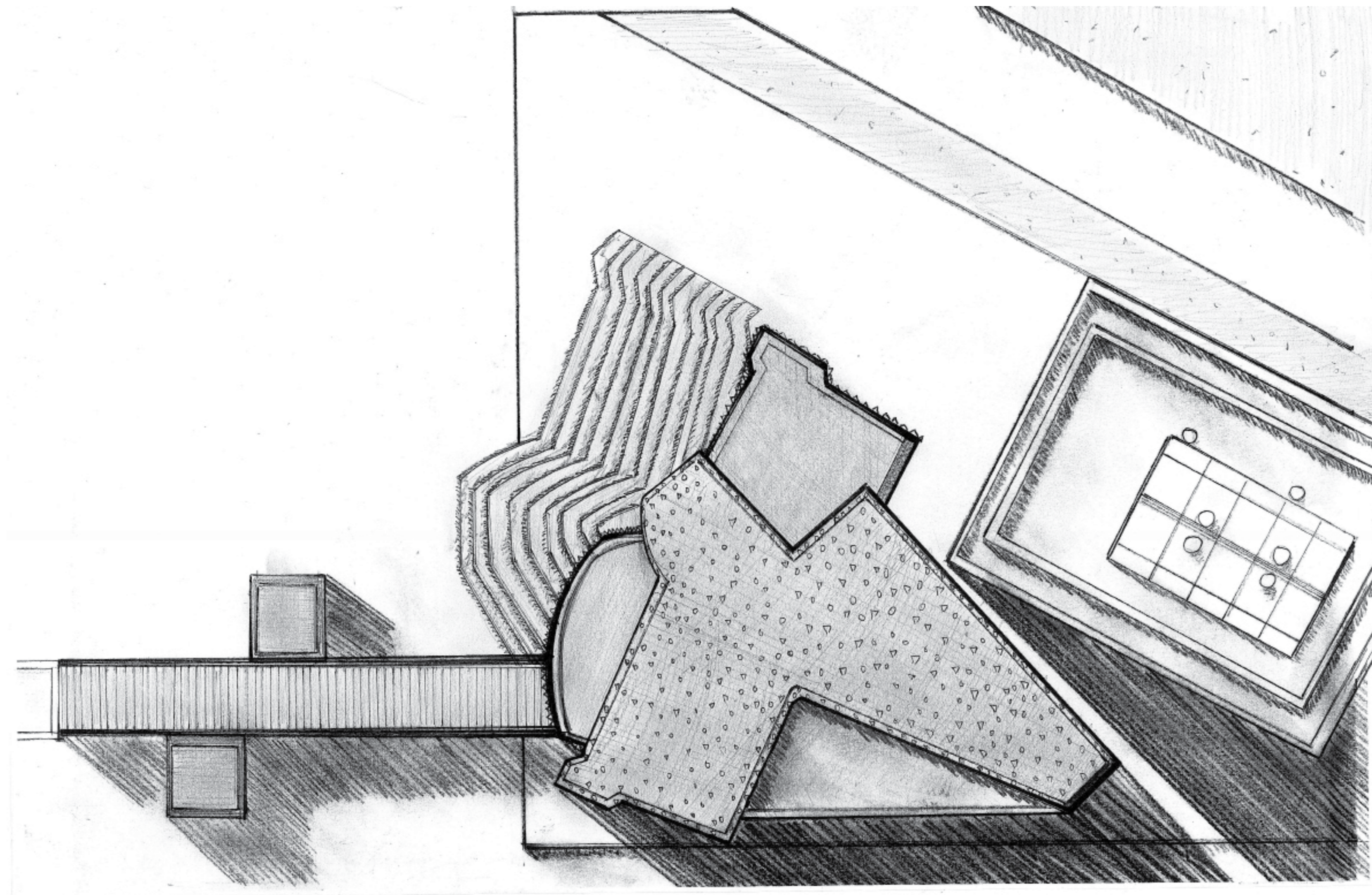
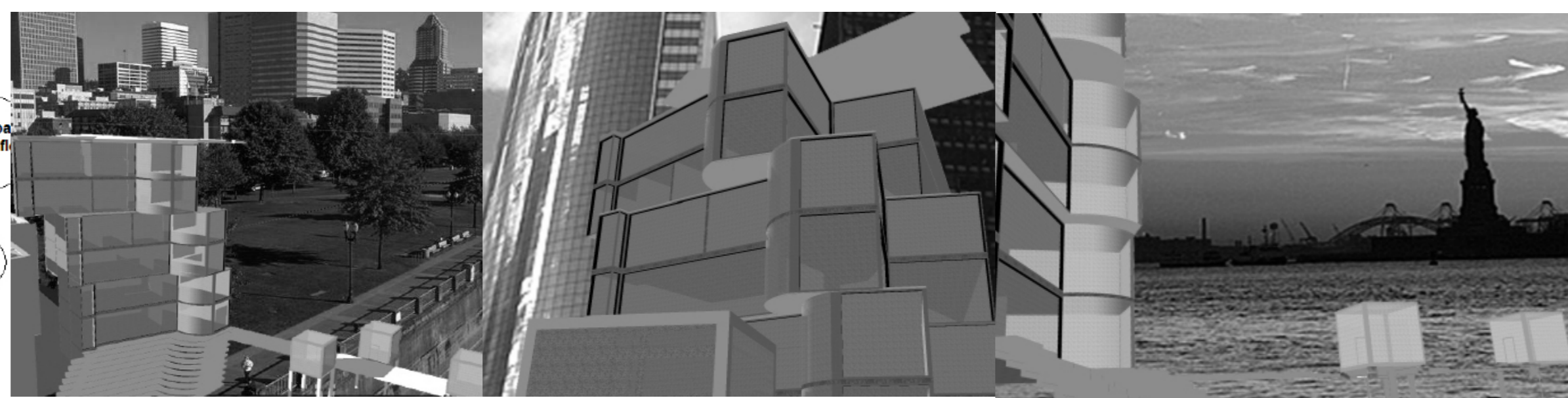
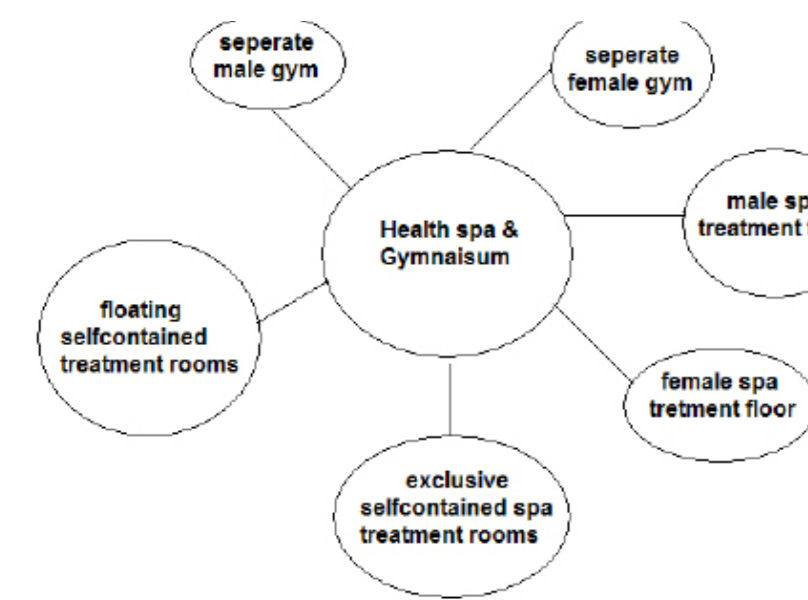


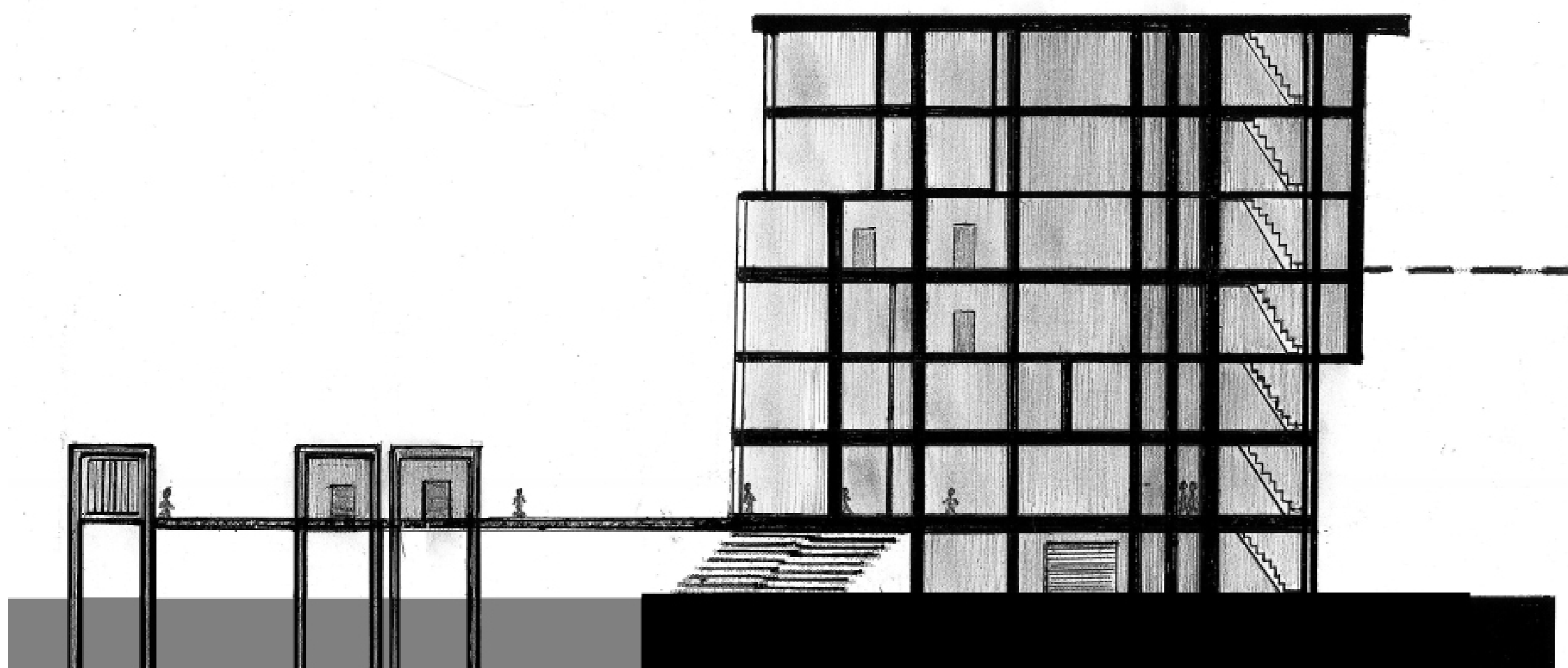
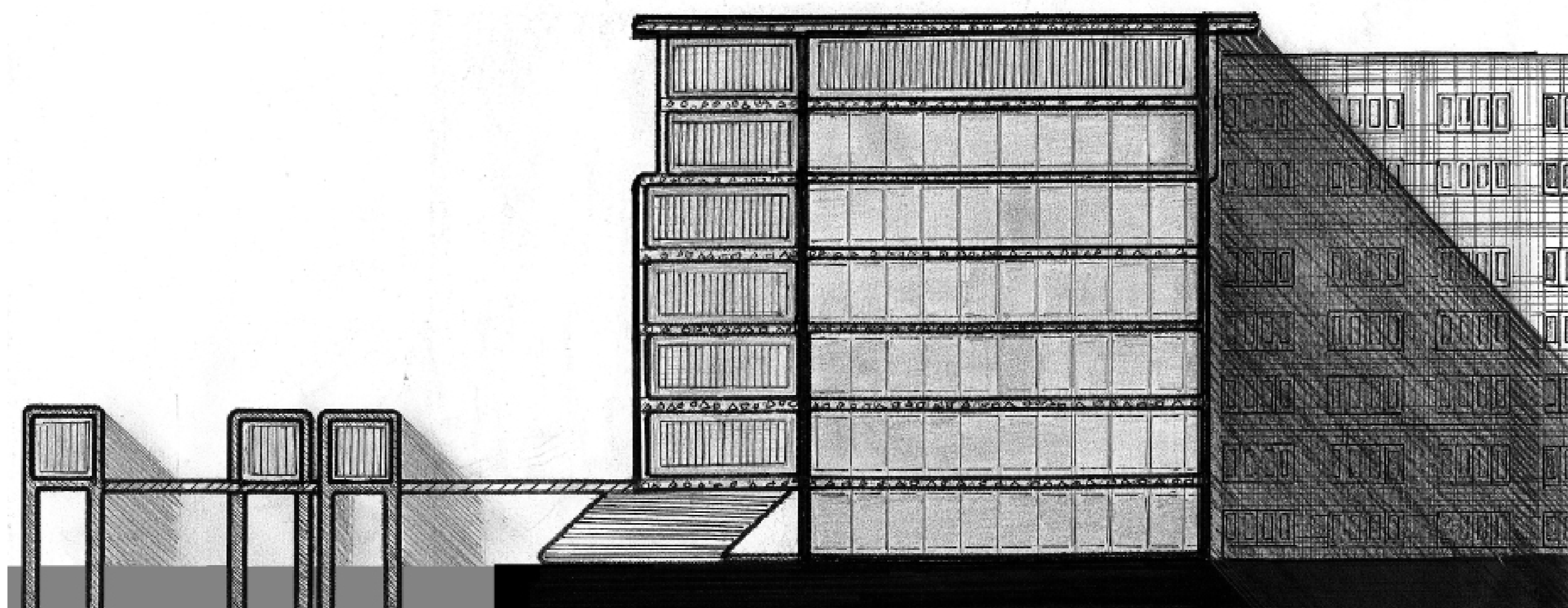


New York Health Spa & Gymnasium

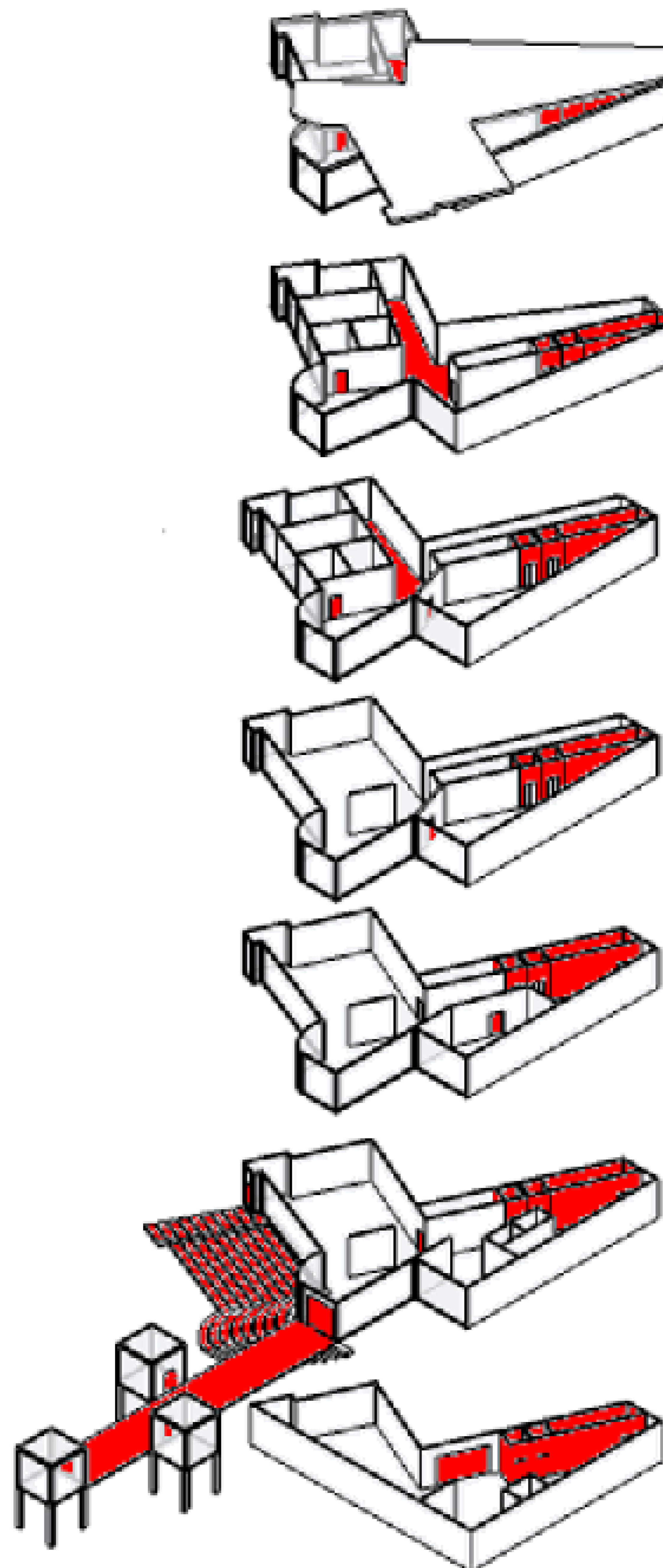
The intention of this project is to create an intimate Health Spa in the Centre of New York City. The building has been designed to gracefully come over the edge of the site and onto the water with a floating walkway and self contained treatment pods. This connection with the water and the eastern sun provides the city with a relaxing getaway which blocks out all the noise and city chaos. The water views are maximized with large reflective glass panels which have beautiful sheer curtain walls. This cladding system links the building with its surroundings while also maintaining a sense of privacy. The building has the same floor plan on each level which fans out off the elevator core. This gives the building an interesting aesthetic quality while also maximizing sun exposure and views. The horizontality of the building has also been expressed to reveal the exclusivity of the Health Spa.



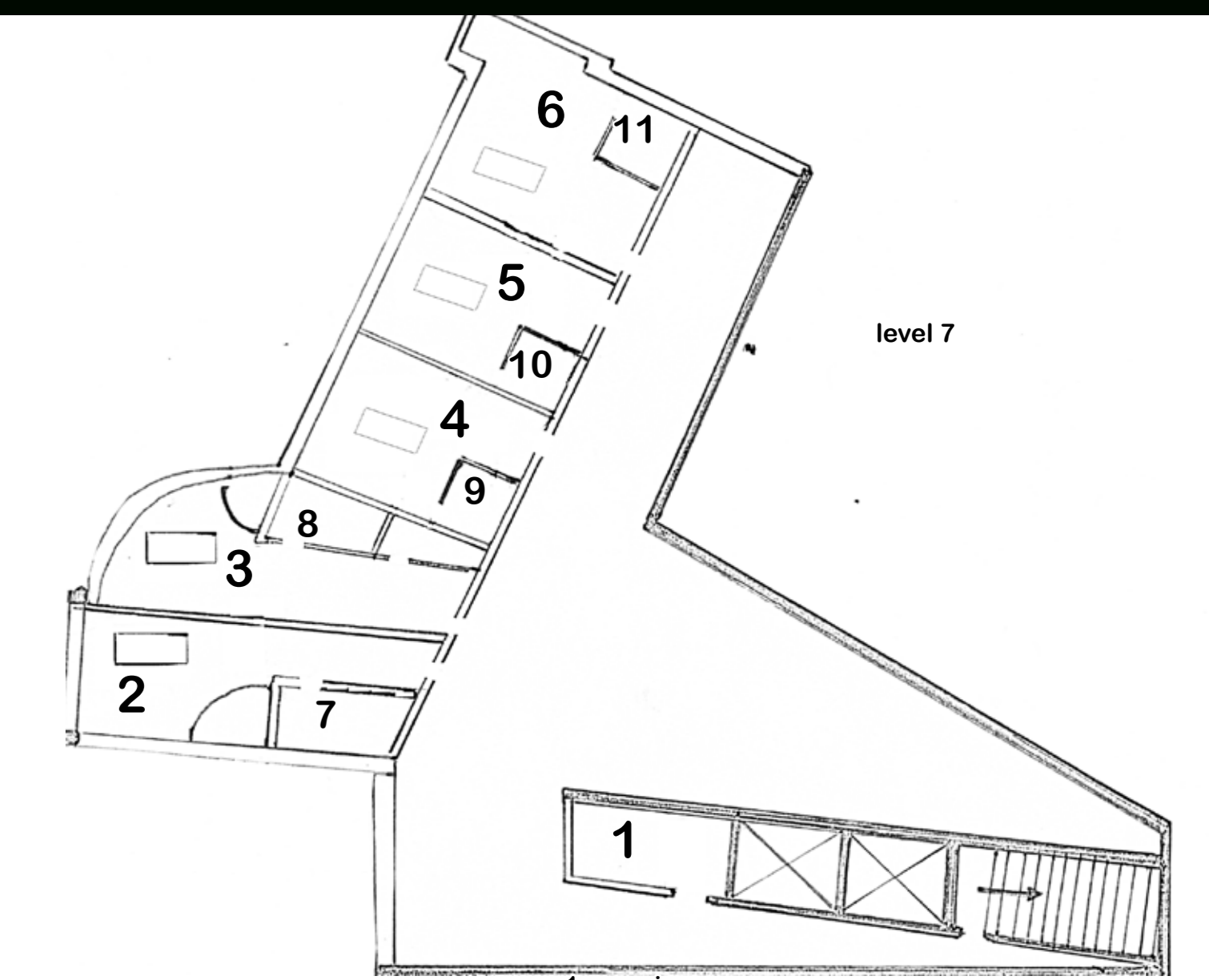
Aerial Plan



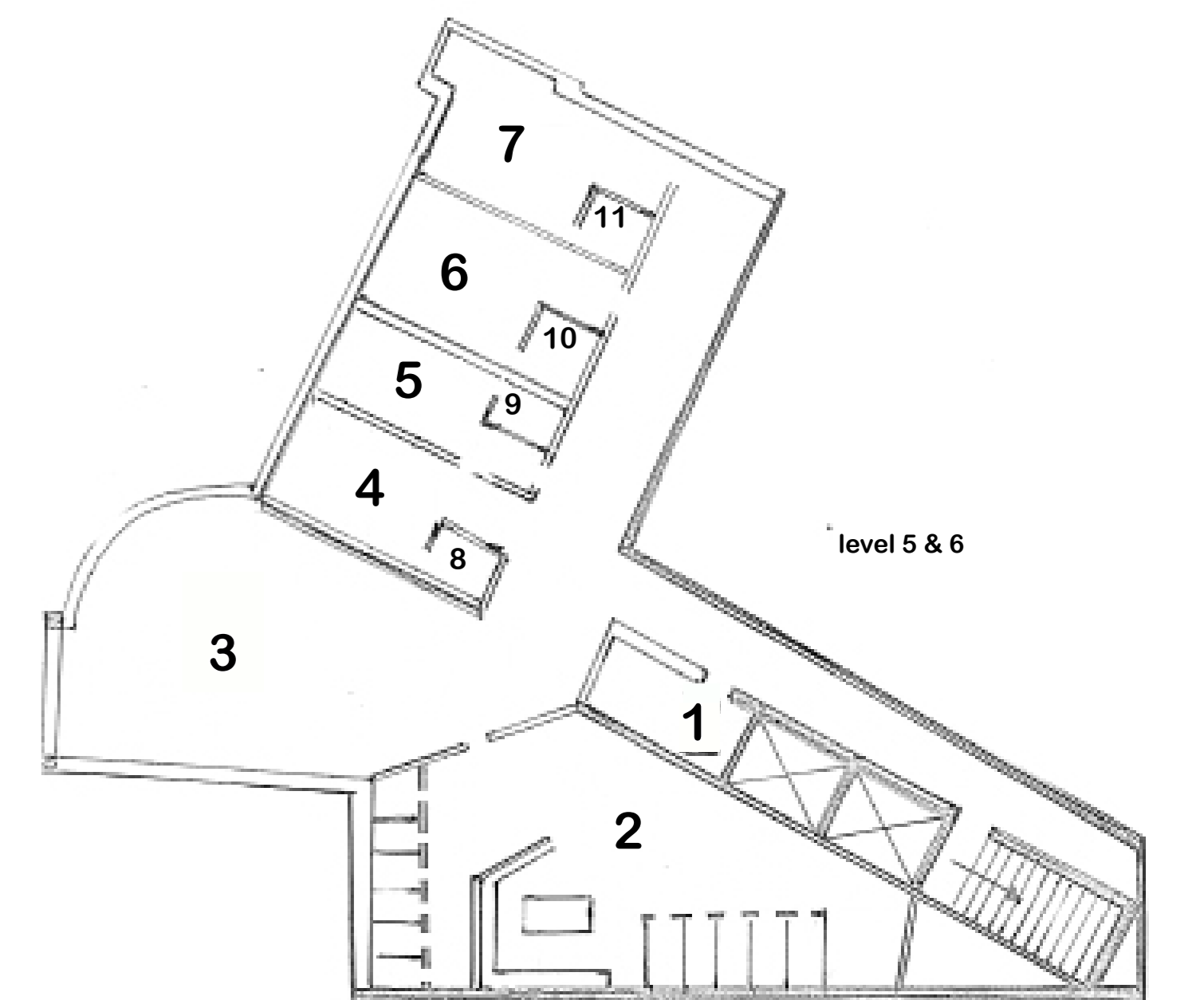
Section



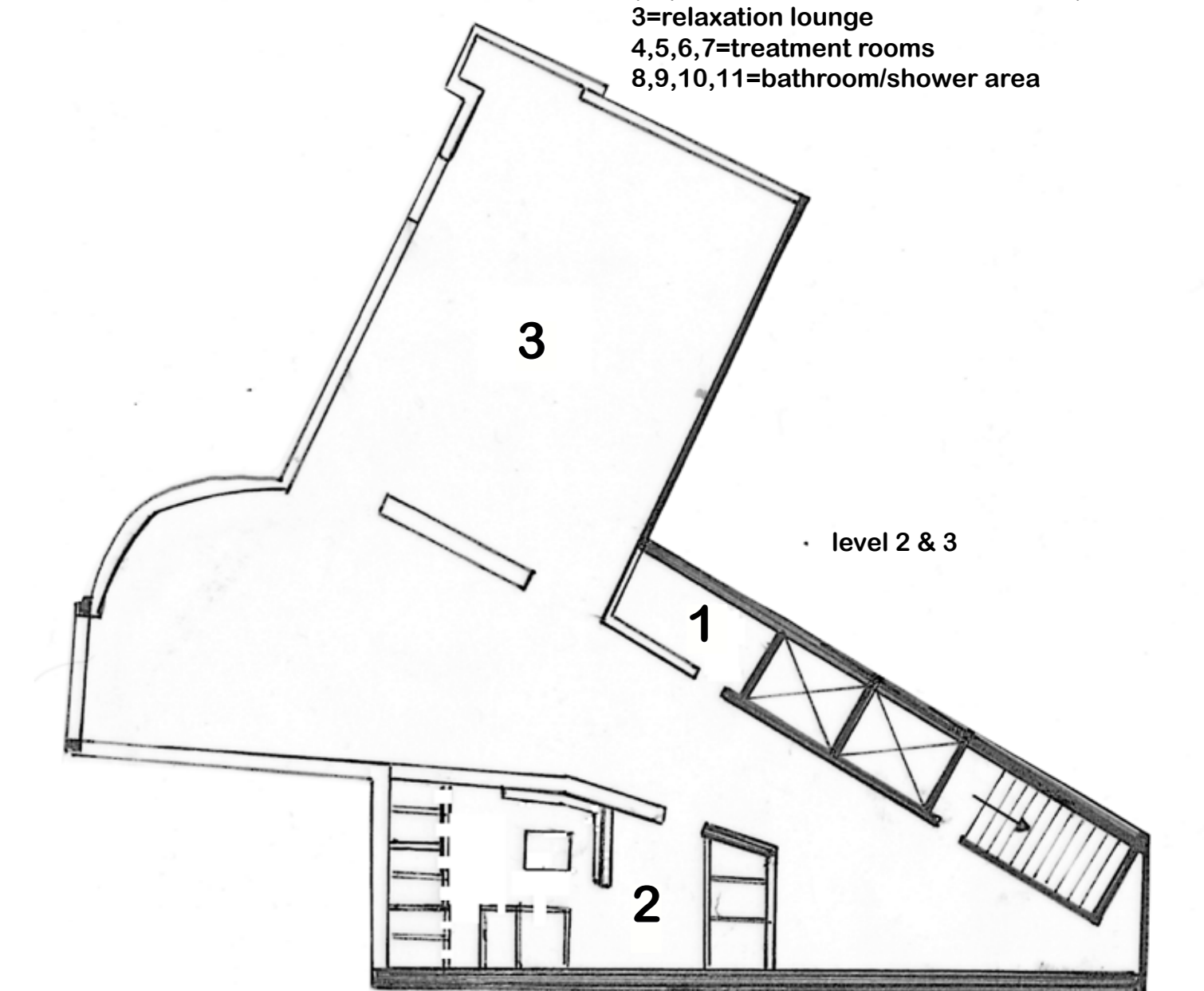
Axonometric



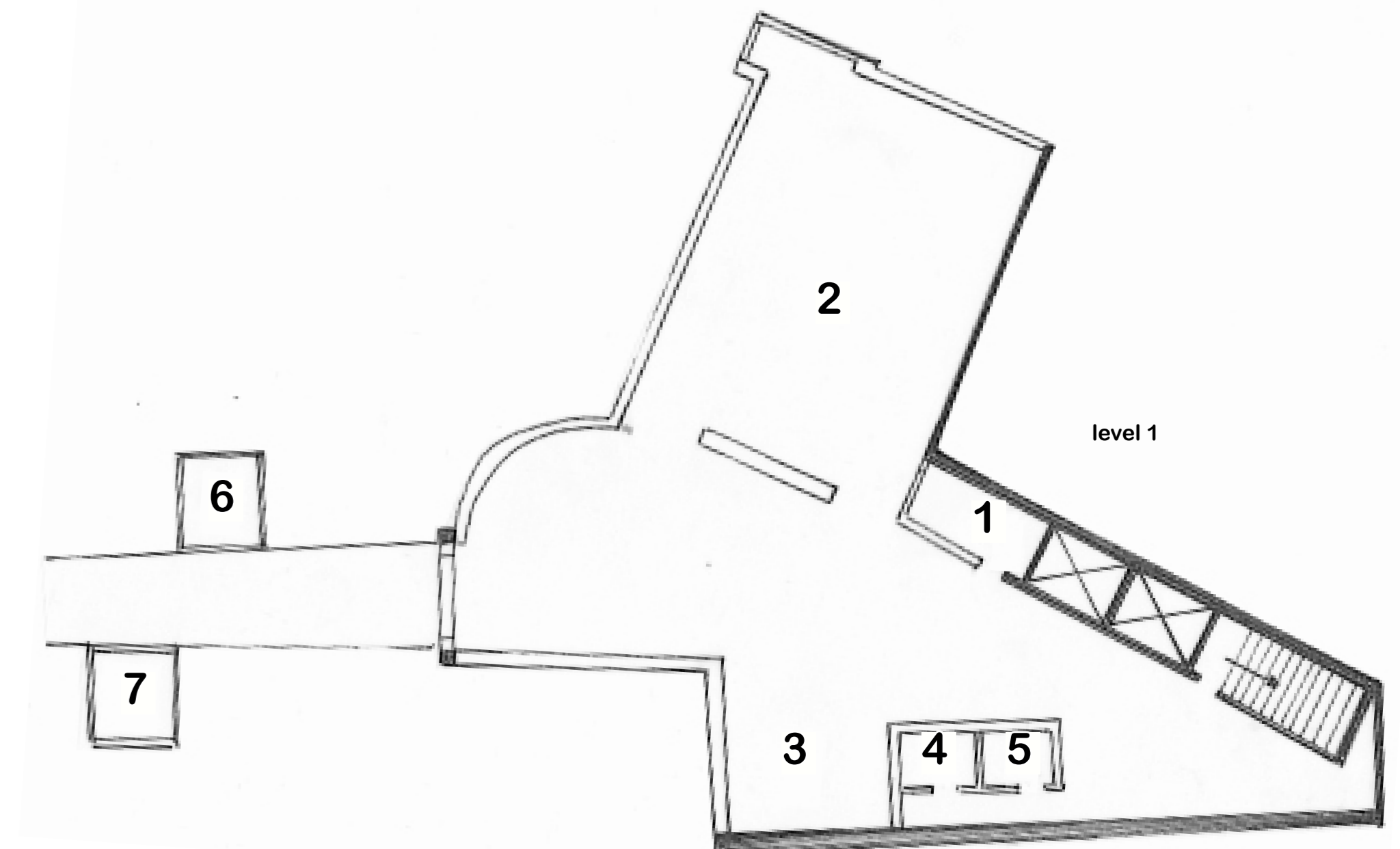
1= service area
2,3,4,5,6= self contained treatment room
7,8,9,10,11=bathroom/shower area for spa



1= service area
2= female/male change room & spa area (separate floors for men and women)
3=relaxation lounge
4,5,6,7=treatment rooms
8,9,10,11=bathroom/shower area



1= change room
2= service area
3= gymnasium



1= service area
2= foyer area
3= cosmetics shop
4= female bathroom
5= male bathroom
6,7= self contained treatment pods