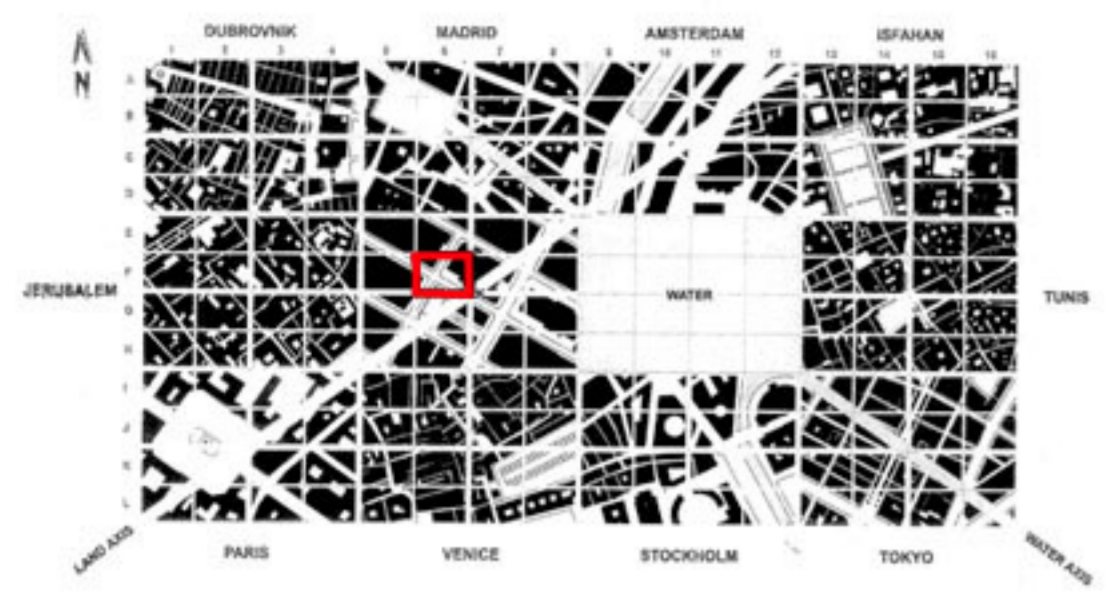
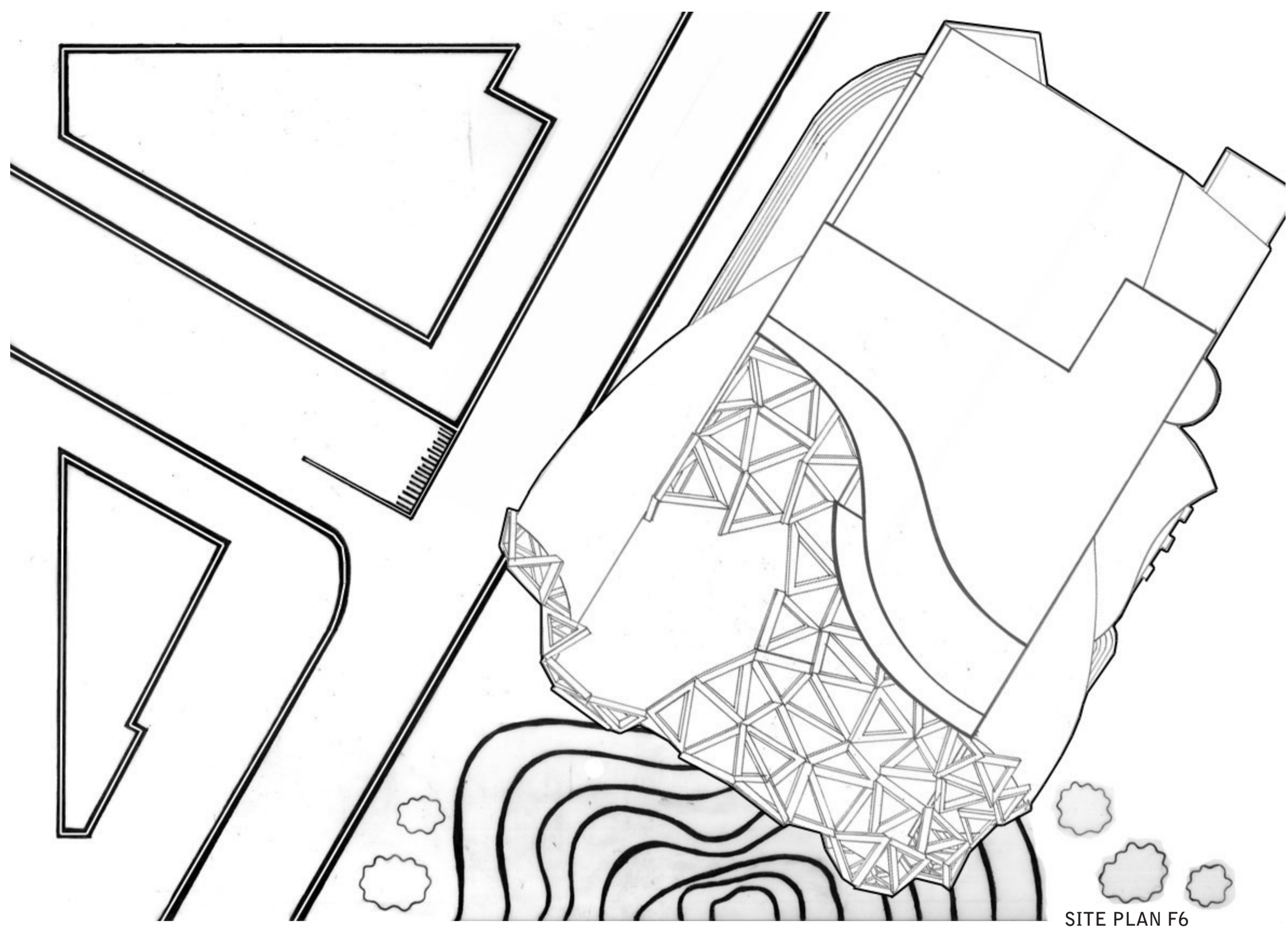
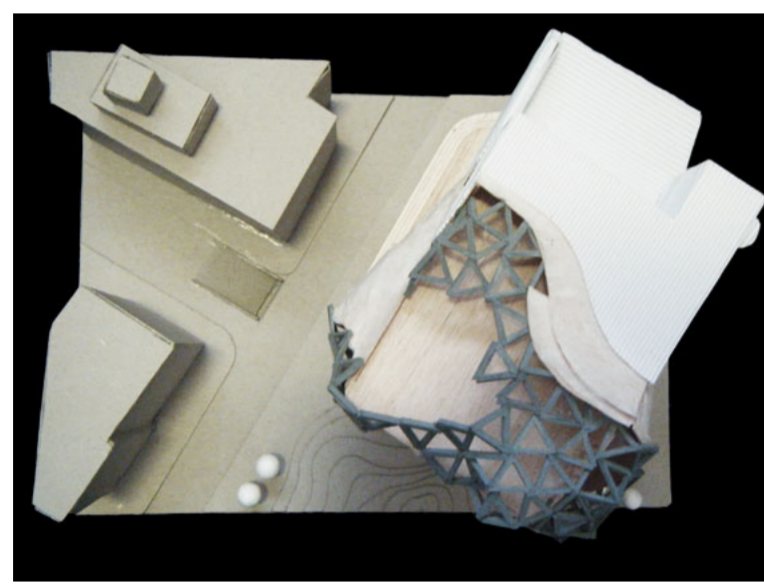


# New York City Theatre F6

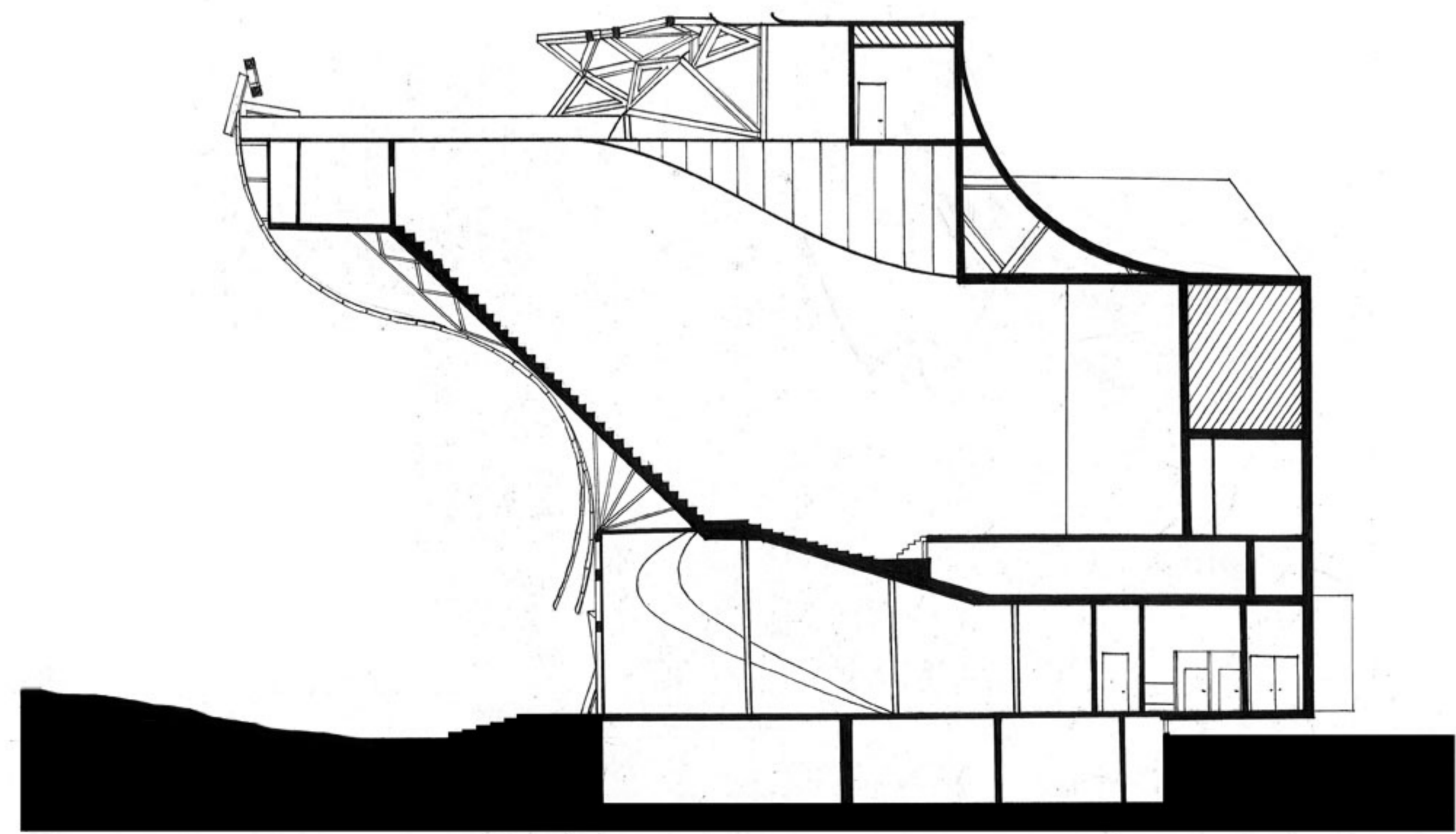
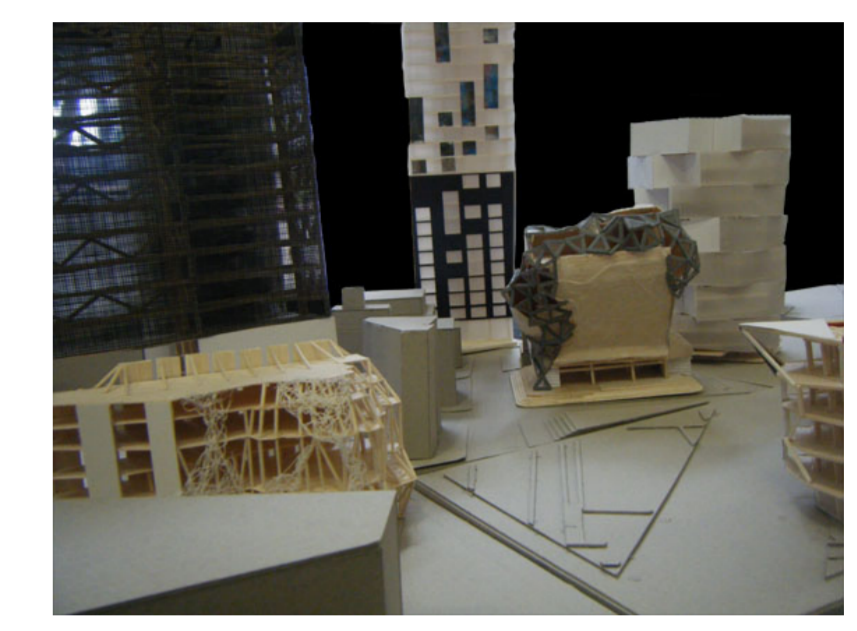
Veronica Dowling  
309202744  
New York F6



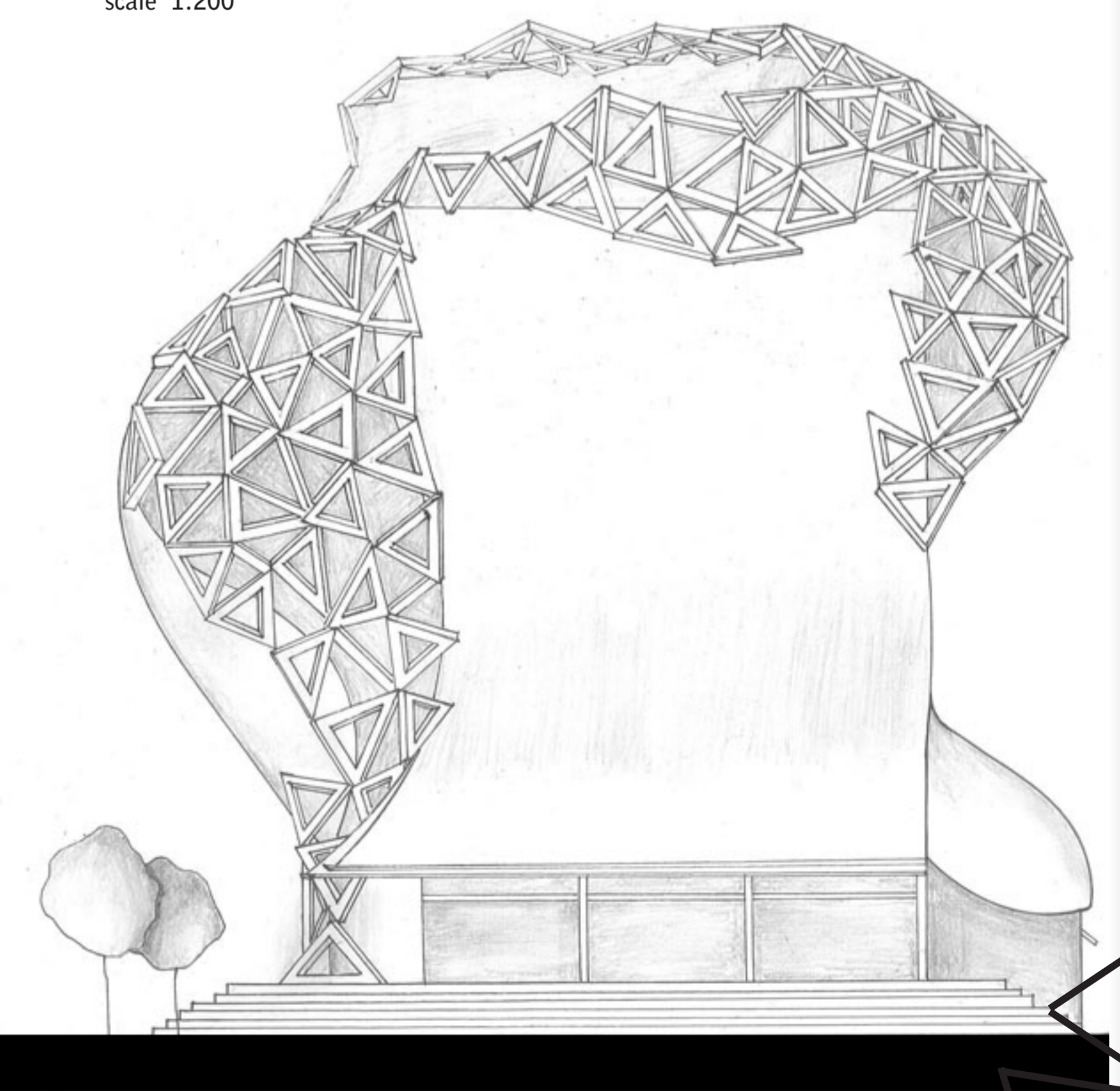
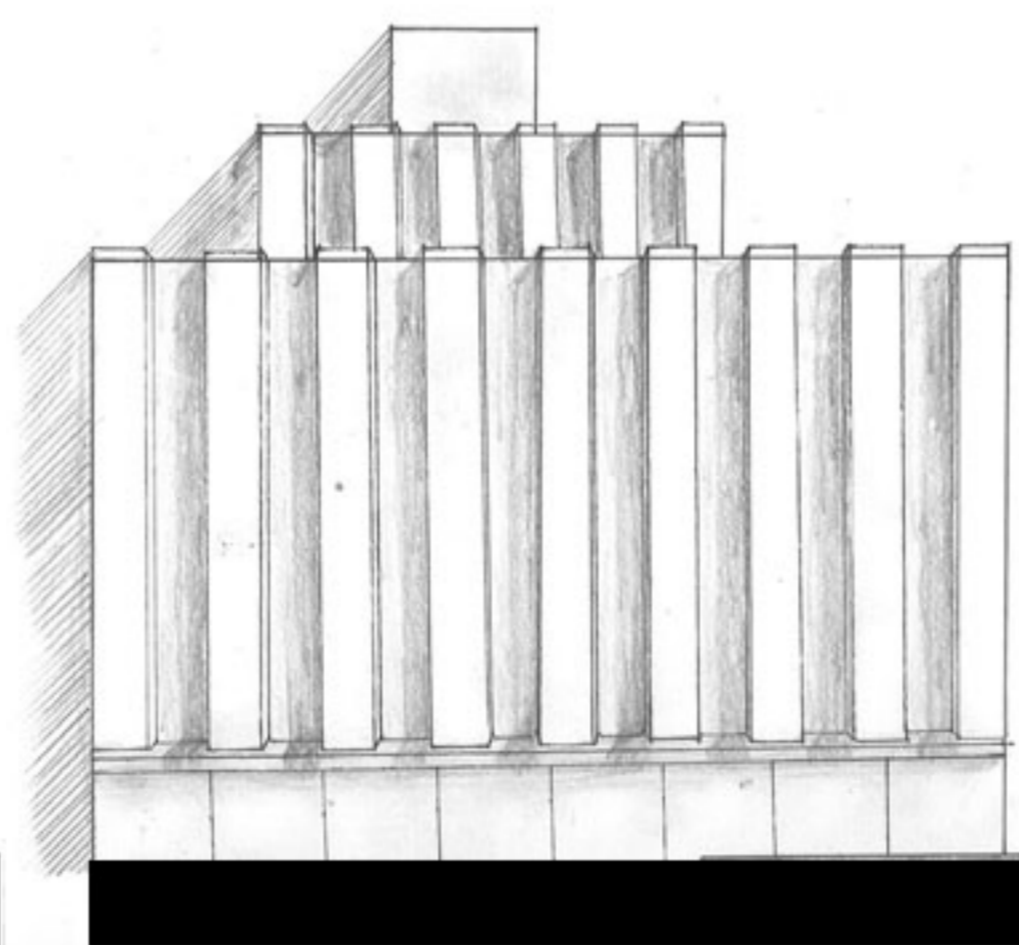
This display is a proposal for an updated New York City Theatre. It is located in the heart of New York City, a site presently occupied by the Rockefeller Centre, overshadowing a large public space intersected by the land axis. The proposed building bldges into this public realm, an explosion of arts and culture, the front steps inviting the public in to this cultural hub to visit either the theatre, gallery/display space, or the bar and function area. This buldging form the building takes expresses the way it holds so much cultural interest, appearing to explode out of its structural shell, peeling and buldging from a strict concrete box, into curved fabric bulbs and finally shattered triangles, creeping their way cancerously up the facade of the building to form the 'glass-house' like ceiling of the gallery space. At night the site poses equally impressively, a glowing bulb is seen from the park beneath as the interior lights illuminate the fabric prtion of the building and clearly articulate the silouette of the trangular pattern.



SITE PLAN F6  
scale 1:200



SECTION F6  
scale 1:200



ELEVATION F6  
scale 1:200