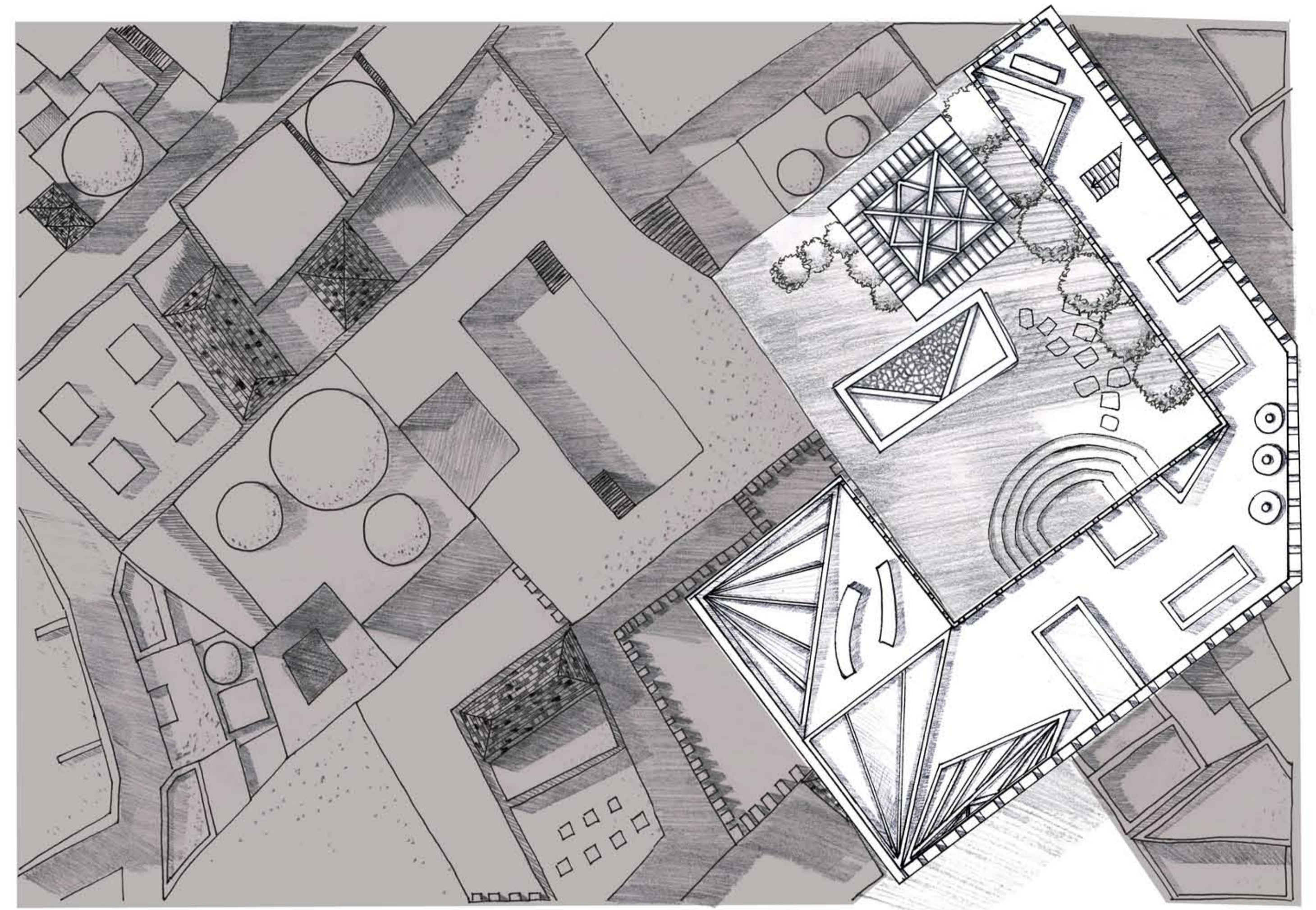


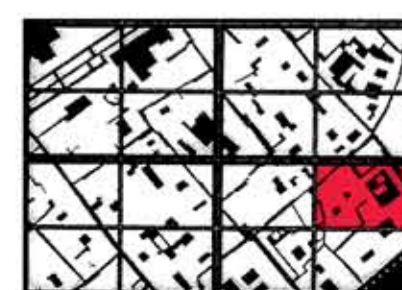
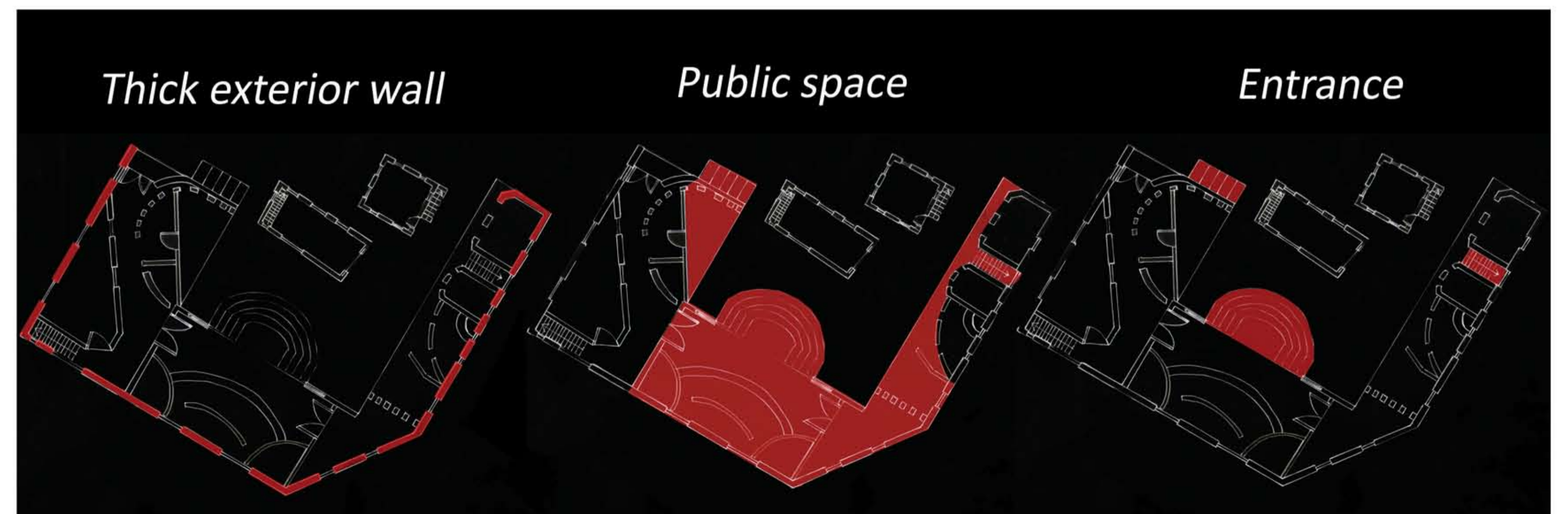


# Jerusalem Public Primary School

The JPPS is a community-based primary school located in the vicinity of the ancient part of Jerusalem city. Jerusalem, especially the eastern part has one of the most underfunded education systems in the nation. The challenge of JPPS is to create an excellent primary education centre for the children regardless of races based on the following philosophies: community collaboration, community integration and interaction with the nature.



Aerial plan 1:200 



Tze Hui Goh  
 309175607  
 Jerusalem Public Primary School (JPPS)  
 G4