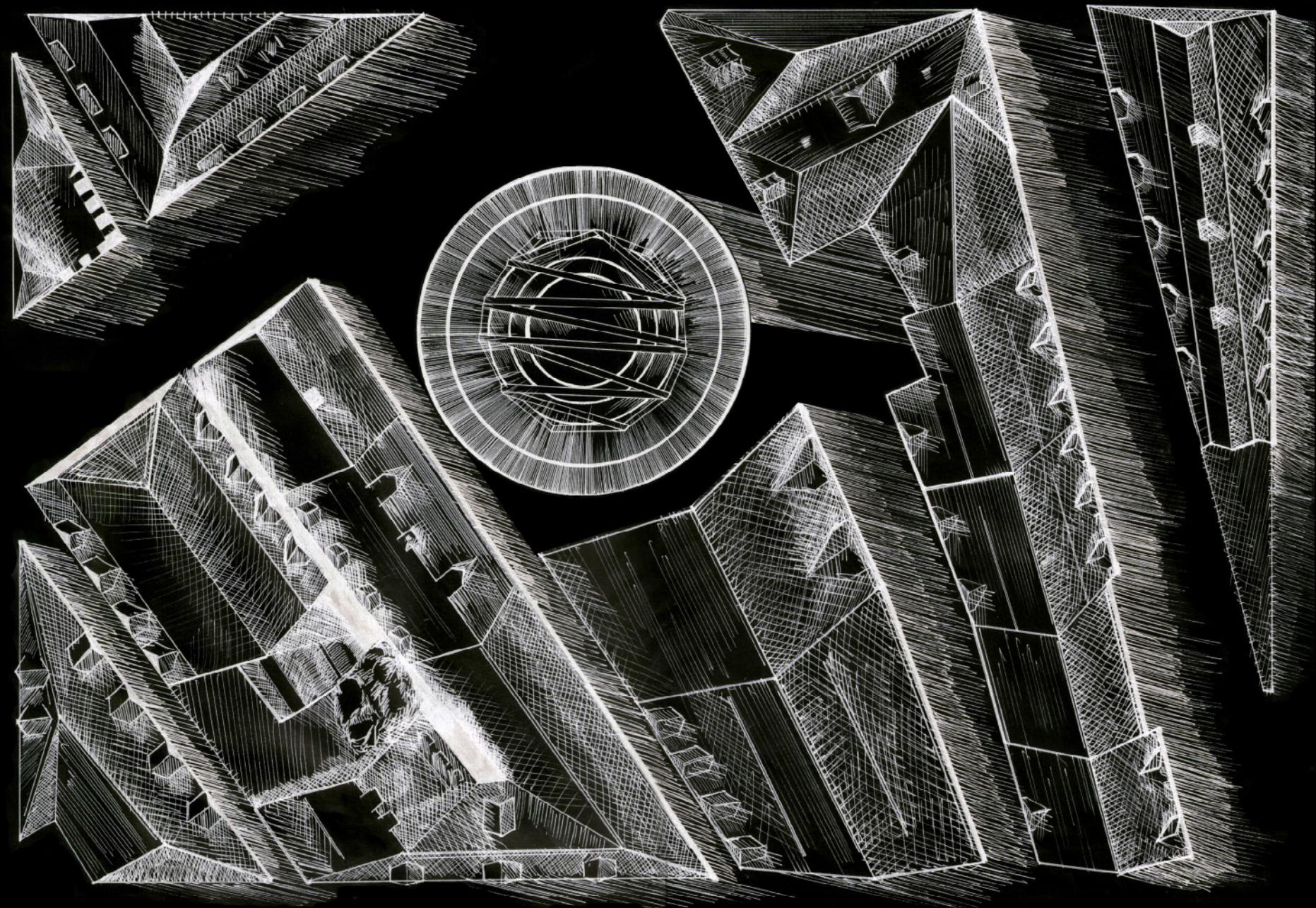


The Light House, T9

Pamela DeGabriele, 309222788



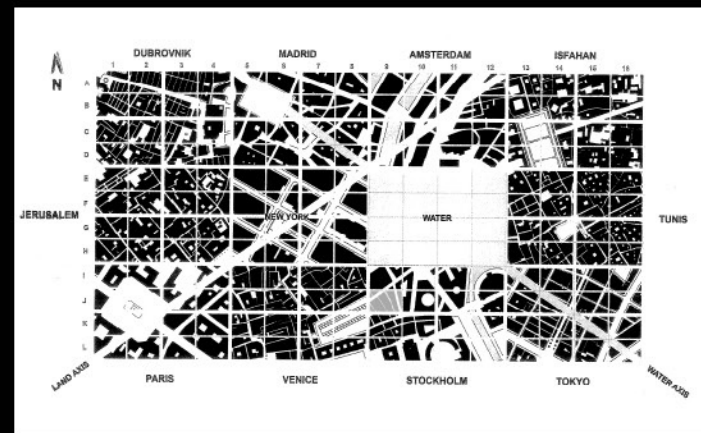
Spring



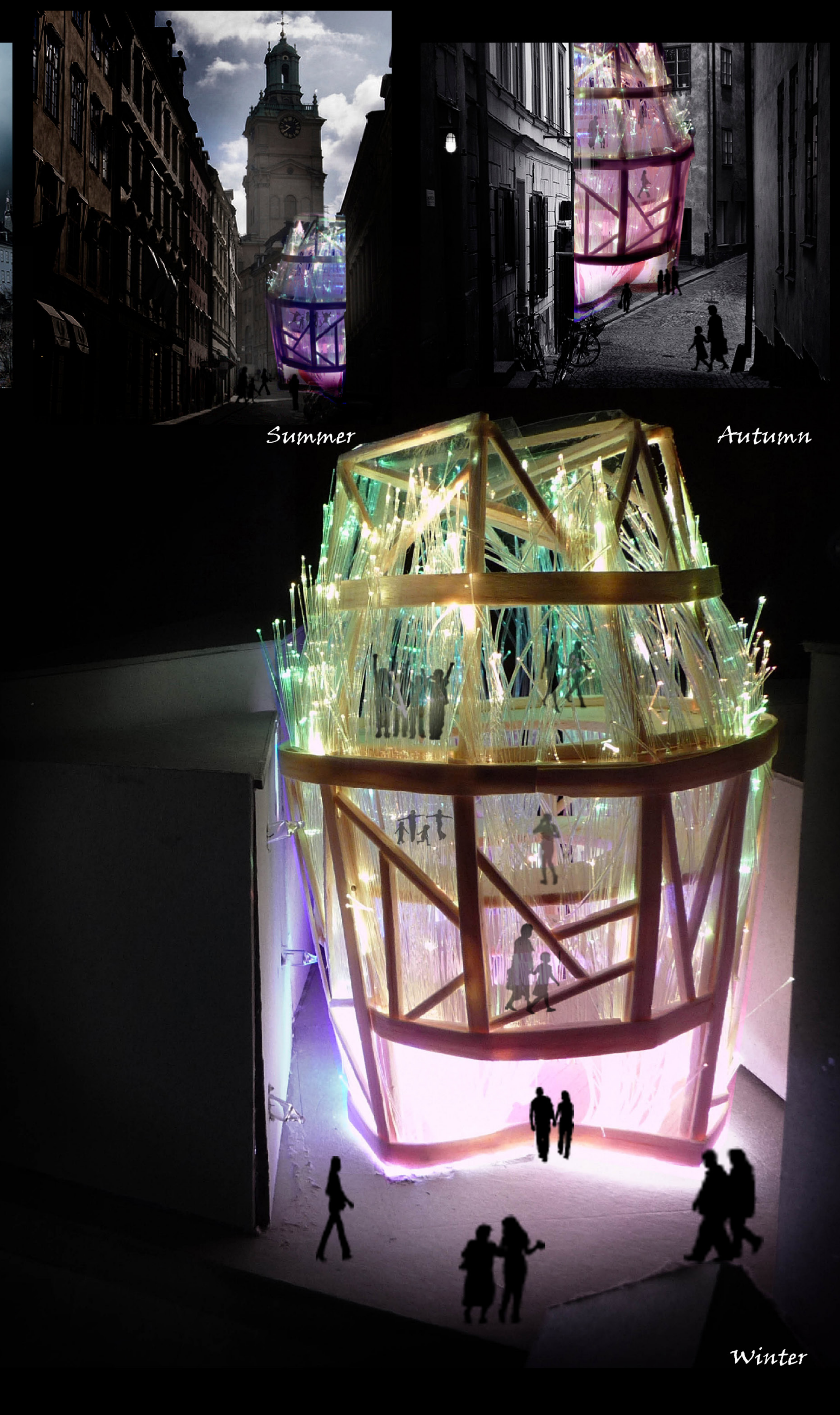
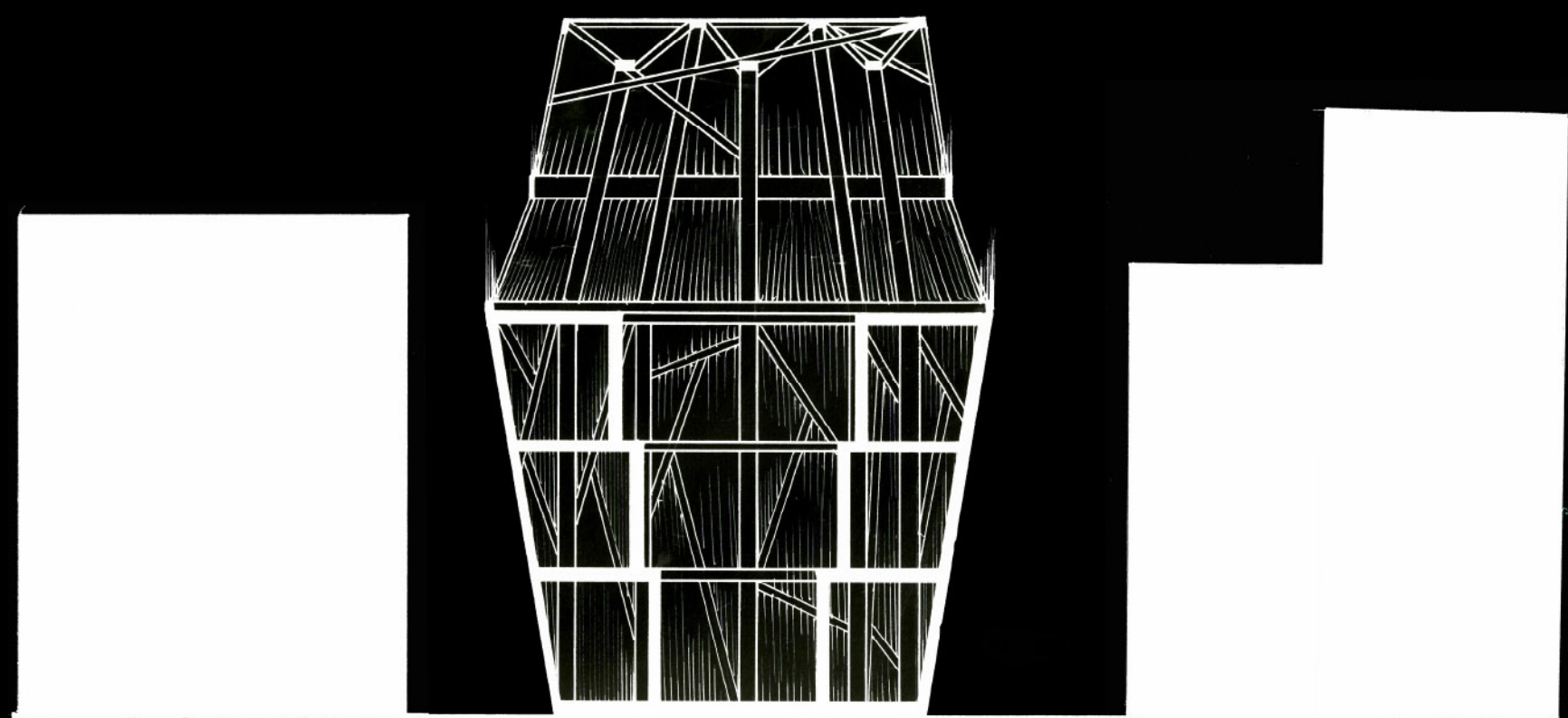
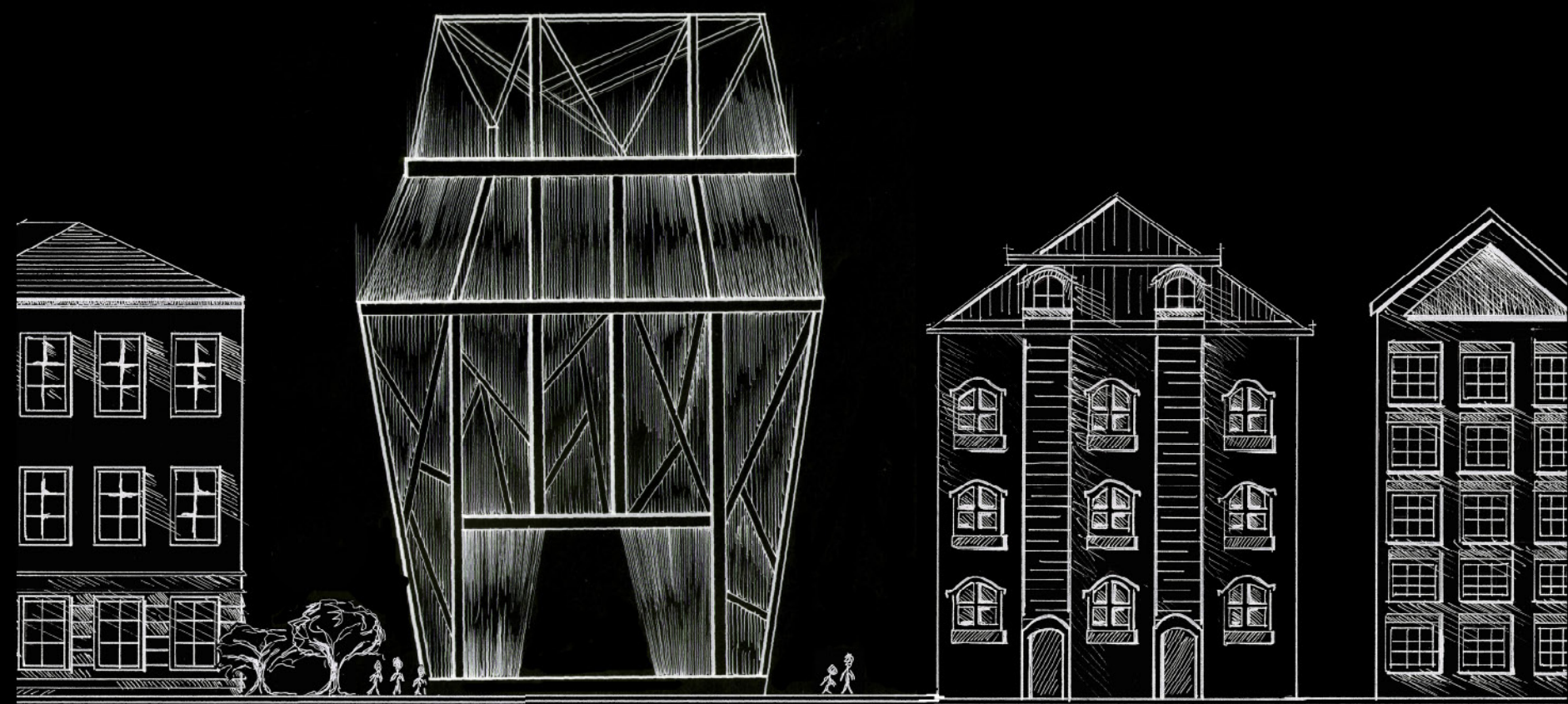
Summer



Autumn



My proposal is to provide the community with a place of refuge, meeting, facilities and above all; a place of light. The light is expelled from the optic fibres that compose the structure's cladding. Its frustum-shaped construction together with the vertical line created by the optic fibres is designed to channel the light into Stockholm's night sky. It will provide the population trapped in Stockholm's wintery darkness with some respite and in warmer months; it will lure the people with its array of mesmerizing colours. This community centre will reveal facilities for all ages. With study centres, a gym, restaurants and cafes, multi-function spaces, children's playgrounds, spas and much more; The Light House will be central to the life of each member of community.



Winter

The place to be....