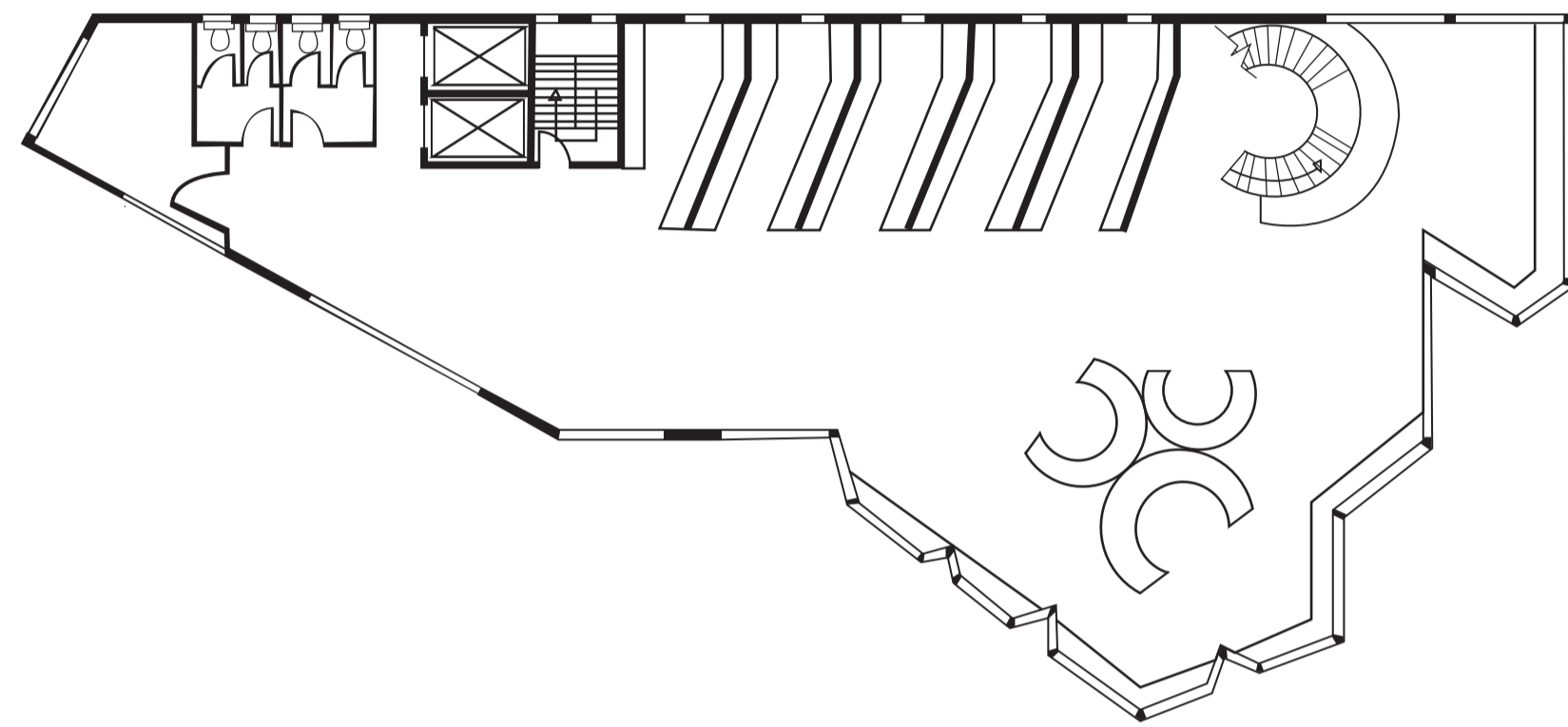
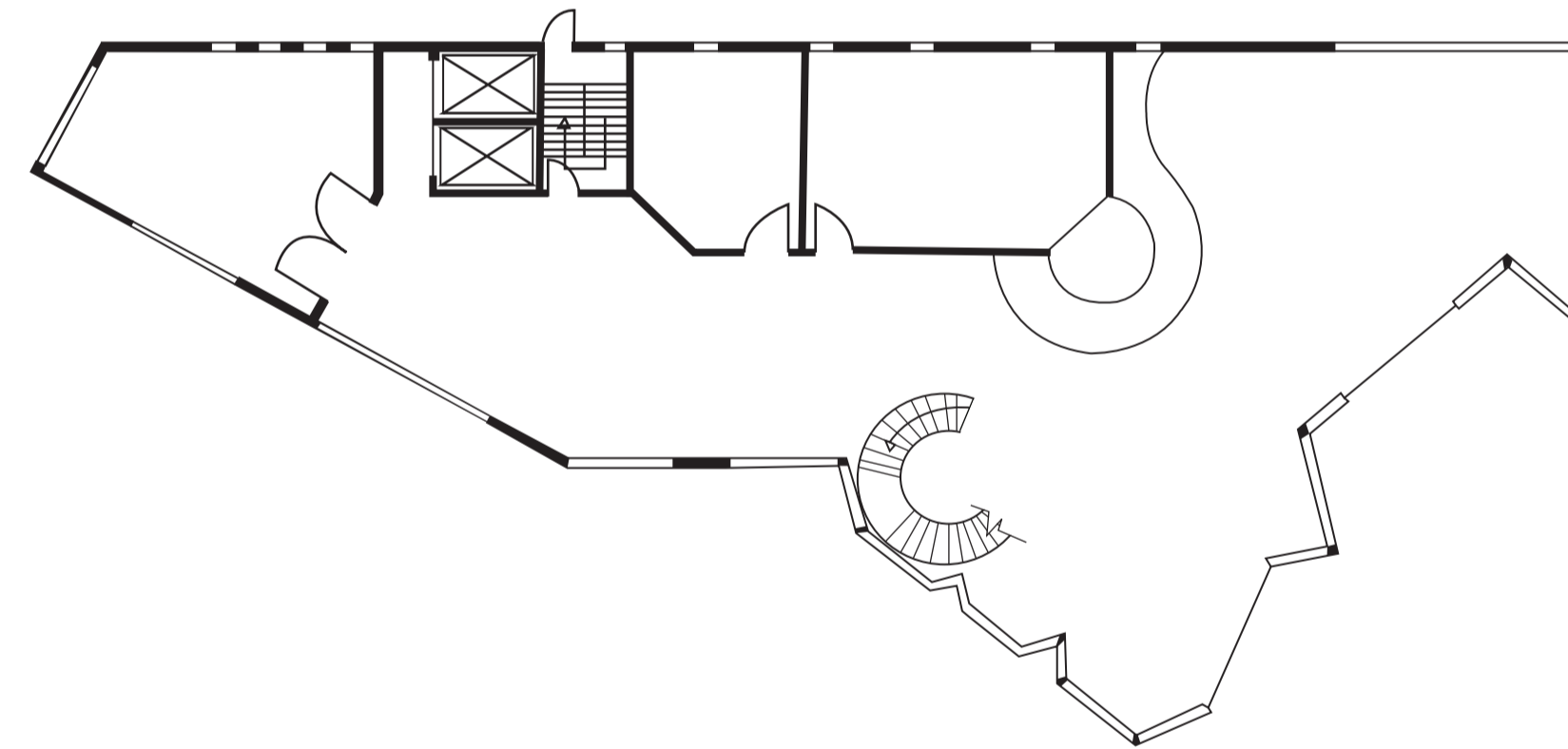


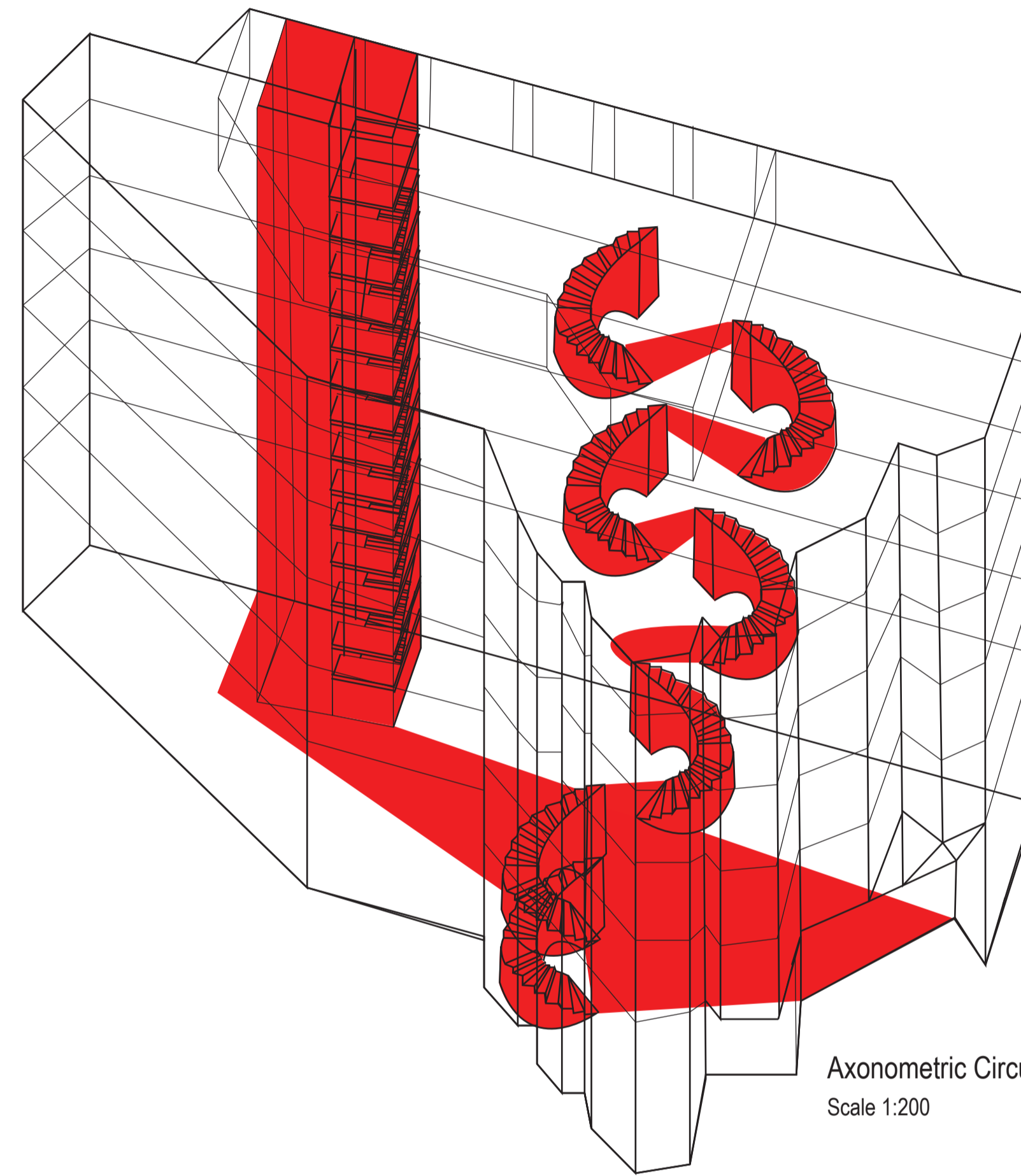
Roof Cafe Plan
Scale 1:200



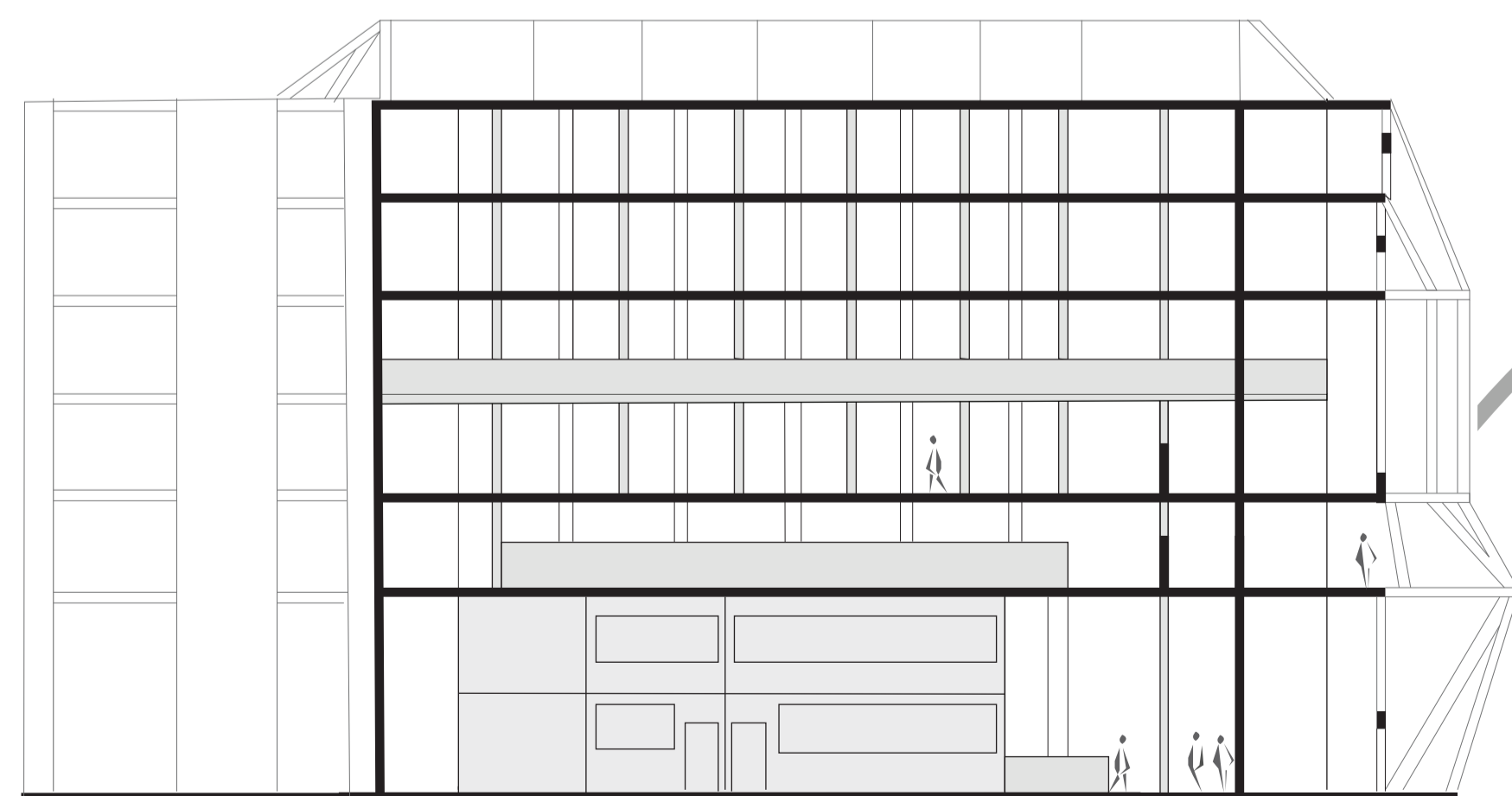
Third Floor Plan
Scale 1:200



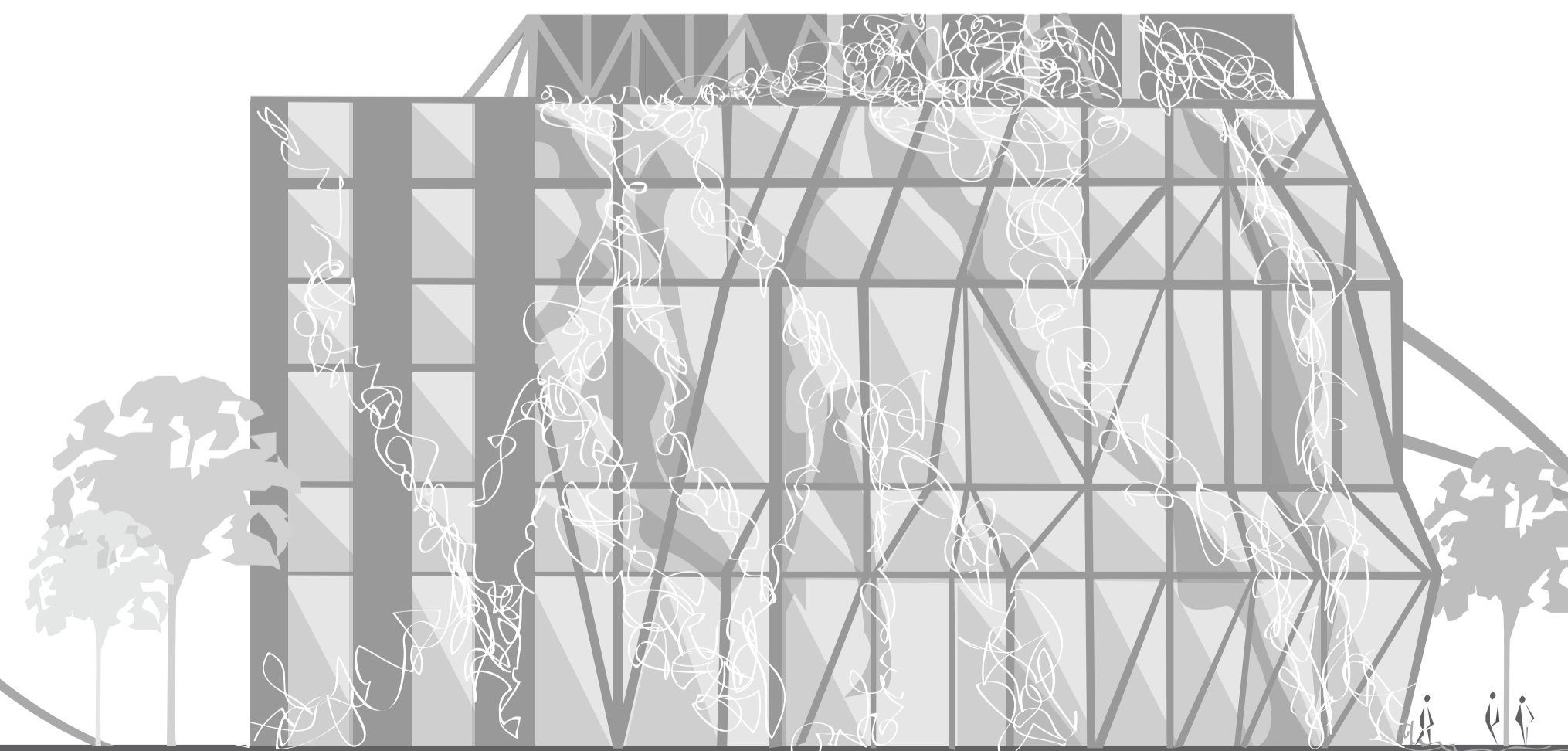
Ground Floor Plan
Scale 1:200



Axonometric Circulation Diagram
Scale 1:200

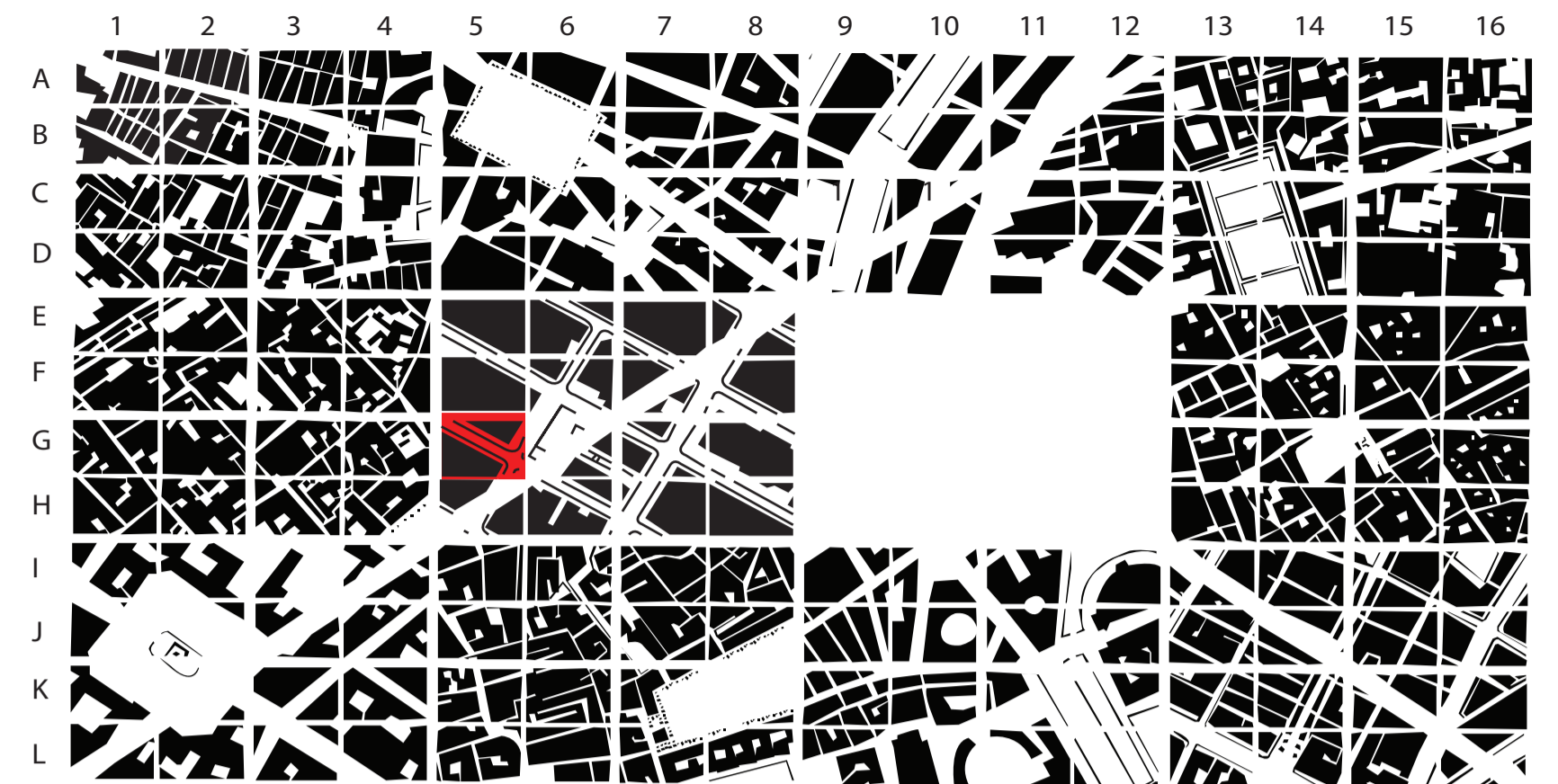


Section A:A
Scale 1:200

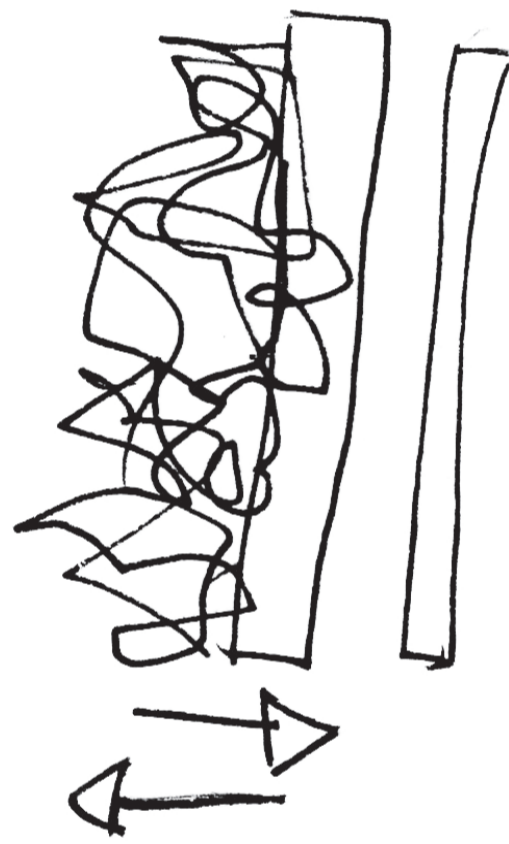


South Elevation
Scale 1:200

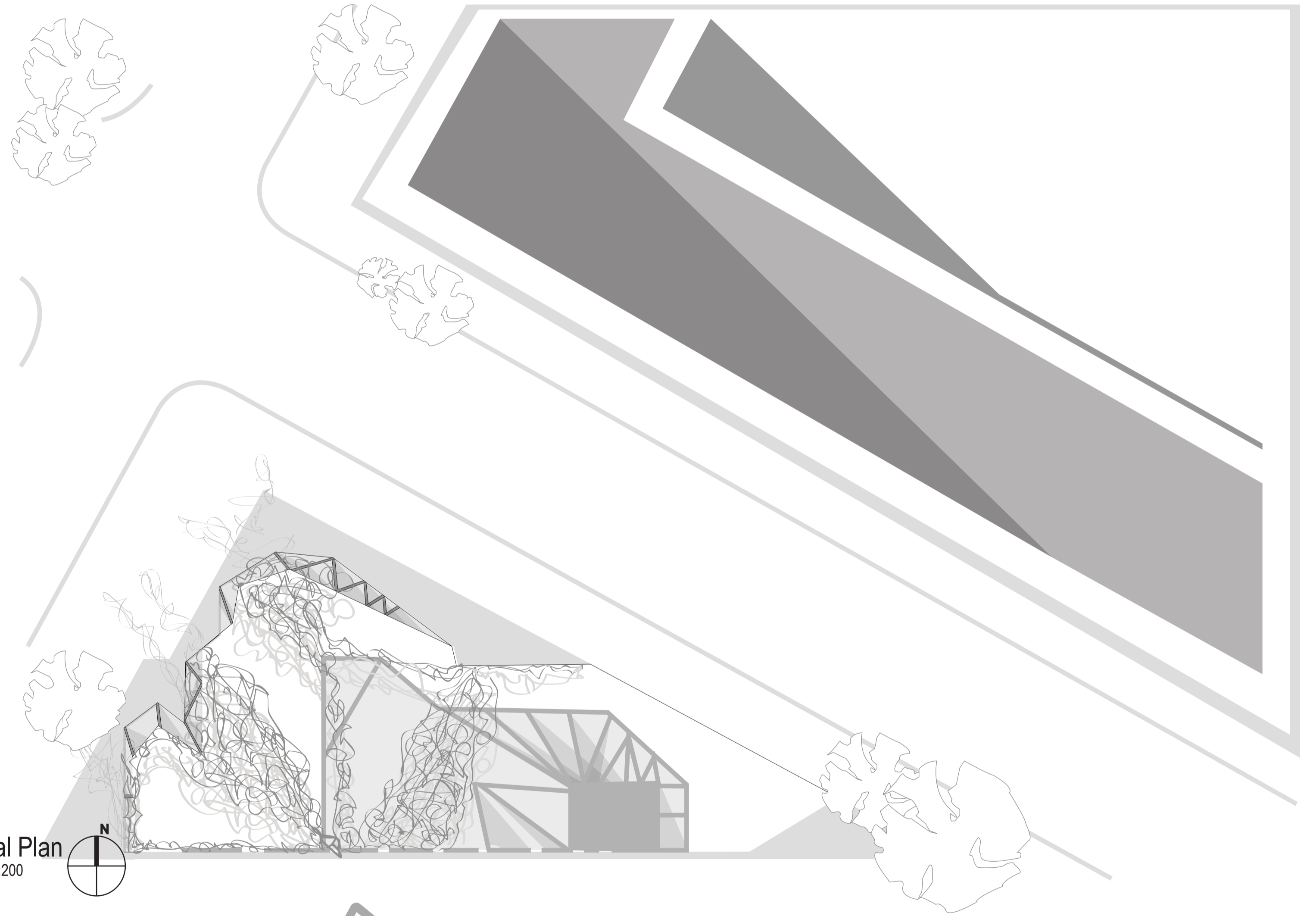




Location Plan
Scale 1:10 000



The urban landscape of New York City is dominated by skyscrapers and lacks buildings which encourage community and provide a place for residents and visitors to escape the bustle of the city. The position of this site, adjacent a public square, is well suited to a community focused building such as a library. My design is sympathetic to the context, not dominating the open space in statue or form. The interesting articulation of the facade at the front aims to embody the interior function, sparking the interest of New Yorkers, drawing them inwards. The program of the library focuses on providing reading spaces more than study or research spaces, reflecting the nature of libraries of the future. The cladding of the structure is a reinterpretation the creeping ivy found on libraries of the past, reflecting the interesting connection between buildings of the past and the present. The two distinct architectural languages present in the design represent the dichotomy of served and service space, as present within the design.



Aerial Plan
Scale 1:200



New York City Library

Katherine McCourt

SID:309 187 990

G6