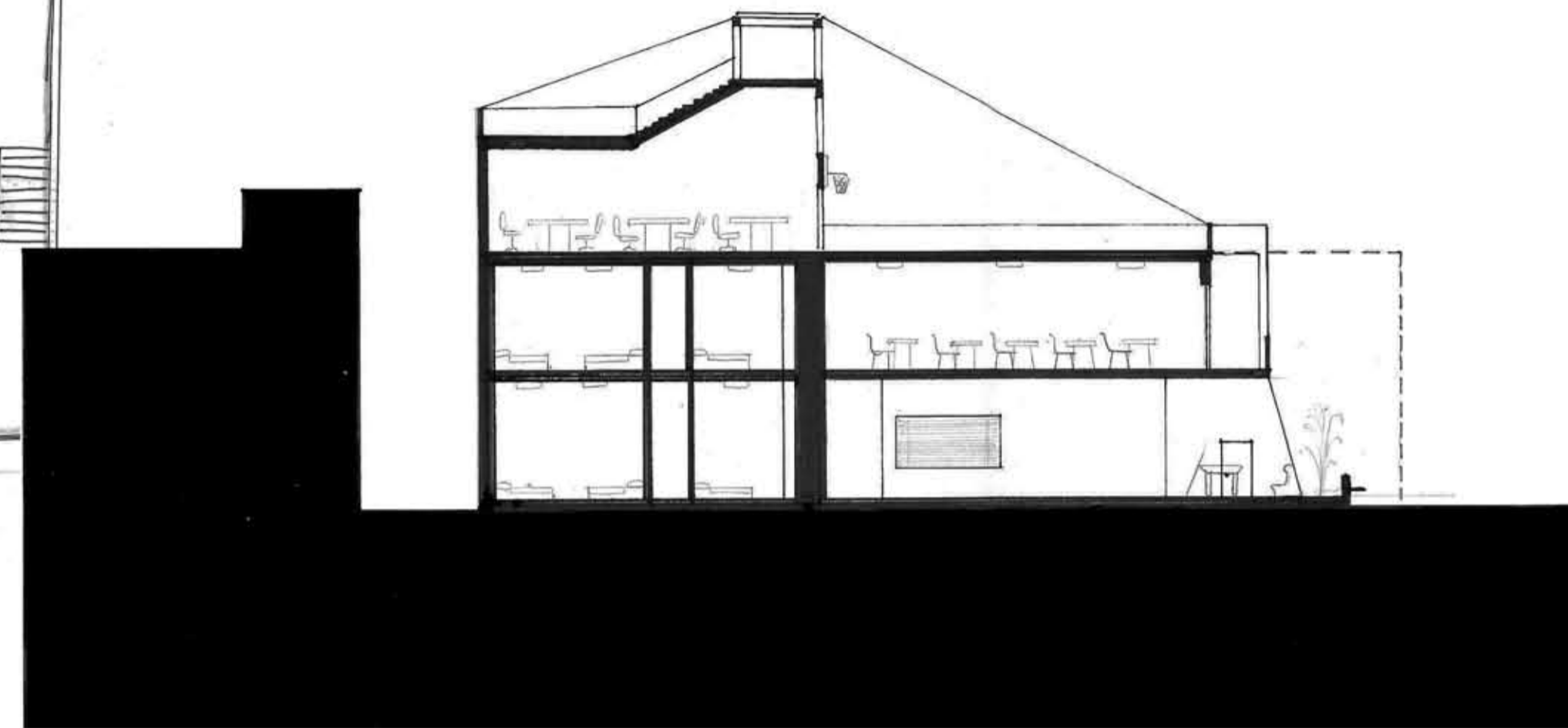


SITE PLAN 1:200

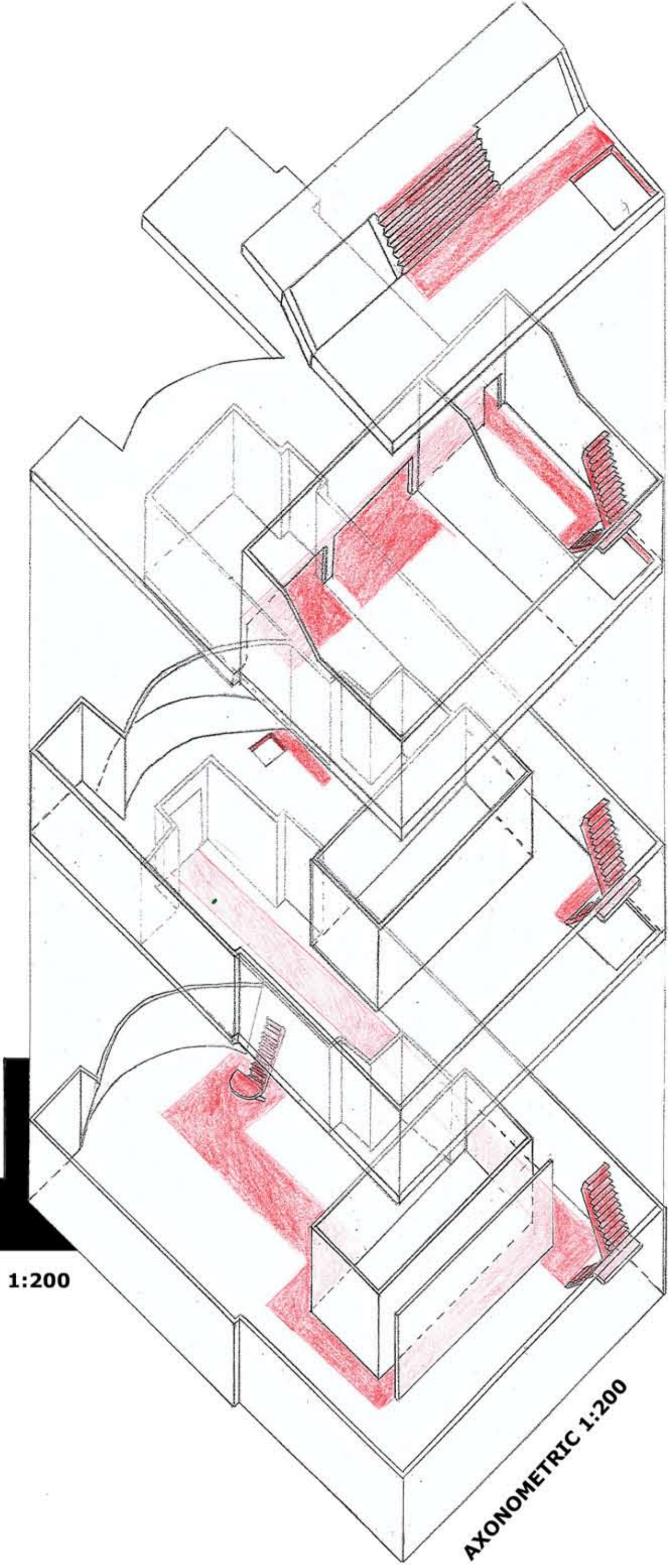
INTERNAL SKETCH 1: DORMITORY



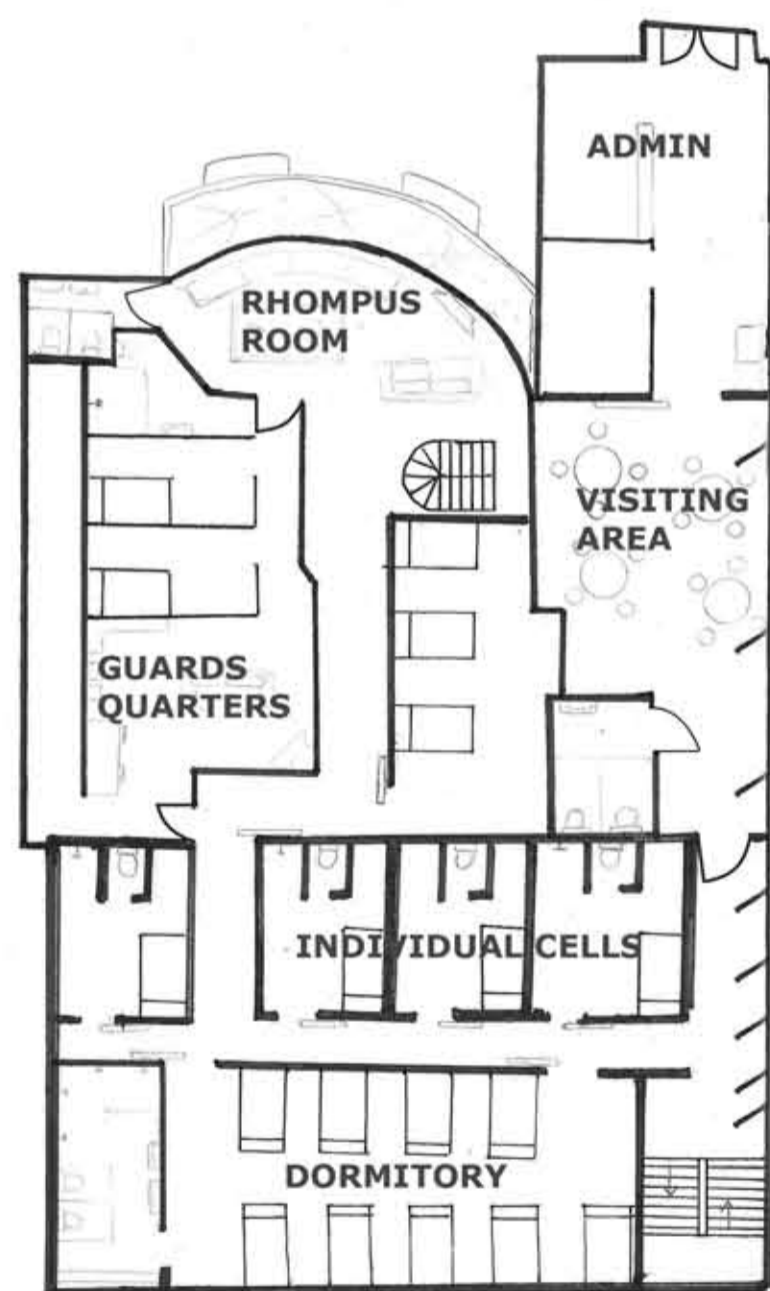
INTERNAL SKETCH 2: RHOMPUS ROOM



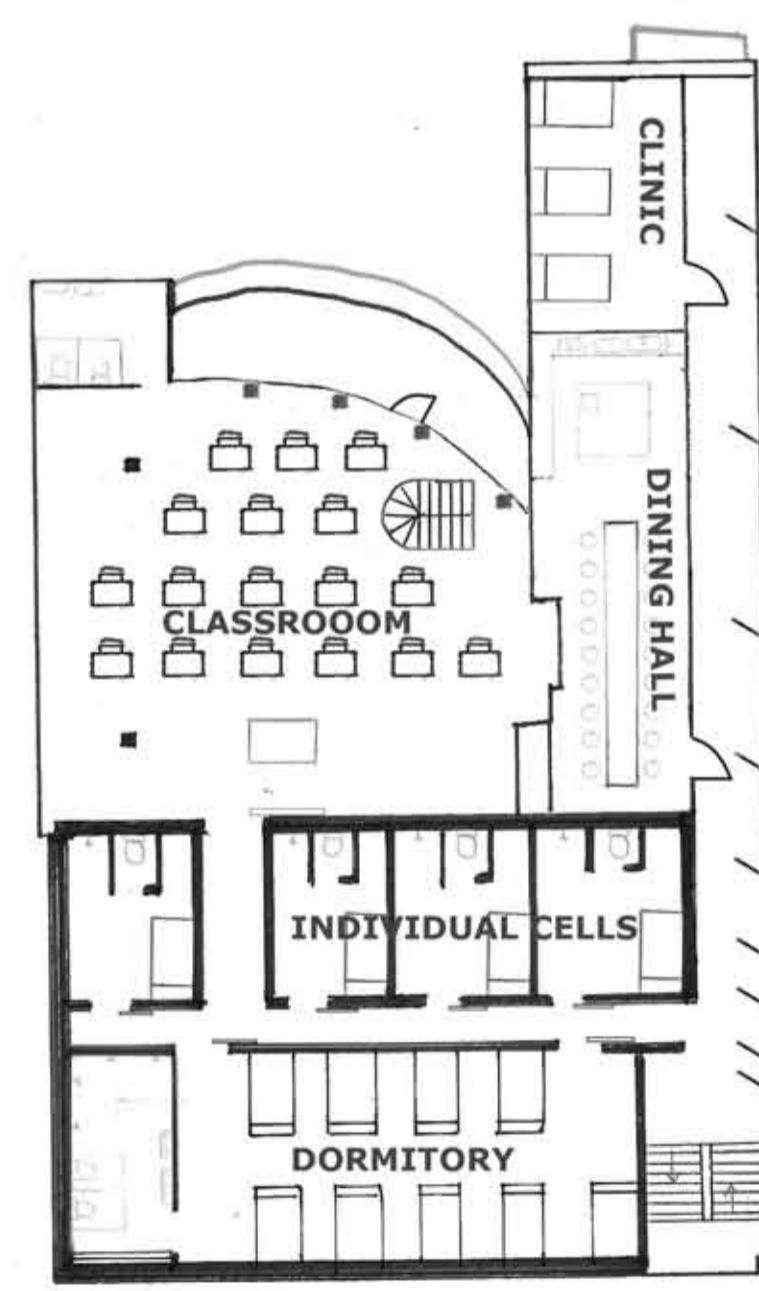
SECTION 1:200



AXONOMETRIC 1:200



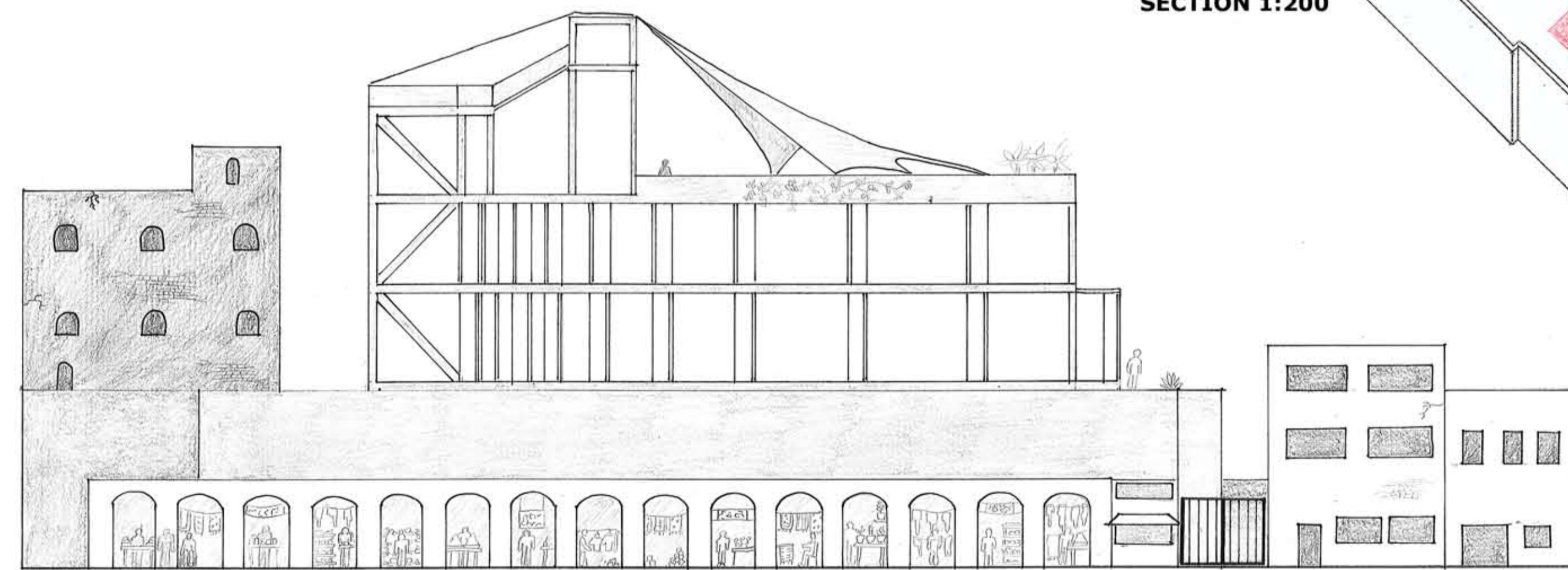
1ST FLOOR



2ND FLOOR

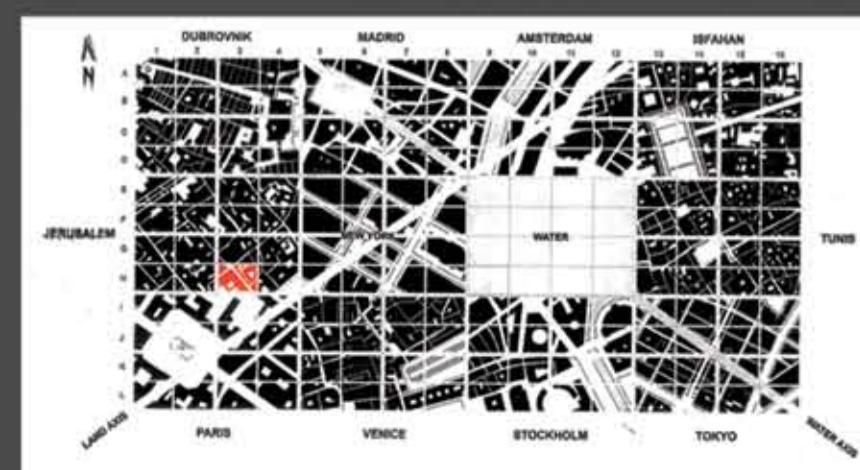


3RD FLOOR



ELEVATION 1:200

H3



# Juvenile Detention Centre

This Juvenile Detention centre has been designed with a focus on rehabilitation rather than punishment. The Primary focus of this centre is to get de-railed youth back on track rather than continually punishing them, pushing them further and further into a cycle of criminal activity.

Designed to be enlightening rather than oppressive the centre has large spaces and high light penetration. Taking advantage of its hilltop position, the centre opens its façade to an expansive view of Jerusalem allowing the prisoners to feel a degree of freedom whilst in confinement. Constructive activities are encouraged with plenty of space dedicated to productive outlets such as the wood workshop, rooftop garden and gym area.

Michael Buddee  
309191963



POSTCARDS