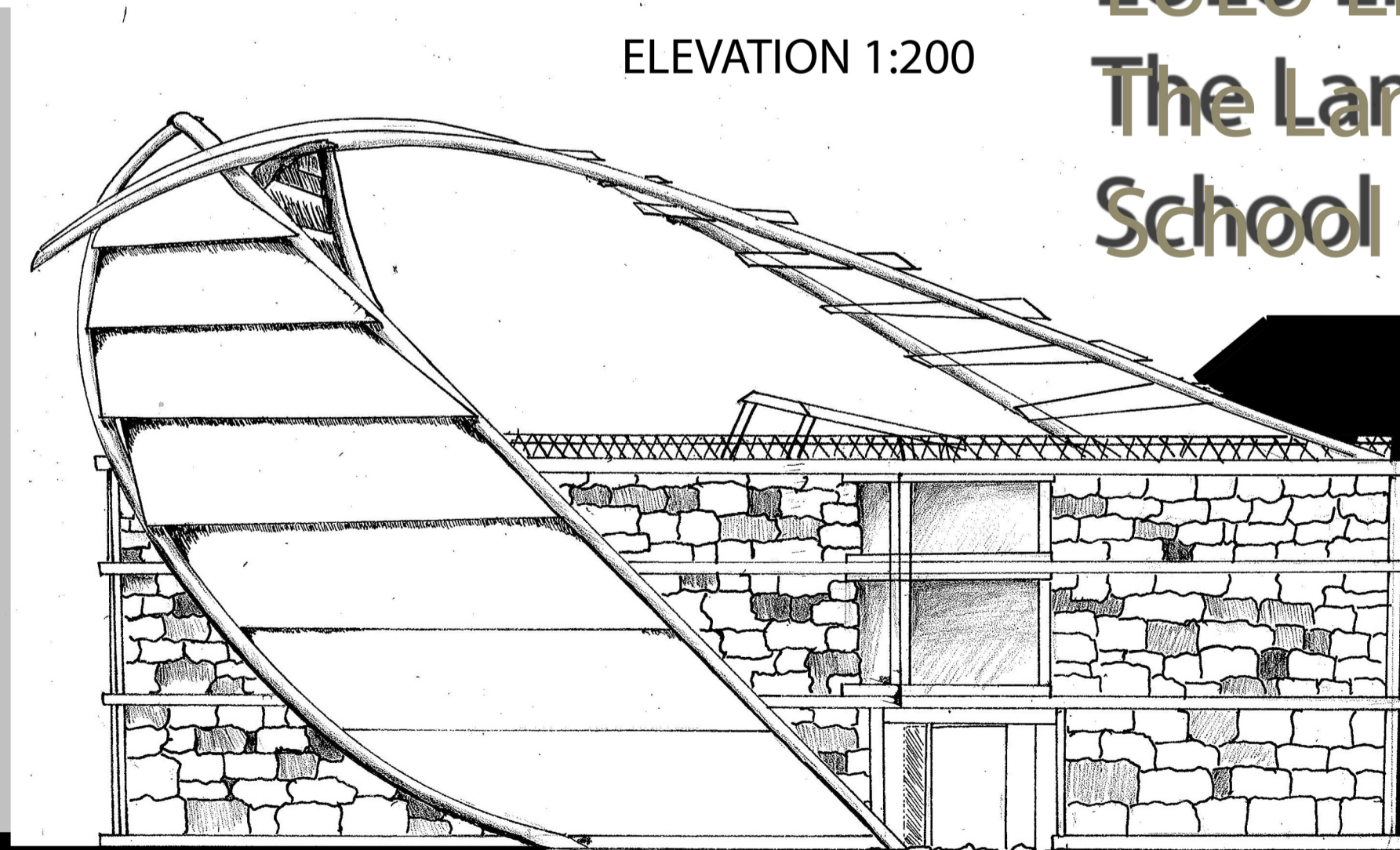
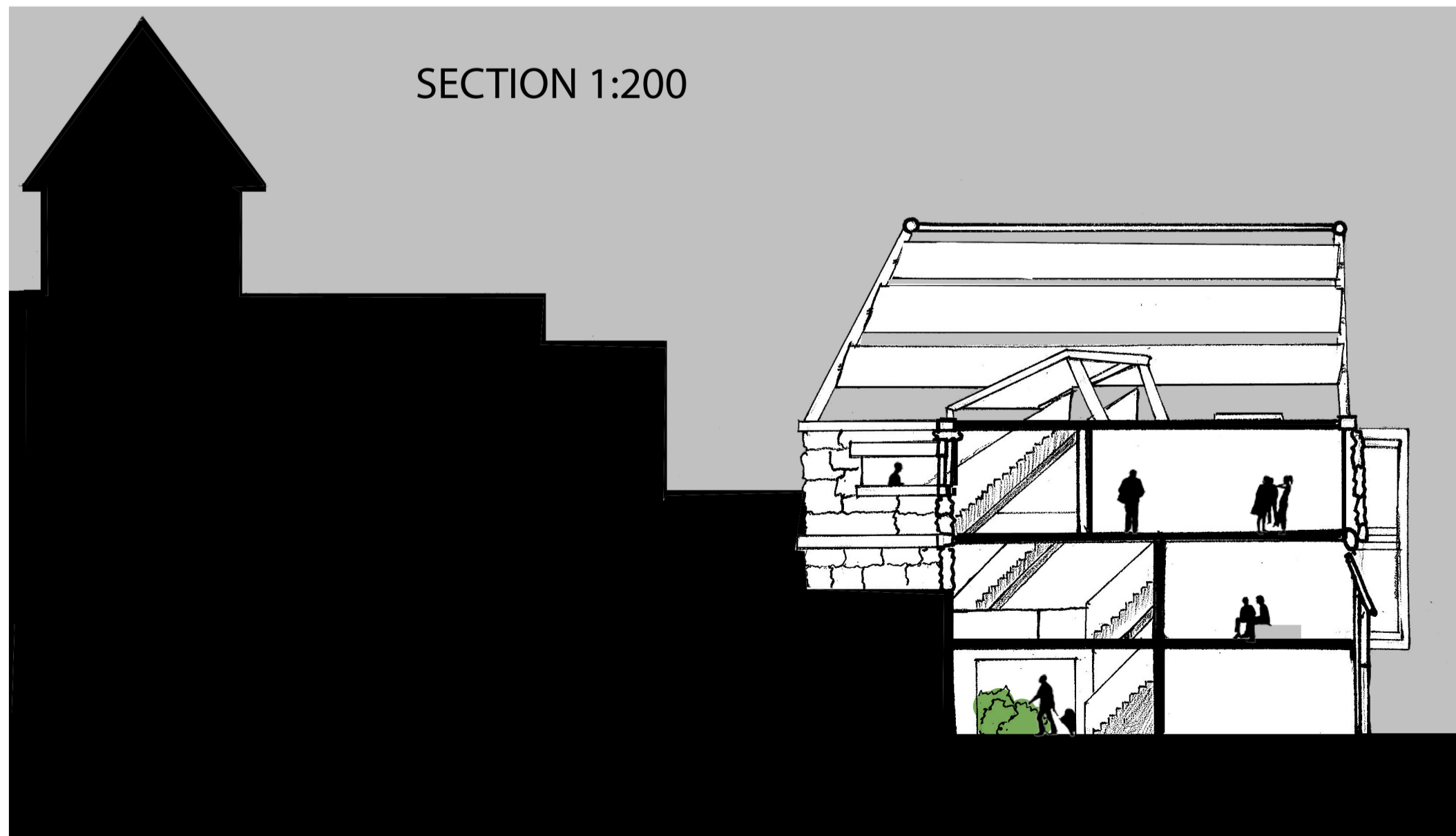
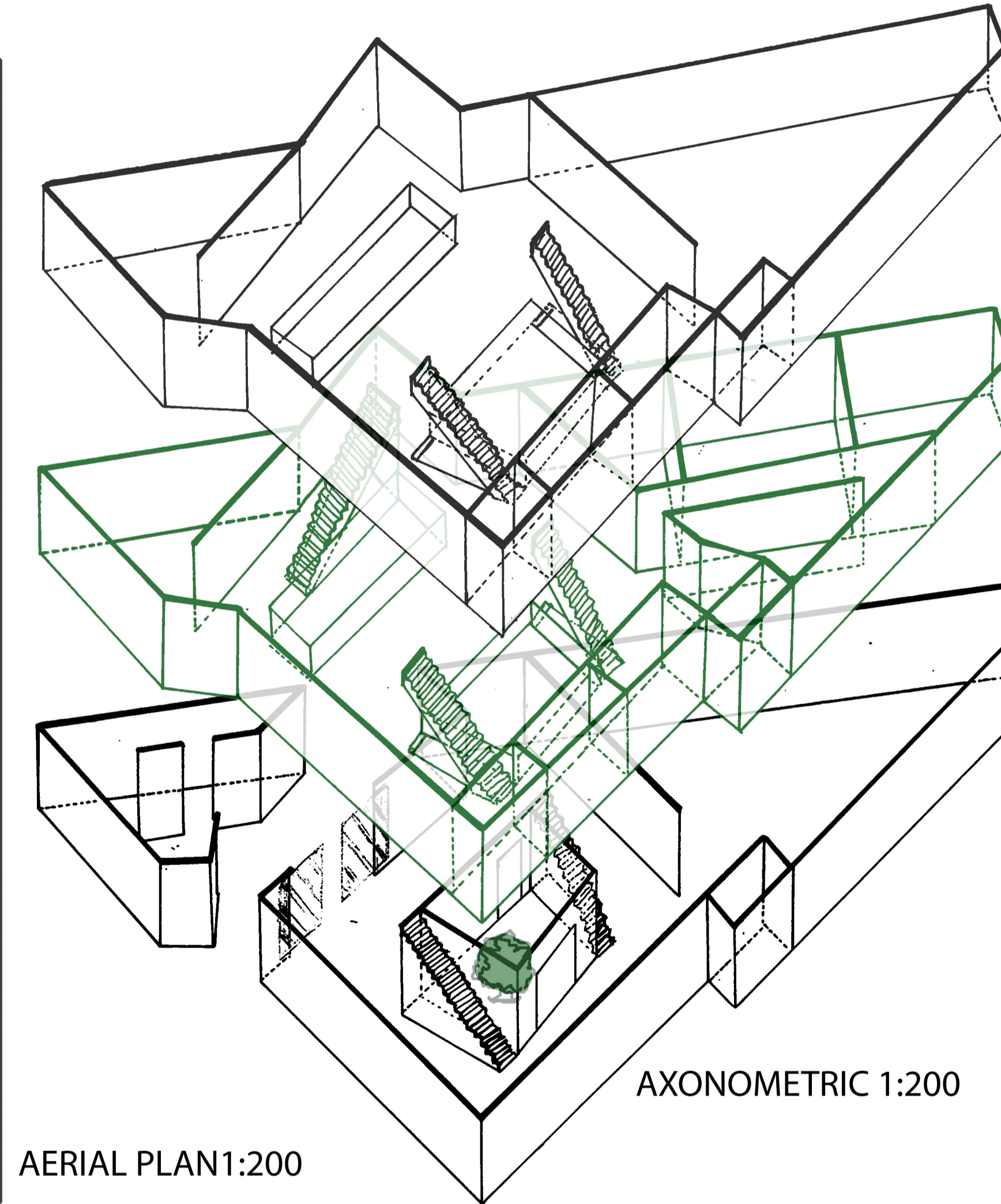
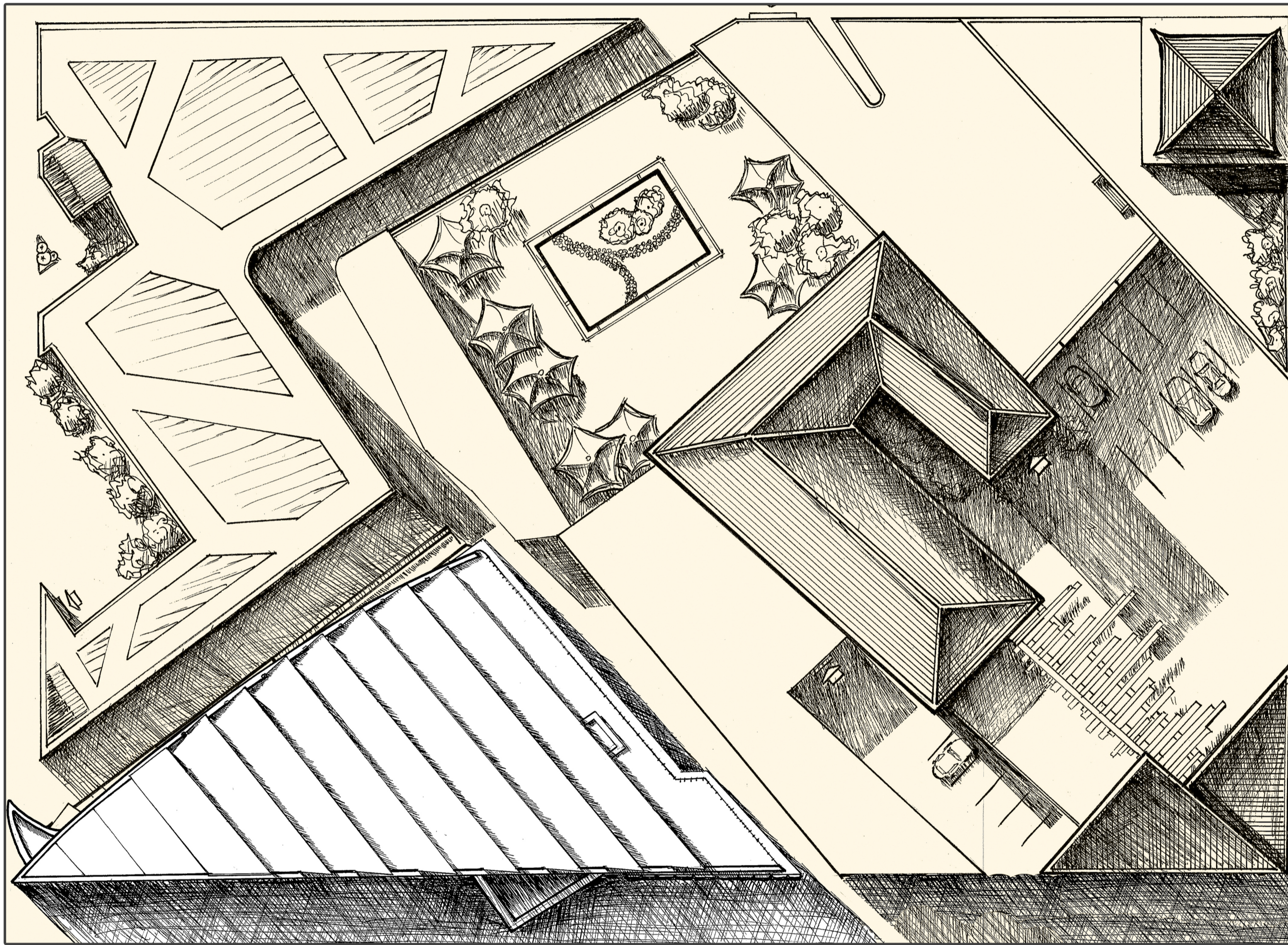
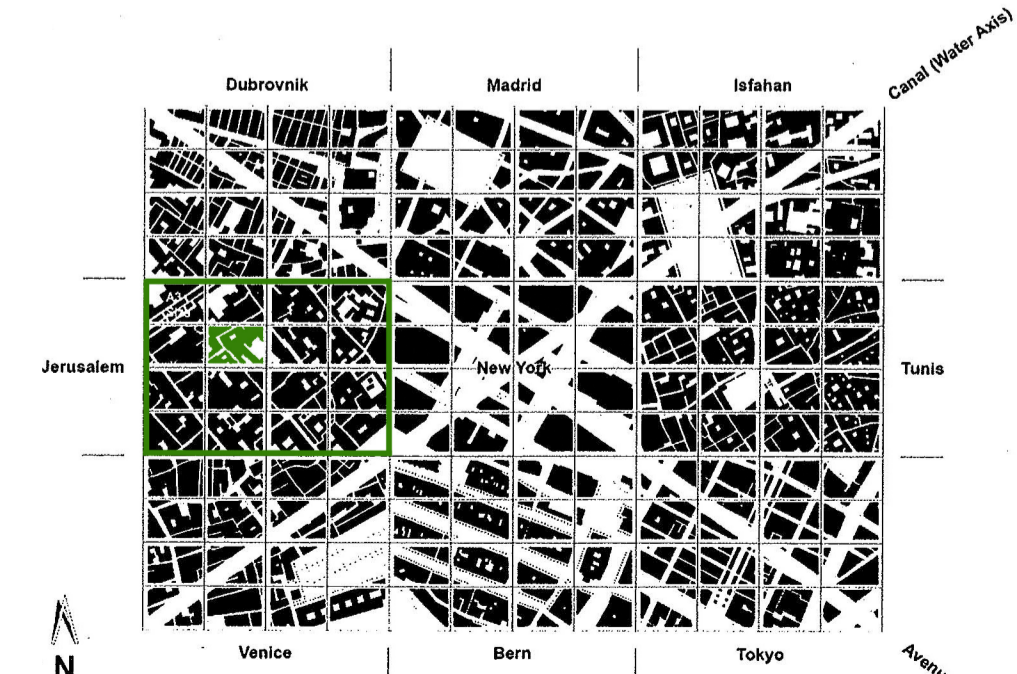


The main idea of this building was come from three different main languages in Jerusalem. As a language school in Jerusalem, nothing is more important than the tool of ideas transforing- the language. Those three leaves-shapes represent the three different languages which are ENGLISH HEBRI and AREBIC and facing different directions. Material been used is an other focus. The combination of used material of traditional J's stone the the morden material, shows up the unite and also shows up the conflict of the past and the future.



LULU LIAO
The Language
School in Jerusalem



SITE PLAN 1:10 000