

# E2-Artists' House and Exhibition Centre -Jerusalem



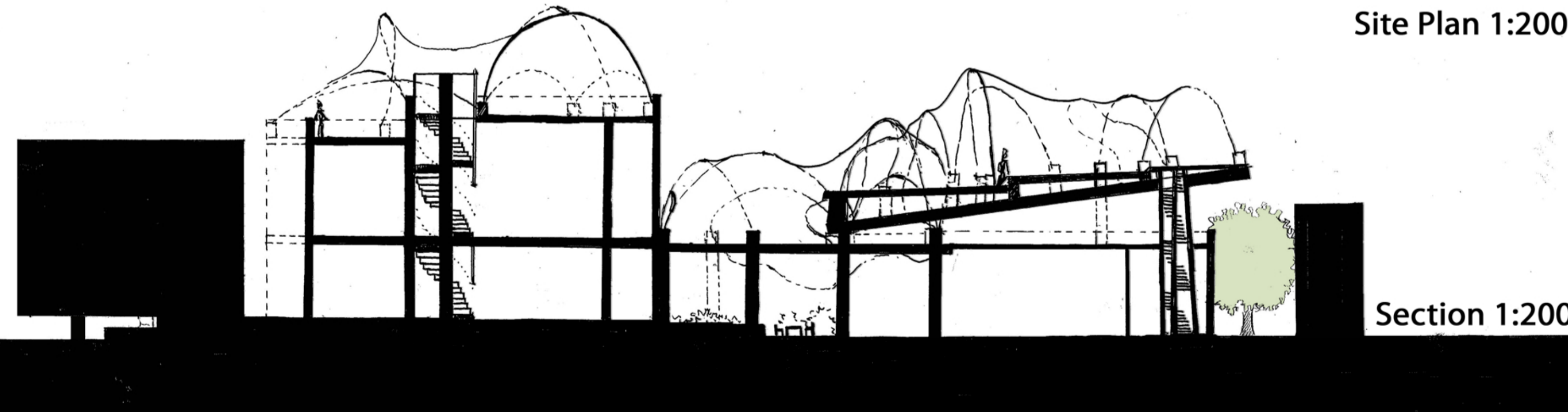
Location Plan 1:10000

Name: Kanru Yang SDI:307010635

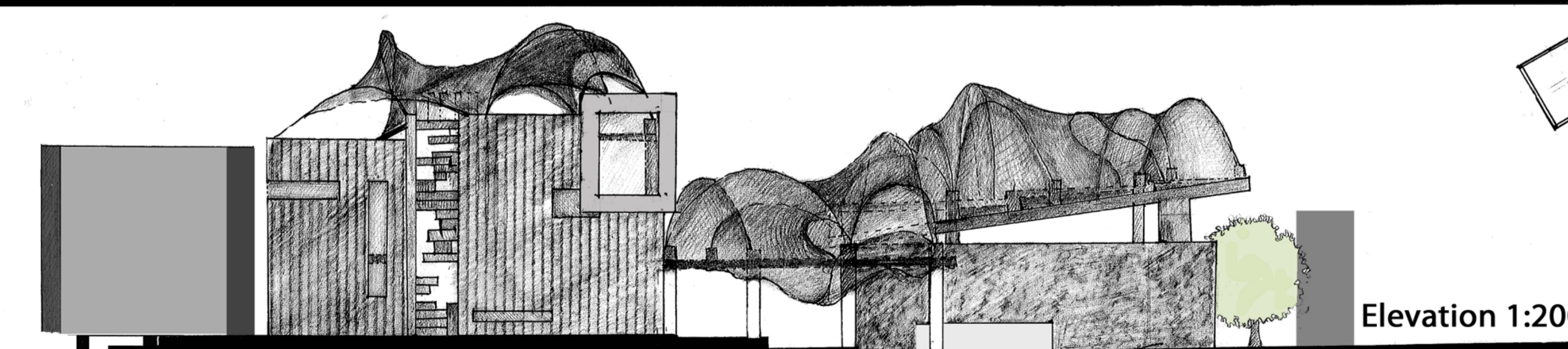


E2

Site Plan 1:200



Section 1:200



Elevation 1:200



This design including the so called "Artists' House", the Arts Exhibition Centre and a foot bridge which links these two relevant buildings. The idea of the Artists' house came from the form of Bag packers Hotel, but instead of just accommodations for travelers, the Artists' House provides a enjoyable space for those artists or arts lovers who want to work and live in Jerusalem for a period of time. The footbridge links the Artists' House with the Arts Exhibition Centre where could hold arts exhibitions, shows and provides a space for communications. The main concept of this design is to create a opening, friendly space for artists, designers and those people who love arts and Jerusalem to enjoy and work with the incredible arts and cultures of Jerusalem.

