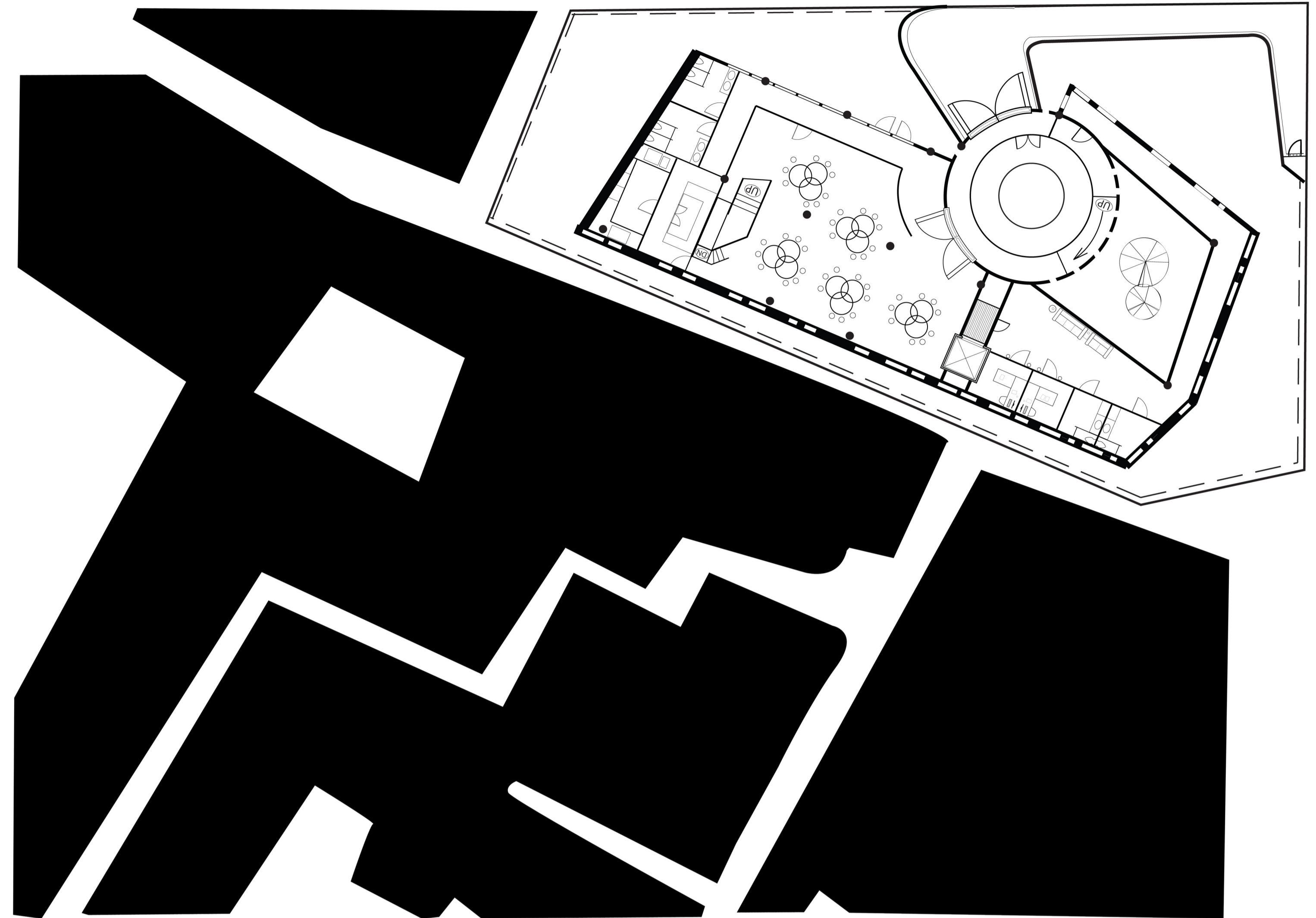
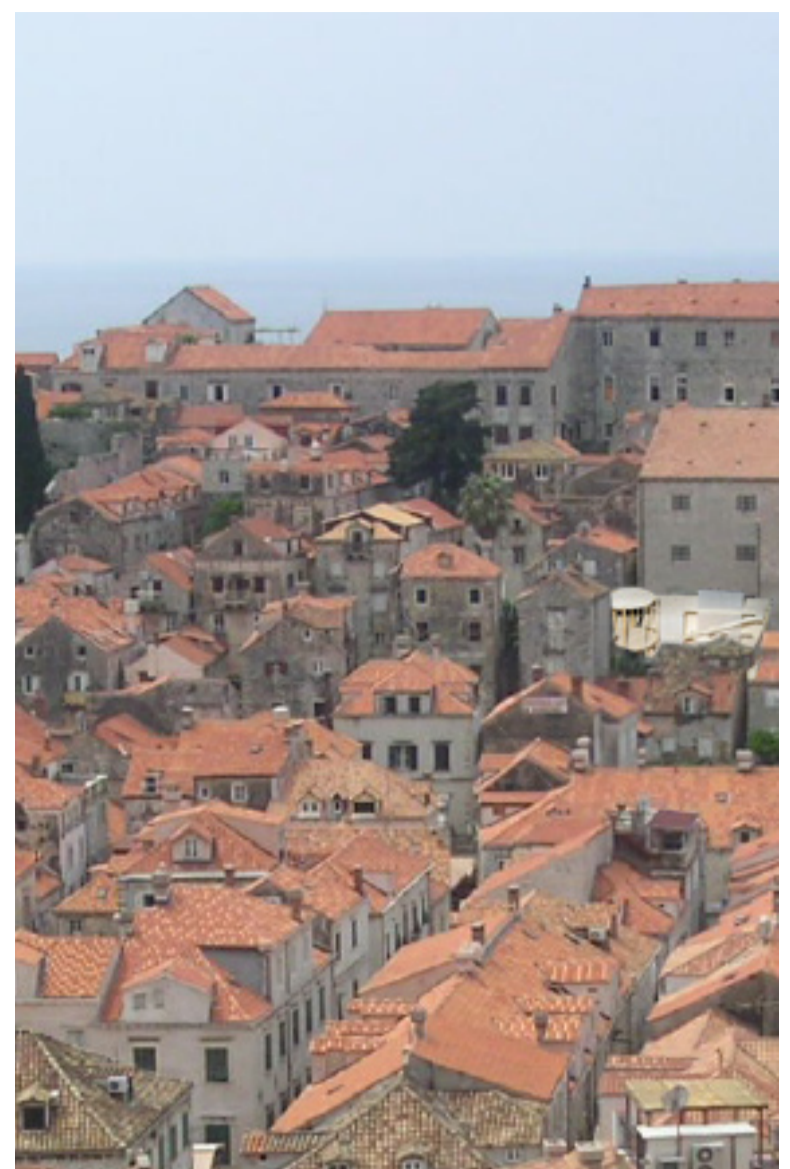


D2



3



AERIAL PLAN OF SITE
1:200 N↑

The Orphanage houses up to 50 children; both infants and primary aged students. The site D2 is located near the south west corner. Nunneries, St Ignatius' Church and various religious buildings surround the site. 87% of people in Croatia are Roman Catholic; the prominence cannot be ignored within the formulation and realisation of the design.

The main function for this building is to provide orphans with healthy lifestyle that incorporates recreational space, as formal living spaces.

- Main program:
- Dining room
 - Bedrooms
 - Recreational Area
 - Religious space

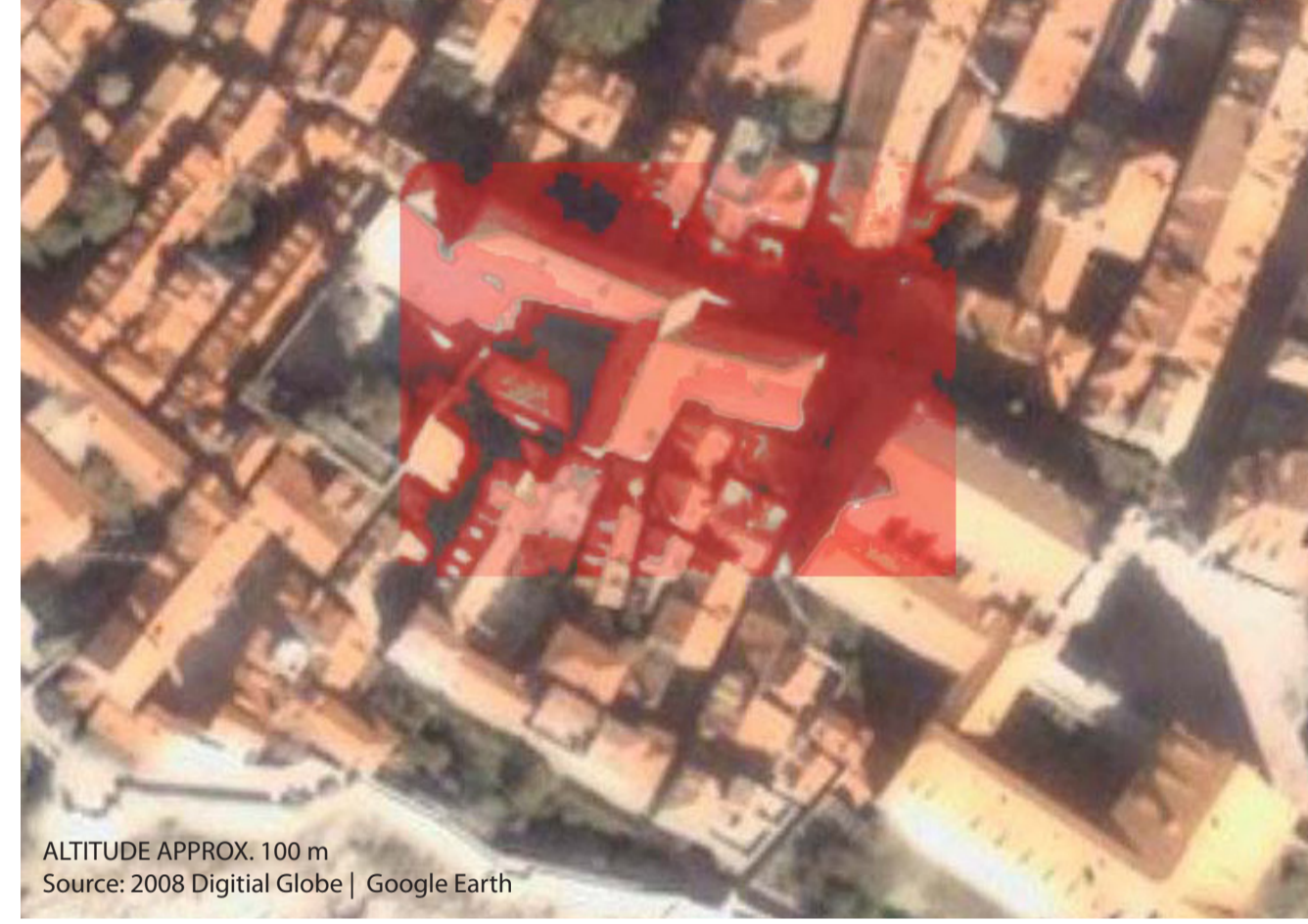
A large proportion of the site is dedicated to recreational space. The building acts as a giant playground where character development, interaction with peers, discovery and motor skill development are encouraged.

The building as a whole encompasses Catholic ideologies, representative in the Council of Nicea; salvation, a celebration of God the father and creation are some ideas woven into the fabric of the building.

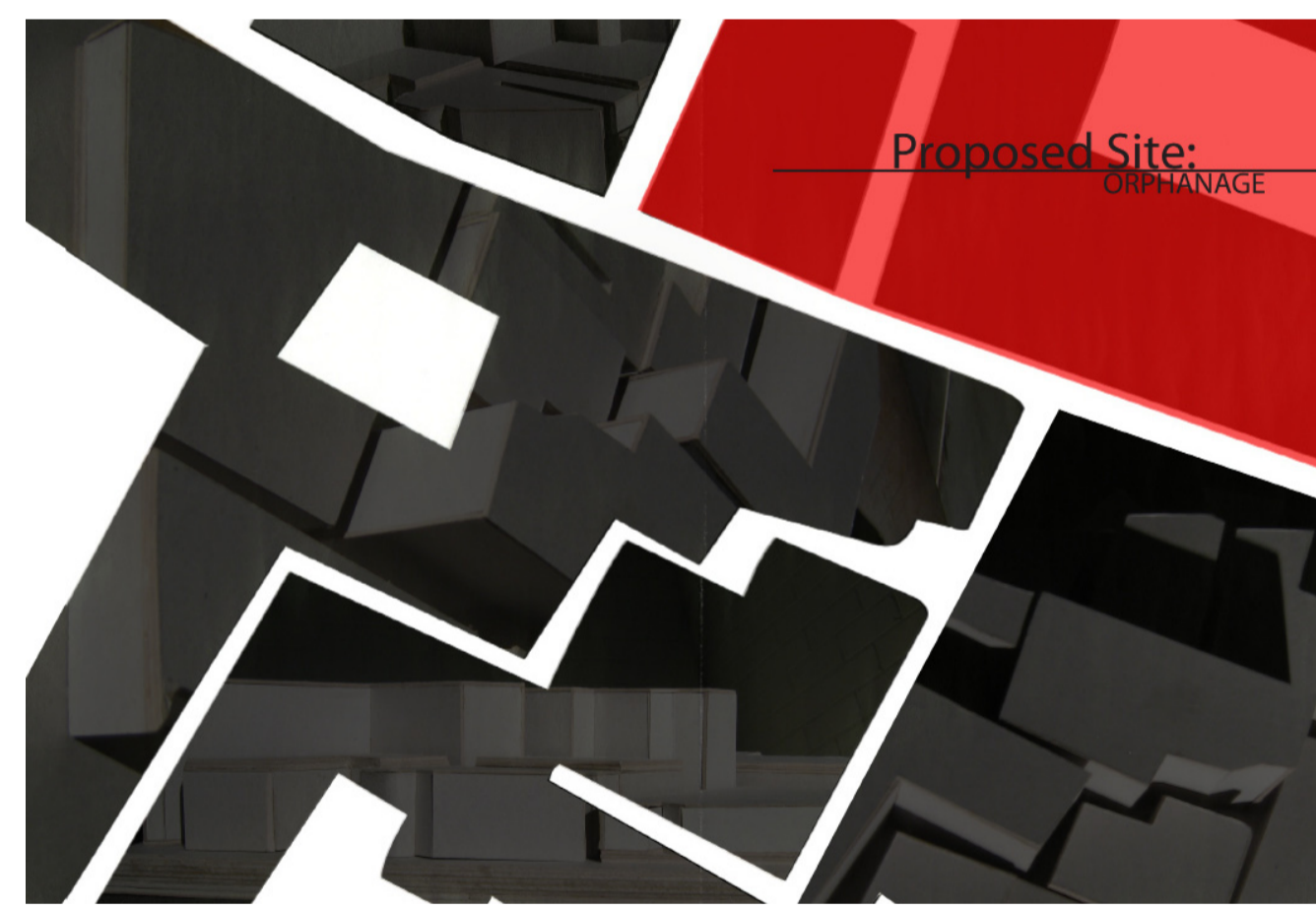
The central element of the building hinges heavily on the Prayer Tower. The double ceiling height space, accessed via a 'pilgrim walkway' emphasises not only the significance of personal spiritual growth in the children, but also the values on which the people of Dubrovnik are founded. In order to incorporate the orphans into society, they are taught the basic tenets of Christianity.

Background:

1



2



CONTEXT OF SITE

1. Satellite View (Approx 100m)
2. Proposed Site
3. Postcard Images



MERCIE DING
SID #: 308214048

Reference Images



CONCEPT:
A building as a Spiritual Sanctuary and
A building as a Giant Playground