

info

produced by:

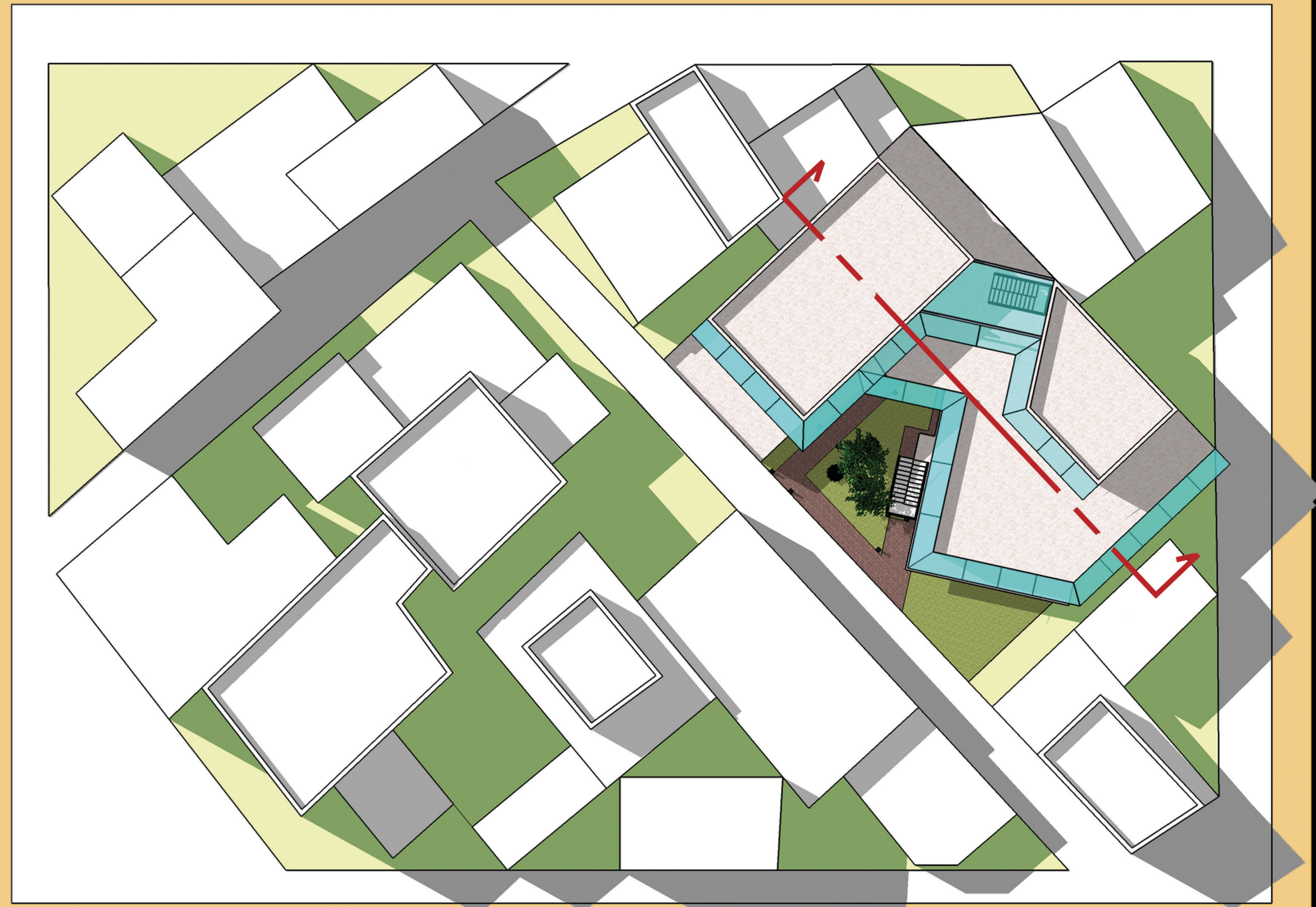
NIK ZULHAZMI BIN NIK FUAAD

Bachelor of Design (Architecture)

SID: 308133935

University of Sydney, Australia

entire site



AERIAL PLAN OF ENTIRE SITE (SCALE 1:200)

location

BLOCK H1

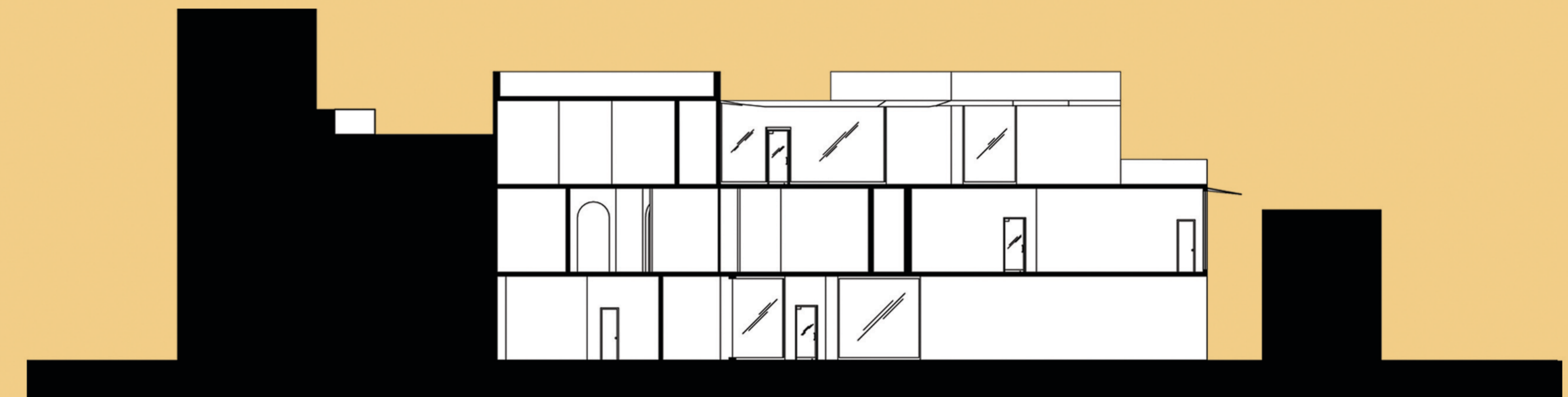


design

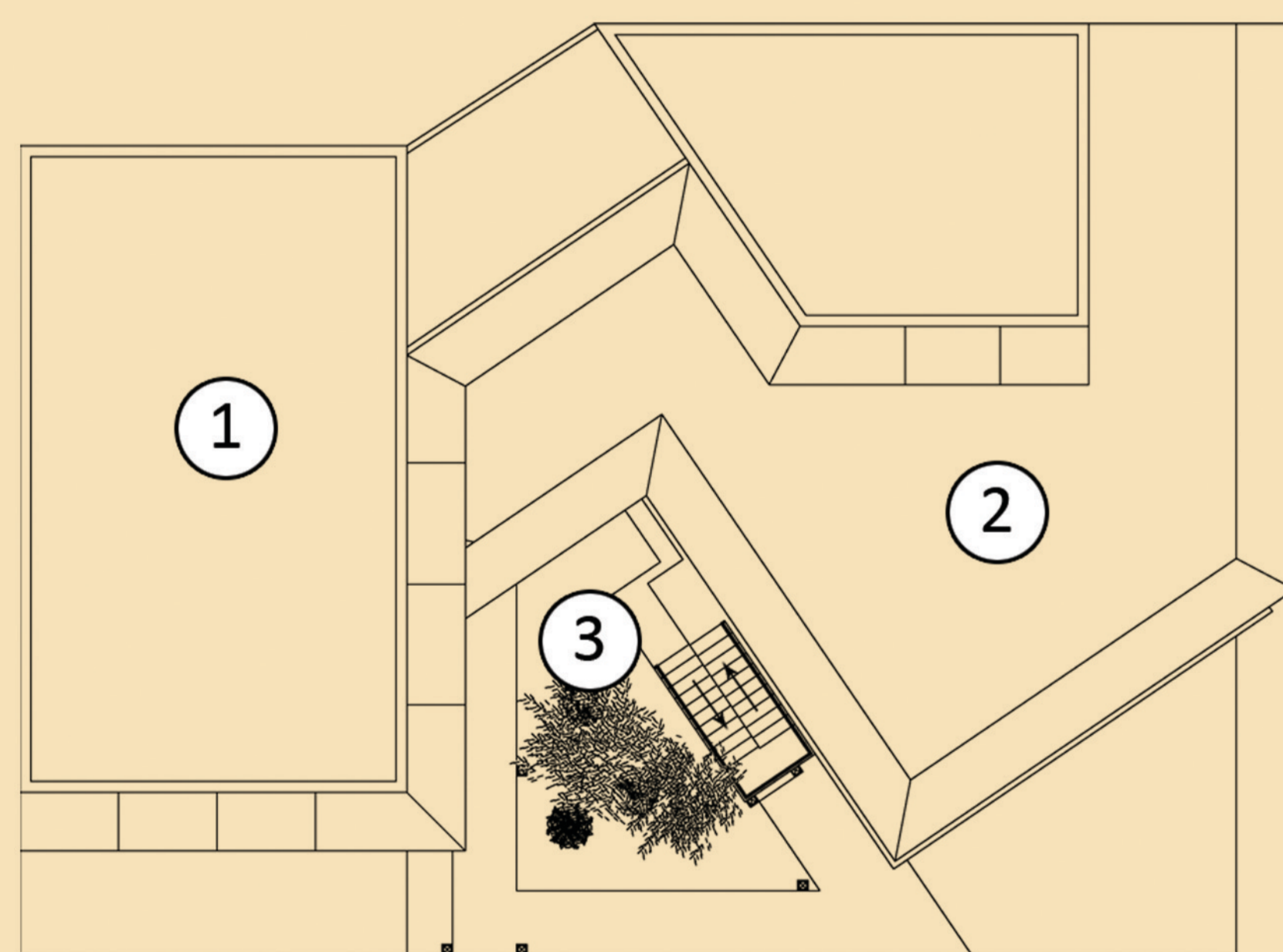
The proposed design is a multi-function building which accommodates a motorcycle workshop, café, multi-purpose hall and apartment houses in a single three-storey building. It is a multi-function motorcycle workshop with a café and serene apartments for temporary or permanent accommodation. The workshop offers motorcycle repair, services and maintenances as motorcycle is one of Jerusalem main transportation modes.



ELEVATION OF ENTIRE SITE (SCALE 1:200)

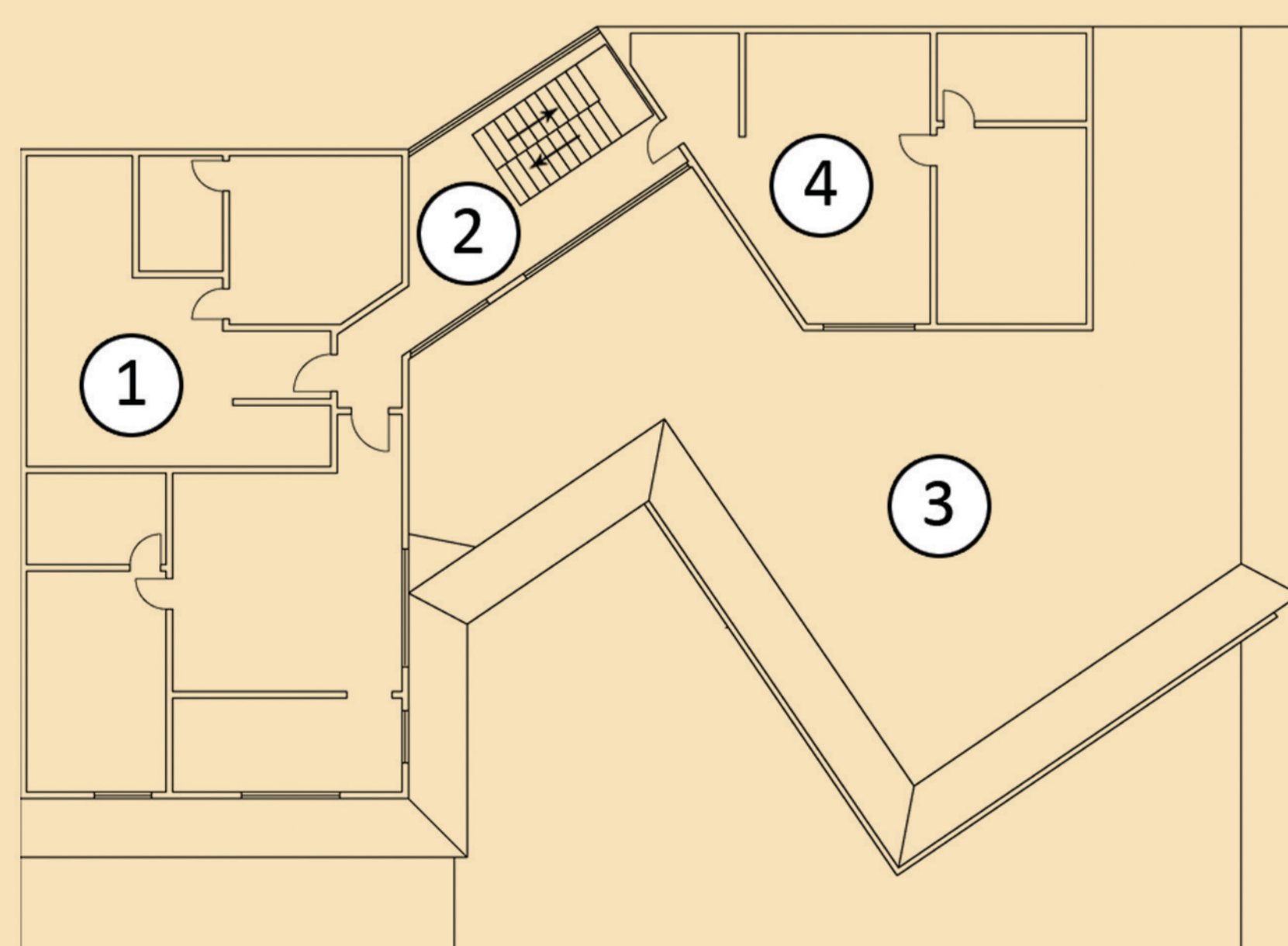


SECTION OF ENTIRE SITE (SCALE 1:200)



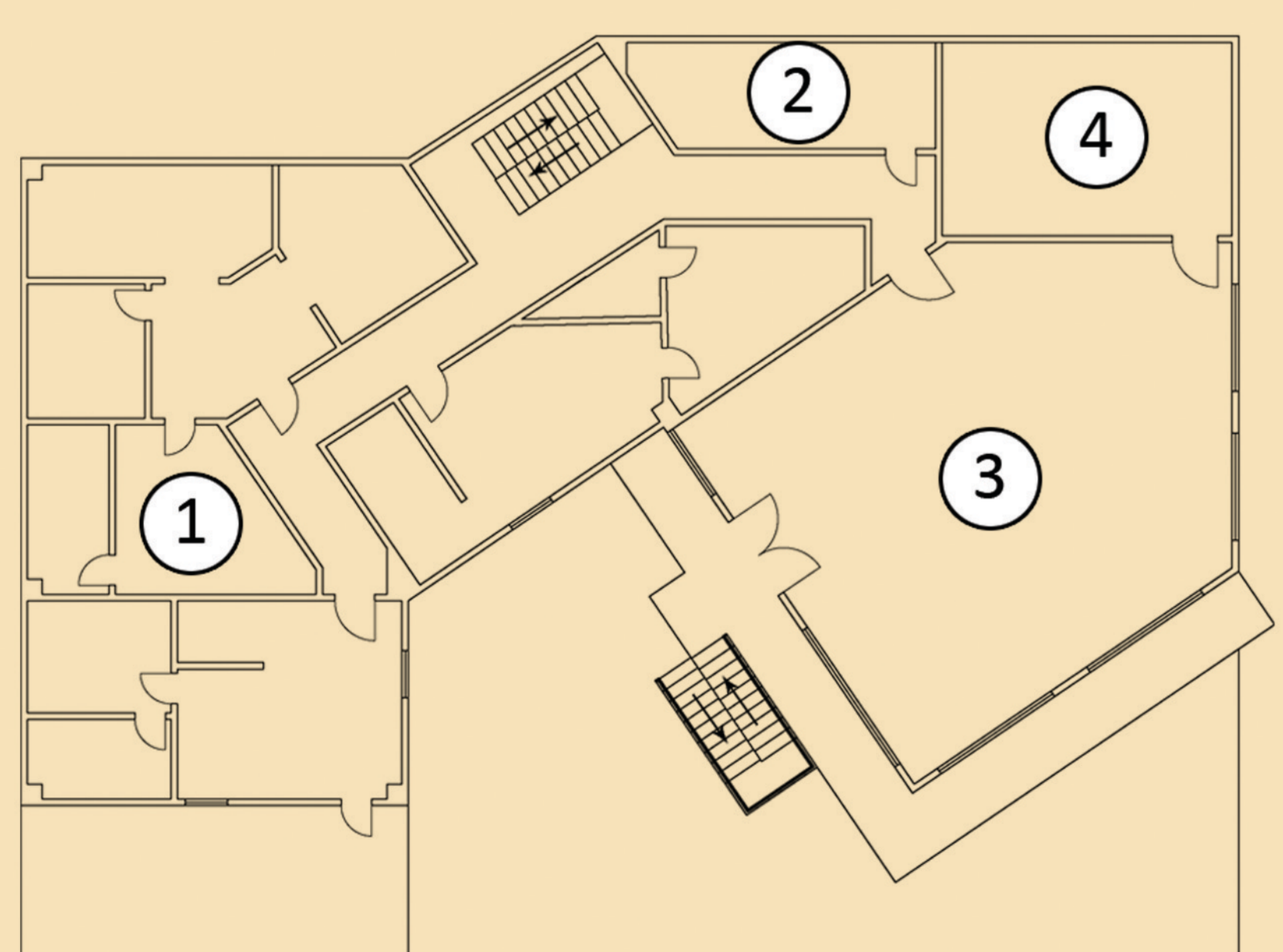
ROOF PLAN (SCALE 1:200)

- Legend:
- 1) Roof
 - 2) Verandah - 3rd floor
 - 3) Courtyard - ground



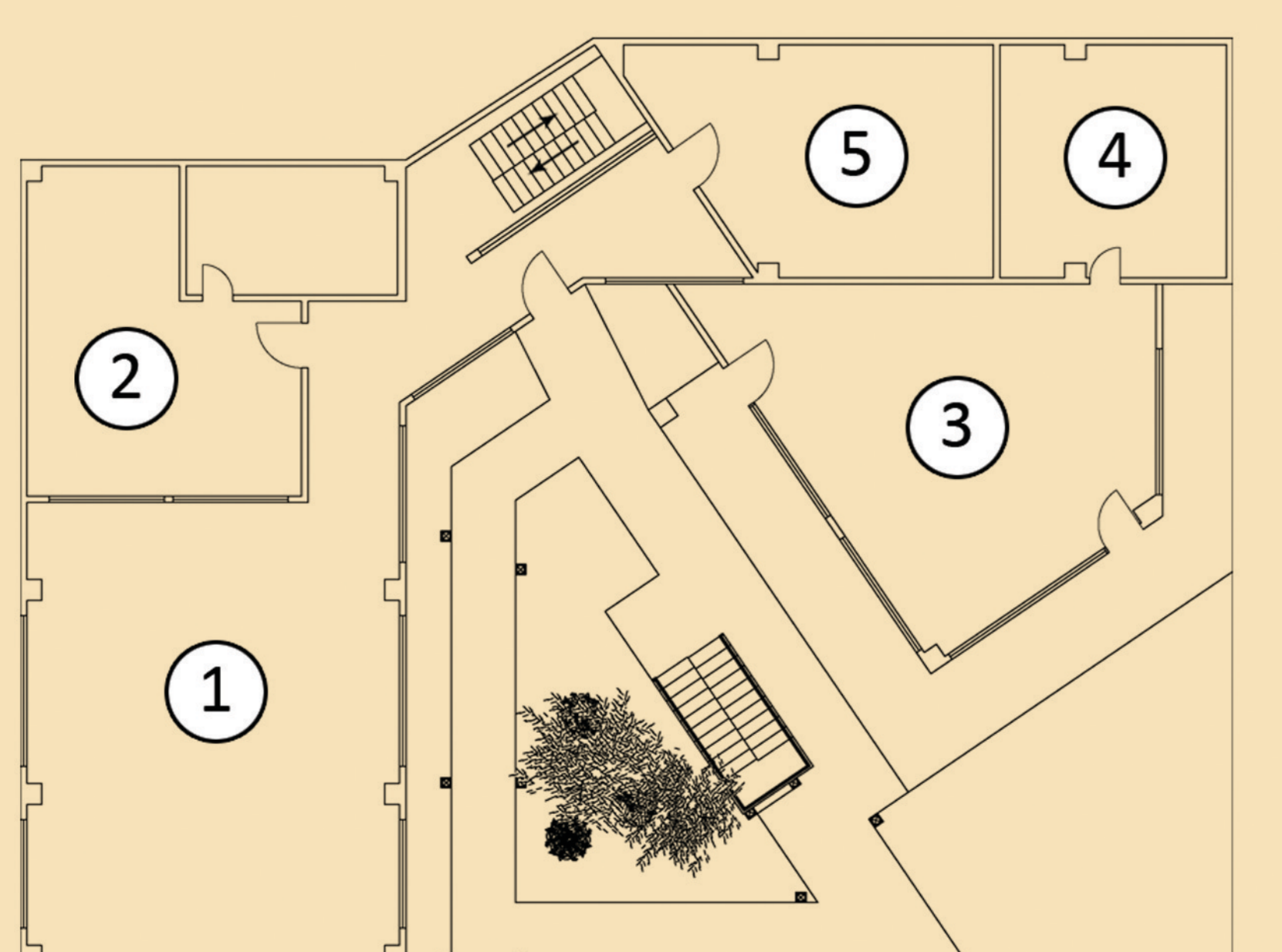
3RD FLOOR PLAN (SCALE 1:200)

- Legend:
- 1) Apartments
 - 2) Hallway
 - 3) Verandah
 - 4) Apartments



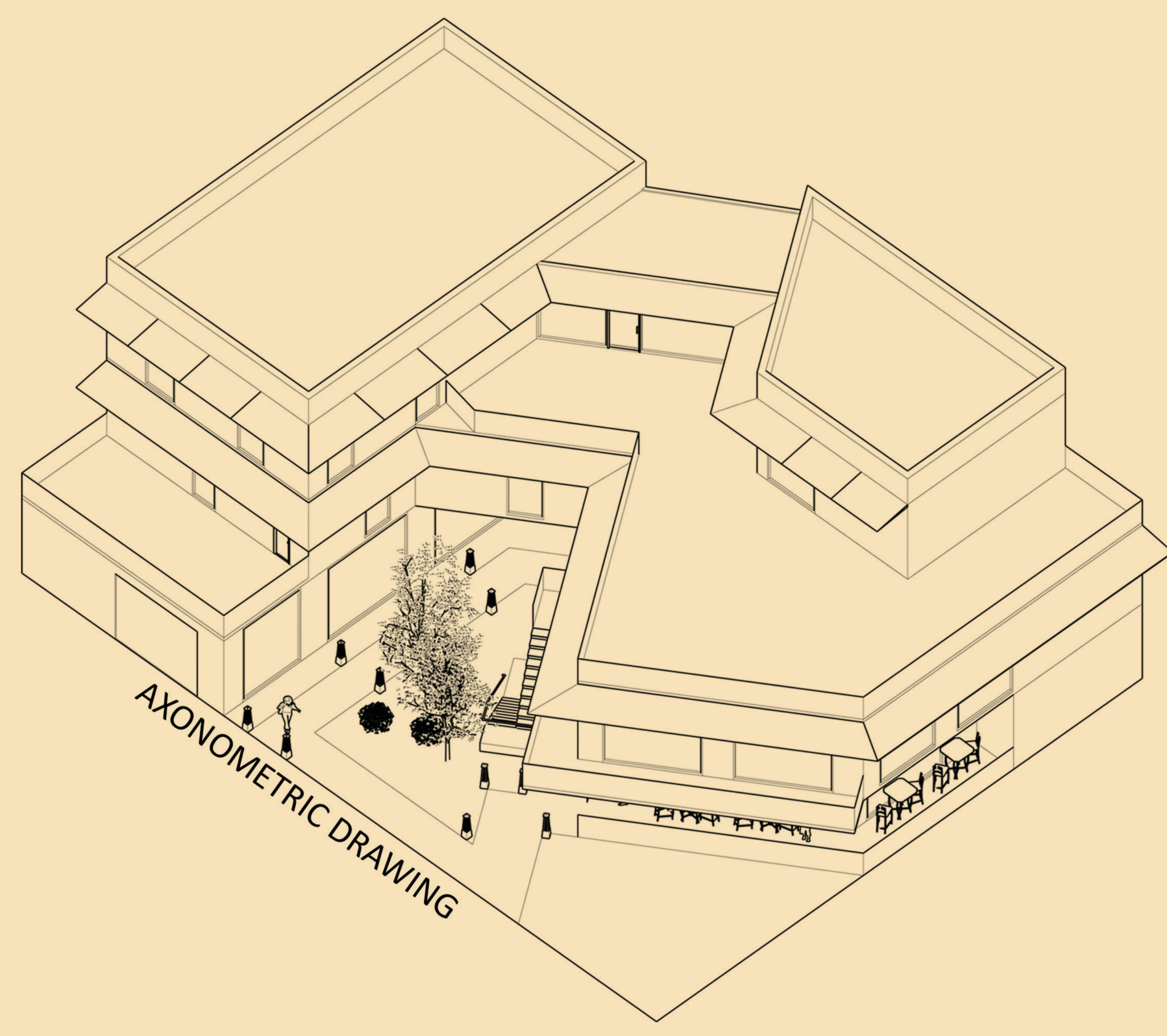
2ND FLOOR PLAN (SCALE 1:200)

- Legend:
- 1) Apartments
 - 2) Public toilets
 - 3) Multi-purpose hall
 - 4) Store room



1ST FLOOR PLAN (SCALE 1:200)

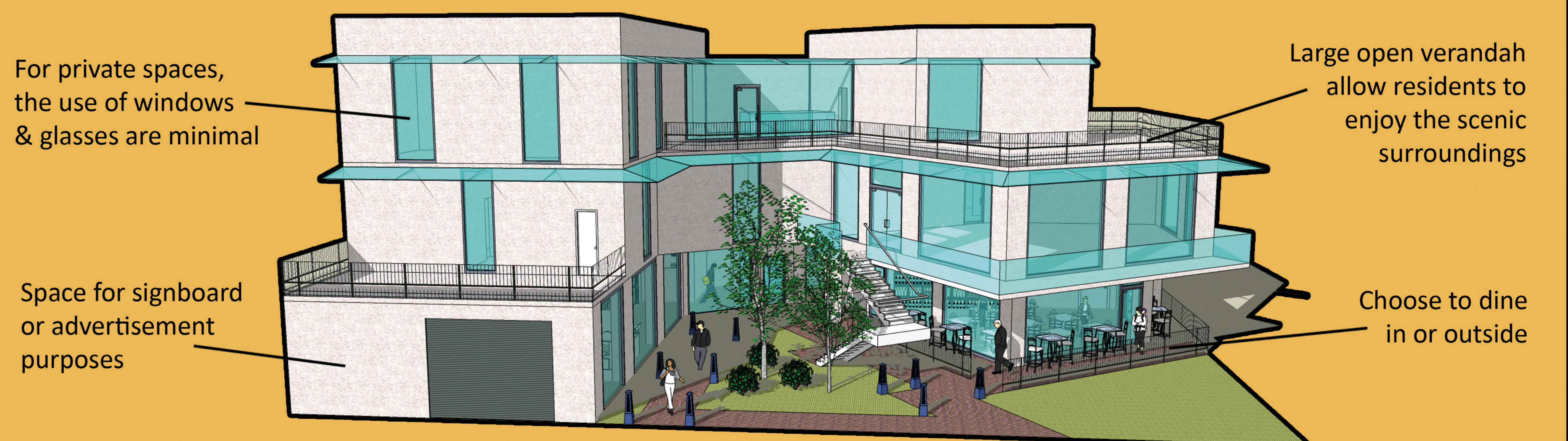
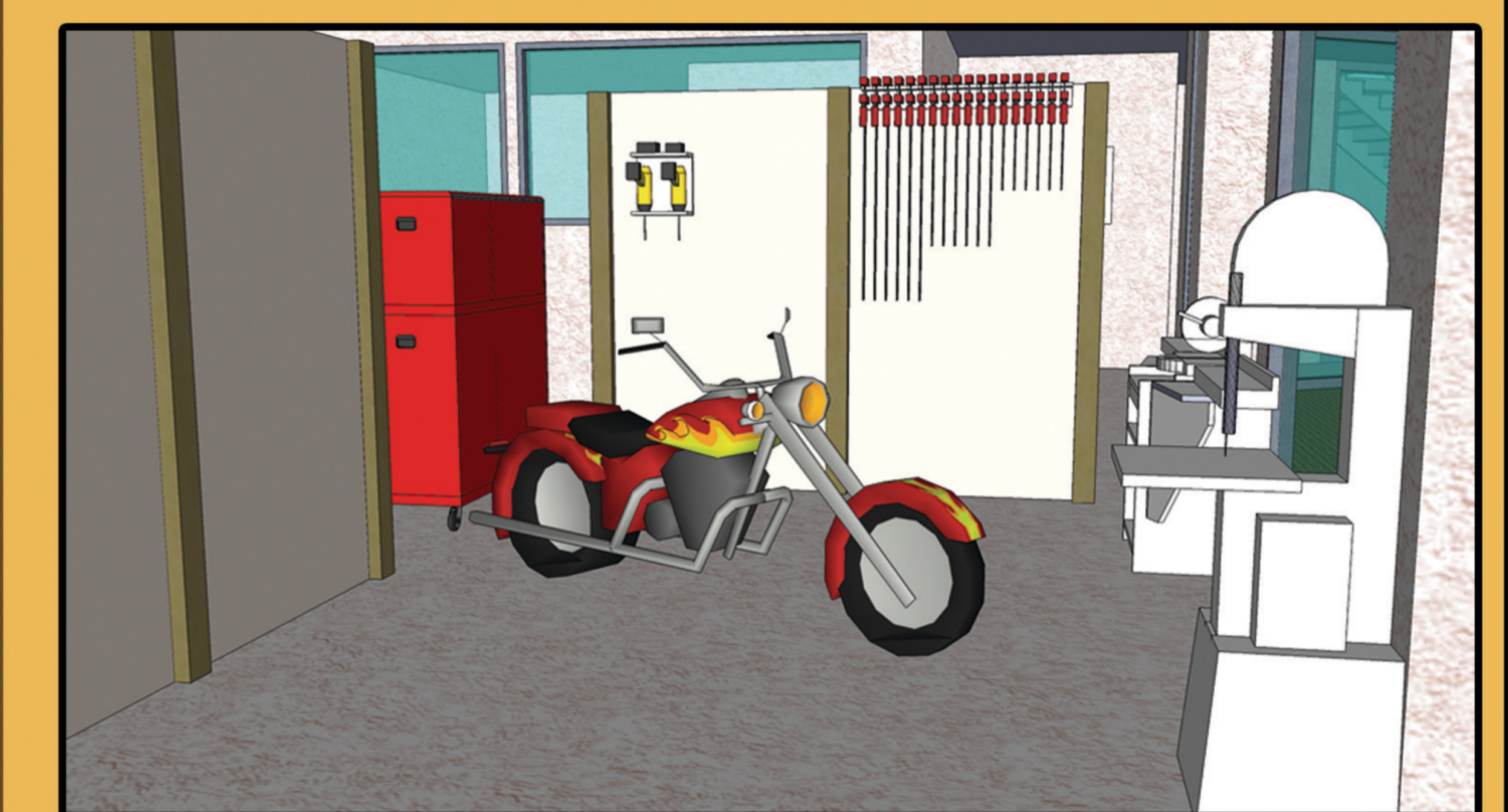
- Legend:
- 1) Workshop area
 - 2) Office & toilet
 - 3) Cafe area
 - 4) Kitchen
 - 5) Storage room



AXONOMETRIC DRAWING



A peak into the cafe and multi-purpose hall



For private spaces, the use of windows & glasses are minimal

Large open verandah allow residents to enjoy the scenic surroundings

Space for signboard or advertisement purposes

Choose to dine in or outside



This is the view of the main entrance to the building. The heavy use of glass as part of the building's cladding enables the public to see what's actually going on inside of the building.