

info

produced by:

NIK ZULHAZMI BIN NIK FUAAD

Bachelor of Design (Architecture)

SID: 308133935

University of Sydney, Australia

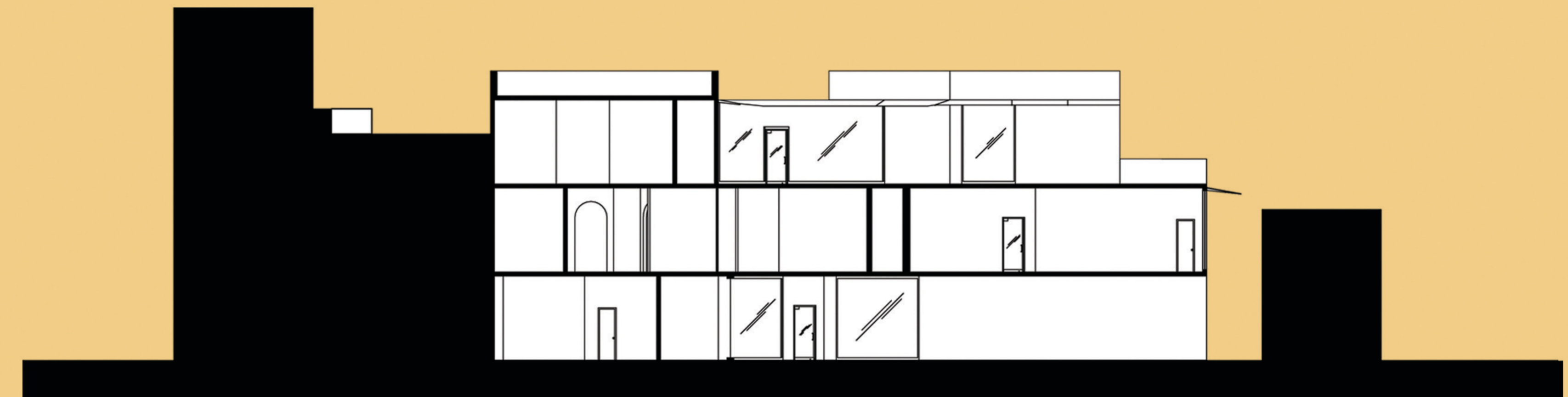
entire site



AERIAL PLAN OF ENTIRE SITE (SCALE 1:200)



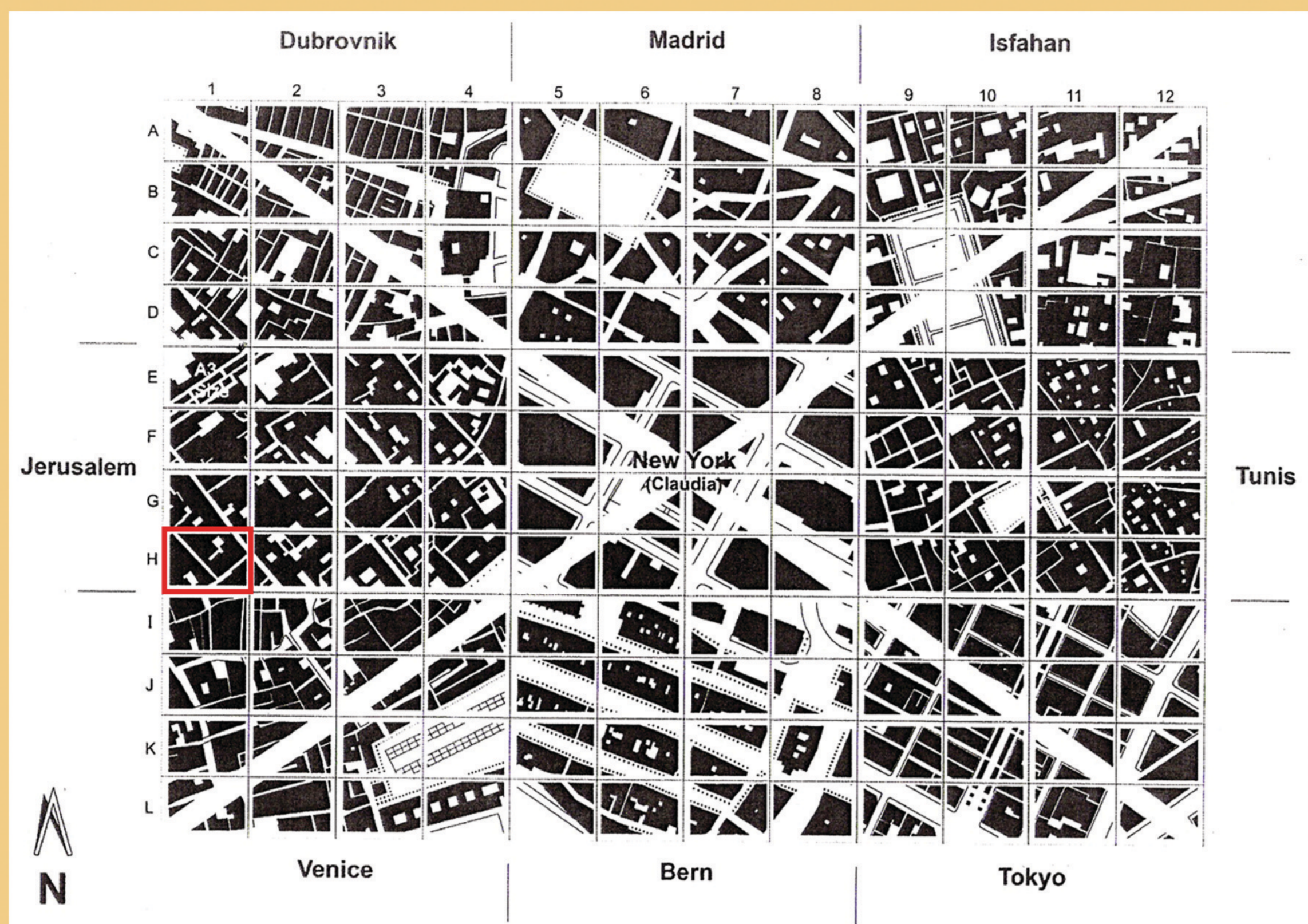
ELEVATION OF ENTIRE SITE (SCALE 1:200)



SECTION OF ENTIRE SITE (SCALE 1:200)

location

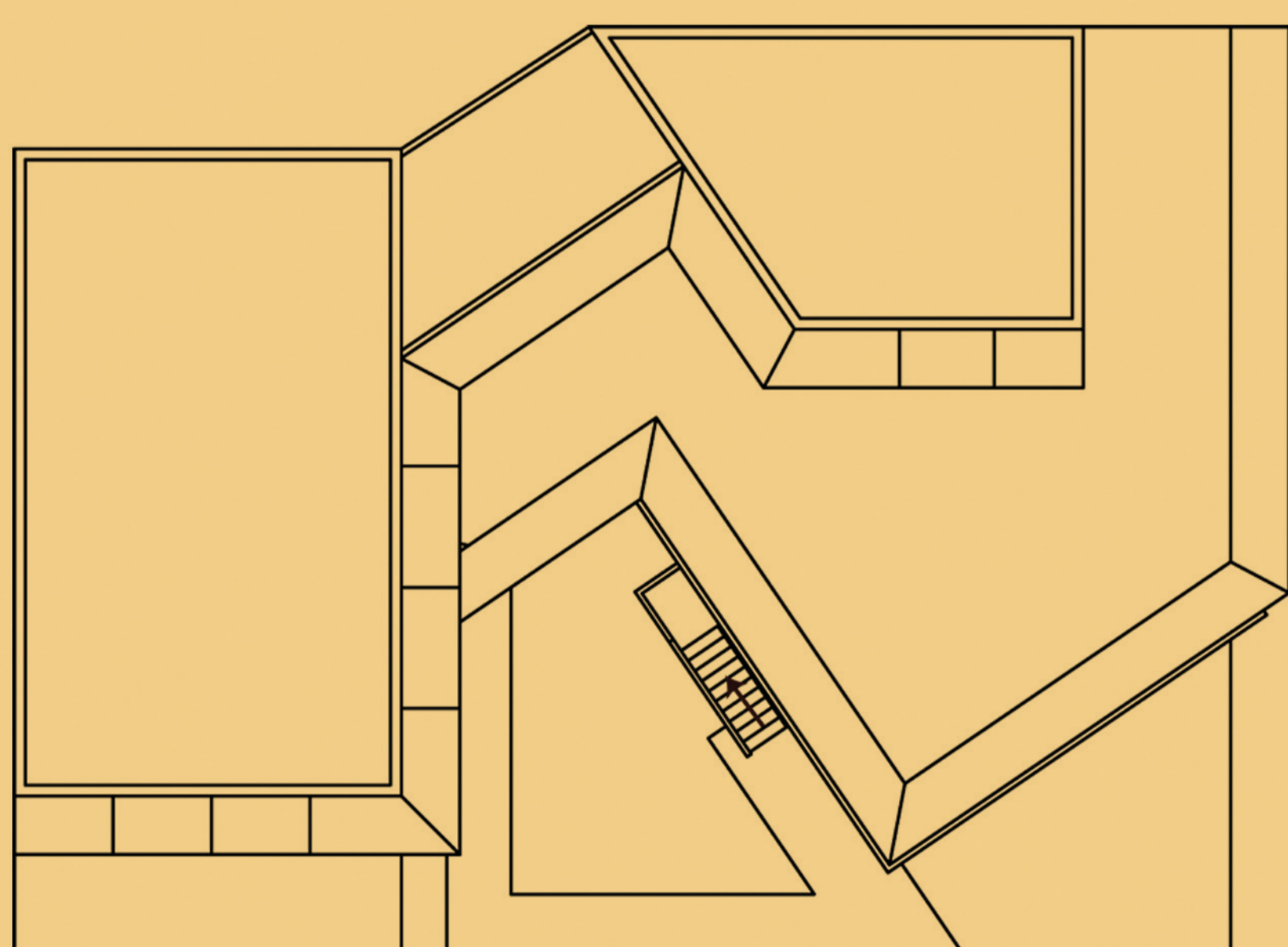
BLOCK H1



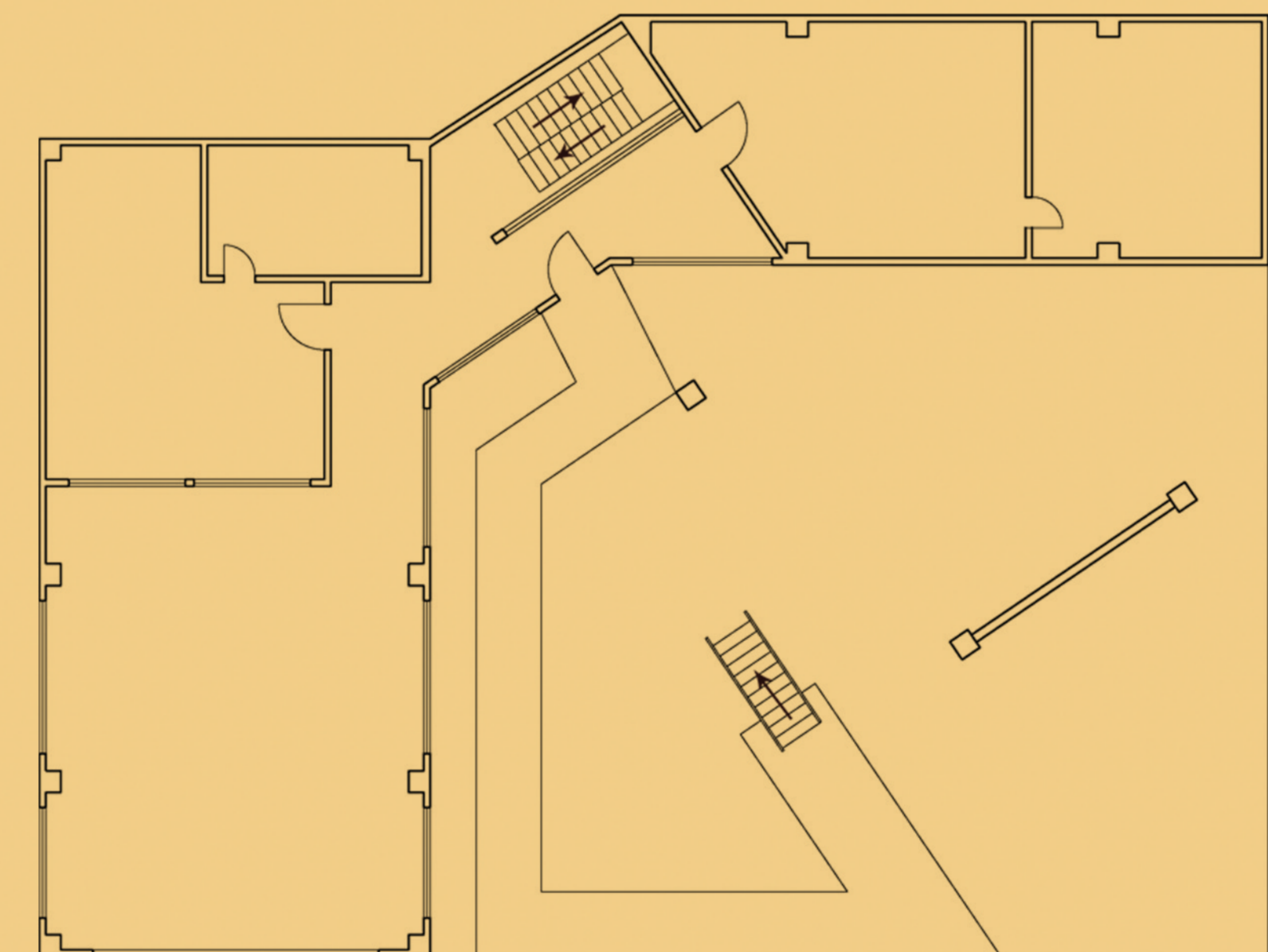
design

The proposed design is a multi-function building which accommodates a motorcycle workshop, café and apartments in a single three-storey building. It is a multi-function motorcycle workshop with a café and serene apartments for temporary or permanent accommodation. The workshop offers motorcycle repair, services and maintenances as motorcycle is one of Jerusalem main transportation modes.

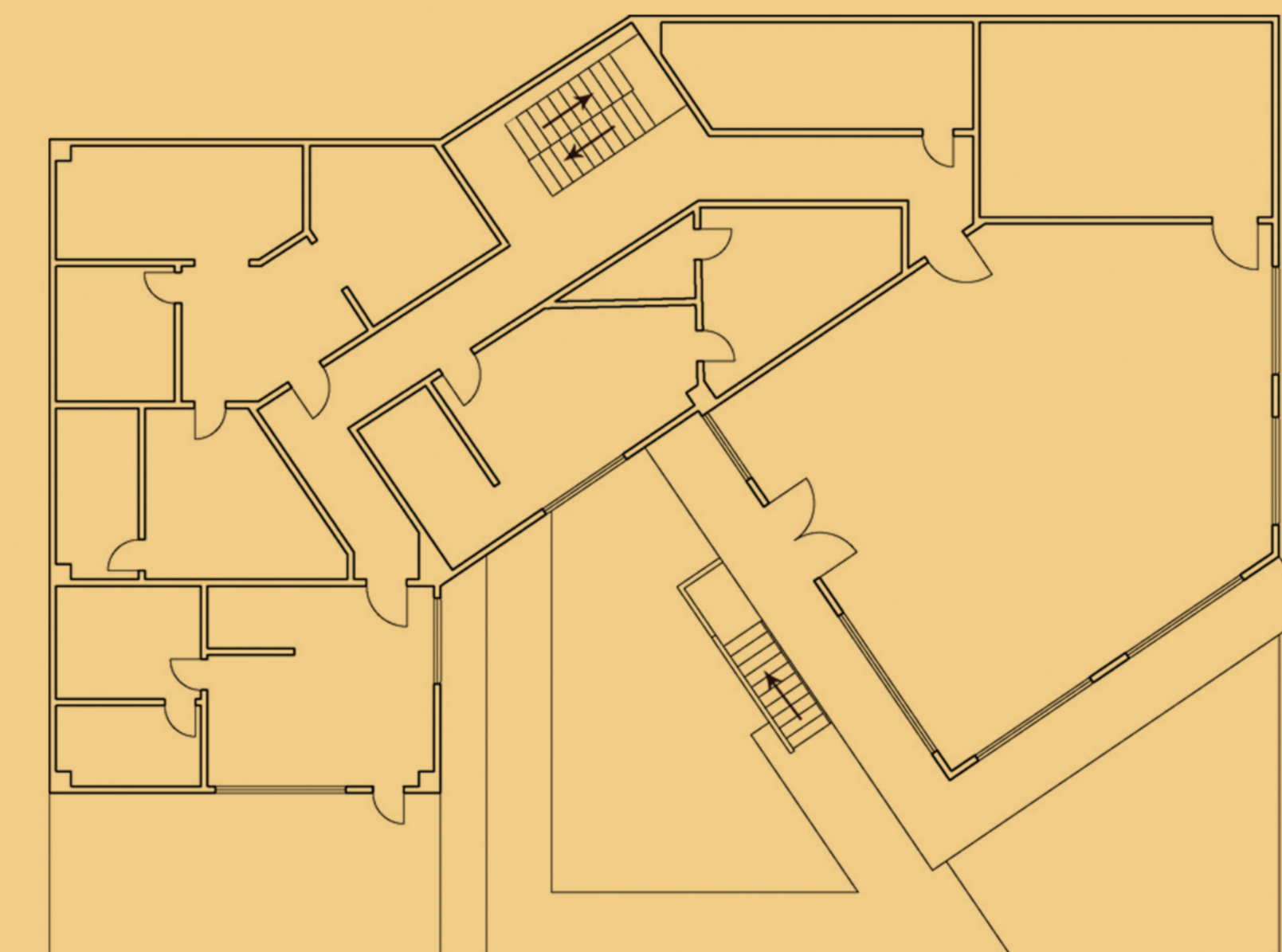
building drawings



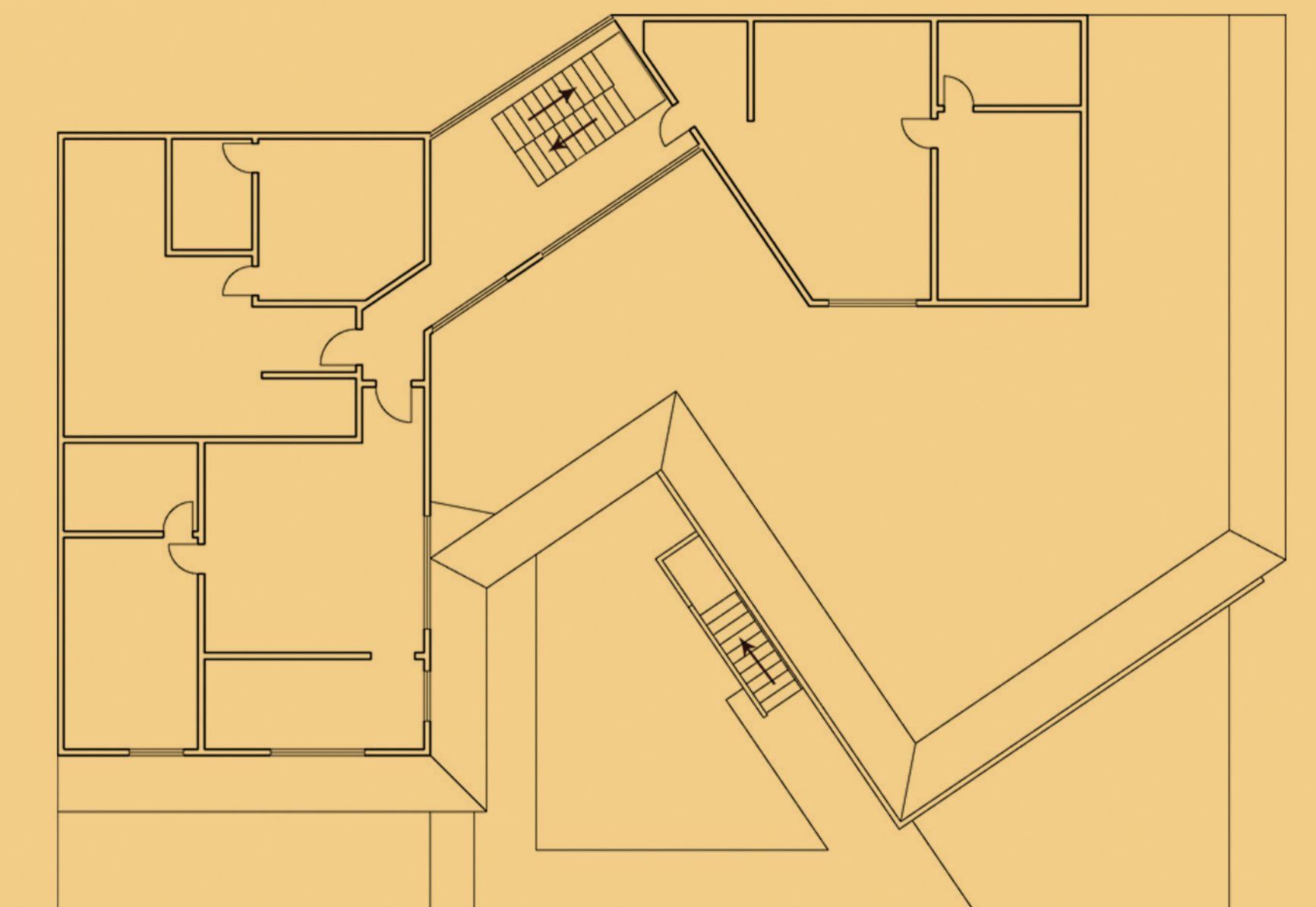
ROOF PLAN (SCALE 1:200)



1st FLOOR PLAN (SCALE 1:200)

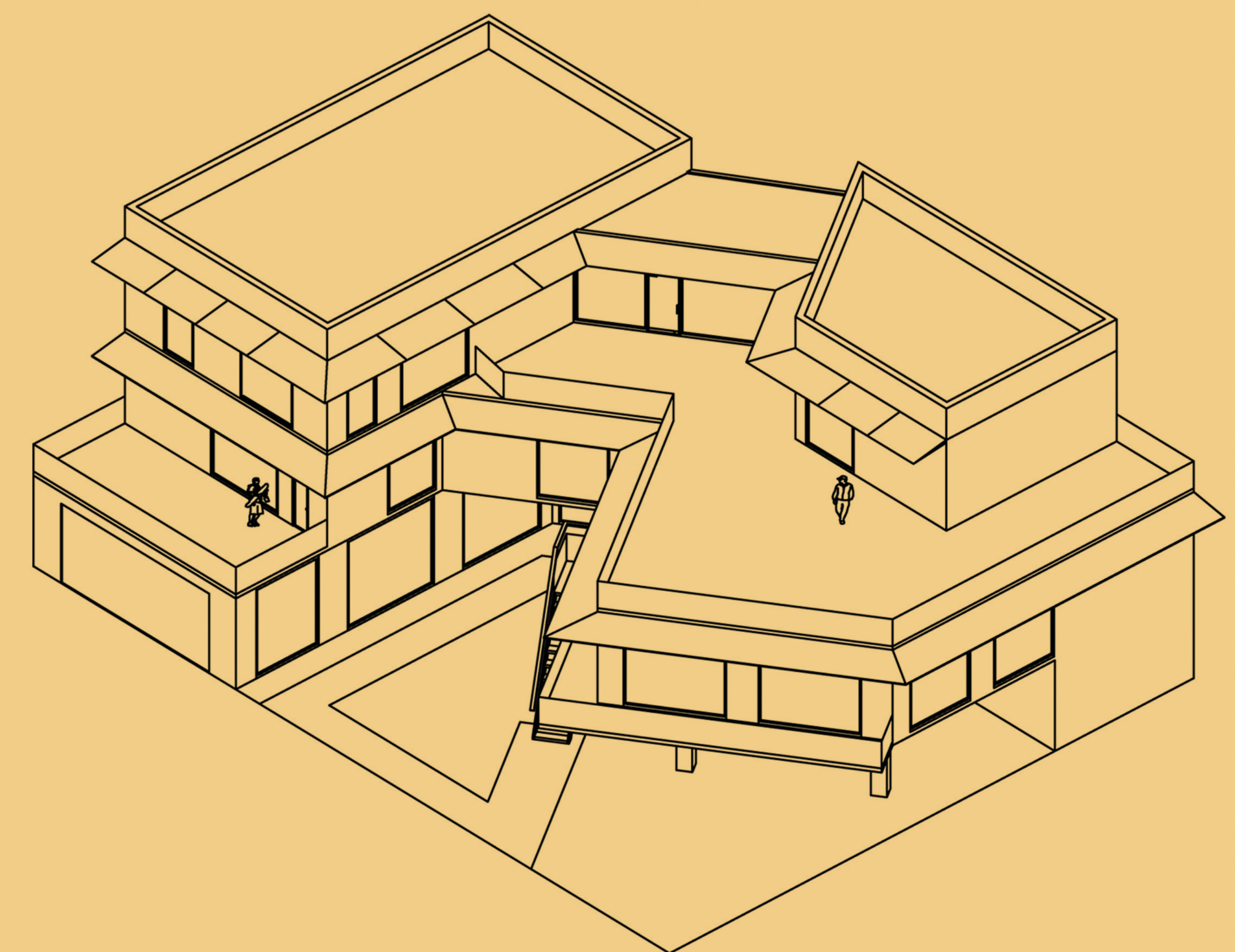
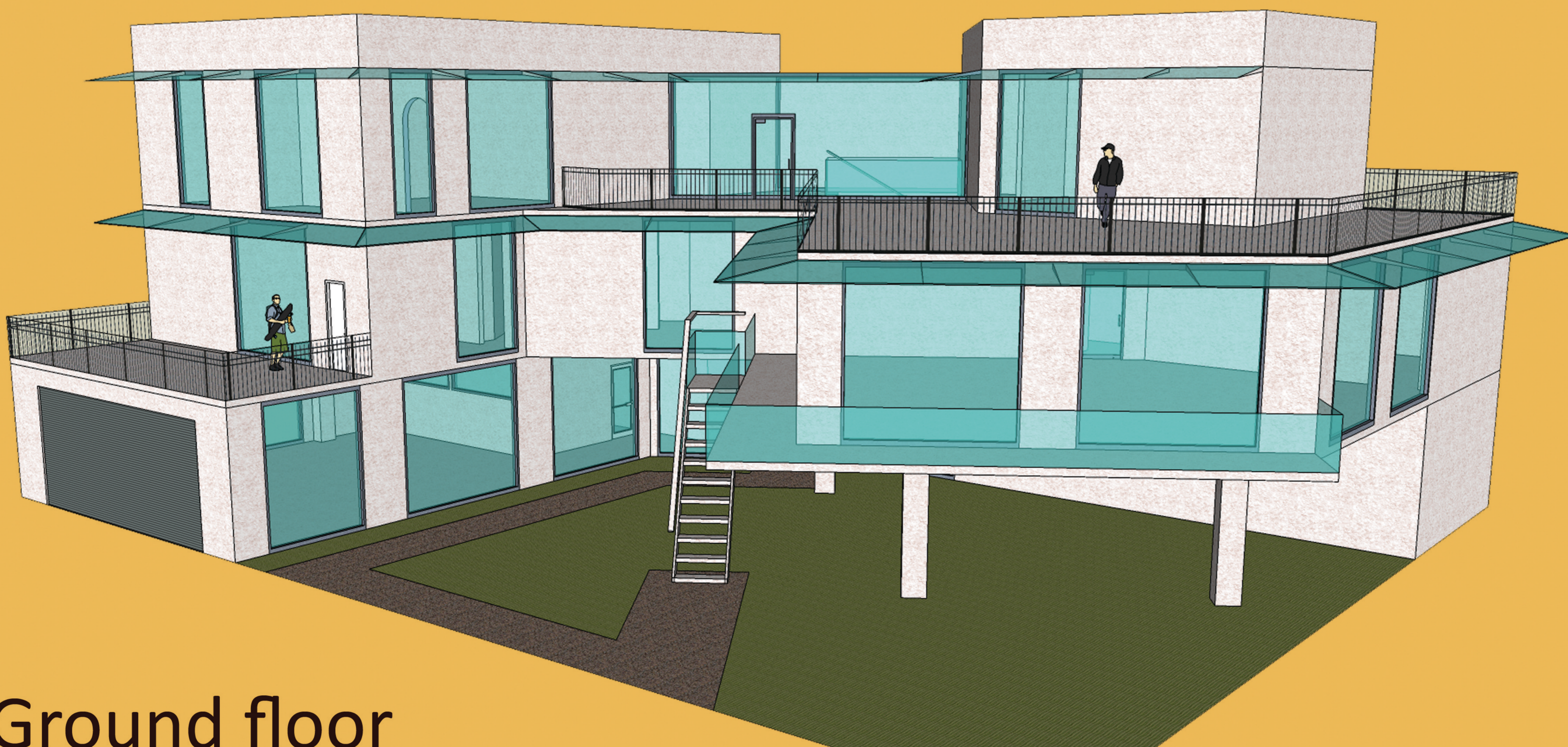


2nd FLOOR PLAN (SCALE 1:200)



3rd FLOOR PLAN (SCALE 1:200)

3D PERSPECTIVE VIEW



AXONOMETRIC (SCALE 1:200)

Ground floor

- workshop & garage

2nd Floor

- apartment house, cafe, kitchen

3rd Floor

- apartment house, verandah

