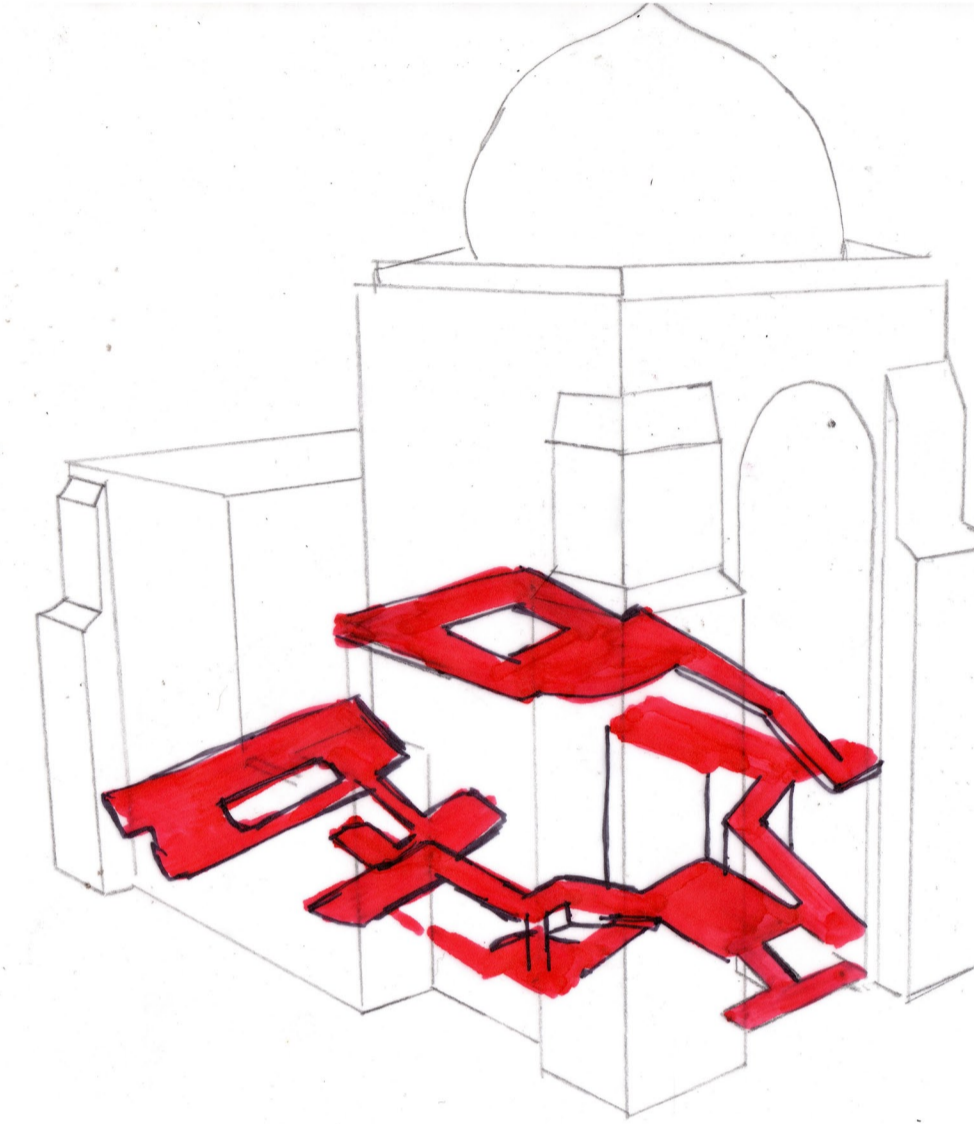
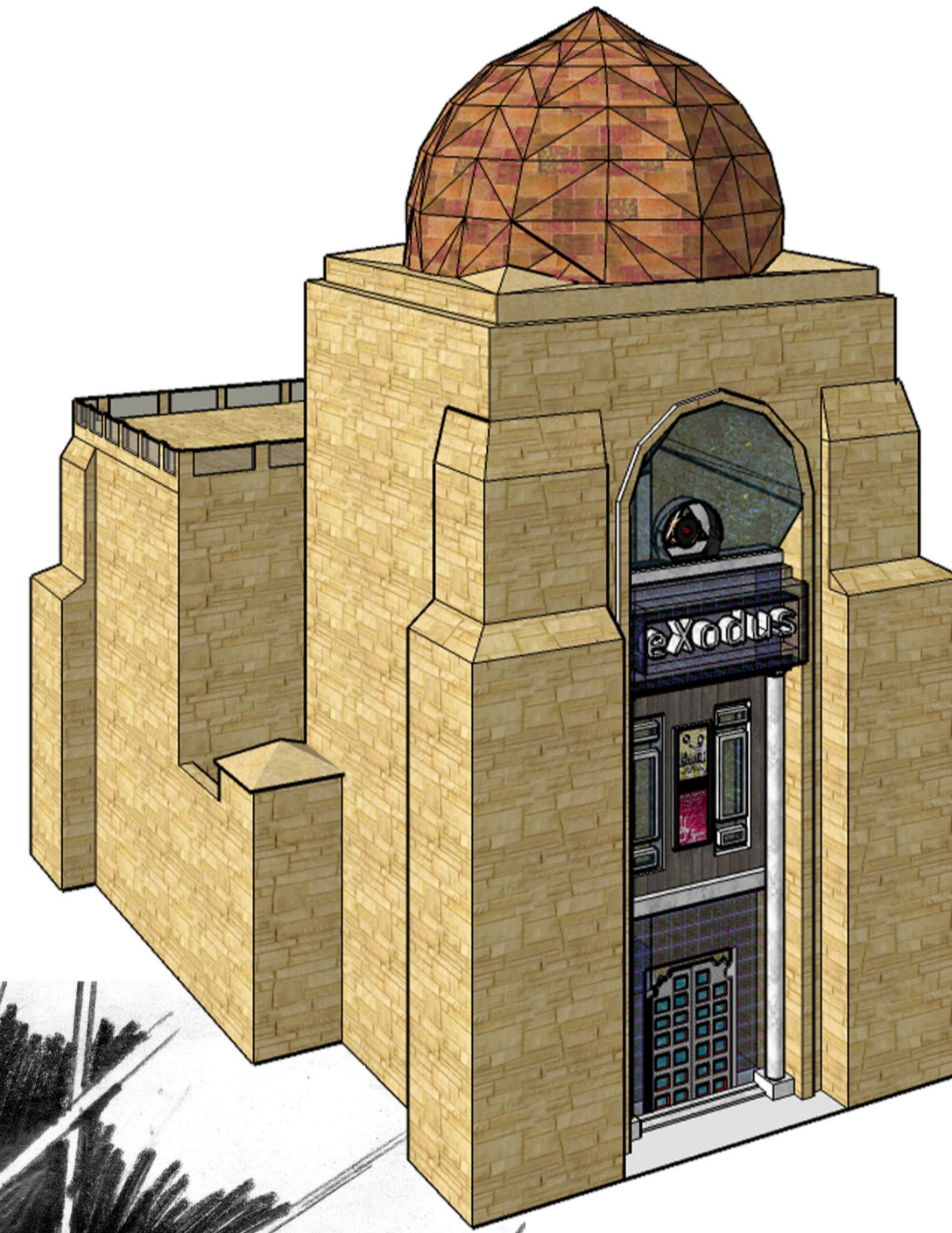




below shows the exterior of the building drawn and textured as well as the internal view in the bottom right hand corner of the inner belltower, which is to hold the DJ as well as the bar and transmit music throughout the club. The belltower will be equipped with lasers to intensify the rave scene.



one of the major difficulties for me in this project was conveying movement through my building because of its split levels and varying paths, The main sections can be broken into lower drinking areas and bar areas, main entrance, side corridors to provide access to raised dance floors and the upper level for fresh air and the function room.

