

Aerial Plan



A 2



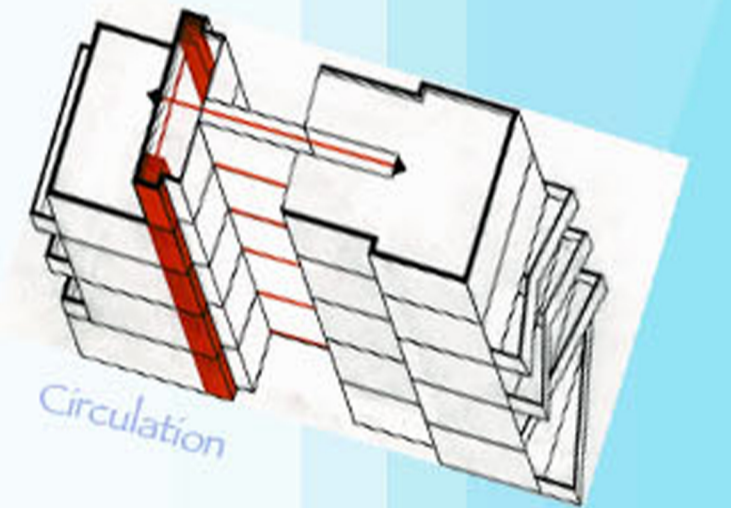
SITE PLAN 1:10 000

*My main concept is Straight lines. Incorporating the urban context of Dubrovniks layout of straight rows of buildings and columns into my design, my Hotel.*



*The Dubrovnik lifestyle of sunbathing by the coast, soaking the sunrays, is incorporated in my design. The pool is located on the roof, open space. The courtyard, has breezy palm trees shooting upwards, integrating environment within the hotel.*

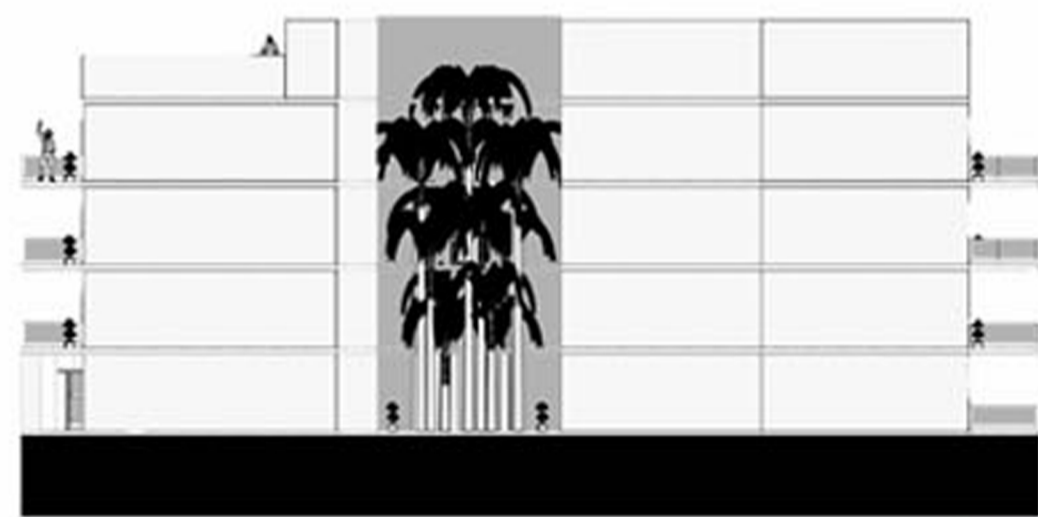
*This hotel is a homey, service apartment. Suites include a kitchen, living & dining room, bedroom, toilet and a private balcony. One way reflection glasses are used for privacy, while allowing maximum sunlight in. The rest of the hotel is made up of Stone (limestone).*



Circulation



Long Elevation

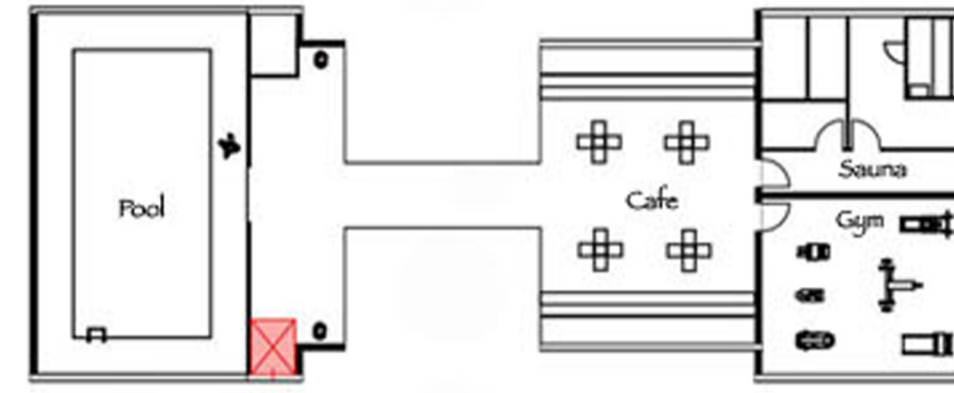


Short Elevation

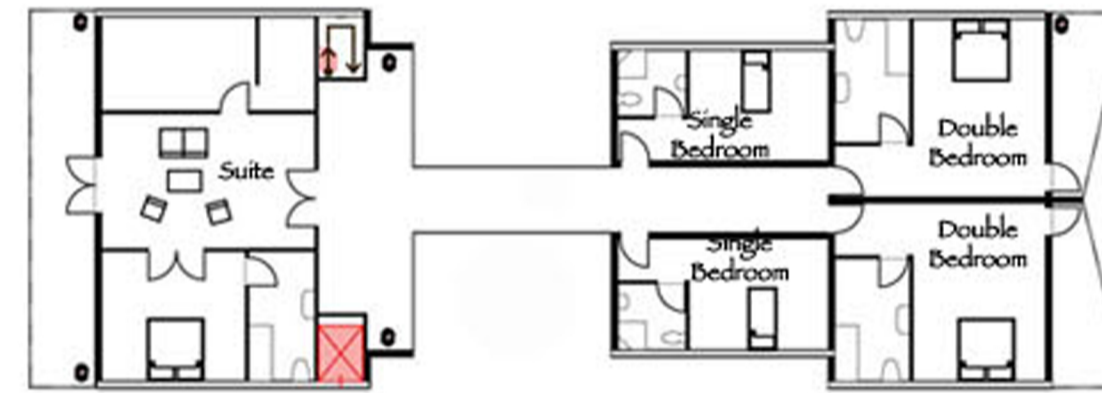


Section

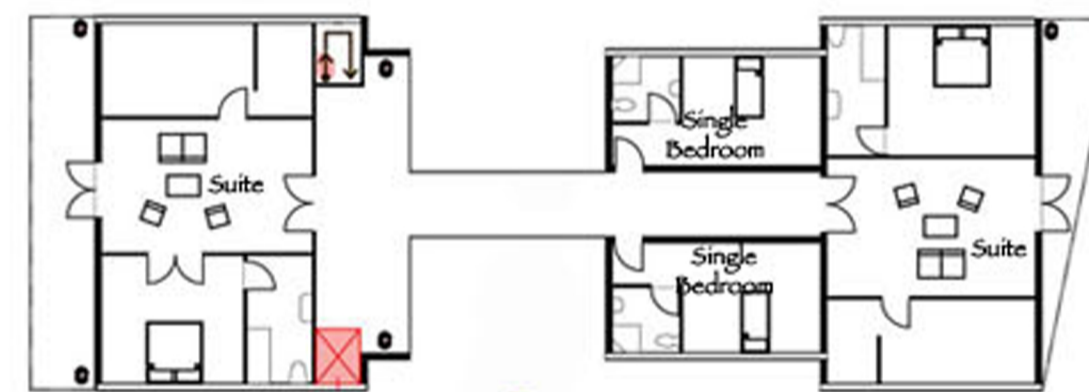
PLANS



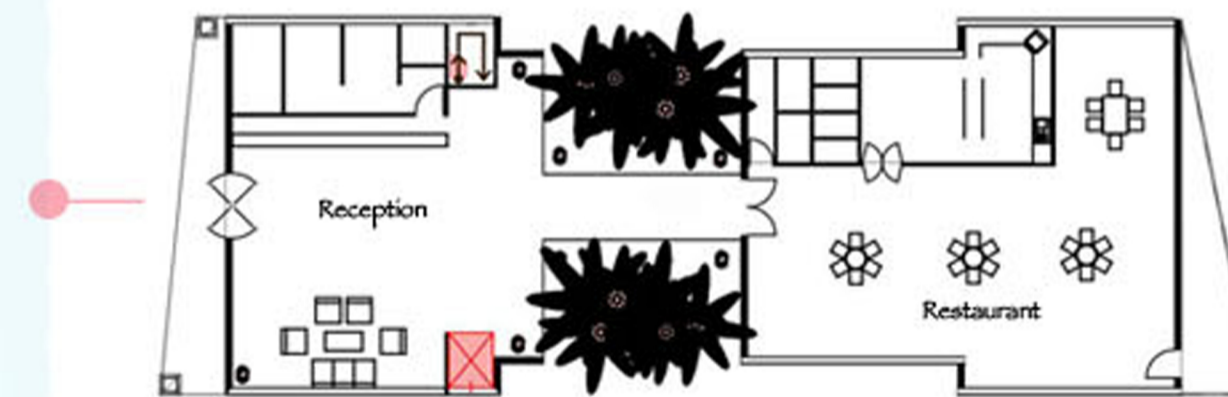
Rooftop



2nd & 3rd floor



1st floor



Lobby floor

[Scale 1:200]

Key:  
● Entry to building



Axonometric

*Dubrovnik*

- Michelle Foo, 308236815

[Hotel]

A 2