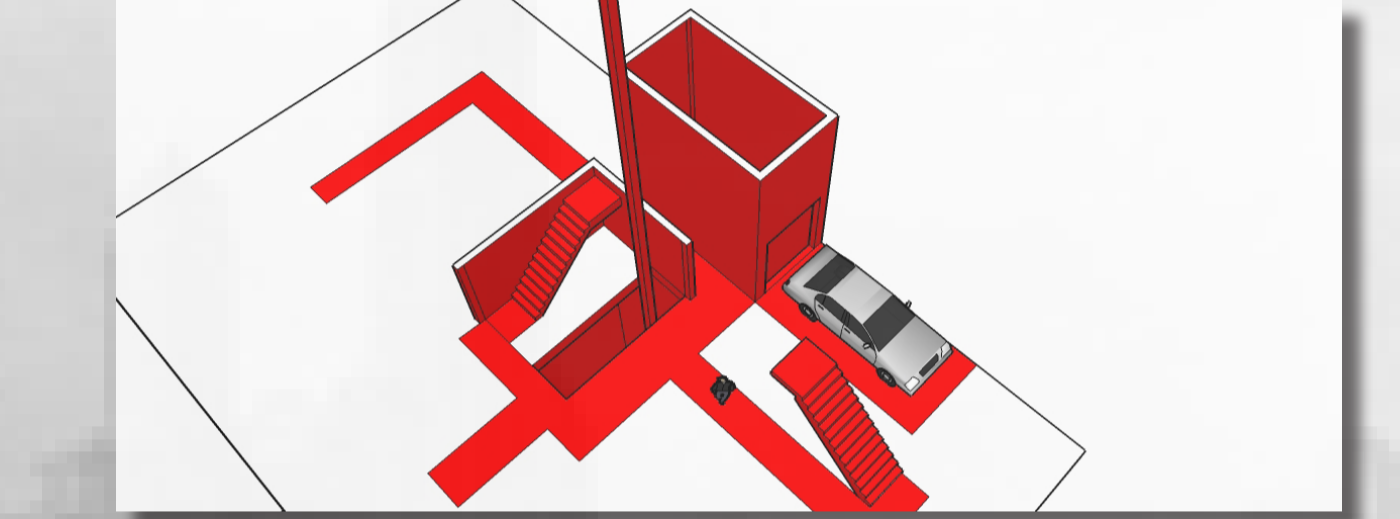
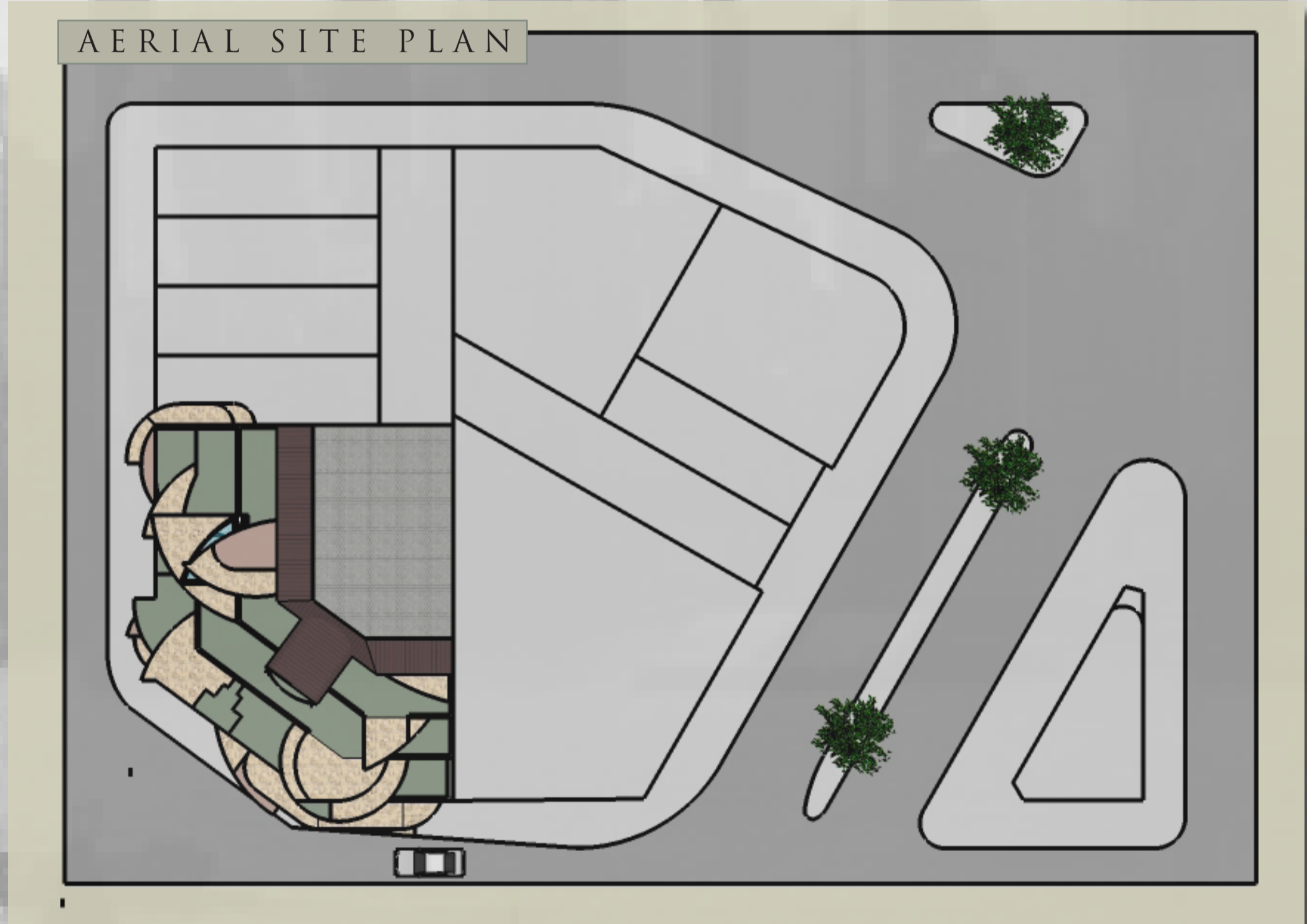
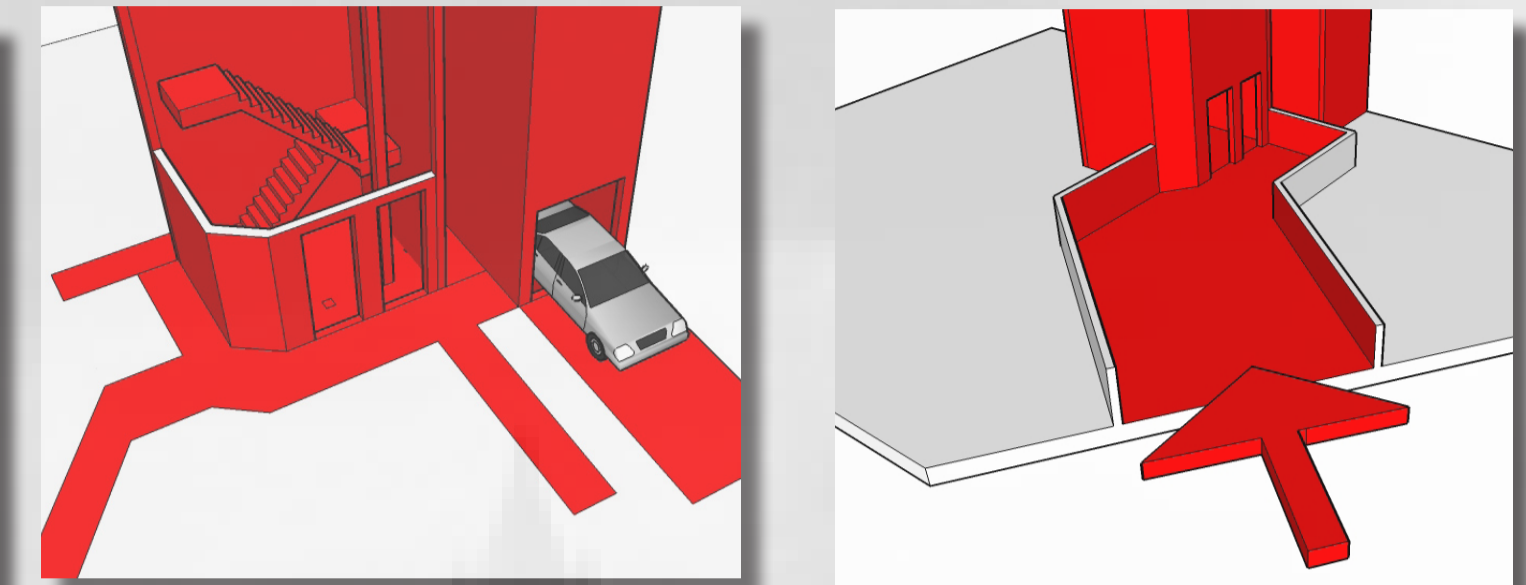
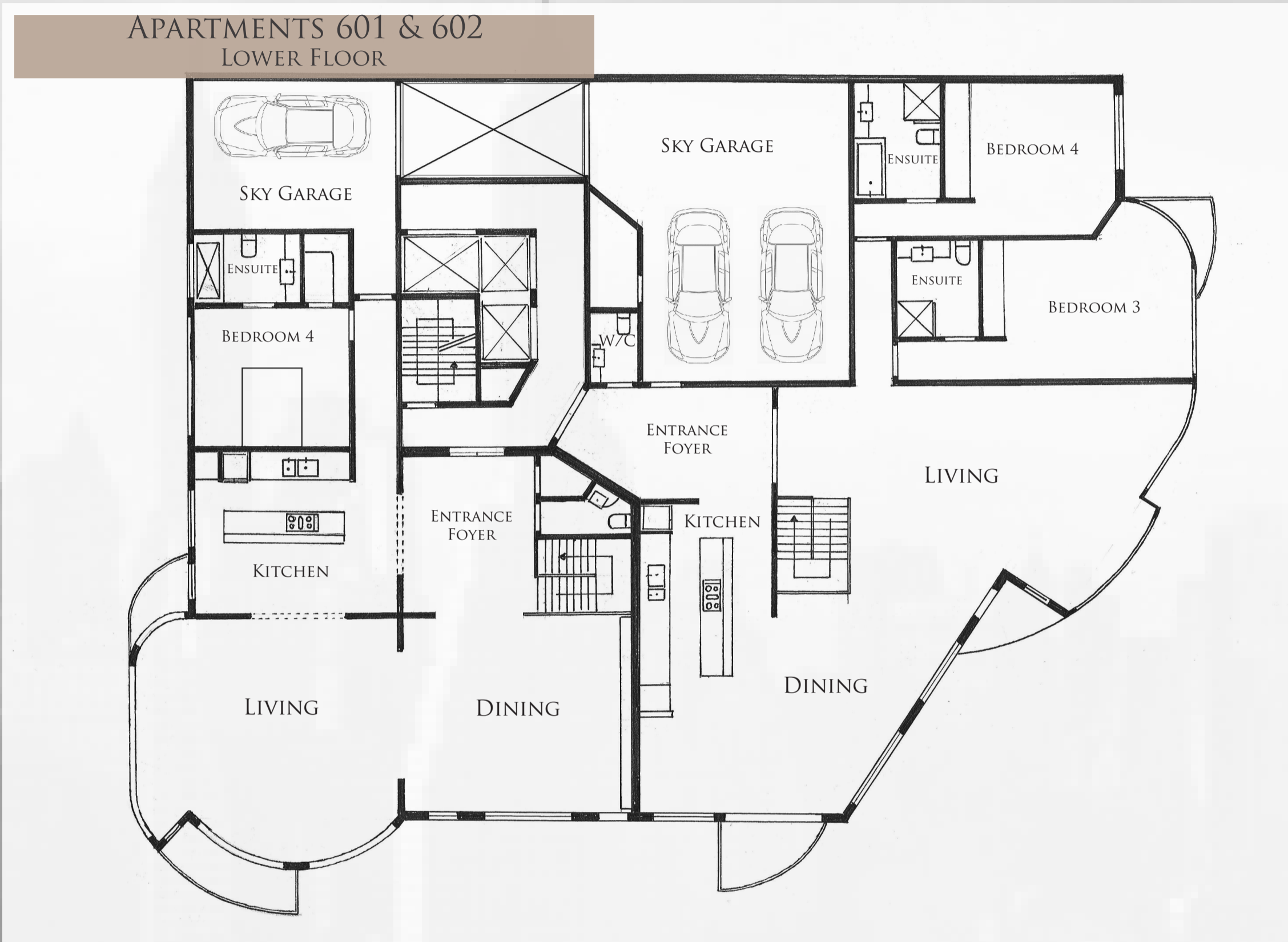
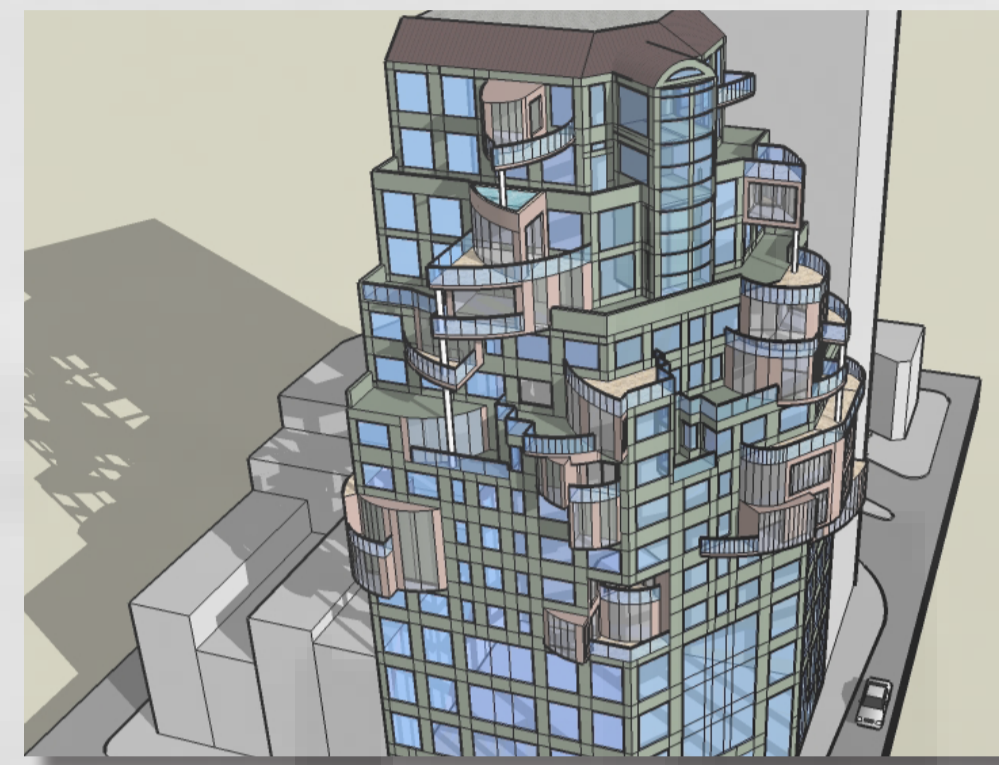
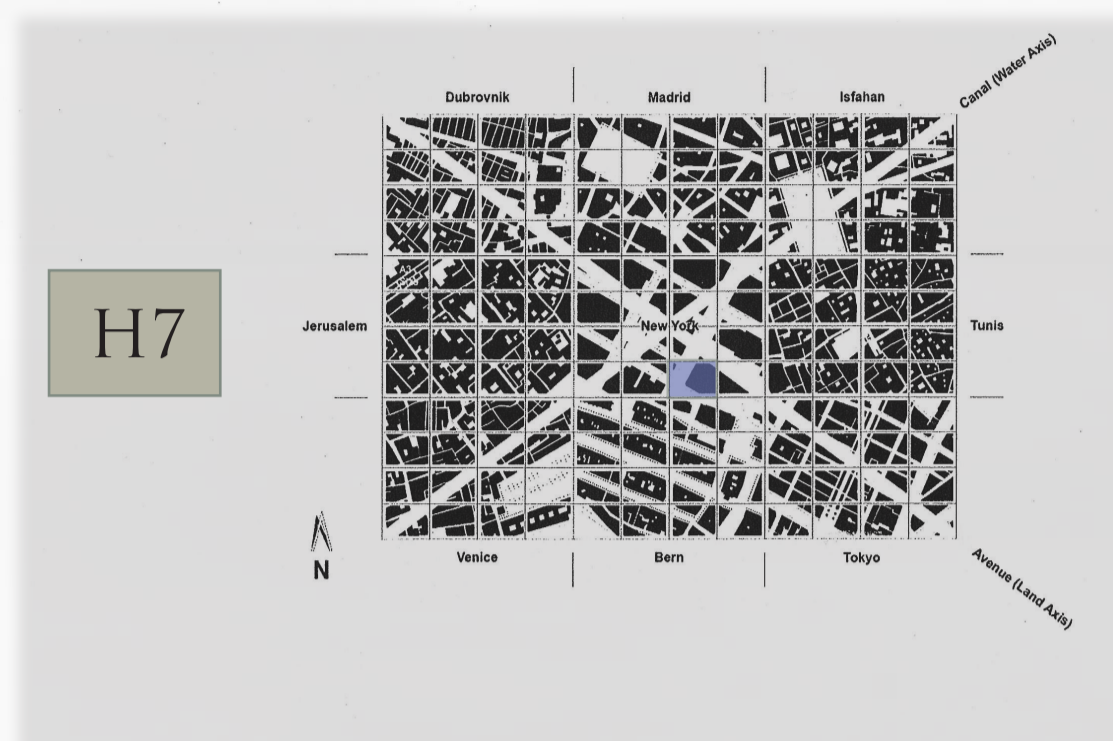
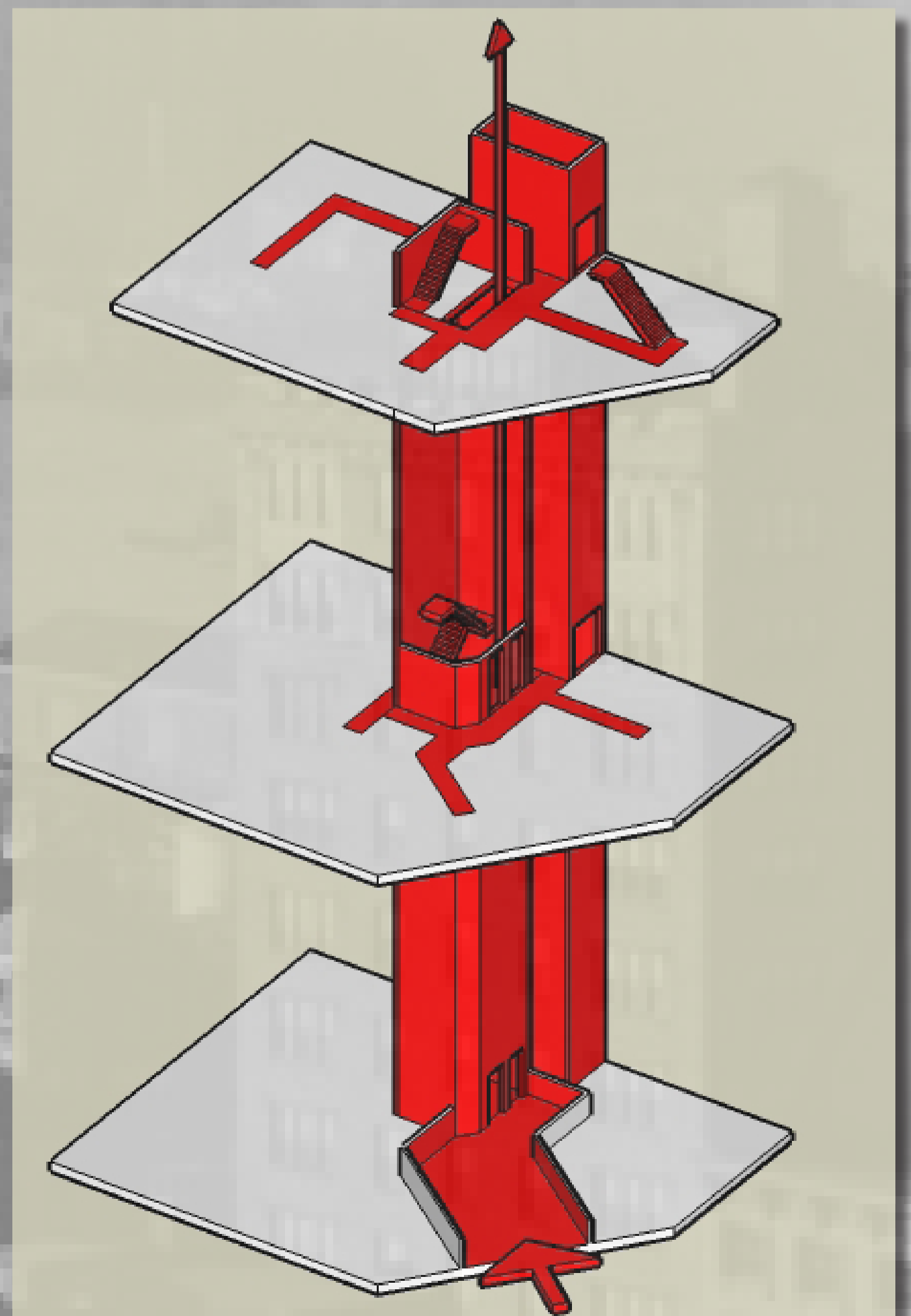
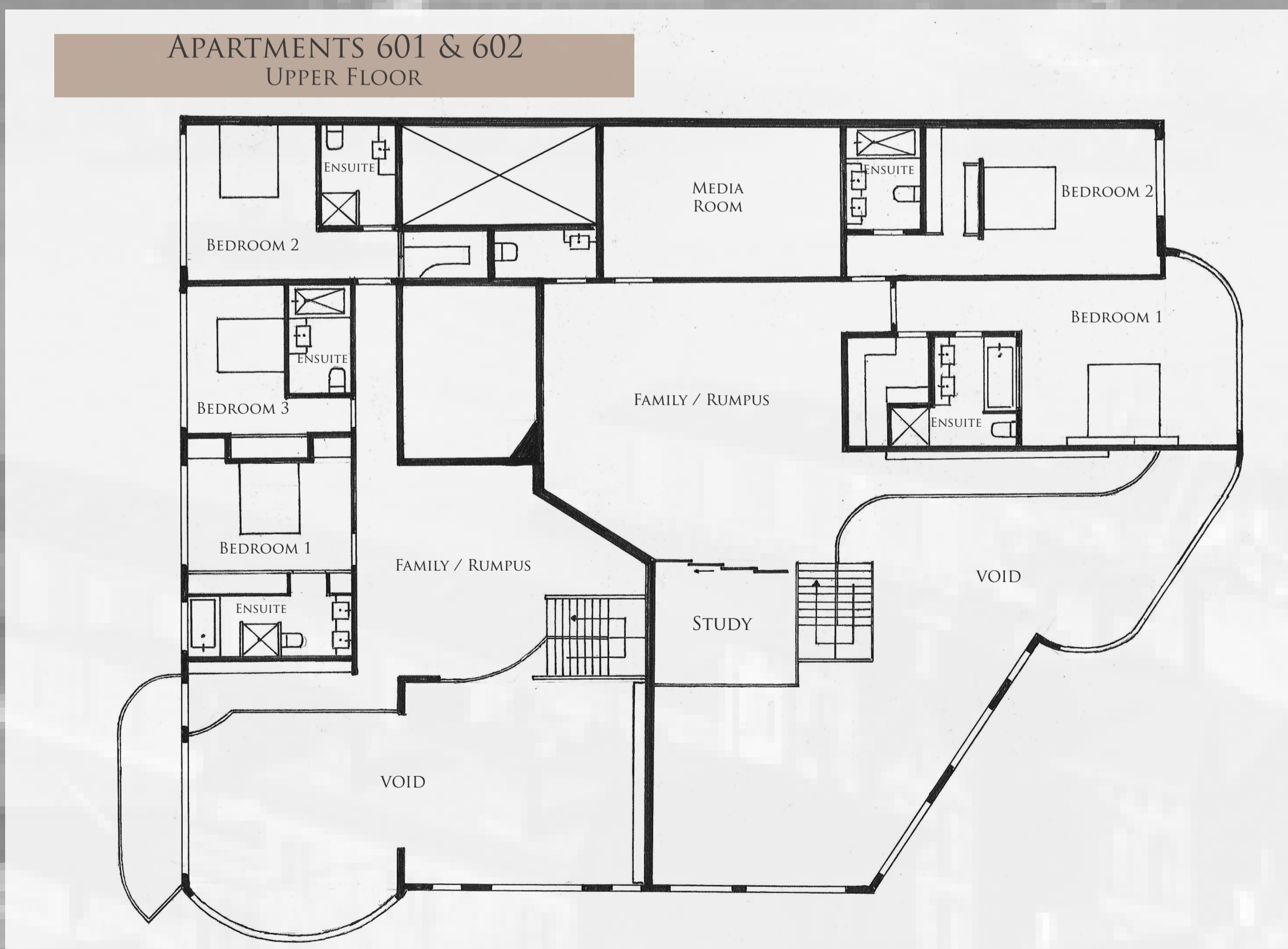


# THE ASTORIA



AXONOMETRIC OF CIRCULATION

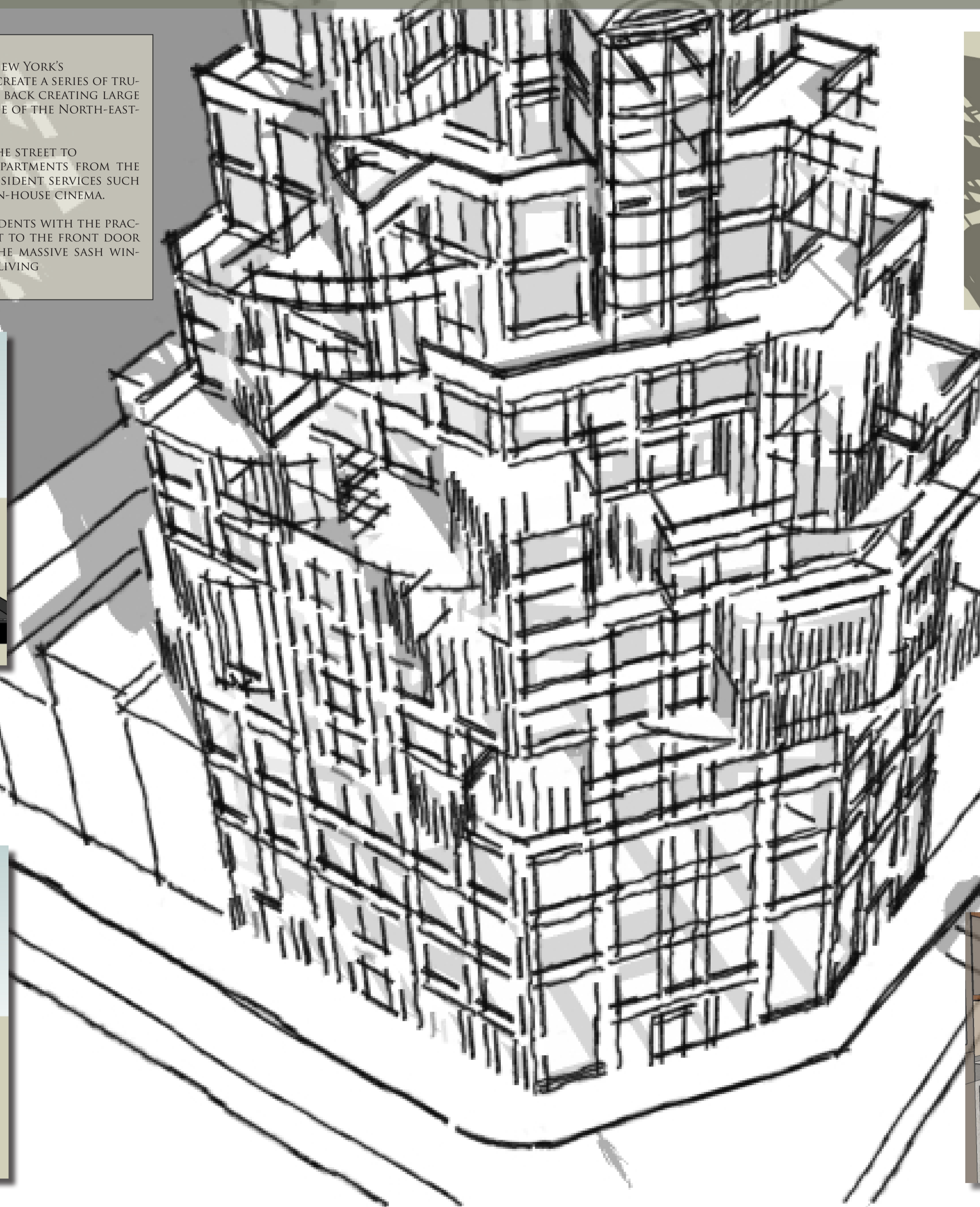
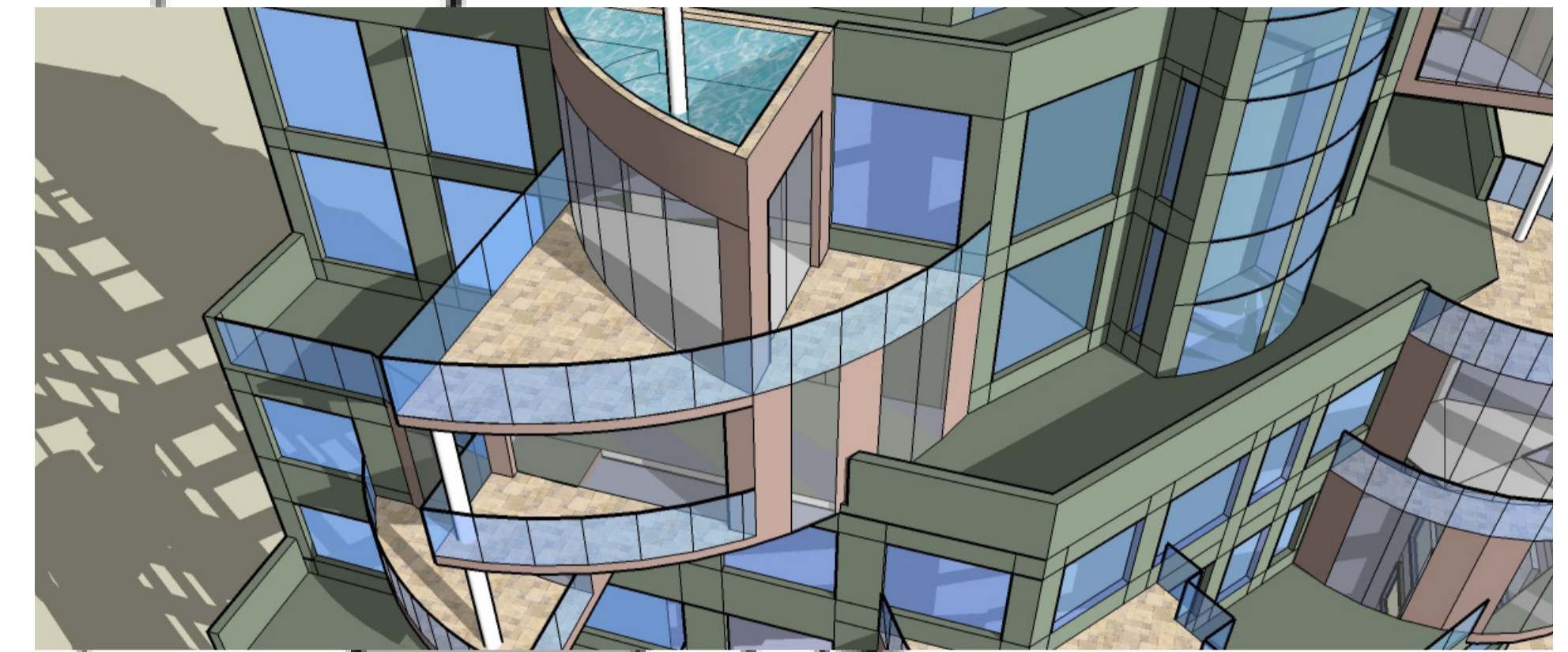


# THE ASTORIA

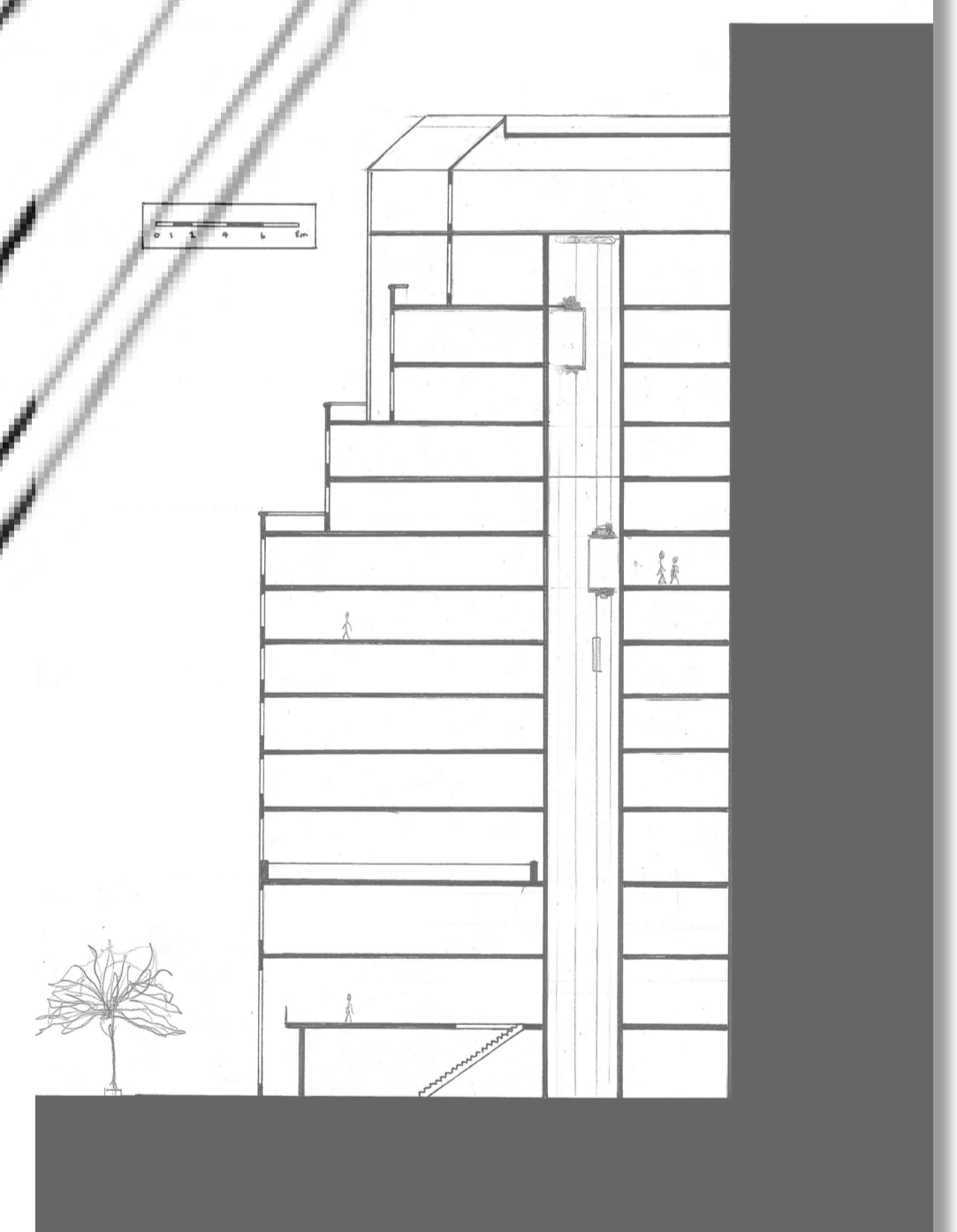
THE ASTORIA' MELTS THE OLD WORLD CLASS OF NEW YORK'S BYGONE ERA WITH MODERN PRACTICALITY AND ELEGANCE TO CREATE A SERIES OF TRULY UNIQUE HOMES IN THE SKY. AS THE ASTORIA RISES, IT STEPS BACK CREATING LARGE WRAP-AROUND PRIVATE BALCONIES THAT TAKE FULL ADVANTAGE OF THE NORTH-EAST-ERLY ASPECT.

THE RESIDENCES ARE PERCHED HIGH ABOVE THE STREET TO MINIMISE NOISE AND MAXIMISE PRIVACY. SEPARATING THE APARTMENTS FROM THE GROUND IS A RANGE OF SHOPS AND CAFE'S AND EXCLUSIVE RESIDENT SERVICES SUCH AS A RESTAURANT, GYMNASIUM, INDOOR POOL AND AN IN-HOUSE CINEMA.

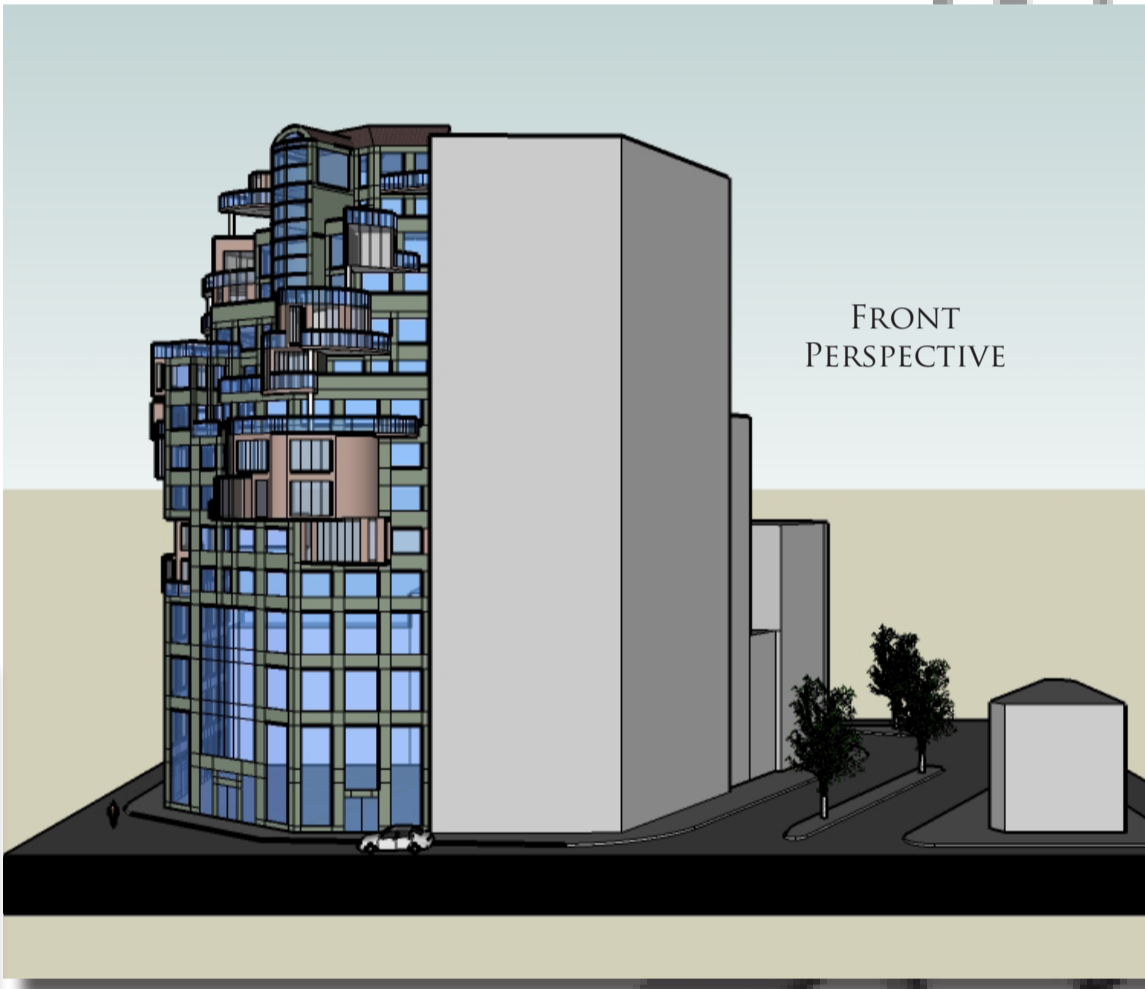
THE BUILDING FEATURES A CAR ELEVATOR, OFFERING RESIDENTS WITH THE PRACTICALITY OF A 'SKY GARAGE' WHERE YOU CAN DRIVE STRAIGHT TO THE FRONT DOOR AND BE GREETED WITH VAST AND EXPANSIVE VIEWS FROM THE MASSIVE SASH WINDOWS. THE ASTORIA - THE ULTIMATE LUXURY LIVING EXPERIENCE



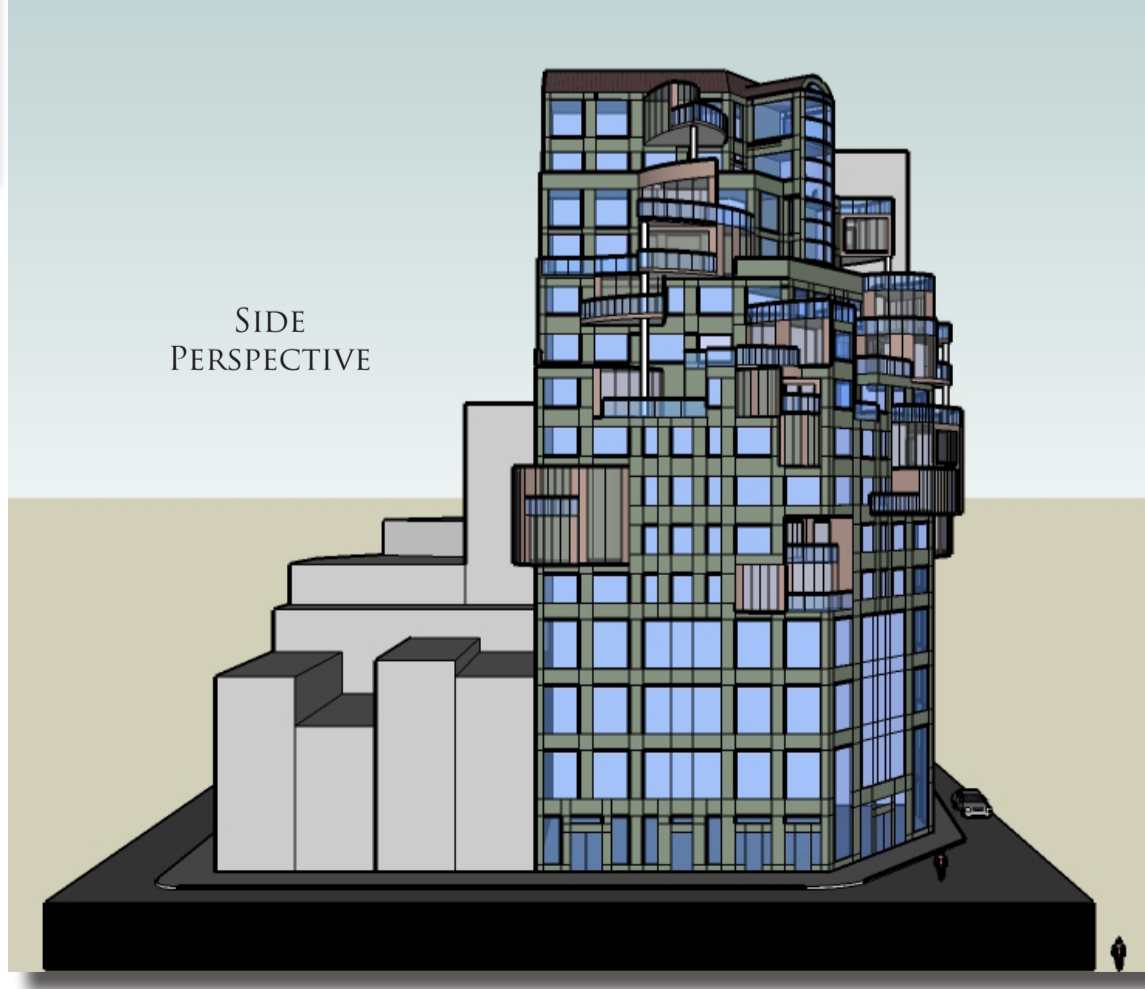
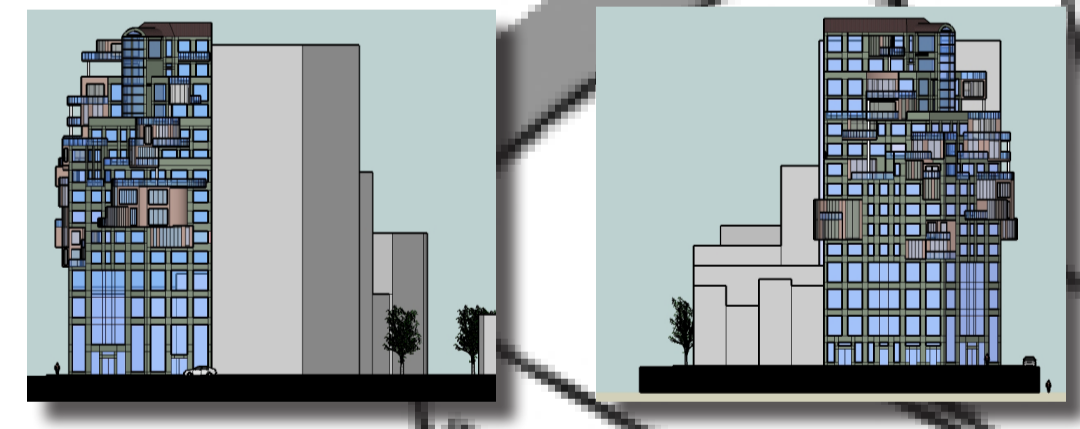
SECTION



ELEVATIONS



FRONT PERSPECTIVE



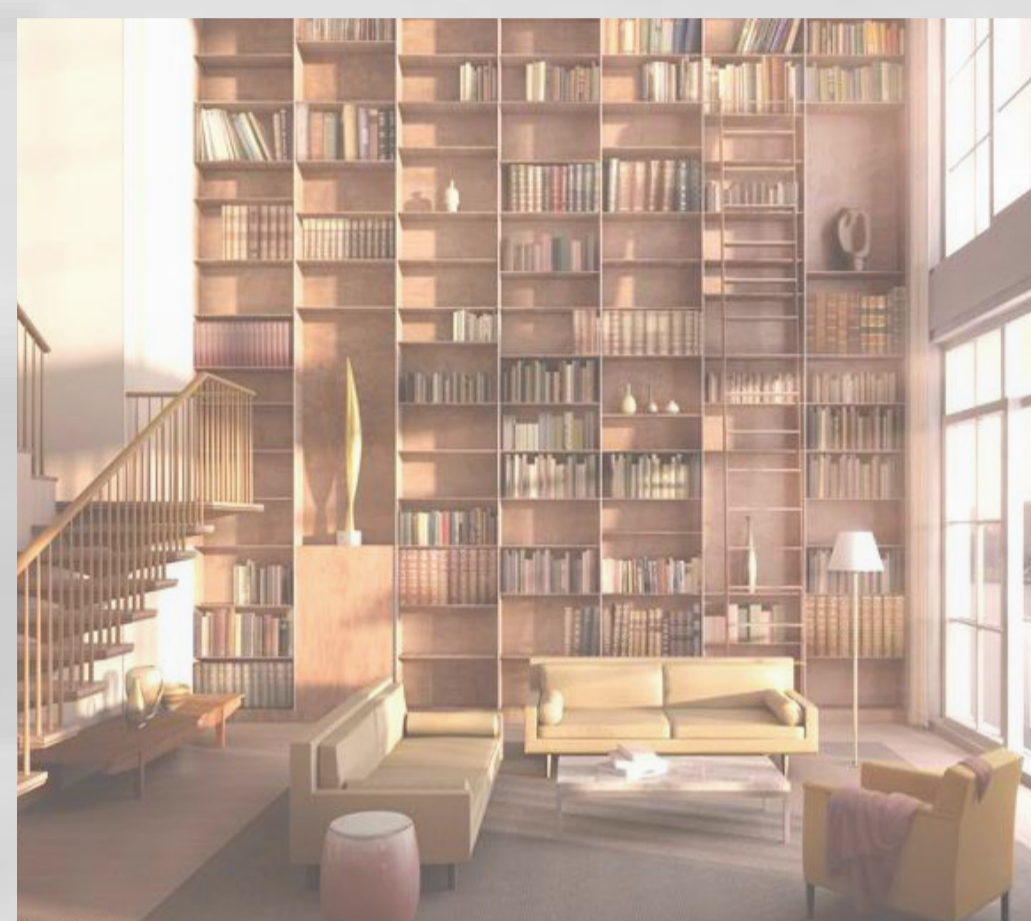
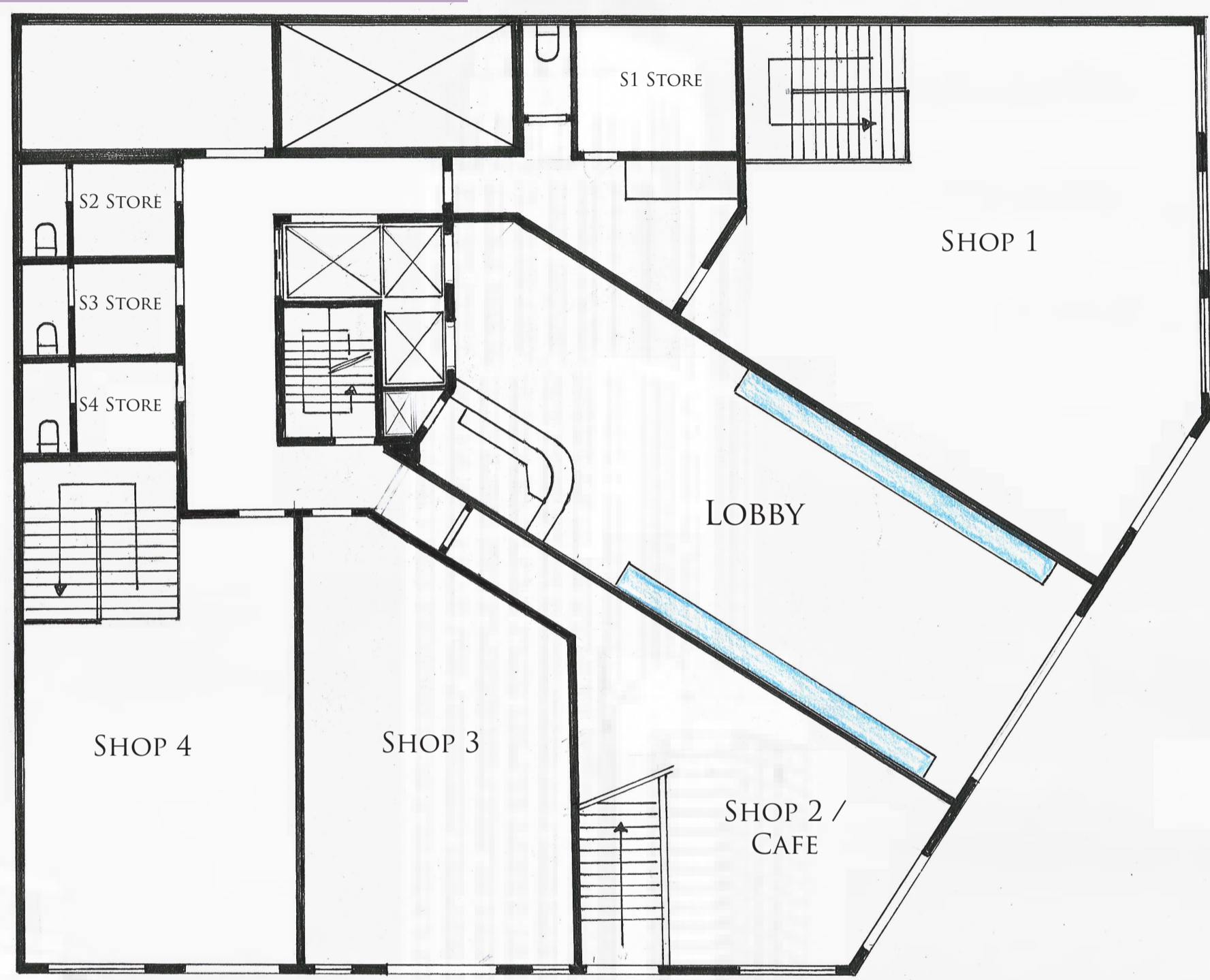
SIDE PERSPECTIVE



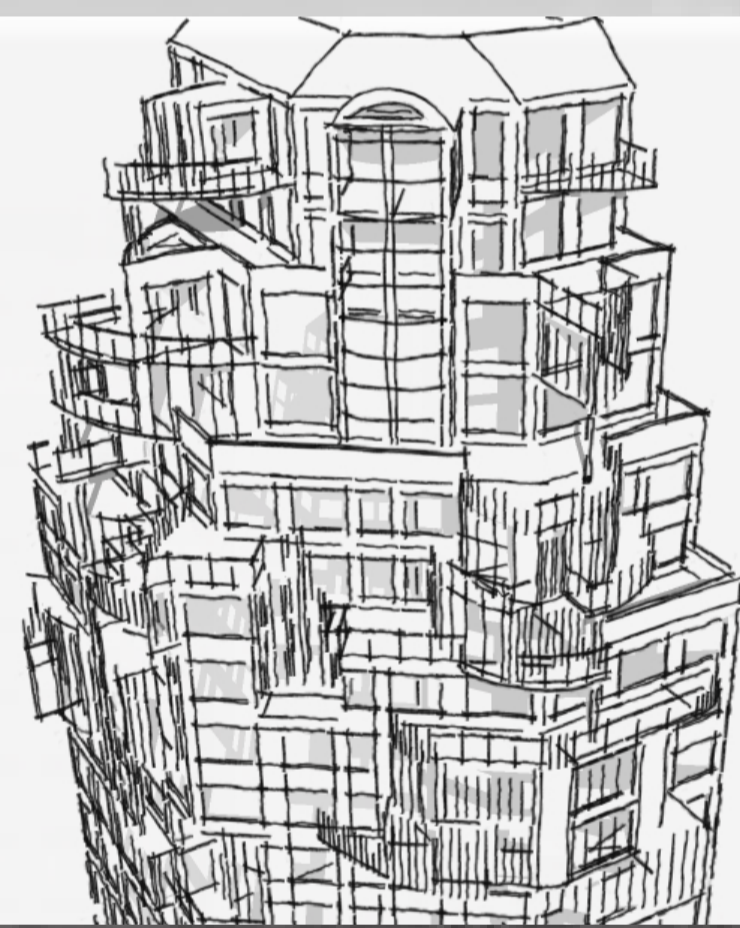
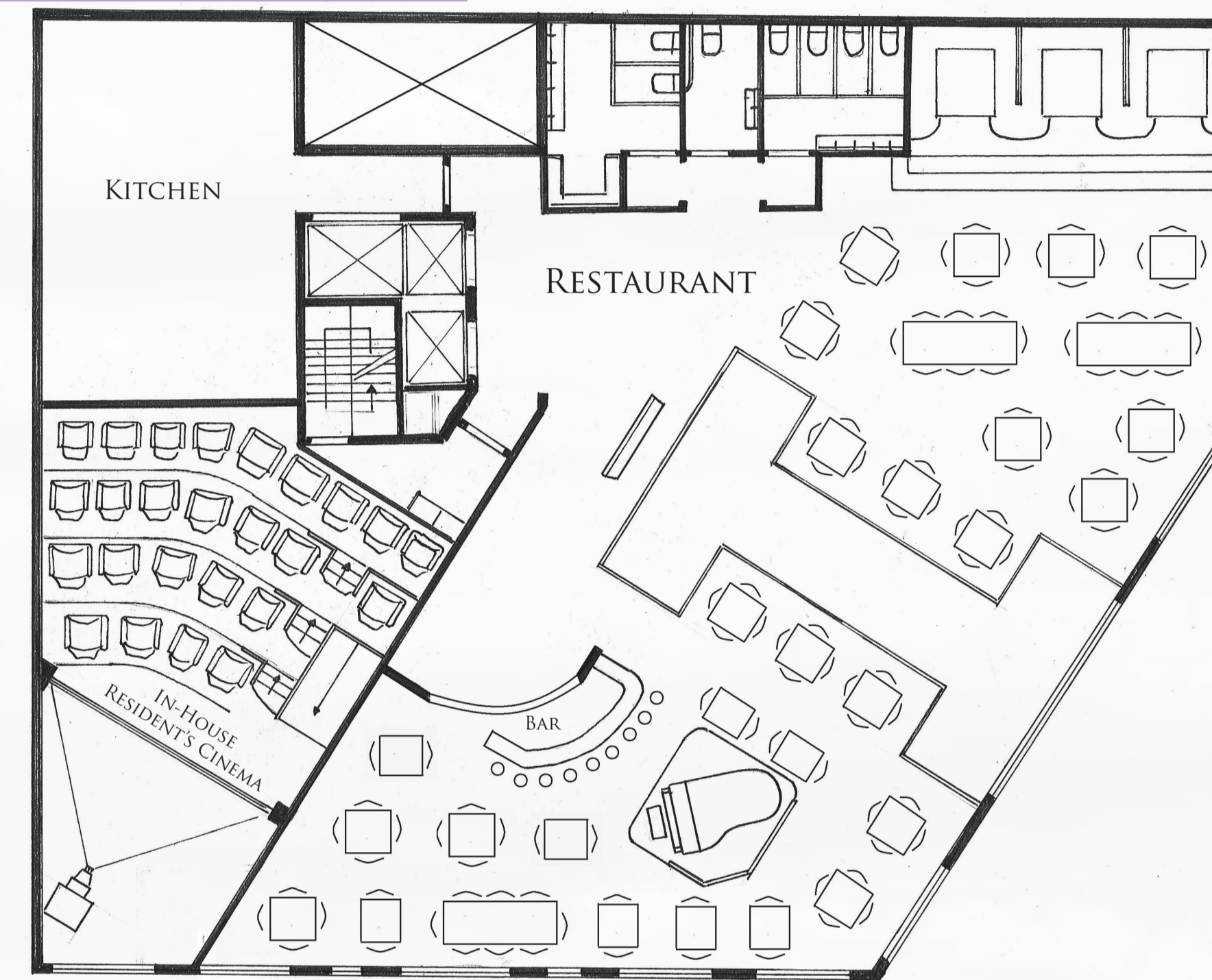


# T H E A S T O R I A

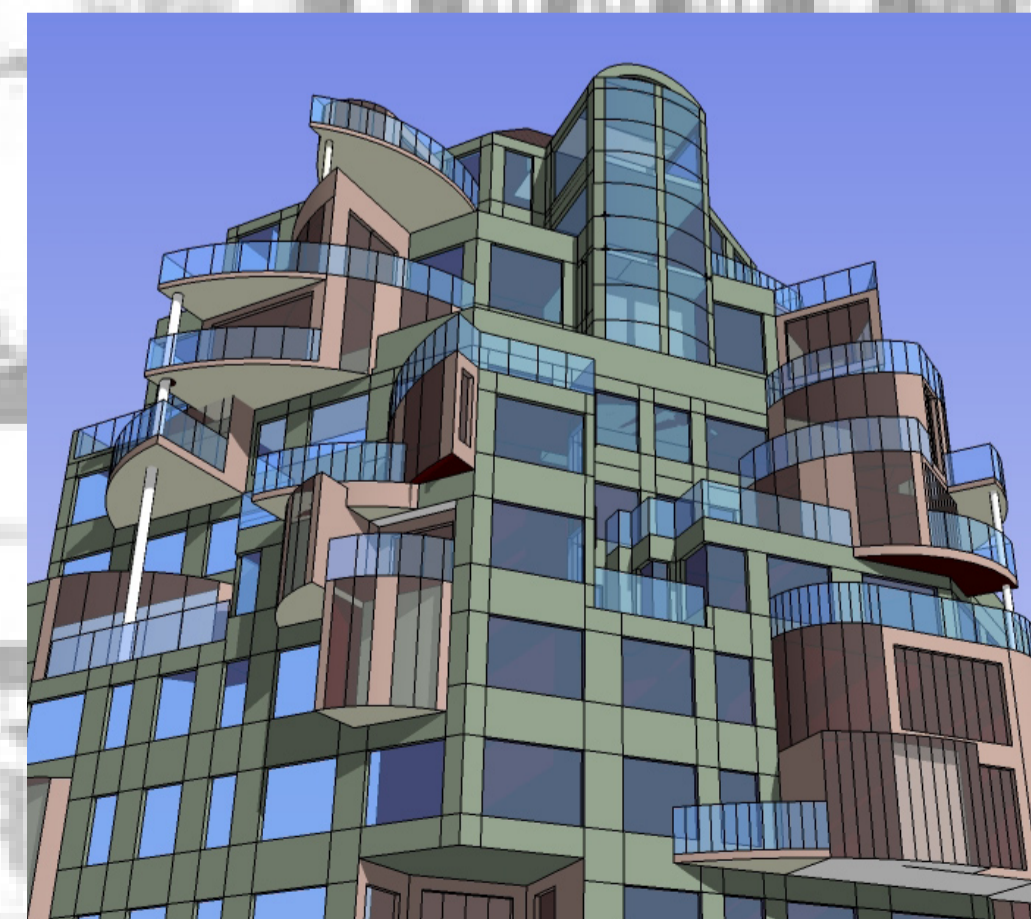
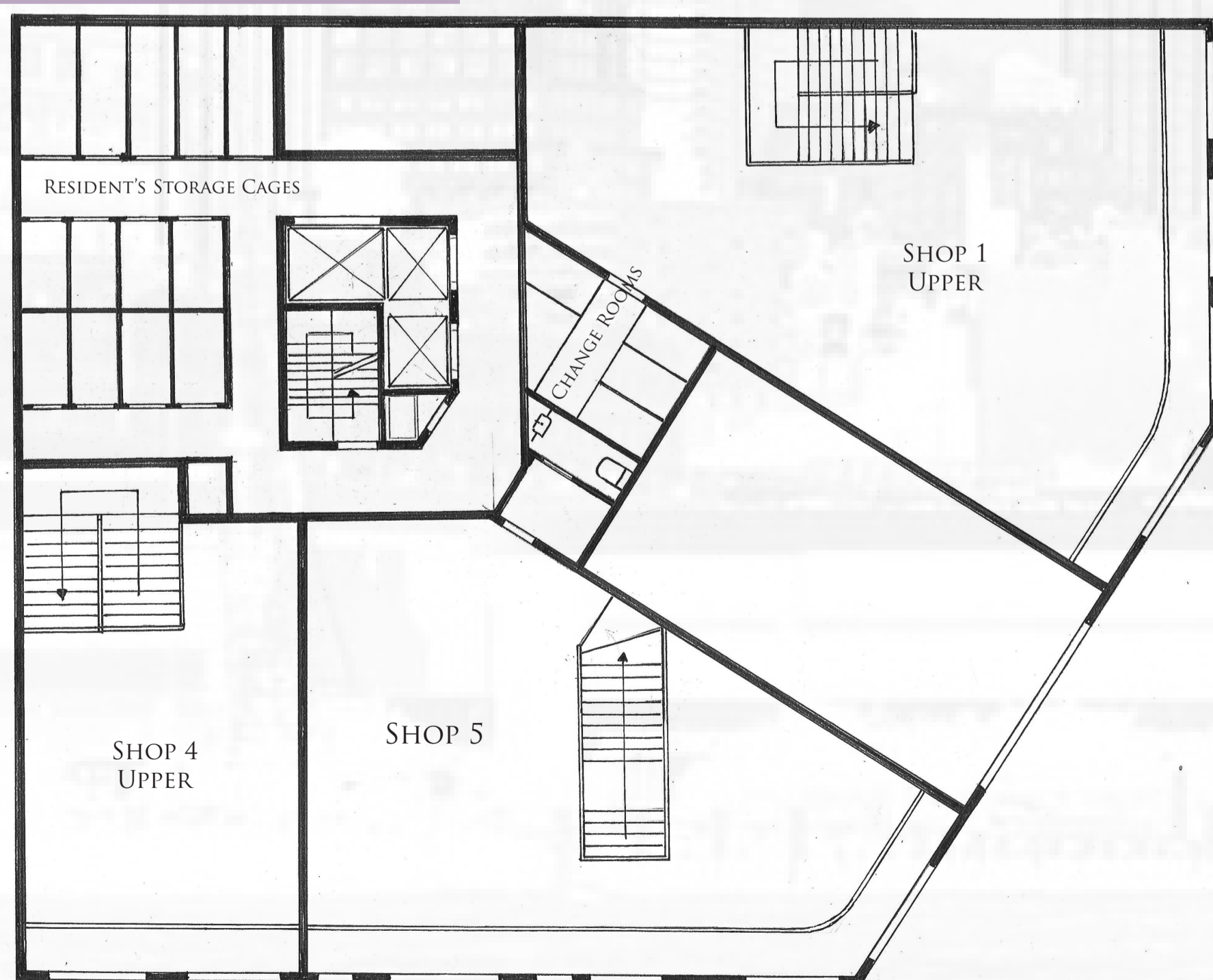
GROUND FLOOR



SECOND FLOOR



FIRST FLOOR



THIRD FLOOR

